

# HALLIBURTON

iCem<sup>®</sup> Service

**MALLARD EXPLORATION LLC-EBUS**

Ft. Lupton District, CO

**For: Todd Stephen/Hans Cary**

Date: Sunday, October 16, 2022

**EIDER 36-1-6HN**

WELD COUNTY

Job Date: Sunday, October 16, 2022

Sincerely,

**Mike Loughran**

2.0 Real-Time Job Summary

2.1 Job Event Log

Type	Seq No.	Activity	Graph Label	Date	Time	S c u r e	Pump B Pressur e	Cmb Pump Rate	Dvnhol e Density	Cmb Stg Total	Comments
						(psi)	(bbl/mi n)	(ppg)	(bbl)		
Event	1	Call Out	Call Out	10/15/2022	14:00:00	U S E R					CREW STAGED ON LOCATION. CALLED OUT AT 1400 HRS. 10/15/2022 REQUESTED ON LOCATION 2300 HRS. 10/15/2022
Event	2	Arrive At Loc	Arrive At Loc	10/15/2022	14:01:00	U S E R					CREW STAGED ON LOC FROM PREVIOUS WELL. MEET WITH CUSTOMER. 1670' J- 55 40# 9.625" CASING. TD 1670' F/C 1627.9', 13.5"HOLE, TVD 1658', 80' 15# CONDUCTOR, WATER 55 DEGREES, CHLORIDES LESS THAN 200 PPM, PH 7

# HALIBURTON

Customer: MALLARD EXPLORATION LLC-EBUS  
 Job: EIDER 36-1-6HN  
 Case: EIDER 36-1-6HN | SO#: 908178922

Event 3	Pre-Rig Up Safety Meeting	Pre-Rig Up Safety Meeting	10/15/2022	21:00:00	U S E R					HAZARD HUNT, JSA SAFE RIG UP
Event 4	Rig-Up Equipment	Rig-Up Equipment	10/15/2022	21:05:00	U S E R					RIG UP ALL HES EQUIPMENT AND IRON TO BUFFER ZONE
Event 5	Start Job	Start Job	10/16/2022	00:41:07	N C N E	-6.71	0.00	8.34	0.00	BEGIN RECORDING DATA-RIG CIRCULATES 5 BPM/100 PSI
Event 6	Test Lines	Test Lines	10/16/2022	00:44:27	N C N E	22.60	0.00	8.41	2.20	TEST HES LINES 2900 PSI
Event 7	Pump Spacer 1	Pump Spacer 1	10/16/2022	00:47:15	N C N E	0.97	0.00	8.40	0.00	20 BBLs WATER
Event 8	Pump Cement	Pump Cement	10/16/2022	00:52:02	N C N E	158.27	5.00	8.42	0.08	600 SACKS SWIFTCEM/187 BBLs. 13.5 PG, 1.75 YIELD, 9.23 GAL/SACK. 20- GAL D-AIR. 40 BBLs. CEMENT TO SURFACE. TOC=0'

# HALIBURTON

Customer: MALLARD EXPLORATION LLC-EBUS  
Job: EIDER 36-1-6HN  
Case: EIDER 36-1-6HN | SO#: 908178922

Event 9	Pre-Job Safety Meeting	Pre-Job Safety Meeting	10/16/2022	01:01:00	U S E R	526.11	8.07	13.52	67.88	DISCUSS HAZARDS OF HES EQUIPMENT AND PRESSURE
Event 10	Shutdown	Shutdown	10/16/2022	01:15:56	N C E	121.28	0.00	16.56	182.14	SHUTDOWN
Event 11	Drop Top Plug	Drop Top Plug	10/16/2022	01:17:12	N C E	-3.70	0.00	13.51	182.14	SCEPTRE TOP PLUG BY HANS
Event 12	Pump Displacement	Pump Displacement	10/16/2022	01:17:17	N C E	-3.57	0.00	13.48	0.00	123.4 BBLs. FRESH WATER DISPLACEMENT
Event 13	Bump Plug	Bump Plug	10/16/2022	01:38:16	N C E	983.43	0.00	8.94	121.58	FCP 550/4 BPM-BUMP 1050 PSI
Event 14	Check Floats	Check Floats	10/16/2022	01:39:18	U S E R	1016.98	0.00	8.94	121.58	FLOATS HOLD .5 BBLs. BACK
Event 15	End Job	End Job	10/16/2022	01:40:00	N C E	5.20	0.00	8.86	0.00	STOP RECORDING DATA

# HALLIBURTON

Customer: MALLARD EXPLORATION LLC-EBUS  
 Job: ELDER 36-1-6HN  
 Case: ELDER 36-1-6HN | SO#: 908178922

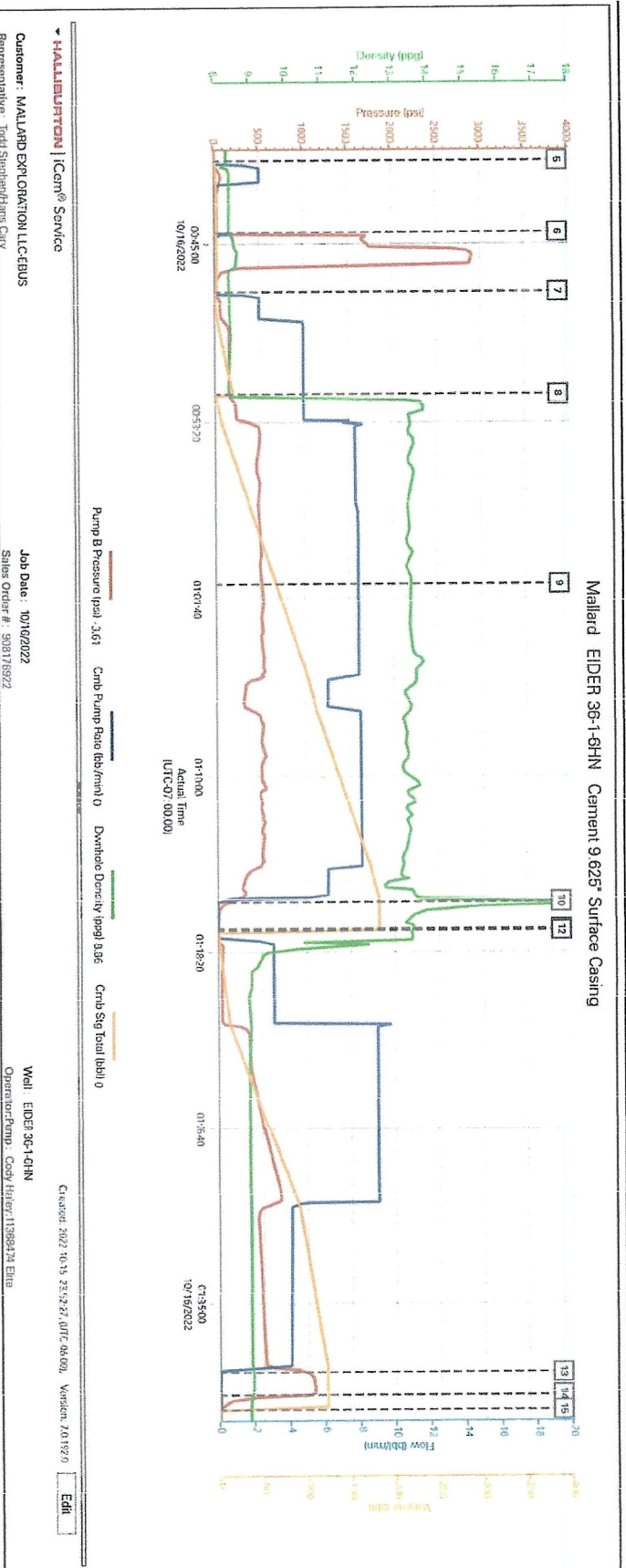
Event 16	Pre-Rig Down Safety Meeting	Pre-Rig Down Safety Meeting	10/16/2022	01:45:00	U S E R	JSA SAFE RIG-DOWN
Event 17	Rig-Down Equipment	Rig-Down Equipment	10/16/2022	01:50:00	U S E R	RIG DOWN HES EQUIPMENT
Event 18	Rig-Down Completed	Rig-Down Completed	10/16/2022	02:00:00	U S E R	RIG-DOWN COMPLETED
Event 19	Crew Leave Location	Crew Leave Location	10/16/2022	02:15:00	U S E R	CREW LEAVE LOCATION. CREW STAGED ON LOC FOR NEXT WELL

# HALIBURTON

Customer: MALLARD EXPLORATION LLC-EBUS  
Job: EIDER 36-1-6HN  
Case: EIDER 36-1-6HN | SO#: 908178922

## 3.0 Attachments

### 3.1 EIDER 36-1-6HN-JOB CHART.png





## Cementing Job Summary

The Road to Excellence Starts with Safety

Sold To #: 380921		Ship To #: 9141729		Quote #:		Sales Order #: 0908178922	
Customer: MALLARD EXPLORATION LLC-EBUS				Customer Rep: Todd Stephen/Hans Cary			
Well Name: EIDER			Well #: 36-1-6HN		API/UWI #:		
Field:		City (SAP): RAYMER		County/Parish: Weld		State: COLORADO	
Legal Description:							
Contractor:				Rig/Platform Name/Num: Cartel 11			
Job BOM: 7521 7521							
Well Type: HORIZONTAL OIL							
Sales Person: HALAMERICA\HB41307				Srvc Supervisor: Michael Loughran			
Job							

Formation Name	
Formation Depth (MD)	Top Bottom
Form Type	BHST
Job depth MD	1670ft Job Depth TVD
Water Depth	Wk Ht Above Floor
Perforation Depth (MD)	From To

### Well Data

Description	New / Used	Size in	ID in	Weight lbm/ft	Thread	Grade	Top MD ft	Bottom MD ft	Top TVD ft	Bottom TVD ft
Casing		16	15.376	55			0	80		
Casing		9.625	8.835	40		J-55	0	1670	0	1658
Open Hole Section			13.5				80	1670	0	1658

### Tools and Accessories

Type	Size in	Qty	Make	Depth ft	Type	Size in	Qty	Make
Guide Shoe	9.625				Top Plug	9.625	1	sceptre
Float Shoe	9.625			1670	Bottom Plug	9.625	0	
Float Collar	9.625			1627.9	SSR plug set	9.625		
Insert Float	9.625				Plug Container	9.625	1	HES
Stage Tool	9.625				Centralizers	9.625		

### Fluid Data

Stage/Plug #: 1

Fluid #	Stage Type	Fluid Name	Qty	Qty UoM	Mixing Density lbm/gal	Yield ft3/sack	Mix Fluid Gal	Rate bbl/min	Total Mix Fluid Gal
1	Fresh Water	Fresh Water	20	bbl	8.33			4	

Fluid #	Stage Type	Fluid Name	Qty	Qty UoM	Mixing Density lbm/gal	Yield ft3/sack	Mix Fluid Gal	Rate bbl/min	Total Mix Fluid Gal
2	SwiftCem	SBM SWIFTCM CEMENT SYSTEM CEM	600	sack	13.5	1.75		8	9.23
0.1250 lbm		POLY-E-FLAKE (101216940)							
9.23 Gal		FRESH WATER							

## Cementing Job Summary

Fluid #	Stage Type	Fluid Name	Qty	Qty UoM	Mixing Density lbm/gal	Yield ft3/sack	Mix Fluid Gal	Rate bbl/min	Total Mix Fluid Gal
3	Displacement Fluid	Displacement Fluid	123.4	bbl	8.33			8	
Cement Left In Pipe		Amount	42.1 ft		Reason			Shoe Joint	
Mix Water:		pH 7	Mix Water Chloride:		Less 200 ppm		Mix Water Temperature:		55 °F
Cement Temperature:			Piug Displaced by:		8.33 lb/gal		Disp. Temperature:		55 °F
Plug Bumped?		Yes	Bump Pressure:		1050 psi		Floats Held?		Yes
Cement Returns:		40 bbl	Returns Density:		13.5 lb/gal		Returns Temperature:		
Comment									