

AMOCO STATE 42-16

(API #001-08669) Loc. #320230

FIELD NAME WATTENBERG - #90750

Spud Date 1/28/1985

Basin DENVER - JULESBURG

Location SENE 16 1S65W 6

Elevation 5202' GL

TD 8137'

PBTD 8124'

Formation Tops

DENVER - 96'

UPPER ARAPAHOE - 261'

LOWER ARAPAHOE - 534'

FOX HILLS TOP - 1199'

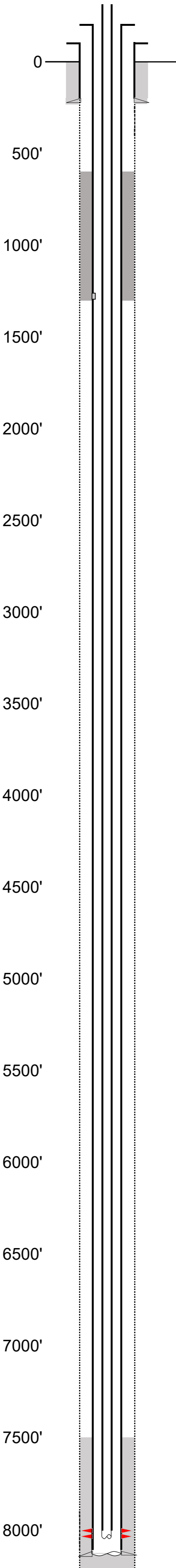
FOX HILLS BASE - 1434'

Base of Upper Pierre - 2580'

NIOBRARA - 7182'

CODELL - 7542'  
FORT HAYS - 7566'  
GREENHORN - 7658'  
BENTONITE - 7857'  
D SAND - 7956'  
J SAND - 8000'  
SKULL CREEK - 8092'

EXISTING



Existing Casing and Cement Coverage

SURF: Size: 8.625", Hole Size: 12.25 in.  
Depth: 221 ft., Weight: 24  
Cement: 150 sx, Top: 0 ft., Method: Vis

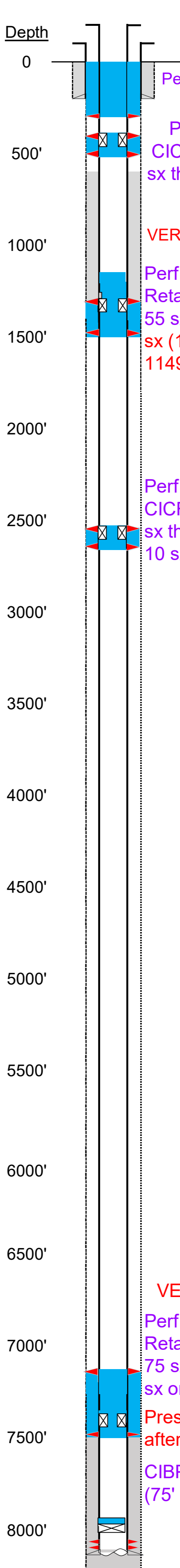
FOX HILLS TOP - 1199'  
Deepest DWR w/in 1 mi.= 1280'  
DV Tool @ 1282', 300 sx  
FOX HILLS BASE - 1434'

1ST, Size: 4.5", Hole Size: 7.875"  
Depth: 8137', Weight: 11.6  
Cement: 150 sx, TOC: 7479', Method: Calc

TOC=7479' (CALC.)

2-3/8" tubing set at 7977'  
J Sand Perfs 8014'-8056'  
PBTD=8124'  
TD=8137'

PROPOSED



Plug Placement

Perf at 271' and circulate  
157 sx to surface.

Perf at 402' & 502'  
CICR @412', pump 40  
sx through perfs. Leave  
10 sx on top.

VERIFY Bottom of Cement  
w/ CBL  
Perf at 1485' & 1295'.  
Retainer at 1305'. Pump  
55 sx through. Leave 12  
sx (154') on top (tag at  
1149').

Perf at 2630' & 2530'  
CICR @2540, pump 40  
sx through perfs. Leave  
10 sx on top.

CBL Required  
VERIFY TOC w/ CBL  
Perf at 7467' & 7132'.  
Retainer at 7417'. Pump  
75 sx through. Leave 25  
sx on top.  
Pressure test casing  
after setting CIBP.  
CIBP w/ 2 sx @ 7939'  
(75' above top perf).