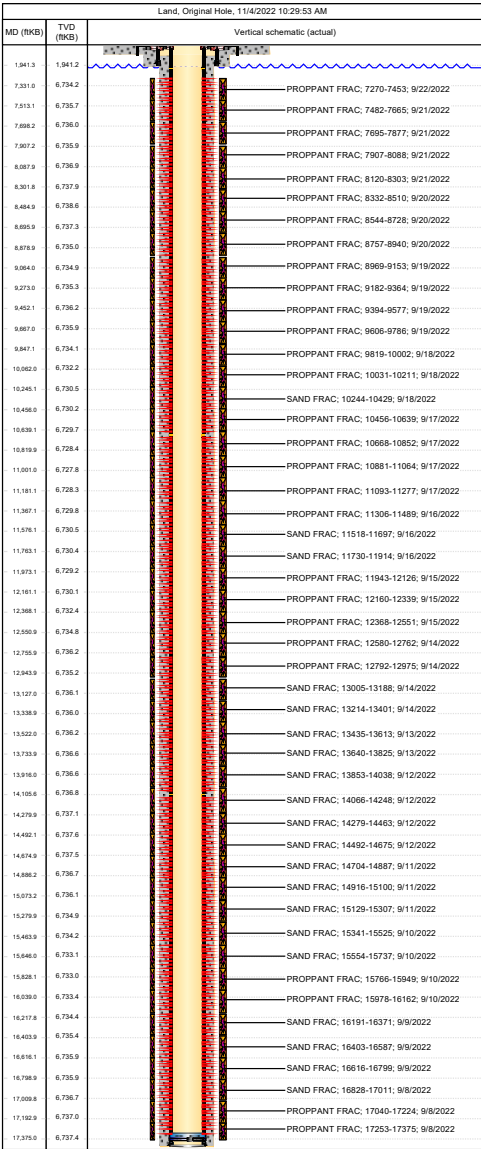




Land, Original Hole, 11/4/2022 10:29:53 AM		
MD (ftKB)	TVD (ftKB)	Vertical schematic (actual)
1,941.3	1,941.2	
7,231.0	6,734.2	
7,531.1	6,735.7	PROPPANT FRAC, 7270-7453, 9/22/2022
7,688.2	6,736.0	PROPPANT FRAC, 7482-7665, 9/21/2022
7,807.2	6,735.9	PROPPANT FRAC, 7695-7877, 9/21/2022
8,087.9	6,736.9	PROPPANT FRAC, 7907-8088, 9/21/2022
8,301.8	6,737.9	PROPPANT FRAC, 8120-8303, 9/21/2022
8,484.9	6,738.6	PROPPANT FRAC, 8332-8510, 9/20/2022
8,695.9	6,737.3	PROPPANT FRAC, 8544-8728, 9/20/2022
8,876.9	6,735.0	PROPPANT FRAC, 8757-8940, 9/20/2022
9,084.0	6,734.9	PROPPANT FRAC, 8969-9153, 9/19/2022
9,273.0	6,735.3	PROPPANT FRAC, 9182-9364, 9/19/2022
9,452.1	6,736.2	PROPPANT FRAC, 9394-9577, 9/19/2022
9,607.0	6,735.9	PROPPANT FRAC, 9606-9786, 9/19/2022
9,847.1	6,734.1	PROPPANT FRAC, 9819-10002, 9/18/2022
10,082.0	6,732.2	PROPPANT FRAC, 10031-10211, 9/18/2022
10,245.1	6,730.5	SAND FRAC, 10244-10429, 9/18/2022
10,486.0	6,730.2	PROPPANT FRAC, 10456-10639, 9/17/2022
10,636.1	6,729.7	PROPPANT FRAC, 10668-10852, 9/17/2022
10,819.9	6,728.4	PROPPANT FRAC, 10881-11064, 9/17/2022
11,001.0	6,727.8	PROPPANT FRAC, 11093-11277, 9/17/2022
11,181.1	6,728.3	PROPPANT FRAC, 11306-11489, 9/16/2022
11,367.1	6,729.8	SAND FRAC, 11518-11697, 9/16/2022
11,576.1	6,730.5	SAND FRAC, 11730-11914, 9/16/2022
11,763.1	6,730.4	PROPPANT FRAC, 11943-12126, 9/15/2022
11,973.1	6,729.2	PROPPANT FRAC, 12160-12339, 9/15/2022
12,161.1	6,730.1	PROPPANT FRAC, 12368-12551, 9/15/2022
12,368.1	6,732.4	PROPPANT FRAC, 12580-12762, 9/14/2022
12,550.9	6,734.8	PROPPANT FRAC, 12792-12975, 9/14/2022
12,755.9	6,736.2	SAND FRAC, 13005-13188, 9/14/2022
12,945.9	6,735.2	SAND FRAC, 13214-13401, 9/14/2022
13,127.0	6,736.1	SAND FRAC, 13435-13613, 9/13/2022
13,338.9	6,736.0	SAND FRAC, 13640-13825, 9/13/2022
13,523.0	6,736.2	SAND FRAC, 13853-14038, 9/12/2022
13,733.9	6,736.6	SAND FRAC, 14066-14248, 9/12/2022
13,916.0	6,736.6	SAND FRAC, 14279-14463, 9/12/2022
14,105.6	6,736.8	SAND FRAC, 14492-14675, 9/12/2022
14,279.9	6,737.1	SAND FRAC, 14704-14887, 9/11/2022
14,492.1	6,737.6	SAND FRAC, 14916-15100, 9/11/2022
14,674.9	6,737.5	SAND FRAC, 15129-15307, 9/11/2022
14,886.2	6,736.7	SAND FRAC, 15341-15525, 9/10/2022
15,073.2	6,736.1	SAND FRAC, 15554-15737, 9/10/2022
15,279.9	6,734.9	PROPPANT FRAC, 15766-15949, 9/10/2022
15,463.9	6,734.2	PROPPANT FRAC, 15978-16162, 9/10/2022
15,646.0	6,733.1	SAND FRAC, 16191-16371, 9/9/2022
15,826.1	6,733.0	SAND FRAC, 16403-16587, 9/9/2022
16,030.0	6,733.4	SAND FRAC, 16616-16799, 9/9/2022
16,217.8	6,734.4	SAND FRAC, 16828-17011, 9/8/2022
16,403.9	6,735.4	PROPPANT FRAC, 17040-17224, 9/8/2022
16,616.1	6,735.9	PROPPANT FRAC, 17253-17375, 9/8/2022
16,795.9	6,735.9	
17,009.8	6,736.7	
17,192.0	6,737.0	
17,375.0	6,737.4	

Perforation Data					
Linked Zone	Explosive Type	Sum of Entered Shot Total			Date
			Top (ftKB)	Btm (ftKB)	
NIOBRARA, Original Hole		0	7,270.0	7,271.0	9/21/2022
			7,300.0	7,301.0	9/21/2022
NIOBRARA, Original Hole		4	7,331.0	7,332.0	9/21/2022
			7,361.0	7,362.0	9/21/2022
NIOBRARA, Original Hole		4	7,392.0	7,393.0	9/21/2022
			7,422.0	7,423.0	9/21/2022
NIOBRARA, Original Hole		4	7,452.0	7,453.0	9/21/2022
			7,482.0	7,483.0	9/21/2022
NIOBRARA, Original Hole		4	7,512.0	7,513.0	9/21/2022
			7,543.0	7,544.0	9/21/2022
NIOBRARA, Original Hole		4	7,574.0	7,575.0	9/21/2022
			7,604.0	7,605.0	9/21/2022
NIOBRARA, Original Hole		4	7,634.0	7,635.0	9/21/2022
			7,665.0	7,666.0	9/21/2022
NIOBRARA, Original Hole		4	7,697.0	7,698.0	9/21/2022
			7,725.0	7,726.0	9/21/2022
NIOBRARA, Original Hole		4	7,756.0	7,757.0	9/21/2022
			7,788.0	7,789.0	9/21/2022
NIOBRARA, Original Hole		4	7,816.0	7,817.0	9/21/2022
			7,847.0	7,848.0	9/21/2022
NIOBRARA, Original Hole		4	7,877.0	7,878.0	9/21/2022
			7,907.0	7,908.0	9/21/2022
NIOBRARA, Original Hole		4	7,938.0	7,939.0	9/21/2022
			7,968.0	7,969.0	9/21/2022
NIOBRARA, Original Hole		4	7,998.0	7,999.0	9/21/2022
			8,029.0	8,030.0	9/21/2022
NIOBRARA, Original Hole		4	8,059.0	8,060.0	9/21/2022
			8,087.0	8,088.0	9/21/2022
NIOBRARA, Original Hole		4	8,120.0	8,121.0	9/21/2022
			8,150.0	8,151.0	9/21/2022
NIOBRARA, Original Hole		4	8,182.0	8,183.0	9/21/2022
			8,211.0	8,212.0	9/21/2022
NIOBRARA, Original Hole		4	8,241.0	8,242.0	9/21/2022
			8,273.0	8,274.0	9/21/2022
NIOBRARA, Original Hole		4	8,302.0	8,303.0	9/21/2022
			8,332.0	8,333.0	9/21/2022
NIOBRARA, Original Hole		4	8,362.0	8,363.0	9/21/2022
			8,393.0	8,394.0	9/21/2022
NIOBRARA, Original Hole		4	8,423.0	8,424.0	9/21/2022
			8,454.0	8,455.0	9/21/2022
NIOBRARA, Original Hole		4	8,484.0	8,485.0	9/21/2022
			8,509.0	8,510.0	9/21/2022
NIOBRARA, Original Hole		4	8,544.0	8,545.0	9/21/2022
			8,578.0	8,579.0	9/21/2022
NIOBRARA, Original Hole		4	8,605.0	8,606.0	9/21/2022
			8,636.0	8,637.0	9/21/2022
NIOBRARA, Original Hole		4	8,667.0	8,668.0	9/21/2022
			8,696.0	8,697.0	9/21/2022
NIOBRARA, Original Hole		4	8,727.0	8,728.0	9/21/2022
			8,757.0	8,758.0	9/21/2022
NIOBRARA, Original Hole		4	8,787.0	8,788.0	9/21/2022
			8,818.0	8,819.0	9/21/2022
NIOBRARA, Original Hole		4	8,848.0	8,849.0	9/21/2022
			8,878.0	8,879.0	9/21/2022



Perforation Data						
Linked Zone	Explo sive Type	Sum of Enter e d Shot Total	Top (ftKB)	Btm (ftKB)	Date	
NIOBRARA, Original Hole		4	8,939.0	8,940.0	9/20/2022	
NIOBRARA, Original Hole		4	8,966.0	8,967.0	9/19/2022	
NIOBRARA, Original Hole		4	9,000.0	9,001.0	9/19/2022	
NIOBRARA, Original Hole		4	9,030.0	9,031.0	9/19/2022	
NIOBRARA, Original Hole		4	9,063.0	9,064.0	9/19/2022	
NIOBRARA, Original Hole		4	9,091.0	9,092.0	9/19/2022	
NIOBRARA, Original Hole		4	9,121.0	9,122.0	9/19/2022	
NIOBRARA, Original Hole		4	9,152.0	9,153.0	9/19/2022	
NIOBRARA, Original Hole		4	9,182.0	9,183.0	9/19/2022	
NIOBRARA, Original Hole		4	9,212.0	9,213.0	9/19/2022	
NIOBRARA, Original Hole		4	9,242.0	9,243.0	9/19/2022	
NIOBRARA, Original Hole		4	9,273.0	9,274.0	9/19/2022	
NIOBRARA, Original Hole		4	9,303.0	9,304.0	9/19/2022	
NIOBRARA, Original Hole		4	9,334.0	9,335.0	9/19/2022	
NIOBRARA, Original Hole		4	9,363.0	9,364.0	9/19/2022	
NIOBRARA, Original Hole		4	9,394.0	9,395.0	9/19/2022	
NIOBRARA, Original Hole		4	9,424.0	9,425.0	9/19/2022	
NIOBRARA, Original Hole		4	9,451.0	9,452.0	9/19/2022	
NIOBRARA, Original Hole		4	9,485.0	9,486.0	9/19/2022	
NIOBRARA, Original Hole		4	9,516.0	9,517.0	9/19/2022	
NIOBRARA, Original Hole		4	9,547.0	9,548.0	9/19/2022	
NIOBRARA, Original Hole		4	9,576.0	9,577.0	9/19/2022	
NIOBRARA, Original Hole		4	9,606.0	9,607.0	9/18/2022	
NIOBRARA, Original Hole		4	9,637.0	9,638.0	9/18/2022	
NIOBRARA, Original Hole		4	9,667.0	9,668.0	9/18/2022	
NIOBRARA, Original Hole		4	9,698.0	9,699.0	9/18/2022	
NIOBRARA, Original Hole		4	9,728.0	9,729.0	9/18/2022	
NIOBRARA, Original Hole		4	9,758.0	9,759.0	9/18/2022	
NIOBRARA, Original Hole		4	9,785.0	9,786.0	9/18/2022	
NIOBRARA, Original Hole		4	9,819.0	9,820.0	9/18/2022	
NIOBRARA, Original Hole		4	9,846.0	9,847.0	9/18/2022	
NIOBRARA, Original Hole		4	9,880.0	9,881.0	9/18/2022	
NIOBRARA, Original Hole		4	9,910.0	9,911.0	9/18/2022	
NIOBRARA, Original Hole		4	9,945.0	9,946.0	9/18/2022	
NIOBRARA, Original Hole		4	9,971.0	9,972.0	9/18/2022	
NIOBRARA, Original Hole		4	10 001.0	10 002.0	9/18/2022	
NIOBRARA, Original Hole		4	10 031.0	10 032.0	9/18/2022	
NIOBRARA, Original Hole		4	10 062.0	10 063.0	9/18/2022	
NIOBRARA, Original Hole		4	10 092.0	10 093.0	9/18/2022	
NIOBRARA, Original Hole		4	10 122.0	10 123.0	9/18/2022	
NIOBRARA, Original Hole		4	10 153.0	10 154.0	9/18/2022	
NIOBRARA, Original Hole		4	10 183.0	10 184.0	9/18/2022	
NIOBRARA, Original Hole		4	10 210.0	10 211.0	9/18/2022	
NIOBRARA, Original Hole		4	10 244.0	10 245.0	9/18/2022	
NIOBRARA, Original Hole		4	10 274.0	10 275.0	9/18/2022	
NIOBRARA, Original Hole		4	10 304.0	10 305.0	9/18/2022	
NIOBRARA, Original Hole		4	10 332.0	10 333.0	9/18/2022	
NIOBRARA, Original Hole		4	10 365.0	10 366.0	9/18/2022	
NIOBRARA, Original Hole		4	10 396.0	10 397.0	9/18/2022	
NIOBRARA, Original Hole		4	10 428.0	10 429.0	9/18/2022	
NIOBRARA, Original Hole		4	10 456.0	10 457.0	9/17/2022	
NIOBRARA, Original Hole		4	10 486.0	10 487.0	9/17/2022	
NIOBRARA, Original Hole		4	10 517.0	10 518.0	9/17/2022	
NIOBRARA, Original Hole		4	10 547.0	10 548.0	9/17/2022	
NIOBRARA, Original Hole		4	10 578.0	10 579.0	9/17/2022	

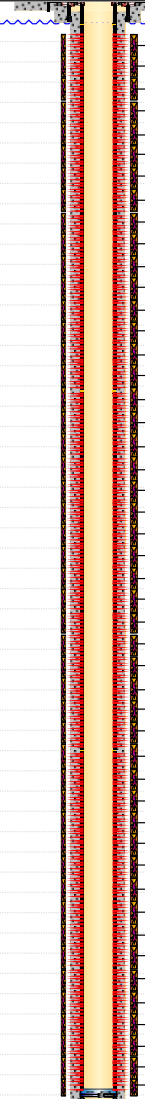
Land, Original Hole, 11/4/2022 10:29:53 AM			Perforation Data					
MD (ftKB)	TVD (ftKB)	Vertical schematic (actual)	Linked Zone	Explosive Type	Sum of Entered Shot Total			
						Top (ftKB)	Btm (ftKB)	Date
1,941.3	1,941.2		NIOBRARA, Original Hole		4	10 638.0	10 639.0	9/17/2022
7,231.0	6,754.2					10 668.0	10 669.0	9/17/2022
7,531.1	6,735.7	PROPPANT FRAC, 7422-7665, 9/21/2022	NIOBRARA, Original Hole		4	10 702.0	10 703.0	9/17/2022
7,682.2	6,736.0	PROPPANT FRAC, 7695-7877, 9/21/2022	NIOBRARA, Original Hole		4	10 729.0	10 730.0	9/17/2022
7,807.2	6,735.9	PROPPANT FRAC, 7907-8088, 9/21/2022	NIOBRARA, Original Hole		4	10 760.0	10 761.0	9/17/2022
8,087.9	6,736.9	PROPPANT FRAC, 8120-8303, 9/21/2022	NIOBRARA, Original Hole		4	10 790.0	10 791.0	9/17/2022
8,301.8	6,737.9	PROPPANT FRAC, 8332-8510, 9/20/2022	NIOBRARA, Original Hole		4	10 820.0	10 821.0	9/17/2022
8,484.9	6,738.6	PROPPANT FRAC, 8544-8728, 9/20/2022	NIOBRARA, Original Hole		4	10 851.0	10 852.0	9/17/2022
8,695.9	6,737.3	PROPPANT FRAC, 8757-8940, 9/20/2022	NIOBRARA, Original Hole		4	10 881.0	10 882.0	9/17/2022
8,876.9	6,735.0	PROPPANT FRAC, 8969-9153, 9/19/2022	NIOBRARA, Original Hole		4	10 911.0	10 912.0	9/17/2022
9,084.0	6,734.9	PROPPANT FRAC, 9182-9364, 9/19/2022	NIOBRARA, Original Hole		4	10 942.0	10 943.0	9/17/2022
9,273.0	6,735.3	PROPPANT FRAC, 9394-9577, 9/19/2022	NIOBRARA, Original Hole		4	10 972.0	10 973.0	9/17/2022
9,452.1	6,736.2	PROPPANT FRAC, 9606-9786, 9/19/2022	NIOBRARA, Original Hole		4	11 000.0	11 001.0	9/17/2022
9,607.0	6,735.9	PROPPANT FRAC, 9819-10002, 9/18/2022	NIOBRARA, Original Hole		4	11 033.0	11 034.0	9/17/2022
9,847.1	6,734.1	PROPPANT FRAC, 10031-10211, 9/18/2022	NIOBRARA, Original Hole		4	11 063.0	11 064.0	9/17/2022
10,082.0	6,732.2	SAND FRAC, 10244-10429, 9/18/2022	NIOBRARA, Original Hole		4	11 095.0	11 096.0	9/16/2022
10,245.1	6,730.5	PROPPANT FRAC, 10456-10639, 9/17/2022	NIOBRARA, Original Hole		4	11 124.0	11 125.0	9/16/2022
10,486.0	6,730.2	PROPPANT FRAC, 10668-10852, 9/17/2022	NIOBRARA, Original Hole		4	11 154.0	11 155.0	9/16/2022
10,636.1	6,729.7	PROPPANT FRAC, 10881-11064, 9/17/2022	NIOBRARA, Original Hole		4	11 180.0	11 181.0	9/16/2022
10,819.9	6,728.4	PROPPANT FRAC, 11093-11277, 9/17/2022	NIOBRARA, Original Hole		4	11 215.0	11 216.0	9/16/2022
11,001.0	6,727.8	PROPPANT FRAC, 11306-11489, 9/16/2022	NIOBRARA, Original Hole		4	11 245.0	11 246.0	9/16/2022
11,181.1	6,728.3	SAND FRAC, 11518-11697, 9/16/2022	NIOBRARA, Original Hole		4	11 276.0	11 277.0	9/16/2022
11,367.1	6,729.8	SAND FRAC, 11730-11914, 9/16/2022	NIOBRARA, Original Hole		4	11 308.0	11 309.0	9/16/2022
11,576.1	6,730.5	PROPPANT FRAC, 11943-12126, 9/15/2022	NIOBRARA, Original Hole		4	11 336.0	11 337.0	9/16/2022
11,761.1	6,730.4	PROPPANT FRAC, 12160-12339, 9/15/2022	NIOBRARA, Original Hole		4	11 366.0	11 367.0	9/16/2022
11,973.1	6,729.2	PROPPANT FRAC, 12368-12551, 9/15/2022	NIOBRARA, Original Hole		4	11 397.0	11 398.0	9/16/2022
12,181.1	6,730.1	PROPPANT FRAC, 12580-12762, 9/14/2022	NIOBRARA, Original Hole		4	11 427.0	11 428.0	9/16/2022
12,388.1	6,732.4	PROPPANT FRAC, 12792-12975, 9/14/2022	NIOBRARA, Original Hole		4	11 458.0	11 459.0	9/16/2022
12,589.0	6,734.8	SAND FRAC, 13005-13188, 9/14/2022	NIOBRARA, Original Hole		4	11 488.0	11 489.0	9/16/2022
12,755.9	6,736.2	SAND FRAC, 13214-13401, 9/14/2022	NIOBRARA, Original Hole		4	11 518.0	11 519.0	9/16/2022
12,945.9	6,735.2	SAND FRAC, 13435-13613, 9/13/2022	NIOBRARA, Original Hole		4	11 548.0	11 549.0	9/16/2022
13,127.0	6,736.1	SAND FRAC, 13640-13825, 9/13/2022	NIOBRARA, Original Hole		4	11 576.0	11 577.0	9/16/2022
13,338.9	6,736.0	SAND FRAC, 13853-14038, 9/12/2022	NIOBRARA, Original Hole		4	11 609.0	11 610.0	9/16/2022
13,522.0	6,736.2	SAND FRAC, 14066-14248, 9/12/2022	NIOBRARA, Original Hole		4	11 640.0	11 641.0	9/16/2022
13,733.9	6,736.6	SAND FRAC, 14279-14463, 9/12/2022	NIOBRARA, Original Hole		4	11 666.0	11 667.0	9/16/2022
13,916.0	6,736.6	SAND FRAC, 14492-14675, 9/12/2022	NIOBRARA, Original Hole		4	11 696.0	11 697.0	9/16/2022
14,105.6	6,736.8	SAND FRAC, 14675-14887, 9/12/2022	NIOBRARA, Original Hole		4	11 730.0	11 731.0	9/16/2022
14,279.9	6,737.1	SAND FRAC, 14829-15010, 9/11/2022	NIOBRARA, Original Hole		4	11 762.0	11 763.0	9/16/2022
14,492.1	6,737.6	SAND FRAC, 15129-15307, 9/11/2022	NIOBRARA, Original Hole		4	11 791.0	11 792.0	9/16/2022
14,674.9	6,737.5	SAND FRAC, 15341-15525, 9/10/2022	NIOBRARA, Original Hole		4	11 822.0	11 823.0	9/16/2022
14,886.2	6,736.7	SAND FRAC, 15554-15737, 9/10/2022	NIOBRARA, Original Hole		4	11 852.0	11 853.0	9/16/2022
15,073.2	6,736.1	PROPPANT FRAC, 15786-15949, 9/10/2022	NIOBRARA, Original Hole		4	11 882.0	11 883.0	9/16/2022
15,279.9	6,734.9	PROPPANT FRAC, 15978-16162, 9/10/2022	NIOBRARA, Original Hole		4	11 913.0	11 914.0	9/16/2022
15,483.9	6,734.2	SAND FRAC, 16191-16371, 9/9/2022	NIOBRARA, Original Hole		4	11 943.0	11 944.0	9/15/2022
15,646.0	6,733.1	SAND FRAC, 16403-16587, 9/9/2022	NIOBRARA, Original Hole		4	11 973.0	11 974.0	9/15/2022
15,828.1	6,733.0	SAND FRAC, 16587-16798, 9/9/2022	NIOBRARA, Original Hole		4	12 004.0	12 005.0	9/15/2022
16,030.0	6,733.4	SAND FRAC, 16798-16999, 9/9/2022	NIOBRARA, Original Hole		4	12 034.0	12 035.0	9/15/2022
16,217.8	6,734.4	SAND FRAC, 16999-17204, 9/8/2022	NIOBRARA, Original Hole		4	12 064.0	12 065.0	9/15/2022
16,403.9	6,735.4	PROPPANT FRAC, 17204-17224, 9/8/2022	NIOBRARA, Original Hole		4	12 095.0	12 096.0	9/15/2022
16,616.1	6,735.9	PROPPANT FRAC, 17253-17375, 9/8/2022	NIOBRARA, Original Hole		4	12 125.0	12 126.0	9/15/2022
16,798.9	6,735.9		NIOBRARA, Original Hole		4	12 160.0	12 161.0	9/15/2022
17,009.8	6,736.7		NIOBRARA, Original Hole		4	12 186.0	12 187.0	9/15/2022
17,192.9	6,737.0		NIOBRARA, Original Hole		4	12 216.0	12 217.0	9/15/2022
17,375.0	6,737.4		NIOBRARA, Original Hole		4	12 250.0	12 251.0	9/15/2022
			NIOBRARA, Original Hole		4	12 277.0	12 278.0	9/15/2022

Land, Original Hole, 11/4/2022 10:29:53 AM		
MD (ftKB)	TVD (ftKB)	Vertical schematic (actual)
1,941.3	1,941.2	
7,231.0	6,754.2	
7,531.1	6,735.7	
7,682.2	6,736.0	
7,807.2	6,735.9	
8,087.9	6,736.9	
8,301.8	6,737.9	
8,484.9	6,738.6	
8,695.9	6,737.3	
8,876.9	6,735.0	
9,084.0	6,734.9	
9,273.0	6,735.3	
9,452.1	6,736.2	
9,607.0	6,735.9	
9,847.1	6,734.1	
10,082.0	6,732.2	
10,245.1	6,730.5	
10,456.0	6,730.2	
10,636.1	6,729.7	
10,819.9	6,728.4	
11,001.0	6,727.8	
11,181.1	6,728.3	
11,367.1	6,729.8	
11,576.1	6,730.5	
11,783.1	6,730.4	
11,973.1	6,729.2	
12,181.1	6,730.1	
12,388.1	6,732.4	
12,580.9	6,734.8	
12,755.9	6,736.2	
12,945.9	6,735.2	
13,127.0	6,736.1	
13,338.9	6,736.0	
13,523.0	6,736.2	
13,733.9	6,736.6	
13,916.0	6,736.6	
14,105.6	6,736.8	
14,279.9	6,737.1	
14,492.1	6,737.6	
14,674.9	6,737.5	
14,886.2	6,736.7	
15,073.2	6,736.1	
15,279.9	6,734.9	
15,463.9	6,734.2	
15,646.0	6,733.1	
15,826.1	6,733.0	
16,030.0	6,733.4	
16,217.8	6,734.4	
16,403.9	6,735.4	
16,616.1	6,735.9	
16,798.9	6,735.9	
17,009.8	6,736.7	
17,192.0	6,737.0	
17,375.0	6,737.4	

Perforation Data					
Linked Zone	Explosive Type	Sum of Entered Shot Total	Top (ftKB)	Btm (ftKB)	Date
NIOBRARA, Original Hole		4	12 338.0	12 339.0	9/15/2022
NIOBRARA, Original Hole		4	12 368.0	12 369.0	9/15/2022
NIOBRARA, Original Hole		4	12 398.0	12 399.0	9/15/2022
NIOBRARA, Original Hole		4	12 428.0	12 429.0	9/15/2022
NIOBRARA, Original Hole		4	12 459.0	12 460.0	9/15/2022
NIOBRARA, Original Hole		4	12 489.0	12 490.0	9/15/2022
NIOBRARA, Original Hole		4	12 520.0	12 521.0	9/15/2022
NIOBRARA, Original Hole		4	12 550.0	12 551.0	9/15/2022
NIOBRARA, Original Hole		4	12 580.0	12 581.0	9/14/2022
NIOBRARA, Original Hole		4	12 610.0	12 611.0	9/14/2022
NIOBRARA, Original Hole		4	12 641.0	12 642.0	9/14/2022
NIOBRARA, Original Hole		4	12 671.0	12 672.0	9/14/2022
NIOBRARA, Original Hole		4	12 702.0	12 703.0	9/14/2022
NIOBRARA, Original Hole		4	12 728.0	12 729.0	9/14/2022
NIOBRARA, Original Hole		4	12 756.0	12 757.0	9/14/2022
NIOBRARA, Original Hole		4	12 792.0	12 793.0	9/14/2022
NIOBRARA, Original Hole		4	12 825.0	12 826.0	9/14/2022
NIOBRARA, Original Hole		4	12 853.0	12 854.0	9/14/2022
NIOBRARA, Original Hole		4	12 885.0	12 885.0	9/14/2022
NIOBRARA, Original Hole		4	12 914.0	12 915.0	9/14/2022
NIOBRARA, Original Hole		4	12 944.0	12 945.0	9/14/2022
NIOBRARA, Original Hole		4	12 975.0	12 976.0	9/14/2022
NIOBRARA, Original Hole		4	13 005.0	13 006.0	9/14/2022
NIOBRARA, Original Hole		4	13 035.0	13 036.0	9/14/2022
NIOBRARA, Original Hole		4	13 066.0	13 067.0	9/14/2022
NIOBRARA, Original Hole		4	13 096.0	13 097.0	9/14/2022
NIOBRARA, Original Hole		4	13 126.0	13 127.0	9/14/2022
NIOBRARA, Original Hole		4	13 157.0	13 158.0	9/14/2022
NIOBRARA, Original Hole		4	13 187.0	13 188.0	9/14/2022
NIOBRARA, Original Hole		4	13 214.0	13 215.0	9/13/2022
NIOBRARA, Original Hole		4	13 248.0	13 249.0	9/13/2022
NIOBRARA, Original Hole		4	13 278.0	13 279.0	9/13/2022
NIOBRARA, Original Hole		4	13 308.0	13 309.0	9/13/2022
NIOBRARA, Original Hole		4	13 339.0	13 340.0	9/13/2022
NIOBRARA, Original Hole		4	13 369.0	13 370.0	9/13/2022
NIOBRARA, Original Hole		4	13 400.0	13 401.0	9/13/2022
NIOBRARA, Original Hole		4	13 435.0	13 436.0	9/13/2022
NIOBRARA, Original Hole		4	13 460.0	13 461.0	9/13/2022
NIOBRARA, Original Hole		4	13 490.0	13 491.0	9/13/2022
NIOBRARA, Original Hole		4	13 521.0	13 522.0	9/13/2022
NIOBRARA, Original Hole		4	13 551.0	13 552.0	9/13/2022
NIOBRARA, Original Hole		4	13 582.0	13 583.0	9/13/2022
NIOBRARA, Original Hole		4	13 612.0	13 613.0	9/13/2022
NIOBRARA, Original Hole		4	13 640.0	13 641.0	9/13/2022
NIOBRARA, Original Hole		4	13 672.0	13 673.0	9/13/2022
NIOBRARA, Original Hole		4	13 703.0	13 704.0	9/13/2022
NIOBRARA, Original Hole		4	13 734.0	13 735.0	9/13/2022
NIOBRARA, Original Hole		4	13 764.0	13 765.0	9/13/2022
NIOBRARA, Original Hole		4	13 794.0	13 795.0	9/13/2022
NIOBRARA, Original Hole		4	13 824.0	13 825.0	9/13/2022
NIOBRARA, Original Hole		4	13 853.0	13 854.0	9/12/2022
NIOBRARA, Original Hole		4	13 885.0	13 886.0	9/12/2022
NIOBRARA, Original Hole		4	13 915.0	13 916.0	9/12/2022
NIOBRARA, Original Hole		4	13 949.0	13 950.0	9/12/2022
NIOBRARA, Original Hole		4	13 976.0	13 977.0	9/12/2022





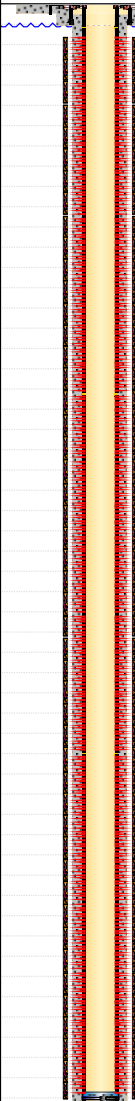
Land, Original Hole, 11/4/2022 10:29:53 AM		
MD (ftKB)	TVD (ftKB)	Vertical schematic (actual)
1,941.3	1,941.2	
7,231.0	6,754.2	
7,531.1	6,735.7	
7,682.2	6,736.0	
7,807.2	6,735.9	
8,087.9	6,736.9	
8,301.8	6,737.9	
8,484.9	6,738.6	
8,695.9	6,737.3	
8,876.9	6,735.0	
9,084.0	6,734.9	
9,273.0	6,735.3	
9,452.1	6,736.2	
9,607.0	6,735.9	
9,847.1	6,734.1	
10,082.0	6,732.2	
10,245.1	6,730.5	
10,456.0	6,730.2	
10,636.1	6,729.7	
10,819.9	6,728.4	
11,001.0	6,727.8	
11,181.1	6,728.3	
11,367.1	6,729.8	
11,576.1	6,730.5	
11,763.1	6,730.4	
11,973.1	6,729.2	
12,161.1	6,730.1	
12,368.1	6,732.4	
12,550.9	6,734.8	
12,755.9	6,736.2	
12,945.9	6,735.2	
13,127.0	6,736.1	
13,336.9	6,736.0	
13,523.0	6,736.2	
13,733.9	6,736.6	
13,916.0	6,736.6	
14,105.6	6,736.8	
14,279.9	6,737.1	
14,492.1	6,737.6	
14,674.9	6,737.5	
14,886.2	6,736.7	
15,073.2	6,736.1	
15,279.9	6,734.9	
15,463.9	6,734.2	
15,646.0	6,733.1	
15,826.1	6,733.0	
16,030.0	6,733.4	
16,217.8	6,734.4	
16,403.9	6,735.4	
16,616.1	6,735.9	
16,798.9	6,735.9	
17,009.8	6,736.7	
17,192.0	6,737.0	
17,375.0	6,737.4	

Perforation Data					
Linked Zone	Explo sive Type	Sum of Enter e d Shot Total	Top (ftKB)	Btm (ftKB)	Date
NIOBRARA, Original Hole		4	15 734.0	15 735.0	9/10/2022
NIOBRARA, Original Hole		4	15 766.0	15 767.0	9/10/2022
NIOBRARA, Original Hole		4	15 793.0	15 794.0	9/10/2022
NIOBRARA, Original Hole		4	15 827.0	15 828.0	9/10/2022
NIOBRARA, Original Hole		4	15 857.0	15 858.0	9/10/2022
NIOBRARA, Original Hole		4	15 888.0	15 889.0	9/10/2022
NIOBRARA, Original Hole		4	15 918.0	15 919.0	9/10/2022
NIOBRARA, Original Hole		4	15 948.0	15 949.0	9/10/2022
NIOBRARA, Original Hole		4	15 978.0	15 979.0	9/9/2022
NIOBRARA, Original Hole		4	16 010.0	16 011.0	9/9/2022
NIOBRARA, Original Hole		4	16 039.0	16 040.0	9/9/2022
NIOBRARA, Original Hole		4	16 070.0	16 071.0	9/9/2022
NIOBRARA, Original Hole		4	16 100.0	16 101.0	9/9/2022
NIOBRARA, Original Hole		4	16 130.0	16 131.0	9/9/2022
NIOBRARA, Original Hole		4	16 160.0	16 161.0	9/9/2022
NIOBRARA, Original Hole		4	16 191.0	16 192.0	9/9/2022
NIOBRARA, Original Hole		4	16 218.0	16 219.0	9/9/2022
NIOBRARA, Original Hole		4	16 252.0	16 253.0	9/9/2022
NIOBRARA, Original Hole		4	16 282.0	16 283.0	9/9/2022
NIOBRARA, Original Hole		4	16 312.0	16 313.0	9/9/2022
NIOBRARA, Original Hole		4	16 343.0	16 344.0	9/9/2022
NIOBRARA, Original Hole		4	16 370.0	16 371.0	9/9/2022
NIOBRARA, Original Hole		4	16 403.0	16 404.0	9/9/2022
NIOBRARA, Original Hole		4	16 431.0	16 432.0	9/9/2022
NIOBRARA, Original Hole		4	16 464.0	16 465.0	9/9/2022
NIOBRARA, Original Hole		4	16 494.0	16 495.0	9/9/2022
NIOBRARA, Original Hole		4	16 526.0	16 527.0	9/9/2022
NIOBRARA, Original Hole		4	16 555.0	16 556.0	9/9/2022
NIOBRARA, Original Hole		4	16 586.0	16 587.0	9/9/2022
NIOBRARA, Original Hole		4	16 616.0	16 617.0	9/8/2022
NIOBRARA, Original Hole		4	16 646.0	16 647.0	9/8/2022
NIOBRARA, Original Hole		4	16 676.0	16 677.0	9/8/2022
NIOBRARA, Original Hole		4	16 707.0	16 708.0	9/8/2022
NIOBRARA, Original Hole		4	16 738.0	16 739.0	9/8/2022
NIOBRARA, Original Hole		4	16 768.0	16 769.0	9/8/2022
NIOBRARA, Original Hole		4	16 798.0	16 799.0	9/8/2022
NIOBRARA, Original Hole		4	16 828.0	16 829.0	9/8/2022
NIOBRARA, Original Hole		4	16 858.0	16 859.0	9/8/2022
NIOBRARA, Original Hole		4	16 889.0	16 890.0	9/8/2022
NIOBRARA, Original Hole		4	16 919.0	16 920.0	9/8/2022
NIOBRARA, Original Hole		4	16 952.0	16 953.0	9/8/2022
NIOBRARA, Original Hole		4	16 980.0	16 981.0	9/8/2022
NIOBRARA, Original Hole		4	17 010.0	17 011.0	9/8/2022
NIOBRARA, Original Hole		4	17 040.0	17 041.0	9/8/2022
NIOBRARA, Original Hole		4	17 071.0	17 072.0	9/8/2022
NIOBRARA, Original Hole		4	17 101.0	17 102.0	9/8/2022
NIOBRARA, Original Hole		4	17 132.0	17 133.0	9/8/2022
NIOBRARA, Original Hole		4	17 162.0	17 163.0	9/8/2022
NIOBRARA, Original Hole		4	17 192.0	17 193.0	9/8/2022
NIOBRARA, Original Hole		4	17 223.0	17 224.0	9/8/2022
NIOBRARA, Original Hole		4	17 253.0	17 254.0	9/7/2022
NIOBRARA, Original Hole		4	17 283.0	17 284.0	9/7/2022
NIOBRARA, Original Hole		4	17 314.0	17 315.0	9/7/2022
NIOBRARA, Original Hole		4	17 344.0	17 345.0	9/7/2022
Total (Sum)		1,332			

Land, Original Hole, 11/4/2022 10:29:53 AM			Stimulation Intervals				
MD (ftKB)	TVD (ftKB)	Vertical schematic (actual)	Interval	Start Date	Primary Job Type	Zone	
1,941.3	1,941.2		1	9/8/2022	Complete	NIOBRARA, Original Hole	
7,331.0	6,734.2		Technical Result	Tech Result Details		Tech Result Note	
7,531.1	6,735.7		Success -	Pumped as			
7,688.2	6,736.0		Pumped as	designed			
7,807.2	6,735.9		Planned				
8,087.9	6,736.9		PROPPANT FRAC, 7270-7453, 9/22/2022	Comment			
8,301.8	6,737.9		PROPPANT FRAC, 7452-7665, 9/21/2022	FRAC NOTES ATTACHED			
8,484.9	6,738.6		PROPPANT FRAC, 7665-7877, 9/21/2022	Interval	Start Date	Primary Job Type	Zone
8,695.9	6,737.3		PROPPANT FRAC, 7907-8088, 9/21/2022	2	9/8/2022	Complete	NIOBRARA, Original Hole
8,876.9	6,735.0		PROPPANT FRAC, 8120-8303, 9/21/2022	Technical Result	Tech Result Details		Tech Result Note
9,084.0	6,734.9		PROPPANT FRAC, 8332-8510, 9/20/2022	Success -	Pumped as		
9,273.0	6,735.3		PROPPANT FRAC, 8544-8728, 9/20/2022	Pumped as	designed		
9,452.1	6,736.2		PROPPANT FRAC, 8757-8940, 9/20/2022	Planned			
9,607.0	6,735.9		PROPPANT FRAC, 8969-9153, 9/19/2022	Comment			
9,847.1	6,734.1		PROPPANT FRAC, 9182-9364, 9/19/2022	FRAC NOTES ATTACHED			
10,082.0	6,732.2		PROPPANT FRAC, 9394-9577, 9/19/2022	Interval	Start Date	Primary Job Type	Zone
10,245.1	6,730.5		PROPPANT FRAC, 9606-9786, 9/19/2022	3	9/8/2022	Complete	NIOBRARA, Original Hole
10,456.0	6,730.2		PROPPANT FRAC, 9819-10002, 9/18/2022	Technical Result	Tech Result Details		Tech Result Note
10,636.1	6,729.7		PROPPANT FRAC, 10031-10211, 9/18/2022	Success -	Pumped as		
10,819.9	6,728.4		SAND FRAC, 10244-10429, 9/18/2022	Pumped as	designed		
11,001.0	6,727.8		PROPPANT FRAC, 10456-10639, 9/17/2022	Planned			
11,181.1	6,728.3		PROPPANT FRAC, 10668-10852, 9/17/2022	Comment			
11,367.1	6,729.8		PROPPANT FRAC, 10881-11064, 9/17/2022	FRAC NOTES ATTACHED			
11,576.1	6,730.5		PROPPANT FRAC, 11093-11277, 9/17/2022	Interval	Start Date	Primary Job Type	Zone
11,763.1	6,730.4		SAND FRAC, 11306-11489, 9/16/2022	4	9/9/2022	Complete	NIOBRARA, Original Hole
11,973.1	6,729.2		SAND FRAC, 11518-11697, 9/16/2022	Technical Result	Tech Result Details		Tech Result Note
12,161.1	6,730.1		SAND FRAC, 11730-11914, 9/16/2022	Success -	Pumped as		
12,368.1	6,732.4		PROPPANT FRAC, 11943-12126, 9/15/2022	Pumped as	designed		
12,550.9	6,734.8		PROPPANT FRAC, 12160-12339, 9/15/2022	Planned			
12,755.9	6,736.2		PROPPANT FRAC, 12368-12551, 9/15/2022	Comment			
12,945.9	6,735.2		PROPPANT FRAC, 12580-12762, 9/14/2022	FRAC NOTES ATTACHED			
13,127.0	6,736.1		PROPPANT FRAC, 12792-12975, 9/14/2022	Interval	Start Date	Primary Job Type	Zone
13,338.9	6,736.0		SAND FRAC, 13005-13188, 9/14/2022	5	9/9/2022	Complete	NIOBRARA, Original Hole
13,523.0	6,736.2		SAND FRAC, 13214-13401, 9/14/2022	Technical Result	Tech Result Details		Tech Result Note
13,733.9	6,736.6		SAND FRAC, 13435-13613, 9/13/2022	Success -	Pumped as		
13,916.0	6,736.6		SAND FRAC, 13640-13825, 9/13/2022	Pumped as	designed		
14,105.6	6,736.8		SAND FRAC, 13853-14038, 9/12/2022	Planned			
14,279.9	6,737.1		SAND FRAC, 14066-14248, 9/12/2022	Comment			
14,492.1	6,737.6		SAND FRAC, 14279-14463, 9/12/2022	FRAC NOTES ATTACHED			
14,674.9	6,737.5		SAND FRAC, 14492-14675, 9/12/2022	Interval	Start Date	Primary Job Type	Zone
14,886.2	6,736.7		SAND FRAC, 14704-14887, 9/11/2022	6	9/9/2022	Complete	NIOBRARA, Original Hole
15,073.2	6,736.1		SAND FRAC, 14916-15100, 9/11/2022	Technical Result	Tech Result Details		Tech Result Note
15,279.9	6,734.9		SAND FRAC, 15129-15307, 9/11/2022	Success -	Pumped as		
15,463.9	6,734.2		SAND FRAC, 15341-15525, 9/10/2022	Pumped as	designed		
15,646.0	6,733.1		SAND FRAC, 15554-15737, 9/10/2022	Planned			
15,826.1	6,733.0		PROPPANT FRAC, 15766-15949, 9/10/2022	Comment			
16,030.0	6,733.4		PROPPANT FRAC, 15978-16162, 9/10/2022	FRAC NOTES ATTACHED			
16,217.8	6,734.4		SAND FRAC, 16191-16371, 9/9/2022				
16,403.9	6,735.4		SAND FRAC, 16403-16587, 9/9/2022				
16,616.1	6,735.9		SAND FRAC, 16616-16799, 9/9/2022				
16,798.9	6,735.9		SAND FRAC, 16828-17011, 9/8/2022				
17,009.8	6,736.7		PROPPANT FRAC, 17040-17224, 9/8/2022				
17,192.9	6,737.0		PROPPANT FRAC, 17253-17375, 9/8/2022				
17,375.0	6,737.4						



Land, Original Hole, 11/4/2022 10:29:54 AM			Stimulation Intervals						
MD (ftKB)	TVD (ftKB)	Vertical schematic (actual)	Interval	Start Date	Primary Job Type	Zone			
1,941.3	1,941.2		11	9/11/2022	Complete	NIOBRARA, Original Hole			
7,231.0	6,734.2		Technical Result	Tech Result Details		Tech Result Note			
7,513.1	6,735.7		Success -	Pumped as					
7,688.2	6,736.0		Planned	designed					
7,807.2	6,735.9		Comment						
8,087.9	6,736.9		FRAC NOTES ATTACHED						
8,301.8	6,737.9		PROPPANT FRAC, 7270-7453, 9/22/2022	Interval	Start Date	Primary Job Type	Zone		
8,484.3	6,738.6		PROPPANT FRAC, 7462-7665, 9/21/2022	12	9/11/2022	Complete	NIOBRARA, Original Hole		
8,695.9	6,737.3		PROPPANT FRAC, 7695-7877, 9/21/2022	Technical Result	Tech Result Details		Tech Result Note		
8,876.9	6,735.0		PROPPANT FRAC, 7907-8088, 9/21/2022	Success -	Pumped as				
9,084.0	6,734.9		PROPPANT FRAC, 8120-8303, 9/21/2022	Planned	designed				
9,273.0	6,735.3		PROPPANT FRAC, 8332-8510, 9/20/2022	Comment					
9,452.1	6,736.2		PROPPANT FRAC, 8544-8728, 9/20/2022	FRAC NOTES ATTACHED					
9,607.0	6,735.9		PROPPANT FRAC, 8757-8940, 9/20/2022	Interval	Start Date	Primary Job Type	Zone		
9,847.1	6,734.1		PROPPANT FRAC, 8969-9153, 9/19/2022	13	9/11/2022	Complete	NIOBRARA, Original Hole		
10,082.0	6,732.2		PROPPANT FRAC, 9182-9364, 9/19/2022	Technical Result	Tech Result Details		Tech Result Note		
10,245.1	6,730.5		PROPPANT FRAC, 9394-9577, 9/19/2022	Success -	Pumped as				
10,456.0	6,730.2		PROPPANT FRAC, 9606-9786, 9/19/2022	Planned	designed				
10,636.1	6,729.7		PROPPANT FRAC, 9819-10002, 9/18/2022	Comment					
10,819.9	6,728.4		PROPPANT FRAC, 10031-10211, 9/18/2022	FRAC NOTES ATTACHED					
11,001.0	6,727.8		SAND FRAC, 10244-10429, 9/18/2022	Interval	Start Date	Primary Job Type	Zone		
11,181.1	6,728.3		PROPPANT FRAC, 10456-10639, 9/17/2022	14	9/12/2022	Complete	NIOBRARA, Original Hole		
11,367.1	6,729.8		PROPPANT FRAC, 10668-10852, 9/17/2022	Technical Result	Tech Result Details		Tech Result Note		
11,576.1	6,730.5		PROPPANT FRAC, 10881-11064, 9/17/2022	Success -	Pumped as				
11,763.1	6,730.4		PROPPANT FRAC, 11093-11277, 9/17/2022	Planned	designed				
11,973.1	6,729.2		PROPPANT FRAC, 11306-11489, 9/16/2022	Comment					
12,161.1	6,730.1		SAND FRAC, 11518-11697, 9/16/2022	FRAC NOTES ATTACHED					
12,368.1	6,732.4		SAND FRAC, 11730-11914, 9/16/2022	Interval	Start Date	Primary Job Type	Zone		
12,550.9	6,734.8		PROPPANT FRAC, 11943-12126, 9/15/2022	15	9/12/2022	Complete	NIOBRARA, Original Hole		
12,755.9	6,736.2		PROPPANT FRAC, 12160-12339, 9/15/2022	Technical Result	Tech Result Details		Tech Result Note		
12,945.9	6,735.2		PROPPANT FRAC, 12368-12551, 9/15/2022	Success -	Pumped as				
13,127.0	6,736.1		PROPPANT FRAC, 12580-12762, 9/14/2022	Planned	designed				
13,338.9	6,736.0		PROPPANT FRAC, 12792-12975, 9/14/2022	Comment					
13,523.0	6,736.2		SAND FRAC, 13005-13188, 9/14/2022	FRAC NOTES ATTACHED					
13,733.9	6,736.6		SAND FRAC, 13214-13401, 9/14/2022	Interval	Start Date	Primary Job Type	Zone		
13,916.0	6,736.6		SAND FRAC, 13435-13613, 9/13/2022	16	9/12/2022	Complete	NIOBRARA, Original Hole		
14,105.6	6,736.8		SAND FRAC, 13640-13825, 9/13/2022	Technical Result	Tech Result Details		Tech Result Note		
14,279.9	6,737.1		SAND FRAC, 13853-14038, 9/12/2022	Success -	Pumped as				
14,492.1	6,737.6		SAND FRAC, 14066-14248, 9/12/2022	Planned	designed				
14,674.9	6,737.5		SAND FRAC, 14279-14463, 9/12/2022	Comment					
14,886.2	6,736.7		SAND FRAC, 14492-14675, 9/12/2022	FRAC NOTES ATTACHED					
15,073.2	6,736.1		SAND FRAC, 14704-14887, 9/11/2022	Interval	Start Date	Primary Job Type	Zone		
15,279.9	6,734.9		SAND FRAC, 14916-15100, 9/11/2022	17	9/12/2022	Complete	NIOBRARA, Original Hole		
15,463.9	6,734.2		SAND FRAC, 15129-15307, 9/11/2022	Technical Result	Tech Result Details		Tech Result Note		
15,646.0	6,733.1		SAND FRAC, 15341-15525, 9/10/2022	Success -	Pumped as				
15,826.1	6,733.0		PROPPANT FRAC, 15554-15737, 9/10/2022	Planned	designed				
16,030.0	6,733.4		PROPPANT FRAC, 15766-15949, 9/10/2022	Comment					
16,217.8	6,734.4		PROPPANT FRAC, 15978-16162, 9/10/2022	FRAC NOTES ATTACHED					
16,403.9	6,735.4		SAND FRAC, 16191-16371, 9/9/2022						
16,616.1	6,735.9		SAND FRAC, 16403-16587, 9/9/2022						
16,798.9	6,735.9		SAND FRAC, 16616-16799, 9/9/2022						
17,009.8	6,736.7		SAND FRAC, 16828-17011, 9/8/2022						
17,192.9	6,737.0		PROPPANT FRAC, 17040-17224, 9/8/2022						
17,375.0	6,737.4		PROPPANT FRAC, 17253-17375, 9/8/2022						

Land, Original Hole, 11/4/2022 10:29:54 AM			Stimulation Intervals					
MD (ftKB)	TVD (ftKB)	Vertical schematic (actual)	Interval	Start Date	Primary Job Type	Zone		
1,941.3	1,941.2		21	9/14/2022	Complete	NIOBRARA, Original Hole		
7,331.0	6,734.2		Technical Result	Tech Result Details		Tech Result Note		
7,513.1	6,735.7		Success -	Pumped as				
7,688.2	6,736.0		Planned	designed				
7,807.2	6,735.9			Comment				
8,087.9	6,736.9			FRAC NOTES ATTACHED				
8,301.8	6,737.9		PROPPANT FRAC, 7270-7453, 9/22/2022	Interval	Start Date	Primary Job Type	Zone	
8,484.3	6,738.6		PROPPANT FRAC, 7462-7665, 9/21/2022	22	9/14/2022	Complete	NIOBRARA, Original Hole	
8,695.9	6,737.3		PROPPANT FRAC, 7695-7877, 9/21/2022	Technical Result	Tech Result Details		Tech Result Note	
8,876.9	6,735.0		PROPPANT FRAC, 7907-8088, 9/21/2022	Success -	Pumped as			
9,084.0	6,734.9		PROPPANT FRAC, 8120-8303, 9/21/2022	Planned	designed			
9,273.0	6,735.3		PROPPANT FRAC, 8332-8510, 9/20/2022		Comment			
9,452.1	6,736.2		PROPPANT FRAC, 8544-8728, 9/20/2022	FRAC NOTES ATTACHED				
9,607.0	6,735.9		PROPPANT FRAC, 8757-8940, 9/20/2022	Interval	Start Date	Primary Job Type	Zone	
9,847.1	6,734.1		PROPPANT FRAC, 8969-9153, 9/19/2022	23	9/14/2022	Complete	NIOBRARA, Original Hole	
10,082.0	6,732.2		PROPPANT FRAC, 9182-9364, 9/19/2022	Technical Result	Tech Result Details		Tech Result Note	
10,245.1	6,730.5		PROPPANT FRAC, 9394-9577, 9/19/2022	Success -	Pumped as			
10,456.0	6,730.2		PROPPANT FRAC, 9606-9786, 9/19/2022	Planned	designed			
10,636.1	6,729.7		PROPPANT FRAC, 9819-10002, 9/18/2022		Comment			
10,819.9	6,728.4		PROPPANT FRAC, 10031-10211, 9/18/2022	FRAC NOTES ATTACHED				
11,001.0	6,727.8		SAND FRAC, 10244-10429, 9/18/2022	Interval	Start Date	Primary Job Type	Zone	
11,181.1	6,728.3		PROPPANT FRAC, 10456-10639, 9/17/2022	24	9/14/2022	Complete	NIOBRARA, Original Hole	
11,367.1	6,729.8		PROPPANT FRAC, 10668-10852, 9/17/2022	Technical Result	Tech Result Details		Tech Result Note	
11,576.1	6,730.5		PROPPANT FRAC, 10881-11064, 9/17/2022	Success -	Pumped as			
11,763.1	6,730.4		PROPPANT FRAC, 11093-11277, 9/17/2022	Planned	designed			
11,973.1	6,729.2		PROPPANT FRAC, 11306-11489, 9/16/2022		Comment			
12,161.1	6,730.1		SAND FRAC, 11516-11697, 9/16/2022	FRAC NOTES ATTACHED				
12,368.1	6,732.4		SAND FRAC, 11730-11914, 9/16/2022	Interval	Start Date	Primary Job Type	Zone	
12,550.9	6,734.8		PROPPANT FRAC, 11943-12126, 9/15/2022	25	9/15/2022	Complete	NIOBRARA, Original Hole	
12,755.9	6,736.2		PROPPANT FRAC, 12160-12339, 9/15/2022	Technical Result	Tech Result Details		Tech Result Note	
12,945.9	6,735.2		PROPPANT FRAC, 12368-12551, 9/15/2022	Success -	Pumped as			
13,127.0	6,736.1		PROPPANT FRAC, 12580-12762, 9/14/2022	Planned	designed			
13,338.9	6,736.0		PROPPANT FRAC, 12792-12975, 9/14/2022		Comment			
13,522.0	6,736.2		SAND FRAC, 13005-13188, 9/14/2022	FRAC NOTES ATTACHED				
13,733.9	6,736.6		SAND FRAC, 13214-13401, 9/14/2022	Interval	Start Date	Primary Job Type	Zone	
13,916.0	6,736.6		SAND FRAC, 13435-13613, 9/13/2022	26	9/15/2022	Complete	NIOBRARA, Original Hole	
14,105.6	6,736.8		SAND FRAC, 13640-13825, 9/13/2022	Technical Result	Tech Result Details		Tech Result Note	
14,279.9	6,737.1		SAND FRAC, 13853-14038, 9/12/2022	Success -	Pumped as			
14,492.1	6,737.6		SAND FRAC, 14066-14248, 9/12/2022	Planned	designed			
14,674.9	6,737.5		SAND FRAC, 14279-14463, 9/12/2022		Comment			
14,886.2	6,736.7		SAND FRAC, 14492-14675, 9/12/2022	FRAC NOTES ATTACHED				
15,073.2	6,736.1		SAND FRAC, 14704-14887, 9/11/2022	Interval	Start Date	Primary Job Type	Zone	
15,279.9	6,734.9		SAND FRAC, 14916-15100, 9/11/2022	27	9/15/2022	Complete	NIOBRARA, Original Hole	
15,463.9	6,734.2		SAND FRAC, 15129-15307, 9/11/2022	Technical Result	Tech Result Details		Tech Result Note	
15,646.0	6,733.1		SAND FRAC, 15341-15525, 9/10/2022	Success -	Pumped as			
15,826.1	6,733.0		SAND FRAC, 15554-15737, 9/10/2022	Planned	designed			
16,030.0	6,733.4		PROPPANT FRAC, 15766-15949, 9/10/2022		Comment			
16,217.8	6,734.4		PROPPANT FRAC, 15978-16162, 9/10/2022	FRAC NOTES ATTACHED				
16,317.8	6,734.4		SAND FRAC, 16191-16371, 9/9/2022	Interval	Start Date	Primary Job Type	Zone	
16,403.9	6,735.4		SAND FRAC, 16403-16587, 9/9/2022	28	9/15/2022	Complete	NIOBRARA, Original Hole	
16,616.1	6,735.9		SAND FRAC, 16616-16799, 9/9/2022	Technical Result	Tech Result Details		Tech Result Note	
16,798.9	6,735.9		SAND FRAC, 16828-17011, 9/8/2022	Success -	Pumped as			
17,009.8	6,736.7		PROPPANT FRAC, 17040-17224, 9/8/2022	Planned	designed			
17,192.9	6,737.0		PROPPANT FRAC, 17253-17375, 9/8/2022		Comment			
17,375.0	6,737.4		FRAC NOTES ATTACHED					

Land, Original Hole, 11/4/2022 10:29:54 AM			Stimulation Intervals				
MD (RKB)	TVD (RKB)	Vertical schematic (actual)	Interval	Start Date	Primary Job Type	Zone	
1,941.3	1,941.2		31	9/17/2022	Complete	NIOBRARA, Original Hole	
7,311.0	6,734.2		Technical Result	Tech Result Details		Tech Result Note	
7,513.1	6,735.7		Success -	Pumped as			
7,688.2	6,736.0		Planned	designed			
7,807.2	6,735.9		Comment				
8,087.9	6,736.9		FRAC NOTES ATTACHED				
8,301.8	6,737.9		PROPPANT FRAC, 7270-7453, 9/22/2022	Interval	Start Date	Primary Job Type	Zone
8,484.3	6,738.6		PROPPANT FRAC, 7462-7665, 9/21/2022	32	9/17/2022	Complete	NIOBRARA, Original Hole
8,695.9	6,737.3		PROPPANT FRAC, 7695-7877, 9/21/2022	Technical Result	Tech Result Details		Tech Result Note
8,876.9	6,735.0		PROPPANT FRAC, 7907-8088, 9/21/2022	Success -	Pumped as		
9,084.0	6,734.9		PROPPANT FRAC, 8120-8303, 9/21/2022	Planned	designed		
9,273.0	6,735.3		PROPPANT FRAC, 8332-8510, 9/20/2022	Comment			
9,452.1	6,736.2		PROPPANT FRAC, 8544-8728, 9/20/2022	FRAC NOTES ATTACHED			
9,657.0	6,735.9		PROPPANT FRAC, 8757-8940, 9/20/2022	Interval	Start Date	Primary Job Type	Zone
9,847.1	6,734.1		PROPPANT FRAC, 8969-9153, 9/19/2022	33	9/17/2022	Complete	NIOBRARA, Original Hole
10,082.0	6,732.2		PROPPANT FRAC, 9182-9364, 9/19/2022	Technical Result	Tech Result Details		Tech Result Note
10,245.1	6,730.5		PROPPANT FRAC, 9394-9577, 9/19/2022	Success -	Pumped as		
10,456.0	6,730.2		PROPPANT FRAC, 9606-9786, 9/19/2022	Planned	designed		
10,636.1	6,729.7		PROPPANT FRAC, 9819-10002, 9/18/2022	Comment			
10,819.9	6,728.4		PROPPANT FRAC, 10031-10211, 9/18/2022	FRAC NOTES ATTACHED			
11,001.0	6,727.8		SAND FRAC, 10244-10429, 9/18/2022	Interval	Start Date	Primary Job Type	Zone
11,181.1	6,728.3		PROPPANT FRAC, 10456-10639, 9/17/2022	34	9/17/2022	Complete	NIOBRARA, Original Hole
11,367.1	6,729.8		PROPPANT FRAC, 10668-10852, 9/17/2022	Technical Result	Tech Result Details		Tech Result Note
11,576.1	6,730.5		PROPPANT FRAC, 10881-11064, 9/17/2022	Success -	Pumped as		
11,783.1	6,730.4		PROPPANT FRAC, 11093-11277, 9/17/2022	Planned	designed		
11,973.1	6,729.2		PROPPANT FRAC, 11306-11489, 9/16/2022	Comment			
12,161.1	6,730.1		SAND FRAC, 11518-11697, 9/16/2022	FRAC NOTES ATTACHED			
12,368.1	6,732.4		SAND FRAC, 11730-11914, 9/16/2022	Interval	Start Date	Primary Job Type	Zone
12,550.9	6,734.8		PROPPANT FRAC, 11943-12126, 9/15/2022	35	9/18/2022	Complete	NIOBRARA, Original Hole
12,755.9	6,736.2		PROPPANT FRAC, 12160-12339, 9/15/2022	Technical Result	Tech Result Details		Tech Result Note
12,945.9	6,735.2		PROPPANT FRAC, 12368-12551, 9/15/2022	Success -	Pumped as		
13,127.0	6,736.1		PROPPANT FRAC, 12580-12762, 9/14/2022	Planned	designed		
13,338.9	6,736.0		PROPPANT FRAC, 12792-12975, 9/14/2022	Comment			
13,523.0	6,736.2		SAND FRAC, 13005-13188, 9/14/2022	FRAC NOTES ATTACHED			
13,733.9	6,736.6		SAND FRAC, 13214-13401, 9/14/2022	Interval	Start Date	Primary Job Type	Zone
13,916.0	6,736.6		SAND FRAC, 13435-13613, 9/13/2022	36	9/18/2022	Complete	NIOBRARA, Original Hole
14,105.6	6,736.8		SAND FRAC, 13640-13825, 9/13/2022	Technical Result	Tech Result Details		Tech Result Note
14,279.9	6,737.1		SAND FRAC, 13853-14038, 9/12/2022	Success -	Pumped as		
14,492.1	6,737.6		SAND FRAC, 14066-14248, 9/12/2022	Planned	designed		
14,674.9	6,737.5		SAND FRAC, 14279-14463, 9/12/2022	Comment			
14,886.2	6,736.7		SAND FRAC, 14492-14675, 9/12/2022	FRAC NOTES ATTACHED			
15,073.2	6,736.1		SAND FRAC, 14704-14887, 9/11/2022	Interval	Start Date	Primary Job Type	Zone
15,279.9	6,734.9		SAND FRAC, 14916-15100, 9/11/2022	37	9/18/2022	Complete	NIOBRARA, Original Hole
15,463.9	6,734.2		SAND FRAC, 15129-15307, 9/11/2022	Technical Result	Tech Result Details		Tech Result Note
15,646.0	6,733.1		SAND FRAC, 15341-15525, 9/10/2022	Success -	Pumped as		
15,826.1	6,733.0		PROPPANT FRAC, 15554-15737, 9/10/2022	Planned	designed		
16,030.0	6,733.4		PROPPANT FRAC, 15766-15949, 9/10/2022	Comment			
16,217.8	6,734.4		PROPPANT FRAC, 15878-16162, 9/10/2022	FRAC NOTES ATTACHED			
16,403.9	6,735.4		SAND FRAC, 16191-16371, 9/9/2022	Interval	Start Date	Primary Job Type	Zone
16,616.1	6,735.9		SAND FRAC, 16403-16587, 9/9/2022	38	9/18/2022	Complete	NIOBRARA, Original Hole
16,798.9	6,735.9		SAND FRAC, 16616-16799, 9/9/2022	Technical Result	Tech Result Details		Tech Result Note
17,009.8	6,736.7		SAND FRAC, 16828-17011, 9/8/2022	Success -	Pumped as		
17,192.9	6,737.0		PROPPANT FRAC, 17040-17224, 9/8/2022	Planned	designed		
17,375.0	6,737.4		PROPPANT FRAC, 17253-17375, 9/8/2022	Comment			
			FRAC NOTES ATTACHED				

Land, Original Hole, 11/4/2022 10:29:54 AM			Stimulation Intervals			
MD (ftKB)	TVD (ftKB)	Vertical schematic (actual)	Interval	Start Date	Primary Job Type	Zone
1,941.3	1,941.2		41	9/20/2022	Complete	NIOBRARA, Original Hole
7,231.0	6,734.2		Technical Result	Tech Result Details		Tech Result Note
7,513.1	6,735.7		Success -	Pumped as		
7,688.2	6,736.0		Planned	designed		
7,807.2	6,735.9		Comment			
8,087.9	6,736.9		FRAC NOTES ATTACHED			
8,301.8	6,737.9		Interval	Start Date	Primary Job Type	Zone
8,484.3	6,738.6		42	9/20/2022	Complete	NIOBRARA, Original Hole
8,695.9	6,737.3		Technical Result	Tech Result Details		Tech Result Note
8,876.9	6,735.0		Success -	Pumped as		
9,084.0	6,734.9		Planned	designed		
9,273.0	6,735.3		Comment			
9,452.1	6,736.2		FRAC NOTES ATTACHED			
9,607.0	6,735.9		Interval	Start Date	Primary Job Type	Zone
9,847.1	6,734.1		43	9/20/2022	Complete	NIOBRARA, Original Hole
10,082.0	6,732.2		Technical Result	Tech Result Details		Tech Result Note
10,245.1	6,730.5		Success -	Pumped as		
10,456.0	6,730.2		Planned	designed		
10,636.1	6,729.7		Comment			
10,819.9	6,728.4		FRAC NOTES ATTACHED			
11,001.0	6,727.8		Interval	Start Date	Primary Job Type	Zone
11,181.1	6,728.3		44	9/20/2022	Complete	NIOBRARA, Original Hole
11,367.1	6,729.8		Technical Result	Tech Result Details		Tech Result Note
11,576.1	6,730.5		Success -	Pumped as		
11,763.1	6,730.4		Planned	designed		
11,973.1	6,729.2		Comment			
12,161.1	6,730.1		FRAC NOTES ATTACHED			
12,368.1	6,732.4		Interval	Start Date	Primary Job Type	Zone
12,550.9	6,734.8		45	9/21/2022	Complete	NIOBRARA, Original Hole
12,755.9	6,736.2		Technical Result	Tech Result Details		Tech Result Note
12,943.9	6,735.2		Success -	Pumped as		
13,127.0	6,736.1		Planned	designed		
13,338.9	6,736.0		Comment			
13,522.0	6,736.2		FRAC NOTES ATTACHED			
13,733.9	6,736.6		Interval	Start Date	Primary Job Type	Zone
13,916.0	6,736.6		46	9/21/2022	Complete	NIOBRARA, Original Hole
14,105.6	6,736.8		Technical Result	Tech Result Details		Tech Result Note
14,279.9	6,737.1		Success -	Pumped as		
14,492.1	6,737.6		Planned	designed		
14,674.9	6,737.5		Comment			
14,886.2	6,736.7		FRAC NOTES ATTACHED			
15,073.2	6,736.1		Interval	Start Date	Primary Job Type	Zone
15,279.9	6,734.9		47	9/21/2022	Complete	NIOBRARA, Original Hole
15,463.9	6,734.2		Technical Result	Tech Result Details		Tech Result Note
15,646.0	6,733.1		Success -	Pumped as		
15,826.1	6,733.0		Planned	designed		
16,030.0	6,733.4		Comment			
16,217.8	6,734.4		FRAC NOTES ATTACHED			
16,403.9	6,735.4					
16,616.1	6,735.9					
16,798.9	6,735.9					
17,009.8	6,736.7					
17,192.9	6,737.0					
17,375.0	6,737.4					