



## US Treatment Report

**Customer:** MALLARD EXPLORATION

**Job #:** JOB00136381

**Rep:** Hans Cary

**Job Date** Oct 06 @ 08:00

**Supervisor:** JAMES RAGLE

**Rig:** Cartel 11

**Time Requested:** Oct 06 @ 08:00

**Well:** Canvasback Fed 32-33-8HN

**Job Type:** US Primary

**UWI:** SW 1/4 NW 1/4, SEC 32, T9N, R60W, 6TH

**Time Arrived:** Oct 06 @ 00:00

**Casing-Surface**

**Surface:** Canvasback Fed 32-33-8HN

**Time Released:** Oct 06 @ 16:00

820 sk MAG PR-S 13.3 + 2.00% MCA-1 + 1.00% MCA-2 + 0.20% MCDF-P + 1.50% MCLC-2 + 0.10% MCLC-F

Yield: 1.46 ft<sup>3</sup>/sk = 213.22bbls    Mix Water: 7.14 gal/sk = 5854.8gal

BHCT (F)	91	BHST (F)	109	Surface Size (in)	9.625
Surface Grade	TBD	Surface Weight (lb/ft)	40	SURFACE Size (in)	9.625
SURFACE Grade	J55	SURFACE Weight (lb/ft)	40	Collapse Csg Pressure (psi)	2570
Float Depth (ft)	1914	Funnel Vis (sec/qt)	TBD	Max Csg Pressure (psi)	3950
Max Pressure (psi)	1500	Mud Density (lb/gal)	8.5	Mud Type	WBM
Plug Size (in)	9.625	Plug Type	Rig	TMD (ft)	1957
TVD (ft)	1835		Supplie d		

Treatment Info:    Sacks Used: 820    Sacks Not Used: 0

Preflush: 10bbls MAG Mark & 10bbls Fresh Water

Circulation Time: 1

Displace: 145bbls Fresh Water

Slurry Temp: 80    Bulk Sample: Yes

Water Temp: 68    Water Sample: Yes

Bulk Temp: 65    Slurry Sample: Yes

Air Temp: 68    Air Pressure 29.5

Slurry Returns: 65 Plug Bumped: Yes Pump Out Lines: No    Float Held: Yes

Cement Class:    Type I    Humidity: 60    Precipitation: 0

Time	Pressure psi	Annular Pressure psi	Volume Per Stage bbls	Total Stage Volume bbls	Rate bbls/mi n	Treatment Detail
11:00	0.00					Arrive on Location - ON LOCATION, REQUESTED 12"00PM GOT NUMBERS FROM COMPANY MAN
13:40	0.00					Safety Meeting - GO OVER JOB WITH RIG CREW
13:56	100.00			5	3	Fill Lines - FILL LINES
14:00	2,500.00			0.5		Start Pressure Test - TEST PUMPS AND LINES
14:02	0.00					End Pressure Test
14:03	120.00			20	3.5	Pump Preflush - 10 FRESH 10 DYE
14:07	750.00			213	6	Pump Slurry - 820SKS MAG PR-S 13.3PPG YIELD 1.46 WATER REQUITMENT 7.14, 213BBLs
14:48	0.00					Stop Pumping

14:50	0.00					Drop Plug - DROP RUBBER PLUG WITNESSED BY COMPANYMAN
14:53	650.00			130	6.5	Displace - FRESH WATER DISPLACE 65BBLS CEMENT TO SURFACE
15:14	550.00			15	3.5	Decrease Rate - SLOW TO BUMP PLUG
15:20	1,250.00					Bump Plug -
15:22	0.00					Check Floats - FLOATS HELD .5BBLS BACK TO TRUCK
15:30	0.00					Wash Up Truck
16:00	0.00					Leave Location



Customer: MALLARD EXPLORATION

Date: 10-6-2022

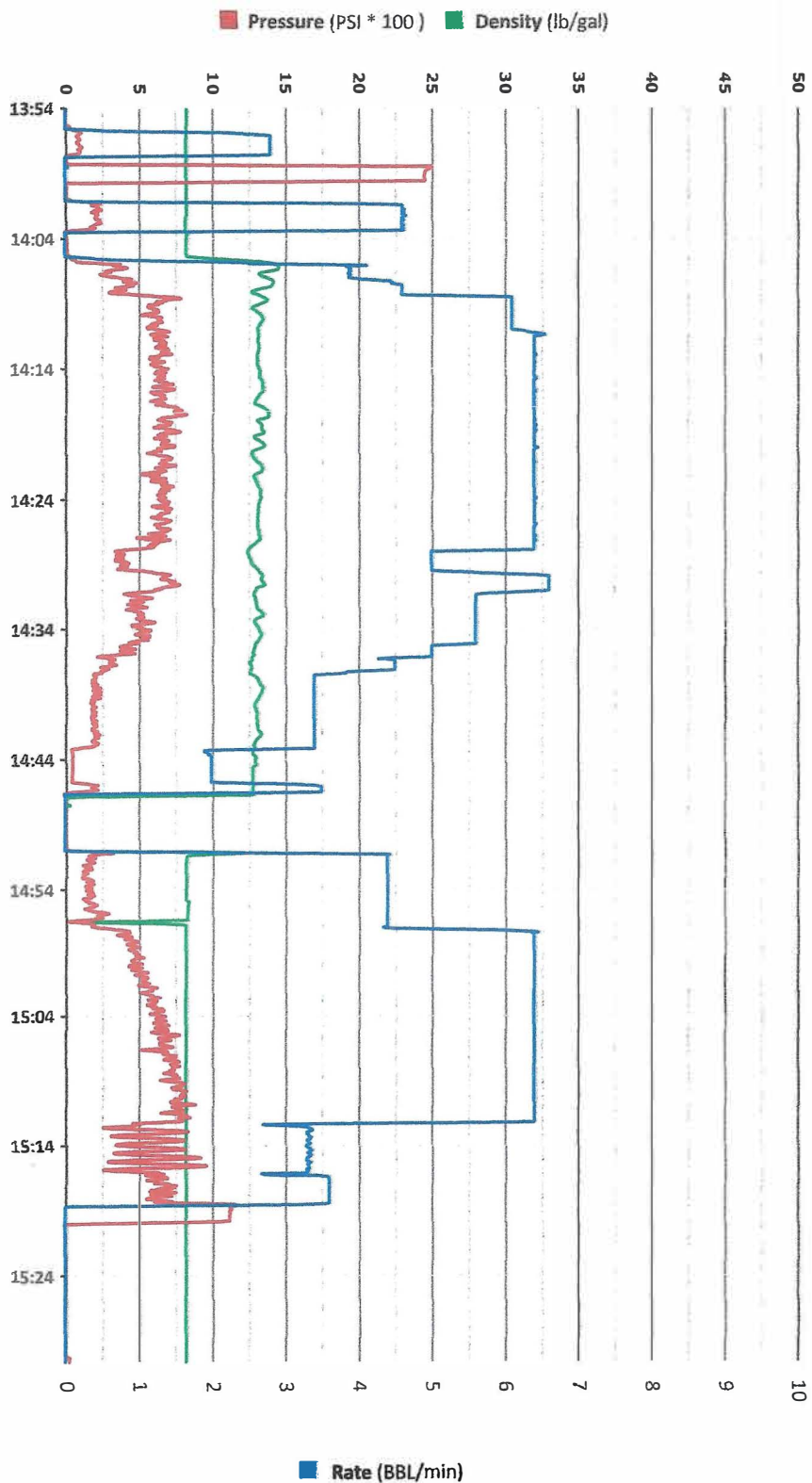
Ticket: 136381

Location: SW 1/4 NW 1/4 SEC 32 T9N R60W 6TH

Well Name: CANVASBACK FED 32-33-8H

Job Type: SURFACE

Magnum Unit #: 1014





# PUMP SCHEDULE

RATE (BPM)	EVENT	VOLUME (BBL)	DENSITY (LB/GAL)	# OF SACKS	SACK WEIGHT (LB/SK)	YIELD (FT3/SK)	MIX WATER (GAL/SK)
	Start Job			MAX PSI 1500			
3	Fill Fresh Water	5.0	8.3				
	Test Lines 2500psi	0.5	8.3				
4	MAG MARK	10.0	8.3				
4	FRESH WATER	10.0	8.3				
5	MAG PR-S 13.3	213.0	13.3	820	85.00	1.46	7.14
5	SHUT DOWN						
	DROP PLUG						
	DISPLACE	145.0	8.3				
6	SLOW						
3	BUMP PLUG						
	TOL	SURF					
	TOT	NA		Bump Plug 500psi Over			
	Spacer to Surface	20.0					
	Cement to Surface	27.0					
TOTAL	TOTAL PIPE	SHOE JOINT			FLOAT COLLAR	BBL/FT	H2O REQ.
	1,957.00	42.14			1914.00	0.0758	350
SHOE JOINT CAP.	3.10	USE MUD SCALES TO VERIFY WEIGHT					
PRESSURE TO LAND (PSI)		550			BBLs PUMPED		345
Collapse (psi)	2,570	Burst (psi)		3950		JOB#	136381
Client	MALLARD			CANVASBACK FED 32-33-1HN		Job Type	SURF
Water Temp (°F)	68	Water pH		6		Water Chlorie (mg/L)	100
Total Hardness (mg/L):	0						