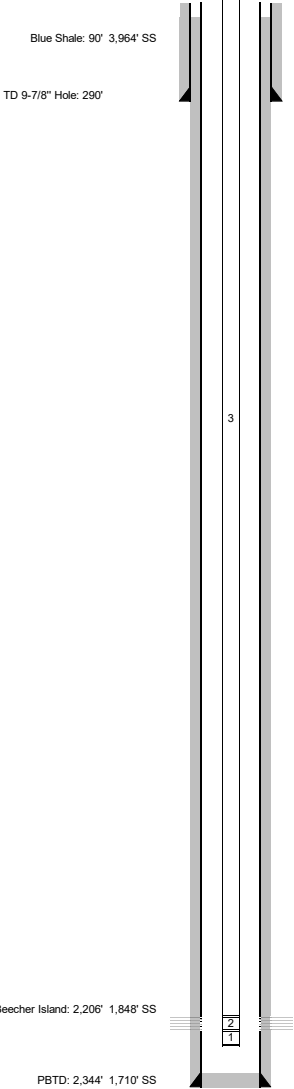


WELL NAME: Eagle 2-5
LOCATION: 2.100' FNL & 450' FWL
SWNW Sec 2, T3S, R46W
COUNTY, STATE: Yuma, Colorado
FIELD: Mildred South

GL: 4,049'
KB: 4,054'
API NO: 05-125-11022-00
Fed. Lse. No:
PBTD: 2,344'
TD: 2,405'
WI:
NRI:



CBL TOC at surface (01-15-08)

7" Surface Casing Landed at 282.47' (11-26-07)
7 jts (276.5') 7", 17#, J-55, STC
M&P 75 sx "G" + 3% CaCl2 + 2% gel @15.6 ppg; y = 1.15. Bumped plug. Circulated 9 bbls cement to pit.

Tubing Detail as of 02/01/08				
	5.00'	2,208.96'	67 jts 2-3/8", 4.7#, N-80, 8 rd Tubing	32.97'
3	2.213.95'	1.10'	2-3/8" Standard Seat Nipple	
2	2.215.05'	33.66'	2-3/8" Mud Anchor	
1	2,248.71'	2,248.71'	67 jts End of Tubing	

Niobrara Perforated Interval (01-15-08)
2,206' 2,236' 30'

4-1/2" Production Casing Landed at 2,362' (11-29-07)
57 jts (2,360.75') 4-1/2", 10.5#, J-55, STC
M&P 100 sx "Lite" + 0.24 pps Flo-Seal @12.2 ppg; y = 1.81 Lead and 75 sx "ASC" + 2% gel + 0.25 pps Flo-Seal @14.5 ppg; y = 1.57 Tail. Bumpnd plug. 17 bbls cement to pit.
Note: Centralizers on jts 1, 2, 3, 4, 5 & 6. Cement baskets on jts 6, 18 & 30 (11-29-07).