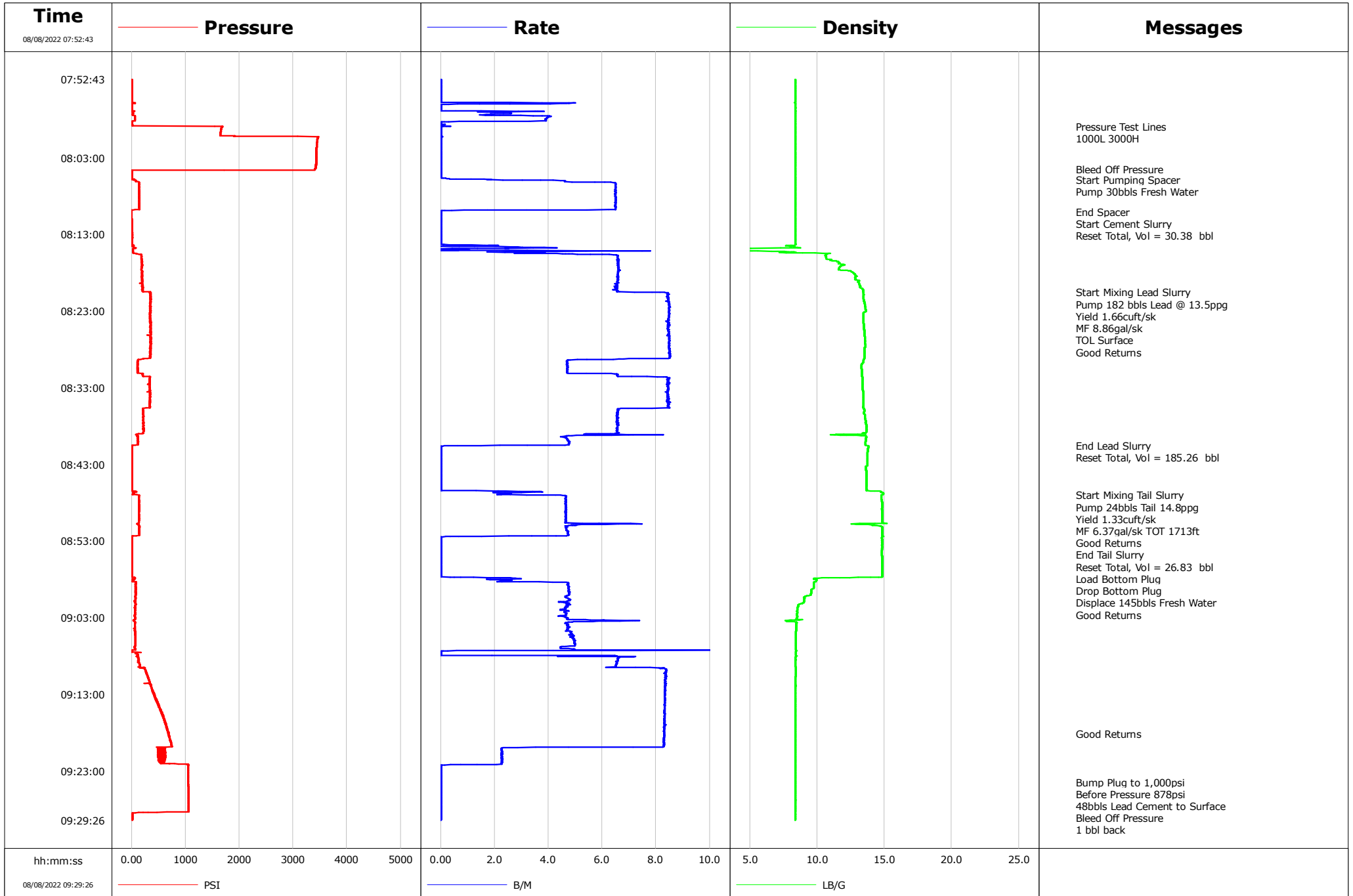


<b>Well</b>	Booth Federal DD06-775	<b>Client</b>	Chevron
<b>Field</b>	DJ	<b>SIR No.</b>	EOXO-00048
<b>Engineer</b>	Jay T. Fales	<b>Job Type</b>	Surface
<b>Country</b>	United States	<b>Job Date</b>	08-08-2022



				Customer			Job Number		
				Chevron			EOXO-00048		
Well		Location (legal)			Schlumberger Location			Job Start	
Booth Federal DD06-775					Matt Cleveland			Aug/08/2022	
Field		Formation Name/Type			Deviation		Bit Size		Well MD
DJ					deg		13.5 in		1962.0 ft
County		State/Province			BHP		BHST		BHCT
Weld		Wyoming			psi		115 degF		91 degF
Well Master		API/UWI							Pore Press. Gradient
0065874852		05-123-49298							lb/gal
Rig Name		Drilled For		Service Via		Casing/Liner			
Patterson 268		Oil & Gas		Land					
						Depth, ft		Size, in	Weight, lb/ft
						1951.0		9.6	36.0
Offshore Zone		Well Class		Well Type		109.0		16.0	36.94
		New		Development				J55	A-52A
Drilling Fluid Type		Max. Density		Plastic Viscosity		Tubing/Drill Pipe			
		lb/gal		cP					
						T/D		Depth, ft	Size, in
									Weight, lb/ft
									Grade
									Thread
Service Line		Job Type			Perforations/Open Hole				
Cementing		Surface							
Max. Allowed Tub. Press		Max. Allowed Ann. Press		WH Connection		Top, ft		Bottom, ft	shot/ft
psi		psi		Single Cement head		ft		ft	No. of Shots
									Total Interval
									ft
									Diameter
									in
						Treat Down		Displacement	
								145.0 bbl	
						Packer Type		Packer Depth	
								ft	
						Tubing Vol.		Casing Vol.	
						bbl		148.6 bbl	
						Annular Vol.		Openhole Vol.	
						189.7 bbl		161.3 bbl	
Casing/Tubing Secured		1 Hole Vol. Circulated prior to Cement		Casing Tools			Squeeze Job		
<input type="checkbox"/>		<input type="checkbox"/>							
Lift Pressure		951 psi			Shoe Type		Guide		Squeeze Type
Pipe Rotated		Pipe Reciprocated		Shoe Depth		1951.0 ft		Tool Type	
<input type="checkbox"/>		<input type="checkbox"/>							
No. Centralizers		Top Plugs		Bottom Plugs		Stage Tool Type		Tool Depth	
		1						ft	
Cement Head Type		Single			Stage Tool Depth		ft		Tail Pipe Size
									in
Job Scheduled For		Arrived on Location		Leave Location		Collar Type		Tail Pipe Depth	
Aug/08/2022 04:00		Aug/08/2022 03:45		Aug/08/2022 10:00		Float		ft	
						Collar Depth		Sqz. Total Vol.	
						1908.0 ft		bbl	
Date	Time 24-hr clock	Treating Pressure PSI	Flow Rate B/M	Density LB/G	Volume BBL	Message			
08/08/2022	07:52:43	3	0.0	8.39	0.0	Started Acquisition			
08/08/2022	07:53:33	4	0.0	8.39	0.0				
08/08/2022	07:54:23	4	0.0	8.39	0.0				
08/08/2022	07:55:13	1	0.0	8.39	0.0				
08/08/2022	07:56:03	6	0.0	8.39	0.9				
08/08/2022	07:56:53	60	2.9	8.39	1.0				
08/08/2022	07:57:43	58	4.0	8.39	3.3				
08/08/2022	07:58:33	6	0.0	8.39	5.2				
08/08/2022	07:58:51	1686	0.3	8.39	5.3	Pressure Test Lines			
08/08/2022	07:59:11	1663	0.0	8.39	5.3	1000L 3000H			
08/08/2022	07:59:23	1656	0.0	8.39	5.3				
08/08/2022	08:00:13	3468	0.1	8.39	5.3				
08/08/2022	08:01:03	3439	0.0	8.39	5.3				
08/08/2022	08:01:53	3430	0.0	8.39	5.3				
08/08/2022	08:02:43	3426	0.0	8.39	5.3				
08/08/2022	08:03:33	3424	0.0	8.39	5.3				
08/08/2022	08:04:23	3405	0.0	8.39	5.3				
08/08/2022	08:04:28	3402	0.0	8.39	5.3	Bleed Off Pressure			
08/08/2022	08:05:13	6	0.0	8.39	5.3				
08/08/2022	08:05:48	11	1.9	8.39	5.4	Start Pumping Spacer			
08/08/2022	08:06:03	78	4.6	8.39	6.3				

Well Booth Federal DD06-775			Field DJ		Job Start Aug/08/2022	Customer Chevron		Job Number EOXO-00048
Date	Time 24-hr clock	Treating Pressure PSI	Flow Rate B/M	Density LB/G	Volume BBL	Message		
08/08/2022	08:06:53	136	6.5	8.39	11.5			
08/08/2022	08:07:43	146	6.5	8.39	16.9			
08/08/2022	08:08:33	141	6.5	8.39	22.3			
08/08/2022	08:09:23	143	6.5	8.39	27.7			
08/08/2022	08:09:59	-7	0.0	8.39	30.4	End Spacer		
08/08/2022	08:10:03	-7	0.0	8.39	30.4	Start Cement Slurry		
08/08/2022	08:10:10	-6	0.0	8.39	30.4	Reset Total, Vol = 30.38 bbl		
08/08/2022	08:10:13	-6	0.0	8.39	30.4			
08/08/2022	08:11:03	1	0.0	8.39	30.4			
08/08/2022	08:11:53	8	0.0	8.39	30.4			
08/08/2022	08:12:43	9	0.0	8.39	30.4			
08/08/2022	08:13:33	9	0.0	8.39	30.4			
08/08/2022	08:14:23	46	1.6	8.32	30.5			
08/08/2022	08:15:13	21	2.6	7.55	32.2			
08/08/2022	08:16:03	183	6.6	10.67	36.5			
08/08/2022	08:16:53	195	6.6	11.92	42.0			
08/08/2022	08:17:43	195	6.6	12.42	47.5			
08/08/2022	08:18:33	189	6.6	12.81	53.0			
08/08/2022	08:19:23	150	6.5	13.11	58.5			
08/08/2022	08:20:13	203	6.5	13.42	63.9			
08/08/2022	08:20:32	350	8.2	13.43	66.1	Start Mixing Lead Slurry		
08/08/2022	08:20:48	348	8.5	13.45	68.3	Pump 182 bbls Lead @ 13.5ppg		
08/08/2022	08:21:03	358	8.4	13.45	70.4			
08/08/2022	08:21:07	362	8.4	13.45	71.0	Yield 1.66cuft/sk		
08/08/2022	08:21:46	361	8.5	13.49	76.5	MF 8.86gal/sk		
08/08/2022	08:21:53	344	8.5	13.51	77.4			
08/08/2022	08:21:54	344	8.5	13.51	77.6	TOL Surface		
08/08/2022	08:22:43	343	8.5	13.59	84.5			
08/08/2022	08:23:33	345	8.5	13.44	91.6			
08/08/2022	08:24:23	340	8.4	13.43	98.6			
08/08/2022	08:25:13	358	8.4	13.48	105.7			
08/08/2022	08:25:16	364	8.4	13.48	106.1	Good Returns		
08/08/2022	08:26:03	365	8.5	13.51	112.7			
08/08/2022	08:26:53	348	8.5	13.56	119.8			
08/08/2022	08:27:43	368	8.5	13.56	126.9			
08/08/2022	08:28:33	358	8.5	13.52	133.9			
08/08/2022	08:29:23	118	4.7	13.44	140.5			
08/08/2022	08:30:13	108	4.7	13.29	144.4			
08/08/2022	08:31:03	121	4.7	13.33	148.3			
08/08/2022	08:31:53	336	8.4	13.35	154.3			
08/08/2022	08:32:43	336	8.4	13.35	161.4			
08/08/2022	08:33:33	341	8.4	13.43	168.4			
08/08/2022	08:34:23	341	8.5	13.43	175.4			
08/08/2022	08:35:13	338	8.4	13.43	182.5			
08/08/2022	08:36:03	217	6.6	13.50	188.8			
08/08/2022	08:36:53	212	6.6	13.55	194.3			
08/08/2022	08:38:33	218	6.6	13.67	205.2			
08/08/2022	08:39:23	113	4.5	13.65	210.3			
08/08/2022	08:40:13	119	4.8	13.59	214.2			
08/08/2022	08:40:32	9	1.5	13.71	215.6	End Lead Slurry		
08/08/2022	08:40:35	3	0.1	13.80	215.6	Reset Total, Vol = 185.26 bbl		
08/08/2022	08:41:03	3	0.0	13.77	215.6			
08/08/2022	08:41:53	3	0.0	13.73	215.6			
08/08/2022	08:42:43	3	0.0	13.72	215.6			

Well Booth Federal DD06-775			Field DJ		Job Start Aug/08/2022	Customer Chevron	Job Number EOXO-00048
Date	Time 24-hr clock	Treating Pressure PSI	Flow Rate B/M	Density LB/G	Volume BBL	Message	
08/08/2022	08:44:23	3	0.0	13.65	215.6		
08/08/2022	08:45:13	2	0.0	13.66	215.7		
08/08/2022	08:46:03	3	0.0	13.67	215.7		
08/08/2022	08:46:53	62	2.2	14.89	216.9		
08/08/2022	08:46:58	138	3.2	14.81	217.1	Start Mixing Tail Slurry	
08/08/2022	08:47:17	135	4.6	14.75	218.5	Pump 24bbls Tail 14.8ppg	
08/08/2022	08:47:43	139	4.6	14.80	220.5		
08/08/2022	08:47:47	134	4.6	14.81	220.8	Yield 1.33cuft/sk	
08/08/2022	08:48:33	137	4.6	14.82	224.4		
08/08/2022	08:48:58	136	4.6	14.82	226.3	MF 6.37gal/sk TOT 1713ft	
08/08/2022	08:49:08	137	4.6	14.82	227.1	Good Returns	
08/08/2022	08:49:23	135	4.6	14.82	228.3		
08/08/2022	08:50:13	139	4.6	14.82	232.1		
08/08/2022	08:51:03	140	4.7	14.70	236.3		
08/08/2022	08:51:53	140	4.7	14.82	240.2		
08/08/2022	08:52:23	2	0.7	14.91	242.5	End Tail Slurry	
08/08/2022	08:52:26	0	0.1	14.87	242.5	Reset Total, Vol = 26.83 bbl	
08/08/2022	08:52:38	1	0.0	14.81	242.5	Load Bottom Plug	
08/08/2022	08:52:43	1	0.0	14.82	242.5		
08/08/2022	08:53:33	5	0.0	14.81	242.5		
08/08/2022	08:54:23	5	0.0	14.81	242.5		
08/08/2022	08:55:13	5	0.0	14.82	242.5		
08/08/2022	08:56:03	5	0.0	14.83	242.5		
08/08/2022	08:56:53	5	0.0	14.83	242.5		
08/08/2022	08:57:43	13	0.5	14.56	242.5		
08/08/2022	08:58:13	34	2.2	9.92	243.7	Drop Bottom Plug	
08/08/2022	08:58:29	74	4.7	9.73	244.6	Displace 145bbls Fresh Water	
08/08/2022	08:58:33	75	4.7	9.73	245.0		
08/08/2022	08:59:23	77	4.8	9.55	248.9		
08/08/2022	09:00:13	68	4.6	9.13	252.9		
08/08/2022	09:01:03	69	4.7	9.00	256.8		
08/08/2022	09:01:07	69	4.7	8.89	257.1	Good Returns	
08/08/2022	09:01:53	68	4.6	8.53	260.7		
08/08/2022	09:02:43	59	4.6	8.49	264.5		
08/08/2022	09:03:33	59	4.9	8.42	268.8		
08/08/2022	09:04:23	60	4.7	8.44	272.7		
08/08/2022	09:05:13	62	4.9	8.42	276.7		
08/08/2022	09:06:03	70	5.0	8.41	280.8		
08/08/2022	09:07:43	90	0.0	8.41	287.0		
08/08/2022	09:08:33	128	6.6	8.39	291.0		
08/08/2022	09:09:23	156	6.5	8.39	296.4		
08/08/2022	09:10:13	275	8.4	8.40	303.1		
08/08/2022	09:11:03	314	8.3	8.39	310.1		
08/08/2022	09:11:53	357	8.3	8.40	317.0		
08/08/2022	09:12:43	406	8.3	8.39	324.0		
08/08/2022	09:13:33	437	8.3	8.39	330.9		
08/08/2022	09:14:23	504	8.3	8.39	337.8		
08/08/2022	09:15:13	546	8.3	8.39	344.7		
08/08/2022	09:16:03	607	8.3	8.39	351.7		
08/08/2022	09:16:53	626	8.3	8.39	358.6		
08/08/2022	09:17:43	670	8.3	8.39	365.5		
08/08/2022	09:18:09	692	8.3	8.39	369.1	Good Returns	
08/08/2022	09:18:33	695	8.3	8.39	372.4		
08/08/2022	09:19:23	738	8.3	8.39	379.3		

Well		Field		Job Start		Customer		Job Number	
Booth Federal DD06-775		DJ		Aug/08/2022		Chevron		EOXO-00048	
Date	Time 24-hr clock	Treating Pressure PSI	Flow Rate B/M	Density LB/G	Volume BBL	Message			
08/08/2022	09:21:03	579	2.3	8.39	386.4				
08/08/2022	09:21:53	561	2.3	8.39	388.2				
08/08/2022	09:22:43	1049	0.0	8.39	388.9				
08/08/2022	09:23:33	1049	0.0	8.39	388.9				
08/08/2022	09:24:23	1051	0.0	8.39	388.9				
08/08/2022	09:24:29	1051	0.0	8.39	388.9	Bump Plug to 1,000psi			
08/08/2022	09:24:42	1051	0.0	8.39	388.9	Before Pressure 878psi			
08/08/2022	09:25:03	1052	0.0	8.39	388.9	48bbls Lead Cement to Surface			
08/08/2022	09:25:13	1053	0.0	8.39	388.9				
08/08/2022	09:26:03	1054	0.0	8.39	388.9				
08/08/2022	09:26:53	1056	0.0	8.39	388.9				
08/08/2022	09:27:43	1057	0.0	8.39	388.9				
08/08/2022	09:28:13	1059	0.0	8.39	388.9	Bleed Off Pressure			
08/08/2022	09:28:33	10	0.0	8.39	388.9				
08/08/2022	09:28:50	12	0.0	8.39	388.9	1 bbl back			
08/08/2022	09:28:55	12	0.0	8.39	388.9	End Job			

### Post Job Summary

Average Pump Rates, bbl/min				Volume of Fluid Injected, bbl			
Slurry	N2	Mud	Maximum Rate	Total Slurry	Mud	Spacer	N2
5.4			10.9	388.9	0.0	30.4	
Treating Pressure Summary, psi				Breakdown Fluid			
Maximum	Final	Average	Bump Plug to	Breakdown	Type	Volume	Density
3471	11	414				bbl	lb/gal
Avg. N2 Percent	Designed Slurry Volume		Displacement	Mix Water Temp	Cement Circulated to Surface?	Volume	
%	0.0 bbl		0.0 bbl	70 degF	<input checked="" type="checkbox"/>	48.0 bbl	
				Washed Thru Perfs		To	
						ft	
Customer or Authorized Representative			Schlumberger Supervisor			Circulation Lost	Job Completed
Dave Nielsen			Jay T. Fales			<input type="checkbox"/>	<input checked="" type="checkbox"/>
						-	