



# Edge Energy, LLC

Well Name:

**Simpson 36-9H**

Project Name:

**Sec. 26-T8N-R66W**

Pad Name:

**SIMPSON 26 PAD**

**ANNOTATIONS**

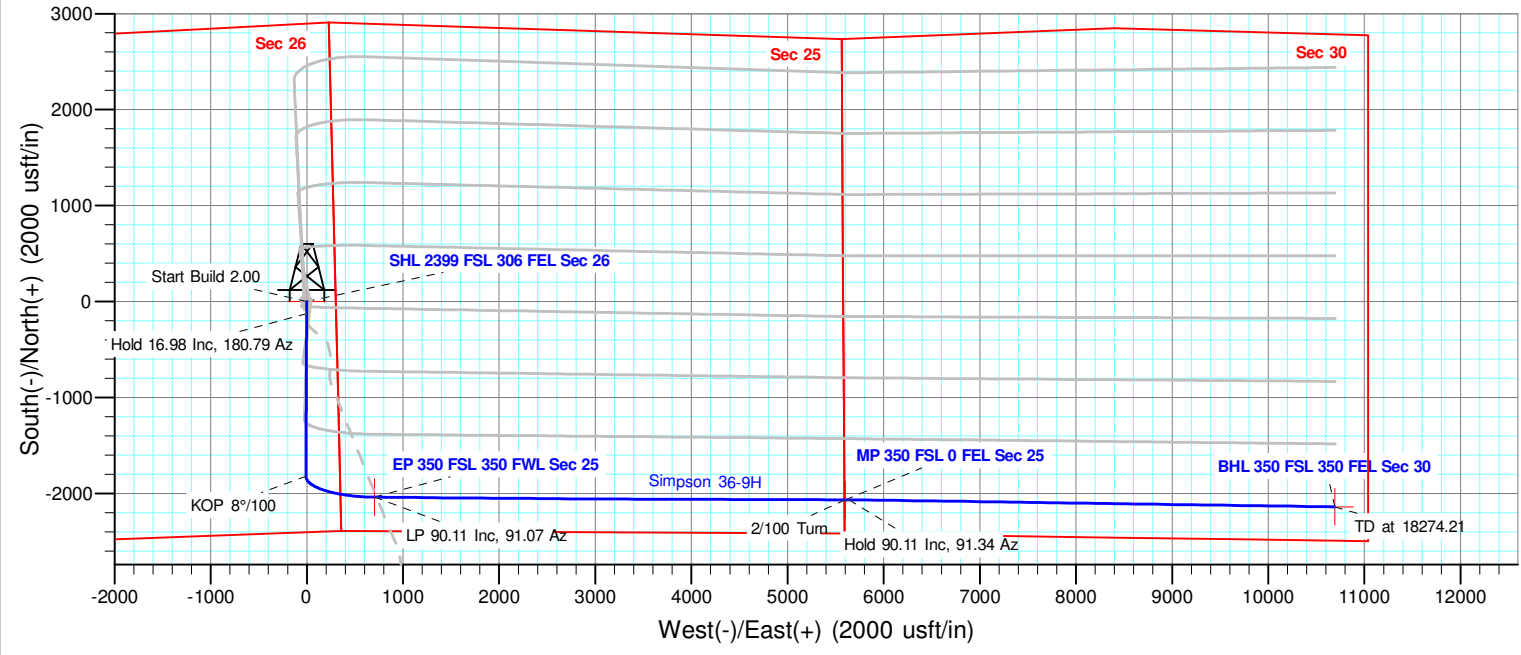
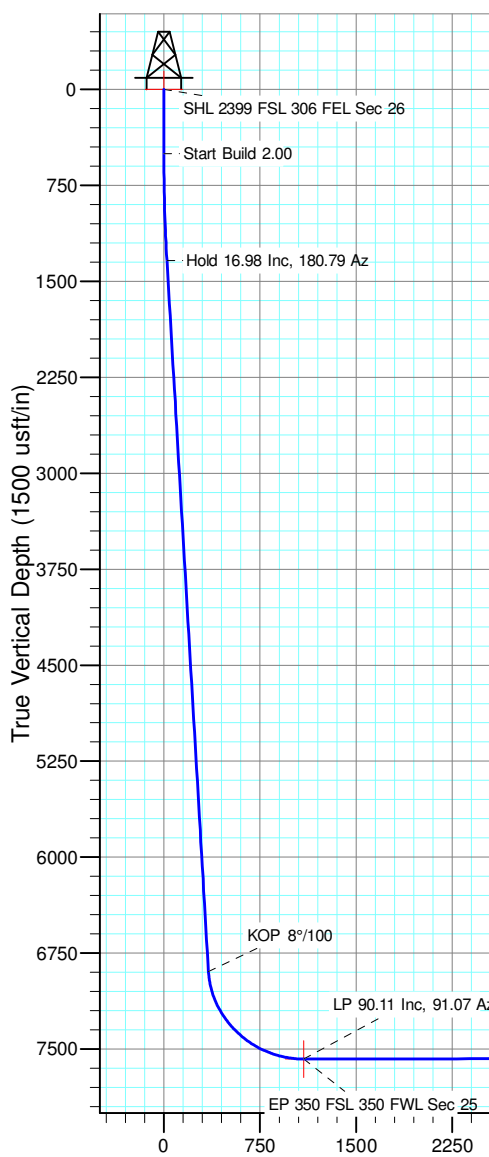
MD	Inc	Azi	TVD	+N/-S	+E/-W	VSec	Departure	Annotation
500.00	0.00	0.00	500.00	0.00	0.00	0.00	0.00	Start Build 2.00
1348.77	16.98	180.30	1336.41	-124.82	-0.65	23.84	124.82	Hold 16.98 Inc, 180.79 Az
7159.66	16.98	180.30	6894.12	-1821.34	-9.44	347.93	1821.36	KOP 8°/100
8285.00	90.11	90.58	7578.00	-2037.78	705.98	1091.91	2605.16	LP 90.11 Inc, 91.07 Az
13179.21	90.11	90.04	7568.20	-2064.21	5600.09	5896.16	7499.36	2/100 Turn
13219.39	90.11	90.84	7568.12	-2064.52	5640.27	5935.63	7539.55	Hold 90.11 Inc, 91.34 Az
18274.21	90.11	90.84	7558.00	-2138.86	10694.53	10906.31	12594.35	TD at 18274.21

**Geodetic Datum:**

North American Datum 1983  
US State Plane 1983, Colorado Northern Zone

**Elevation:**

Ground Elevation: 5013.00  
KB Elevation: WELL @ 5029.00usft (Original Well Elev)



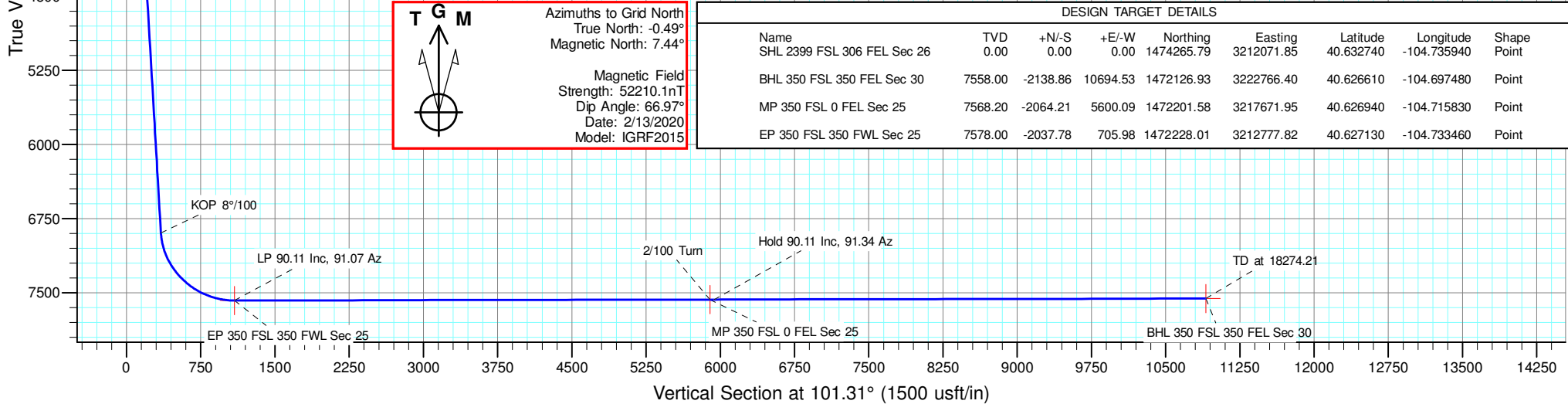
**T G M**

Azimuths to Grid North  
True North: -0.49°  
Magnetic North: 7.44°

Magnetic Field  
Strength: 52210.1nT  
Dip Angle: 66.97°  
Date: 2/13/2020  
Model: IGRF2015

**DESIGN TARGET DETAILS**

Name	TVD	+N/-S	+E/-W	Northing	Easting	Latitude	Longitude	Shape
SHL 2399 FSL 306 FEL Sec 26	0.00	0.00	0.00	1474265.79	3212071.85	40.632740	-104.735940	Point
BHL 350 FSL 350 FEL Sec 30	7558.00	-2138.86	10694.53	1472126.93	3222766.40	40.626610	-104.697480	Point
MP 350 FSL 0 FEL Sec 25	7568.20	-2064.21	5600.09	1472201.58	3217671.95	40.626940	-104.715830	Point
EP 350 FSL 350 FWL Sec 25	7578.00	-2037.78	705.98	1472228.01	3212777.82	40.627130	-104.733460	Point





## **Edge Energy, LLC**

**Sec. 26-T8N-R66W  
SIMPSON 26 PAD  
Simpson 36-9H**

**Wellbore #1**

**Plan: Plan #2**

## **Standard Planning Report - Geographic**

**03 June, 2022**



<b>Database:</b>	EDM 5000.15 Single User Db	<b>Local Co-ordinate Reference:</b>	Well Simpson 36-9H
<b>Company:</b>	Edge Energy, LLC	<b>TVD Reference:</b>	WELL @ 5029.00usft (Original Well Elev)
<b>Project:</b>	Sec. 26-T8N-R66W	<b>MD Reference:</b>	WELL @ 5029.00usft (Original Well Elev)
<b>Site:</b>	SIMPSON 26 PAD	<b>North Reference:</b>	Grid
<b>Well:</b>	Simpson 36-9H	<b>Survey Calculation Method:</b>	Minimum Curvature
<b>Wellbore:</b>	Wellbore #1		
<b>Design:</b>	Plan #2		

<b>Project</b>	Sec. 26-T8N-R66W		
<b>Map System:</b>	US State Plane 1983	<b>System Datum:</b>	Mean Sea Level
<b>Geo Datum:</b>	North American Datum 1983		
<b>Map Zone:</b>	Colorado Northern Zone		

<b>Site</b>	SIMPSON 26 PAD				
<b>Site Position:</b>		<b>Northing:</b>	1,474,309.18 ft	<b>Latitude:</b>	40.632860
<b>From:</b>	Lat/Long	<b>Easting:</b>	3,212,029.84 ft	<b>Longitude:</b>	-104.736090
<b>Position Uncertainty:</b>	0.00 usft	<b>Slot Radius:</b>	13-3/16 "	<b>Grid Convergence:</b>	0.49 °

<b>Well</b>	Simpson 36-9H					
<b>Well Position</b>	<b>+N/-S</b>	0.00 usft	<b>Northing:</b>	1,474,265.80 ft	<b>Latitude:</b>	40.632740
	<b>+E/-W</b>	0.00 usft	<b>Easting:</b>	3,212,071.85 ft	<b>Longitude:</b>	-104.735940
<b>Position Uncertainty</b>		0.00 usft	<b>Wellhead Elevation:</b>		<b>Ground Level:</b>	5,013.00 usft

<b>Wellbore</b>	Wellbore #1				
<b>Magnetics</b>	<b>Model Name</b>	<b>Sample Date</b>	<b>Declination (°)</b>	<b>Dip Angle (°)</b>	<b>Field Strength (nT)</b>
	IGRF2015	2/13/2020	7.93	66.97	52,210.11567241

<b>Design</b>	Plan #2			
<b>Audit Notes:</b>				
<b>Version:</b>	<b>Phase:</b>	PLAN	<b>Tie On Depth:</b>	0.00
<b>Vertical Section:</b>	<b>Depth From (TVD) (usft)</b>	<b>+N/-S (usft)</b>	<b>+E/-W (usft)</b>	<b>Direction (°)</b>
	0.00	0.00	0.00	101.31

<b>Plan Survey Tool Program</b>	<b>Date</b>	6/2/2022		
<b>Depth From (usft)</b>	<b>Depth To (usft)</b>	<b>Survey (Wellbore)</b>	<b>Tool Name</b>	<b>Remarks</b>
1	0.00	18,274.21 Plan #2 (Wellbore #1)	MWD	OWSG MWD - Standard

<b>Plan Sections</b>										
<b>Measured Depth (usft)</b>	<b>Inclination (°)</b>	<b>Azimuth (°)</b>	<b>Vertical Depth (usft)</b>	<b>+N/-S (usft)</b>	<b>+E/-W (usft)</b>	<b>Dogleg Rate (°/100usft)</b>	<b>Build Rate (°/100usft)</b>	<b>Turn Rate (°/100usft)</b>	<b>TFO (°)</b>	<b>Target</b>
0.00	0.00	0.00	0.00	0.00	0.00	0.00	0.00	0.00	0.00	
500.00	0.00	0.00	500.00	0.00	0.00	0.00	0.00	0.00	0.00	
1,348.76	16.98	180.30	1,336.40	-124.82	-0.65	2.00	2.00	0.00	180.30	
7,159.66	16.98	180.30	6,894.12	-1,821.34	-9.44	0.00	0.00	0.00	0.00	
8,285.00	90.11	90.58	7,578.00	-2,037.78	705.98	8.00	6.50	-7.97	-89.70	EP 350 FSL 350 FWL
13,179.21	90.11	90.04	7,568.20	-2,064.21	5,600.09	0.01	0.00	-0.01	-90.00	MP 350 FSL 0 FEL Se
13,219.39	90.11	90.84	7,568.12	-2,064.52	5,640.27	2.00	0.00	2.00	90.00	
18,274.21	90.11	90.84	7,558.00	-2,138.86	10,694.53	0.00	0.00	0.00	0.00	BHL 350 FSL 350 FEI



<b>Database:</b>	EDM 5000.15 Single User Db	<b>Local Co-ordinate Reference:</b>	Well Simpson 36-9H
<b>Company:</b>	Edge Energy, LLC	<b>TVD Reference:</b>	WELL @ 5029.00usft (Original Well Elev)
<b>Project:</b>	Sec. 26-T8N-R66W	<b>MD Reference:</b>	WELL @ 5029.00usft (Original Well Elev)
<b>Site:</b>	SIMPSON 26 PAD	<b>North Reference:</b>	Grid
<b>Well:</b>	Simpson 36-9H	<b>Survey Calculation Method:</b>	Minimum Curvature
<b>Wellbore:</b>	Wellbore #1		
<b>Design:</b>	Plan #2		

Planned Survey										
Measured Depth (usft)	Inclination (°)	Azimuth (°)	Vertical Depth (usft)	+N/-S (usft)	+E/-W (usft)	Map Northing (ft)	Map Easting (ft)	Latitude	Longitude	
0.00	0.00	0.00	0.00	0.00	0.00	1,474,265.80	3,212,071.85	40.632740	-104.735940	
<b>SHL 2399 FSL 306 FEL Sec 26</b>										
100.00	0.00	0.00	100.00	0.00	0.00	1,474,265.80	3,212,071.85	40.632740	-104.735940	
200.00	0.00	0.00	200.00	0.00	0.00	1,474,265.80	3,212,071.85	40.632740	-104.735940	
300.00	0.00	0.00	300.00	0.00	0.00	1,474,265.80	3,212,071.85	40.632740	-104.735940	
400.00	0.00	0.00	400.00	0.00	0.00	1,474,265.80	3,212,071.85	40.632740	-104.735940	
500.00	0.00	0.00	500.00	0.00	0.00	1,474,265.80	3,212,071.85	40.632740	-104.735940	
<b>Start Build 2.00</b>										
600.00	2.00	180.30	599.98	-1.75	-0.01	1,474,264.05	3,212,071.84	40.632735	-104.735940	
700.00	4.00	180.30	699.84	-6.98	-0.04	1,474,258.82	3,212,071.81	40.632721	-104.735941	
800.00	6.00	180.30	799.45	-15.69	-0.08	1,474,250.10	3,212,071.77	40.632697	-104.735941	
900.00	8.00	180.30	898.70	-27.88	-0.14	1,474,237.92	3,212,071.70	40.632664	-104.735942	
1,000.00	10.00	180.30	997.47	-43.52	-0.23	1,474,222.28	3,212,071.62	40.632621	-104.735942	
1,100.00	12.00	180.30	1,095.62	-62.60	-0.32	1,474,203.20	3,212,071.52	40.632568	-104.735943	
1,200.00	14.00	180.30	1,193.06	-85.10	-0.44	1,474,180.70	3,212,071.41	40.632506	-104.735944	
1,300.00	16.00	180.30	1,289.64	-110.98	-0.58	1,474,154.82	3,212,071.27	40.632435	-104.735946	
1,348.76	16.98	180.30	1,336.40	-124.82	-0.65	1,474,140.98	3,212,071.20	40.632397	-104.735946	
1,348.77	16.98	180.30	1,336.41	-124.82	-0.65	1,474,140.98	3,212,071.20	40.632397	-104.735946	
<b>Hold 16.98 Inc, 180.79 Az</b>										
1,400.00	16.98	180.30	1,385.40	-139.77	-0.72	1,474,126.02	3,212,071.12	40.632356	-104.735947	
1,500.00	16.98	180.30	1,481.05	-168.97	-0.88	1,474,096.83	3,212,070.97	40.632276	-104.735949	
1,600.00	16.98	180.30	1,576.69	-198.16	-1.03	1,474,067.63	3,212,070.82	40.632196	-104.735950	
1,700.00	16.98	180.30	1,672.33	-227.36	-1.18	1,474,038.44	3,212,070.67	40.632116	-104.735952	
1,800.00	16.98	180.30	1,767.98	-256.56	-1.33	1,474,009.24	3,212,070.52	40.632036	-104.735953	
1,900.00	16.98	180.30	1,863.62	-285.75	-1.48	1,473,980.05	3,212,070.37	40.631956	-104.735954	
2,000.00	16.98	180.30	1,959.26	-314.95	-1.63	1,473,950.85	3,212,070.22	40.631876	-104.735956	
2,100.00	16.98	180.30	2,054.91	-344.14	-1.78	1,473,921.65	3,212,070.07	40.631795	-104.735957	
2,200.00	16.98	180.30	2,150.55	-373.34	-1.93	1,473,892.46	3,212,069.91	40.631715	-104.735959	
2,300.00	16.98	180.30	2,246.19	-402.53	-2.09	1,473,863.26	3,212,069.76	40.631635	-104.735960	
2,400.00	16.98	180.30	2,341.84	-431.73	-2.24	1,473,834.07	3,212,069.61	40.631555	-104.735962	
2,500.00	16.98	180.30	2,437.48	-460.92	-2.39	1,473,804.87	3,212,069.46	40.631475	-104.735963	
2,600.00	16.98	180.30	2,533.12	-490.12	-2.54	1,473,775.68	3,212,069.31	40.631395	-104.735965	
2,700.00	16.98	180.30	2,628.76	-519.32	-2.69	1,473,746.48	3,212,069.16	40.631315	-104.735966	
2,800.00	16.98	180.30	2,724.41	-548.51	-2.84	1,473,717.29	3,212,069.01	40.631235	-104.735968	
2,900.00	16.98	180.30	2,820.05	-577.71	-2.99	1,473,688.09	3,212,068.85	40.631154	-104.735969	
3,000.00	16.98	180.30	2,915.69	-606.90	-3.14	1,473,658.89	3,212,068.70	40.631074	-104.735970	
3,100.00	16.98	180.30	3,011.34	-636.10	-3.30	1,473,629.70	3,212,068.55	40.630994	-104.735972	
3,200.00	16.98	180.30	3,106.98	-665.29	-3.45	1,473,600.50	3,212,068.40	40.630914	-104.735973	
3,300.00	16.98	180.30	3,202.62	-694.49	-3.60	1,473,571.31	3,212,068.25	40.630834	-104.735975	
3,400.00	16.98	180.30	3,298.27	-723.68	-3.75	1,473,542.11	3,212,068.10	40.630754	-104.735976	
3,500.00	16.98	180.30	3,393.91	-752.88	-3.90	1,473,512.92	3,212,067.95	40.630674	-104.735978	
3,600.00	16.98	180.30	3,489.55	-782.08	-4.05	1,473,483.72	3,212,067.80	40.630594	-104.735979	
3,700.00	16.98	180.30	3,585.20	-811.27	-4.20	1,473,454.53	3,212,067.64	40.630513	-104.735981	
3,800.00	16.98	180.30	3,680.84	-840.47	-4.36	1,473,425.33	3,212,067.49	40.630433	-104.735982	
3,900.00	16.98	180.30	3,776.48	-869.66	-4.51	1,473,396.13	3,212,067.34	40.630353	-104.735983	
4,000.00	16.98	180.30	3,872.12	-898.86	-4.66	1,473,366.94	3,212,067.19	40.630273	-104.735985	
4,100.00	16.98	180.30	3,967.77	-928.05	-4.81	1,473,337.74	3,212,067.04	40.630193	-104.735986	
4,200.00	16.98	180.30	4,063.41	-957.25	-4.96	1,473,308.55	3,212,066.89	40.630113	-104.735988	
4,300.00	16.98	180.30	4,159.05	-986.44	-5.11	1,473,279.35	3,212,066.74	40.630033	-104.735989	
4,400.00	16.98	180.30	4,254.70	-1,015.64	-5.26	1,473,250.16	3,212,066.59	40.629952	-104.735991	
4,500.00	16.98	180.30	4,350.34	-1,044.84	-5.41	1,473,220.96	3,212,066.43	40.629872	-104.735992	
4,600.00	16.98	180.30	4,445.98	-1,074.03	-5.57	1,473,191.76	3,212,066.28	40.629792	-104.735994	
4,700.00	16.98	180.30	4,541.63	-1,103.23	-5.72	1,473,162.57	3,212,066.13	40.629712	-104.735995	
4,800.00	16.98	180.30	4,637.27	-1,132.42	-5.87	1,473,133.37	3,212,065.98	40.629632	-104.735997	



Planning Report - Geographic

<b>Database:</b>	EDM 5000.15 Single User Db	<b>Local Co-ordinate Reference:</b>	Well Simpson 36-9H
<b>Company:</b>	Edge Energy, LLC	<b>TVD Reference:</b>	WELL @ 5029.00usft (Original Well Elev)
<b>Project:</b>	Sec. 26-T8N-R66W	<b>MD Reference:</b>	WELL @ 5029.00usft (Original Well Elev)
<b>Site:</b>	SIMPSON 26 PAD	<b>North Reference:</b>	Grid
<b>Well:</b>	Simpson 36-9H	<b>Survey Calculation Method:</b>	Minimum Curvature
<b>Wellbore:</b>	Wellbore #1		
<b>Design:</b>	Plan #2		

Planned Survey									
Measured Depth (usft)	Inclination (°)	Azimuth (°)	Vertical Depth (usft)	+N/-S (usft)	+E/-W (usft)	Map Northing (ft)	Map Easting (ft)	Latitude	Longitude
4,900.00	16.98	180.30	4,732.91	-1,161.62	-6.02	1,473,104.18	3,212,065.83	40.629552	-104.735998
5,000.00	16.98	180.30	4,828.56	-1,190.81	-6.17	1,473,074.98	3,212,065.68	40.629472	-104.735999
5,100.00	16.98	180.30	4,924.20	-1,220.01	-6.32	1,473,045.79	3,212,065.53	40.629392	-104.736001
5,200.00	16.98	180.30	5,019.84	-1,249.20	-6.47	1,473,016.59	3,212,065.38	40.629311	-104.736002
5,300.00	16.98	180.30	5,115.48	-1,278.40	-6.62	1,472,987.40	3,212,065.22	40.629231	-104.736004
5,400.00	16.98	180.30	5,211.13	-1,307.60	-6.78	1,472,958.20	3,212,065.07	40.629151	-104.736005
5,500.00	16.98	180.30	5,306.77	-1,336.79	-6.93	1,472,929.00	3,212,064.92	40.629071	-104.736007
5,600.00	16.98	180.30	5,402.41	-1,365.99	-7.08	1,472,899.81	3,212,064.77	40.628991	-104.736008
5,700.00	16.98	180.30	5,498.06	-1,395.18	-7.23	1,472,870.61	3,212,064.62	40.628911	-104.736010
5,800.00	16.98	180.30	5,593.70	-1,424.38	-7.38	1,472,841.42	3,212,064.47	40.628831	-104.736011
5,900.00	16.98	180.30	5,689.34	-1,453.57	-7.53	1,472,812.22	3,212,064.32	40.628751	-104.736013
6,000.00	16.98	180.30	5,784.99	-1,482.77	-7.68	1,472,783.03	3,212,064.16	40.628670	-104.736014
6,100.00	16.98	180.30	5,880.63	-1,511.96	-7.83	1,472,753.83	3,212,064.01	40.628590	-104.736015
6,200.00	16.98	180.30	5,976.27	-1,541.16	-7.99	1,472,724.63	3,212,063.86	40.628510	-104.736017
6,300.00	16.98	180.30	6,071.92	-1,570.36	-8.14	1,472,695.44	3,212,063.71	40.628430	-104.736018
6,400.00	16.98	180.30	6,167.56	-1,599.55	-8.29	1,472,666.24	3,212,063.56	40.628350	-104.736020
6,500.00	16.98	180.30	6,263.20	-1,628.75	-8.44	1,472,637.05	3,212,063.41	40.628270	-104.736021
6,600.00	16.98	180.30	6,358.84	-1,657.94	-8.59	1,472,607.85	3,212,063.26	40.628190	-104.736023
6,700.00	16.98	180.30	6,454.49	-1,687.14	-8.74	1,472,578.66	3,212,063.11	40.628109	-104.736024
6,800.00	16.98	180.30	6,550.13	-1,716.33	-8.89	1,472,549.46	3,212,062.95	40.628029	-104.736026
6,900.00	16.98	180.30	6,645.77	-1,745.53	-9.05	1,472,520.27	3,212,062.80	40.627949	-104.736027
7,000.00	16.98	180.30	6,741.42	-1,774.72	-9.20	1,472,491.07	3,212,062.65	40.627869	-104.736028
7,100.00	16.98	180.30	6,837.06	-1,803.92	-9.35	1,472,461.87	3,212,062.50	40.627789	-104.736030
7,159.66	16.98	180.30	6,894.12	-1,821.34	-9.44	1,472,444.46	3,212,062.41	40.627741	-104.736031
<b>KOP 8°/100</b>									
7,200.00	17.29	169.38	6,932.68	-1,833.12	-8.36	1,472,432.67	3,212,063.49	40.627709	-104.736027
7,300.00	20.31	146.18	7,027.47	-1,862.19	4.06	1,472,403.60	3,212,075.91	40.627629	-104.735983
7,400.00	25.50	130.40	7,119.64	-1,890.61	30.15	1,472,375.19	3,212,102.00	40.627550	-104.735890
7,500.00	31.82	120.09	7,207.40	-1,917.82	69.42	1,472,347.98	3,212,141.27	40.627474	-104.735750
7,600.00	38.70	113.01	7,289.03	-1,943.29	121.09	1,472,322.50	3,212,192.94	40.627403	-104.735664
7,700.00	45.91	107.82	7,362.97	-1,966.54	184.16	1,472,299.25	3,212,256.01	40.627338	-104.735338
7,800.00	53.29	103.77	7,427.75	-1,987.10	257.40	1,472,278.69	3,212,329.24	40.627280	-104.735075
7,900.00	60.79	100.44	7,482.13	-2,004.58	339.38	1,472,261.21	3,212,411.23	40.627230	-104.734780
8,000.00	68.36	97.57	7,525.03	-2,018.64	428.52	1,472,247.16	3,212,500.36	40.627189	-104.734459
8,100.00	75.97	94.99	7,555.64	-2,029.00	523.07	1,472,236.80	3,212,594.91	40.627159	-104.734119
8,200.00	83.61	92.57	7,573.35	-2,035.46	621.19	1,472,230.34	3,212,693.04	40.627138	-104.733766
8,285.00	90.11	90.58	7,578.00	-2,037.78	705.98	1,472,228.01	3,212,777.83	40.627130	-104.733460
<b>LP 90.11 Inc, 91.07 Az - EP 350 FSL 350 FWL Sec 25</b>									
8,300.00	90.11	90.58	7,577.97	-2,037.94	720.98	1,472,227.86	3,212,792.83	40.627129	-104.733406
8,400.00	90.11	90.57	7,577.77	-2,038.93	820.97	1,472,226.86	3,212,892.82	40.627124	-104.733046
8,500.00	90.11	90.56	7,577.57	-2,039.92	920.97	1,472,225.88	3,212,992.82	40.627119	-104.732686
8,600.00	90.11	90.54	7,577.37	-2,040.88	1,020.96	1,472,224.92	3,213,092.82	40.627114	-104.732326
8,700.00	90.11	90.53	7,577.17	-2,041.82	1,120.96	1,472,223.98	3,213,192.81	40.627109	-104.731965
8,800.00	90.11	90.52	7,576.97	-2,042.74	1,220.96	1,472,223.05	3,213,292.81	40.627104	-104.731605
8,900.00	90.11	90.51	7,576.77	-2,043.64	1,320.95	1,472,222.15	3,213,392.80	40.627099	-104.731245
9,000.00	90.11	90.50	7,576.57	-2,044.53	1,420.95	1,472,221.27	3,213,492.80	40.627095	-104.730885
9,100.00	90.11	90.49	7,576.37	-2,045.39	1,520.94	1,472,220.40	3,213,592.79	40.627090	-104.730525
9,200.00	90.11	90.48	7,576.17	-2,046.24	1,620.94	1,472,219.56	3,213,692.79	40.627085	-104.730164
9,300.00	90.11	90.47	7,575.97	-2,047.06	1,720.94	1,472,218.73	3,213,792.79	40.627080	-104.729804
9,400.00	90.11	90.46	7,575.77	-2,047.87	1,820.93	1,472,217.93	3,213,892.78	40.627076	-104.729444
9,500.00	90.11	90.45	7,575.57	-2,048.66	1,920.93	1,472,217.14	3,213,992.78	40.627071	-104.729084
9,600.00	90.11	90.43	7,575.37	-2,049.42	2,020.93	1,472,216.37	3,214,092.78	40.627067	-104.728724
9,700.00	90.11	90.42	7,575.17	-2,050.17	2,120.92	1,472,215.62	3,214,192.78	40.627062	-104.728363
9,800.00	90.11	90.41	7,574.97	-2,050.90	2,220.92	1,472,214.89	3,214,292.77	40.627058	-104.728003



Planning Report - Geographic

<b>Database:</b>	EDM 5000.15 Single User Db	<b>Local Co-ordinate Reference:</b>	Well Simpson 36-9H
<b>Company:</b>	Edge Energy, LLC	<b>TVD Reference:</b>	WELL @ 5029.00usft (Original Well Elev)
<b>Project:</b>	Sec. 26-T8N-R66W	<b>MD Reference:</b>	WELL @ 5029.00usft (Original Well Elev)
<b>Site:</b>	SIMPSON 26 PAD	<b>North Reference:</b>	Grid
<b>Well:</b>	Simpson 36-9H	<b>Survey Calculation Method:</b>	Minimum Curvature
<b>Wellbore:</b>	Wellbore #1		
<b>Design:</b>	Plan #2		

Planned Survey										
Measured Depth (usft)	Inclination (°)	Azimuth (°)	Vertical Depth (usft)	+N/-S (usft)	+E/-W (usft)	Map Northing (ft)	Map Easting (ft)	Latitude	Longitude	
9,900.00	90.11	90.40	7,574.77	-2,051.61	2,320.92	1,472,214.18	3,214,392.77	40.627054	-104.727643	
10,000.00	90.11	90.39	7,574.57	-2,052.30	2,420.91	1,472,213.49	3,214,492.77	40.627049	-104.727283	
10,100.00	90.11	90.38	7,574.37	-2,052.97	2,520.91	1,472,212.82	3,214,592.77	40.627045	-104.726922	
10,200.00	90.11	90.37	7,574.17	-2,053.63	2,620.91	1,472,212.17	3,214,692.76	40.627041	-104.726562	
10,300.00	90.11	90.36	7,573.97	-2,054.26	2,720.91	1,472,211.53	3,214,792.76	40.627037	-104.726202	
10,400.00	90.11	90.35	7,573.77	-2,054.87	2,820.91	1,472,210.92	3,214,892.76	40.627033	-104.725842	
10,500.00	90.11	90.34	7,573.57	-2,055.47	2,920.90	1,472,210.33	3,214,992.76	40.627029	-104.725482	
10,600.00	90.11	90.32	7,573.37	-2,056.04	3,020.90	1,472,209.75	3,215,092.76	40.627025	-104.725121	
10,700.00	90.11	90.31	7,573.16	-2,056.60	3,120.90	1,472,209.20	3,215,192.76	40.627021	-104.724761	
10,800.00	90.11	90.30	7,572.96	-2,057.13	3,220.90	1,472,208.66	3,215,292.75	40.627017	-104.724401	
10,900.00	90.11	90.29	7,572.76	-2,057.65	3,320.90	1,472,208.14	3,215,392.75	40.627013	-104.724041	
11,000.00	90.11	90.28	7,572.56	-2,058.15	3,420.90	1,472,207.64	3,215,492.75	40.627009	-104.723681	
11,100.00	90.11	90.27	7,572.36	-2,058.63	3,520.89	1,472,207.17	3,215,592.75	40.627006	-104.723320	
11,200.00	90.11	90.26	7,572.16	-2,059.09	3,620.89	1,472,206.71	3,215,692.75	40.627002	-104.722960	
11,300.00	90.11	90.25	7,571.96	-2,059.53	3,720.89	1,472,206.27	3,215,792.75	40.626998	-104.722600	
11,400.00	90.11	90.24	7,571.76	-2,059.95	3,820.89	1,472,205.84	3,215,892.75	40.626995	-104.722240	
11,500.00	90.11	90.22	7,571.56	-2,060.35	3,920.89	1,472,205.44	3,215,992.75	40.626991	-104.721879	
11,600.00	90.11	90.21	7,571.36	-2,060.73	4,020.89	1,472,205.06	3,216,092.75	40.626988	-104.721519	
11,700.00	90.11	90.20	7,571.16	-2,061.10	4,120.89	1,472,204.70	3,216,192.74	40.626984	-104.721159	
11,800.00	90.11	90.19	7,570.96	-2,061.44	4,220.89	1,472,204.35	3,216,292.74	40.626981	-104.720799	
11,900.00	90.11	90.18	7,570.76	-2,061.76	4,320.89	1,472,204.03	3,216,392.74	40.626978	-104.720438	
12,000.00	90.11	90.17	7,570.56	-2,062.07	4,420.89	1,472,203.72	3,216,492.74	40.626975	-104.720078	
12,100.00	90.11	90.16	7,570.36	-2,062.35	4,520.89	1,472,203.44	3,216,592.74	40.626971	-104.719718	
12,200.00	90.11	90.15	7,570.16	-2,062.62	4,620.88	1,472,203.17	3,216,692.74	40.626968	-104.719358	
12,300.00	90.11	90.14	7,569.96	-2,062.87	4,720.88	1,472,202.92	3,216,792.74	40.626965	-104.718998	
12,400.00	90.11	90.13	7,569.76	-2,063.10	4,820.88	1,472,202.70	3,216,892.74	40.626962	-104.718637	
12,500.00	90.11	90.11	7,569.56	-2,063.31	4,920.88	1,472,202.49	3,216,992.74	40.626959	-104.718277	
12,600.00	90.11	90.10	7,569.36	-2,063.49	5,020.88	1,472,202.30	3,217,092.74	40.626956	-104.717917	
12,700.00	90.11	90.09	7,569.16	-2,063.67	5,120.88	1,472,202.13	3,217,192.74	40.626953	-104.717557	
12,800.00	90.11	90.08	7,568.96	-2,063.82	5,220.88	1,472,201.98	3,217,292.74	40.626950	-104.717196	
12,900.00	90.11	90.07	7,568.76	-2,063.95	5,320.88	1,472,201.85	3,217,392.74	40.626948	-104.716836	
13,000.00	90.11	90.06	7,568.56	-2,064.06	5,420.88	1,472,201.73	3,217,492.74	40.626945	-104.716476	
13,100.00	90.11	90.05	7,568.36	-2,064.15	5,520.88	1,472,201.64	3,217,592.74	40.626942	-104.716116	
13,179.21	90.11	90.04	7,568.20	-2,064.21	5,600.09	1,472,201.58	3,217,671.95	40.626940	-104.715830	
<b>2/100 Turn - MP 350 FSL 0 FEL Sec 25</b>										
13,200.00	90.11	90.45	7,568.16	-2,064.30	5,620.88	1,472,201.49	3,217,692.74	40.626939	-104.715755	
13,219.39	90.11	90.84	7,568.12	-2,064.52	5,640.27	1,472,201.27	3,217,712.13	40.626938	-104.715686	
<b>Hold 90.11 Inc, 91.34 Az</b>										
13,300.00	90.11	90.84	7,567.96	-2,065.71	5,720.87	1,472,200.09	3,217,792.73	40.626933	-104.715395	
13,400.00	90.11	90.84	7,567.76	-2,067.18	5,820.86	1,472,198.62	3,217,892.72	40.626927	-104.715035	
13,500.00	90.11	90.84	7,567.56	-2,068.65	5,920.85	1,472,197.14	3,217,992.71	40.626920	-104.714675	
13,600.00	90.11	90.84	7,567.36	-2,070.12	6,020.84	1,472,195.67	3,218,092.70	40.626914	-104.714315	
13,700.00	90.11	90.84	7,567.16	-2,071.59	6,120.83	1,472,194.20	3,218,192.69	40.626907	-104.713955	
13,800.00	90.11	90.84	7,566.96	-2,073.06	6,220.82	1,472,192.73	3,218,292.68	40.626901	-104.713594	
13,900.00	90.11	90.84	7,566.76	-2,074.53	6,320.80	1,472,191.26	3,218,392.67	40.626894	-104.713234	
14,000.00	90.11	90.84	7,566.56	-2,076.00	6,420.79	1,472,189.79	3,218,492.66	40.626888	-104.712874	
14,100.00	90.11	90.84	7,566.36	-2,077.47	6,520.78	1,472,188.32	3,218,592.64	40.626881	-104.712514	
14,200.00	90.11	90.84	7,566.16	-2,078.94	6,620.77	1,472,186.85	3,218,692.63	40.626875	-104.712154	
14,300.00	90.11	90.84	7,565.96	-2,080.41	6,720.76	1,472,185.38	3,218,792.62	40.626868	-104.711794	
14,400.00	90.11	90.84	7,565.76	-2,081.89	6,820.75	1,472,183.91	3,218,892.61	40.626862	-104.711433	
14,500.00	90.11	90.84	7,565.56	-2,083.36	6,920.74	1,472,182.44	3,218,992.60	40.626855	-104.711073	
14,600.00	90.11	90.84	7,565.36	-2,084.83	7,020.73	1,472,180.97	3,219,092.59	40.626849	-104.710713	
14,700.00	90.11	90.84	7,565.16	-2,086.30	7,120.72	1,472,179.50	3,219,192.58	40.626842	-104.710353	
14,800.00	90.11	90.84	7,564.96	-2,087.77	7,220.71	1,472,178.03	3,219,292.57	40.626836	-104.709993	



Planning Report - Geographic

<b>Database:</b>	EDM 5000.15 Single User Db	<b>Local Co-ordinate Reference:</b>	Well Simpson 36-9H
<b>Company:</b>	Edge Energy, LLC	<b>TVD Reference:</b>	WELL @ 5029.00usft (Original Well Elev)
<b>Project:</b>	Sec. 26-T8N-R66W	<b>MD Reference:</b>	WELL @ 5029.00usft (Original Well Elev)
<b>Site:</b>	SIMPSON 26 PAD	<b>North Reference:</b>	Grid
<b>Well:</b>	Simpson 36-9H	<b>Survey Calculation Method:</b>	Minimum Curvature
<b>Wellbore:</b>	Wellbore #1		
<b>Design:</b>	Plan #2		

Planned Survey										
Measured Depth (usft)	Inclination (°)	Azimuth (°)	Vertical Depth (usft)	+N/-S (usft)	+E/-W (usft)	Map Northing (ft)	Map Easting (ft)	Latitude	Longitude	
14,900.00	90.11	90.84	7,564.76	-2,089.24	7,320.69	1,472,176.55	3,219,392.56	40.626829	-104.709633	
15,000.00	90.11	90.84	7,564.56	-2,090.71	7,420.68	1,472,175.08	3,219,492.55	40.626823	-104.709273	
15,100.00	90.11	90.84	7,564.36	-2,092.18	7,520.67	1,472,173.61	3,219,592.54	40.626817	-104.708912	
15,200.00	90.11	90.84	7,564.16	-2,093.65	7,620.66	1,472,172.14	3,219,692.53	40.626810	-104.708552	
15,300.00	90.11	90.84	7,563.95	-2,095.12	7,720.65	1,472,170.67	3,219,792.51	40.626804	-104.708192	
15,400.00	90.11	90.84	7,563.75	-2,096.59	7,820.64	1,472,169.20	3,219,892.50	40.626797	-104.707832	
15,500.00	90.11	90.84	7,563.55	-2,098.06	7,920.63	1,472,167.73	3,219,992.49	40.626791	-104.707472	
15,600.00	90.11	90.84	7,563.35	-2,099.53	8,020.62	1,472,166.26	3,220,092.48	40.626784	-104.707112	
15,700.00	90.11	90.84	7,563.15	-2,101.00	8,120.61	1,472,164.79	3,220,192.47	40.626778	-104.706751	
15,800.00	90.11	90.84	7,562.95	-2,102.47	8,220.60	1,472,163.32	3,220,292.46	40.626771	-104.706391	
15,900.00	90.11	90.84	7,562.75	-2,103.95	8,320.58	1,472,161.85	3,220,392.45	40.626765	-104.706031	
16,000.00	90.11	90.84	7,562.55	-2,105.42	8,420.57	1,472,160.38	3,220,492.44	40.626758	-104.705671	
16,100.00	90.11	90.84	7,562.35	-2,106.89	8,520.56	1,472,158.91	3,220,592.43	40.626752	-104.705311	
16,200.00	90.11	90.84	7,562.15	-2,108.36	8,620.55	1,472,157.44	3,220,692.42	40.626745	-104.704951	
16,300.00	90.11	90.84	7,561.95	-2,109.83	8,720.54	1,472,155.97	3,220,792.41	40.626739	-104.704590	
16,400.00	90.11	90.84	7,561.75	-2,111.30	8,820.53	1,472,154.49	3,220,892.40	40.626732	-104.704230	
16,500.00	90.11	90.84	7,561.55	-2,112.77	8,920.52	1,472,153.02	3,220,992.38	40.626726	-104.703870	
16,600.00	90.11	90.84	7,561.35	-2,114.24	9,020.51	1,472,151.55	3,221,092.37	40.626719	-104.703510	
16,700.00	90.11	90.84	7,561.15	-2,115.71	9,120.50	1,472,150.08	3,221,192.36	40.626713	-104.703150	
16,800.00	90.11	90.84	7,560.95	-2,117.18	9,220.49	1,472,148.61	3,221,292.35	40.626706	-104.702790	
16,900.00	90.11	90.84	7,560.75	-2,118.65	9,320.47	1,472,147.14	3,221,392.34	40.626700	-104.702430	
17,000.00	90.11	90.84	7,560.55	-2,120.12	9,420.46	1,472,145.67	3,221,492.33	40.626693	-104.702069	
17,100.00	90.11	90.84	7,560.35	-2,121.59	9,520.45	1,472,144.20	3,221,592.32	40.626687	-104.701709	
17,200.00	90.11	90.84	7,560.15	-2,123.06	9,620.44	1,472,142.73	3,221,692.31	40.626680	-104.701349	
17,300.00	90.11	90.84	7,559.95	-2,124.54	9,720.43	1,472,141.26	3,221,792.30	40.626674	-104.700989	
17,400.00	90.11	90.84	7,559.75	-2,126.01	9,820.42	1,472,139.79	3,221,892.29	40.626667	-104.700629	
17,500.00	90.11	90.84	7,559.55	-2,127.48	9,920.41	1,472,138.32	3,221,992.28	40.626661	-104.700269	
17,600.00	90.11	90.84	7,559.35	-2,128.95	10,020.40	1,472,136.85	3,222,092.27	40.626654	-104.699908	
17,700.00	90.11	90.84	7,559.15	-2,130.42	10,120.39	1,472,135.38	3,222,192.26	40.626648	-104.699548	
17,800.00	90.11	90.84	7,558.95	-2,131.89	10,220.38	1,472,133.90	3,222,292.24	40.626641	-104.699188	
17,900.00	90.11	90.84	7,558.75	-2,133.36	10,320.36	1,472,132.43	3,222,392.23	40.626634	-104.698828	
18,000.00	90.11	90.84	7,558.55	-2,134.83	10,420.35	1,472,130.96	3,222,492.22	40.626628	-104.698468	
18,100.00	90.11	90.84	7,558.35	-2,136.30	10,520.34	1,472,129.49	3,222,592.21	40.626621	-104.698108	
18,200.00	90.11	90.84	7,558.15	-2,137.77	10,620.33	1,472,128.02	3,222,692.20	40.626615	-104.697748	
18,274.21	90.11	90.84	7,558.00	-2,138.86	10,694.53	1,472,126.93	3,222,766.40	40.626610	-104.697480	
<b>TD at 18274.21 - BHL 350 FSL 350 FEL Sec 30</b>										



<b>Database:</b>	EDM 5000.15 Single User Db	<b>Local Co-ordinate Reference:</b>	Well Simpson 36-9H
<b>Company:</b>	Edge Energy, LLC	<b>TVD Reference:</b>	WELL @ 5029.00usft (Original Well Elev)
<b>Project:</b>	Sec. 26-T8N-R66W	<b>MD Reference:</b>	WELL @ 5029.00usft (Original Well Elev)
<b>Site:</b>	SIMPSON 26 PAD	<b>North Reference:</b>	Grid
<b>Well:</b>	Simpson 36-9H	<b>Survey Calculation Method:</b>	Minimum Curvature
<b>Wellbore:</b>	Wellbore #1		
<b>Design:</b>	Plan #2		

Design Targets										
Target Name	Dip Angle	Dip Dir.	TVD	+N/-S	+E/-W	Northing	Easting	Latitude	Longitude	
- hit/miss target	(°)	(°)	(usft)	(usft)	(usft)	(ft)	(ft)			
- Shape										
SHL 2399 FSL 306 FEL - plan hits target center - Point	0.00	359.51	0.00	0.00	0.00	1,474,265.80	3,212,071.85	40.632740	-104.735940	
BHL 350 FSL 350 FEL S - plan hits target center - Point	0.00	359.48	7,558.00	-2,138.86	10,694.53	1,472,126.93	3,222,766.40	40.626610	-104.697480	
MP 350 FSL 0 FEL Sec : - plan hits target center - Point	0.00	359.49	7,568.20	-2,064.21	5,600.09	1,472,201.58	3,217,671.95	40.626940	-104.715830	
EP 350 FSL 350 FWL S - plan hits target center - Point	0.00	359.50	7,578.00	-2,037.78	705.98	1,472,228.01	3,212,777.83	40.627130	-104.733460	

Plan Annotations					
Measured Depth	Vertical Depth	Local Coordinates		Comment	
(usft)	(usft)	+N/-S	+E/-W		
		(usft)	(usft)		
500.00	500.00	0.00	0.00	Start Build 2.00	
1,348.77	1,336.41	-124.82	-0.65	Hold 16.98 Inc, 180.79 Az	
7,159.66	6,894.12	-1,821.34	-9.44	KOP 8°/100	
8,285.00	7,578.00	-2,037.78	705.98	LP 90.11 Inc, 91.07 Az	
13,179.21	7,568.20	-2,064.21	5,600.09	2/100 Turn	
13,219.39	7,568.12	-2,064.52	5,640.27	Hold 90.11 Inc, 91.34 Az	
18,274.21	7,558.00	-2,138.86	10,694.53	TD at 18274.21	