

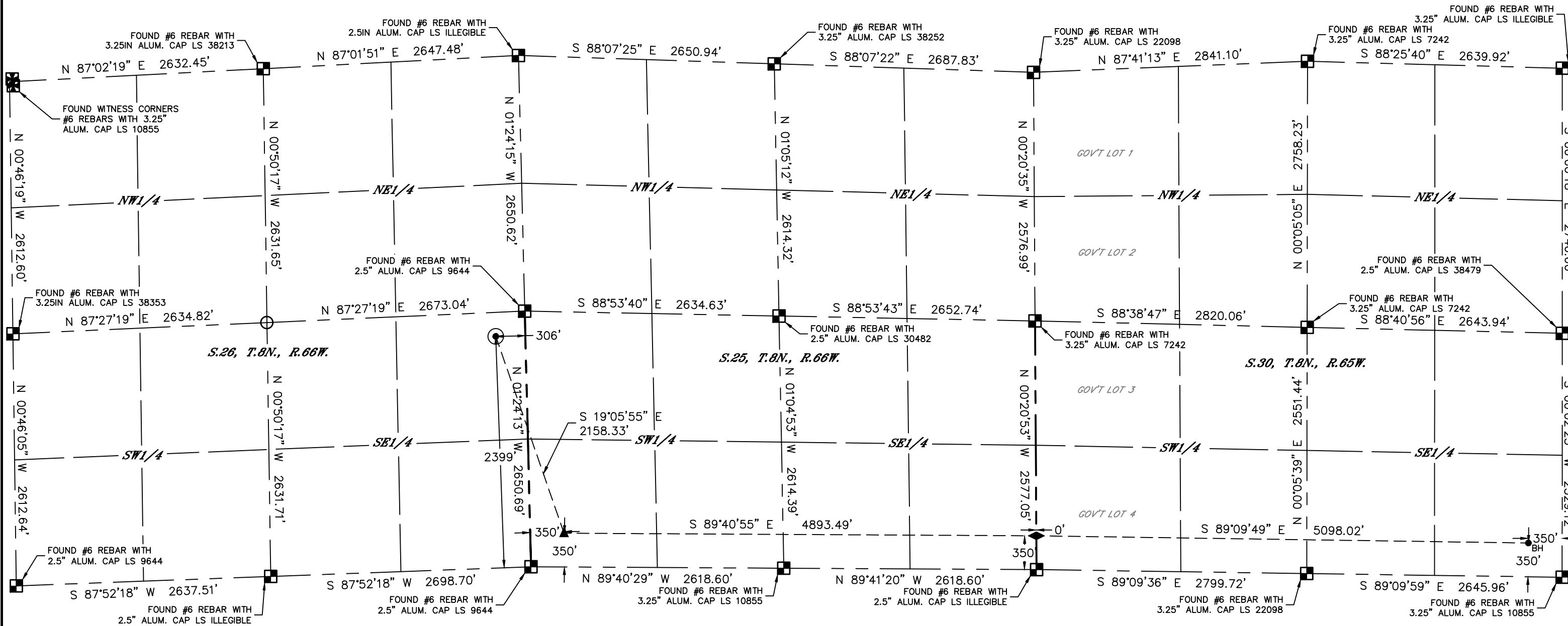


Lat40°, Inc. 6250 W. 10th Street, Unit 2, Greeley, CO 970-515-5294

# WELL LOCATION CERTIFICATE

SIMPSON 36-9H

SECTION: 26  
TOWNSHIP: 8N  
RANGE: 66W  
6TH. P.M.  
WELD COUNTY, CO



CLIENT: EDGE ENERGY				LANDMAN: ERIK LARSEN				
INSTRUMENT OPERATOR: DUNCAN HOTCHKISS				SURVEY DATE: 6/4/2018		SURFACE USE: CROP LAND		
SHL FOOTAGE		SHL LAT°	SHL LONG°	SHL PDOP	SHL ELEV (FT.)	SHL 1/4/1/4	SHL S-T-R	
2399	FSL	306	FEL	40.63274	-104.73594	2.3	5013	

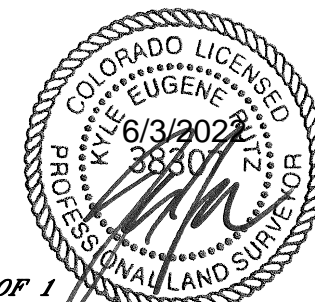
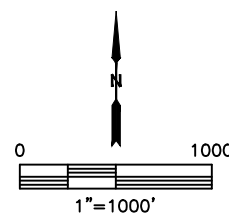
BHL FOOTAGE		BHL LAT°	BHL LONG°	BHL S-T-R	EP LAT°	EP LONG°	EP S-T-R	MID LAT°	MID LONG°	MID S-T-R
350	FSL	350	FEL	40.62661	-104.69748	30-8-65	40.62713	-104.73346	25-8-66	40.62694

### LEGEND

- = ALIQUOT MONUMENT AS DESCRIBED
- = CALCULATED POSITION
- = SURFACE HOLE LOCATION (SHL)
- ▲ = ENTRY POINT LOCATION (EP)
- ◆ = MID LATERAL TARGET (MID)
- <sub>BH</sub> = BOTTOM HOLE LOCATION (BHL)
- ⊕ = EXISTING WELL
- ⊖ = ABANDONED WELL

### NOTE:

- 1) Bearings shown are Grid Bearings of the Colorado State Plane Coordinate System, North Zone, North American Datum 1983. The lineal dimensions as contained herein are based upon the "U.S. Survey Foot."
- 2) Distances to section lines measured at 90 degrees from said section lines.
- 3) Ground elevations are based on an observed GPS elevation (NAVD 1988 DATUM).
- 4) Latitude and Longitude shown are (NAD 83 DATUM).
- 5) IMPROVEMENTS: See LOCATION DRAWING for all visible improvements.
- 6) This map does not represent a boundary survey.



**SHEET 1 OF 1**  
 Kyle E. Rutz—On behalf of Lat40°, Inc.  
 Colorado Licensed Professional Land Surveyor No. 38307  
 DATE: 6/3/2022  
 PROJECT#: 2018095