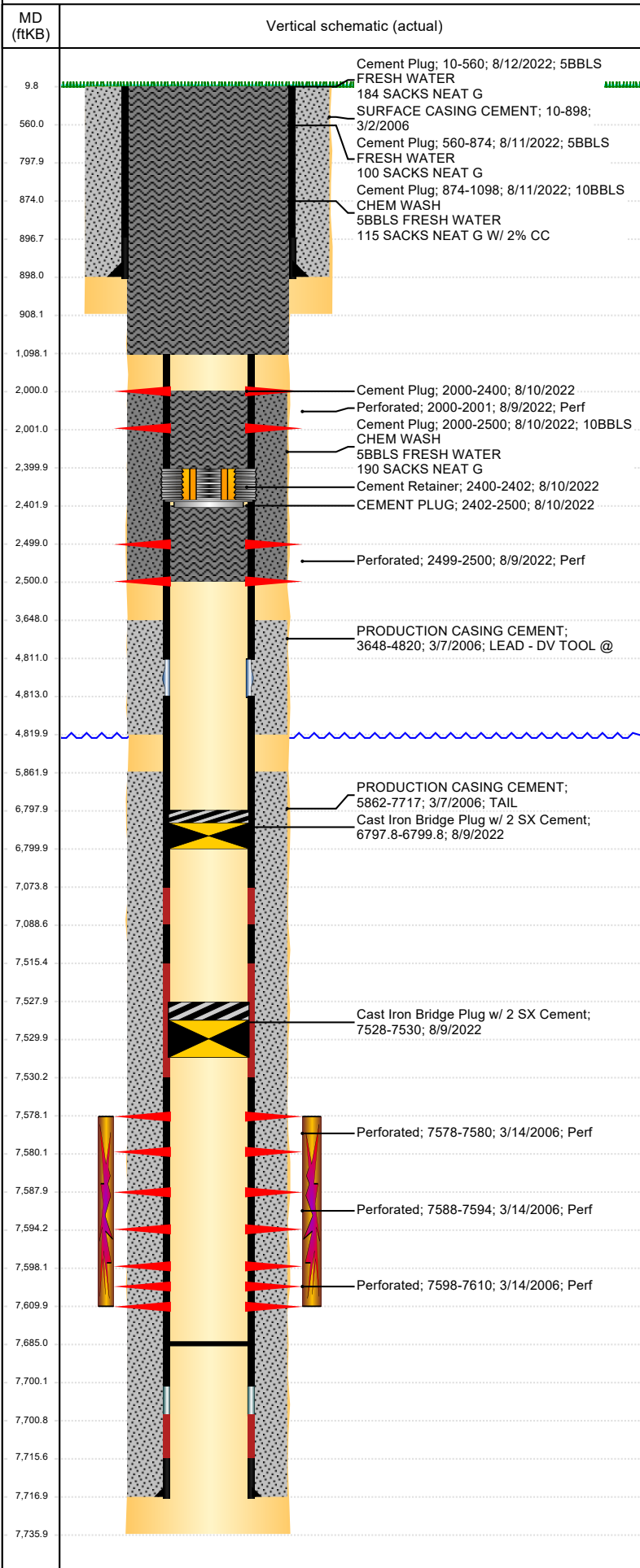




# P&A Wellbore For State

Well Name: HP FARMS Y 7-15JI

Land, Original Hole, 11/1/2022 3:33:26 PM



Well Header	
Surface UWI 0512323277	Business Unit Rockies
Gov Auth Dist PA	Prod Tree Loc Land
Orig. KB to Gnd (ft) 10.00	Original Spud Date 3/1/2006
Abandon Date 10/5/2022	Well Sub-Status PA
High Pres N	
Comment 3/13/06 - DV TOOL DRILLED OUT @ 4811.	
Surface Location (Congressional)	
Quarter 3 SW	Quarter 4 SE
Section 7	Township 2
Twnshp N N	Range 64
Rng E/W W	Latitude (°) 40° 8' 49.695" N
Longitude (°) 104° 35' 33.017" W	
Wellbore Sections	
Section Des	Hole Size (in)
SURFACE	12 1/4
PRODUCTION	7 7/8
Act Top (ftKB)	Act Btm (ftKB)
10.0	908.0
908.0	7,736.0
Casing Strings	
Csg Des	Run Date
Surface	3/2/2006
Production Casing	3/7/2006
OD (in)	Wt/Len (lb/ft)
8 5/8	24.00
4 1/2	11.60
Grade	Top Depth (MD) (ftKB)
M-80	10
Set Depth (MD) (ftKB)	
898	7717
Cement	
Des	Start Date
SURFACE CASING CEMENT	3/2/2006
PRODUCTION CASING CEMENT	3/7/2006
PRODUCTION CASING CEMENT	3/7/2006
Cement Plug	8/10/2022
Cement Plug	8/10/2022
CEMENT PLUG	8/10/2022
Cement Plug	8/11/2022
Cement Plug	8/11/2022
Cement Plug	8/12/2022
Top (ftKB)	Btm (ftKB)
10.0	898.0
3,648.0	4,820.0
5,862.0	7,717.0
2,000.0	2,500.0
2,000.0	2,400.0
2,402.0	2,500.0
798.0	1,098.0
560.0	874.0
10.0	560.0
Zone Statuses	
Zone Name	Status Date
J SAND	2/2/2010
J SAND	8/9/2022
Status	Fluid Type
PR	
Closed	
Job	Prod Method
	Flowing
Perforation Data	
Linked Zone	Explosive Type
J SAND, Original Hole	
J SAND, Original Hole	
J SAND, Original Hole	
Entered Shot Total	Top (ftKB)
8	2,000.0
24	2,499.0
48	7,578.0
Btm (ftKB)	Date
2,001.0	8/9/2022
2,500.0	8/9/2022
7,580.0	3/14/2006
7,594.0	3/14/2006
7,610.0	3/14/2006
Stimulation Intervals	
Zone	Start Date
J SAND, Original Hole	3/22/2006
Top (ftKB)	Btm (ftKB)
7,578.0	7,610.0
Other In Hole	
Run Date	Des
8/9/2022	Cast Iron Bridge Plug w/ 2 SX Cement
8/9/2022	Cast Iron Bridge Plug w/ 2 SX Cement
8/10/2022	Cement Retainer
Make	OD (in)
	4
	4
	4
Top (ftKB)	Btm (ftKB)
7,528.0	7,530.0
6,797.8	6,799.8
2,400.0	2,402.0
Logs	
Date	Type
3/7/2006	COMPENSATED DENSITY
3/7/2006	INDUCTION
3/14/2006	CEMENT BOND
7/9/2018	GYRO
Depth Top (MD) (ftKB)	Btm (ftKB)
3,000	7,715.0
850	7,735.0
3,470	7,682.0
10	7,400.0
Plug Back Total Depths	
Date	Type
3/7/2006	FLOAT COLLAR
3/14/2006	FILL
Com	PBTD (ftKB)
TOP OF FLOAT COLLAR	7,700
DEPTH LOGGER ON CBL	7,685