



August 23, 2022

Mr. Austin Lee
HSE Advisor
Occidental Petroleum Corporation
501 N Division Blvd
Platteville, Colorado 80651

**Subject: Form 4 Sundry Notice – Final Reclamation
Kerr-McGee Oil & Gas Onshore LP (Operator: 47120)
STAMM 11-25 #1, Location ID: 318336
NWNW S25-T2N-R67W
Weld County, Colorado**

Dear Mr. Lee:

WSP USA (WSP) was contracted by Kerr McGee Oil & Gas Onshore LP (Kerr-McGee) to complete final reclamation inspections at plugged and abandoned (P&A) well sites located in Weld County, Colorado. The reclamation inspections were conducted in accordance with Colorado Oil and Gas Conservation Commission (COGCC) Rule 1004.

The former STAMM 11-25 #1 well (API: 05-123-08918) was P&A'd on September 11, 2008, according to Form 6 Document Number 1666580. On June 15, 2022, WSP conducted a final reclamation inspection for the former STAMM 11-25 #1 well pad (Location ID: 318336). The reclaimed well pad was seeded with a native grass seed mix. The reclaimed location is situated on non-irrigated rangeland/pasture and has been returned to that land use. A modified line-point intercept vegetation survey was conducted on the reclaimed well pad and on adjacent reference areas for comparison. Foliar and basal cover, along with non-vegetated, and noxious weed occurrences were documented. A total of 50 survey points along a 50-foot transect were recorded within the reclaimed disturbance area and 50 survey points along the two 50-foot transect were recorded within the reference area. Undesirable species, if present, were excluded from the vegetative coverage calculation. Survey results indicate the reclaimed area has a foliar vegetative cover that is 80% of the undisturbed reference area. The associated tank battery location is unknown based upon research with OXY and within the COGCC COGIS database. The inspection and vegetation survey indicate that final reclamation has been achieved in compliance with COGCC Rule 1004, which applies to the reclamation of non-crop lands. WSP personnel located the P&A wellhead location using a handheld Trimble (R1) Global Positioning System (GPS) unit and latitude and longitude coordinates obtained from the COGCC online database. A general site location map is included as Figure 1; and the Site Map displaying the location of the reclaimed site on aerial imagery is included as Figure 2. A vegetative analysis by conducting a Line Point Intercept is included as Figure 3. Photographs of the P&A location were taken facing each cardinal direction from the P&A wellhead location. The photographic log is included as Attachment 1.

Based on the successful reclamation of the STAMM 11-25 #1 site, a Form 4 Sundry Notice requesting final reclamation status has been prepared for the submittal to the COGCC. This letter will be included as an attachment to the electronic Form 4 submittal.

If you have any questions or need additional information, please do not hesitate to contact us.

Kind regards,

WSP USA
4600 WEST 60TH AVENUE
ARVADA CO 80003

Tel.: 303-433-9788
wsp.com



A handwritten signature in black ink, appearing to read 'Tanna Lyon'.

Tanna Lyon,
Lead Consultant, Environmental Scientist

A handwritten signature in black ink, appearing to read 'Stacey Baum'.

Stacey Baum,
Associate Consultant, Biologist

Attachments:

Figure 1	Site Location Map
Figure 2	Site Map
Figure 3	Vegetative Analysis LPI
Enclosure A	Photographic Log

FIGURES

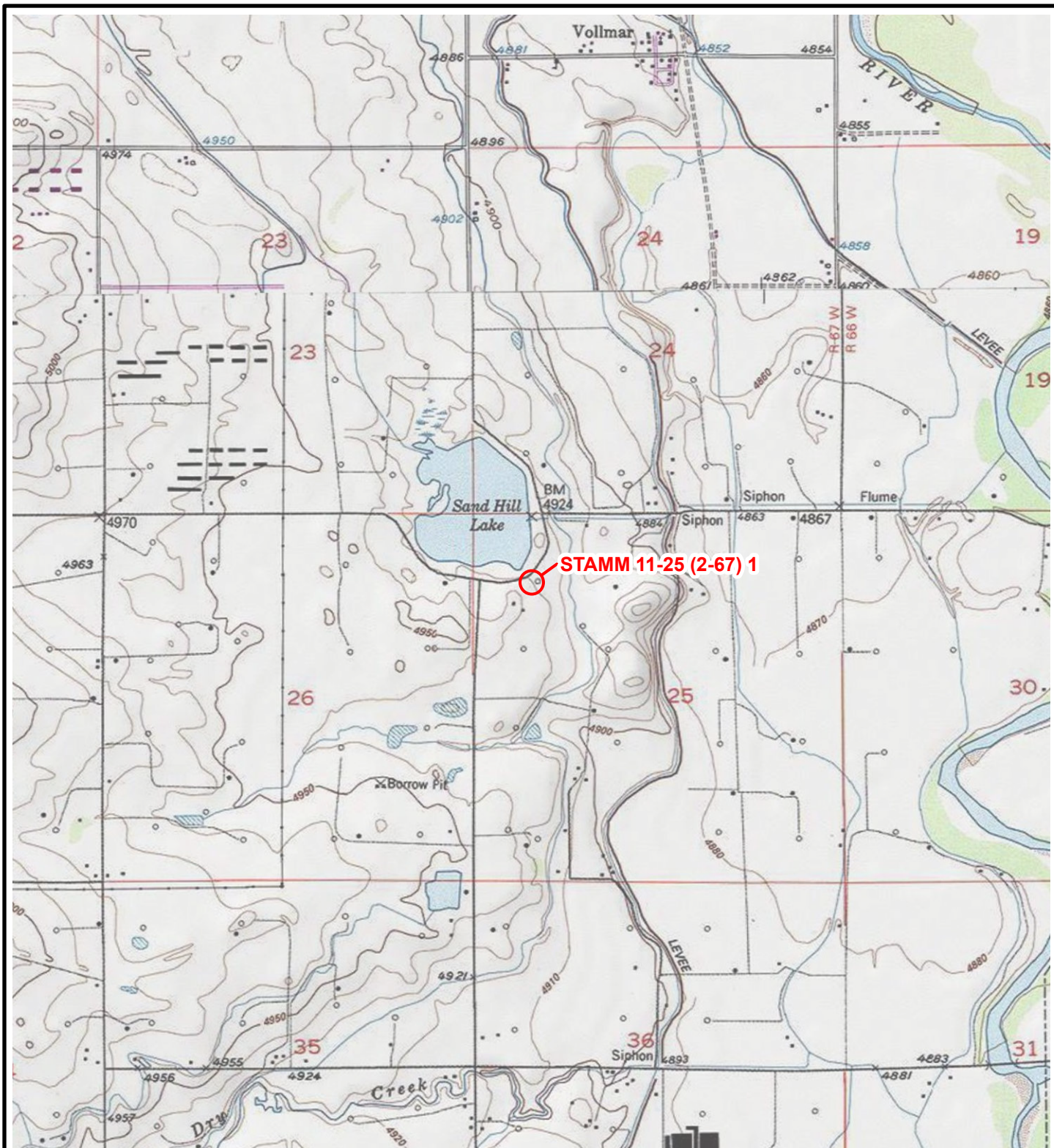
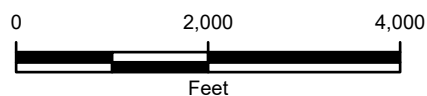


IMAGE COURTESY OF ESRI/USGS

LEGEND

 SITE LOCATION



COLORADO



FIGURE 1
SITE LOCATION MAP
STAMM 11-25 (2-67) 1
NWNW SEC 25 T2N R67W
WELD COUNTY, COLORADO
KERR-MCGEE OIL & GAS ONSHORE, LP

wsp



IMAGE COURTESY OF GOOGLE EARTH (2021)

LEGEND

● PLUGGED & ABANDONED WELLHEAD

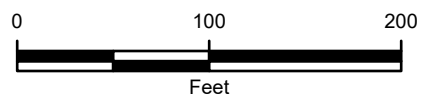


FIGURE 2
SITE MAP
STAMM 11-25 (2-67) 1
NWNW SEC 25 T2N R67W
WELD COUNTY, COLORADO
KERR-MCGEE OIL & GAS ONSHORE, LP



64% Desirable
on-site veg

Stamm 11-25 1

Need 80% of off-site = 62.4

Line-point Intercept Data Form

on-site

Page 1 of 2

Shaded cells for calculations

Plot: _____ Line #: _____ Observer: SBaum Recorder: SBaum

Direction: N-S Date: 4/15/22 Intercept (Point) Spacing Interval = _____ cm (_____ in)

Pt.	Top layer	Lower layers			Soil surface	Pt.	Top layer	Lower layers			Soil surface
		Code 1	Code 2	Code 3				Code 1	Code 2	Code 3	
1	1	L				26	3	L			
2	1	L				27	none	L			
3	1	L				28	3	L			
4	none	L				29	5	L			
5	2	2				30	none	L			
6	none	L				31	5	L			
7	3	L				32	none				S
8	none	L				33	5	5			
9	4	L				34	none	L			
10	none	L				35	2	2			
11	none	L				36	none				S
12	2	2				37	none	L			
13	2	2	L			38	none	L			
14	none	L				39	none	L			
15	3	3				40	4	L			
16	2	2				41	4	L			
17	4	4				42	6	L			
18	none	L				43	4	L			
19	none				S	44	none				S
20	2	L				45	4	4	L		
21	none	L				46	4	2			
22	1	1				47	none				S
23	2	2	L			48	4	L			
24	none	L				49	none	L			
25	2	L				50	6	6			

% foliar cover = 20 top layer pts (1st col) x 2 = 40 %
 % bare ground* = 5 pts (w/NONE over S) x 2 = 10 %
 % basal cover = 10 plant base pts (last col) x 2 = 20 %

Top layer codes: Species code, common name, or NONE (no cover).

Lower layers codes: Species code, common name, L (herbaceous litter), WL (woody litter, >5 mm (~1/4 in) diameter).

1 - crested wheat grass

12 2 - western wheat grass

* 3 - cheat grass

Unknown

Species Codes:

AF# = annual forb
 PF# = perennial forb
 AG# = annual
 PG# = perennial
 SH# = shrub
 TR# = tree

Soil Surface (do not use litter):

Species Code (for basal intercept)

R = rock fragment (>5 mm (~1/4 in) diameter)
 BR = bedrock, M = moss
 LC = visible biotic crust on soil
 S = soil without any other soil surface code
 EL = embedded litter (see page 10)
 D = duff

*Bare ground occurs ONLY when Top layer = NONE, Lower layers are empty (no L), and Soil surface = S.

4 - drop seed

5 - russian thistle

6 - wheat

78% desirable veg

Stamm 11-251

Line-point Intercept Data Form

off-site
50'Page 2 of 2

Shaded cells for calculations

Plot: _____ Line #: _____ Observer: SBaum Recorder: SBaumDirection: N-S Date: 6/5/22 Intercept (Point) Spacing Interval = _____ cm (____ in)

Pt.	Top layer	Lower layers			Soil surface	Pt.	Top layer	Lower layers			Soil surface
		Code 1	Code 2	Code 3				Code 1	Code 2	Code 3	
1	1	1				26	1	L			
2	1	L				27	1	L			
3	1	L				28	1	L			
4	none	L				29	1	L			
5	none	L				30	none	L			
6	1	L				31	1	L			
7	1	L				32	1	L			
8	1	1	L			33	none				S
9	1	L				34	1	L			
10	1	L				35	none	L			
11	1	L				36	none	L			
12	none	L				37	none	L			
13	none				S	38	1	L			
14	1	2				39	1	1	L		
15	2	L				40	1	4	L		
16	none	L				41	none	L			
17	3	L				42	none	L			
18	2	L				43	1	L			
19	none	L				44	1	4	L		
20	1	1				45	4	1	L		
21	1	L				46	1	L			
22	1	L				47	none	L			
23	1	L				48	none	L			
24	1	1				49	2	L			
25	1	L				50	none				S

% foliar cover = 32 top layer pts (1st col) x 2 = 64 %% bare ground* = 3 pts (w/NONE over S) x 2 = 6 %% basal cover = 7 plant base pts (last col) x 2 = 14 %**Top layer codes:** Species code, common name, or NONE (no cover).**Lower layers codes:** Species code, common name, L (herbaceous litter), WL (woody litter, >5 mm (~1/4 in) diameter).**Unknown Species Codes:**

AF# = annual forb
 PF# = perennial forb
 AG# = annual graminoid
 PG# = perennial graminoid
 SH# = shrub
 TR# = tree

Soil Surface (do not use litter):

Species Code (for basal intercept)

R = rock fragment (>5 mm (~1/4 in) diameter)
 BR = bedrock, M = moss
 LC = visible biotic crust on soil
 S = soil without any other soil surface code
 EL = embedded litter (see page 10)
 D = duff

*Bare ground occurs ONLY when Top layer = NONE, Lower layers are empty (no L), and Soil surface = S.

12 1 - wheat
 2 - western wheat grass
 3 - Russian thistle

4 - Cheat grass

ENCLOSURE A – PHOTOGRAPHIC LOG

PHOTOGRAPHIC LOG		
Kerr-McGee Oil & Gas Onshore LP	STAMM 11-15 #1 Weld County, Colorado	40.113639, -104.845653



Photo No.	Date	
1	June 15 ,2022	
View facing north as required in Colorado Oil and Gas Conservation Commission (COGCC) Rule 1004.		

Photo No.	Date	
2	June 15 ,2022	
View facing east as required in COGCC Rule 1004.		



PHOTOGRAPHIC LOG		
Kerr-McGee Oil & Gas Onshore LP	STAMM 11-15 #1 Weld County, Colorado	40.113639, -104.845653



Photo No.	Date	
3	June 15 ,2022	
View facing south as required in COGCC Rule 1004.		

Photo No.	Date	
4	June 15 ,2022	
View facing west as required in COGCC Rule 1004.		

PHOTOGRAPHIC LOG		
Kerr-McGee Oil & Gas Onshore LP	STAMM 11-15 #1 Weld County, Colorado	40.113639, -104.845653


Photo No.	Date	
5	June 15 ,2022	
Overall site view per COGCC Rule 1004.		

Photo No.	Date	
6	June 15 ,2022	
TB location unknown.		