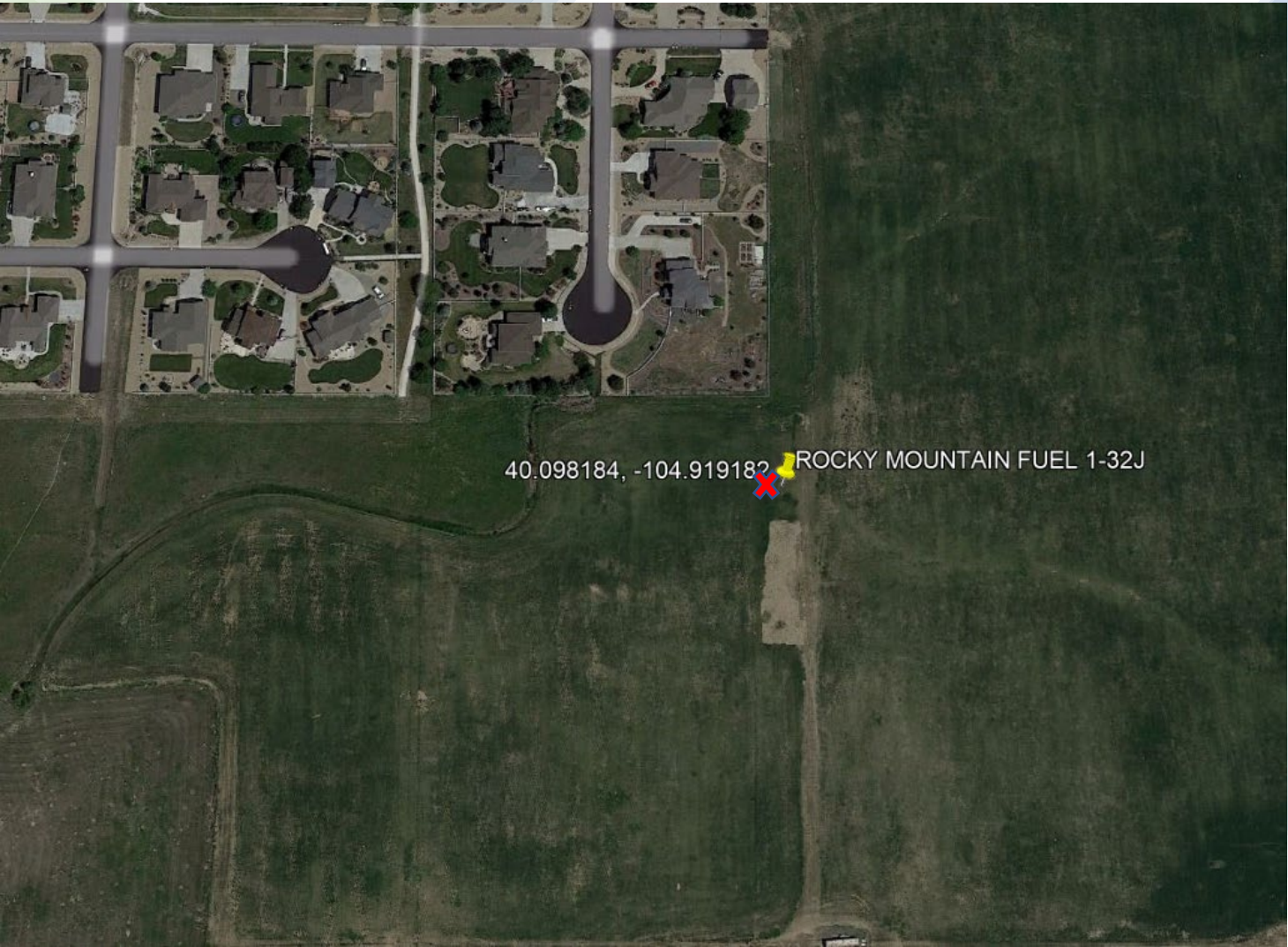


ROCKY MTN FUEL CO-62N67W 32CNW (Location ID 319481)  
ROCKY MTN FUEL CO1-32 J (API: 05-123-11337)  
SENW Sec. 32, T2N-R67W  
Weld County, CO



✖ Soil Sample Location

Facility	Lat	Long
ROCKY MTN FUEL CO1-32 J wellhead (05-123-11337)	40.098431	-104.919101
Pit (ID #118076)	40.098184	-104.919182

ROCKY MTN FUEL CO-62N67W 32CNW (Location ID 319481)  
ROCKY MTN FUEL CO1-32 J (API: 05-123-11337)  
SENW Sec. 32, T2N-R67W  
Weld County, CO

No High Priority Habitat Identified

Receptor	DWR Reciept (Permit #)	Distance (ft)	Direction	Well Depth (ft)	Static Water Level (ft)
Geothermal Well	3628587B (34-GX)	1255	NW	70	N/A

Legend

Well (API Spot)

Water Well

Pit location

