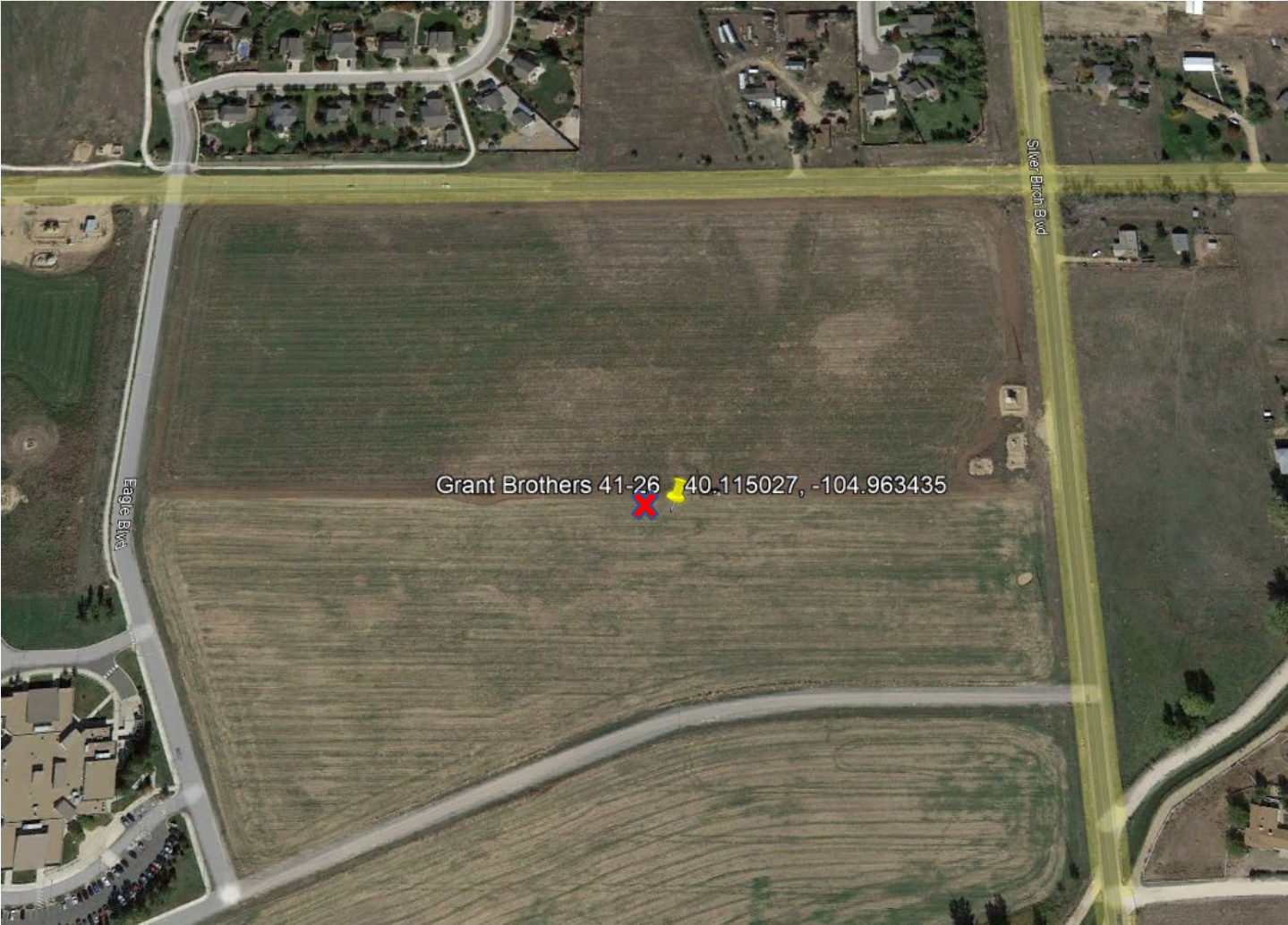


Grant Bros 62N68W-26NENE (Location ID 336511)  
Grant Bros 41-26 (API: 05-123-08469)  
NENE Sec. 26, T2N-R68W 6  
Weld County, CO



✖ Soil Sample Location

Facility	Lat	Long
Grant Bros 41-26 wellhead (API: 05-123-08469)	40.115120	-104.963250
Pit (ID #119905)	40.115027	-104.963435



Grant Bros 62N68W-26NENE (Location ID 336511)  
Grant Bros 41-26 (API: 05-123-08469)  
NENE Sec. 26, T2N-R68W 6  
Weld County, CO

No High Priority Habitat Identified

Receptor	DWR Reciept (Permit #)	Distance (ft)	Direction	Well Depth (ft)	Static Water Level (ft)
Monitoring Hole	0059329 (59329-MH)	1171	NW	14	N/A
Monitoring/ Observation	10017725 (325053-)	1237	NW	16	N/A
Residential	9063724 (34040-)	784	NE	80	N/A
Residential	9065050 (65291-)	1242	NE	242	191

Legend

Water Well

Well (API Spot)

Pit location

