

AMOCO STATE #41-16

(API #001-09558)

Loc. #320541

FIELD NAME WATTENBERG - #90750

Spud Date 6/5/2006

Basin DENVER - JULESBURG

Location NENE 16 1S65W 6

Elevation 5191' GL

TD 8295'

PBTD 8283'

Formation Tops

DENVER - 88'

UPPER ARAPAHOE - 249'

LOWER ARAPAHOE - 510'

FOX HILLS TOP - 1178'

FOX HILLS BASE - 1414'

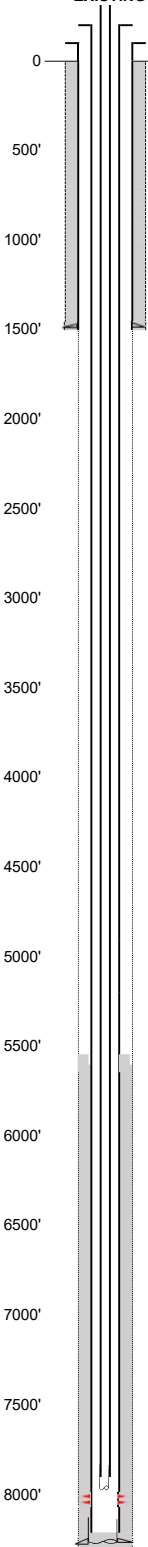
Base of Upper Pierre - 2480'

NIOBRARA - 7194'

FORT HAYS - 7538'
CODELL - 7562

D SAND - 7946'
J SAND - 8006'
DAKOTA - 8187'

EXISTING



Existing Casing and Cement Coverage

SURF: Size: 8.625", Hole Size: 12.25 in.
Depth: 1507 ft., Weight: 24
Cement: 570 sx, Top: 0 ft., Method: Vis

UPPER ARAPAHOE - 249'

LOWER ARAPAHOE - 510'

FOX HILLS TOP - 1178'

Deepest DWR w/in 1 mi. = 1280'

FOX HILLS BASE - 1414'

1ST. Size: 4.5", Hole Size: 7.875"
Depth: 8295', Weight: 11.6
Cement: 420 sx, TOC: 5550', Method: CALC

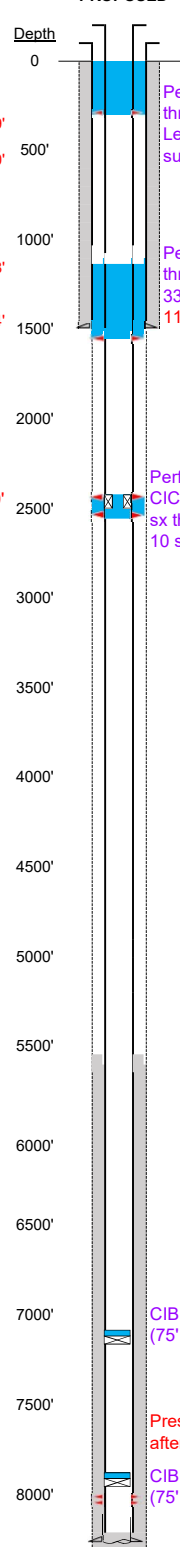
Base of Upper Pierre - 2480'

TOC=5550' (CALC)

NIOBRARA - 7194'

2-3/8" tubing set at 7968'
J Sand Perfs 8006'-8042'
PBTD=8283'
TD=8295'

PROPOSED



Plug Placement

Perf at 299'. Pump 80 sx
through perfs to surface.
Leave 25 sx inside to
surface.

Perf at 1557', pump 110 sx
through perfs. Leave at least
33 sx inside. Tag above
1130' required

Perf at 2530' & 2430'
CICR @2440, pump 40
sx through perfs. Leave
10 sx on top.

CIBP w/ 2 sx @ 7119'
(75' above Nio top).

Pressure test casing
after setting CIBP.

CIBP w/ 2 sx @ 7931'
(75' above top perf).