

AMOCO STATE 43-16

(API #001-08703)

Loc. #320242

FIELD NAME WATTENBERG - #90750

Spud Date 5/24/1985

Basin DENVER - JULESBURG

Location NESE 16 1S65W 6

Elevation 5248' GL

TD 8212'

PBTD 8196'

Formation Tops

DENVER - 133'

UPPER ARAPAHOE - 309'

LOWER ARAPAHOE - 598'

FOX HILLS TOP - 1256'

FOX HILLS BASE - 1491'

Base of Upper Pierre - 2550'

NIOBRARA - 7224'

FORT HAYS - 7621'

CODELL - 7648'

GREENHORN - 7716'

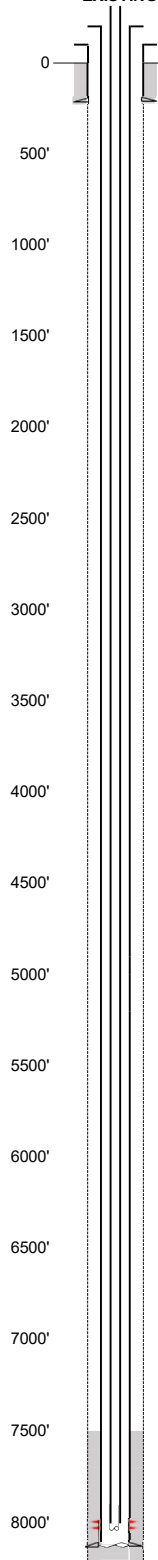
BENTONITE - 7922'

D SAND - 8023'

J SAND - 8082'

SKULL CREEK - 8126'

EXISTING



Existing Casing and Cement Coverage

SURF: Size: 8.625", Hole Size: 12.25 in.

Depth: 222 ft., Weight: 24

Cement: 165 sx, Top: 0 ft., Method: Vis

UPPER ARAPAHOE - 309'

LOWER ARAPAHOE - 598'

Deepest DWR w/in 1 mi.= 1240'

FOX HILLS TOP - 1256'

DV Tool @ 1482', 200 sx

FOX HILLS BASE - 1491'

1ST, Size: 4.5", Hole Size: 7.875"

Depth: 8212', Weight: 10.5 & 11.6

Cement: 150 sx, TOC: 7554', Method: Calc

Base of Upper Pierre - 2550'

TOC=7554' (CALC.)

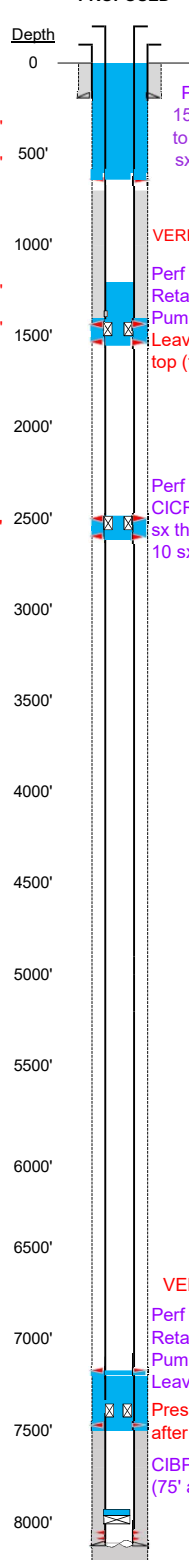
J Sand Perfs 8081'-8124'

2-3/8" tubing set at 8100'

PBTD=8196'

TD=8212'

PROPOSED



Plug Placement

Perf at 648', pump 150 sx through perfs to surface. Leave 60 sx inside to surface.

VERIFY Bottom of Cement w/ CBL

Perf at 1541' & 1495'.

Retainer at 1505'.

Pump 15 sx through.

Leave 25 sx (315') on top (tag at 1190').

Perf at 2600' & 2500'

CICR @2510, pump 40

sx through perfs. Leave 10 sx on top.

CBL Required

VERIFY TOC w/ CBL

Perf at 7544' & 7174'.

Retainer at 7494'.

Pump 80 sx through.

Leave 25 sx on top.

Pressure test casing

after setting CIBP.

CIBP w/ 2 sx @ 8006'

(75' above top perf).