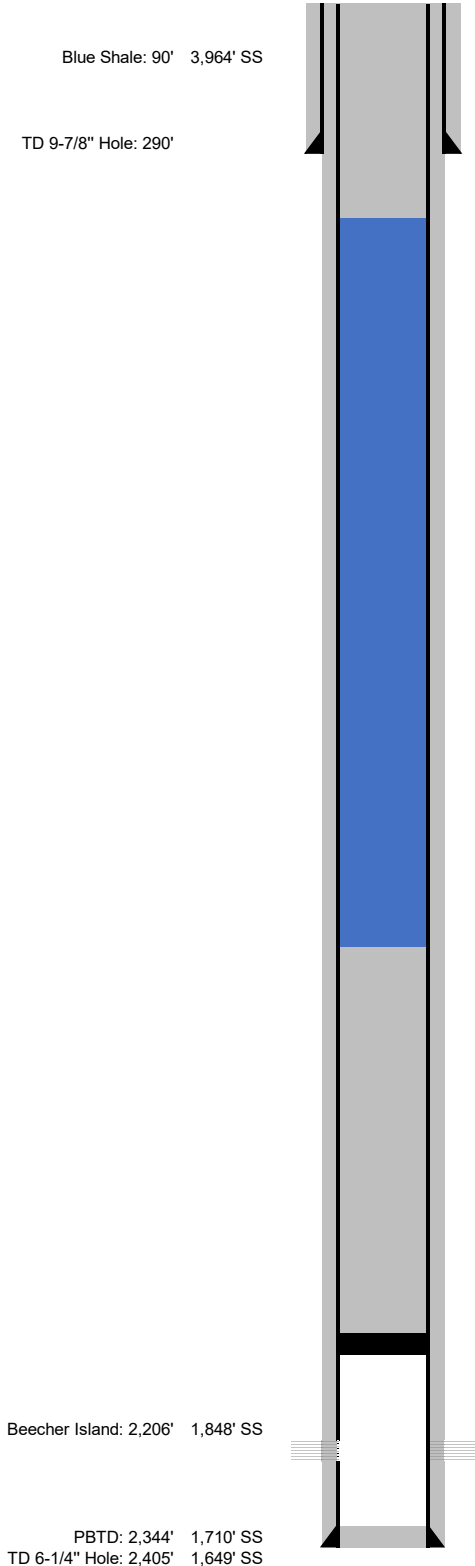


**CWC PETRO LLC  
PROPOSED P&A WBD**

**WELL NAME:** Eagle 2-5  
**LOCATION:** 2,100' FNL & 450' FWL  
SWNW Sec 2, T3S, R46W  
**COUNTY, STATE:** Yuma, Colorado  
**FIELD:** Mildred South

**GL:** 4,049'  
**KB:** 4,054'  
**API NO:** 05-125-11022-00  
**Fed. Lse. No:**  
**PBTD:** 2,344'  
**TD:** 2,405'  
**WI:**  
**NRI:**



**CBL TOC at surface (01-15-08)**

**7" Surface Casing Landed at 282.47' (11-26-07)**  
7 jts (276.5') 7", 17#, J-55, STC

M&P 75 sx "G" + 3% CaCl2 + 2% gel @15.6 ppg; y = 1.15. Bumped plug. Circulated 9 bbls cement to pit.

**Plug #2**  
25 sxs class A. 1.18 ft<sup>3</sup>/ft. 29.5 ft<sup>3</sup> cement (330' of cement in 4.5" 10.5# casing, 0.0895 ft<sup>3</sup>/ft)  
332' up to surface

**Plug #1**  
25 sxs class A. 1.18 ft<sup>3</sup>/ft. 29.5 ft<sup>3</sup> cement (330' of cement in 4.5" 10.5# casing, 0.0895 ft<sup>3</sup>/ft)  
2,156' up to 1,826' (330' of cement)

**CIBP Set @ 2,156'**

**Niobrara Perforated Interval (01-15-08)**  
2,206' 2,236' 30'

**4-1/2" Production Casing Landed at 2,362' (11-29-07)**  
57 jts (2,360.75') 4-1/2", 10.5#, J-55, STC  
M&P 100 sx "Lite" + 0.24 pps Flo-Seal @12.2 ppg; y = 1.81 Lead and 75 sx "ASC" + 2% gel + 0.25 pps Flo-Seal @14.5 ppg; y = 1.57 Tail. Bumprd plug. 17 bbls cement to pit.  
Note: Centralizers on jts 1, 2, 3, 4, 5 & 6. Cement baskets on jts 6, 18 & 30 (11-29-07).

**Prepared by: CWC**

**Date: 10/28/2022**