

**Legend**

- Underground Flowline Location  
(Collected via Trimble GPS)
- - - Excavation Extent  
(Collected via Trimble GPS)
- + Laboratory Sample Location  
(Collected via Trimble GPS)
- + Field Screening Sample Location  
(Collected via Trimble GPS)

**Notes**

All locations are approximate unless otherwise noted.

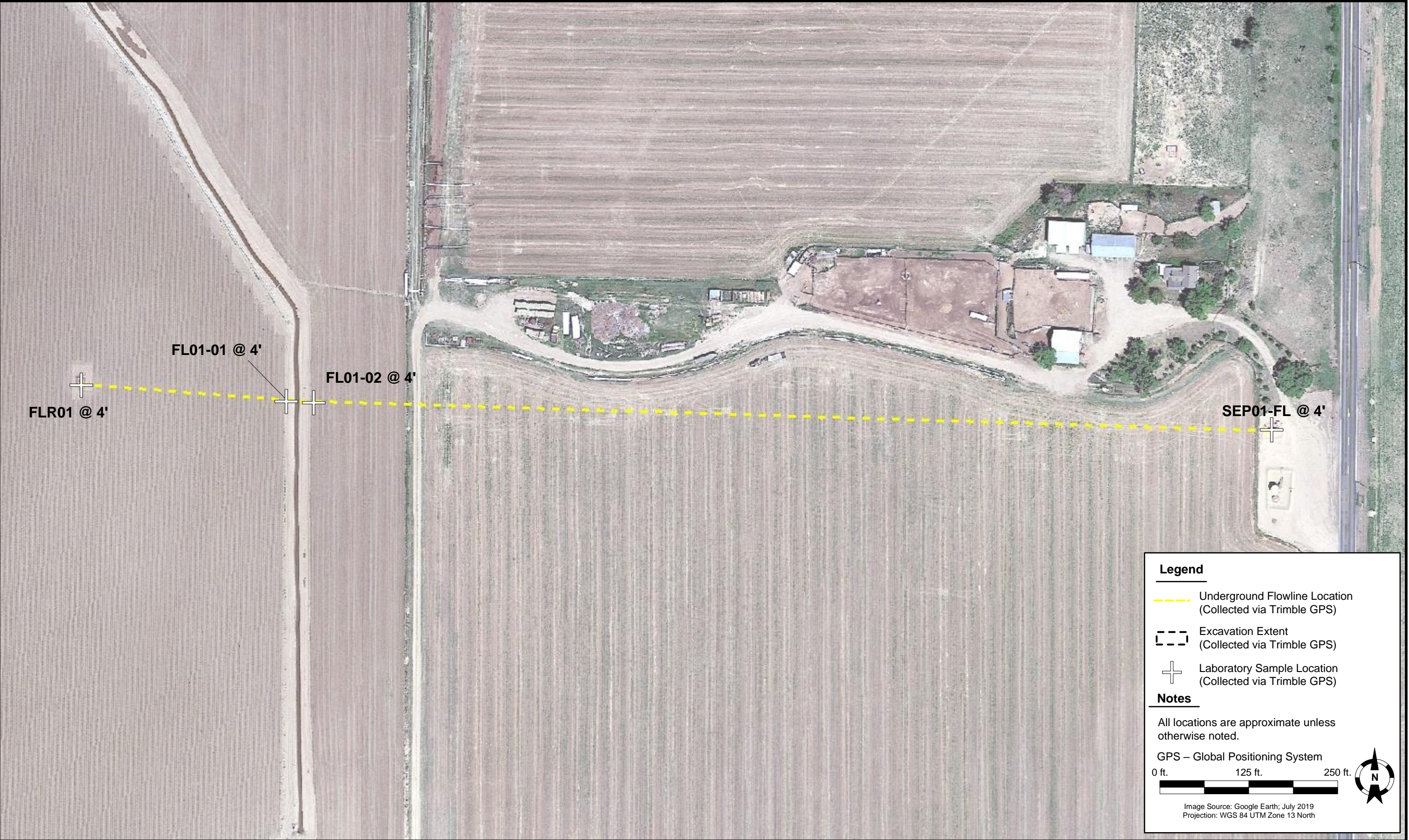
GPS – Global Positioning System

0 ft. 10 ft. 20 ft.

Image Source: Google Earth; July 2019  
Projection: WGS 84 UTM Zone 13 North

DATE: April 21, 2022	 <div><b>Tasman Inc.</b> 6855 W. 119<sup>th</sup> Ave. Broomfield, CO 80020</div>	<b>PDC Energy, Inc. – DJ Basin</b> <b>Former Gerry 3 Wellhead</b> NWSE, NESE Section 24, Township 6 North, Range 66 West Weld County, Colorado	<b>SOIL SAMPLE LOCATION MAP (WELLHEAD)</b>	<b>FIGURE 1</b>
DESIGNED BY: C. Hamlin				
DRAWN BY: R. Aronoff				





DATE:	April 21, 2022
DESIGNED BY:	C. Hamlin
DRAWN BY:	R. Aronoff



**Tasman Inc.**  
6855 W. 119<sup>th</sup> Ave.  
Broomfield, CO 80020

**PDC Energy, Inc. – DJ Basin**  
**Former Gerry 3 Wellhead**  
NWSE, NESE Section 24, Township 6 North, Range 66 West  
Weld County, Colorado

**SOIL SAMPLE  
LOCATION MAP  
(FLOWLINE)**

**FIGURE  
2**





**Legend**

- Underground Flowline Location  
(Collected via Trimble GPS)
- Excavation Extent  
(Collected via Trimble GPS)
- ✚ Proposed Soil Boring Location


**Notes**

All locations are approximate unless otherwise noted.

GPS – Global Positioning System

0 ft. 10 ft. 20 ft.

Image Source: Google Earth; July 2019  
Projection: WGS 84 UTM Zone 13 North

DATE: June 1, 2022	 <b>Tasman Inc.</b> 6855 W. 119 <sup>th</sup> Ave. Broomfield, CO 80020	<b>PDC Energy, Inc. – DJ Basin</b> <b>Former Gerry 3 Wellhead</b> NWSE, NESE Section 24, Township 6 North, Range 66 West Weld County, Colorado	<b>PROPOSED SOIL BORING LOCATION MAP (WELLHEAD)</b>	<b>FIGURE 3</b>
DESIGNED BY: C. Hamlin				
DRAWN BY: K. Shepherd				