



---

# **Caerus Operating LLC**

## **LONG STRING POST JOB REPORT**

**BJU B26 FED 12B-26-496 05-045-24433**  
**S:26 T:4S R:96W Garfield CO**

CallSheet #: 83456  
Proposal #: 63264



**LONG STRING Post Job Report**

**Attention:** Mr. Cole Walton | (720) 880-6325 | cwalton@caerusoilandgas.com

Caerus Operating LLC

1001 17TH STREET | DENVER, CO 80202

---

Dear Mr. Cole Walton,

Thank you for the opportunity to provide cementing services on this well. American Cementing strives to achieve complete customer satisfaction. If you have any questions regarding the services or data provided, please contact American Cementing at any time.

Sincerely,

**Holly Mbugua**

Field Engineer II | (720) 505-1300 | holly.mbugua@americacementing.com

**Field Office**      28730 US-6, Rifle, CO 81650  
Phone: (970) 657-1157

## Job Details & Summary

### Geometry

Type	Function	OD (in)	ID (in)	Weight (lb/ft)	Thread	Top (ft)	Bottom (ft)	Excess (%)
Casing	Outer	9.625	8.921	36	n/a	0	3023	0
Open Hole	Outer	n/a	8.75	n/a	n/a	3023	7095	25
Open Hole	Outer	n/a	8.75	n/a	n/a	7095	11857	0
Casing	Inner	4.5	4	11.6	n/a	0	11857	0

### Equipment / People

Unit Type	Unit	Power Unit	Employee #1	Employee #2
AS Cement Trailer Float	CTF-9309	TRC-424	Myers, Tucker	Kirchenwitz, Jacob
AS Cement Trailer Float	CTF-901	TRC-424	Myers, Tucker	Kirchenwitz, Jacob
AS Cement Trailer Float	CTF-048	TRC-201	Mendoza, Victor	
AS Cement Trailer Float	CTF-019	TRC-201	Mendoza, Victor	
Field Storage Silo	FSS-469			
Field Storage Silo	FSS-468			
Cement Trailer Float	CTF-249	TRC-054	Bonin, Matthew	Lough, Christopher
Light Duty Vehicles	LDV-061		Aden, Mark	
Cement Pump Float	CPF-136	TRH-855	Woronovitch, Collin	

### Timing

Event	Date/Time
Call Out	9/12/2022 12:30
Depart Facility	9/12/2022 17:00
On Location	9/12/2022 18:48
Rig Up Iron	9/12/2022 19:05
Job Started	9/12/2022 23:07
Job Completed	9/13/2022 01:49
Rig Down Iron	9/13/2022 01:55
Depart Location	9/13/2022 03:30

### General Job Information

Metrics	Value
Well Fluid Density	10.6 lb/gal
Well Fluid Type	WBM
Rig Circulation Vol	600 bbls
Rig Circulation Time	1 hours
Calculated Displacement	183 bbls
Actual Displacement	183 bbls
Total Spacer to Surface	0 bbls
Total CMT to Surface	0 bbls
Well Topped Out	N/A

### Job Details

Metrics	Value
Flare Prior to Job	No
Flare Prior to Job	0 units
Flare During Job	No
Flare During Job	0 units
Flare at End of Job	No
Flare at End of Job	0 units
Well Full Prior to Job	Yes
Well Fluid Density Into Well	10.6 lb/gal
Well Fluid Density Out of Well	10.6 lb/gal

### Job Details (cont.)

Metrics	Value
BHCT	214 °F
BHST	282 °F

### Water Analysis

Metrics	Value	Recommended
Water Source	None	
Temperature	66.7 °F	50-80 °F
pH Level	7	5.5-8.5
Chlorides	0 mg/L	0-3000 mg/L
Total Alkalinity	180	0-1000
Total Hardness	425 mg/L	0-500 mg/L
Carbonates	0 mg/L	0-100 mg/L
Sulfates	<200 mg/L	0-1500 mg/L
Potassium	0 mg/L	0-3000 mg/L
Iron	0 mg/L	0-300 mg/L

### Circulation

Lost Circulation Experienced	Losses into Spacer	Losses into Cement	Losses into Displacement
Yes	0	375	0

#### Circulation Details

Gained returns 50 BBLS into lead with parasite air. Lost returns at 120 BBLS into tail.

### Job Execution Information

Fluid	Product	Function	Density (lb/gal)	Yield (ft <sup>3</sup> /sk)	Water Rq. (gal/sk)	Water Rq. (gal/bbl)	Volume (sks)	Volume (bbl)	Designed Top (ft)
1	Mud Flush	Flush	8.45			40.86		20.00	653
2	Scavenger	Scavenger	11.50	2.76	16.68		235.00	115.48	1000
3	Lead	Lead	12.70	2.00	11.00		716.00	255.30	3000
4	Tail	Tail	13.50	2.00	9.66		832.00	295.87	6732
5	Water + KCL Sub	DisplacementFinal	8.34			42.00		187.00	0

### Job Fluid Details

Fluid	Type	Fluid	Product	Function	Conc.	Uom
1	Flush	Mud Flush	SAPP	Surfactant	10.00	lb/bbl
1	Flush	Mud Flush	SS-201	Surfactant	0.50	gal/bbl
2	Scavenger	Scavenger	ASTM TYPE I/II	Cement	100.00	%
2	Scavenger	Scavenger	BA-60	GasMigration	0.30	%BWOB
2	Scavenger	Scavenger	FP-24	Defoamer	0.30	%BWOB
2	Scavenger	Scavenger	GW-86	Viscosifier	0.20	%BWOB
2	Scavenger	Scavenger	IntegraSeal PHENO	LostCirculation	3.00	lb/sk
2	Scavenger	Scavenger	R-3	Retarder	0.50	%BWOB
2	Scavenger	Scavenger	STATIC FREE	Other	0.01	lb/sk
3	Lead	Lead	ASTM TYPE I/II	Cement	100.00	%
3	Lead	Lead	BA-60	GasMigration	0.30	%BWOB
3	Lead	Lead	FL-66	FluidLoss	0.50	%BWOB
3	Lead	Lead	FP-24	Defoamer	0.30	%BWOB
3	Lead	Lead	GW-86	Viscosifier	0.10	%BWOB
3	Lead	Lead	IntegraSeal PHENO	LostCirculation	3.00	lb/sk
3	Lead	Lead	R-3	Retarder	0.30	%BWOB
3	Lead	Lead	STATIC FREE	Other	0.01	lb/sk
4	Tail	Tail	CLASS G	Cement	70.00	%
4	Tail	Tail	FLY ASH (POZZOLAN)	Extender	30.00	%
4	Tail	Tail	BA-60	GasMigration	0.20	%BWOB
4	Tail	Tail	BENTONITE	Viscosifier	8.00	%BWOB
4	Tail	Tail	FL-24	FluidLoss	0.40	%BWOB
4	Tail	Tail	FP-24	Defoamer	0.30	%BWOB



Fluid	Type	Fluid	Product	Function	Conc.	Uom
4	Tail	Tail	IntegraSeal PHENO	LostCirculation	3.00	lb/sk
4	Tail	Tail	R-3	Retarder	0.25	%BWOB
4	Tail	Tail	S-8	StrengthRetrogression	25.00	%BWOB

## Job Logs

Line	Event	Date (MM/DD/YY)	Time (HH:MM)	Density (lb/gal)	Pump Rate (bpm)	Pump Volume (bbls)	Pipe Pressure (psi)	Comment
1	Callout	9/12/2022	12:30					Yard call 13:30 20220912, on location 19:00
2	Depart For Location	9/12/2022	17:00					Leave Rifle yard for location
3	Arrive On Location	9/12/2022	18:48					Arrive on location, rig running casing
4	Spot Equipment	9/12/2022	18:50					Spot in all Equipment
5	Rig Up Iron	9/12/2022	19:00					Pre-rig up safety meeting, rig in all equipment and lines to standpipes
6	Waiting	9/12/2022	20:10					Waiting on rig to finish running casing
7	Safety Meeting	9/12/2022	22:50					Pre-job safety meeting with company man and rig crew
8	End Circulation	9/12/2022	23:00					Rig ended circulation. Circulated @ 10 BPM for 1 Hour, total of 600 BBLS
9	Rig Up Iron	9/12/2022	23:01					Rig up Cement head and lines on the floor
10	Pump Spacer	9/12/2022	23:07	8.34	6	5	203	Pumping freshwater spacer to load lines. No returns.
11	Pressure Test Lines	9/12/2022	23:09				5000	Pressure test
12	Pump Spacer	9/12/2022	23:12	8.45	5	20	211	Pumping mud flush spacer
13	Pump Scavenger	9/12/2022	23:18	11.5	5	0	328	Pumping scavenger. Pumping 850 CFM down parasite line
14	Pump Scavenger	9/12/2022	23:26	11.5	6	50	486	Pumping scavenger; Returns at 50 bbls
15	Pump Scavenger	9/12/2022	23:35	11.5	6	100	384	Pumping scavenger
16	Pump Scavenger	9/12/2022	23:37	11.5	6	116	354	Pumping scavenger
17	Pump Lead Cement	9/12/2022	23:38	12.7	6	0	527	Pumping lead cement.
18	Pump Lead Cement	9/12/2022	23:47	12.7	6	50	497	Pumping lead cement
19	Pump Lead Cement	9/12/2022	23:55	12.7	6	100	516	Pumping lead cement
20	Pump Lead Cement	9/13/2022	00:03	12.7	6	150	468	Pumping lead cement
21	Pump Lead Cement	9/13/2022	00:11	12.7	6	200	505	Pumping lead cement
22	Pump Lead Cement	9/13/2022	00:18	12.7	6	255	502	Pumping lead cement
23	Pump Tail Cement	9/13/2022	00:18	13.5	6	0	663	Pumping tail cement
24	Pump Tail Cement	9/13/2022	00:26	13.5	6	50	660	Pumping tail cement
25	Pump Tail Cement	9/13/2022	00:35	13.5	6	100	728	Pumping tail cement. Rig bypassed parasite air at 100 BBLS; Lost returns at 120 BBLS
26	Pump Tail Cement	9/13/2022	00:43	13.5	6	150	711	Pumping tail cement
27	Pump Tail Cement	9/13/2022	00:52	13.5	6	200	777	Pumping tail cement
28	Pump Tail Cement	9/13/2022	01:00	13.5	5	250	532	Pumping tail cement
29	Pump Tail Cement	9/13/2022	01:09	13.5	4	296	400	Pumping tail cement
30	Drop Top Plug	9/13/2022	01:11					Drop top plug verified by company man

Line	Event	Date (MM/DD/YY)	Time (HH:MM)	Density (lb/gal)	Pump Rate (bpm)	Pump Volume (bbls)	Pipe Pressure (psi)	Comment
31	Clean Pumps and Lines	9/13/2022	01:12					Clean pump and lines to 3-sided tank
32	Pump Displacement	9/13/2022	01:18		5	0	208	Pumping displacement, No returns
33	Pump Displacement	9/13/2022	01:25		6.5	50	428	Pumping displacement
34	Pump Displacement	9/13/2022	01:33		7	100	1215	Pumping displacement
35	Pump Displacement	9/13/2022	01:40		7	150	1981	Pumping displacement
36	Pump Displacement	9/13/2022	01:47		4	183	2093	Pumping displacement; Landed plug.
37	Land Plug	9/13/2022	01:47				2950	FCP 2093 PSI
38	Check Floats	9/13/2022	01:49					Bleed pressure, floats held. 2 BBLS bled back. Rig returned 334 BBLS Mud during cement job
39	Rig Down Iron	9/13/2022	01:55					Pre-rig down safety meeting, rig down cement head and lines on the floor.
40	Depart Location	9/13/2022	03:30					Leave location for Rifle shop

## Pump Diagrams

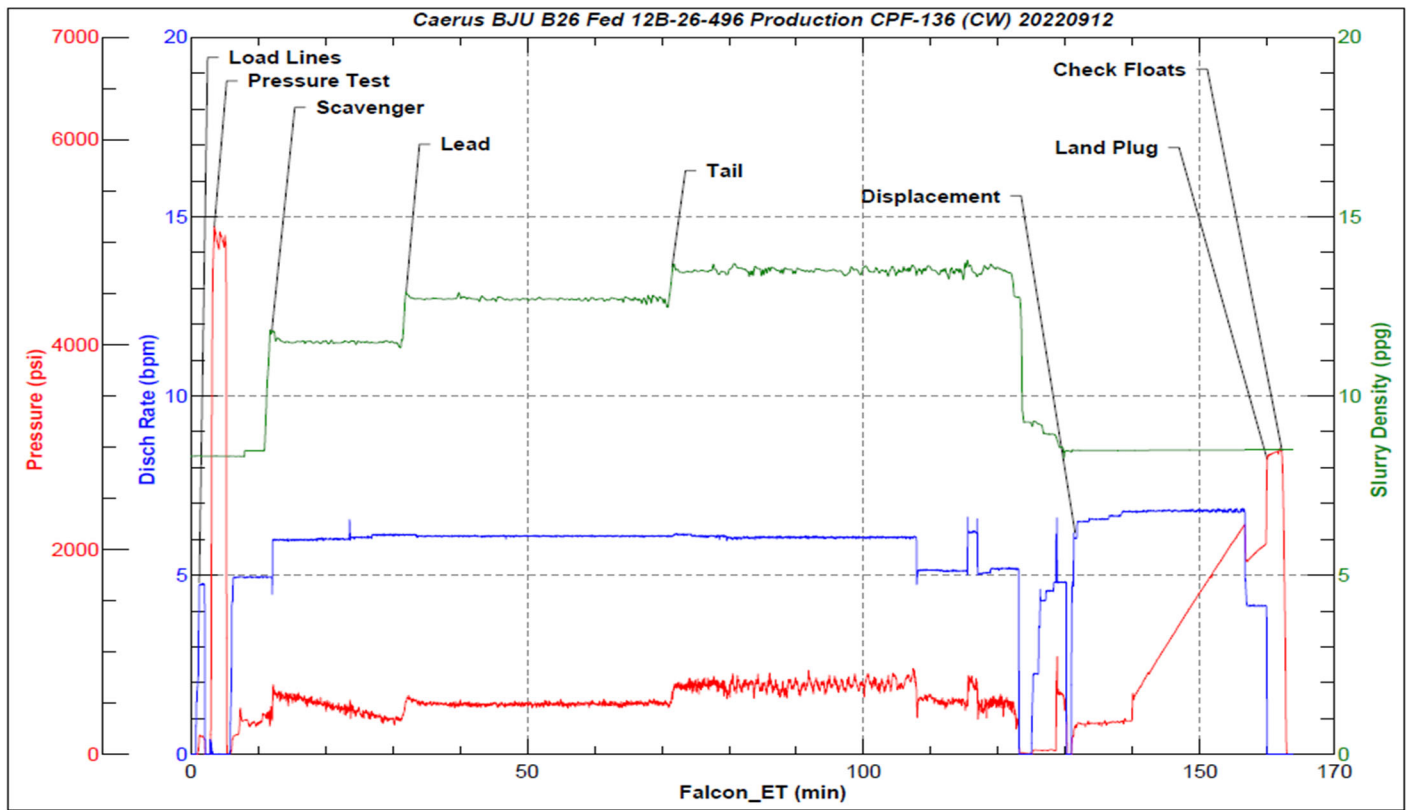


JobMaster Program Version 5.01C1

Job Number: 83456

Customer: Caerus

Well Name: BJU B26 Fed 12B-26-496



Job Start: Monday, September 12, 2022