

Project: Garfield County, CO
 Site: BJU B26 496 Pad
 Well: BJU B26 FED 12B-26 496
 Wellbore: Wellbore #1
 Design: Design #2
 Latitude: 39.677494
 Longitude: -108.137794
 Ground Level: 8211.0
 RKB @ 8241.0usft (30')

PROJECT DETAILS: Garfield County, CO

Geodetic System: Universal Transverse Mercator (US Survey Feet)
 Datum: NAD 1927 - Western US
 Ellipsoid: Clarke 1866
 Zone: Zone 12N (114 W to 108 W)
 System Datum: Mean Sea Level

REFERENCE INFORMATION

Vertical (TVD) Reference: RKB @ 8241.0usft (30')
 Section (VS) Reference: Slot - 12B-26(0.0N, 0.0E)
 Measured Depth Reference: RKB @ 8241.0usft (30')
 Calculation Method: Minimum Curvature

FORMATION TOP DETAILS

TVDPath	MDPath	Formation
3351.0	3373.8	Wasatch
5751.0	5791.8	Wasatch G
5798.0	5839.2	Top Injection Zone
6051.0	6093.7	Fort Union
6241.0	6283.8	Top Influx Sand
6332.0	6374.8	Bot Influx Sand
7832.0	7874.8	Bot Injection Zone
8064.0	8106.8	Ohio Creek / TOG
8356.0	8398.9	Williams Fork
11288.0	11331.9	Cameo
11788.0	11832.0	Rollins

SECTION DETAILS

MD	Inc	Azi	TVD	+N/-S	+E/-W	Dleg	TFace	VSec	Annotation
120.0	0.98	109.49	120.0	-0.1	1.0	0.00	0.00	-0.9	Conductor Tie In
184.2	1.00	262.81	184.2	-0.3	0.9	3.00	166.52	-0.9	EOB @ 1.00° Inc. / 262.81° Azm
200.0	1.00	262.81	200.0	-0.4	0.6	0.00	0.00	-0.6	Build 3° / 100'
400.1	7.00	262.81	399.5	-2.1	-13.2	3.00	0.00	13.4	EOB @ 7.00° Inc.
5983.4	7.00	262.81	5941.2	-87.4	-688.5	0.00	0.00	693.8	Drop 3° / 100'
6216.8	0.00	0.00	6174.0	-89.1	-702.7	3.00	180.00	708.0	EOD @ Vertical
8106.8	0.00	0.00	8064.0	-89.1	-702.7	0.00	0.00	708.0	Build 1.5° / 100'
8205.4	1.48	250.00	8162.5	-89.6	-703.9	1.50	250.00	709.3	EOB @ 1.48° Inc. / 250.00° Azm
12032.1	1.48	250.00	11988.0	-123.3	-796.6	0.00	0.00	806.1	TD @ 12032.1' MD / 11988.0' TVD

DESIGN TARGET DETAILS

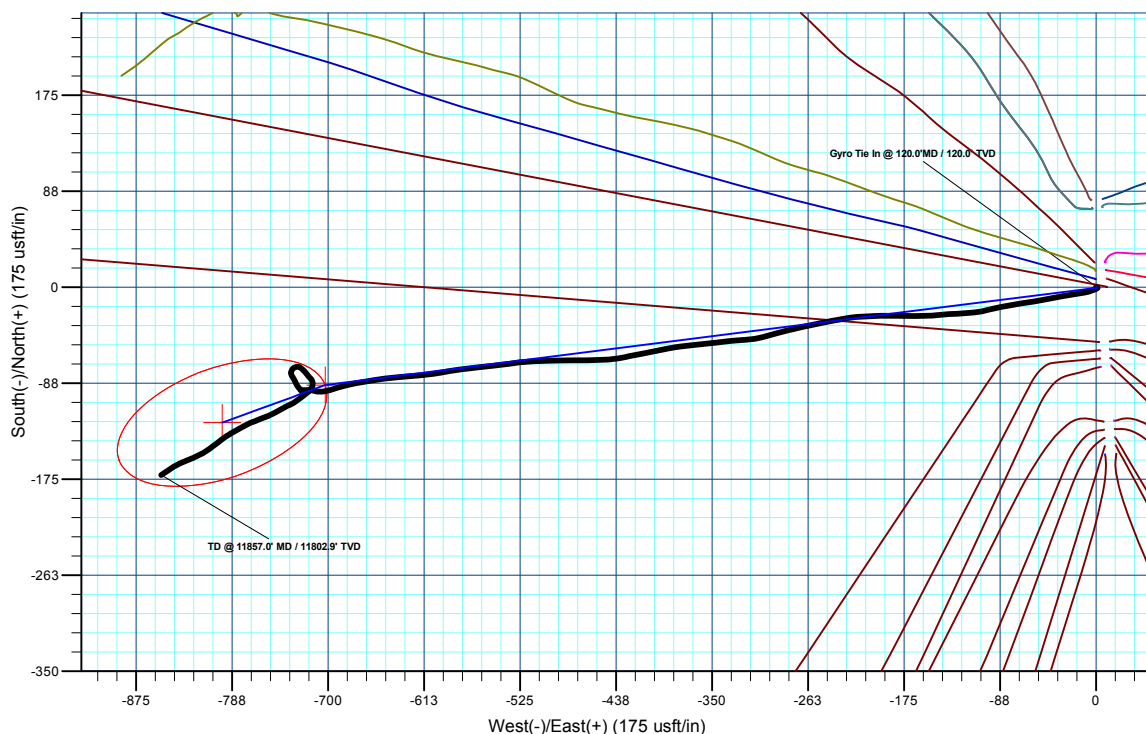
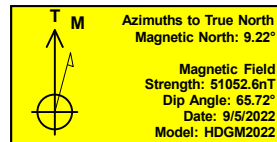
Name	TVD	+N/-S	+E/-W	Northing	Easting	Latitude	Longitude
12B-26 - OHC#064.0	-89.1	-702.7	14421350.79	2445122.43	39.677250	-108.140290	
12B-26 - PBHL#988.0	-123.3	-796.6	14421313.60	2445029.60	39.677156	-108.140623	

WELL DETAILS: BJU B26 FED 12B-26 496

Ground Level : 8211.0						
+N/-S	+E/-W	Northing	Easting	Latitude	Longitude	
0.0	0.0	14421462.30	2445821.90	39.677494	-108.137794	12B-26

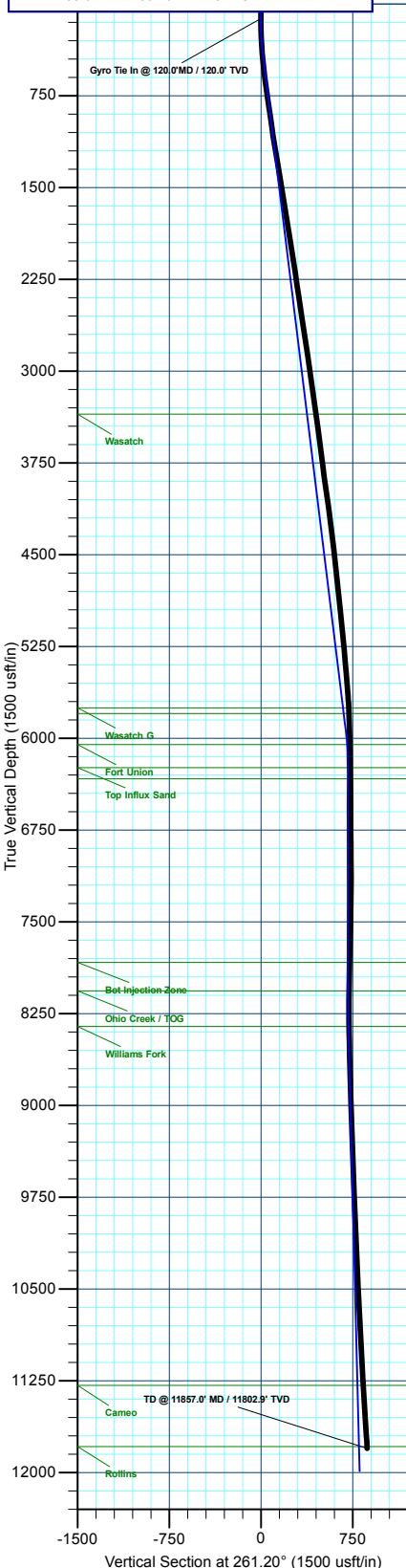
ANNOTATIONS

MD	Inc	Azi	TVD	+N/-S	+E/-W	VSec	Departure	Annotation
120.0	0.98	109.49	120.0	-0.1	1.0	-0.9	1.0	Gyro Tie In @ 120.0' MD / 120.0' TVD
11857.0	4.10	236.70	11802.9	-171.0	-852.0	869.0	953.2	TD @ 11857.0' MD / 11802.9' TVD



Plan: Design #2 (BJU B26 FED 12B-26 496/Wellbore #1)

Created By: Will Jircik Date: 5:15, September 12 2022





Caerus Oil & Gas

Garfield County, CO

BJU B26 496 Pad

BJU B26 FED 12B-26 496 - Slot 12B-26

Wellbore #1

Design: Wellbore #1

KLX Survey Report

12 September, 2022



Company:	Caerus Oil & Gas	Local Co-ordinate Reference:	Well BJU B26 FED 12B-26 496 - Slot 12B-26
Project:	Garfield County, CO	TVD Reference:	RKB @ 8241.0usft (30')
Site:	BJU B26 496 Pad	MD Reference:	RKB @ 8241.0usft (30')
Well:	BJU B26 FED 12B-26 496	North Reference:	True
Wellbore:	Wellbore #1	Survey Calculation Method:	Minimum Curvature
Design:	Wellbore #1	Database:	EDM 5000.1 Single User Db

Project	Garfield County, CO		
Map System:	Universal Transverse Mercator (US Survey Feet)	System Datum:	Mean Sea Level
Geo Datum:	NAD 1927 - Western US		
Map Zone:	Zone 12N (114 W to 108 W)		

Site		BJU B26 496 Pad							
Site Position:		Northing:	14,421,469.70	usft	Latitude:	39.677515			
From:	Map	Easting:	2,445,821.30	usft	Longitude:	-108.137796			
Position Uncertainty:		0.0	usft	Slot Radius:	13-3/16	"	Grid Convergence:	1.83	°

Well	BJU B26 FED 12B-26 496 - Slot 12B-26					
Well Position	+N/-S	0.0 usft	Northing:	14,421,462.30 usft	Latitude:	39.677494
	+E/-W	0.0 usft	Easting:	2,445,821.90 usft	Longitude:	-108.137794
Position Uncertainty		0.0 usft	Wellhead Elevation:	usft	Ground Level:	8,211.0 usft

Wellbore	Wellbore #1				
Magnetics	Model Name	Sample Date	Declination (°)	Dip Angle (°)	Field Strength (nT)
	HDGM2022	9/5/2022	9.22	65.72	51,052.60000000

Design	Wellbore #1				
Audit Notes:					
Version:	1.0	Phase:	ACTUAL	Tie On Depth:	0.0
Vertical Section:	Depth From (TVD) (usft)	+N/-S (usft)	+E/-W (usft)	Direction (°)	
	0.0	0.0	0.0	258.65	

Survey Program	Date	9/12/2022			
From (usft)	To (usft)	Survey (Wellbore)	Tool Name	Description	
30.0	120.0	Sfc Gyro (Wellbore #1)	GYRO-NS	OWSG Gyrocompass Gyro	
334.0	11,857.0	KLX MWD (Wellbore #1)	MWD	OWSG MWD - Standard	

Survey										
Measured Depth (usft)	Inclination (°)	Azimuth (°)	Vertical Depth (usft)	+N/-S (usft)	+E/-W (usft)	Vertical Section (usft)	Dogleg Rate (°/100usft)	Build Rate (°/100usft)	Turn Rate (°/100usft)	
0.0	0.00	0.00	0.0	0.0	0.0	0.0	0.00	0.00	0.00	
30.0	0.00	0.00	30.0	0.0	0.0	0.0	0.00	0.00	0.00	
60.0	0.61	83.67	60.0	0.0	0.2	-0.2	2.03	2.03	0.00	
90.0	0.77	96.26	90.0	0.0	0.5	-0.5	0.73	0.53	41.97	
Gyro Tie In @ 120.0'MD / 120.0' TVD										
120.0	0.98	109.49	120.0	-0.1	1.0	-0.9	0.97	0.70	44.10	
334.0	4.00	250.90	333.8	-3.1	-4.4	4.9	2.25	1.41	66.08	
420.0	5.10	259.00	419.6	-4.9	-11.0	11.7	1.48	1.28	9.42	
514.0	6.00	261.20	513.1	-6.4	-19.9	20.8	0.98	0.96	2.34	
609.0	7.10	259.70	607.5	-8.2	-30.6	31.6	1.17	1.16	-1.58	

Company:	Caerus Oil & Gas	Local Co-ordinate Reference:	Well BJU B26 FED 12B-26 496 - Slot 12B-26
Project:	Garfield County, CO	TVD Reference:	RKB @ 8241.0usft (30')
Site:	BJU B26 496 Pad	MD Reference:	RKB @ 8241.0usft (30')
Well:	BJU B26 FED 12B-26 496	North Reference:	True
Wellbore:	Wellbore #1	Survey Calculation Method:	Minimum Curvature
Design:	Wellbore #1	Database:	EDM 5000.1 Single User Db

Survey										
Measured Depth (usft)	Inclination (°)	Azimuth (°)	Vertical Depth (usft)	+N/-S (usft)	+E/-W (usft)	Vertical Section (usft)	Dogleg Rate (°/100usft)	Build Rate (°/100usft)	Turn Rate (°/100usft)	
703.0	7.90	260.10	700.7	-10.4	-42.7	43.9	0.85	0.85	0.43	
798.0	8.70	259.40	794.7	-12.8	-56.2	57.6	0.85	0.84	-0.74	
892.0	7.80	262.10	887.7	-15.0	-69.5	71.1	1.04	-0.96	2.87	
987.0	8.30	259.90	981.8	-17.1	-82.6	84.4	0.62	0.53	-2.32	
1,082.0	9.10	254.60	1,075.7	-20.3	-96.6	98.7	1.19	0.84	-5.58	
1,177.0	9.10	264.10	1,169.5	-23.0	-111.3	113.7	1.58	0.00	10.00	
1,271.0	9.30	268.20	1,262.3	-24.1	-126.3	128.6	0.73	0.21	4.36	
1,366.0	10.20	264.00	1,355.9	-25.2	-142.3	144.5	1.21	0.95	-4.42	
1,460.0	9.00	269.50	1,448.6	-26.1	-158.0	160.0	1.61	-1.28	5.85	
1,555.0	9.10	271.60	1,542.4	-26.0	-172.9	174.6	0.36	0.11	2.21	
1,649.0	10.10	268.50	1,635.1	-26.0	-188.6	190.0	1.20	1.06	-3.30	
1,744.0	8.90	268.70	1,728.8	-26.4	-204.3	205.5	1.26	-1.26	0.21	
1,839.0	8.50	265.50	1,822.7	-27.1	-218.6	219.7	0.66	-0.42	-3.37	
1,933.0	9.10	258.80	1,915.6	-29.1	-232.8	234.0	1.26	0.64	-7.13	
2,028.0	9.20	259.20	2,009.4	-31.9	-247.7	249.1	0.12	0.11	0.42	
2,122.0	9.40	257.30	2,102.2	-35.0	-262.5	264.3	0.39	0.21	-2.02	
2,217.0	8.70	258.10	2,196.0	-38.2	-277.1	279.2	0.75	-0.74	0.84	
2,312.0	8.30	252.40	2,289.9	-41.8	-290.7	293.2	0.98	-0.42	-6.00	
2,407.0	8.80	256.50	2,383.9	-45.6	-304.3	307.3	0.83	0.53	4.32	
2,501.0	8.70	266.10	2,476.8	-47.7	-318.4	321.5	1.56	-0.11	10.21	
2,595.0	7.80	264.70	2,569.8	-48.8	-331.8	334.9	0.98	-0.96	-1.49	
2,690.0	9.10	263.00	2,663.8	-50.3	-345.7	348.8	1.39	1.37	-1.79	
2,816.0	8.70	264.40	2,788.3	-52.4	-365.1	368.3	0.36	-0.32	1.11	
2,911.0	8.60	263.60	2,882.2	-53.9	-379.3	382.5	0.16	-0.11	-0.84	
2,981.0	8.10	257.50	2,951.5	-55.6	-389.3	392.6	1.45	-0.71	-8.71	
3,148.0	8.20	259.20	3,116.8	-60.4	-412.5	416.3	0.16	0.06	1.02	
3,242.0	8.10	260.50	3,209.8	-62.7	-425.6	429.6	0.22	-0.11	1.38	
3,337.0	7.80	258.90	3,303.9	-65.1	-438.5	442.8	0.39	-0.32	-1.68	
3,432.0	7.90	270.00	3,398.0	-66.3	-451.4	455.6	1.60	0.11	11.68	
3,526.0	7.80	269.60	3,491.1	-66.3	-464.2	468.2	0.12	-0.11	-0.43	
3,620.0	7.20	268.60	3,584.3	-66.5	-476.5	480.3	0.65	-0.64	-1.06	
3,715.0	7.50	269.90	3,678.6	-66.7	-488.6	492.2	0.36	0.32	1.37	
3,809.0	7.10	267.60	3,771.8	-66.9	-500.6	504.0	0.53	-0.43	-2.45	
3,904.0	8.10	267.50	3,866.0	-67.5	-513.1	516.4	1.05	1.05	-0.11	
3,999.0	7.90	263.10	3,960.0	-68.6	-526.3	529.5	0.68	-0.21	-4.63	
4,094.0	8.00	262.30	4,054.1	-70.2	-539.3	542.6	0.16	0.11	-0.84	
4,188.0	7.70	264.10	4,147.2	-71.8	-552.1	555.4	0.41	-0.32	1.91	
4,283.0	7.40	264.20	4,241.4	-73.0	-564.5	567.8	0.32	-0.32	0.11	
4,378.0	7.00	262.00	4,335.7	-74.4	-576.3	579.7	0.51	-0.42	-2.32	
4,472.0	6.60	261.70	4,429.0	-76.0	-587.3	590.8	0.43	-0.43	-0.32	
4,567.0	5.50	258.20	4,523.5	-77.7	-597.2	600.8	1.22	-1.16	-3.68	
4,661.0	6.30	263.90	4,617.0	-79.2	-606.7	610.5	1.05	0.85	6.06	
4,756.0	6.50	264.10	4,711.4	-80.3	-617.3	621.0	0.21	0.21	0.21	

Company:	Caerus Oil & Gas	Local Co-ordinate Reference:	Well BJU B26 FED 12B-26 496 - Slot 12B-26
Project:	Garfield County, CO	TVD Reference:	RKB @ 8241.0usft (30')
Site:	BJU B26 496 Pad	MD Reference:	RKB @ 8241.0usft (30')
Well:	BJU B26 FED 12B-26 496	North Reference:	True
Wellbore:	Wellbore #1	Survey Calculation Method:	Minimum Curvature
Design:	Wellbore #1	Database:	EDM 5000.1 Single User Db

Survey									
Measured Depth (usft)	Inclination (°)	Azimuth (°)	Vertical Depth (usft)	+N/-S (usft)	+E/-W (usft)	Vertical Section (usft)	Dogleg Rate (°/100usft)	Build Rate (°/100usft)	Turn Rate (°/100usft)
4,850.0	6.50	265.20	4,804.8	-81.3	-627.9	631.6	0.13	0.00	1.17
4,945.0	6.20	264.60	4,899.2	-82.2	-638.3	642.0	0.32	-0.32	-0.63
5,040.0	5.80	263.40	4,993.7	-83.3	-648.2	651.9	0.44	-0.42	-1.26
5,134.0	5.50	262.90	5,087.2	-84.4	-657.4	661.1	0.32	-0.32	-0.53
5,323.0	5.20	257.10	5,275.4	-87.4	-674.7	678.7	0.33	-0.16	-3.07
5,418.0	4.70	258.10	5,370.0	-89.2	-682.7	686.9	0.53	-0.53	1.05
5,512.0	5.00	251.80	5,463.7	-91.3	-690.4	694.8	0.65	0.32	-6.70
5,607.0	5.00	253.80	5,558.4	-93.7	-698.3	703.1	0.18	0.00	2.11
5,702.0	4.10	264.20	5,653.1	-95.2	-705.6	710.6	1.28	-0.95	10.95
5,797.0	2.00	289.70	5,747.9	-95.0	-710.6	715.4	2.58	-2.21	26.84
5,892.0	2.10	279.20	5,842.9	-94.1	-713.9	718.4	0.41	0.11	-11.05
5,986.0	1.80	274.40	5,936.8	-93.8	-717.0	721.5	0.36	-0.32	-5.11
6,081.0	1.60	267.40	6,031.8	-93.7	-719.9	724.2	0.30	-0.21	-7.37
6,176.0	1.80	267.50	6,126.7	-93.8	-722.7	727.0	0.21	0.21	0.11
6,270.0	0.50	256.90	6,220.7	-94.0	-724.5	728.9	1.40	-1.38	-11.28
6,365.0	0.40	322.90	6,315.7	-93.8	-725.1	729.4	0.52	-0.11	69.47
6,459.0	0.70	323.70	6,409.7	-93.1	-725.7	729.8	0.32	0.32	0.85
6,554.0	0.60	335.70	6,504.7	-92.2	-726.2	730.2	0.18	-0.11	12.63
6,649.0	1.00	302.10	6,599.7	-91.3	-727.1	730.9	0.63	0.42	-35.37
6,743.0	1.40	340.00	6,693.7	-89.8	-728.2	731.7	0.92	0.43	40.32
6,838.0	1.90	332.10	6,788.6	-87.3	-729.4	732.3	0.58	0.53	-8.32
6,932.0	1.90	332.70	6,882.6	-84.5	-730.8	733.1	0.02	0.00	0.64
7,027.0	1.70	326.10	6,977.5	-81.9	-732.3	734.1	0.30	-0.21	-6.95
7,121.0	1.50	336.20	7,071.5	-79.7	-733.6	734.9	0.37	-0.21	10.74
7,216.0	1.00	9.80	7,166.5	-77.7	-733.9	734.9	0.91	-0.53	35.37
7,310.0	1.20	27.70	7,260.4	-76.0	-733.4	734.0	0.42	0.21	19.04
7,405.0	1.20	30.70	7,355.4	-74.3	-732.4	732.7	0.07	0.00	3.16
7,500.0	1.40	71.50	7,450.4	-73.1	-730.8	730.9	0.97	0.21	42.95
7,594.0	1.60	73.30	7,544.4	-72.3	-728.4	728.4	0.22	0.21	1.91
7,689.0	1.70	122.10	7,639.3	-72.7	-726.0	726.1	1.44	0.11	51.37
7,784.0	2.00	135.40	7,734.3	-74.6	-723.6	724.1	0.55	0.32	14.00
7,878.0	1.90	136.60	7,828.2	-76.9	-721.4	722.4	0.11	-0.11	1.28
7,973.0	2.00	142.60	7,923.2	-79.4	-719.3	720.9	0.24	0.11	6.32
8,067.0	2.00	135.60	8,017.1	-81.9	-717.1	719.2	0.26	0.00	-7.45
8,162.0	1.80	141.20	8,112.1	-84.2	-715.1	717.6	0.29	-0.21	5.89
8,257.0	2.10	180.00	8,207.0	-87.1	-714.1	717.3	1.40	0.32	40.84
8,351.0	1.40	190.00	8,301.0	-90.0	-714.3	718.1	0.81	-0.74	10.64
8,446.0	1.30	221.00	8,395.9	-91.9	-715.2	719.3	0.77	-0.11	32.63
8,540.0	1.30	213.00	8,489.9	-93.6	-716.5	720.9	0.19	0.00	-8.51
8,635.0	1.30	232.60	8,584.9	-95.2	-718.0	722.6	0.47	0.00	20.63
8,730.0	1.80	232.60	8,679.9	-96.7	-720.0	725.0	0.53	0.53	0.00
8,825.0	2.10	230.60	8,774.8	-98.7	-722.5	727.8	0.32	0.32	-2.11
8,919.0	1.80	232.40	8,868.8	-100.7	-725.0	730.7	0.33	-0.32	1.91

Company:	Caerus Oil & Gas	Local Co-ordinate Reference:	Well BJU B26 FED 12B-26 496 - Slot 12B-26
Project:	Garfield County, CO	TVD Reference:	RKB @ 8241.0usft (30')
Site:	BJU B26 496 Pad	MD Reference:	RKB @ 8241.0usft (30')
Well:	BJU B26 FED 12B-26 496	North Reference:	True
Wellbore:	Wellbore #1	Survey Calculation Method:	Minimum Curvature
Design:	Wellbore #1	Database:	EDM 5000.1 Single User Db

Survey										
Measured Depth (usft)	Inclination (°)	Azimuth (°)	Vertical Depth (usft)	+N/-S (usft)	+E/-W (usft)	Vertical Section (usft)	Dogleg Rate (°/100usft)	Build Rate (°/100usft)	Turn Rate (°/100usft)	
9,014.0	1.80	230.40	8,963.7	-102.6	-727.4	733.3	0.07	0.00	-2.11	
9,108.0	2.20	240.60	9,057.6	-104.4	-730.1	736.3	0.57	0.43	10.85	
9,203.0	2.20	240.20	9,152.6	-106.2	-733.2	739.8	0.02	0.00	-0.42	
9,298.0	2.50	246.60	9,247.5	-108.0	-736.7	743.6	0.42	0.32	6.74	
9,393.0	2.50	239.50	9,342.4	-109.8	-740.4	747.5	0.33	0.00	-7.47	
9,487.0	2.00	243.10	9,436.3	-111.6	-743.6	751.1	0.55	-0.53	3.83	
9,582.0	1.60	240.00	9,531.3	-113.0	-746.3	753.9	0.43	-0.42	-3.26	
9,676.0	2.00	240.90	9,625.2	-114.5	-748.8	756.7	0.43	0.43	0.96	
9,771.0	2.20	245.00	9,720.2	-116.1	-751.9	760.1	0.26	0.21	4.32	
9,866.0	2.50	248.90	9,815.1	-117.6	-755.5	763.9	0.36	0.32	4.11	
9,961.0	2.50	249.70	9,910.0	-119.0	-759.4	768.0	0.04	0.00	0.84	
10,055.0	2.50	246.80	10,003.9	-120.6	-763.2	772.0	0.13	0.00	-3.09	
10,150.0	2.30	249.20	10,098.8	-122.1	-766.9	775.9	0.24	-0.21	2.53	
10,244.0	2.50	246.80	10,192.8	-123.5	-770.5	779.8	0.24	0.21	-2.55	
10,338.0	2.70	241.90	10,286.7	-125.4	-774.4	783.9	0.32	0.21	-5.21	
10,433.0	2.90	243.20	10,381.5	-127.5	-778.5	788.4	0.22	0.21	1.37	
10,528.0	3.30	242.30	10,476.4	-129.9	-783.1	793.3	0.42	0.42	-0.95	
10,622.0	3.30	239.30	10,570.2	-132.5	-787.8	798.5	0.18	0.00	-3.19	
10,717.0	3.10	236.60	10,665.1	-135.3	-792.3	803.4	0.26	-0.21	-2.84	
10,812.0	3.20	232.60	10,760.0	-138.3	-796.5	808.2	0.25	0.11	-4.21	
10,906.0	3.30	231.50	10,853.8	-141.6	-800.7	812.9	0.13	0.11	-1.17	
11,001.0	3.10	234.40	10,948.7	-144.8	-805.0	817.7	0.27	-0.21	3.05	
11,096.0	3.60	233.30	11,043.5	-148.1	-809.4	822.8	0.53	0.53	-1.16	
11,190.0	3.50	241.30	11,137.3	-151.2	-814.3	828.2	0.54	-0.11	8.51	
11,285.0	3.20	245.10	11,232.1	-153.8	-819.3	833.5	0.39	-0.32	4.00	
11,379.0	3.50	247.70	11,326.0	-155.9	-824.3	838.9	0.36	0.32	2.77	
11,474.0	3.80	248.10	11,420.8	-158.2	-829.9	844.8	0.32	0.32	0.42	
11,569.0	3.80	244.30	11,515.6	-160.8	-835.7	851.0	0.27	0.00	-4.00	
11,663.0	3.70	238.40	11,609.4	-163.7	-841.1	856.8	0.42	-0.11	-6.28	
11,758.0	3.80	234.70	11,704.2	-167.1	-846.2	862.6	0.28	0.11	-3.89	
11,797.0	4.10	236.70	11,743.1	-168.6	-848.5	865.0	0.85	0.77	5.13	
TD @ 11857.0' MD / 11802.9' TVD										
11,857.0	4.10	236.70	11,802.9	-171.0	-852.0	869.0	0.00	0.00	0.00	

Design Annotations					
Measured Depth (usft)	Vertical Depth (usft)	Local Coordinates			
		+N/-S (usft)	+E/-W (usft)	Comment	
120.0	120.0	-0.1	1.0	Gyro Tie In @ 120.0'MD / 120.0' TVD	
11,857.0	11,802.9	-171.0	-852.0	TD @ 11857.0' MD / 11802.9' TVD	

Checked By: _____ Approved By: _____ Date: _____