



Compensated Neutron  
Gamma Ray  
Casing Collar Log

Company	Caerus Piceance LLC.	Country	USA
Well	BJU B26 Fed 11D-26-496		
Field	Grand Valley		
County	Garfield		
State	Colorado		
Location:	SEC 26 TWP 4S RGE 96W	API # : 05-045-24459	Other Services
Permanent Datum	Ground Level	Elevation	8211'
Log Measured From	Kelly Bushing		
Drilling Measured From	Kelly Bushing		
		RCBL	
		Elevation	K.B. 8241' D.F. 8240' G.L. 8211'

Date	11-OCT-2022
Run Number	One
Depth Driller	12054 FT
Depth Logger	11922 FT
Bottom Logged Interval	11922 FT
Top Log Interval	7550'
Open Hole Size	8.750"
Type Fluid	Fresh Water
Density / Viscosity	8.34 lb/gal
Max. Recorded Temp.	---
Estimated Cement Top	---
Time Well Ready	ROA
Time Logger on Bottom	10:28
Equipment Number	8053
Location	Grand Junction Colo
Recorded By	P. Edwards
Witnessed By	Z. Fisher

Borehole Record				Tubing Record			
Run Number	Bit	From	To	Size	Weight	From	To
	8.75"	Surface	12054 FT				
Casing Record	Size		Mgd/Ft		Top		Bottom
Surface String	9.625"		36		Surface		3020.4 FT
Prot. String	4.5"		11.6		Surface		12033.8 FT
Production String							
Liner							

<<< Fold Here >>>

All interpretations are opinions based on inferences from electrical or other measurements and we cannot and do not guarantee the accuracy or correctness of any interpretation, and we shall not, except in the case of gross or willful negligence on our part, be liable or responsible for any loss, costs, damages, or expenses incurred or sustained by anyone resulting from any interpretation made by any of our officers, agents or employees. These interpretations are also subject to our general terms and conditions set out in our current Price Schedule.

Comments

Log ran as per customer request.  
Depth referenced to Kelly Bushing @ 30FT  
Marker Joint from 8002 FT - 8012 FT  
Log ran from 11922 FT to 7550 FT  
Log ran with 0 PSI surface induced pressure.

Thank you for choosing The Wireline Group!!!

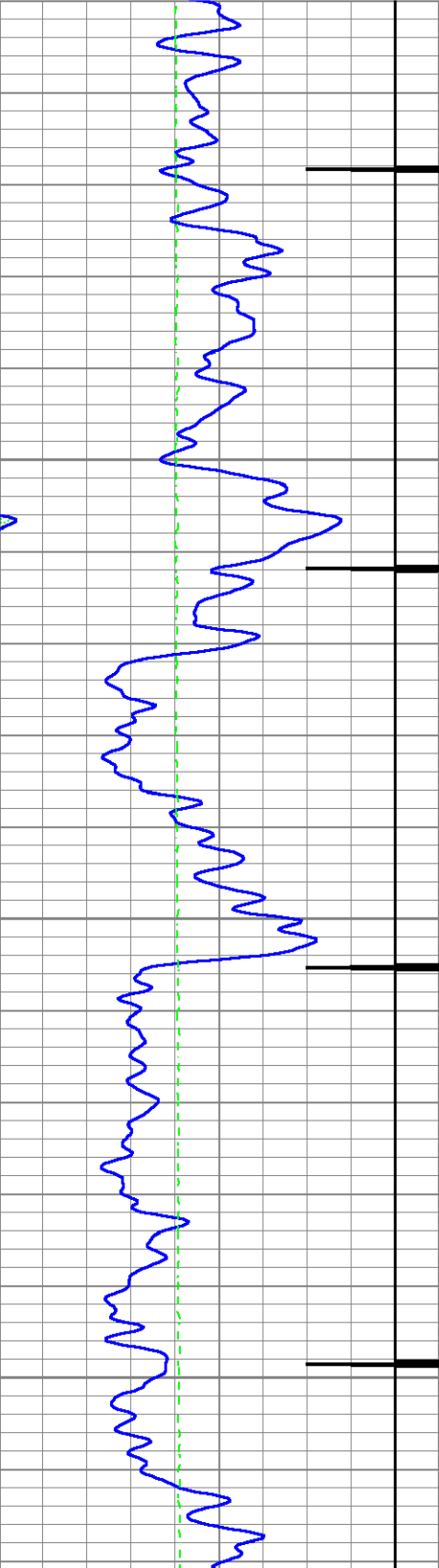


Main Pass 5" = 100'

Database File caerus\_bju b26 fed 11d-26-496\_rcbl\_cnl\_10-10-2022.db  
Dataset Pathname main1  
Presentation Format twg\_cnl  
Dataset Creation Tue Oct 11 10:28:16 2022  
Charted by Depth in Feet scaled 1:240

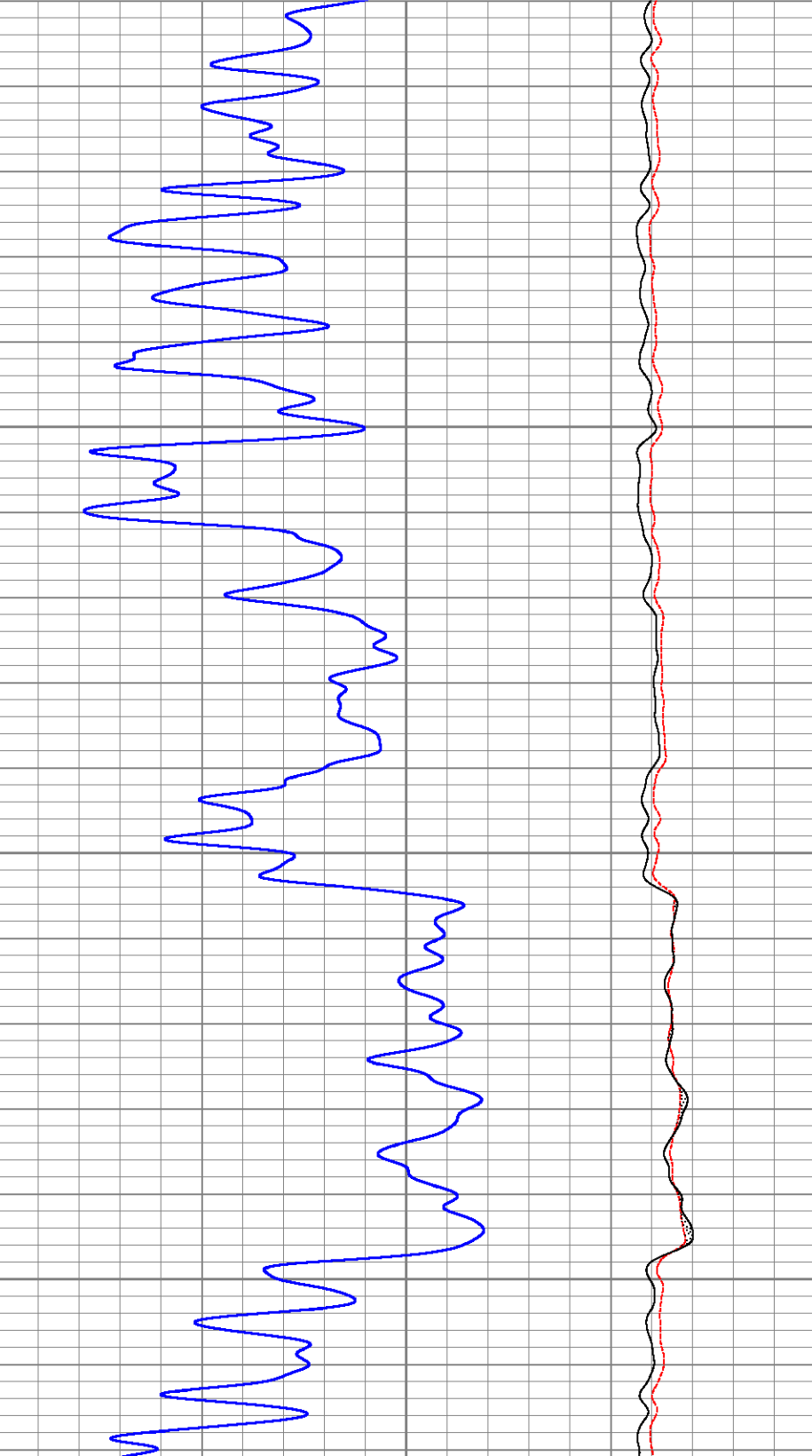
0	GR (GAPI)	200
9	CCL	-1
0	Line Tension (lb)	4000

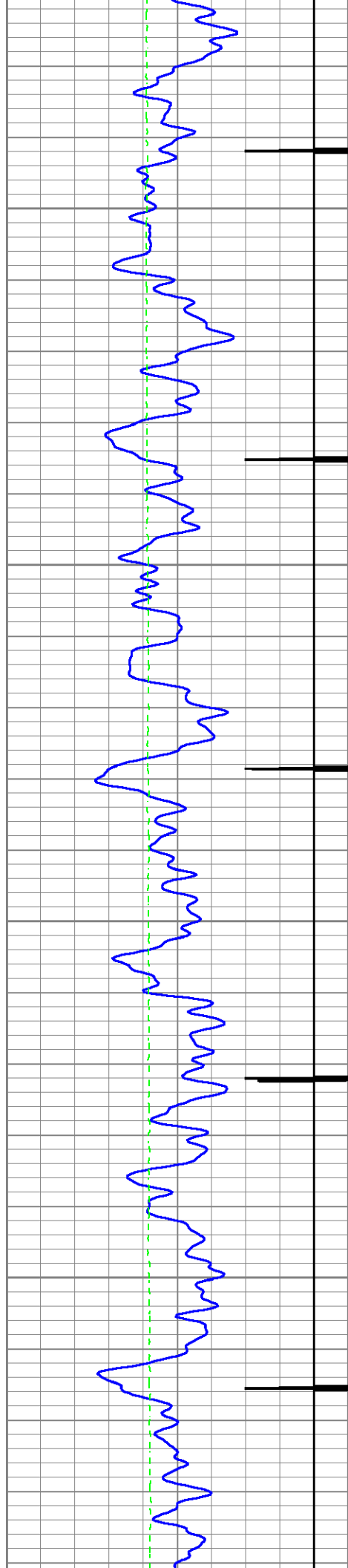
0.3	CNPOR (pu)	-0.1
0	CNLSC (cps)	1500
0	CNSSC (cps)	7000



7600

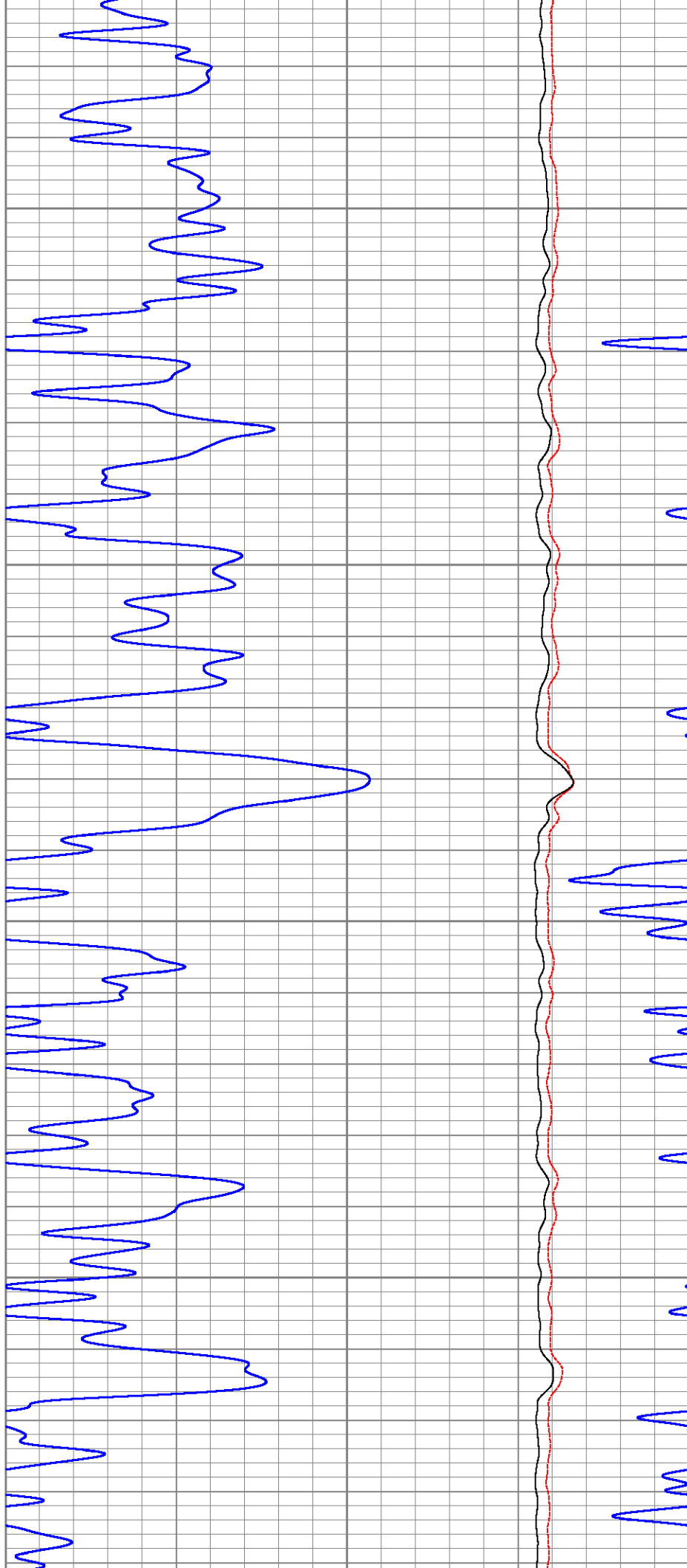
7700

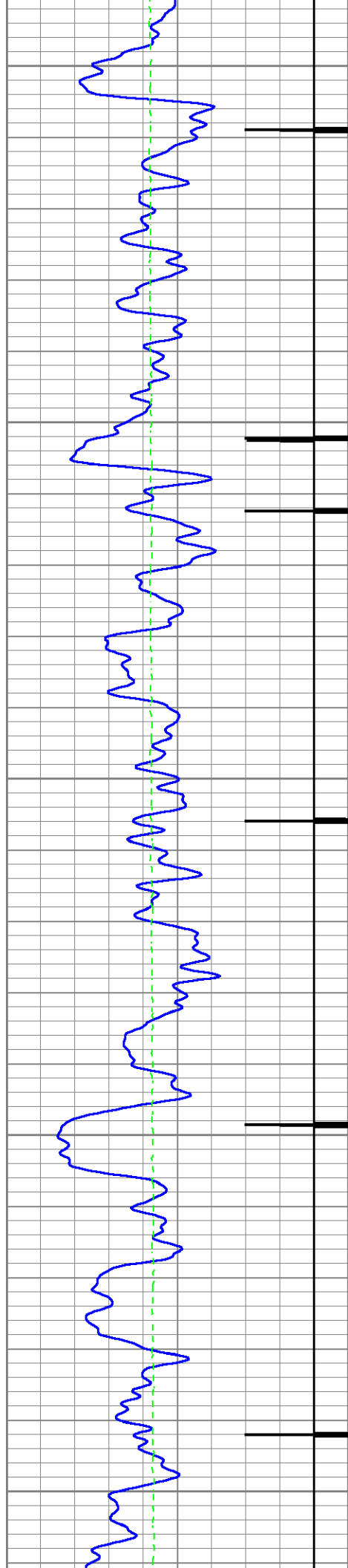




7800

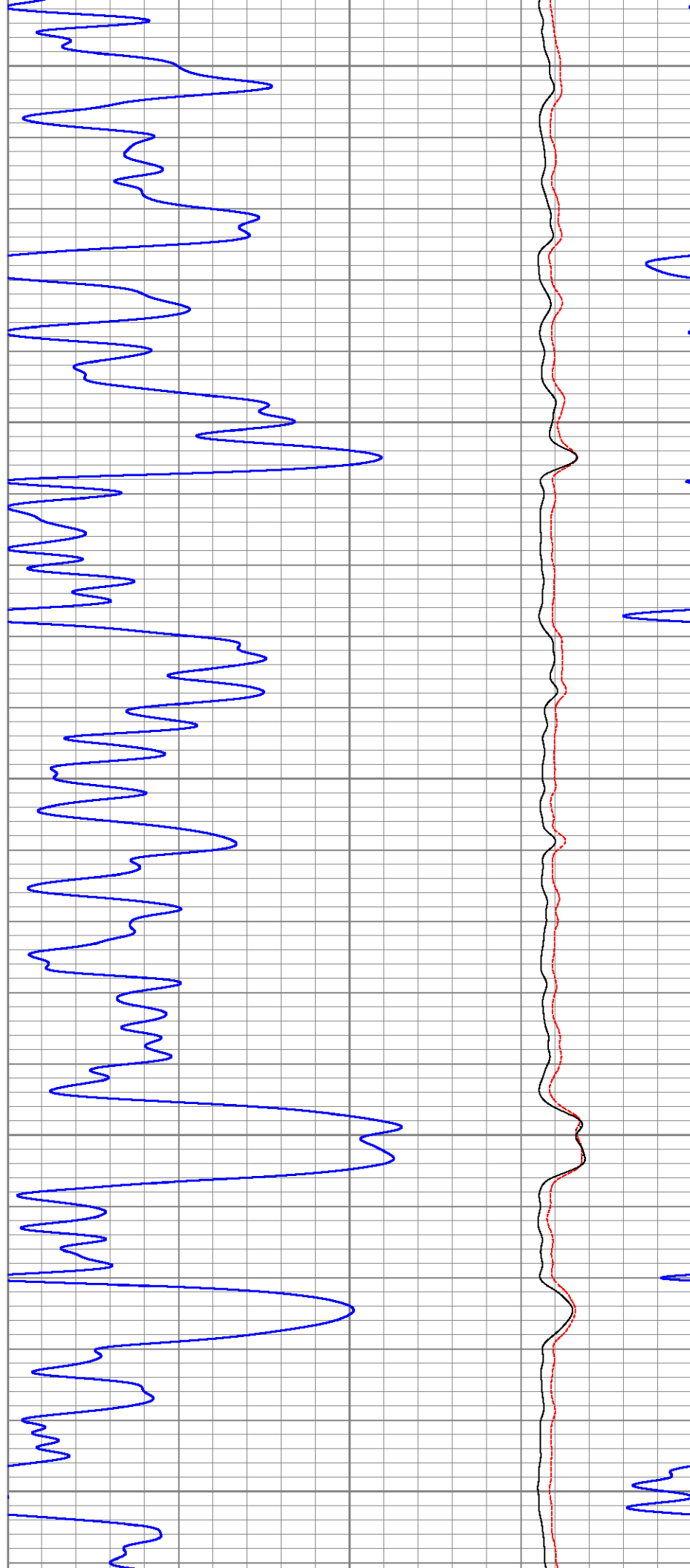
7900

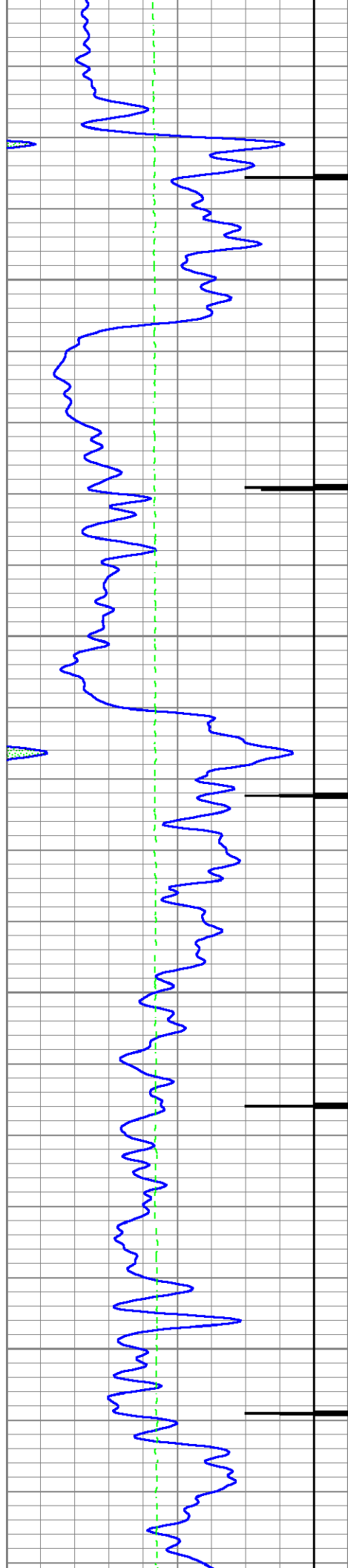




8000

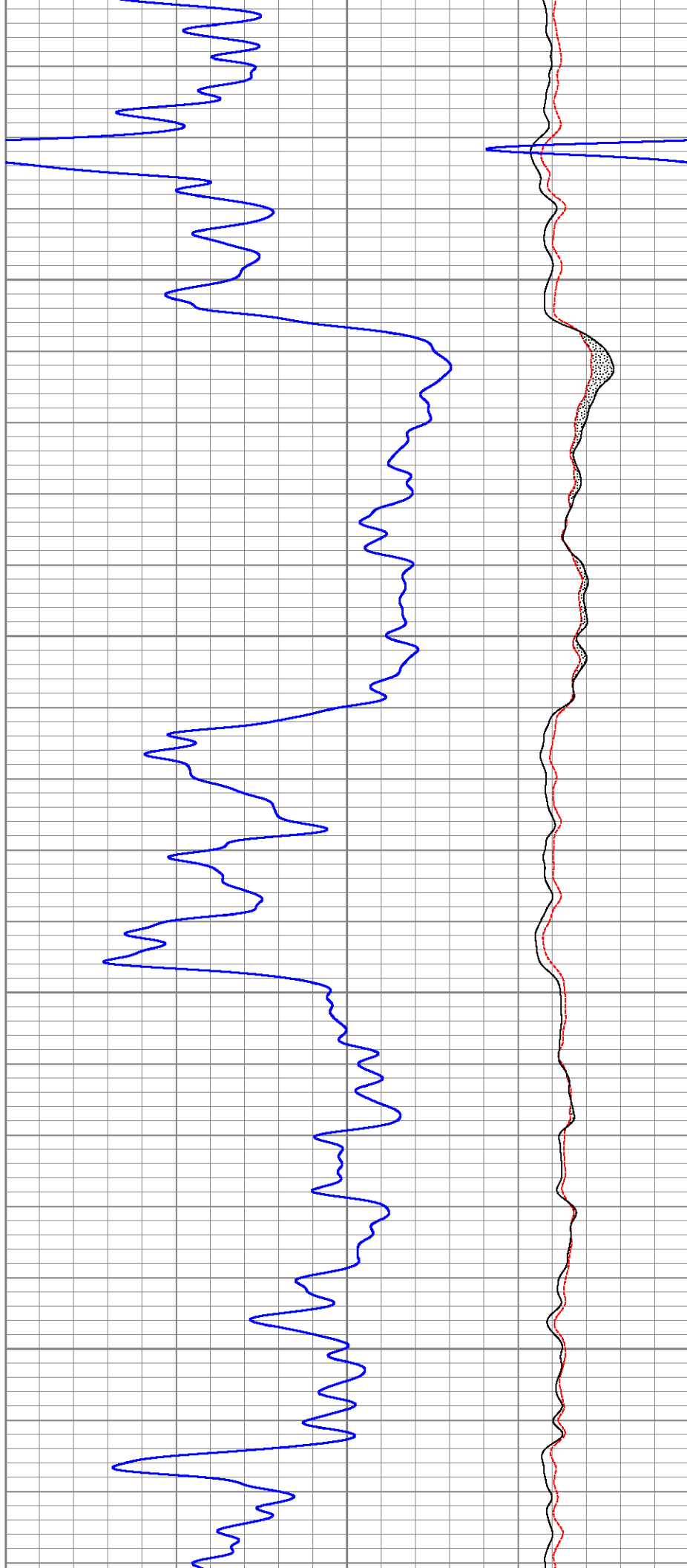
8100

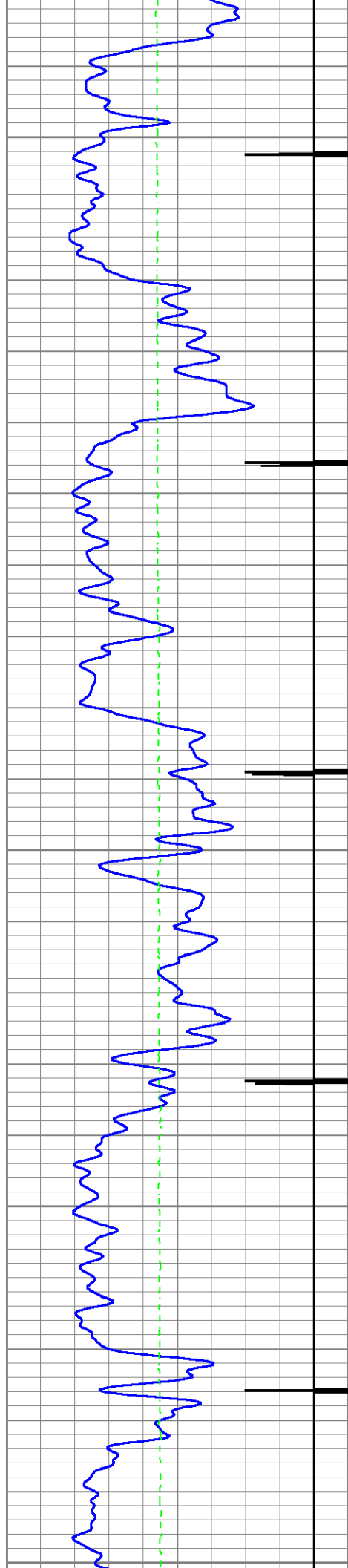




8200

8300

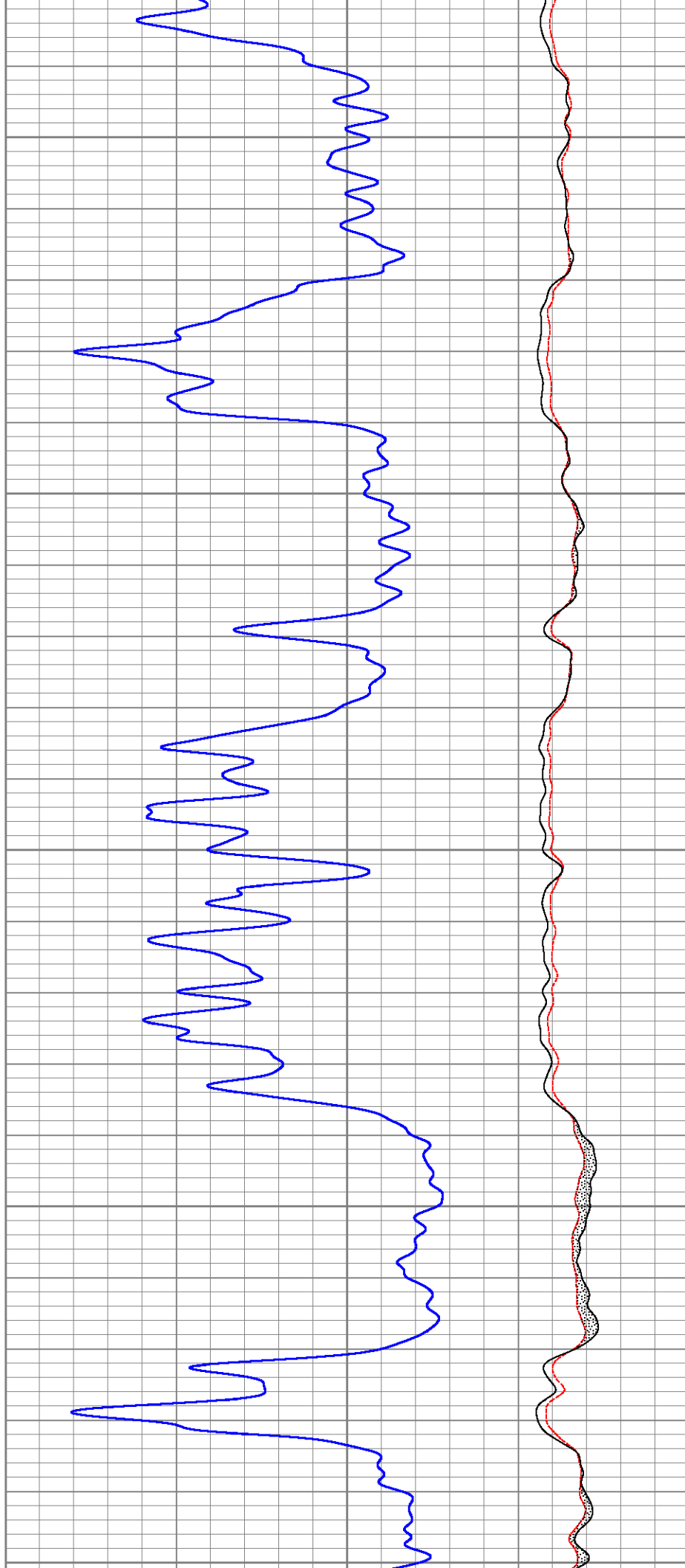


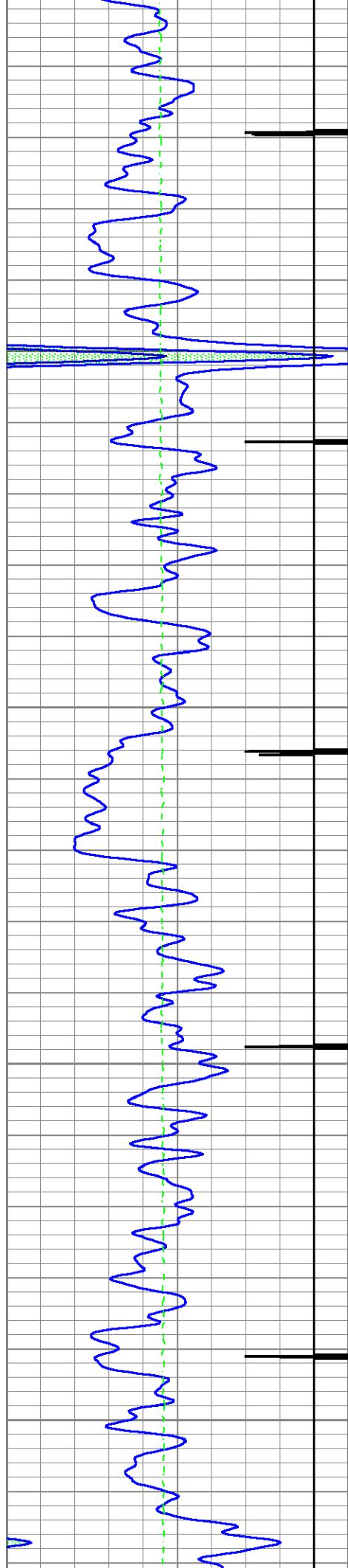


8400

8500

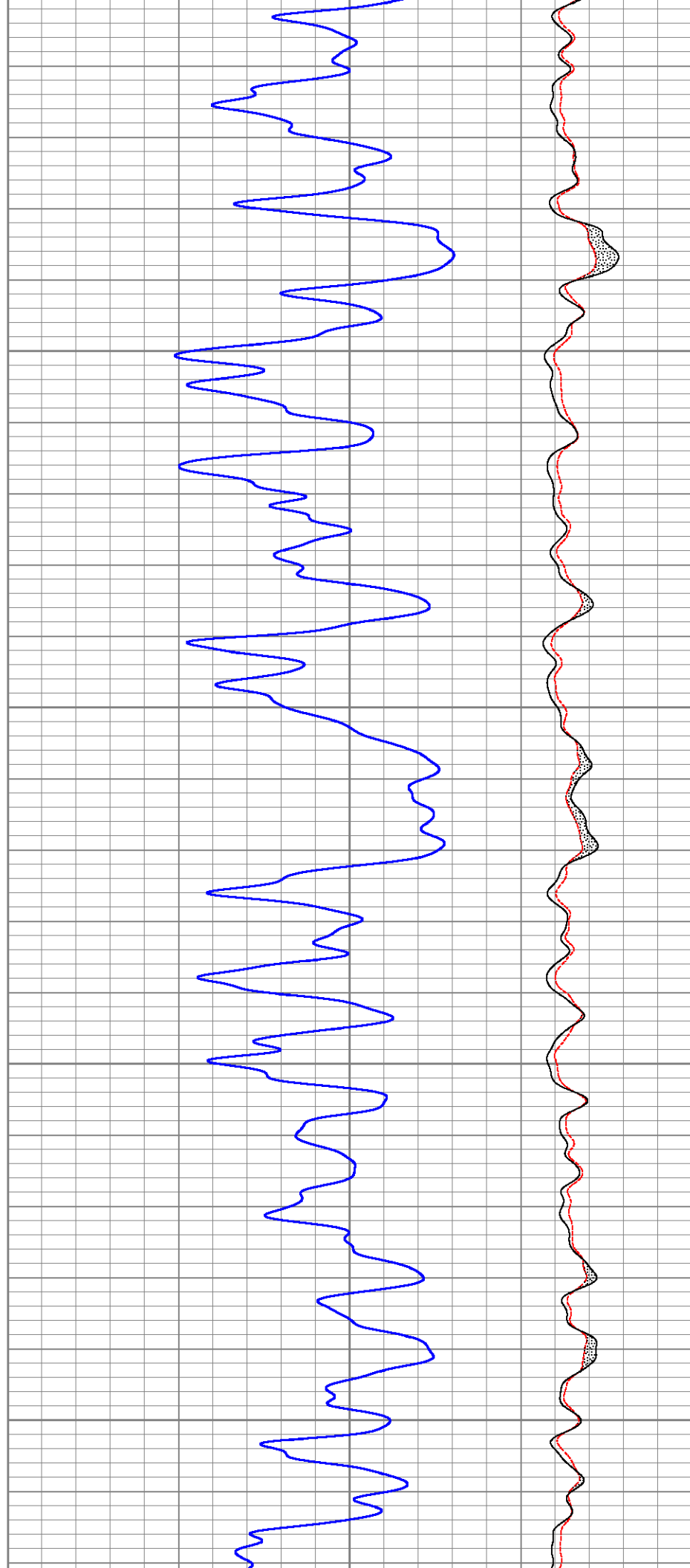
8600

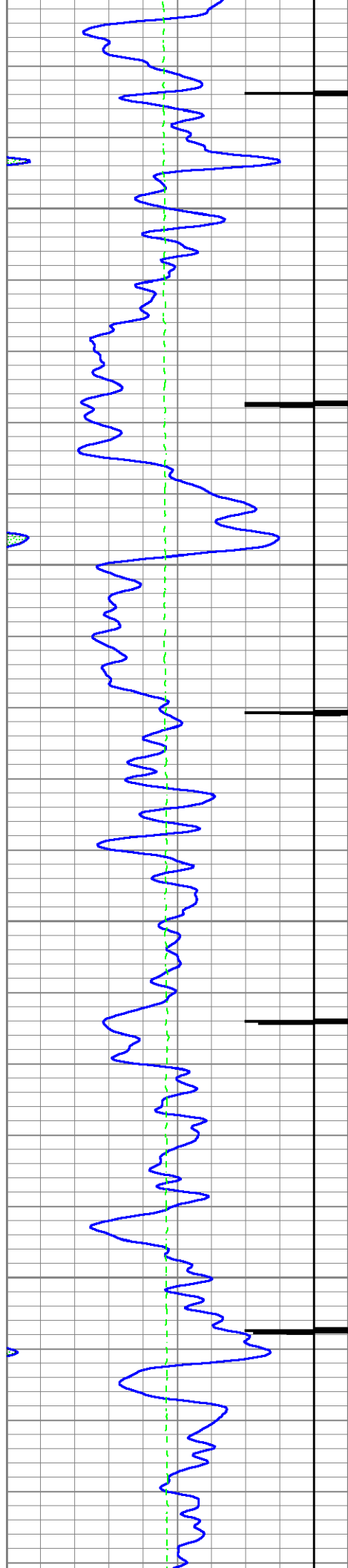




8700

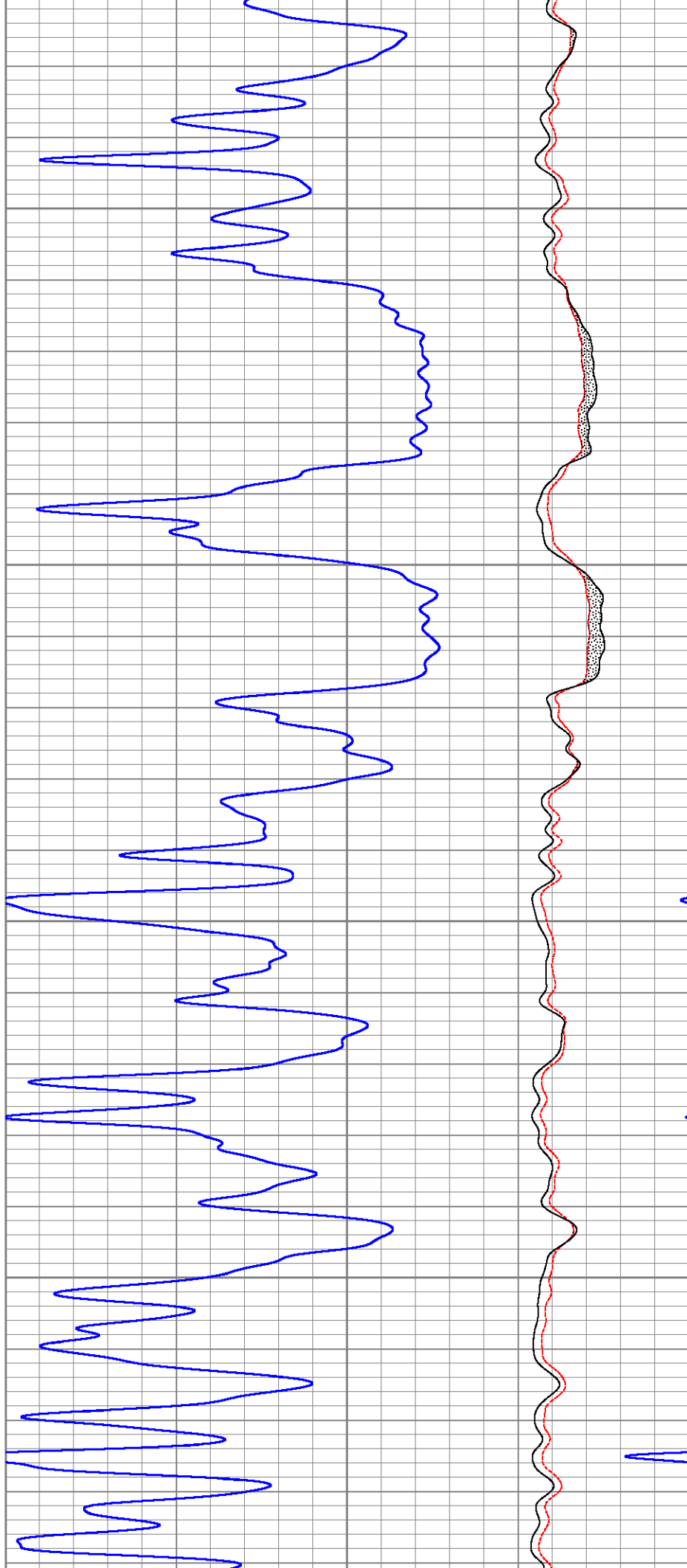
8800



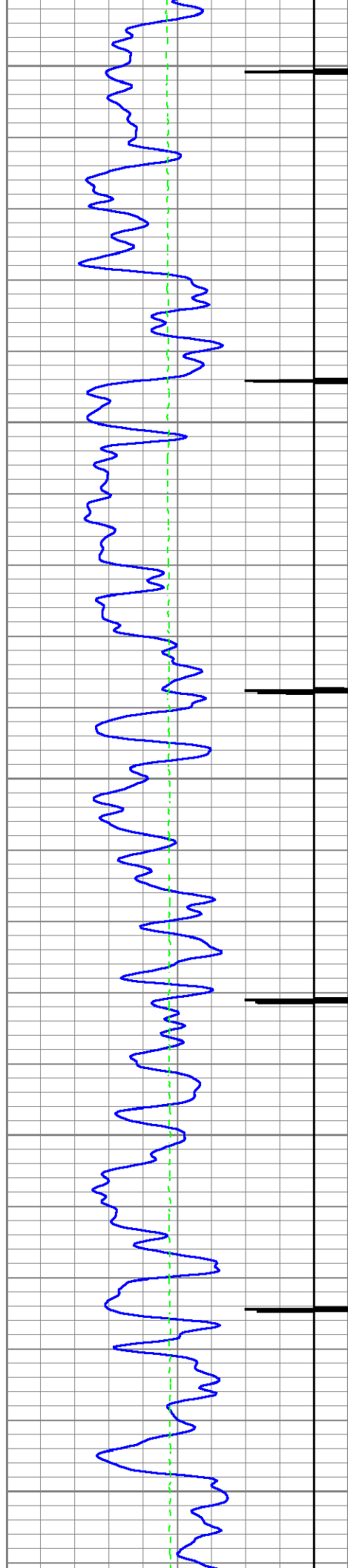


8900

9000

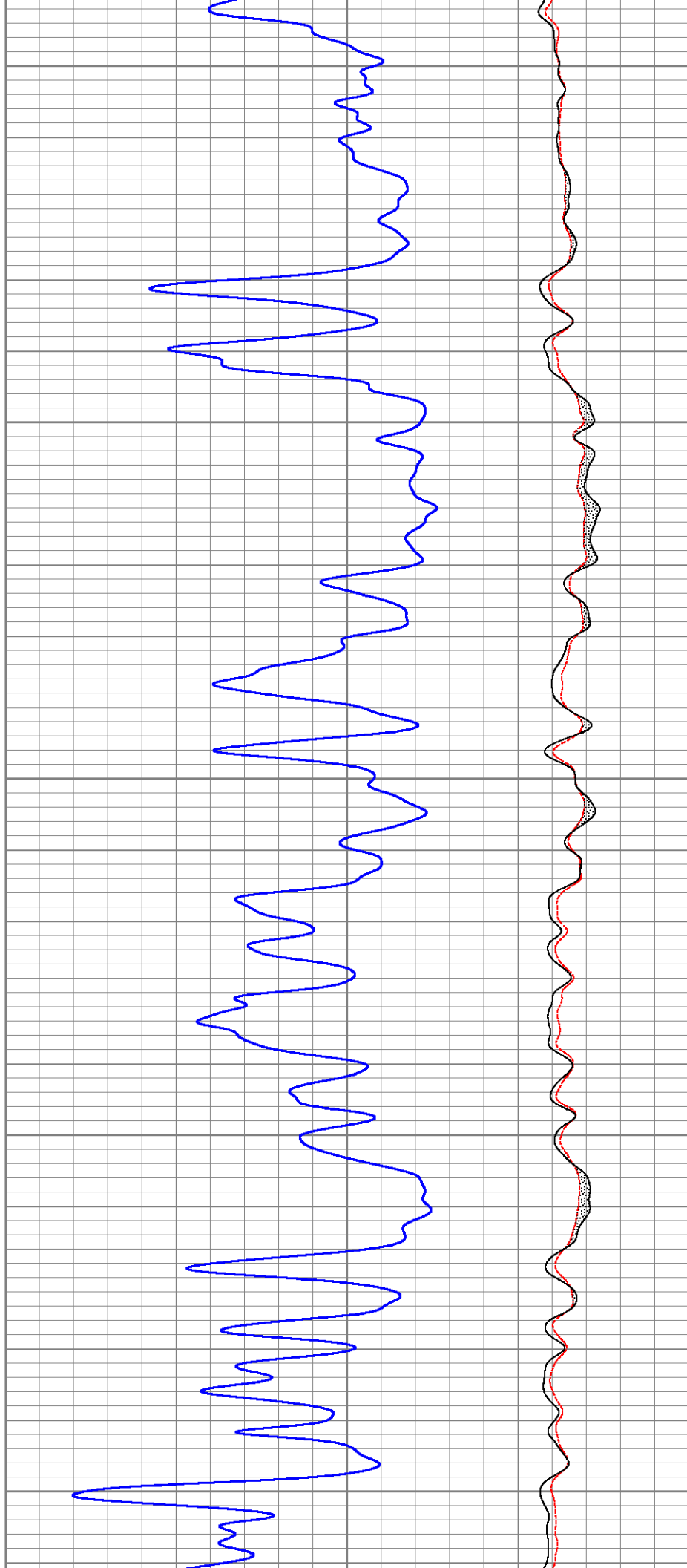


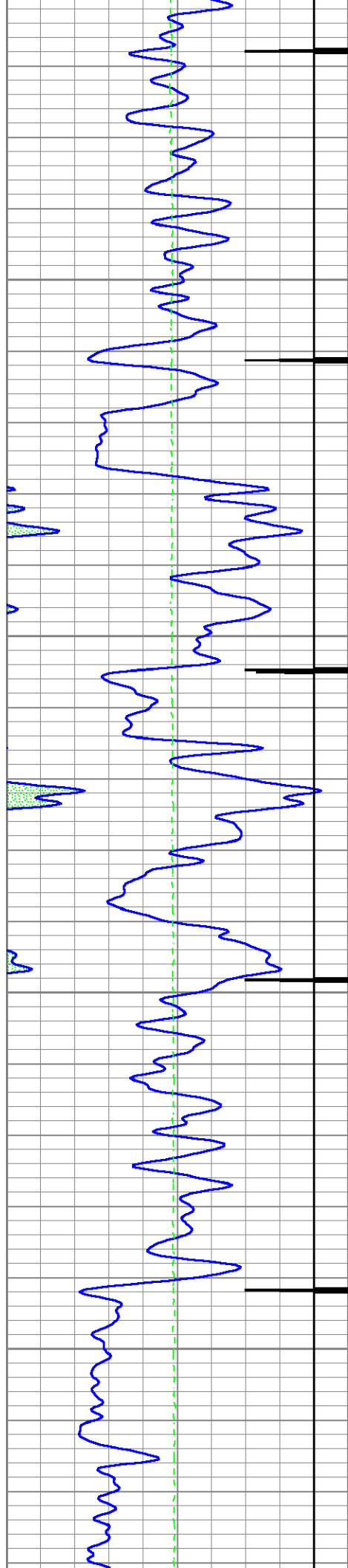




9100

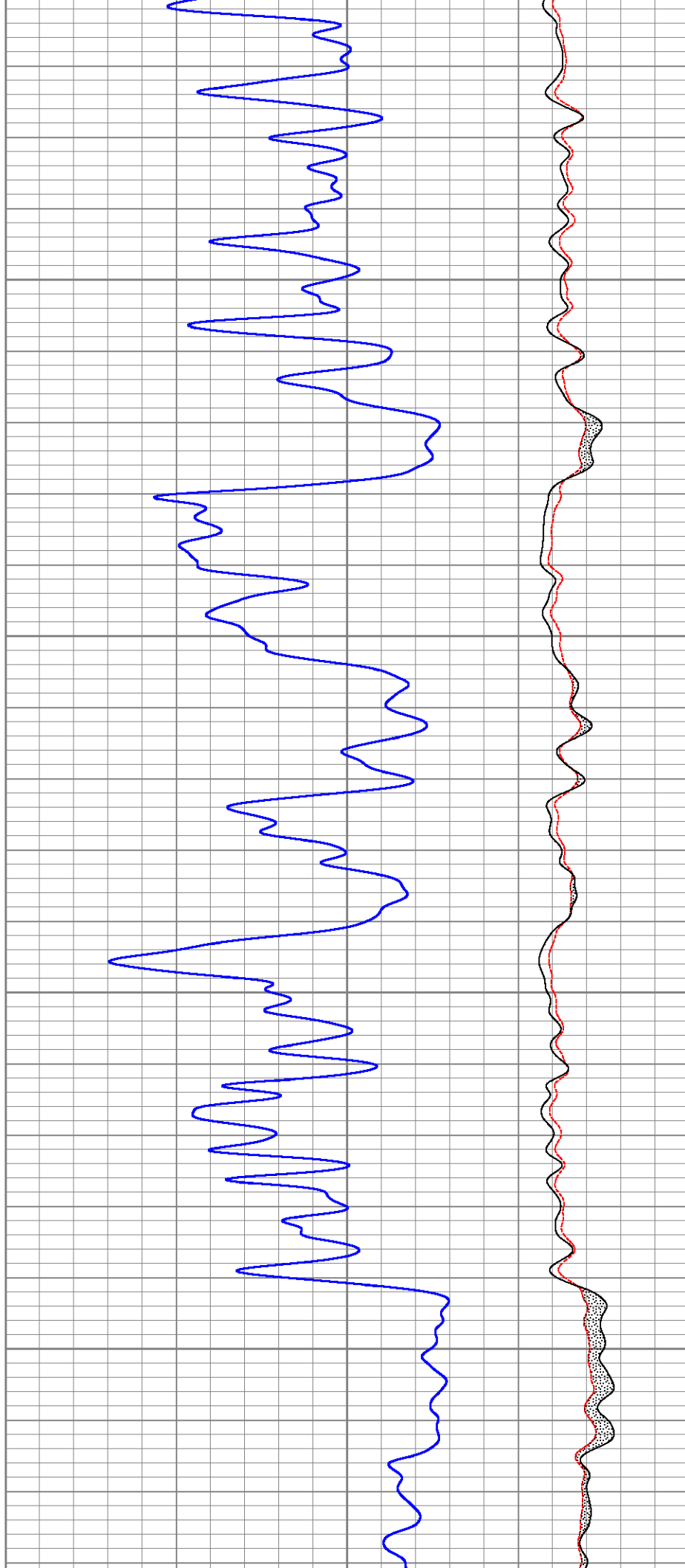
9200

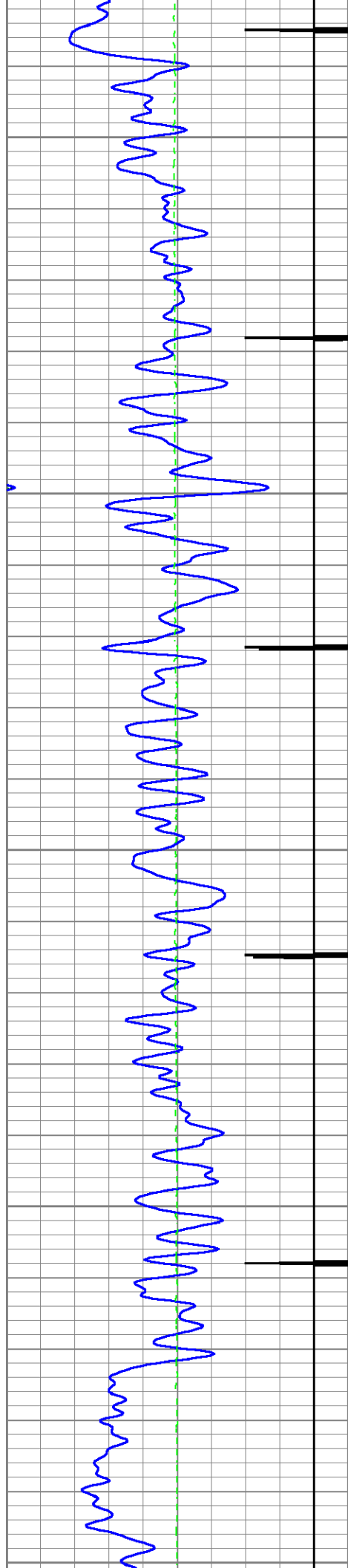




9300

9400

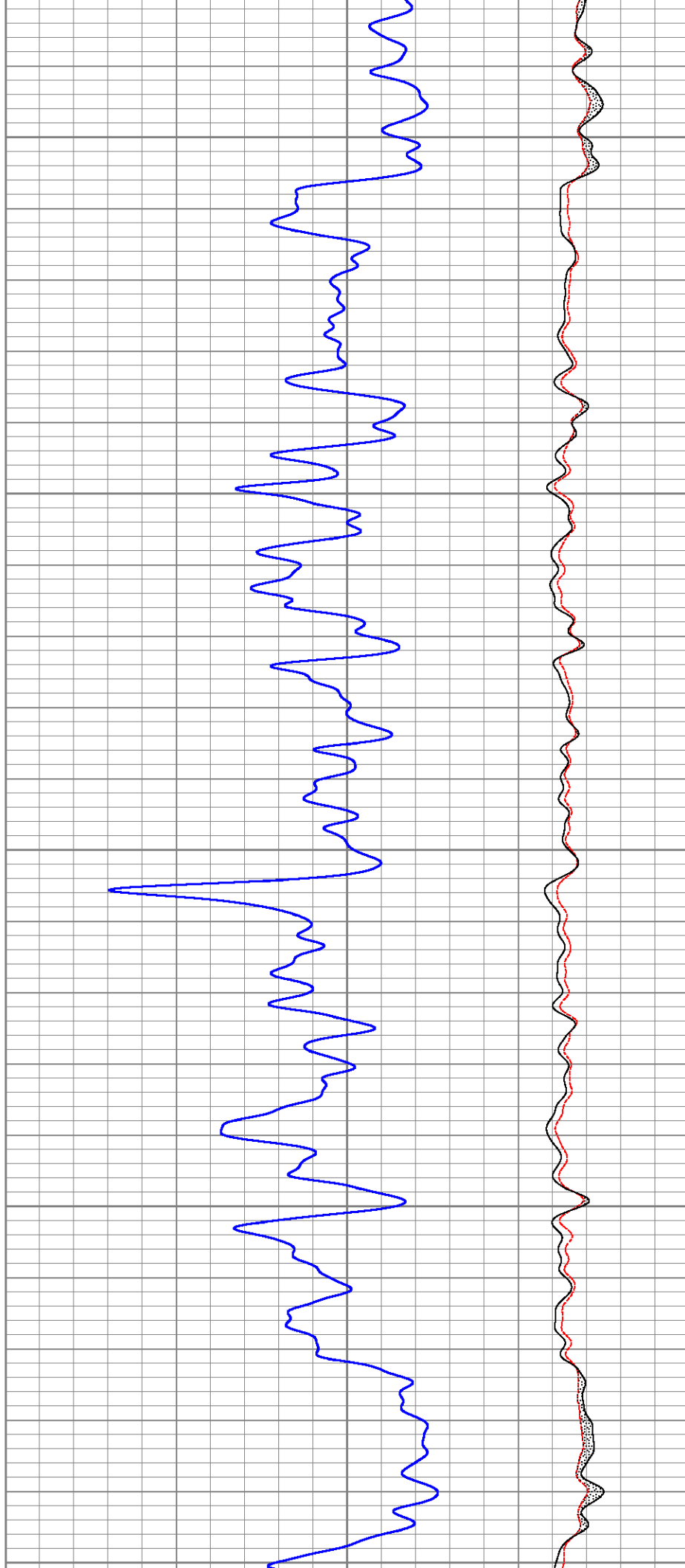




9500

9600

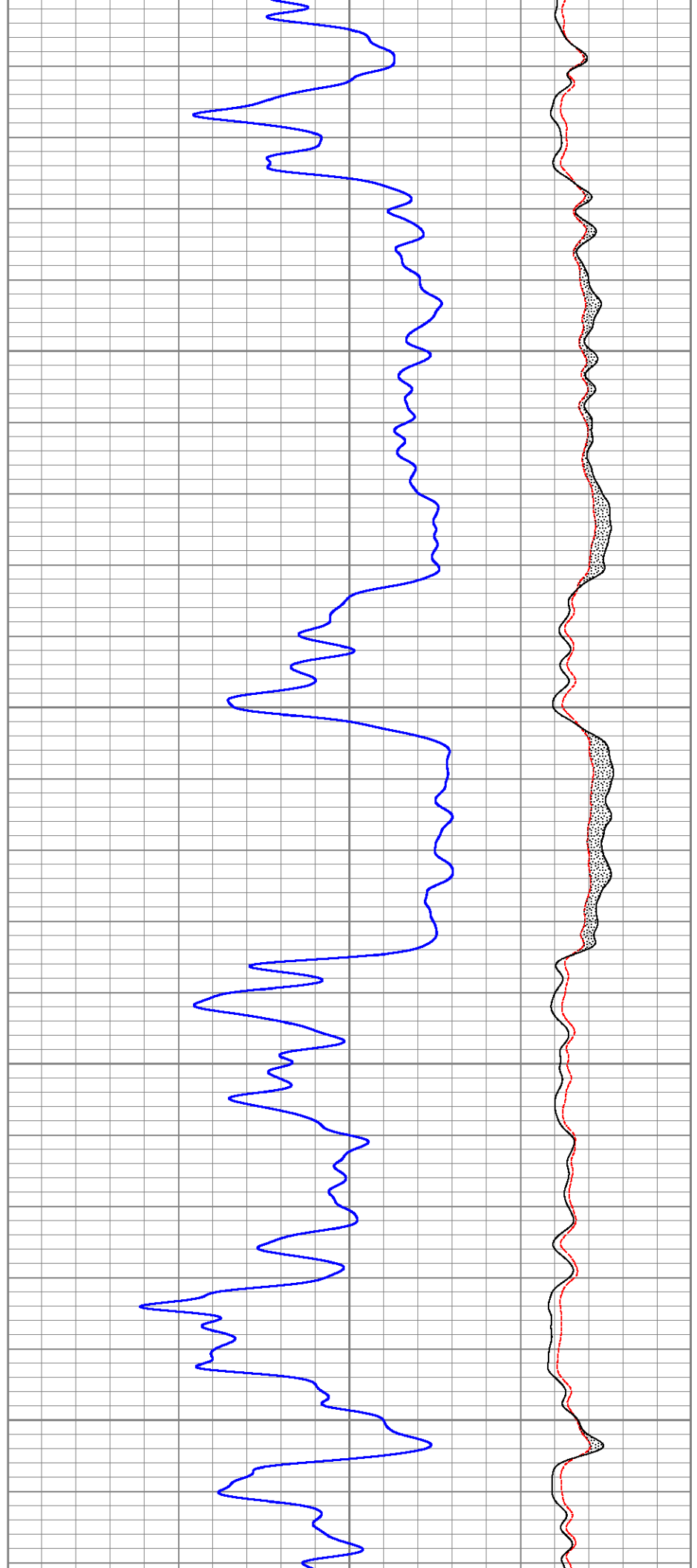
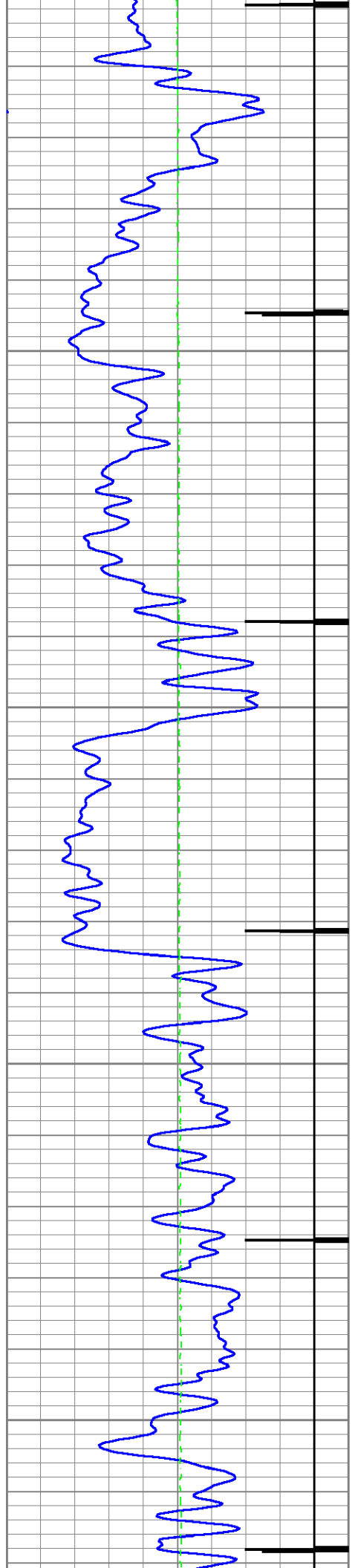
9700

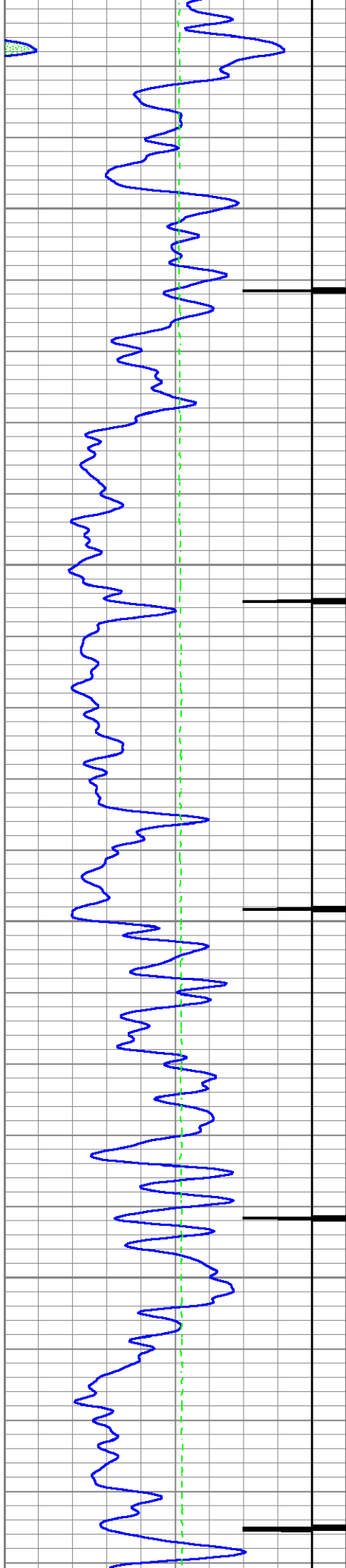


9750

9800

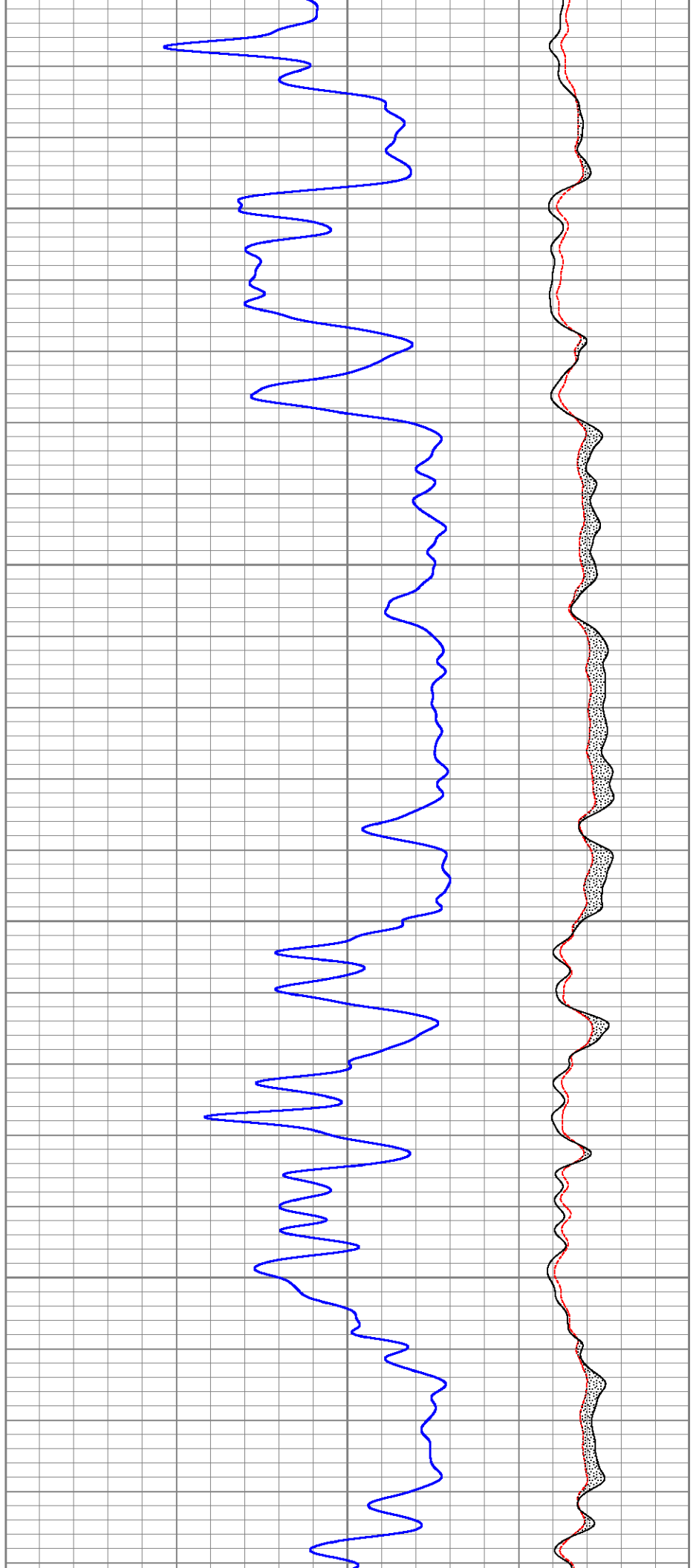
9900

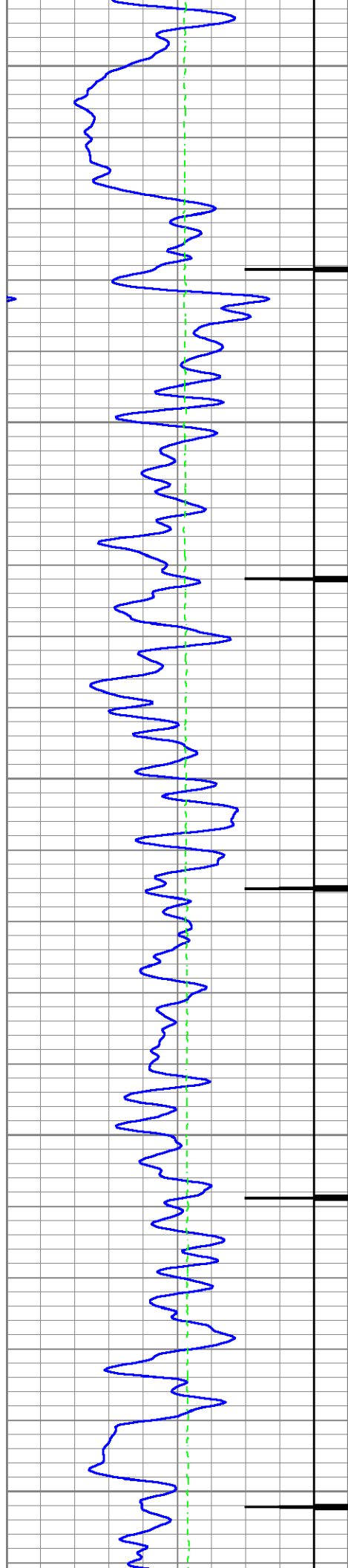




10000

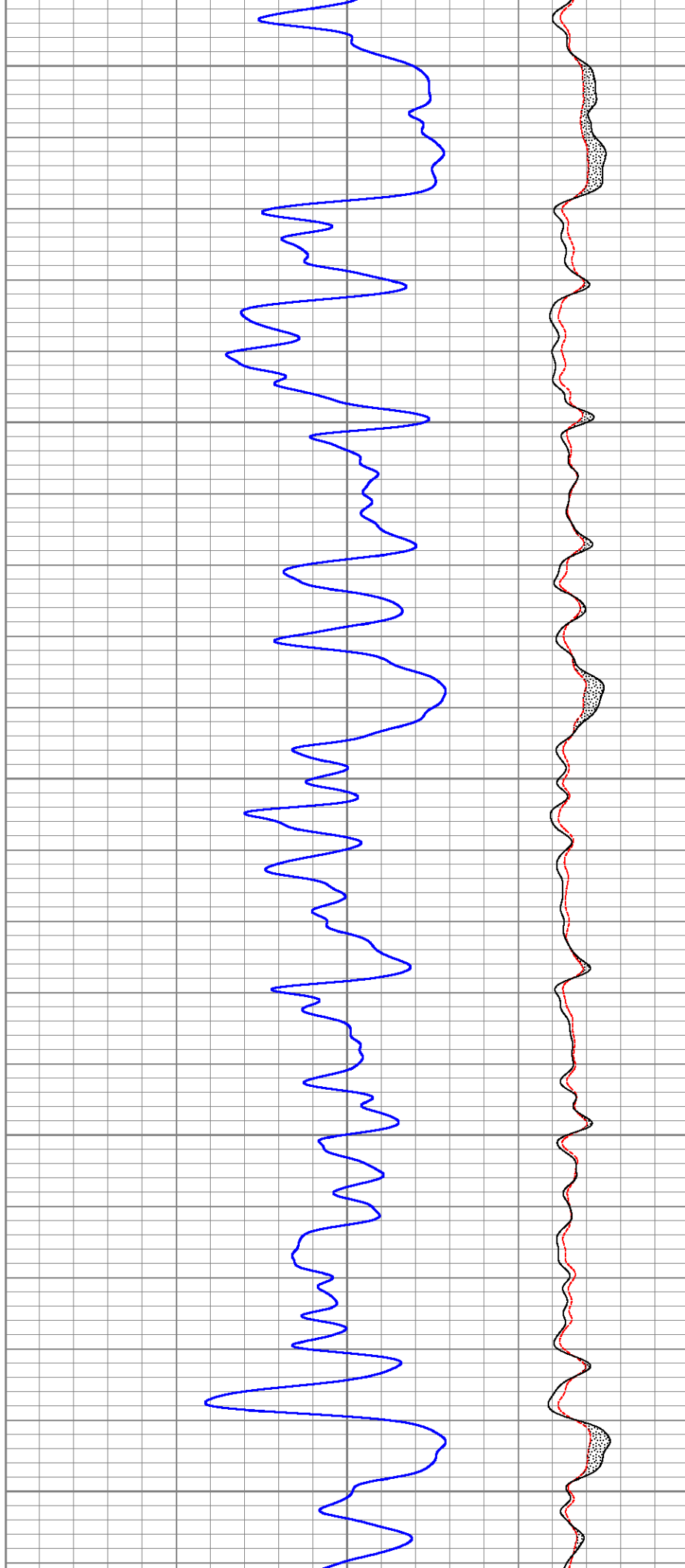
10100

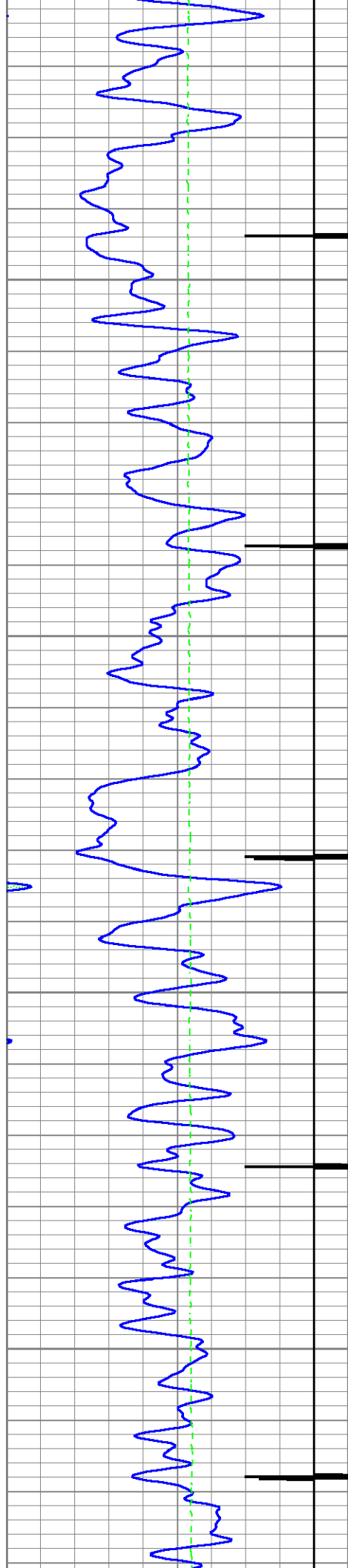




10200

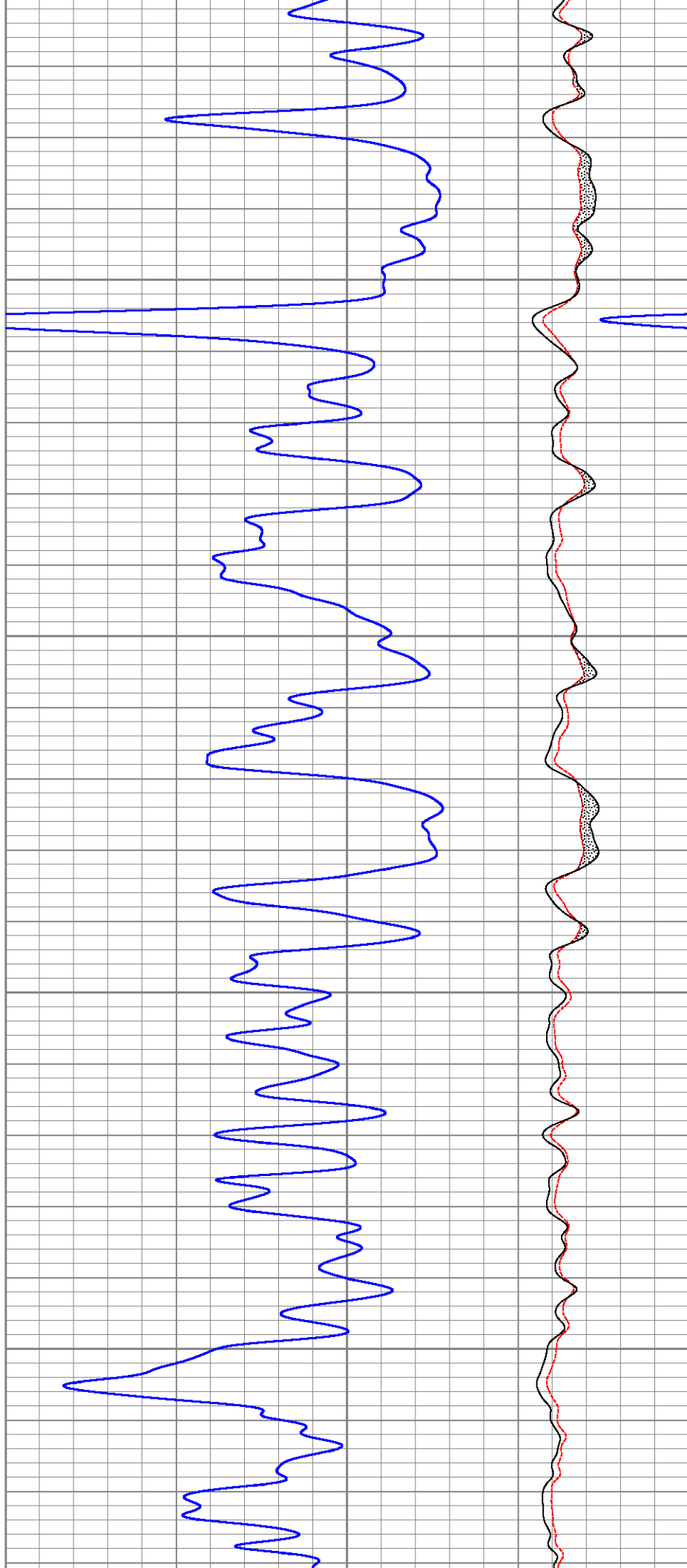
10300

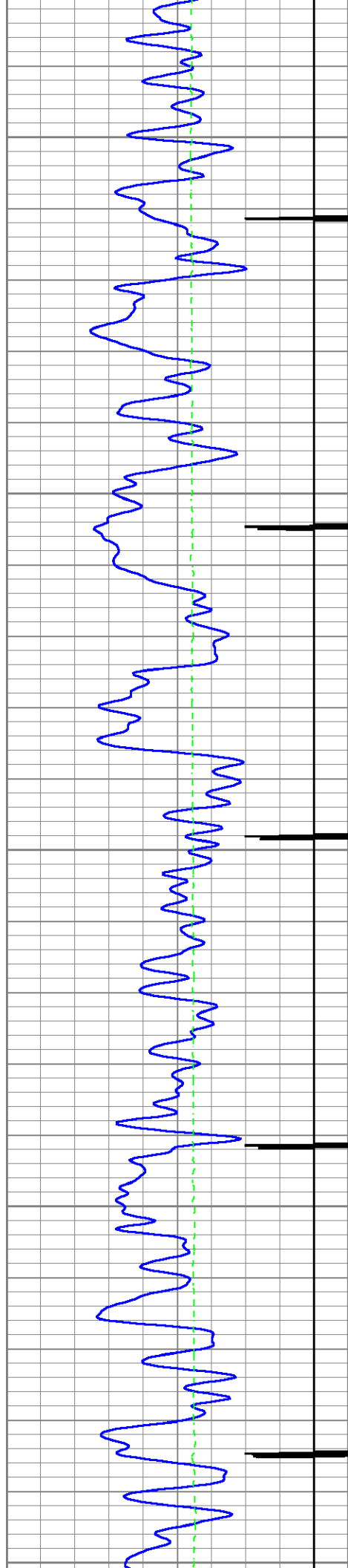




10400

10500

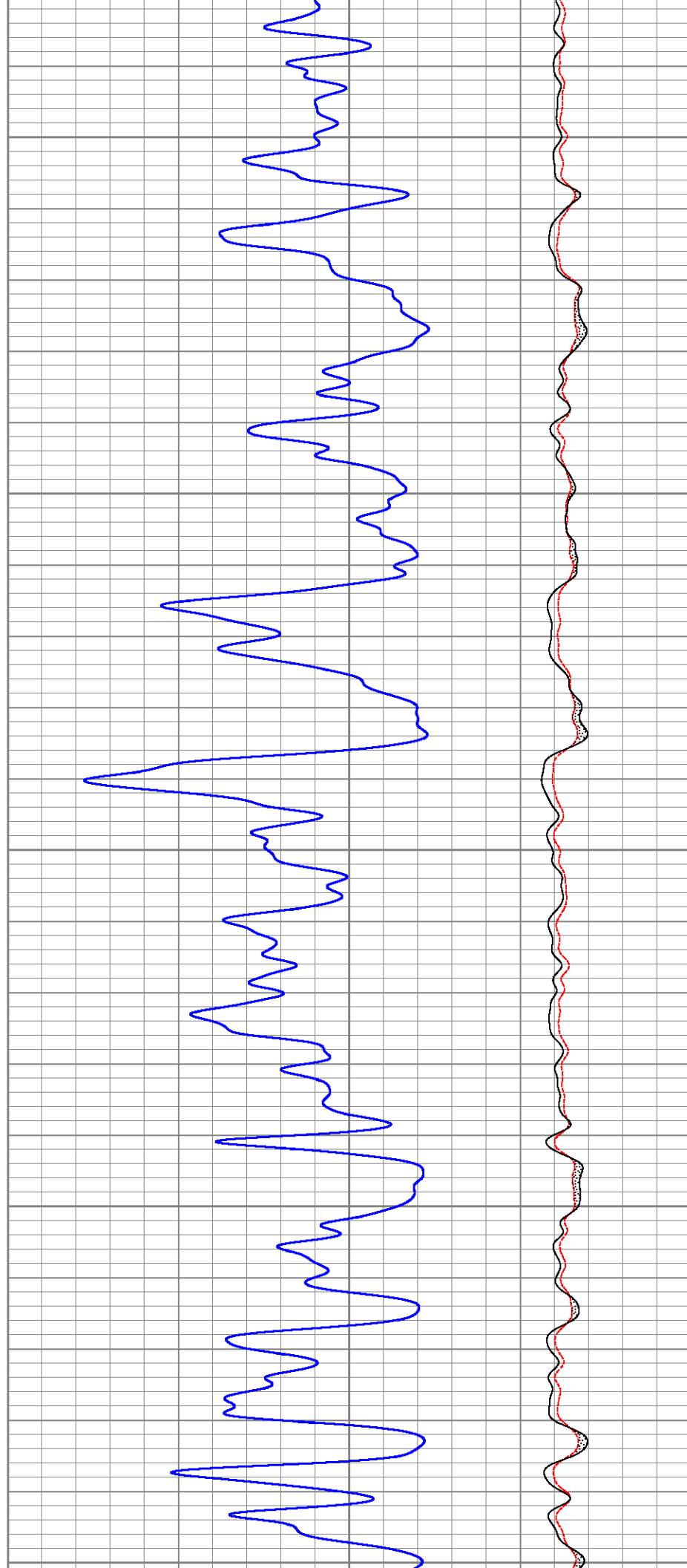




10600

10700

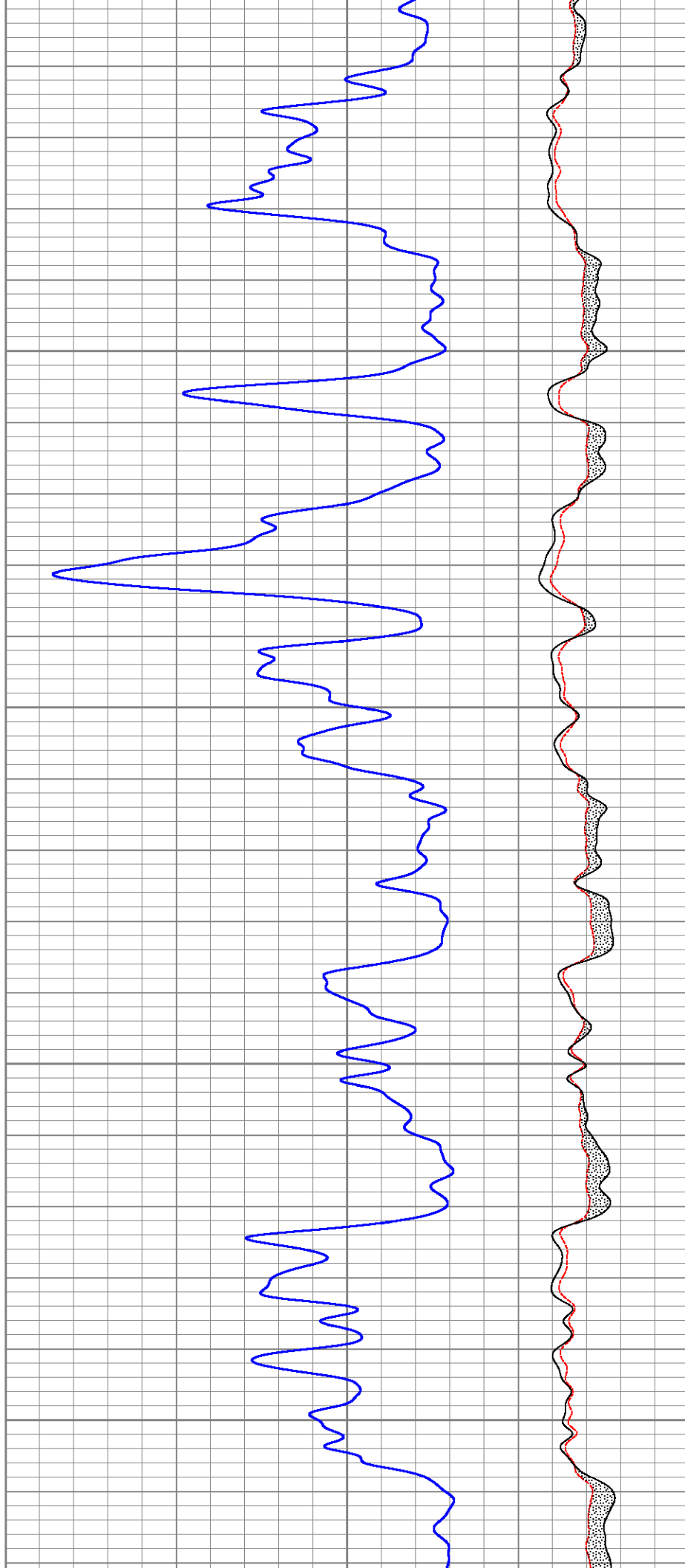
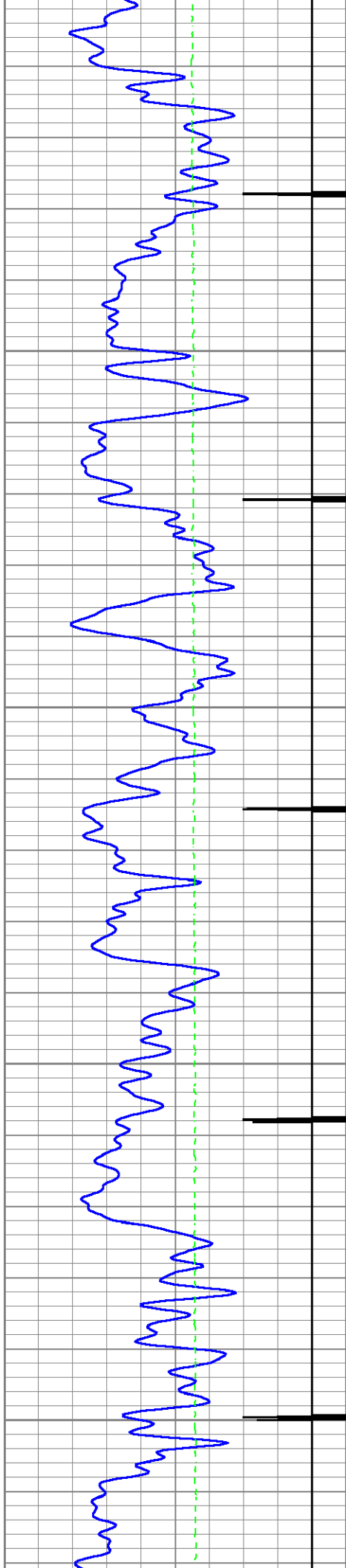
10800

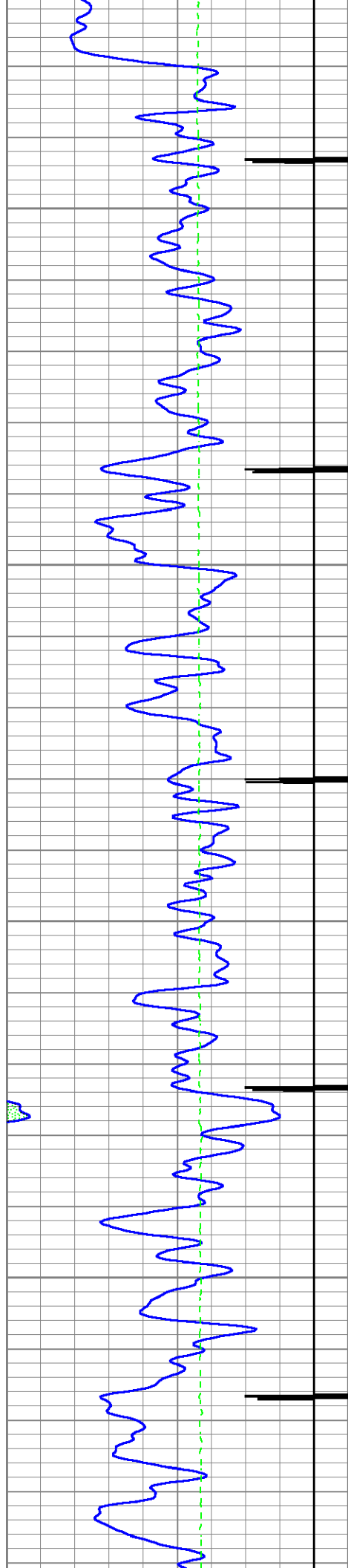




10900

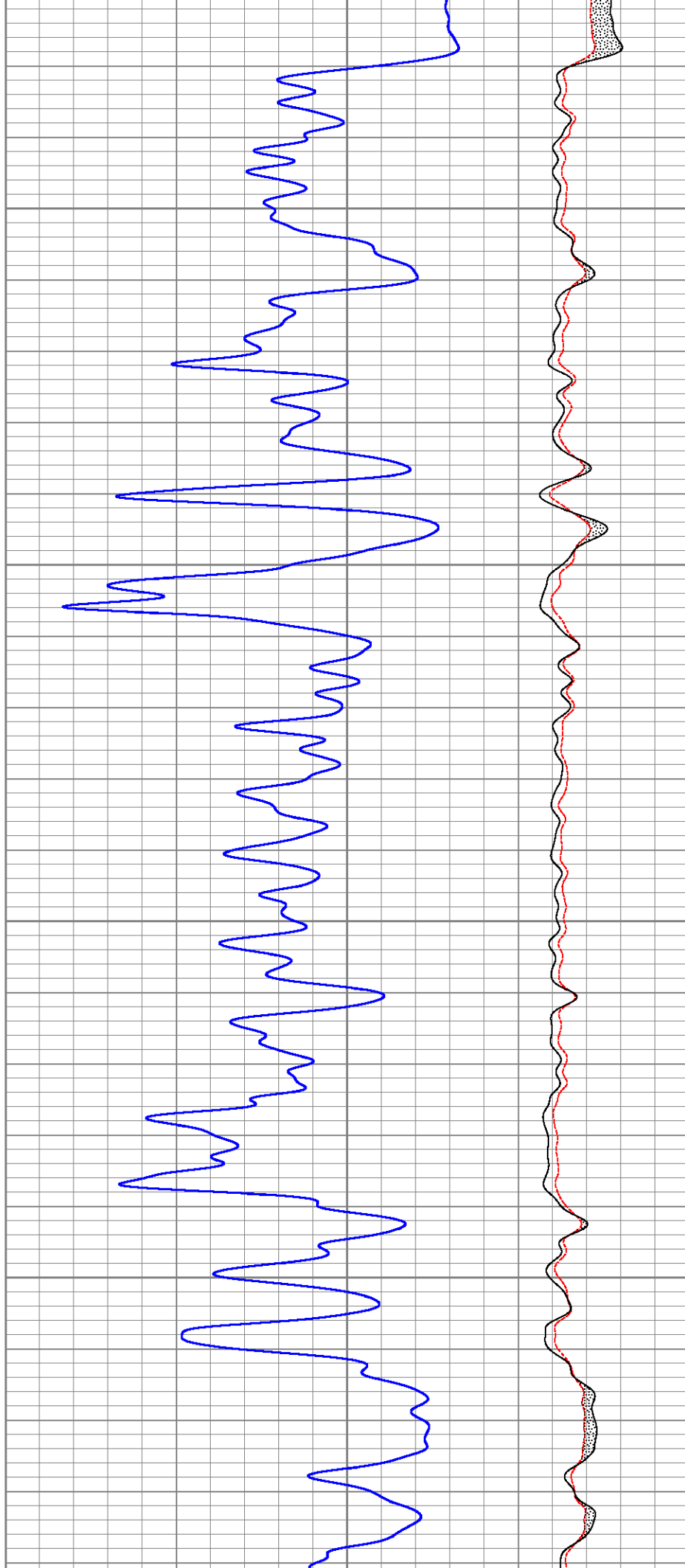
11000

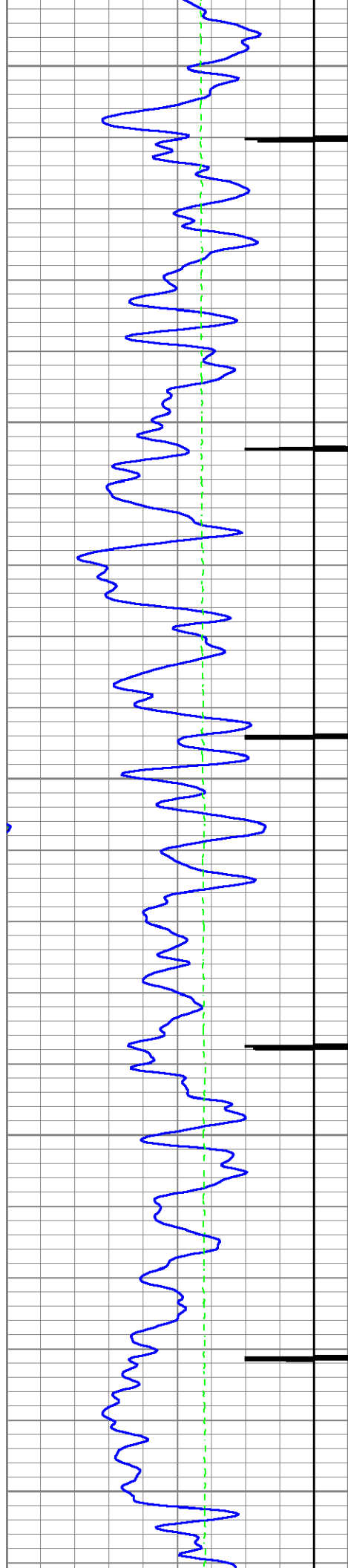




11100

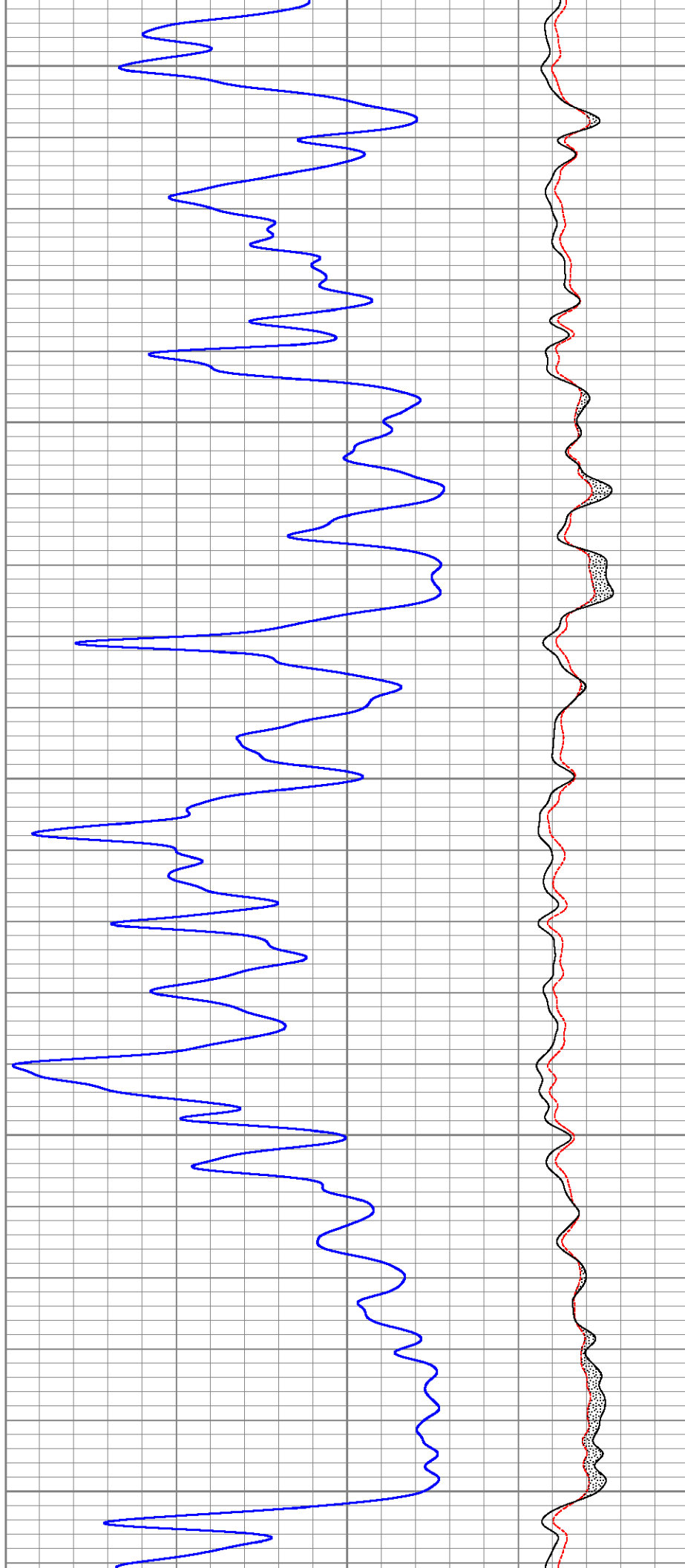
11200

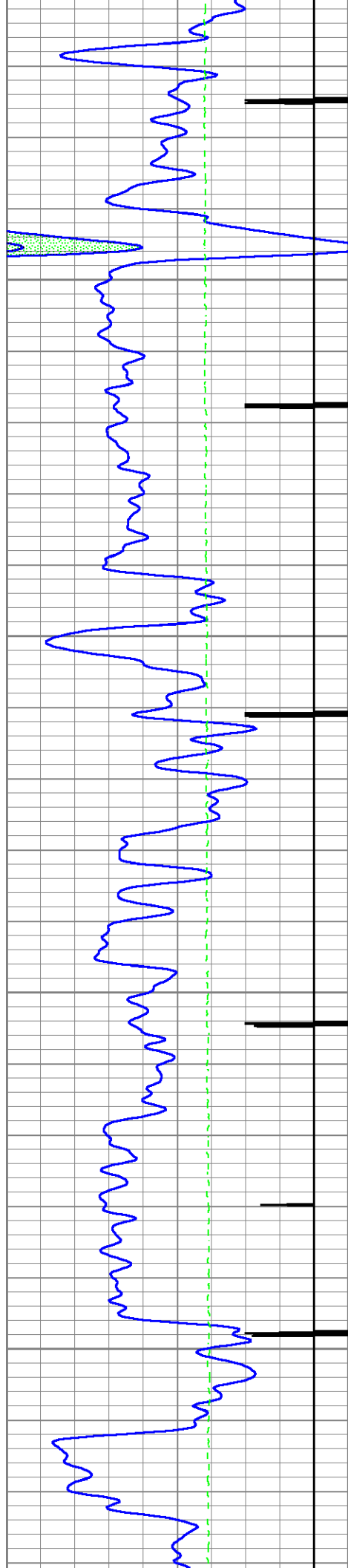




11300

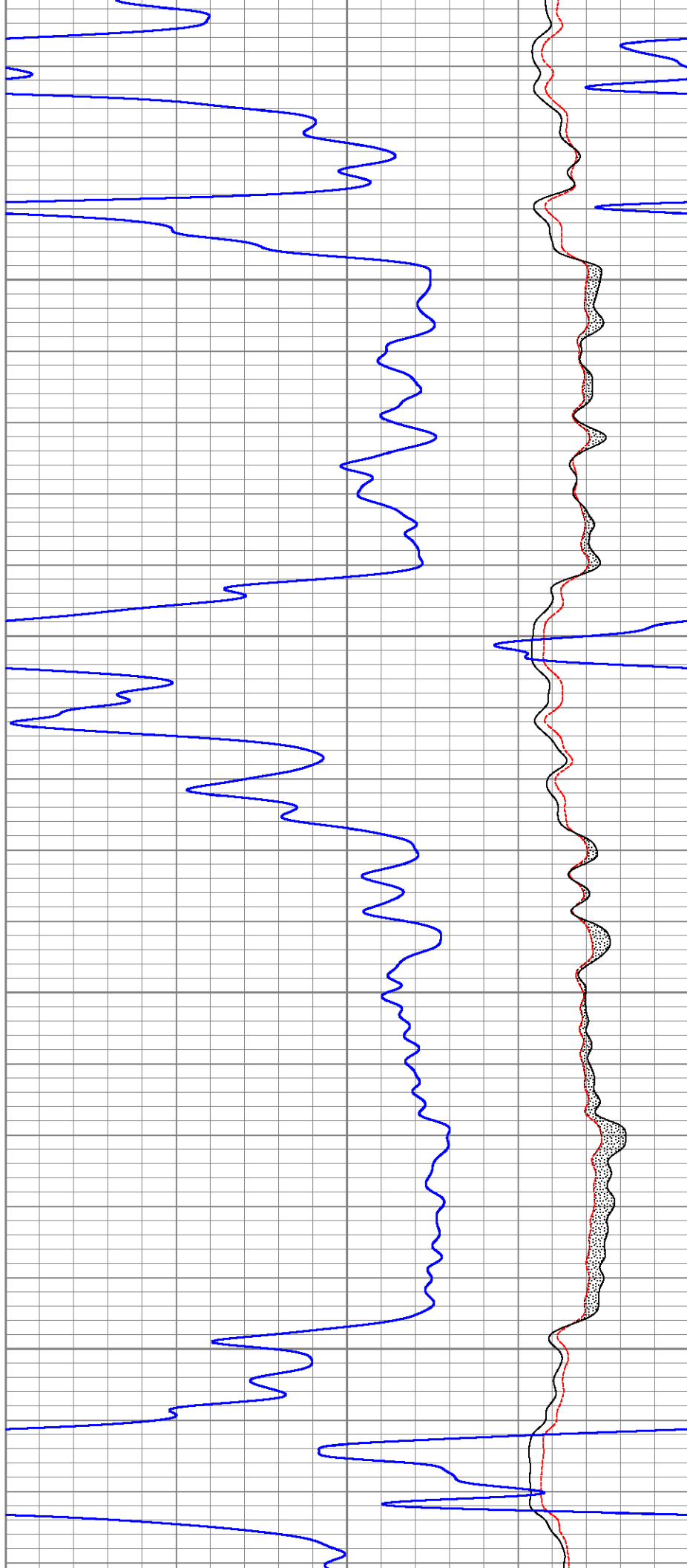
11400

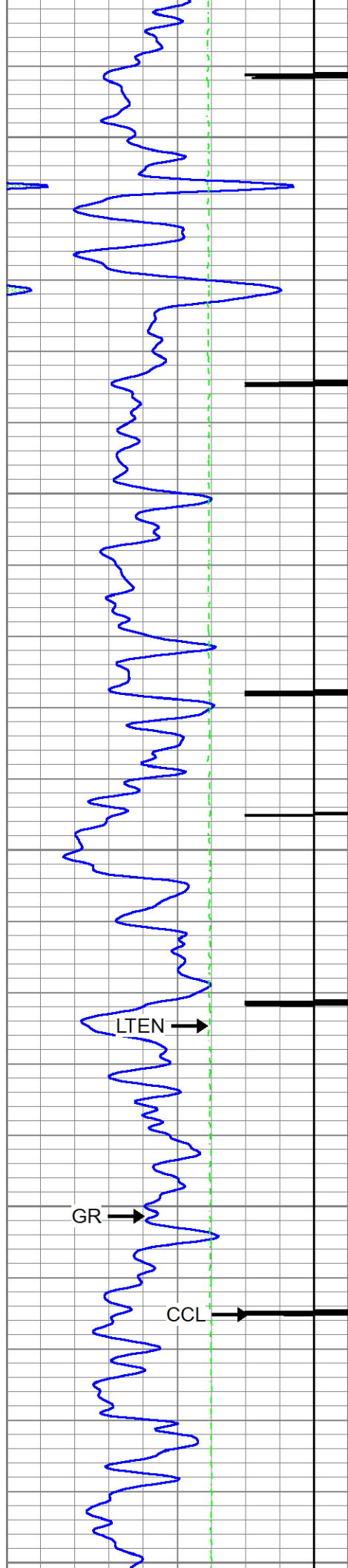




11500

11600

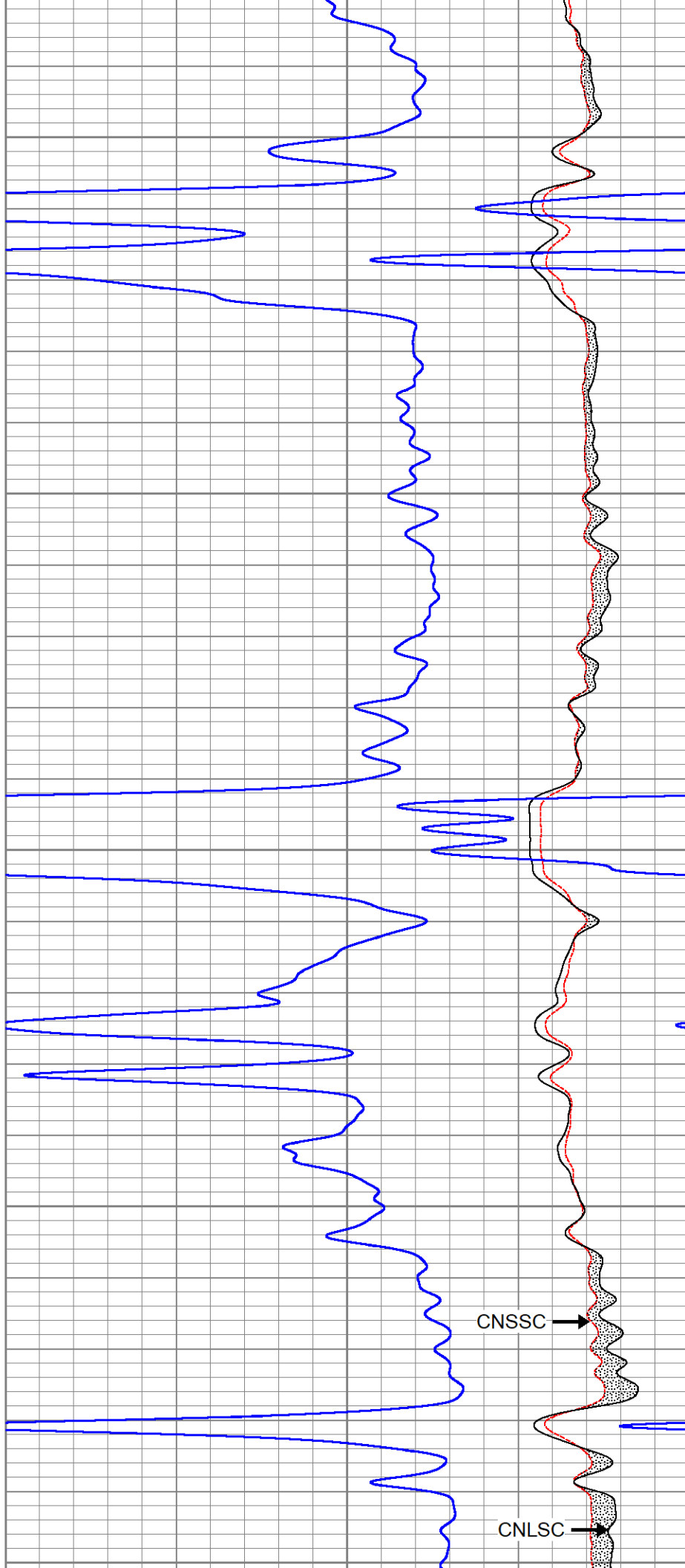




11700

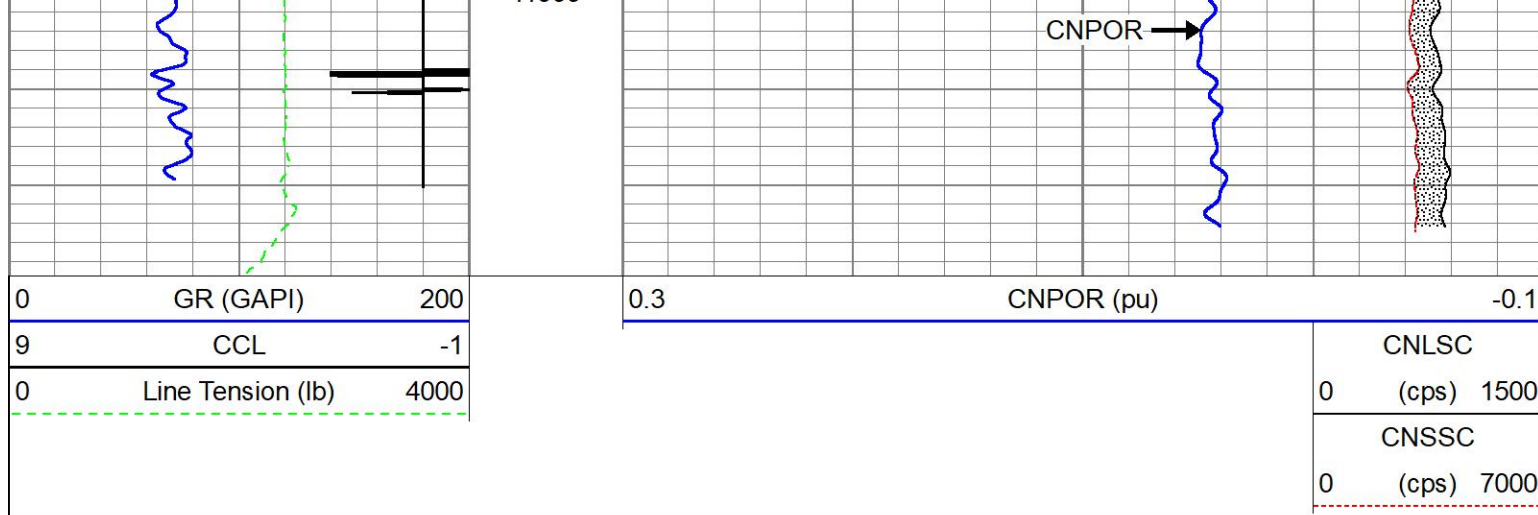
11800

11900



CNSSC

CNLSC



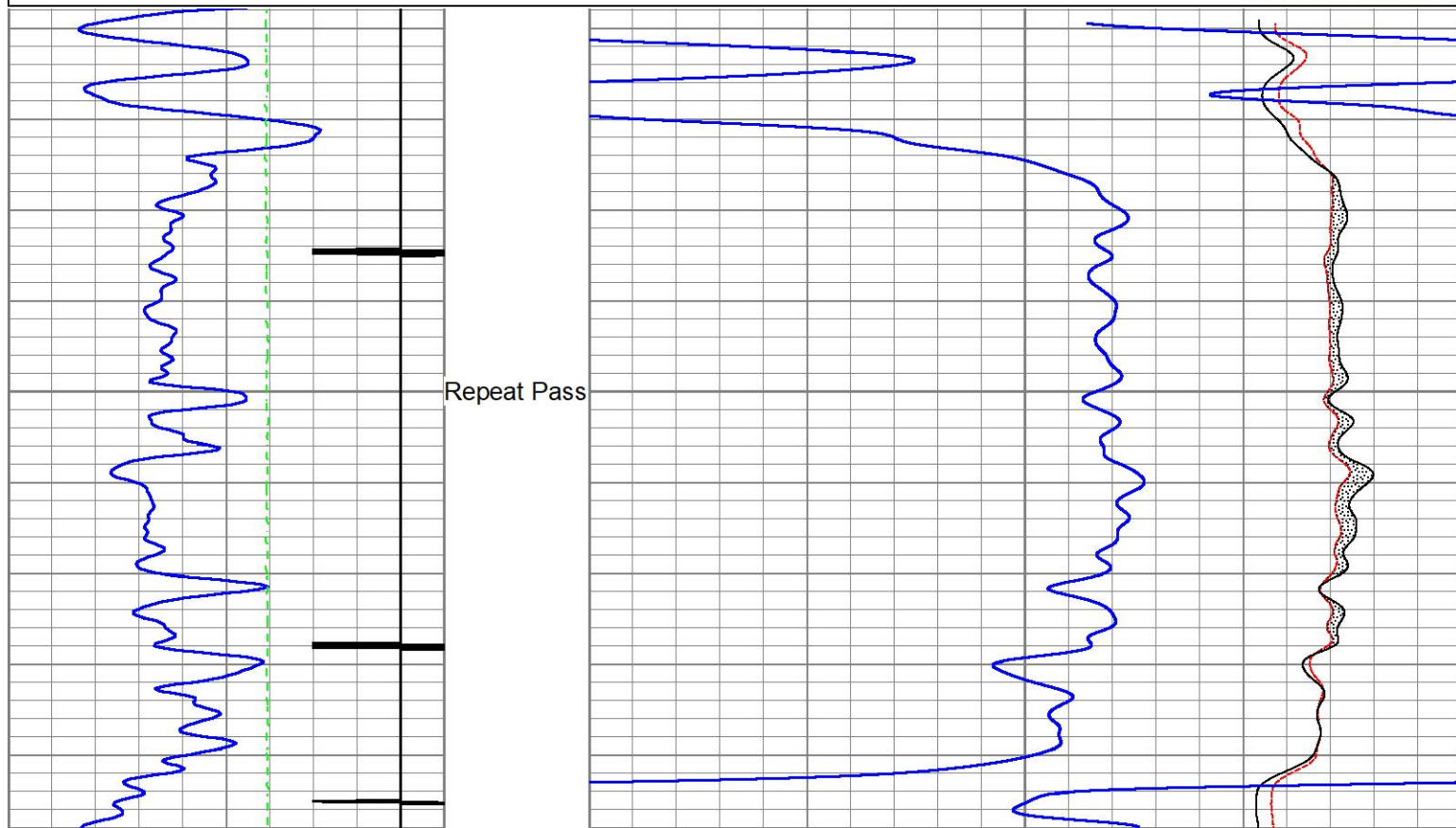


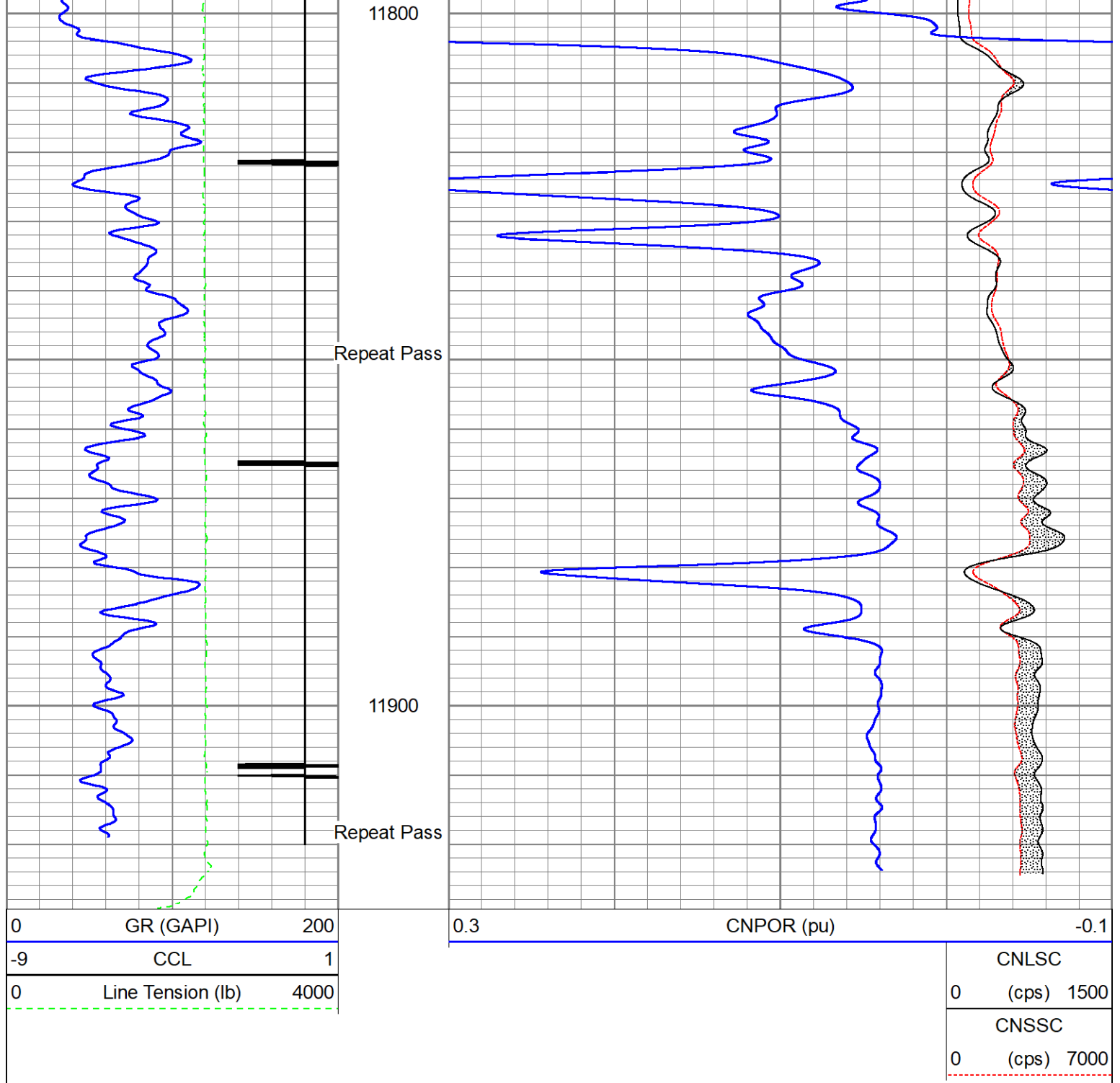
## Repeat Pass 5" = 100'

Database File	caerus_bju b26 fed 11d-26-496_rcbl_cnl_10-10-2022.db
Dataset Pathname	repeat
Presentation Format	twgcnl
Dataset Creation	Tue Oct 11 10:22:25 2022
Charted by	Depth in Feet scaled 1:240

0	GR (GAPI)	200	0.3	CNPOR (pu)	-0.1
-9	CCL	1			CNLSC
0	Line Tension (lb)	4000			0 (cps) 1500
					CNSSC
					0 (cps) 7000



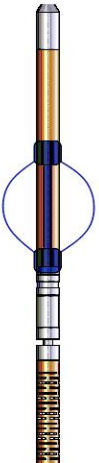


Calibration Report		
Database File	caerus_bju b26 fed 11d-26-496_rcbl_cnl_10-10-2022.db	
Dataset Pathname	main1	
Dataset Creation	Tue Oct 11 10:28:16 2022	
Compensated Neutron Calibration Report		
Model:		CNT - 275Dig
Serial Number:		FW1409-35
SHOP CALIBRATION Thu Mar 31 15:47:13 2022		
	Cal Tube	Units
Tank Ratio	11.6940	SS/LS
LS Detector	68.71	cps
SS Detector	748.40	cps

SS Detector	748.49	cps				
Tool Ratio	10.8929	SS/LS				
Tool Gain	1.0735	----				
PRE-SURVEY VERIFICATION						
	SS Detector	LS Detector	Measured (p.u.)	Target (p.u.)		
POST-SURVEY VERIFICATION						
	SS Detector	LS Detector	Measured (p.u.)	Target (p.u.)		
Gamma Ray Calibration Report						
Type / Serial:		Probe275dig / FW1403-104				
SHOP CALIBRATION		Thu Mar 31 15:29:33 2022				
	Counts/Sec.	Gain	Offset	Jig		
Background	64.8					
Calibrator	250.4					
		0.8888				
PRIMARY VERIFICATION						
Background	0.0					
Calibrator	0.0					
Difference			0.0			
BEFORE SURVEY VERIFICATION						
Background	0.0					
Calibrator	0.0					
Difference			0.0			
AFTER SURVEY VERIFICATION						
Background	0.0					
Calibrator	0.0					
Difference			0.0			
Segmented Cement Bond Log Calibration Report						
Serial Number:		FW1311-19				
Tool Model:		Probe275acc				
Calibration Casing Diameter:		4.500	in			
Calibration Depth:		7.692	ft			
Master Calibration, performed Tue Oct 11 06:33:54 2022:						
	Raw (v)		Calibrated (mv)		Results	
	Zero	Cal	Zero	Cal	Gain	Offset
3'	0.003	0.733	0.000	81.196	111.279	-0.375
CAL	0.004	0.752				
5'	0.007	0.704	0.000	81.196	116.549	-0.822
SUM						
S1	0.004	0.757	0.000	100.000	132.655	-0.471
S2	0.003	0.760	0.000	100.000	132.163	-0.455



S3	0.003	0.761	0.000	100.000	131.884	-0.396
S4	0.003	0.746	0.000	100.000	134.597	-0.437
S5	0.004	0.731	0.000	100.000	137.466	-0.488
S6	0.004	0.729	0.000	100.000	137.943	-0.519
S7	0.004	0.736	0.000	100.000	136.552	-0.510
S8	0.004	0.739	0.000	100.000	136.005	-0.515
Internal Reference Calibration, performed (Not Performed):						
	Raw (v)		Calibrated (v)		Results	
	Zero	Cal	Zero	Cal	Gain	Offset
CAL	0.000	0.000	0.004	0.752	1.000	0.000
Air Zero Calibration, performed Tue Oct 11 06:33:02 2022:						
	Raw (v)		Calibrated (v)		Results	
	Zero		Zero		Offset	
3'	0.000		0.000		0.000	
5'	0.000		0.000		0.000	
SUM						
S1	0.000		0.000		0.000	
S2	0.000		0.000		0.000	
S3	0.000		0.000		0.000	
S4	0.000		0.000		0.000	
S5	0.000		0.000		0.000	
S6	0.000		0.000		0.000	
S7	0.000		0.000		0.000	
S8	0.000		0.000		0.000	
Inclinometer Calibration Report						
Performed:	Thu Jul 28 15:55:38 2022					
	Low Read.	High Read.	Low Ref.	High Ref.		
X Accelerometer	-914.00	901.00	-1.00	1.00	gee	
Y Accelerometer	-903.00	898.00	-1.00	1.00	gee	
Z Accelerometer	3.47	893.02	0.00	1.00	gee	

Sensor	Offset (ft)	Schematic	Description	Length (ft)	O.D. (in)	Weight (lb)
			SO BS CENT-2750-4500 Slip Over 2-3/4" I.D. for 4-1/2" O.D. Casing Bow Spring Centralizer	1.33	3.25	10.00
WVFS8	14.27		RBT8acc-Probe275acc (FW1311-19) 2.75" Radial Corrosion with accelerometer	8.75	2.75	110.00

Tool Joint / Component	Depth (ft)	Tool Joint Diagram	Tool Joint Assembly Diagram	SO BS CENT-2750-4500 Slip Over 2-3/4" I.D. for 4-1/2" O.D. Casing Bow Spring Centralizer	GR-Probe275dig (FW1403-104) Probe Digital Gamma CCL	CNT-275Dig (FW1409-35) Probe Digital CNL	SO BS CENT-2750-4500 Slip Over 2-3/4" I.D. for 4-1/2" O.D. Casing Bow Spring Centralizer	Weight (lb)	Length (ft)
WVFS7	14.27								
WVFS6	14.27								
WVFS5	14.27								
WVFS4	14.27								
WVFS3	14.27								
WVFS2	14.27								
WVFS1	14.27								
WVF3FT	14.27								
WVF5FT	13.27								
RBT_HV	10.02								
RBT_ACCZ	10.02								
RBT_ACCY	10.02								
RBT_ACCX	10.02								
WVFSYNC	10.02								
WVFCAL	10.02								
DCCL	9.11								
CCL	9.11								
GR	7.78								
CNLSC	1.91								
CNSSC	1.48								
Dataset: caerus_bju b26 fed 11d-26-496_rcbl_cnl_10-10-2022.db: field/well/run1/main1 Total length: 18.77 ft Total weight: 237.00 lb O.D.: 3.25 in									