



Caerus Operating LLC

LONG STRING POST JOB REPORT

BJU B26 FED #21B-27-496 05-045-24447
S:26 T:4S R:96W Garfield CO

CallSheet #: 83289
Proposal #: 62995



LONG STRING Post Job Report

Attention: Mr. Cole Walton | (720) 880-6325 | cwalton@caerusoilandgas.com

Caerus Operating LLC

1001 17TH STREET | DENVER, CO 80202

Dear Mr. Cole Walton,

Thank you for the opportunity to provide cementing services on this well. American Cementing strives to achieve complete customer satisfaction. If you have any questions regarding the services or data provided, please contact American Cementing at any time.

Sincerely,

Krystal Schell

Field Engineer I | (719) 992-1830 | krystal.schell@americacementing.com

Field Office 28730 US-6, Rifle, CO 81650
Phone: (970) 657-1157

Job Details & Summary

Geometry

Type	Function	OD (in)	ID (in)	Weight (lb/ft)	Thread	Top (ft)	Bottom (ft)	Excess (%)
Casing	Outer	9.625	8.921	36	n/a	0	3029	0
Open Hole	Outer	n/a	8.75	n/a	n/a	3000	7095	25
Open Hole	Outer	n/a	8.75	n/a	n/a	7095	12624	0
Casing	Inner	4.5	4	11.6	n/a	0	12595.27	0

Equipment / People

Unit Type	Unit	Power Unit	Employee #1
Field Storage Silo	FSS-469		
Field Storage Silo	FSS-468		
AS Cement Trailer Float	CTF-558	TRC-053	Dragon, Shane
AS Cement Trailer Float	CTF-7145	TRC-115	Bonin, Matthew
AS Cement Trailer Float	CTF-901	TRC-115	Dragon, Shane
AS Cement Trailer Float	CTF-048	TRC-053	Bonin, Matthew
Cement Trailer Float	CTF-273	TRH-769	Bonin, Matthew
Cement Pump Float	CPF-058	TRH-959	Hale, Jason
Light Duty Vehicles	LDV-063		Castillo, Francisco

Timing

Event	Date/Time
Call Out	9/5/2022 04:00
Depart Facility	9/5/2022 05:45
On Location	9/5/2022 07:00
Rig Up Iron	9/5/2022 07:30
Job Started	9/5/2022 10:09
Job Completed	9/5/2022 13:07
Rig Down Iron	9/5/2022 13:20
Depart Location	9/5/2022 14:00

General Job Information

Metrics	Value
Well Fluid Density	10.5 lb/gal
Well Fluid Type	WBM
Rig Circulation Vol	1560 bbls
Rig Circulation Time	2 hours
Calculated Displacement	194 bbls
Actual Displacement	194 bbls
Total Spacer to Surface	0 bbls
Total CMT to Surface	0 bbls
Well Topped Out	N/A

Job Details

Metrics	Value
Flare Prior to Job	No
Flare Prior to Job	0 units
Flare During Job	No
Flare During Job	0 units
Flare at End of Job	No
Flare at End of Job	0 units
Well Full Prior to Job	Yes
Well Fluid Density Into Well	10.5 lb/gal
Well Fluid Density Out of Well	10.5 lb/gal

Job Details (cont.)

Metrics	Value
BHCT	215 °F
BHST	283 °F
Initial ISIP	psi
Final ISIP	psi
Sks in Formation	sks
Injection #1	bpm
Injection #1	psi
Injection #2	bpm
Injection #2	psi

Water Analysis

Metrics	Value	Recommended
Water Source	None	
Temperature	71 °F	50-80 °F
pH Level	7	5.5-8.5
Chlorides	0 mg/L	0-3000 mg/L
Total Alkalinity	240	0-1000
Total Hardness	250 mg/L	0-500 mg/L
Carbonates	0 mg/L	0-100 mg/L
Sulfates	200 mg/L	0-1500 mg/L
Potassium	250 mg/L	0-3000 mg/L
Iron	0 mg/L	0-300 mg/L

Circulation

Lost Circulation Experienced	Losses into Spacer	Losses into Cement	Losses into Displacement
Yes	N/A	N/A	N/A

Circulation Details

GOT RETURNS 47 BBLs INTO SCAVENGER, AND LOST RETURNS 150 BBLs INTO TAIL, AFTER SHUTTING PARASITE AIR AT 100 BLS INTO TAIL

Job Execution Information

Fluid	Product	Function	Density (lb/gal)	Yield (ft ³ /sk)	Water Rq. (gal/sk)	Water Rq. (gal/bbl)	Volume (sks)	Volume (bbl)	Designed Top (ft)
1	Mud Flush	Flush	8.45			40.86		20.00	653
2	Scavenger	Scavenger	11.50	2.76	16.68		235.00	116.00	1000
3	Lead	Lead	12.70	2.00	11.00		821.00	292.00	3000
4	Tail	Tail	13.50	2.00	9.66		818.00	290.89	7325
5	Water + KCL Sub	DisplacementFinal	8.34			42.00		194.00	0

Job Fluid Details

Fluid	Type	Fluid	Product	Function	Conc.	Uom
1	Flush	Mud Flush	SAPP	Surfactant	10.00	lb/bbl
1	Flush	Mud Flush	SS-201	Surfactant	0.50	gal/bbl
2	Scavenger	Scavenger	ASTM TYPE I/II	Cement	100.00	%
2	Scavenger	Scavenger	BA-60	GasMigration	0.30	%BWOB
2	Scavenger	Scavenger	FP-24	Defoamer	0.30	%BWOB
2	Scavenger	Scavenger	GW-86	Viscosifier	0.20	%BWOB
2	Scavenger	Scavenger	IntegraSeal PHENO	LostCirculation	3.00	lb/sk
2	Scavenger	Scavenger	R-3	Retarder	0.50	%BWOB
2	Scavenger	Scavenger	STATIC FREE	Other	0.01	lb/sk
3	Lead	Lead	ASTM TYPE I/II	Cement	100.00	%
3	Lead	Lead	BA-60	GasMigration	0.30	%BWOB
3	Lead	Lead	FL-66	FluidLoss	0.50	%BWOB
3	Lead	Lead	FP-24	Defoamer	0.30	%BWOB
3	Lead	Lead	GW-86	Viscosifier	0.10	%BWOB
3	Lead	Lead	IntegraSeal PHENO	LostCirculation	3.00	lb/sk
3	Lead	Lead	R-3	Retarder	0.30	%BWOB
3	Lead	Lead	STATIC FREE	Other	0.01	lb/sk
4	Tail	Tail	CLASS G	Cement	70.00	%
4	Tail	Tail	FLY ASH (POZZOLAN)	Extender	30.00	%
4	Tail	Tail	BA-60	GasMigration	0.20	%BWOB
4	Tail	Tail	BENTONITE	Viscosifier	8.00	%BWOB
4	Tail	Tail	FL-24	FluidLoss	0.40	%BWOB
4	Tail	Tail	FP-24	Defoamer	0.30	%BWOB

Fluid	Type	Fluid	Product	Function	Conc.	Uom
4	Tail	Tail	IntegraSeal PHENO	LostCirculation	3.00	lb/sk
4	Tail	Tail	R-3	Retarder	0.25	%BWOB
4	Tail	Tail	S-8	StrengthRetrogression	25.00	%BWOB

Job Logs

Line	Event	Date (MM/DD/YY)	Time (HH:MM)	Density (lb/gal)	Pump Rate (bpm)	Pump Volume (bbls)	Pipe Pressure (psi)	Comment
1	CALLOUT	9/5/2022	04:00					ON LOCATION AT 08:00 HRS
2	LEAVE THE YARD	9/5/2022	05:45					CREW LEAVE THE YARD
3	ON LOCATION	9/5/2022	07:00					CREW ON LOCATION
4	RIG UP	9/5/2022	07:30					RIG UP MEETING, RIG UP
5	SAFETY MEETING	9/5/2022	09:20					PRE-JOB SAFETY MEETING
6	PRESSURE TEST	9/5/2022	10:09				5849	PRESSURE TEST LINES
7	PUMP SPACER	9/5/2022	10:12	9	5	20	331	MUD FLUSH SPACER
8	SCAVENGER	9/5/2022	10:17	11.5	5	58	251	SCAV 235 SKS/116 BBLS AT 11.5 PPG, GOT RETURNS AT 47 BBLS
9	SCAVENGER	9/5/2022	10:28	11.5	5	58	263	116 BBLS SCAVENGER PUMPED
10	LEAD CEMENT	9/5/2022	10:42	12.7	6	50	501	LEAD 821 SKS/292 BBLS AT 12.7 PPG
11	LEAD CEMENT	9/5/2022	10:51	12.7	6	50	505	100 BBLS LEAD CEMENT PUMPED
12	LEAD CEMENT	9/5/2022	10:59	12.7	6	50	503	150 BBLS LEAD CEMENT PUMPED
13	LEAD CEMENT	9/5/2022	11:07	12.7	6	50	521	200 BBLS LEAD CEMENT PUMPED
14	LEAD CEMENT	9/5/2022	11:15	12.7	6	92	497	292 BBLS LEAD CEMENT PUMPED
15	TAIL CEMENT	9/5/2022	11:33	13.5	7.5	50	985	TAIL 818 SKS/291 BBLS AT 13.5 PPG
16	TAIL CEMENT	9/5/2022	11:40	13.5	7.5	50	993	100 BBLS TAIL CEMENT PUMPED, SHUT PARASITE AIR
17	TAIL CEMENT	9/5/2022	11:46	13.5	5	50	473	150 BBLS TAIL CEMENT PUMPED, LOST RETURNS
18	TAIL CEMENT	9/5/2022	11:53	13.5	5	50	469	200 BBLS TAIL CEMENT PUMPED
19	TAIL CEMENT	9/5/2022	12:04	13.5	5	91	461	291 BBLS TAIL CEMENT PUMPED
20	SHUTDOWN	9/5/2022	12:27					WASH PUMP AND LINES, DROP PLUG
21	DISPLACEMENT	9/5/2022	12:34	8.34	7	50	645	DISPLACEMENT WATER + RESCARE
22	DISPLACEMENT	9/5/2022	12:41	8.34	7	50	1305	100 BBLS DISPLACEMENT PUMPED
23	DISPLACEMENT	9/5/2022	12:49	8.34	6	84	2151	184 BBLS DISPLACEMENT PUMPED
24	SLOW RATE	9/5/2022	13:01	8.34	4	10	2169	SLOW RATE
25	LAND PLUG	9/5/2022	13:07				3373	LAND PLUG
26	CHECK FLOATS	9/5/2022	13:12					FLOATS HELD, 2.5 BBLS FLOW BACK
27	RIG DOWN	9/5/2022	13:20					RIG DOWN MEETING, RIG DOWN
28	LEAVE LOCATION	9/5/2022	14:00					CREW LEAVE LOCATION
29	OTHER	9/5/2022	14:01					615 BBLS MUD RECOVERED

Pump Diagrams



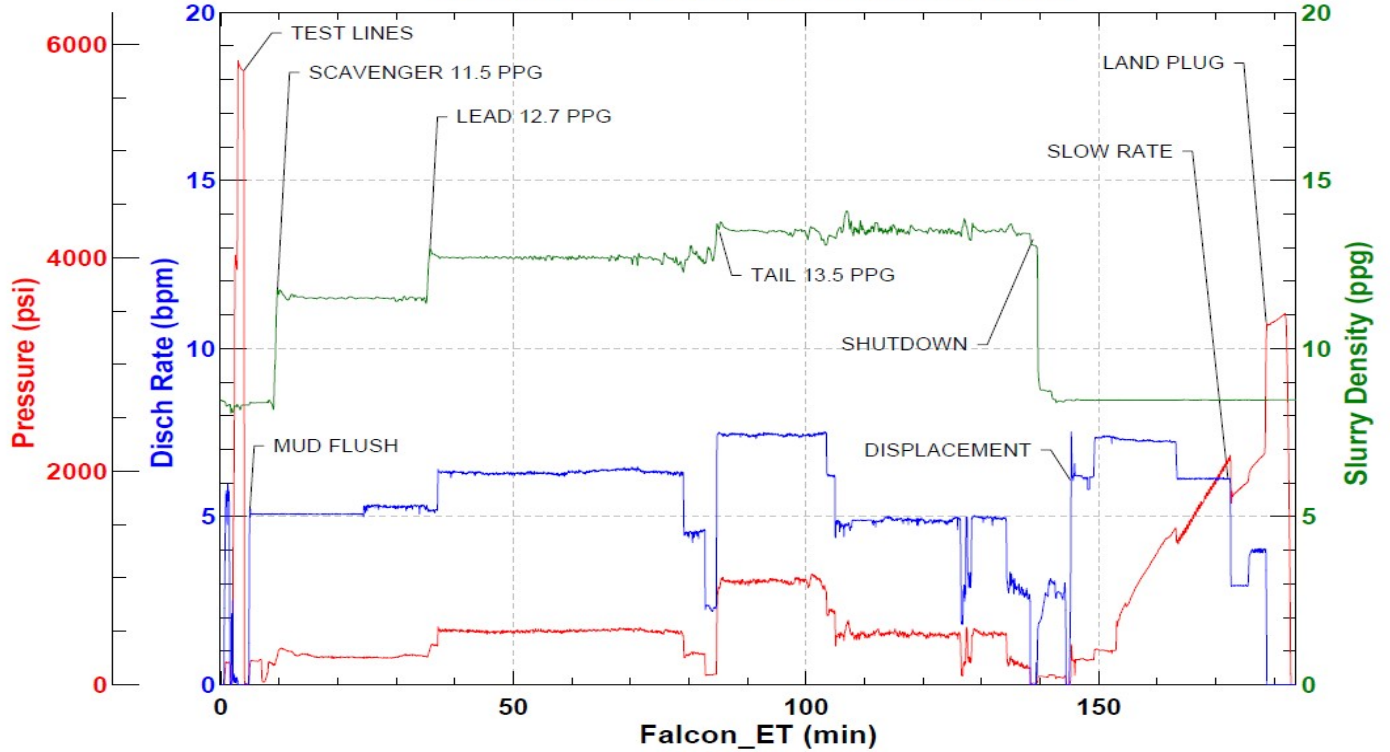
JobMaster Program Version 5.01C1

Job Number: 83289

Customer: CAERUS

Well Name: FED 21B-27

CAERUS FED 21B-27 PRODUCTION



Job Start: Monday, September 05, 2022