

Project: Garfield County, CO
 Site: BJU B26 496 Pad
 Well: BJU B26 FED 21B-27 496
 Wellbore: Wellbore #1
 Design: Design #2
 Latitude: 39.677515
 Longitude: -108.137795
 Ground Level: 8211.0
 RKB @ 8241.0usft (30')

PROJECT DETAILS: Garfield County, CO

Geodetic System: Universal Transverse Mercator (US Survey Feet)
 Datum: NAD 1927 - Western US
 Ellipsoid: Clarke 1866
 Zone: Zone 12N (114 W to 108 W)
 System Datum: Mean Sea Level

REFERENCE INFORMATION

Vertical (TVD) Reference: RKB @ 8241.0usft (30')
 Section (VS) Reference: Slot - 21B-27(0.0N, 0.0E)
 Measured Depth Reference: RKB @ 8241.0usft (30')
 Calculation Method: Minimum Curvature

FORMATION TOP DETAILS

TVDPath	MDPath	Formation
3361.0	3643.2	Wasatch
5761.0	6306.1	Wasatch G
5808.0	6358.3	Top Injection Zone
6061.0	6639.0	Fort Union
6251.0	6849.8	Top Influx Sand
6342.0	6950.8	Bot Influx Sand
7842.0	8572.7	Bot Injection Zone
8026.0	8757.0	Ohio Creek / TOG
8411.0	9142.1	Williams Fork
11188.0	11920.0	Cameo
14688.0	12420.2	Rollins

SECTION DETAILS

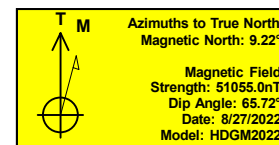
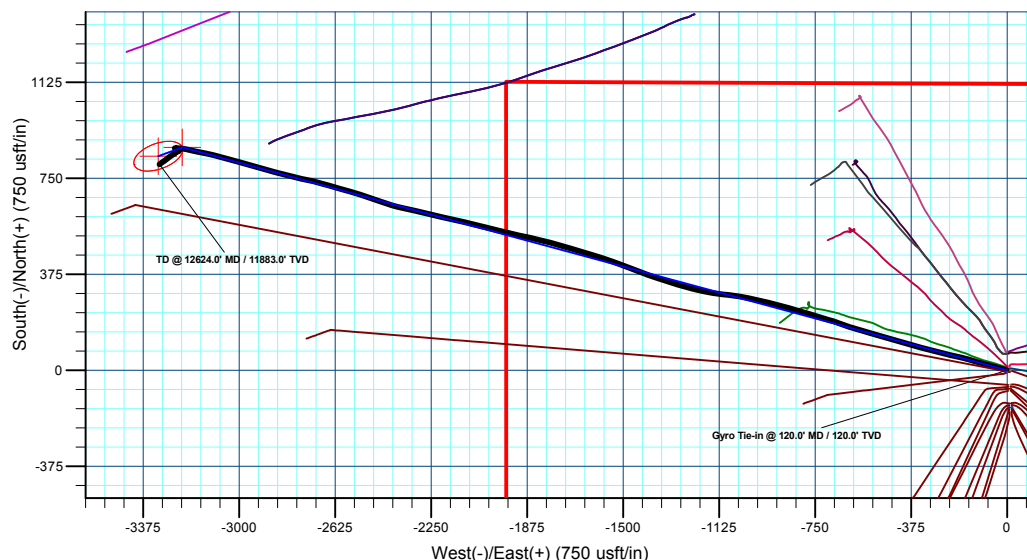
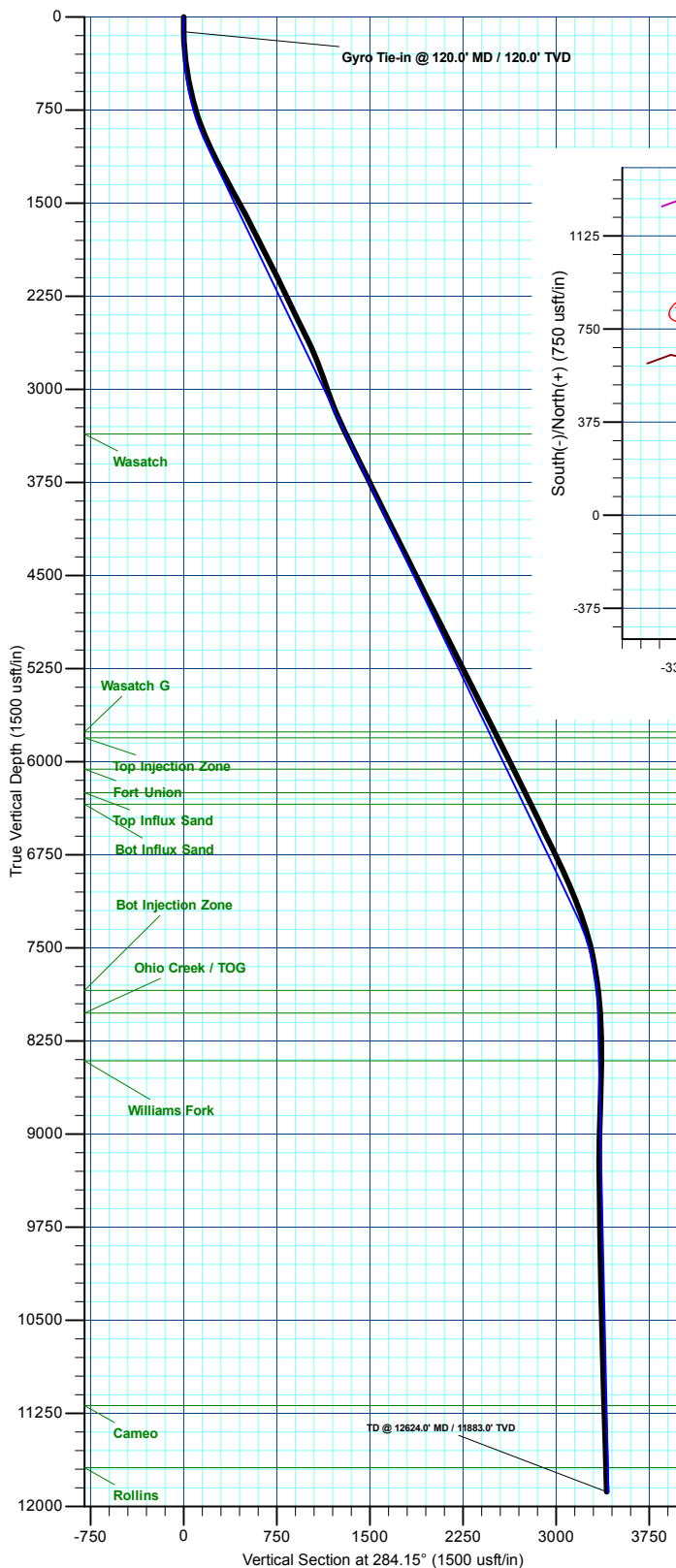
MD	Inc	Azi	TVD	+N/-S	+E/-W	Dleg	TFace	Vsect	Annotation
120.0	0.09	323.80	120.0	0.2	-0.2	0.00	0.00	0.3	Conductor Tie in
151.0	1.00	285.11	151.0	0.3	-0.5	3.00	-42.15	0.5	Build 3° / 100'
250.0	1.00	285.11	250.0	0.7	-2.2	0.00	0.00	2.3	EOB @ 1.00° Inc. / 285.11° Azm / Build 3° / 100'
1072.5	25.68	285.11	1044.1	49.8	-183.9	3.00	0.00	190.5	EOB @ 25.68° Inc. / 285.11° Azm
7901.1	25.68	285.11	7198.5	821.3	-3040.2	0.00	0.00	3148.7	Drop 3° / 100'
8757.0	0.00	0.00	8026.0	870.4	-3222.2	3.00	180.00	3337.3	EOD @ Vertical / Build 1.5° / 100'
8857.1	1.50	250.00	8126.2	870.0	-3223.5	1.50	250.00	3338.4	EOB @ 1.50° Inc. / 250.00° Azm
12620.3	1.50	250.00	11888.0	836.2	-3316.2	0.00	0.00	3420.0	TD @ 12620.3' MD / 11888.0' TVD

DESIGN TARGET DETAILS

Name	TVD	+N/-S	+E/-W	Northing	Easting	Latitude	Longitude
21B-27 - OHCR026.0	870.4	-3222.2	14422236.89	2442572.93	39.679903	-108.149239	
21B-27 - PBHL888.0	836.2	-3316.2	14422199.70	2442480.10	39.679809	-108.149573	

WELL DETAILS: BJU B26 FED 21B-27 496

Ground Level : 8211.0			
+N/-S	+E/-W	Northing	Easting
0.0	0.0	14421469.70	2445821.30
		Latitude	Longitude
		39.677515	-108.137795 21B-27



Plan: Design #2 (BJU B26 FED 21B-27 496/Wellbore #1)

Created By: Will Jircik Date: 16:44, September 04 2022



Caerus Oil & Gas

Garfield County, CO

BJU B26 496 Pad

BJU B26 FED 21B-27 496 - Slot 21B-27

Wellbore #1

Design: Wellbore #1

KLX Survey Report

04 September, 2022



Company:	Caerus Oil & Gas	Local Co-ordinate Reference:	Well BJU B26 FED 21B-27 496 - Slot 21B-27
Project:	Garfield County, CO	TVD Reference:	RKB @ 8241.0usft (30')
Site:	BJU B26 496 Pad	MD Reference:	RKB @ 8241.0usft (30')
Well:	BJU B26 FED 21B-27 496	North Reference:	True
Wellbore:	Wellbore #1	Survey Calculation Method:	Minimum Curvature
Design:	Wellbore #1	Database:	EDM 5000.1 Single User Db

Project	Garfield County, CO		
Map System:	Universal Transverse Mercator (US Survey Feet)	System Datum:	Mean Sea Level
Geo Datum:	NAD 1927 - Western US		
Map Zone:	Zone 12N (114 W to 108 W)		

Site		BJU B26 496 Pad							
Site Position:		Northing:	14,421,469.70	usft	Latitude:	39.677515			
From:	Map	Easting:	2,445,821.30	usft	Longitude:	-108.137796			
Position Uncertainty:		0.0	usft	Slot Radius:	13-3/16	"	Grid Convergence:	1.83	°

Well	BJU B26 FED 21B-27 496 - Slot 21B-27					
Well Position	+N/-S	0.0 usft	Northing:	14,421,469.70 usft	Latitude:	39.677515
	+E/-W	0.0 usft	Easting:	2,445,821.30 usft	Longitude:	-108.137796
Position Uncertainty		0.0 usft	Wellhead Elevation:	usft	Ground Level:	8,211.0 usft

Wellbore	Wellbore #1				
Magnetics	Model Name	Sample Date	Declination (°)	Dip Angle (°)	Field Strength (nT)
	HDGM2022	8/27/2022	9.22	65.72	51,055.00000000

Design	Wellbore #1				
Audit Notes:					
Version:	1.0	Phase:	ACTUAL	Tie On Depth:	0.0
Vertical Section:	Depth From (TVD) (usft)	+N/-S (usft)	+E/-W (usft)	Direction (°)	
	0.0	0.0	0.0	283.67	

Survey Program	Date	9/4/2022			
From (usft)	To (usft)	Survey (Wellbore)	Tool Name	Description	
30.0	120.0	Sfc Gyro (Wellbore #1)	GYRO-NS	OWSG Gyrocompass Gyro	
241.0	12,624.0	KLX MWD (Wellbore #1)	MWD	OWSG MWD - Standard	

Survey										
Measured Depth (usft)	Inclination (°)	Azimuth (°)	Vertical Depth (usft)	+N/-S (usft)	+E/-W (usft)	Vertical Section (usft)	Dogleg Rate (°/100usft)	Build Rate (°/100usft)	Turn Rate (°/100usft)	
0.0	0.00	0.00	0.0	0.0	0.0	0.0	0.00	0.00	0.00	
30.0	0.00	0.00	30.0	0.0	0.0	0.0	0.00	0.00	0.00	
60.0	0.18	291.20	60.0	0.0	0.0	0.0	0.60	0.60	0.00	
90.0	0.34	322.66	90.0	0.1	-0.1	0.2	0.70	0.53	104.87	
Gyro Tie-in @ 120.0' MD / 120.0' TVD										
120.0	0.09	323.80	120.0	0.2	-0.2	0.2	0.83	-0.83	3.80	
241.0	4.10	284.10	240.9	1.3	-4.5	4.6	3.33	3.31	-32.81	
333.0	6.30	284.70	332.5	3.4	-12.5	13.0	2.39	2.39	0.65	
423.0	8.80	286.80	421.7	6.7	-23.9	24.8	2.79	2.78	2.33	
514.0	10.60	284.50	511.4	10.8	-38.7	40.1	2.02	1.98	-2.53	

Company:	Caerus Oil & Gas	Local Co-ordinate Reference:	Well BJU B26 FED 21B-27 496 - Slot 21B-27
Project:	Garfield County, CO	TVD Reference:	RKB @ 8241.0usft (30')
Site:	BJU B26 496 Pad	MD Reference:	RKB @ 8241.0usft (30')
Well:	BJU B26 FED 21B-27 496	North Reference:	True
Wellbore:	Wellbore #1	Survey Calculation Method:	Minimum Curvature
Design:	Wellbore #1	Database:	EDM 5000.1 Single User Db

Survey									
Measured Depth (usft)	Inclination (°)	Azimuth (°)	Vertical Depth (usft)	+N/-S (usft)	+E/-W (usft)	Vertical Section (usft)	Dogleg Rate (°/100usft)	Build Rate (°/100usft)	Turn Rate (°/100usft)
604.0	12.60	285.20	599.6	15.4	-56.2	58.2	2.23	2.22	0.78
695.0	14.80	284.60	688.0	20.9	-77.0	79.8	2.42	2.42	-0.66
784.0	17.40	286.40	773.5	27.6	-100.8	104.4	2.97	2.92	2.02
873.0	19.60	286.40	857.9	35.5	-127.9	132.6	2.47	2.47	0.00
968.0	22.40	284.50	946.6	44.6	-160.7	166.6	3.03	2.95	-2.00
1,062.0	24.70	282.60	1,032.7	53.3	-197.2	204.2	2.58	2.45	-2.02
1,157.0	25.90	284.20	1,118.6	62.8	-236.7	244.8	1.45	1.26	1.68
1,251.0	28.30	283.70	1,202.3	73.1	-278.2	287.6	2.56	2.55	-0.53
1,348.0	28.10	285.80	1,287.8	84.7	-322.5	333.4	1.04	-0.21	2.16
1,443.0	27.00	286.30	1,372.0	96.9	-364.8	377.3	1.18	-1.16	0.53
1,536.0	28.00	285.30	1,454.5	108.6	-406.1	420.2	1.18	1.08	-1.08
1,630.0	29.70	286.10	1,536.8	120.9	-449.8	465.6	1.85	1.81	0.85
1,725.0	27.40	285.50	1,620.3	133.2	-493.4	510.9	2.44	-2.42	-0.63
1,819.0	26.70	285.20	1,704.0	144.5	-534.7	553.7	0.76	-0.74	-0.32
1,914.0	27.20	287.00	1,788.7	156.5	-576.0	596.7	1.01	0.53	1.89
2,008.0	27.20	288.40	1,872.3	169.5	-616.9	639.5	0.68	0.00	1.49
2,103.0	26.80	290.00	1,956.9	183.7	-657.7	682.5	0.87	-0.42	1.68
2,198.0	26.70	286.90	2,041.8	197.3	-698.2	725.1	1.47	-0.11	-3.26
2,292.0	26.00	286.10	2,126.0	209.1	-738.2	766.7	0.83	-0.74	-0.85
2,387.0	25.50	286.90	2,211.6	220.8	-777.8	807.9	0.64	-0.53	0.84
2,481.0	26.30	286.60	2,296.1	232.7	-817.1	848.9	0.86	0.85	-0.32
2,576.0	25.00	286.10	2,381.8	244.2	-856.6	890.0	1.39	-1.37	-0.53
2,671.0	25.90	284.20	2,467.5	254.9	-896.0	930.8	1.28	0.95	-2.00
2,766.0	26.90	283.70	2,552.6	265.1	-937.0	973.1	1.08	1.05	-0.53
2,860.0	25.60	282.30	2,636.9	274.4	-977.5	1,014.6	1.53	-1.38	-1.49
2,986.0	22.10	280.70	2,752.2	284.6	-1,027.4	1,065.5	2.82	-2.78	-1.27
3,073.0	20.00	278.60	2,833.3	289.9	-1,058.2	1,096.7	2.56	-2.41	-2.41
3,167.0	19.50	277.60	2,921.8	294.4	-1,089.6	1,128.3	0.64	-0.53	-1.06
3,262.0	19.30	277.10	3,011.4	298.4	-1,120.9	1,159.7	0.27	-0.21	-0.53
3,356.0	21.10	278.30	3,099.6	302.8	-1,153.1	1,192.0	1.96	1.91	1.28
3,451.0	23.10	280.60	3,187.7	308.7	-1,188.3	1,227.6	2.29	2.11	2.42
3,546.0	24.30	284.10	3,274.6	316.9	-1,225.6	1,265.8	1.95	1.26	3.68
3,640.0	25.30	287.90	3,360.0	327.8	-1,263.5	1,305.1	2.00	1.06	4.04
3,735.0	27.00	287.50	3,445.3	340.5	-1,303.4	1,346.9	1.80	1.79	-0.42
3,830.0	26.00	286.90	3,530.3	353.0	-1,343.8	1,389.2	1.09	-1.05	-0.63
3,925.0	26.20	289.00	3,615.6	365.9	-1,383.6	1,430.9	0.99	0.21	2.21
4,019.0	26.80	291.00	3,699.7	380.3	-1,423.0	1,472.6	1.14	0.64	2.13
4,114.0	25.80	290.70	3,784.9	395.2	-1,462.3	1,514.3	1.06	-1.05	-0.32
4,208.0	25.90	290.70	3,869.5	409.7	-1,500.7	1,555.0	0.11	0.11	0.00
4,303.0	27.20	288.80	3,954.5	424.1	-1,540.6	1,597.2	1.63	1.37	-2.00
4,397.0	27.00	288.10	4,038.1	437.6	-1,581.3	1,639.9	0.40	-0.21	-0.74
4,492.0	26.50	286.90	4,123.0	450.5	-1,622.0	1,682.5	0.77	-0.53	-1.26
4,586.0	25.50	286.80	4,207.5	462.4	-1,661.5	1,723.7	1.06	-1.06	-0.11

Company:	Caerus Oil & Gas	Local Co-ordinate Reference:	Well BJU B26 FED 21B-27 496 - Slot 21B-27
Project:	Garfield County, CO	TVD Reference:	RKB @ 8241.0usft (30')
Site:	BJU B26 496 Pad	MD Reference:	RKB @ 8241.0usft (30')
Well:	BJU B26 FED 21B-27 496	North Reference:	True
Wellbore:	Wellbore #1	Survey Calculation Method:	Minimum Curvature
Design:	Wellbore #1	Database:	EDM 5000.1 Single User Db

Survey									
Measured Depth (usft)	Inclination (°)	Azimuth (°)	Vertical Depth (usft)	+N/-S (usft)	+E/-W (usft)	Vertical Section (usft)	Dogleg Rate (°/100usft)	Build Rate (°/100usft)	Turn Rate (°/100usft)
4,681.0	26.80	286.90	4,292.7	474.5	-1,701.5	1,765.5	1.37	1.37	0.11
4,776.0	26.50	286.50	4,377.6	486.8	-1,742.4	1,808.0	0.37	-0.32	-0.42
4,870.0	27.10	284.70	4,461.5	498.2	-1,783.2	1,850.4	1.07	0.64	-1.91
4,965.0	26.70	283.00	4,546.3	508.5	-1,824.9	1,893.4	0.91	-0.42	-1.79
5,059.0	26.40	282.60	4,630.3	517.8	-1,865.9	1,935.4	0.37	-0.32	-0.43
5,154.0	27.30	282.00	4,715.1	526.9	-1,907.8	1,978.3	0.99	0.95	-0.63
5,249.0	27.00	284.30	4,799.6	536.8	-1,950.0	2,021.6	1.15	-0.32	2.42
5,344.0	25.60	283.40	4,884.8	546.9	-1,990.9	2,063.7	1.53	-1.47	-0.95
5,439.0	26.80	283.90	4,970.0	556.8	-2,031.6	2,105.7	1.28	1.26	0.53
5,533.0	26.40	284.50	5,054.1	567.1	-2,072.4	2,147.7	0.51	-0.43	0.64
5,628.0	27.60	283.20	5,138.7	577.4	-2,114.3	2,190.9	1.41	1.26	-1.37
5,723.0	26.60	282.30	5,223.3	587.0	-2,156.5	2,234.1	1.14	-1.05	-0.95
5,817.0	26.90	283.30	5,307.2	596.3	-2,197.8	2,276.4	0.58	0.32	1.06
5,912.0	27.20	283.10	5,391.9	606.2	-2,239.8	2,319.6	0.33	0.32	-0.21
6,006.0	27.00	282.50	5,475.5	615.7	-2,281.6	2,362.5	0.36	-0.21	-0.64
6,101.0	26.90	283.20	5,560.2	625.3	-2,323.6	2,405.5	0.35	-0.11	0.74
6,195.0	26.50	282.70	5,644.2	634.7	-2,364.7	2,447.7	0.49	-0.43	-0.53
6,290.0	25.90	286.30	5,729.4	645.2	-2,405.3	2,489.7	1.79	-0.63	3.79
6,385.0	27.00	289.20	5,814.5	658.1	-2,445.6	2,531.9	1.79	1.16	3.05
6,479.0	26.10	289.50	5,898.6	672.0	-2,485.2	2,573.7	0.97	-0.96	0.32
6,574.0	27.30	287.70	5,983.5	685.6	-2,525.7	2,616.2	1.52	1.26	-1.89
6,668.0	26.80	286.00	6,067.2	698.0	-2,566.6	2,658.9	0.98	-0.53	-1.81
6,763.0	26.30	285.60	6,152.2	709.6	-2,607.5	2,701.3	0.56	-0.53	-0.42
6,857.0	26.70	286.00	6,236.3	721.0	-2,647.8	2,743.2	0.47	0.43	0.43
6,952.0	26.50	285.50	6,321.2	732.6	-2,688.8	2,785.7	0.32	-0.21	-0.53
7,047.0	25.70	283.40	6,406.5	743.0	-2,729.2	2,827.5	1.29	-0.84	-2.21
7,141.0	25.00	282.20	6,491.5	751.9	-2,768.5	2,867.7	0.92	-0.74	-1.28
7,236.0	25.80	282.40	6,577.3	760.6	-2,808.3	2,908.5	0.85	0.84	0.21
7,330.0	26.30	284.90	6,661.8	770.4	-2,848.4	2,949.7	1.28	0.53	2.66
7,425.0	26.20	286.20	6,747.0	781.6	-2,888.9	2,991.7	0.61	-0.11	1.37
7,520.0	25.20	285.90	6,832.6	793.0	-2,928.4	3,032.9	1.06	-1.05	-0.32
7,614.0	24.20	286.10	6,918.0	803.8	-2,966.2	3,072.1	1.07	-1.06	0.21
7,709.0	23.20	285.50	7,004.9	814.2	-3,002.9	3,110.3	1.08	-1.05	-0.63
7,804.0	21.20	284.80	7,092.9	823.6	-3,037.6	3,146.2	2.12	-2.11	-0.74
7,898.0	20.60	285.50	7,180.7	832.4	-3,070.0	3,179.7	0.69	-0.64	0.74
7,993.0	18.80	282.90	7,270.2	840.3	-3,101.0	3,211.7	2.11	-1.89	-2.74
8,087.0	17.20	282.30	7,359.5	846.6	-3,129.3	3,240.8	1.71	-1.70	-0.64
8,182.0	14.60	282.00	7,450.9	852.1	-3,154.8	3,266.8	2.74	-2.74	-0.32
8,277.0	12.00	280.80	7,543.4	856.4	-3,176.2	3,288.6	2.75	-2.74	-1.26
8,372.0	10.20	284.50	7,636.6	860.4	-3,194.0	3,306.9	2.04	-1.89	3.89
8,466.0	9.10	280.60	7,729.2	863.8	-3,209.4	3,322.6	1.36	-1.17	-4.15
8,561.0	7.50	276.30	7,823.2	865.9	-3,222.9	3,336.3	1.81	-1.68	-4.53
8,655.0	4.30	275.10	7,916.7	866.9	-3,232.6	3,345.9	3.41	-3.40	-1.28

Company:	Caerus Oil & Gas	Local Co-ordinate Reference:	Well BJU B26 FED 21B-27 496 - Slot 21B-27
Project:	Garfield County, CO	TVD Reference:	RKB @ 8241.0usft (30')
Site:	BJU B26 496 Pad	MD Reference:	RKB @ 8241.0usft (30')
Well:	BJU B26 FED 21B-27 496	North Reference:	True
Wellbore:	Wellbore #1	Survey Calculation Method:	Minimum Curvature
Design:	Wellbore #1	Database:	EDM 5000.1 Single User Db

Survey									
Measured Depth (usft)	Inclination (°)	Azimuth (°)	Vertical Depth (usft)	+N/-S (usft)	+E/-W (usft)	Vertical Section (usft)	Dogleg Rate (°/100usft)	Build Rate (°/100usft)	Turn Rate (°/100usft)
8,750.0	3.60	273.20	8,011.5	867.4	-3,239.1	3,352.3	0.75	-0.74	-2.00
8,845.0	3.40	274.90	8,106.3	867.8	-3,244.9	3,358.0	0.24	-0.21	1.79
8,939.0	1.50	263.70	8,200.2	867.9	-3,248.9	3,361.9	2.07	-2.02	-11.91
9,034.0	0.60	272.90	8,295.2	867.8	-3,250.6	3,363.6	0.96	-0.95	9.68
9,129.0	1.00	263.70	8,390.2	867.7	-3,251.9	3,364.9	0.44	0.42	-9.68
9,224.0	1.30	96.60	8,485.2	867.5	-3,251.7	3,364.6	2.41	0.32	-175.89
9,319.0	2.60	102.40	8,580.1	866.9	-3,248.5	3,361.4	1.38	1.37	6.11
9,413.0	2.40	111.20	8,674.1	865.7	-3,244.6	3,357.3	0.46	-0.21	9.36
9,508.0	2.00	121.90	8,769.0	864.1	-3,241.3	3,353.7	0.60	-0.42	11.26
9,603.0	1.60	121.50	8,863.9	862.6	-3,238.8	3,350.9	0.42	-0.42	-0.42
9,697.0	1.00	129.70	8,957.9	861.4	-3,237.0	3,348.9	0.67	-0.64	8.72
9,791.0	1.00	158.70	9,051.9	860.1	-3,236.1	3,347.7	0.53	0.00	30.85
9,886.0	1.20	184.50	9,146.9	858.3	-3,235.9	3,347.1	0.56	0.21	27.16
9,981.0	1.10	176.00	9,241.9	856.4	-3,235.9	3,346.6	0.21	-0.11	-8.95
10,075.0	0.40	226.30	9,335.9	855.3	-3,236.1	3,346.5	0.96	-0.74	53.51
10,170.0	0.80	267.30	9,430.9	855.0	-3,237.0	3,347.3	0.59	0.42	43.16
10,264.0	0.80	260.30	9,524.8	854.9	-3,238.3	3,348.6	0.10	0.00	-7.45
10,359.0	1.40	254.60	9,619.8	854.5	-3,240.0	3,350.2	0.64	0.63	-6.00
10,454.0	1.90	249.50	9,714.8	853.6	-3,242.6	3,352.5	0.55	0.53	-5.37
10,548.0	1.20	243.00	9,808.8	852.6	-3,245.0	3,354.5	0.77	-0.74	-6.91
10,643.0	0.70	232.50	9,903.7	851.8	-3,246.3	3,355.7	0.56	-0.53	-11.05
10,738.0	1.00	229.90	9,998.7	850.9	-3,247.4	3,356.5	0.32	0.32	-2.74
10,832.0	1.30	223.70	10,092.7	849.6	-3,248.8	3,357.5	0.35	0.32	-6.60
10,927.0	1.50	228.70	10,187.7	848.0	-3,250.5	3,358.8	0.25	0.21	5.26
11,021.0	2.20	232.70	10,281.6	846.1	-3,252.8	3,360.6	0.76	0.74	4.26
11,116.0	2.20	242.60	10,376.6	844.2	-3,255.9	3,363.2	0.40	0.00	10.42
11,211.0	2.20	245.70	10,471.5	842.6	-3,259.2	3,366.0	0.13	0.00	3.26
11,305.0	1.80	236.50	10,565.4	841.0	-3,262.0	3,368.4	0.54	-0.43	-9.79
11,400.0	2.30	228.40	10,660.4	838.9	-3,264.7	3,370.5	0.61	0.53	-8.53
11,494.0	2.40	233.70	10,754.3	836.5	-3,267.7	3,372.8	0.25	0.11	5.64
11,589.0	2.60	228.20	10,849.2	833.9	-3,270.9	3,375.3	0.33	0.21	-5.79
11,683.0	2.50	228.20	10,943.1	831.1	-3,274.0	3,377.7	0.11	-0.11	0.00
11,778.0	3.30	235.70	11,038.0	828.2	-3,277.8	3,380.7	0.93	0.84	7.89
11,872.0	3.30	235.50	11,131.8	825.1	-3,282.3	3,384.3	0.01	0.00	-0.21
11,967.0	3.00	237.70	11,226.7	822.3	-3,286.7	3,387.9	0.34	-0.32	2.32
12,062.0	2.80	233.80	11,321.6	819.6	-3,290.6	3,391.1	0.30	-0.21	-4.11
12,093.0	2.80	240.60	11,352.5	818.7	-3,291.9	3,392.1	1.07	0.00	21.94
12,188.0	2.70	229.40	11,447.4	816.2	-3,295.6	3,395.2	0.57	-0.11	-11.79
12,282.0	2.20	222.00	11,541.3	813.4	-3,298.5	3,397.3	0.63	-0.53	-7.87
12,377.0	1.90	247.10	11,636.3	811.4	-3,301.2	3,399.4	0.99	-0.32	26.42
12,472.0	2.60	233.60	11,731.2	809.5	-3,304.4	3,402.1	0.92	0.74	-14.21
12,564.0	3.00	233.40	11,823.1	806.8	-3,308.0	3,405.0	0.43	0.43	-0.22
TD @ 12624.0' MD / 11883.0' TVD									
12,624.0	3.00	233.40	11,883.0	805.0	-3,310.5	3,407.0	0.00	0.00	0.00

Company:	Caerus Oil & Gas	Local Co-ordinate Reference:	Well BJU B26 FED 21B-27 496 - Slot 21B-27
Project:	Garfield County, CO	TVD Reference:	RKB @ 8241.0usft (30')
Site:	BJU B26 496 Pad	MD Reference:	RKB @ 8241.0usft (30')
Well:	BJU B26 FED 21B-27 496	North Reference:	True
Wellbore:	Wellbore #1	Survey Calculation Method:	Minimum Curvature
Design:	Wellbore #1	Database:	EDM 5000.1 Single User Db

Survey									
Measured Depth (usft)	Inclination (°)	Azimuth (°)	Vertical Depth (usft)	+N/-S (usft)	+E/-W (usft)	Vertical Section (usft)	Dogleg Rate (°/100usft)	Build Rate (°/100usft)	Turn Rate (°/100usft)

Design Annotations					
Measured Depth (usft)	Vertical Depth (usft)	Local Coordinates			
		+N/-S (usft)	+E/-W (usft)	Comment	
120.0	120.0	0.2	-0.2	Gyro Tie-in @ 120.0' MD / 120.0' TVD	
12,624.0	11,883.0	805.0	-3,310.5	TD @ 12624.0' MD / 11883.0' TVD	

Checked By: _____	Approved By: _____	Date: _____
-------------------	--------------------	-------------