

All interpretations are opinions based on inferences from electrical or other measurements and we cannot and do not guarantee the accuracy or correctness of any interpretation, and we shall not, except in the case of gross or willful negligence on our part, be liable or responsible for any loss, costs, damages, or expenses incurred or sustained by anyone resulting from any interpretation made by any of our officers, agents or employees. These interpretations are also subject to our general terms and conditions set out in our current Price Schedule.

Comments

THANK-YOU FOR USING SUPERIOR WELL SERVICES
 STERLING: 970.526.1084 FAX: 970.526.1085
 FORT LUPTON: 970.785.0158 FAX: 970.785.0159

Calibration Report

Database File: nobstatein.db
 Dataset Pathname: pass4
 Dataset Creation: Wed Jun 13 11 24 29 2012 by Log Std Casedhole 07051

Gamma Ray Calibration Report

Serial Number: tit/temp
 Tool Model: temp/tit
 Performed: Tue May 22 10:45 28 2012

Calibrator Value: 1.0 GAPI

Background Reading: -0.0 cps
 Calibrator Reading: 1.0 cps

Sensitivity: 1.0000 GAPI/cps

Cement Bond Log Calibration Report

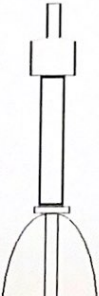
Serial Number: TEKCO-01
 Tool Model: TEKCO-1x2
 Performed: Wed Jun 13 11 41 37 2012

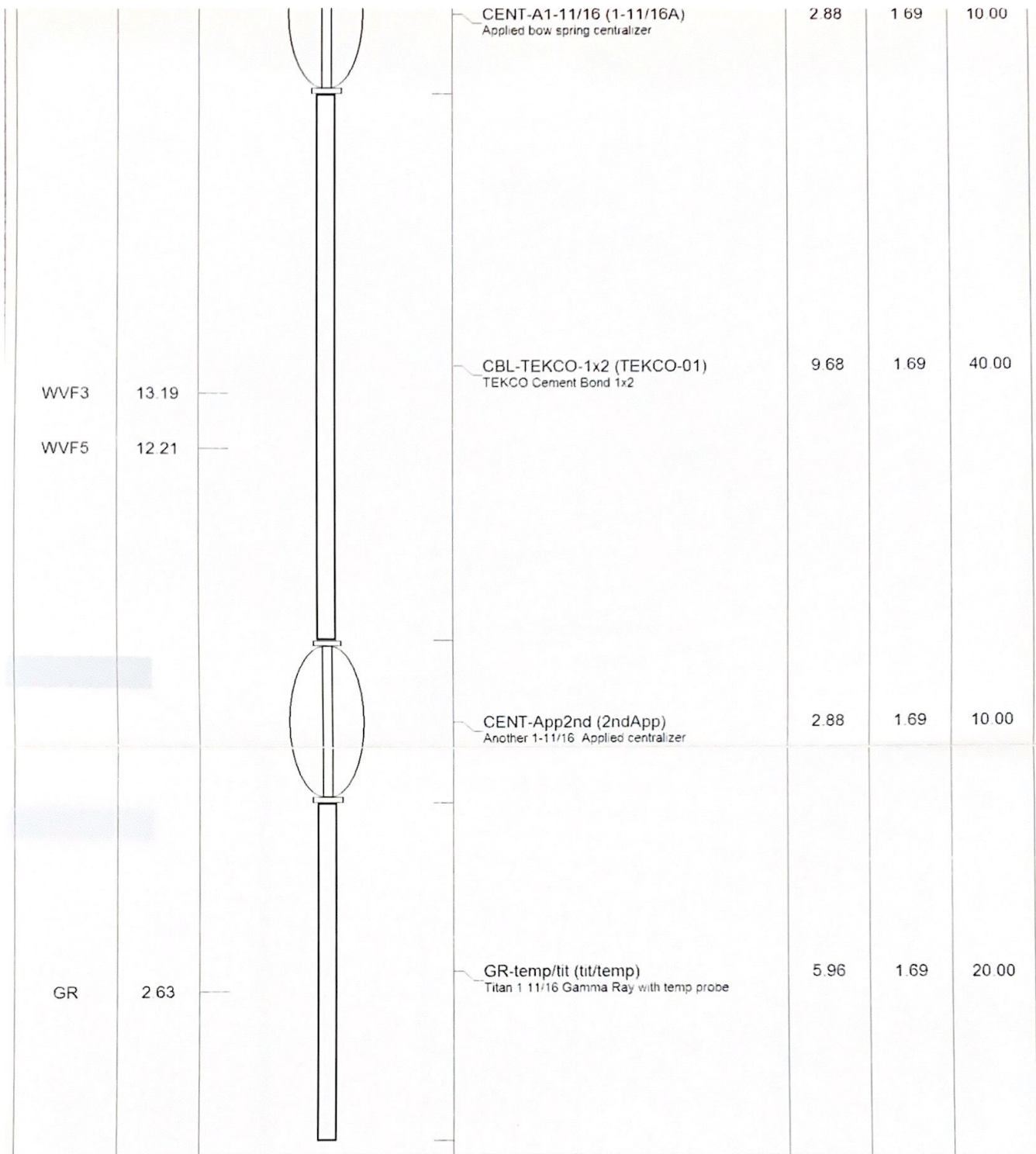
Depth: 2744.25 ft
 Casing Diameter: 3.5 in

3' Spacing: 5' Spacing

Signal Zero: 0.8 0 mV
 Calibrated Amplitude: 94.5169 94.5169 mV
 Reading at Signal Zero: -0.01425 -0.00249023 V
 Reading in Free Pipe: 1.14245 0.552075 V

Gain: 81.0209 170.434
 Offset: 1.95455 0.424421

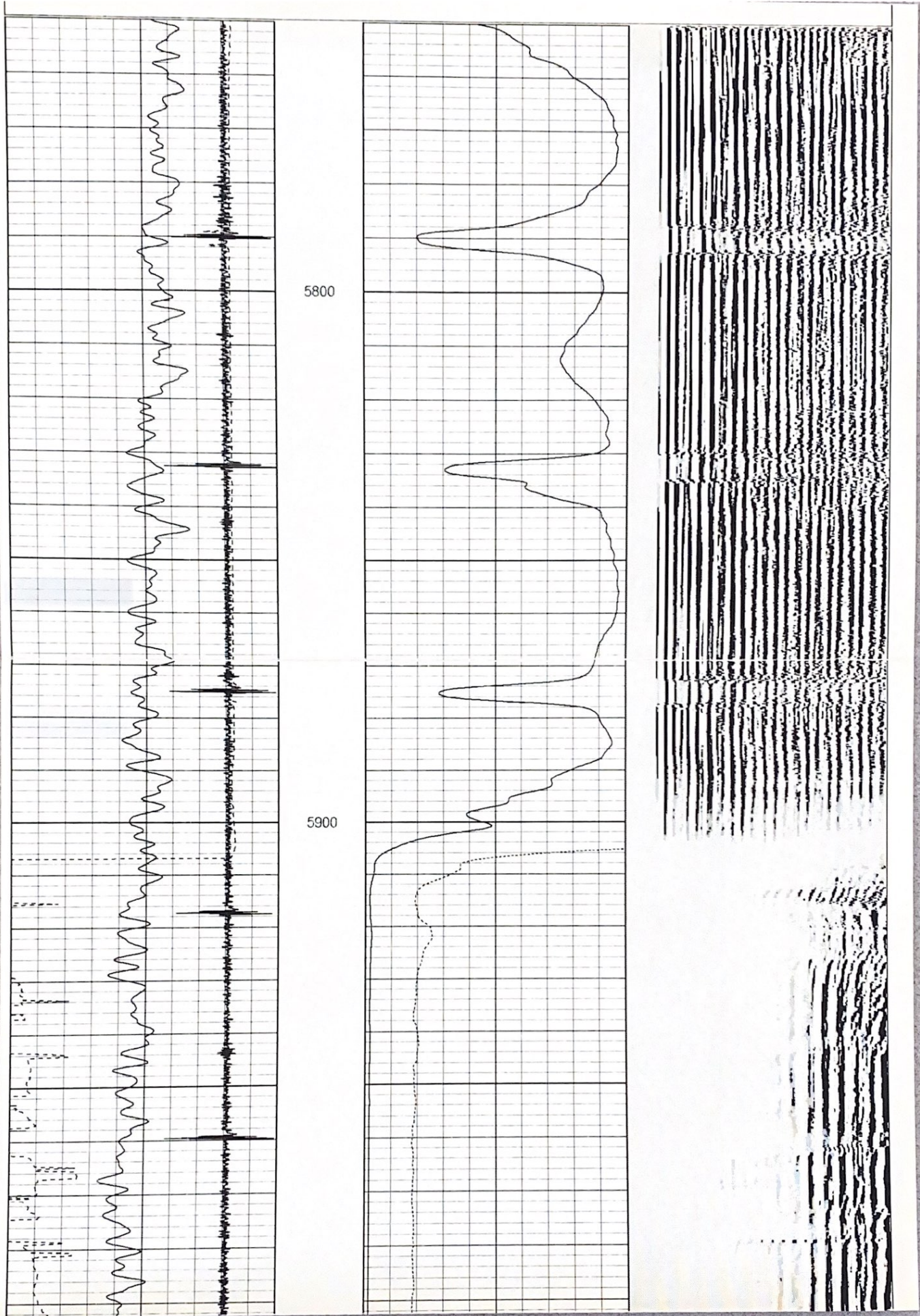
Sensor	Offset (ft)	Schematic	Description	Len (ft)	OD (in)	Wt (lb)
CCL	22.51		CHD-STNDRD (1) Standard Cable Head	1.00	1.69	5.00
			CCL-tekco (tekco1)	1.74	1.69	10.00

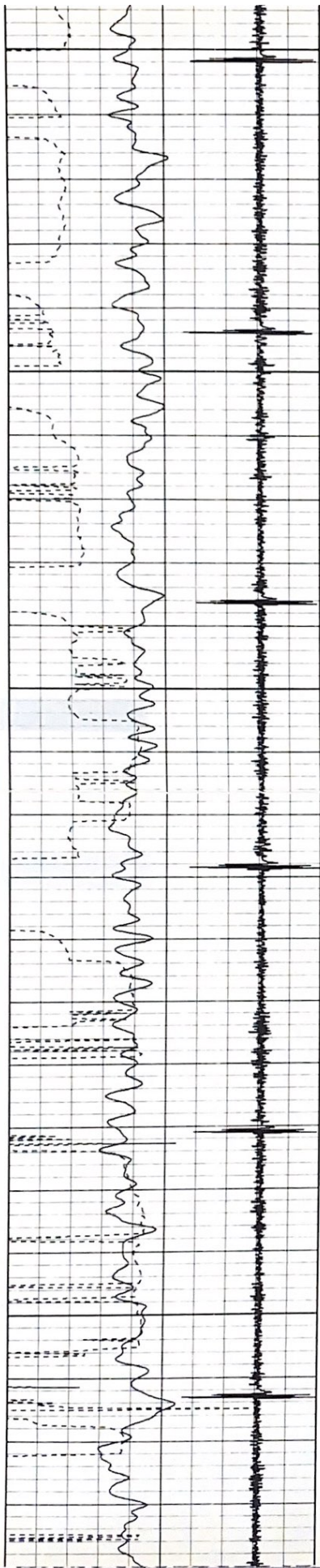


Dataset: nobstatein db: field/well/run1/pass4
 Total Length: 24.12 ft
 Total Weight: 95.00 lb
 O.D.: 1.69 in

Database File: nblstate36-12i4 db
 Dataset Pathname: pass1
 Presentation Format: bond
 Dataset Creation: Wed Jun 13 11:46:19 2012 by Log Std Casedhole 07051
 Charted by: Depth in Feet scaled 1:240

9	CCL	-2	0	Amplitude (Pipe Bond) (mV)	100	200	Variable Density	1200
0	Gamma Ray (GAPI)	200	0	Amplified Amplitude (mV)	10			
400	TT3 (usec)	200						

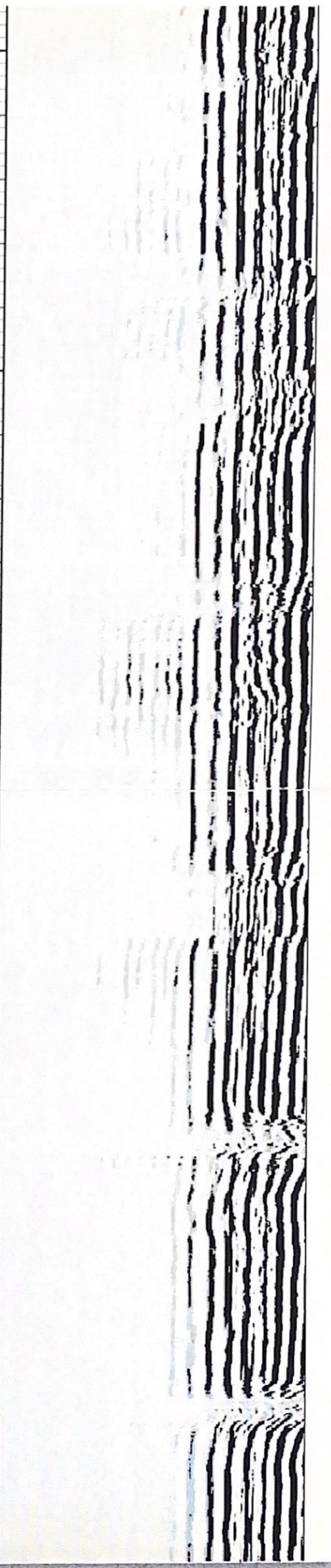
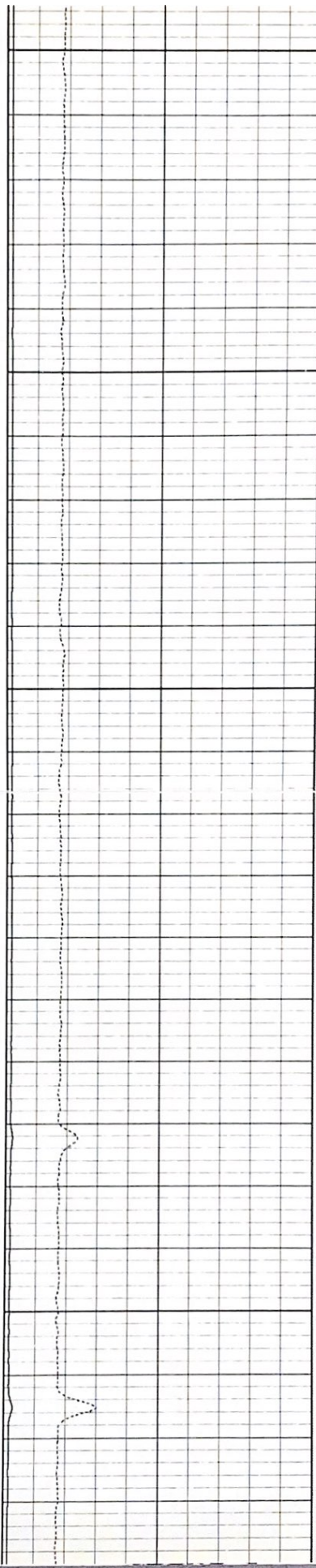


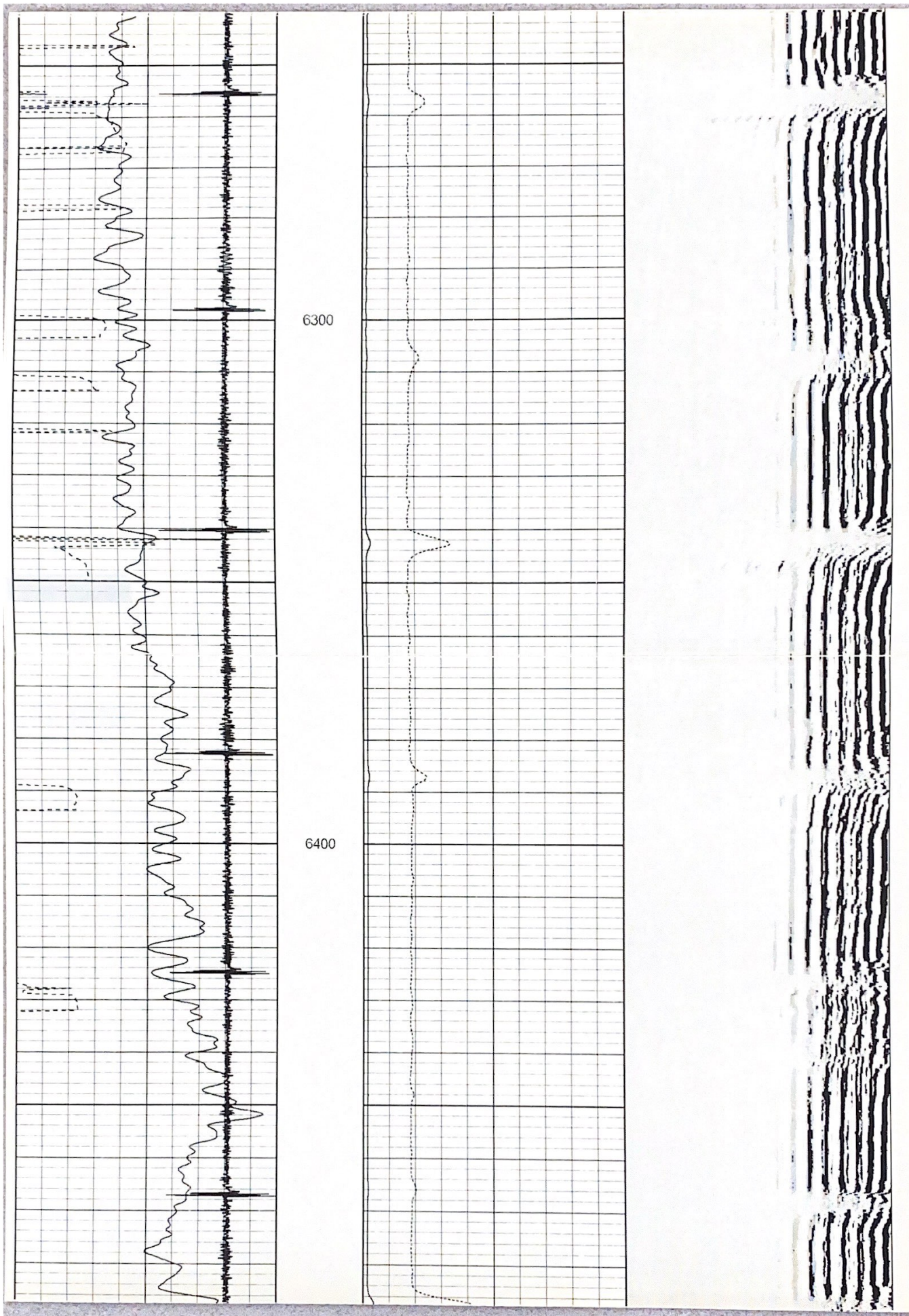


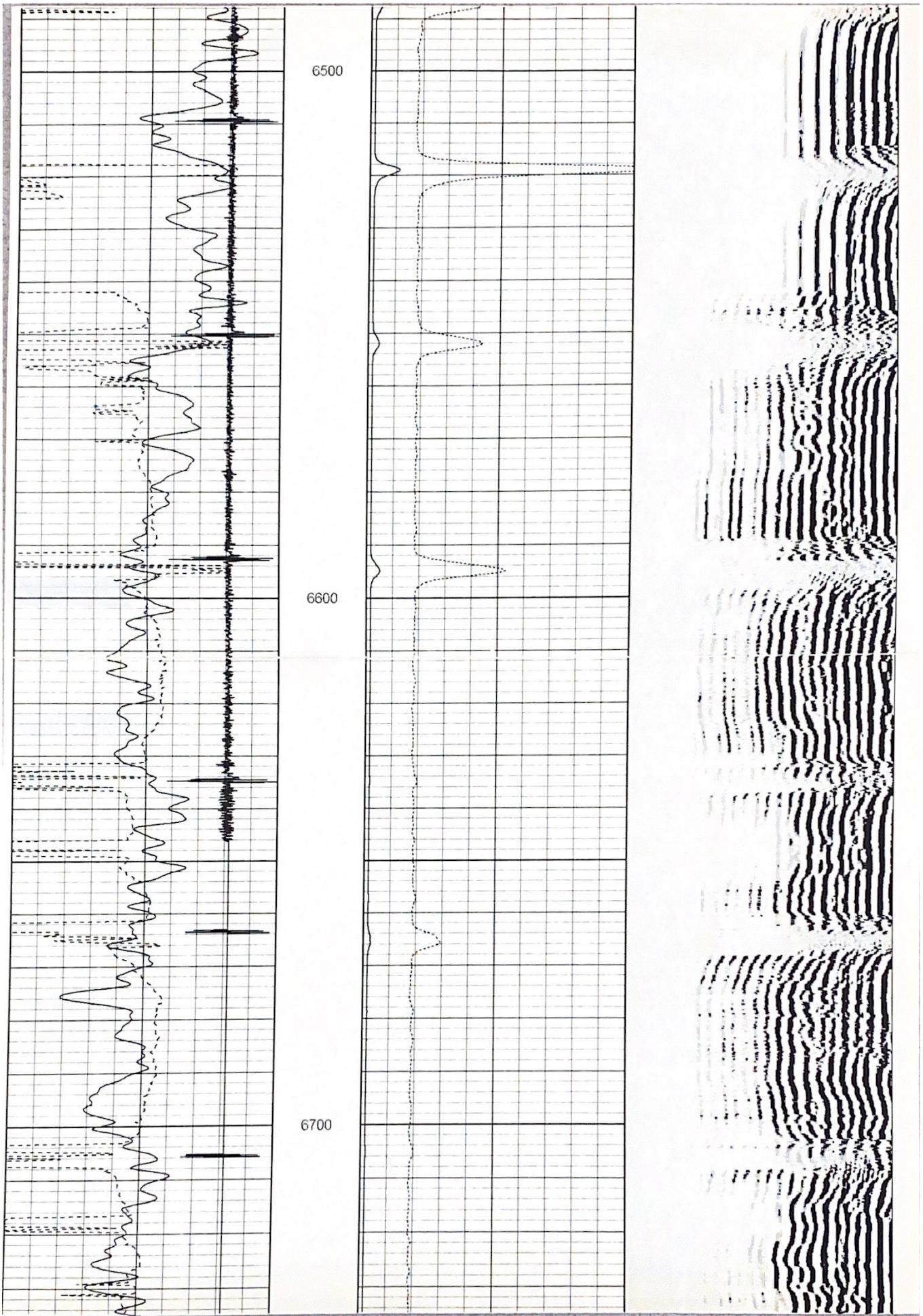
6000

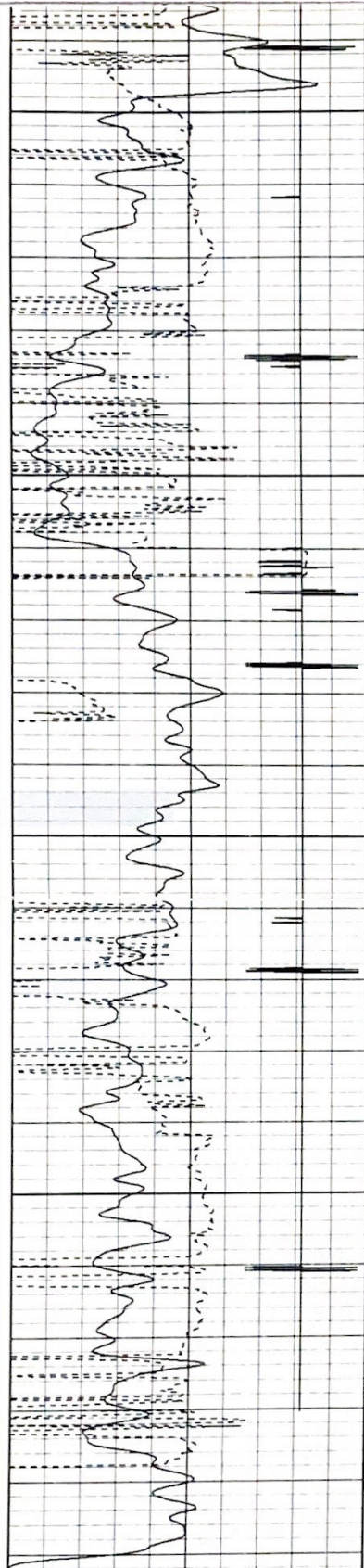
6100

6200





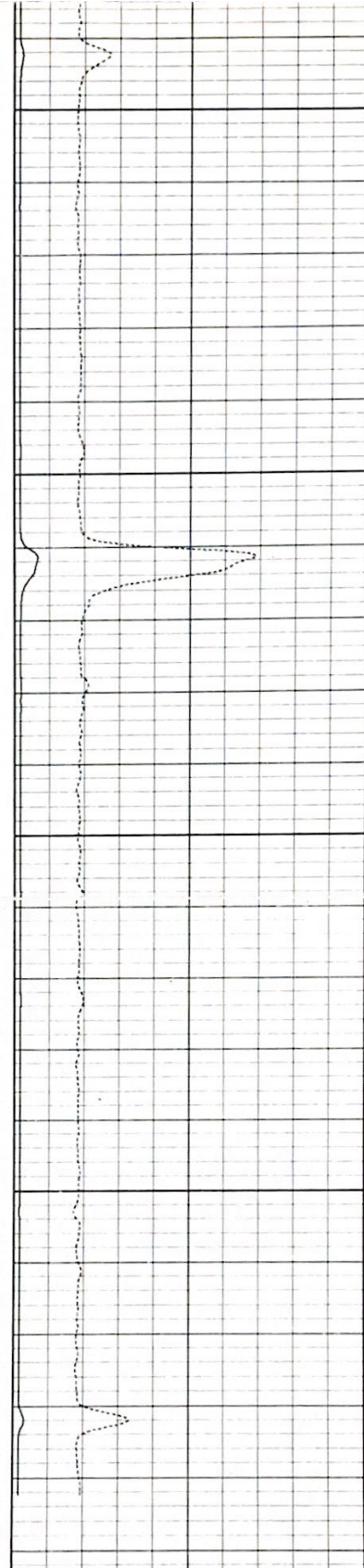




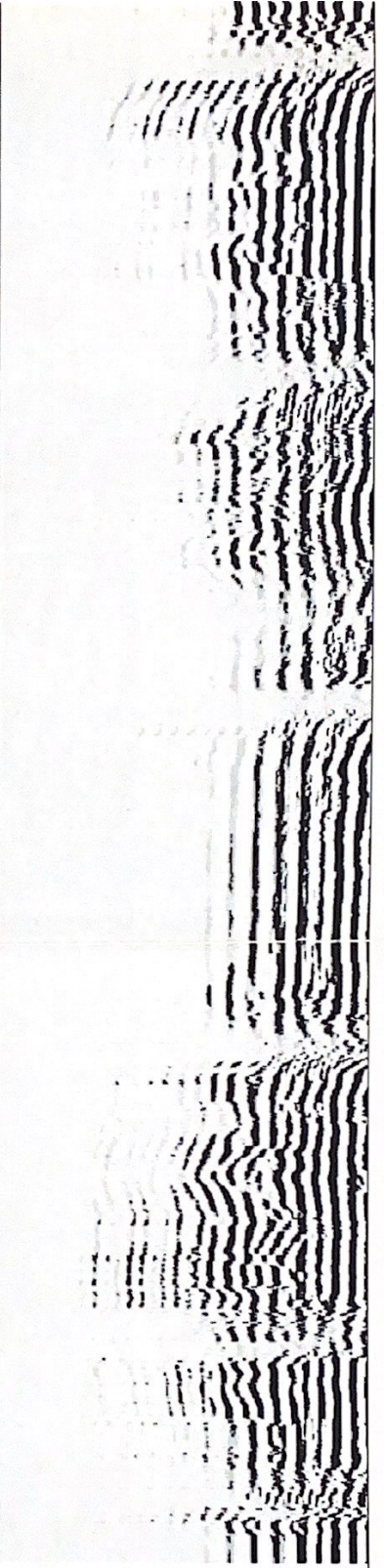
9	CCL	-2
0	Gamma Ray (GAPI)	200
400	TT3 (usec)	200

6800

6900



0	Amplitude (Pipe Bond) (mV)	100	200
0	Amplified Amplitude (mV)	10	



Variable Density 1200