

Project: Garfield County, CO
 Site: BJU B26 496 Pad
 Well: BJU B26 FED 11D-26 496
 Wellbore: Wellbore #1
 Design: Design #2
 Latitude: 39.677535
 Longitude: -108.137797
 Ground Level: 8211.0
 RKB @ 8241.0usft (30')

PROJECT DETAILS: Garfield County, CO

Geodetic System: Universal Transverse Mercator (US Survey Feet)
 Datum: NAD 1927 - Western US
 Ellipsoid: Clarke 1866
 Zone: Zone 12N (114 W to 108 W)
 System Datum: Mean Sea Level

REFERENCE INFORMATION

Vertical (TVD) Reference: RKB @ 8241.0usft (30')
 Section (VS) Reference: Slot - 11D-26(0.0N, 0.0E)
 Measured Depth Reference: RKB @ 8241.0usft (30')
 Calculation Method: Minimum Curvature

SECTION DETAILS

MD	Inc	Azi	TVD	+N/-S	+E/-W	Dleg	TFace	VSect	Annotation
120.0	0.72	78.91	120.0	0.2	0.6	0.00	0.00	-0.6	Conductor Tie In
175.5	1.00	288.29	175.5	0.4	0.5	3.00	-162.86	-0.4	EOB @ 1.00" Inc. / 288.29° Azm
350.0	1.00	288.29	350.0	1.3	-2.4	0.00	0.00	2.6	Build 3" / 100'
550.2	7.00	288.29	549.6	5.7	-15.6	3.00	0.01	16.6	EOB @ 7.00" Inc. / 288.29° Azm
6851.7	7.00	288.29	6804.1	247.0	-745.3	0.00	0.00	783.2	Drop 3" / 100'
7085.2	0.00	0.00	7037.0	251.4	-758.8	3.00	180.00	797.4	EOD @ Vertical
8135.2	0.00	0.00	8087.0	251.4	-758.8	0.00	0.00	797.4	Build 1.5" / 100'
8233.7	1.48	250.00	8185.4	251.0	-760.0	1.50	250.00	798.5	EOB @ 1.48" Inc. / 250.00° Azm
12064.5	1.48	250.00	12015.0						

DESIGN TARGET DETAILS

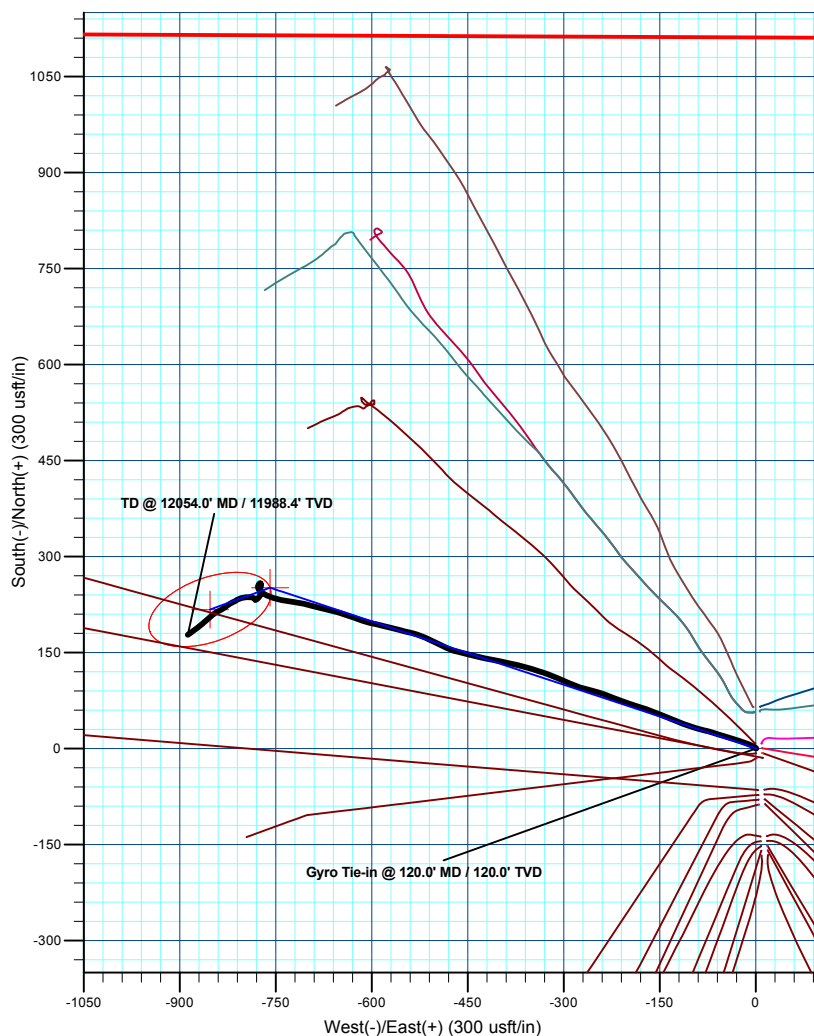
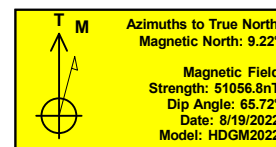
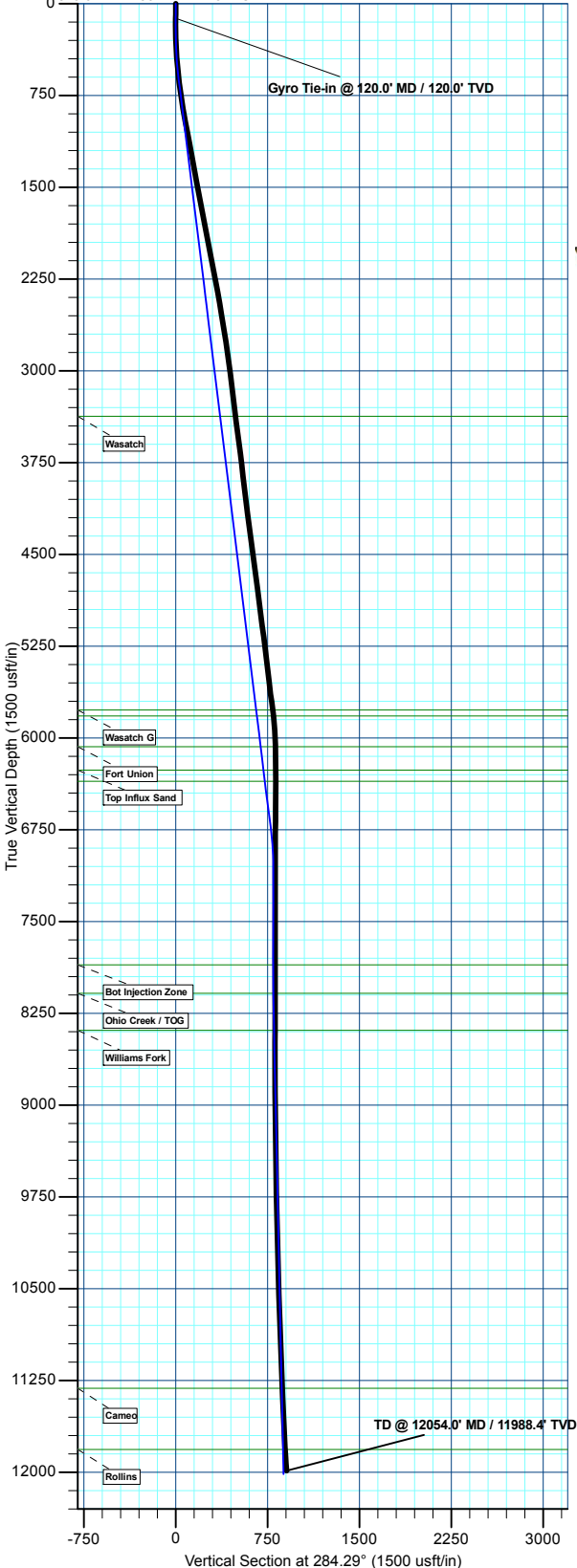
Name	TVD	+N/-S	+E/-W	Northing	Easting	Latitude	Longitude
11D-26 - OHC087.0		251.4	-758.8	14421704.29	2445054.13	39.678225	-108.140492
11D-26 - PBH2015.0		217.2	-852.8	14421667.10	2444961.30	39.678131	-108.140826

WELL DETAILS: BJU B26 FED 11D-26 496

Ground Level : 8211.0					
+N/-S	+E/-W	Northing	Easting	Latitude	Longitude
0.0	0.0	14421477.20	2445820.60	39.677535	-108.137797 11D-26

FORMATION TOP DETAILS

TVDPath	MDPath	Formation
3373.0	3394.8	Wasatch
5773.0	5812.9	Wasatch G
5820.0	5860.2	Top Injection Zone
6073.0	6115.1	Fort Union
6263.0	6306.6	Top Influx Sand
6354.0	6398.3	Bot Influx Sand
7854.0	7902.2	Bot Injection Zone
8087.0	8135.2	Ohio Creek / TOG
8391.0	8439.3	Williams Fork
11315.0	11364.3	Cameo
13815.0	11864.4	Rollins



Plan: Design #2 (BJU B26 FED 11D-26 496/Wellbore #1)

Created By: Will Jircik Date: 1:02, August 27 2022



Caerus Oil & Gas

Garfield County, CO

BJU B26 496 Pad

BJU B26 FED 11D-26 496 - Slot 11D-26

Wellbore #1

Design: Wellbore #1

KLX Survey Report

27 August, 2022



Company:	Caerus Oil & Gas	Local Co-ordinate Reference:	Well BJU B26 FED 11D-26 496 - Slot 11D-26
Project:	Garfield County, CO	TVD Reference:	RKB @ 8241.0usft (30')
Site:	BJU B26 496 Pad	MD Reference:	RKB @ 8241.0usft (30')
Well:	BJU B26 FED 11D-26 496	North Reference:	True
Wellbore:	Wellbore #1	Survey Calculation Method:	Minimum Curvature
Design:	Wellbore #1	Database:	EDM 5000.1 Single User Db

Project	Garfield County, CO		
Map System:	Universal Transverse Mercator (US Survey Feet)	System Datum:	Mean Sea Level
Geo Datum:	NAD 1927 - Western US		
Map Zone:	Zone 12N (114 W to 108 W)		

Site		BJU B26 496 Pad							
Site Position:		Northing:	14,421,469.70	usft	Latitude:	39.677515			
From:	Map	Easting:	2,445,821.30	usft	Longitude:	-108.137796			
Position Uncertainty:		0.0	usft	Slot Radius:	13-3/16	"	Grid Convergence:	1.83	°

Well	BJU B26 FED 11D-26 496 - Slot 11D-26					
Well Position	+N/-S	0.0 usft	Northing:	14,421,477.20 usft	Latitude:	39.677535
	+E/-W	0.0 usft	Easting:	2,445,820.60 usft	Longitude:	-108.137797
Position Uncertainty		0.0 usft	Wellhead Elevation:	usft	Ground Level:	8,211.0 usft

Wellbore	Wellbore #1				
Magnetics	Model Name	Sample Date	Declination (°)	Dip Angle (°)	Field Strength (nT)
	HDGM2022	8/19/2022	9.22	65.72	51,056.80000000

Design	Wellbore #1				
Audit Notes:					
Version:	1.0	Phase:	ACTUAL	Tie On Depth:	0.0
Vertical Section:	Depth From (TVD) (usft)	+N/-S (usft)	+E/-W (usft)	Direction (°)	
	0.0	0.0	0.0	281.32	

Survey Program	Date	8/27/2022			
From (usft)	To (usft)	Survey (Wellbore)	Tool Name	Description	
30.0	120.0	Sfc Gyro (Wellbore #1)	GYRO-NS	OWSG Gyrocompass Gyro	
242.0	12,054.0	KLX MWD (Wellbore #1)	MWD	OWSG MWD - Standard	

Survey										
Measured Depth (usft)	Inclination (°)	Azimuth (°)	Vertical Depth (usft)	+N/-S (usft)	+E/-W (usft)	Vertical Section (usft)	Dogleg Rate (°/100usft)	Build Rate (°/100usft)	Turn Rate (°/100usft)	
0.0	0.00	0.00	0.0	0.0	0.0	0.0	0.00	0.00	0.00	
30.0	0.00	0.00	30.0	0.0	0.0	0.0	0.00	0.00	0.00	
60.0	0.33	63.85	60.0	0.0	0.1	-0.1	1.10	1.10	0.00	
90.0	0.54	80.23	90.0	0.1	0.3	-0.3	0.81	0.70	54.60	
Gyro Tie-in @ 120.0' MD / 120.0' TVD										
120.0	0.72	78.91	120.0	0.2	0.6	-0.6	0.60	0.60	-4.40	
242.0	1.30	304.80	242.0	1.1	0.2	0.0	1.54	0.48	-109.93	
334.0	2.00	297.80	333.9	2.4	-2.0	2.5	0.79	0.76	-7.61	
423.0	3.70	299.00	422.8	4.6	-5.9	6.7	1.91	1.91	1.35	
514.0	5.70	289.00	513.5	7.5	-12.8	14.0	2.37	2.20	-10.99	

Company:	Caerus Oil & Gas	Local Co-ordinate Reference:	Well BJU B26 FED 11D-26 496 - Slot 11D-26
Project:	Garfield County, CO	TVD Reference:	RKB @ 8241.0usft (30')
Site:	BJU B26 496 Pad	MD Reference:	RKB @ 8241.0usft (30')
Well:	BJU B26 FED 11D-26 496	North Reference:	True
Wellbore:	Wellbore #1	Survey Calculation Method:	Minimum Curvature
Design:	Wellbore #1	Database:	EDM 5000.1 Single User Db

Survey									
Measured Depth (usft)	Inclination (°)	Azimuth (°)	Vertical Depth (usft)	+N/-S (usft)	+E/-W (usft)	Vertical Section (usft)	Dogleg Rate (°/100usft)	Build Rate (°/100usft)	Turn Rate (°/100usft)
604.0	6.50	287.50	603.0	10.4	-21.9	23.5	0.91	0.89	-1.67
695.0	7.60	288.30	693.3	13.9	-32.5	34.6	1.21	1.21	0.88
784.0	8.80	288.50	781.4	17.9	-44.5	47.2	1.35	1.35	0.22
873.0	9.80	286.40	869.2	22.2	-58.2	61.5	1.19	1.12	-2.36
968.0	10.90	285.20	962.7	26.8	-74.7	78.5	1.18	1.16	-1.26
1,063.0	10.70	287.70	1,056.0	31.9	-91.7	96.2	0.54	-0.21	2.63
1,157.0	11.00	286.70	1,148.3	37.1	-108.6	113.8	0.38	0.32	-1.06
1,252.0	10.60	293.50	1,241.7	43.2	-125.3	131.4	1.40	-0.42	7.16
1,347.0	10.10	292.00	1,335.1	49.8	-141.1	148.1	0.60	-0.53	-1.58
1,441.0	9.90	293.00	1,427.7	56.0	-156.2	164.1	0.28	-0.21	1.06
1,536.0	10.10	287.20	1,521.2	61.7	-171.6	180.4	1.08	0.21	-6.11
1,630.0	11.70	287.90	1,613.5	67.1	-188.6	198.1	1.71	1.70	0.74
1,725.0	10.60	290.10	1,706.7	73.0	-205.9	216.3	1.24	-1.16	2.32
1,820.0	10.60	291.90	1,800.1	79.3	-222.3	233.5	0.35	0.00	1.89
1,914.0	10.80	288.80	1,892.5	85.3	-238.6	250.7	0.65	0.21	-3.30
2,009.0	11.30	284.10	1,985.7	90.5	-256.1	268.9	1.08	0.53	-4.95
2,104.0	12.00	287.50	2,078.8	95.7	-274.5	288.0	1.03	0.74	3.58
2,198.0	11.10	293.20	2,170.9	102.2	-292.2	306.5	1.55	-0.96	6.06
2,293.0	10.60	294.30	2,264.2	109.4	-308.5	324.0	0.57	-0.53	1.16
2,387.0	9.80	291.10	2,356.7	115.9	-323.9	340.3	1.04	-0.85	-3.40
2,482.0	9.40	285.60	2,450.4	120.8	-338.9	356.0	1.05	-0.42	-5.79
2,577.0	9.70	288.20	2,544.0	125.4	-354.0	371.7	0.55	0.32	2.74
2,671.0	8.60	283.80	2,636.9	129.6	-368.3	386.6	1.39	-1.17	-4.68
2,766.0	8.90	282.60	2,730.7	132.9	-382.4	401.0	0.37	0.32	-1.26
2,860.0	8.70	281.70	2,823.6	135.9	-396.4	415.4	0.26	-0.21	-0.96
2,955.0	8.30	279.00	2,917.6	138.4	-410.2	429.4	0.59	-0.42	-2.84
2,973.0	8.30	280.10	2,935.4	138.9	-412.8	432.0	0.88	0.00	6.11
3,056.0	7.00	282.70	3,017.7	141.0	-423.6	443.1	1.62	-1.57	3.13
3,151.0	6.70	283.40	3,112.0	143.6	-434.7	454.4	0.33	-0.32	0.74
3,245.0	7.20	283.80	3,205.3	146.3	-445.7	465.8	0.53	0.53	0.43
3,340.0	6.70	284.30	3,299.6	149.1	-456.9	477.3	0.53	-0.53	0.53
3,434.0	6.60	283.10	3,393.0	151.6	-467.5	488.1	0.18	-0.11	-1.28
3,529.0	8.10	294.30	3,487.2	155.6	-478.9	500.1	2.18	1.58	11.79
3,623.0	8.10	295.30	3,580.2	161.2	-490.9	513.0	0.15	0.00	1.06
3,718.0	7.40	295.70	3,674.4	166.7	-502.5	525.4	0.74	-0.74	0.42
3,812.0	6.70	294.80	3,767.7	171.6	-512.9	536.6	0.75	-0.74	-0.96
3,907.0	5.80	291.90	3,862.1	175.7	-522.4	546.7	1.00	-0.95	-3.05
4,002.0	6.80	285.90	3,956.5	179.1	-532.2	557.0	1.26	1.05	-6.32
4,096.0	6.60	282.30	4,049.9	181.7	-542.9	568.0	0.49	-0.21	-3.83
4,191.0	8.00	286.20	4,144.1	184.7	-554.6	580.0	1.56	1.47	4.11
4,286.0	8.00	283.00	4,238.2	188.1	-567.3	593.2	0.47	0.00	-3.37
4,380.0	7.80	283.60	4,331.3	191.1	-579.9	606.1	0.23	-0.21	0.64
4,475.0	7.30	282.80	4,425.5	193.9	-592.1	618.6	0.54	-0.53	-0.84

Company:	Caerus Oil & Gas	Local Co-ordinate Reference:	Well BJU B26 FED 11D-26 496 - Slot 11D-26
Project:	Garfield County, CO	TVD Reference:	RKB @ 8241.0usft (30')
Site:	BJU B26 496 Pad	MD Reference:	RKB @ 8241.0usft (30')
Well:	BJU B26 FED 11D-26 496	North Reference:	True
Wellbore:	Wellbore #1	Survey Calculation Method:	Minimum Curvature
Design:	Wellbore #1	Database:	EDM 5000.1 Single User Db

Survey									
Measured Depth (usft)	Inclination (°)	Azimuth (°)	Vertical Depth (usft)	+N/-S (usft)	+E/-W (usft)	Vertical Section (usft)	Dogleg Rate (°/100usft)	Build Rate (°/100usft)	Turn Rate (°/100usft)
4,569.0	7.20	283.40	4,518.7	196.6	-603.6	630.5	0.13	-0.11	0.64
4,664.0	7.60	289.20	4,612.9	200.0	-615.3	642.7	0.89	0.42	6.11
4,758.0	7.40	290.10	4,706.1	204.2	-626.9	654.8	0.25	-0.21	0.96
4,853.0	7.30	287.70	4,800.4	208.1	-638.4	666.8	0.34	-0.11	-2.53
4,948.0	6.50	288.20	4,894.7	211.6	-649.3	678.2	0.84	-0.84	0.53
5,042.0	7.60	284.80	4,988.0	214.9	-660.3	689.7	1.25	1.17	-3.62
5,137.0	7.80	282.40	5,082.1	217.9	-672.7	702.4	0.40	0.21	-2.53
5,231.0	7.60	284.60	5,175.2	220.8	-684.9	715.0	0.38	-0.21	2.34
5,326.0	7.00	283.70	5,269.5	223.7	-696.6	727.0	0.64	-0.63	-0.95
5,421.0	6.80	282.70	5,363.8	226.4	-707.8	738.4	0.25	-0.21	-1.05
5,515.0	6.50	280.80	5,457.2	228.6	-718.4	749.3	0.40	-0.32	-2.02
5,610.0	6.30	276.70	5,551.6	230.2	-728.9	759.9	0.52	-0.21	-4.32
5,705.0	7.00	280.20	5,645.9	231.8	-739.7	770.9	0.85	0.74	3.68
5,800.0	7.50	286.90	5,740.2	234.7	-751.4	782.8	1.03	0.53	7.05
5,895.0	6.50	293.00	5,834.5	238.6	-762.3	794.3	1.31	-1.05	6.42
5,989.0	5.40	304.60	5,928.0	243.1	-770.8	803.5	1.73	-1.17	12.34
6,084.0	4.00	326.20	6,022.6	248.4	-776.3	810.0	2.35	-1.47	22.74
6,178.0	2.20	3.50	6,116.5	253.0	-778.0	812.6	2.78	-1.91	39.68
6,273.0	1.40	40.20	6,211.5	255.7	-777.2	812.2	1.44	-0.84	38.63
6,367.0	1.00	31.20	6,305.4	257.2	-776.0	811.4	0.47	-0.43	-9.57
6,462.0	0.60	49.40	6,400.4	258.3	-775.2	810.8	0.49	-0.42	19.16
6,557.0	0.10	99.20	6,495.4	258.6	-774.7	810.4	0.57	-0.53	52.42
6,651.0	0.20	77.20	6,589.4	258.6	-774.5	810.2	0.12	0.11	-23.40
6,746.0	0.40	155.30	6,684.4	258.4	-774.2	809.9	0.43	0.21	82.21
6,840.0	0.30	142.00	6,778.4	257.9	-773.9	809.5	0.14	-0.11	-14.15
6,935.0	0.00	169.20	6,873.4	257.7	-773.8	809.3	0.32	-0.32	0.00
7,029.0	0.20	143.90	6,967.4	257.5	-773.7	809.2	0.21	0.21	0.00
7,124.0	0.30	201.30	7,062.4	257.2	-773.6	809.1	0.27	0.11	60.42
7,219.0	0.40	178.90	7,157.4	256.6	-773.7	809.1	0.18	0.11	-23.58
7,313.0	0.20	166.80	7,251.4	256.1	-773.7	808.9	0.22	-0.21	-12.87
7,408.0	0.50	171.10	7,346.4	255.5	-773.6	808.7	0.32	0.32	4.53
7,503.0	0.30	173.30	7,441.4	254.9	-773.5	808.5	0.21	-0.21	2.32
7,597.0	0.60	165.90	7,535.4	254.2	-773.3	808.2	0.32	0.32	-7.87
7,692.0	0.50	191.40	7,630.4	253.3	-773.3	808.0	0.28	-0.11	26.84
7,786.0	0.40	215.50	7,724.4	252.6	-773.6	808.1	0.23	-0.11	25.64
7,881.0	0.50	199.50	7,819.4	251.9	-773.9	808.3	0.17	0.11	-16.84
7,976.0	0.40	178.80	7,914.4	251.2	-774.0	808.3	0.20	-0.11	-21.79
8,070.0	0.60	207.80	8,008.4	250.5	-774.3	808.4	0.34	0.21	30.85
8,165.0	0.70	203.50	8,103.4	249.5	-774.7	808.6	0.12	0.11	-4.53
8,259.0	1.10	177.30	8,197.4	248.1	-774.9	808.5	0.60	0.43	-27.87
8,354.0	0.90	179.00	8,292.4	246.4	-774.9	808.2	0.21	-0.21	1.79
8,449.0	1.10	177.50	8,387.4	244.7	-774.8	807.8	0.21	0.21	-1.58
8,544.0	1.20	168.30	8,482.3	242.9	-774.6	807.2	0.22	0.11	-9.68

Company:	Caerus Oil & Gas	Local Co-ordinate Reference:	Well BJU B26 FED 11D-26 496 - Slot 11D-26
Project:	Garfield County, CO	TVD Reference:	RKB @ 8241.0usft (30')
Site:	BJU B26 496 Pad	MD Reference:	RKB @ 8241.0usft (30')
Well:	BJU B26 FED 11D-26 496	North Reference:	True
Wellbore:	Wellbore #1	Survey Calculation Method:	Minimum Curvature
Design:	Wellbore #1	Database:	EDM 5000.1 Single User Db

Survey									
Measured Depth (usft)	Inclination (°)	Azimuth (°)	Vertical Depth (usft)	+N/-S (usft)	+E/-W (usft)	Vertical Section (usft)	Dogleg Rate (°/100usft)	Build Rate (°/100usft)	Turn Rate (°/100usft)
8,638.0	1.10	169.40	8,576.3	241.0	-774.2	806.4	0.11	-0.11	1.17
8,733.0	1.30	204.10	8,671.3	239.1	-774.5	806.3	0.78	0.21	36.53
8,827.0	1.50	225.20	8,765.3	237.3	-775.8	807.3	0.58	0.21	22.45
8,922.0	0.90	221.50	8,860.2	235.9	-777.2	808.3	0.64	-0.63	-3.89
9,111.0	1.00	225.70	9,049.2	233.6	-779.3	810.0	0.06	0.05	2.22
9,206.0	1.30	241.40	9,144.2	232.5	-780.9	811.3	0.46	0.32	16.53
9,300.0	0.30	297.50	9,238.2	232.1	-782.0	812.4	1.23	-1.06	59.68
9,395.0	0.80	10.40	9,333.2	232.9	-782.1	812.6	0.81	0.53	76.74
9,490.0	0.70	319.80	9,428.2	234.0	-782.4	813.1	0.68	-0.11	-53.26
9,584.0	1.10	292.20	9,522.2	234.7	-783.6	814.4	0.62	0.43	-29.36
9,679.0	1.30	296.30	9,617.1	235.6	-785.4	816.3	0.23	0.21	4.32
9,774.0	1.20	279.20	9,712.1	236.2	-787.3	818.4	0.40	-0.11	-18.00
9,868.0	1.50	279.20	9,806.1	236.6	-789.5	820.6	0.32	0.32	0.00
9,963.0	1.80	270.40	9,901.1	236.8	-792.2	823.3	0.41	0.32	-9.26
10,057.0	1.10	268.20	9,995.0	236.7	-794.6	825.6	0.75	-0.74	-2.34
10,152.0	1.10	257.90	10,090.0	236.5	-796.4	827.4	0.21	0.00	-10.84
10,246.0	1.80	262.10	10,184.0	236.1	-798.8	829.6	0.75	0.74	4.47
10,341.0	1.60	265.80	10,278.9	235.8	-801.6	832.3	0.24	-0.21	3.89
10,436.0	1.70	246.00	10,373.9	235.2	-804.2	834.7	0.61	0.11	-20.84
10,530.0	2.10	244.00	10,467.8	233.8	-807.0	837.2	0.43	0.43	-2.13
10,625.0	2.00	242.70	10,562.8	232.3	-810.0	839.9	0.12	-0.11	-1.37
10,719.0	2.30	242.00	10,656.7	230.7	-813.2	842.6	0.32	0.32	-0.74
10,814.0	2.80	244.90	10,751.6	228.8	-816.9	846.0	0.54	0.53	3.05
10,909.0	3.30	238.10	10,846.5	226.4	-821.4	849.8	0.65	0.53	-7.16
11,003.0	3.30	235.20	10,940.3	223.4	-825.9	853.7	0.18	0.00	-3.09
11,098.0	3.40	234.80	11,035.2	220.2	-830.4	857.5	0.11	0.11	-0.42
11,193.0	3.30	237.30	11,130.0	217.1	-835.0	861.4	0.19	-0.11	2.63
11,287.0	3.30	243.70	11,223.9	214.4	-839.7	865.5	0.39	0.00	6.81
11,382.0	3.30	238.50	11,318.7	211.8	-844.5	869.7	0.31	0.00	-5.47
11,476.0	3.70	227.70	11,412.5	208.4	-849.1	873.4	0.82	0.43	-11.49
11,571.0	4.10	230.20	11,507.3	204.1	-853.9	877.4	0.46	0.42	2.63
11,665.0	4.60	228.00	11,601.0	199.4	-859.3	881.8	0.56	0.53	-2.34
11,760.0	4.90	230.10	11,695.7	194.3	-865.3	886.6	0.36	0.32	2.21
11,854.0	5.60	231.70	11,789.3	188.9	-871.9	892.1	0.76	0.74	1.70
11,949.0	5.60	236.10	11,883.9	183.4	-879.4	898.3	0.45	0.00	4.63
11,994.0	5.40	235.20	11,928.7	181.0	-883.0	901.3	0.48	-0.44	-2.00
TD @ 12054.0' MD / 11988.4' TVD									
12,054.0	5.40	235.20	11,988.4	177.8	-887.6	905.3	0.00	0.00	0.00

Company:	Caerus Oil & Gas	Local Co-ordinate Reference:	Well BJU B26 FED 11D-26 496 - Slot 11D-26
Project:	Garfield County, CO	TVD Reference:	RKB @ 8241.0usft (30')
Site:	BJU B26 496 Pad	MD Reference:	RKB @ 8241.0usft (30')
Well:	BJU B26 FED 11D-26 496	North Reference:	True
Wellbore:	Wellbore #1	Survey Calculation Method:	Minimum Curvature
Design:	Wellbore #1	Database:	EDM 5000.1 Single User Db

Design Annotations					
Measured Depth (usft)	Vertical Depth (usft)	Local Coordinates			
		+N/-S (usft)	+E/-W (usft)	Comment	
120.0	120.0	0.2	0.6	Gyro Tie-in @ 120.0' MD / 120.0' TVD	
12,054.0	11,988.4	177.8	-887.6	TD @ 12054.0' MD / 11988.4' TVD	

Checked By: _____ Approved By: _____ Date: _____