



---

# **Caerus Operating LLC**

## **LONG STRING POST JOB REPORT**

**BJU B26 FED #11D-26-496 05-045-24459**  
**S:26 T:4S R:96W Garfield CO**

CallSheet #: 83129  
Proposal #: 62712



**LONG STRING Post Job Report**

**Attention:** Mr. Cole Walton | (720) 880-6325 | cwalton@caerusoilandgas.com

Caerus Operating LLC

1001 17TH STREET | DENVER, CO 80202

---

Dear Mr. Cole Walton,

Thank you for the opportunity to provide cementing services on this well. American Cementing strives to achieve complete customer satisfaction. If you have any questions regarding the services or data provided, please contact American Cementing at any time.

Sincerely,

**Holly Mbugua**

Field Engineer II | (720) 505-1300 | holly.mbugua@americacementing.com

**Field Office**      28730 US-6, Rifle, CO 81650  
Phone: (970) 657-1157

## Job Details & Summary

### Geometry

Type	Function	OD (in)	ID (in)	Weight (lb/ft)	Thread	Top (ft)	Bottom (ft)	Excess (%)
Casing	Outer	9.625	8.921	36	n/a	0	3000	0
Open Hole	Outer	n/a	8.75	n/a	n/a	3000	7095	25
Open Hole	Outer	n/a	8.75	n/a	n/a	7095	12054	0
Casing	Inner	4.5	4	11.6	n/a	0	12054	0

### Equipment / People

Unit Type	Unit	Power Unit	Employee #1
Field Storage Silo	FSS(CTS)-469		
Field Storage Silo	FSS(CTS)-468		
AS Cement Trailer Float	CTF-9299	TRH(TRB)-769	Dragon, Shane
AS Cement Trailer Float	CTF-9309	TRC(TRB)-194	Hansen, James
AS Cement Trailer Float	CTF-7145	TRH(TRB)-769	Dragon, Shane
AS Cement Trailer Float	CTF-019	TRC(TRB)-194	Hansen, James
Cement Trailer Float	CTF-273	TRC(TRB)-425	Morales, Adrian
Cement Pump Float	CPF-052	TRH-1137	Brady, Shawn
Light Duty Vehicles	LDV-062		Lancaster, Stephen

### Timing

Event	Date/Time
Call Out	8/27/2022 06:00
Depart Facility	8/27/2022 11:15
On Location	8/27/2022 12:05
Rig Up Iron	8/27/2022 12:08
Job Started	8/27/2022 16:10
Job Completed	8/27/2022 19:43
Rig Down Iron	8/27/2022 19:46
Depart Location	8/27/2022 21:45

### General Job Information

Metrics	Value
Well Fluid Density	10.6 lb/gal
Well Fluid Type	WBM
Rig Circulation Vol	1340 bbls
Rig Circulation Time	1.5 hours
Calculated Displacement	186 bbls
Actual Displacement	186 bbls
Total Spacer to Surface	0 bbls
Total CMT to Surface	0 bbls
Well Topped Out	N/A

### Job Details

Metrics	Value
Flare Prior to Job	No
Flare Prior to Job	0 units
Flare During Job	No
Flare During Job	0 units
Flare at End of Job	No
Flare at End of Job	0 units
Well Full Prior to Job	Yes
Well Fluid Density Into Well	10.65 lb/gal
Well Fluid Density Out of Well	10.65 lb/gal

### Job Details (cont.)

Metrics	Value
BHCT	215 °F
BHST	283 °F

### Water Analysis

Metrics	Value	Recommended
Water Source	None	
Temperature	80 °F	50-80 °F
pH Level	7	5.5-8.5
Chlorides	76 mg/L	0-3000 mg/L
Total Alkalinity	130	0-1000
Total Hardness	80 mg/L	0-500 mg/L
Carbonates	NA mg/L	0-100 mg/L
Sulfates	200 mg/L	0-1500 mg/L
Potassium	460 mg/L	0-3000 mg/L
Iron	0 mg/L	0-300 mg/L

### Circulation

Lost Circulation Experienced
No

## Job Execution Information

Fluid	Product	Function	Density (lb/gal)	Yield (ft <sup>3</sup> /sk)	Water Rq. (gal/sk)	Water Rq. (gal/bbl)	Volume (sks)	Volume (bbl)	Designed Top (ft)
1	Mud Flush	Flush	8.45			40.86		20.00	653
2	Scavenger	Scavenger	11.50	2.76	16.68		235.00	115.48	1000
3	Lead	Lead	12.70	2.00	11.00		722.00	257.44	3000
4	Tail	Tail	13.50	2.00	9.66		830.00	295.16	6765
5	Water + KCL Sub	DisplacementFinal	8.34			42.00		187.00	0

## Job Fluid Details

Fluid	Type	Fluid	Product	Function	Conc.	Uom
1	Flush	Mud Flush	SAPP	Surfactant	10.00	lb/bbl
1	Flush	Mud Flush	SS-201	Surfactant	0.50	gal/bbl
2	Scavenger	Scavenger	ASTM TYPE I/II	Cement	100.00	%
2	Scavenger	Scavenger	BA-60	GasMigration	0.30	%BWOB
2	Scavenger	Scavenger	FP-24	Defoamer	0.30	%BWOB
2	Scavenger	Scavenger	GW-86	Viscosifier	0.20	%BWOB
2	Scavenger	Scavenger	IntegraSeal PHENO	LostCirculation	3.00	lb/sk
2	Scavenger	Scavenger	R-3	Retarder	0.50	%BWOB
2	Scavenger	Scavenger	STATIC FREE	Other	0.01	lb/sk
3	Lead	Lead	ASTM TYPE I/II	Cement	100.00	%
3	Lead	Lead	BA-60	GasMigration	0.30	%BWOB
3	Lead	Lead	FL-66	FluidLoss	0.50	%BWOB
3	Lead	Lead	FP-24	Defoamer	0.30	%BWOB
3	Lead	Lead	GW-86	Viscosifier	0.10	%BWOB
3	Lead	Lead	IntegraSeal PHENO	LostCirculation	3.00	lb/sk
3	Lead	Lead	R-3	Retarder	0.30	%BWOB
3	Lead	Lead	STATIC FREE	Other	0.01	lb/sk
4	Tail	Tail	CLASS G	Cement	70.00	%
4	Tail	Tail	FLY ASH (POZZOLAN)	Extender	30.00	%
4	Tail	Tail	BA-60	GasMigration	0.20	%BWOB
4	Tail	Tail	BENTONITE	Viscosifier	8.00	%BWOB
4	Tail	Tail	FL-24	FluidLoss	0.40	%BWOB
4	Tail	Tail	FP-24	Defoamer	0.30	%BWOB
4	Tail	Tail	IntegraSeal PHENO	LostCirculation	3.00	lb/sk
4	Tail	Tail	R-3	Retarder	0.25	%BWOB
4	Tail	Tail	S-8	StrengthRetrogression	25.00	%BWOB

## Job Logs

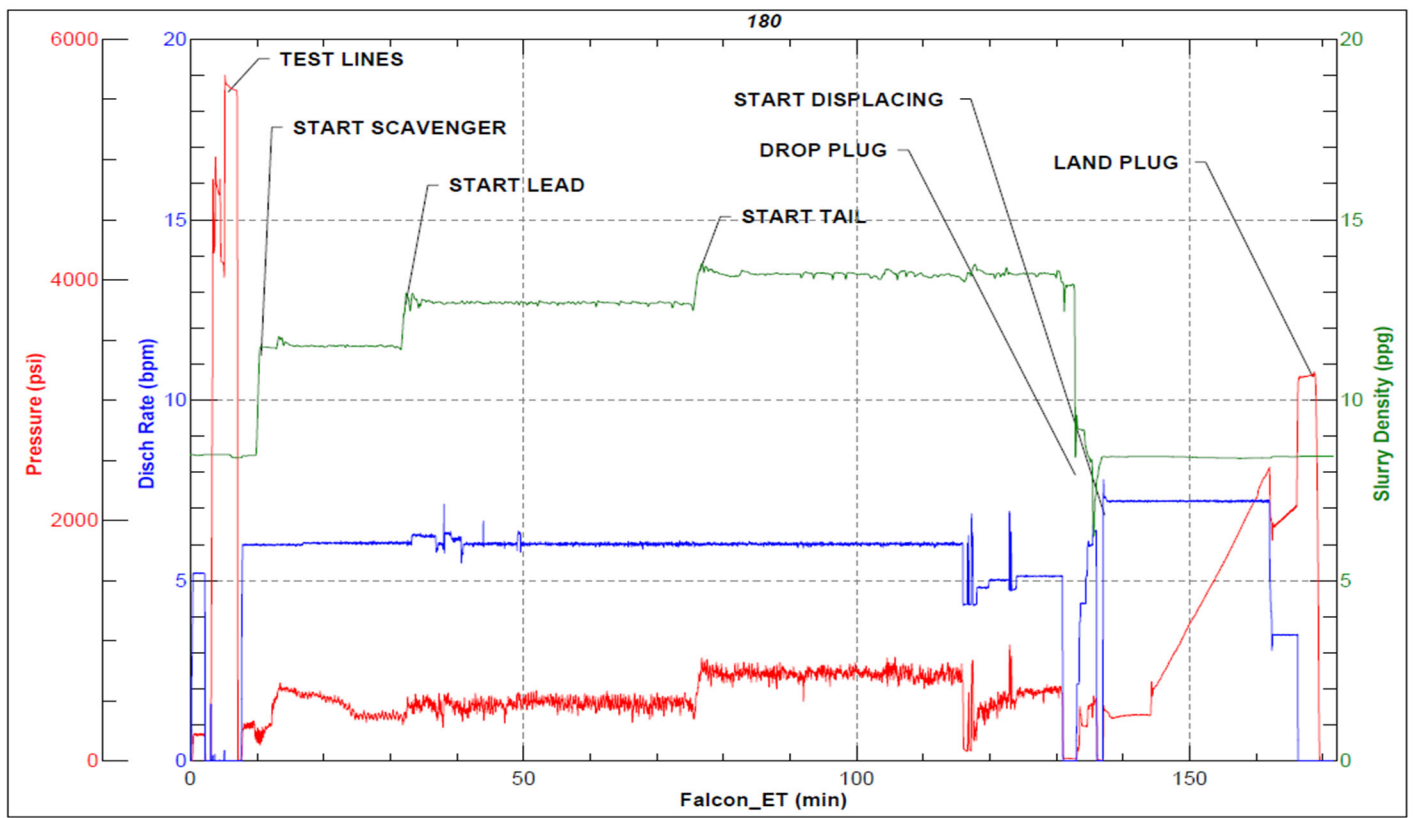
Line	Event	Date (MM/DD/YY)	Time (HH:MM)	Density (lb/gal)	Pump Rate (bpm)	Pump Volume (bbls)	Pipe Pressure (psi)	Comment
1	Callout	8/27/2022	06:00					CREW CALLED OUT FOR ON LOCATION TIME OF 14:30
2	Depart Location	8/27/2022	11:15					CREW DEPARTS RCO YARD FOR LOCATION
3	Arrive On Location	8/27/2022	12:05					FULL CREW ARRIVES ON LOCATION
4	Rig Up Iron	8/27/2022	12:08					RIG UP IRON AND HOSES
5	Safety Meeting	8/27/2022	16:10					JSA SAFETY MEETING WITH AC CREW, RIG HANDS, AND CUSTOMER REP
6	Fill Lines	8/27/2022	16:55	8.34	2	10	178	FILL LINES WITH 10 BBLS FRESH WATER
7	Pressure Test Lines	8/27/2022	17:00				5000	PRESSURE TEST LINES TO 5000 PSI
8	Pump Mudflush	8/27/2022	17:05	8.43	6	20	254	PUMP MUDFLUSH 20 BBLS
8	Pump Scavenger	8/27/2022	17:10	11.5	6	5	580	BEGIN PUMPING 11.5 PPG SCAVENGER SLURRY,
9	Pump Scavenger	8/27/2022	17:18	11.5	6	50	556	50 BBLS SCAVENGER PUMPED.
10	Pump Scavenger	8/27/2022	17:25	11.5	6	100	418	100 BBLS SCAVENGER PUMPED (Rig got returns @60 bbls of scav pumped 17:20)
11	Pump Scavenger	8/27/2022	17:27	11.5	6	115	439	115 BBLS SCAVENGER PUMPED
12	Pump Lead Cement	8/27/2022	17:29	12.7	6	5	466	BEGIN PUMPING 12.7 PPG LEAD CEMENT, DENSITY VERIFIED WITH MUD SCALE
13	Pump Lead Cement	8/27/2022	17:37	12.7	6	50	490	50 BBLS LEAD CEMENT PUMPED
14	Pump Lead Cement	8/27/2022	17:46	12.7	6	100	537	100 BBLS LEAD CEMENT PUMPED
15	Pump Lead Cement	8/27/2022	17:53	12.7	6	150	504	150 BBLS LEAD CEMENT PUMPED
16	Pump Lead Cement	8/27/2022	18:01	12.7	6	200	544	200 BBLS LEAD CEMENT PUMPED
17	Pump Lead Cement	8/27/2022	18:11	12.7	6	257	537	257 BBLS LEAD CEMENT PUMPED
18	Pump Tail Cement	8/27/2022	18:12	13.5		5	539	BEGIN PUMPING TAIL AT 13.5 PPG, DENSITY VERIFIED WITH MUD SCALE
19	Pump Tail Cement	8/27/2022	18:21	13.5	6	50	783	50 BBLS TAIL CEMENT PUMPED
20	Pump Tail Cement	8/27/2022	18:32	13.5	5	100	749	100 BBLS TAIL CEMENT PUMPED, RIG SHUTS DOWN FLOW TO PARASITE LINE, (Rig lost returns @ 140 bbls tail pumped 18:36)
21	Pump Tail Cement	8/27/2022	18:37	13.5	5	150	772	150 BBLS TAIL CEMENT PUMPED
22	Pump Tail Cement	8/27/2022	18:46	13.5	5	200	737	200 BBLS TAIL CEMENT PUMPED
23	Pump Tail Cement	8/27/2022	18:56	13.5	4.3	250	421	250 BBLS TAIL CEMENT PUMPED (Rig recovered 536 bbls mud)
24	Pump Tail Cement	8/27/2022	19:06	13.5	5	295	541	295 BBLS TAIL CEMENT PUMPED (no returns)
25	Clean Pumps and Lines	8/27/2022	19:07					SHUT DOWN, WASH PUMP AND LINES
26	Drop Top Plug	8/27/2022	19:14	7.2	6.5	10	395	DROP TOP PLUG, WITNESSED BY CUSTOMER REP. BEGIN DISPLACEMENT
27	Pump Displacement	8/27/2022	19:21	8.34	7.2	50	620	50 BBLS DISPLACEMENT PUMPED, (caught cement at 50 bbls pumped)

Line	Event	Date (MM/DD/YY)	Time (HH:MM)	Density (lb/gal)	Pump Rate (bpm)	Pump Volume (bbls)	Pipe Pressure (psi)	Comment
28	Pump Displacement	8/27/2022	19:28	8.34	7.2	100	1313	100 BBLS DISPLACEMENT PUMPED (no returns)
29	Pump Displacement	8/27/2022	19:35	8.34	7.2	150	2094	150 BBLS DISPLACEMENT PUMPED
30	Pump Displacement	8/27/2022	19:39	8.34	3.5	176	2285	176 BBLS DISPLACEMENT PUMPED (Slow to 3.5 bpm to land plug)
31	Pump Displacement	8/27/2022	19:41	8.34	3.5	180	2057	180 BBLS DISPLACEMENT PUMPED
32	Pump Displacement	8/27/2022	19:43	8.34	3.5	186	2170	186 BBLS DISPLACED FCP 2180
33	Land Plug	8/27/2022	19:44	8.34	3.5	186	3197	LAND PLUG FINAL BUMP PRESS 3197
34	Check Floats	8/27/2022	19:45					2.25 BBLS BACK FLOATS ARE HOLDING
35	Rig Down Iron	8/27/2022	19:46					RIG DOWN IRON AND HOSES
36	Depart Location	8/27/2022	21:45					LEAVE LOCATION

## Pump Diagrams



JobMaster Program Version 5.01C1  
Job Number: 83129  
Customer: CAERUS  
Well Name: BJU B26 #11D-26-496



Job Start: Saturday, August 27, 2022