

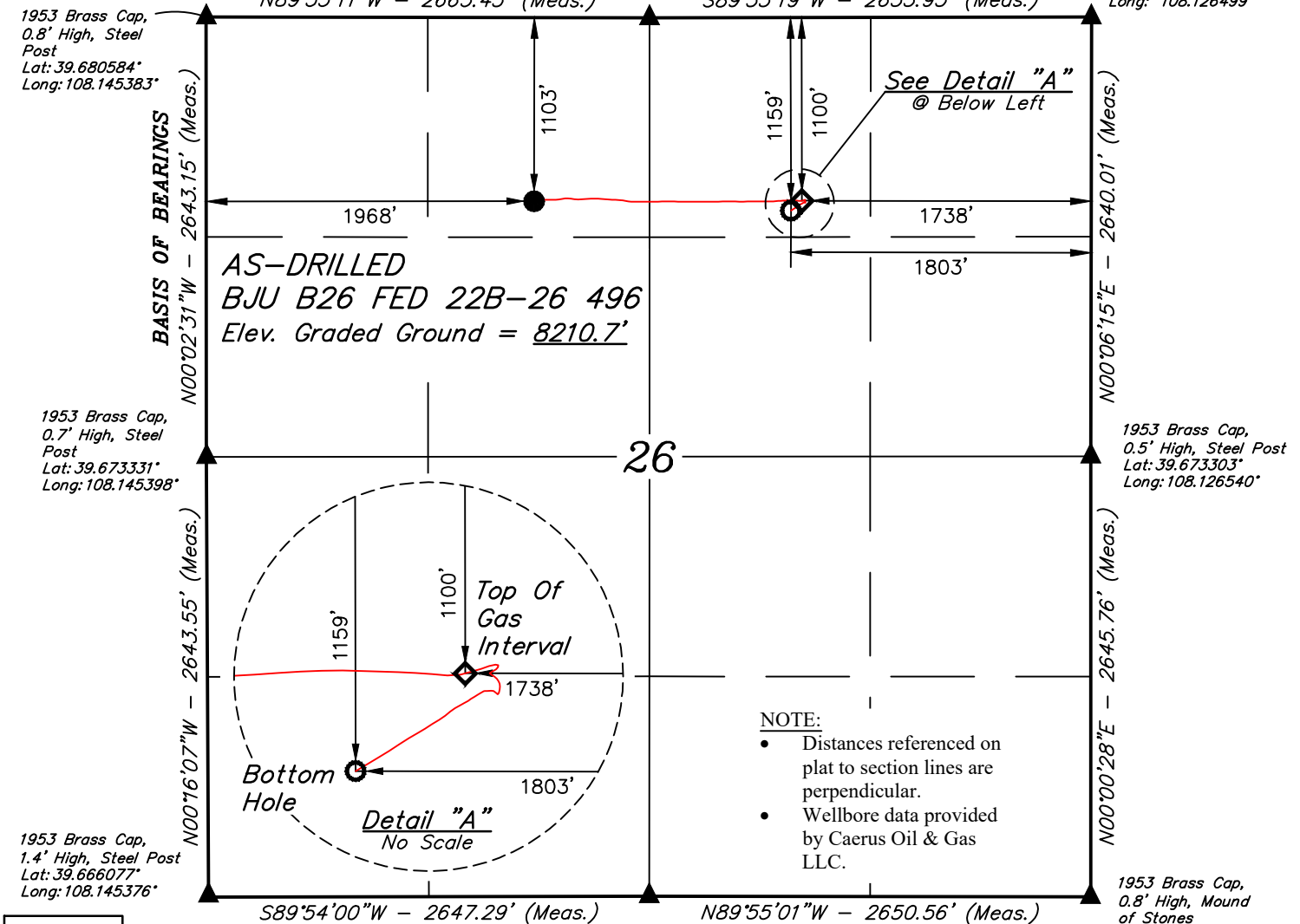
**LEGEND:**

- = AS-DRILLED WELLHEAD.  
 ◆ = TOP OF GAS INTERVAL.  
 ○ = BOTTOM HOLE.  
 ▲ = SECTION CORNERS LOCATED. (NAD 83)

**T4S, R96W, 6th P.M.**

1953 Brass Cap,  
 1.0' High, Mound  
 of Stones  
 Lat: 39.680552°  
 Long: 108.135924°

1953 Brass Cap,  
 0.5' High, Mound  
 of Stones, Steel Post  
 Lat: 39.680548°  
 Long: 108.126499°

**NOTE:**

- Distances referenced on plat to section lines are perpendicular.
- Wellbore data provided by Caerus Oil & Gas LLC.

**PDOP = 1.4**

<b>AD 83 (AS-DRILLED WELLHEAD)</b>	
LATITUDE = 39°40'39.12" (39.677533°)	
LONGITUDE = 108°08'18.23" (108.138399°)	
<b>NAD 27 (AS-DRILLED WELLHEAD)</b>	
LATITUDE = 39°40'39.21" (39.677558°)	
LONGITUDE = 108°08'15.95" (108.137763°)	
<b>UTM NAD 27 (ZONE 12)</b>	
N: 14421485.63' E: 2445829.95'	
<b>NAD 83 (TOP OF GAS INTERVAL)</b>	
LATITUDE = 39°40'39.11" (39.677531°)	
LONGITUDE = 108°07'57.67" (108.132687°)	
<b>NAD 27 (TOP OF GAS INTERVAL)</b>	
LATITUDE = 39°40'39.20" (39.677555°)	
LONGITUDE = 108°07'55.38" (108.132051°)	
<b>UTM NAD 27 (ZONE 12)</b>	
N: 14421536.13' E: 2447437.41'	
<b>NAD 83 (BOTTOM HOLE)</b>	
LATITUDE = 39°40'38.53" (39.677370°)	
LONGITUDE = 108°07'58.52" (108.132921°)	
<b>NAD 27 (BOTTOM HOLE)</b>	
LATITUDE = 39°40'38.62" (39.677395°)	
LONGITUDE = 108°07'56.23" (108.132285°)	
<b>UTM NAD 27 (ZONE 12)</b>	
N: 14421475.50' E: 2447373.39'	



1953 Brass Cap,  
 0.8' High, Mound  
 of Stones  
 Lat: 39.666072°  
 Long: 108.135977°

1953 Brass Cap,  
 0.8' High, Mound  
 of Stones  
 Lat: 39.666043°  
 Long: 108.126565°

**CERTIFICATE**

THIS IS TO CERTIFY THAT THE ABOVE PLAT WAS PREPARED AND LOCATION AS SHOWN WAS STAKED ON THE GROUND FROM FIELD NOTES OF ACTUAL SURVEYS MADE BY ME OR UNDER MY SUPERVISION AND THAT THE SAME ARE TRUE AND CORRECT TO THE BEST OF MY KNOWLEDGE AND BELIEF.

REGISTERED LAND SURVEYOR  
 REGISTRATION NO. 10180  
 STATE OF COLORADO

REV: 1 10-25-22 M.D. (UPDATE WELLBORE)

**BASIS OF BEARINGS**

BEARINGS ARE BASED ON THE ASSUMPTION THAT THE WEST LINE OF THE NORTHWEST 1/4 OF SECTION 26 BEARS N00°02'31"W. MONUMENTS DESCRIBED HEREON.

**BASIS OF ELEVATION**

BENCH MARK (H79) LOCATED IN THE NE 1/4 OF SECTION 35, T4S, R98W, 6th P.M., TAKEN FROM THE BULL FORK QUADRANGLE, COLORADO, 7.5 MINUTE SERIES. (TOPOGRAPHIC MAP) PUBLISHED BY THE UNITED STATES DEPARTMENT OF THE INTERIOR, GEOLOGICAL SURVEY. SAID ELEVATION IS MARKED AS BEING 8535 FEET.

**UELS, LLC**

Corporate Office \* 85 South 200 East  
 Vernal, UT 84078 \* (435) 789-1017



**Caerus Oil & Gas LLC**

**AS-DRILLED BJU B26 FED 22B-26 496**  
**NE 1/4 NW 1/4, SECTION 26, T4S, R96W, 6th P.M.**  
**GARFIELD COUNTY, COLORADO**

<b>SURVEYED BY</b>	DAYTON SLAUGH	11-05-21	<b>SCALE</b>
<b>DRAWN BY</b>	D.R.B.	11-09-21	1" = 1000'

**AS-DRILLED WELL LOCATION PLAT**