



Caerus Operating LLC

LONG STRING POST JOB REPORT

BJU B26 FED 22B-26-496 05-045-24458
S:26 T:4S R:96W Garfield CO

CallSheet #: 82730
Proposal #: 62018



LONG STRING Post Job Report

Attention: Mr. Cole Walton | (720) 880-6325 | cwalton@caerusoilandgas.com

Caerus Operating LLC

1001 17TH STREET | DENVER, CO 80202

Dear Mr. Cole Walton,

Thank you for the opportunity to provide cementing services on this well. American Cementing strives to achieve complete customer satisfaction. If you have any questions regarding the services or data provided, please contact American Cementing at any time.

Sincerely,

Krystal Schell

Field Engineer I | (719) 992-1830 | krystal.schell@americacementing.com

Field Office 28730 US-6, Rifle, CO 81650
Phone: (970) 657-1157

Job Details & Summary

Geometry

Type	Function	OD (in)	ID (in)	Weight (lb/ft)	Thread	Top (ft)	Bottom (ft)	Excess (%)
Casing	Outer	9.625	8.921	36	n/a	0	3015	0
Open Hole	Outer	n/a	8.75	n/a	n/a	3000	7095	25
Open Hole	Outer	n/a	8.75	n/a	n/a	7095	12304	0
Casing	Inner	4.5	4	11.6	n/a	0	12286.5	0

Equipment / People

Unit Type	Unit	Power Unit	Employee #1
AS Cement Trailer Float	CTF-048	TRC(TRB)-194	Bonin, Matthew
AS Cement Trailer Float	CTF-9309	TRC(TRB)-201	Carrasco, Joel
AS Cement Trailer Float	CTF-9299	TRC(TRB)-201	Carrasco, Joel
AS Cement Trailer Float	CTF-9898	TRC(TRB)-194	Bonin, Matthew
Cement Trailer Float	CTF-280	TRC(TRB)-090	Bradbrook, Jeremy
Field Storage Silo	FSS(CTS)-469		
Field Storage Silo	FSS(CTS)-468		
Cement Pump Float	CPF-136	TRH-855	Woronovitch, Collin
Light Duty Vehicles	LDV-063		Castillo, Francisco

Timing

Event	Date/Time
Call Out	8/3/2022 12:00
Depart Facility	8/3/2022 14:18
On Location	8/3/2022 15:30
Rig Up Iron	8/3/2022 15:50
Job Started	8/4/2022 00:40
Job Completed	8/4/2022 03:25
Rig Down Iron	8/4/2022 03:55
Depart Location	8/4/2022 05:00

General Job Information

Metrics	Value
Well Fluid Density	10.7 lb/gal
Well Fluid Type	WBM
Rig Circulation Vol	1440 bbls
Rig Circulation Time	2 hours
Calculated Displacement	189 bbls
Actual Displacement	189 bbls
Total Spacer to Surface	0 bbls
Total CMT to Surface	0 bbls
Well Topped Out	N/A

Job Details

Metrics	Value
Flare Prior to Job	No
Flare Prior to Job	0 units
Flare During Job	No
Flare During Job	0 units
Flare at End of Job	No
Flare at End of Job	0 units
Well Full Prior to Job	Yes
Well Fluid Density Into Well	10.7 lb/gal
Well Fluid Density Out of Well	10.7 lb/gal

Job Details (cont.)

Metrics	Value
BHCT	218 °F
BHST	287 °F

Water Analysis

Metrics	Value	Recommended
Water Source	Upright Rig Tank	
Temperature	77 °F	50-80 °F
pH Level	7	5.5-8.5
Chlorides	0 mg/L	0-3000 mg/L
Total Alkalinity	240	0-1000
Total Hardness	250 mg/L	0-500 mg/L
Carbonates	0 mg/L	0-100 mg/L
Sulfates	200 mg/L	0-1500 mg/L
Potassium	250 mg/L	0-3000 mg/L
Iron	0 mg/L	0-300 mg/L

Circulation

Lost Circulation Experienced	Losses into Spacer	Losses into Cement	Losses into Displacement
Yes	N/A	N/A	N/A

Circulation Details

GOT RETURNS 38 BBLS INTO SCAVENGER AND LOST RETURNS 150 BBLS INTO TAIL.

Job Execution Information

Fluid	Product	Function	Density (lb/gal)	Yield (ft ³ /sk)	Water Rq. (gal/sk)	Water Rq. (gal/bbl)	Volume (sk)	Volume (bbl)	Designed Top (ft)
1	Mud Flush	Flush	8.45			40.86		20.00	653
2	Scavenger	Scavenger	11.50	2.76	16.68		235.00	115.48	1000
3	Lead	Lead	12.70	2.00	11.00		770.00	274.56	3000
4	Tail	Tail	13.50	2.00	9.66		821.00	291.95	7012
5	Water + KCL Sub	DisplacementFinal	8.34			42.00		189.00	0

Job Fluid Details

Fluid	Type	Fluid	Product	Function	Conc.	Uom
1	Flush	Mud Flush	SAPP	Surfactant	10.00	lb/bbl
1	Flush	Mud Flush	SS-201	Surfactant	0.50	gal/bbl
2	Scavenger	Scavenger	ASTM TYPE I/II	Cement	100.00	%
2	Scavenger	Scavenger	BA-60	GasMigration	0.30	%BWOB
2	Scavenger	Scavenger	FP-24	Defoamer	0.30	%BWOB
2	Scavenger	Scavenger	GW-86	Viscosifier	0.20	%BWOB
2	Scavenger	Scavenger	IntegraSeal PHENO	LostCirculation	3.00	lb/sk
2	Scavenger	Scavenger	R-3	Retarder	0.50	%BWOB
2	Scavenger	Scavenger	STATIC FREE	Other	0.01	lb/sk
3	Lead	Lead	ASTM TYPE I/II	Cement	100.00	%
3	Lead	Lead	BA-60	GasMigration	0.30	%BWOB
3	Lead	Lead	FL-66	FluidLoss	0.50	%BWOB
3	Lead	Lead	FP-24	Defoamer	0.30	%BWOB
3	Lead	Lead	GW-86	Viscosifier	0.10	%BWOB
3	Lead	Lead	IntegraSeal PHENO	LostCirculation	3.00	lb/sk
3	Lead	Lead	R-3	Retarder	0.30	%BWOB
3	Lead	Lead	STATIC FREE	Other	0.01	lb/sk
4	Tail	Tail	CLASS G	Cement	70.00	%
4	Tail	Tail	FLY ASH (POZZOLAN)	Extender	30.00	%
4	Tail	Tail	BA-60	GasMigration	0.20	%BWOB

Fluid	Type	Fluid	Product	Function	Conc.	Uom
4	Tail	Tail	BENTONITE	Viscosifier	8.00	%BWOB
4	Tail	Tail	FL-24	FluidLoss	0.40	%BWOB
4	Tail	Tail	FP-24	Defoamer	0.30	%BWOB
4	Tail	Tail	IntegraSeal PHENO	LostCirculation	3.00	lb/sk
4	Tail	Tail	R-3	Retarder	0.25	%BWOB
4	Tail	Tail	S-8	StrengthRetrogression	25.00	%BWOB

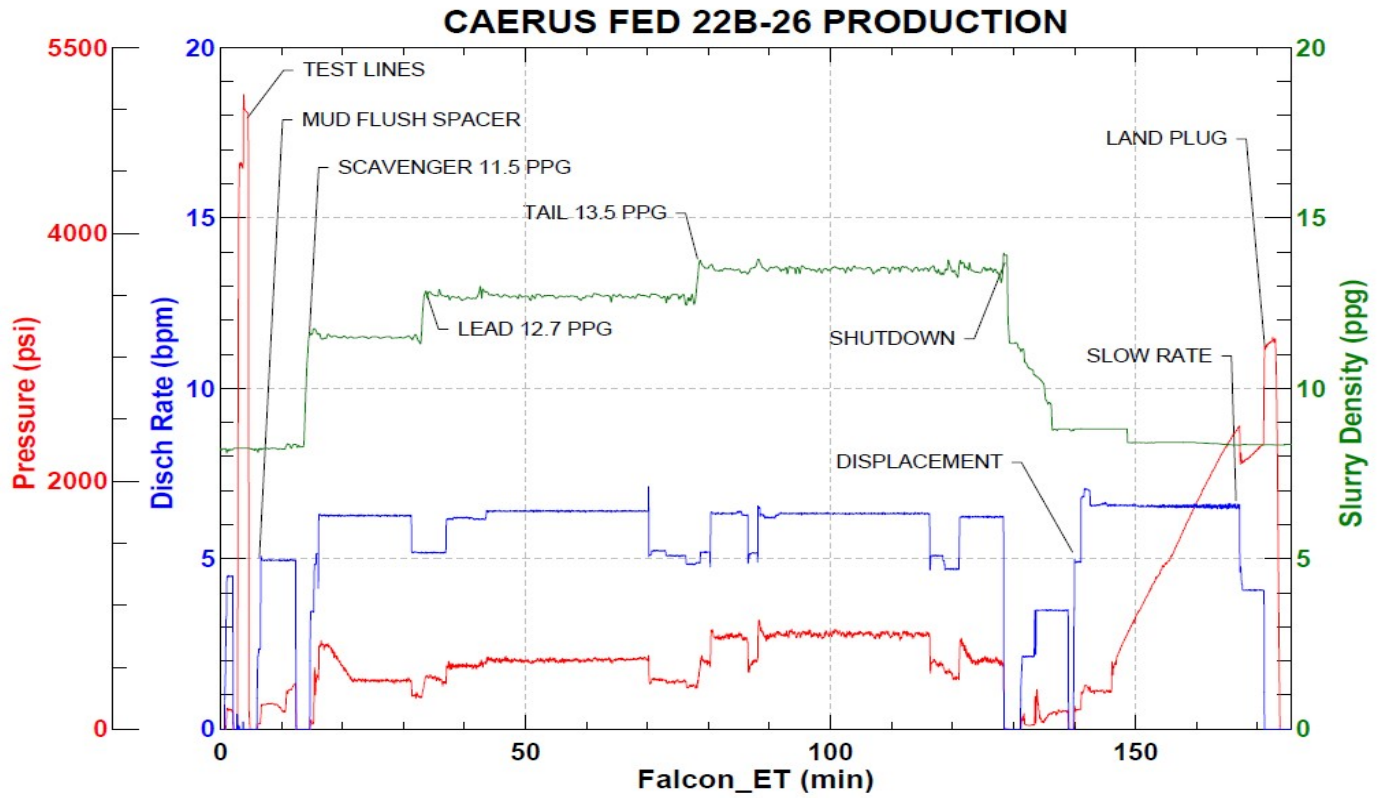
Job Logs

Line	Event	Date (MM/DD/YY)	Time (HH:MM)	Density (lb/gal)	Pump Rate (bpm)	Pump Volume (bbls)	Pipe Pressure (psi)	Comment
1	CALLOUT	8/3/2022	12:00					ON LOCATION AT 20:00 HRS
2	LEAVE YARD	8/3/2022	14:18					CREW LEAVE THE YARD
3	ON LOCATION	8/3/2022	15:30					CREW ON LOCATION
4	RIG UP	8/3/2022	15:50					RIG UP MEETING, RIG UP
5	SAFETY MEETING	8/4/2022	00:17					PRE-JOB SAFETY MEETING
6	PRESSURE TEST	8/4/2022	00:36				5100	PRESSURE TEST LINES
7	PUMP SPACER	8/4/2022	00:40	8.7	5	20	209	MUD FLUSH SPACER
8	SCAVENGER	8/4/2022	00:48	11.5	6	58	393	SCAV 235 SKS/116 BBLS AT 11.5 PPG, GOT RETURNS AT 38 BBLS
9	SCAVENGER	8/4/2022	00:57	11.5	6	58	411	116 BBLS SCAVENGER PUMPED
10	LEAD CEMENT	8/4/2022	01:07	12.7	6	50	517	LEAD 770 SKS/274 BBLS AT 12.7 PPG
11	LEAD CEMENT	8/4/2022	01:16	12.7	6	50	551	100 BBLS LEAD CEMENT PUMPED
12	LEAD CEMENT	8/4/2022	01:24	12.7	6	50	559	150 BBLS LEAD CEMENT PUMPED
13	LEAD CEMENT	8/4/2022	01:31	12.7	6	50	567	200 BBLS LEAD CEMENT PUMPED
14	LEAD CEMENT	8/4/2022	01:39	12.7	6	62	573	262 BBLS LEAD CEMENT PUMPED
15	TAIL CEMENT	8/4/2022	01:52	13.5	5	50	511	TAIL 821 SKS/292 BBLS AT 13.5 PPG
16	TAIL CEMENT	8/4/2022	02:01	13.5	6	50	783	100 BBLS TAIL CEMENT PUMPED, SHUT PARASITE AIR
17	TAIL CEMENT	8/4/2022	02:09	13.5	6	50	761	150 BBLS TAIL CEMENT PUMPED, LOST RETURNS AT 150 BBLS
18	TAIL CEMENT	8/4/2022	02:16	13.5	6	50	769	200 BBLS TAIL CEMENT PUMPED
19	TAIL CEMENT	8/4/2022	02:24	13.5	6	92	573	292 BBLS TAIL CEMENT PUMPED
20	SHUTDOWN	8/4/2022	02:43					WASH PUMP AND LINES, DROP PLUG
21	DISPLACEMENT	8/4/2022	02:54	8.34	6.5	50	573	DISPLACEMENT WATER + RESCARE
22	DISPLACEMENT	8/4/2022	03:02	8.34	6.5	50	1359	100 BBLS DISPLACEMENT
23	DISPLACEMENT	8/4/2022	03:10	8.34	6.5	79	2467	179 BBLS DISPLACEMENT
24	SLOW RATE	8/4/2022	03:21	8.34	4	10	2301	SLOW RATE
25	LAND PLUG	8/4/2022	03:25				3097	LAND PLUG
26	CHECK FLOATS	8/4/2022	03:28					FLOATS HELD, 2 BBLS FLOW BACK
27	RIG DOWN	8/4/2022	03:55					RIG DOWN MEETING, RIG DOWN
28	LEAVE LOCATION	8/4/2022	05:00					CREW LEAVE LOCATION
29	OTHER	8/4/2022	05:01					614 BBLS MUD RETURNS

Pump Diagrams



JobMaster Program Version 5.01C1
 Job Number: 82730
 Customer: CAERUS
 Well Name: BJU B26 FED 22B-26



Job Start: Thursday, August 04, 2022