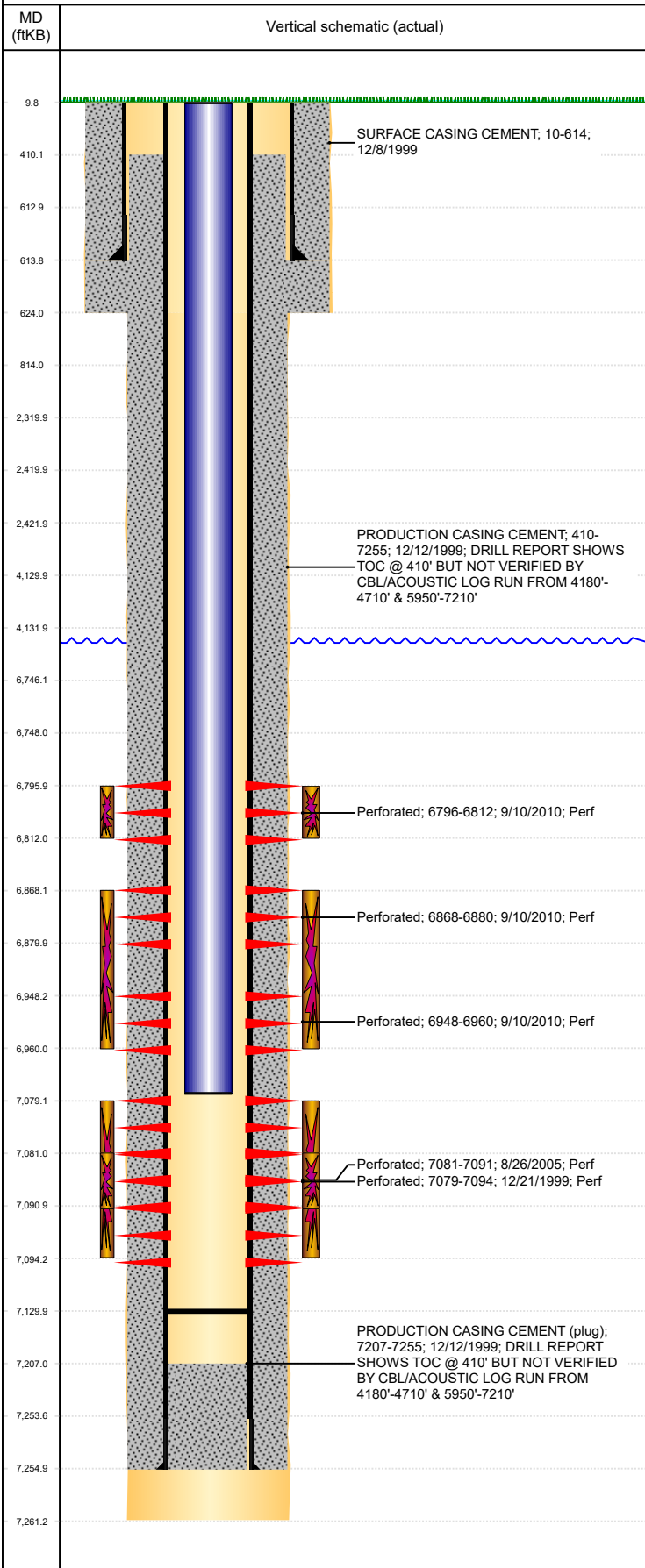




P&A Wellbore For State

Well Name: LOUSTALET 30-44

Land, Original Hole, 10/26/2022 2:03:58 PM



Well Header									
Surface UWI 0512319847		Business Unit Rockies		Gov Auth Dist		Prod Tree Loc Land			
Orig. KB to Gnd (ft) 10.00		Original Spud Date 12/6/1999		Abandon Date		Well Sub-Status PR		High...	
								N	
Comment									
Surface Location (Congressional)									
Qtr 3 SE	Qtr 4 SE	Section 30	Twonshp 4	Twonsh... N	Range 64	Rng E/... W	Latitude (°) 40.27798	Longitude (°) -104.58609	
Wellbore Sections									
Section Des		Hole Size (in)		Act Top (ftKB)		Act Btm (ftKB)			
SURFACE		12 1/4		10.0		624.0			
PRODUCTION		7 7/8		624.0		7,261.0			
Casing Strings									
Csg Des		Run Date	OD (in)	Wt/Len (lb/ft)	Grade	Top Depth (MD) (ftKB)	Set Depth (MD) (ftKB)		
Surface		12/8/1999	8 5/8	24.00	P-55	10	614		
Production Casing		12/12/1999	4 1/2	11.60		10	7255		
Cement									
Des		Start Date		Top (ftKB)		Btm (ftKB)			
SURFACE CASING CEMENT		12/8/1999		10.0		614.0			
PRODUCTION CASING CEMENT		12/12/1999		410.0		7,255.0			
Zone Statuses									
Zone Name	Status Date	Status	Fluid Type	Job			Prod Method		
CODELL	9/1/2005	PR		RE-FRAC, 8/23/2005 00:00					
CODELL	9/11/2010	PR		RECOMPLETION, 8/17/2010 14:00					
NIOBRARA	9/11/2010	PR		RECOMPLETION, 8/17/2010 14:00					
Perforation Data									
Linked Zone	Explosive Type	Entered Shot Total	Top (ftKB)	Btm (ftKB)	Date				
NIOBRARA, Original Hole	A	32	6,796.0	6,812.0	9/10/2010				
NIOBRARA, Original Hole	C	24	6,868.0	6,880.0	9/10/2010				
NIOBRARA, Original Hole	B	24	6,948.0	6,960.0	9/10/2010				
CODELL, Original Hole		60	7,079.0	7,094.0	12/21/1999				
CODELL, Original Hole		40	7,081.0	7,091.0	8/26/2005				
Stimulation Intervals									
Zone		Start Date		Top (ftKB)		Btm (ftKB)			
NIOBRARA, Original Hole		9/10/2010		6,796.0		6,812.0			
NIOBRARA, Original Hole		9/10/2010		6,868.0		6,960.0			
CODELL, Original Hole		12/23/1999		7,079.0		7,094.0			
CODELL, Original Hole		8/29/2005		7,081.0		7,091.0			
Other In Hole									
Run Date	Des		Make	OD (in)	Top (ftKB)	Btm (ftKB)			
Logs									
Date	Type			Depth Top (MD) (ftKB)	Btm (ftKB)				
12/11/1999	COMPENSATED DENSITY			4,300	7,271.0				
12/11/1999	INDUCTION			614	7,271.0				
12/20/1999	ACOUSTIC			4,180	7,207.0				
Plug Back Total Depths									
Date	Type	Com			PBTD (ftKB)				
8/18/2010	FILL	RUN BIT AND SCRAPER AND CLEAN OUT W/ 221 JTS.			7,151				
10/19/2010	PLUG REMNANTS	DRILLED OUT CFP & CHASE TO 7129.89' KB. COULDN'T MA...			7,130				