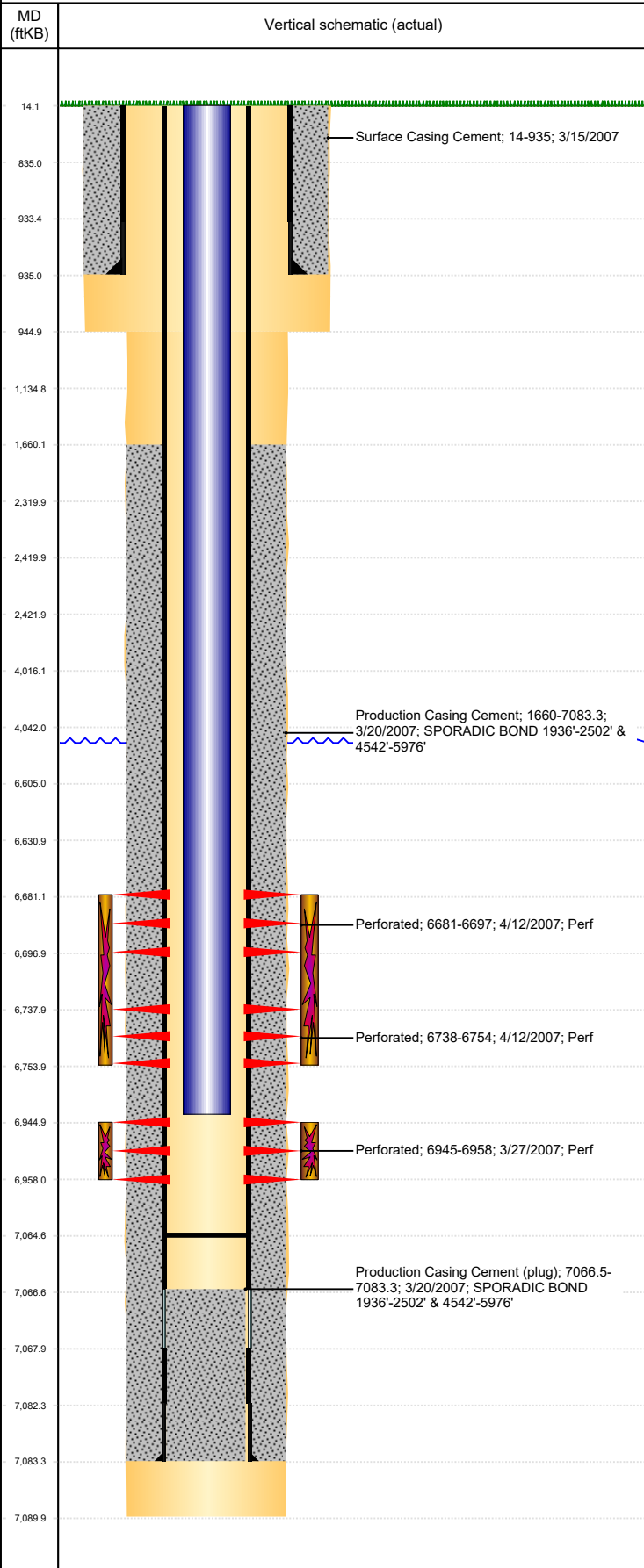




P&A Wellbore For State

Well Name: HANSCOME C28-19

Land, Original Hole, 10/26/2022 1:42:44 PM



Well Header									
Surface UWI 0512324624		Business Unit Rockies		Gov Auth Dist		Prod Tree Loc Land			
Orig. KB to Gnd (ft) 14.00		Original Spud Date 3/15/2007		Abandon Date		Well Sub-Status SI		High...	
Comment DISCREPANCY IN TD/PROD CSG DATE: ST RPT & DRL RPT 3/19/07, CSG TALLY 3/18/07, USED DRL RPT DATE									
WELLHEAD IS 3000#									
Surface Location (Congressional)									
Qtr 3 NW	Qtr 4 NW	Section 28	Twshp 4	Twshp...	Range 64	Rng E./... W	Latitude (°) 40.28728720	Longitude (°) -104.560834877	
Wellbore Sections									
Section Des		Hole Size (in)		Act Top (ftKB)		Act Btm (ftKB)			
SURFACE		12 1/4		14.0		945.0			
PRODUCTION		7 7/8		945.0		7,090.0			
Casing Strings									
Csg Des		Run Date	OD (in)	Wt/Len (lb/ft)	Grade	Top Depth (MD) (ftKB)	Set Depth (MD) (ftKB)		
Surface		3/15/2007	8 5/8	24.00	J-55	14	935		
Production Casing		3/19/2007	4 1/2	11.60	M-80	14	7083.3		
Cement									
Des		Start Date		Top (ftKB)		Btm (ftKB)			
Surface Casing Cement		3/15/2007		14.0		935.0			
Production Casing Cement		3/20/2007		1,660.0		7,083.3			
Zone Statuses									
Zone Name	Status Date	Status	Fluid Type	Job			Prod Method		
NIORBARA	4/16/2007	PR		DRILLING/COMPLETION - ORIGINAL, 3/15/2007...					
CODELL	4/16/2007	PR		DRILLING/COMPLETION - ORIGINAL, 3/15/2007...					
Perforation Data									
Linked Zone	Explosive Type	Entered Shot Total	Top (ftKB)	Btm (ftKB)	Date				
NIORBARA, Original Hole		64	6,681.0	6,697.0	4/12/2007				
NIORBARA, Original Hole		64	6,738.0	6,754.0	4/12/2007				
CODELL, Original Hole		52	6,945.0	6,958.0	3/27/2007				
Stimulation Intervals									
Zone		Start Date		Top (ftKB)		Btm (ftKB)			
NIORBARA, Original Hole		4/12/2007		6,681.0		6,754.0			
CODELL, Original Hole		4/12/2007		6,945.0		6,958.0			
Other In Hole									
Run Date	Des		Make	OD (in)	Top (ftKB)	Btm (ftKB)			
Logs									
Date	Type			Depth Top (MD) (ftKB)	Btm (ftKB)				
3/19/2007	COMPENSATED DENSITY			935	7,064.0				
3/19/2007	INDUCTION			935	7,084.0				
3/27/2007	CBL/CCL/GR			1,522	7,042.0				
10/11/2018	GYRO			14	6,850.0				
Plug Back Total Depths									
Date	Type	Com			PBTD (ftKB)				
3/27/2007	FILL	DEPTH LOGGER ON CBL			7,044				
5/9/2007	PLUG REMNANTS	DRILL CIPF AND CHASE TO 7065'			7,065				

Production Casing Cement (plug): 7066.5-7083.3; 3/20/2007; SPORADIC BOND 1936'-2502' & 4542'-5976'

Production Casing Cement; 1660-7083.3; 3/20/2007; SPORADIC BOND 1936'-2502' & 4542'-5976'

Perforated; 6681-6697; 4/12/2007; Perf

Perforated; 6738-6754; 4/12/2007; Perf

Perforated; 6945-6958; 3/27/2007; Perf