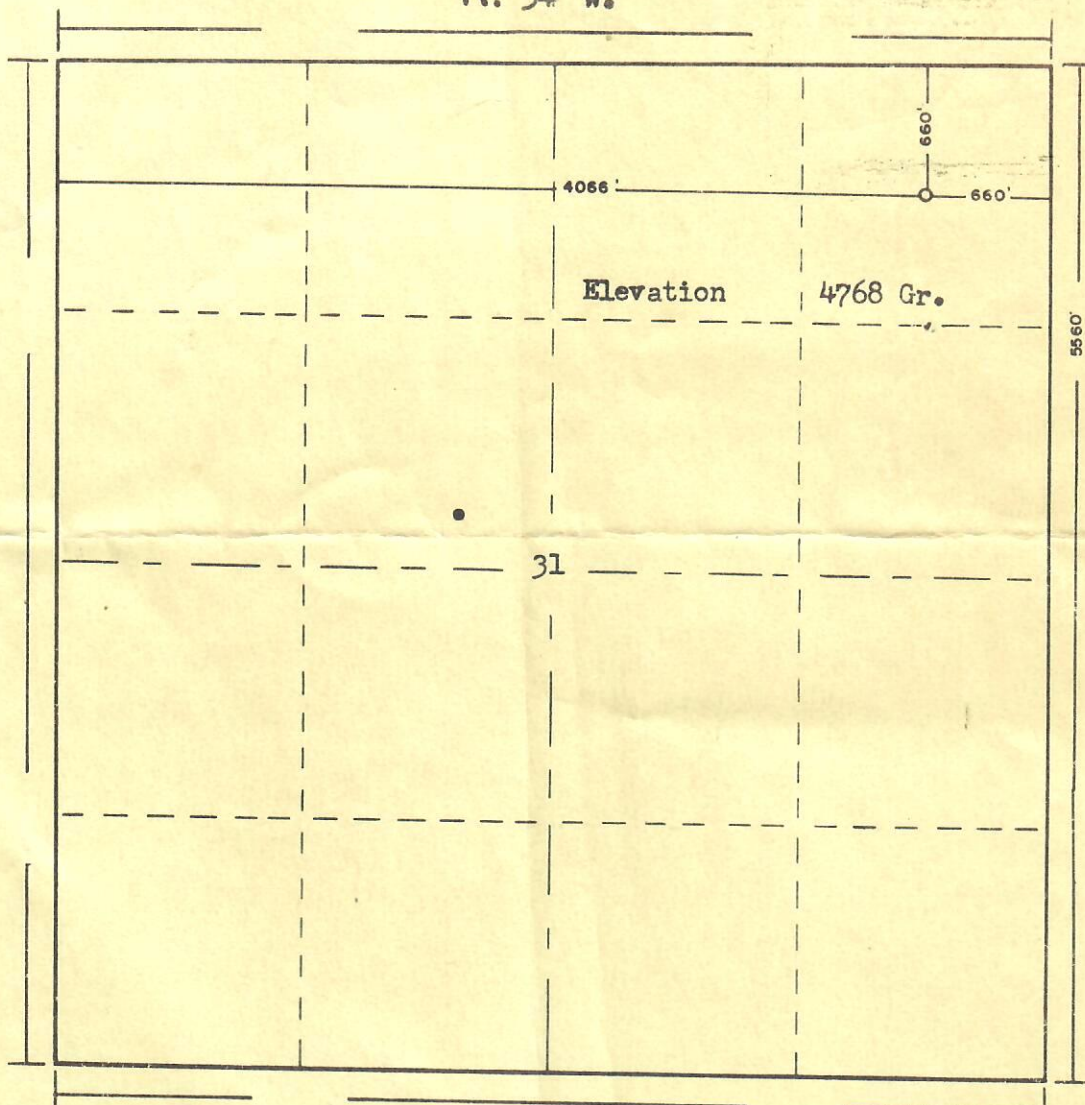




R. 54 W.



T.  
12  
N.

Scale ... 1" = 1000'



Powers Elevation Company of Casper, Wyoming  
has in accordance with a request from Mr. Jack Brunel  
for Anderson & Prichard & Sanford & Rounds determined the  
Location of #1 UPRR-Clearman  
to be C NE NE Section 31 Township 12 North  
Range 54 West 6th Principal Meridian  
3960'W of #2 Hitchcock  
Logan County, Colorado

The above Plat shows the location of the well site  
in said section.

Powers Elevation Company

by: *Burr Leibert*

Burr Leibert  
Registered Land Surveyor

Date: 12-31-55

