

Cement Verification Report - Cementer's Well Service, Inc.



P.O. BOX 336220 • GREELEY, CO 80633 • (970) 353-7299 • FAX (970) 353-7712

COGCC Operator Guidance **RULE #308.A.B(2)A.ii**

CLIENT: PDC Energy	Cementer's FIELD TICKET #	300356-D
--------------------	------------------------------	----------

Requested Operator Guidance:

Well Name & Number	Lease	Stugart	Well No.	02C
Well API Number	05-123-51273			
Job Date	7/26/22	Time on	8:30	24 hr time
Job Type	New Well Surface			
Cementing Company	Cementer's Well Service, Inc	Contact	Nate Kvamme - 303-324-4296	
Ambient conditions	clear	82	temp deg F	
Slurry Description				
a) Purpose	Surface - 9 5/8" 36# CSG, 13 1/2" hole			
b) Cement Class	ASTM C150 Type II			
c) Cement Yield	1.61	cuft / sk		
d) Cement Density	13.9	PPG		
e) Number of sks	765	sks (94# equiv)		
f) Mix Fluid Type				
Water / Cement	8.5	Gal / sk		
g) Slurry mixed	219.3	BBLs slurry		
h) Additives used	1.5%	CaCl2	3.0%	Bentonite
Total Water Used	311.2	BBLs H2O		
i) Displacement Fluid Vol	126.4	BBLs H2O		
j) Method of Placement				
k) Set Depth	1,676	feet (ft)		
l) Stage tool depth	n/a			
m) Float Collar Depth	1,635	feet (ft)		
n) Designed Top of Cement	n/a	to surface		
o) Centralizer depths	0	feet (ft)		

Charts - (pressure, density, pump rate)

Landed Plug @ 1666 psi Final Lift Pressure @ 280 psi

Cement Density (as weighed during job) @ 13.9 PPG

Job notes

a) Plug down	<input checked="" type="radio"/> Y	N	Time	12:12	24 hr time
b) Floats held	<input checked="" type="radio"/> Y	N		7/26/22	
c) Full Returns	<input checked="" type="radio"/> Y	N	Lost Circulation	<input checked="" type="radio"/> Y	<input type="radio"/> N
d) Cement to surface	<input checked="" type="radio"/> Y	N	35.0	BBLs to surface	
e) If no returns, top off	n/a	BBLs			
f) Top off detail					
g) Additional Detail					

Cementer's Well Service, Inc.

P.O. BOX 336220 • GREELEY, CO 80633 • (970) 353-7299 • FAX (970) 353-7712



PDC Energy

Surface Cement Job Graph & Casing Pressure Test

COMPANY DETAILS

Date	7/26/22	API #	05-123-51273	Well No.	02C
County	Weld	State	CO	Lease	Stugart

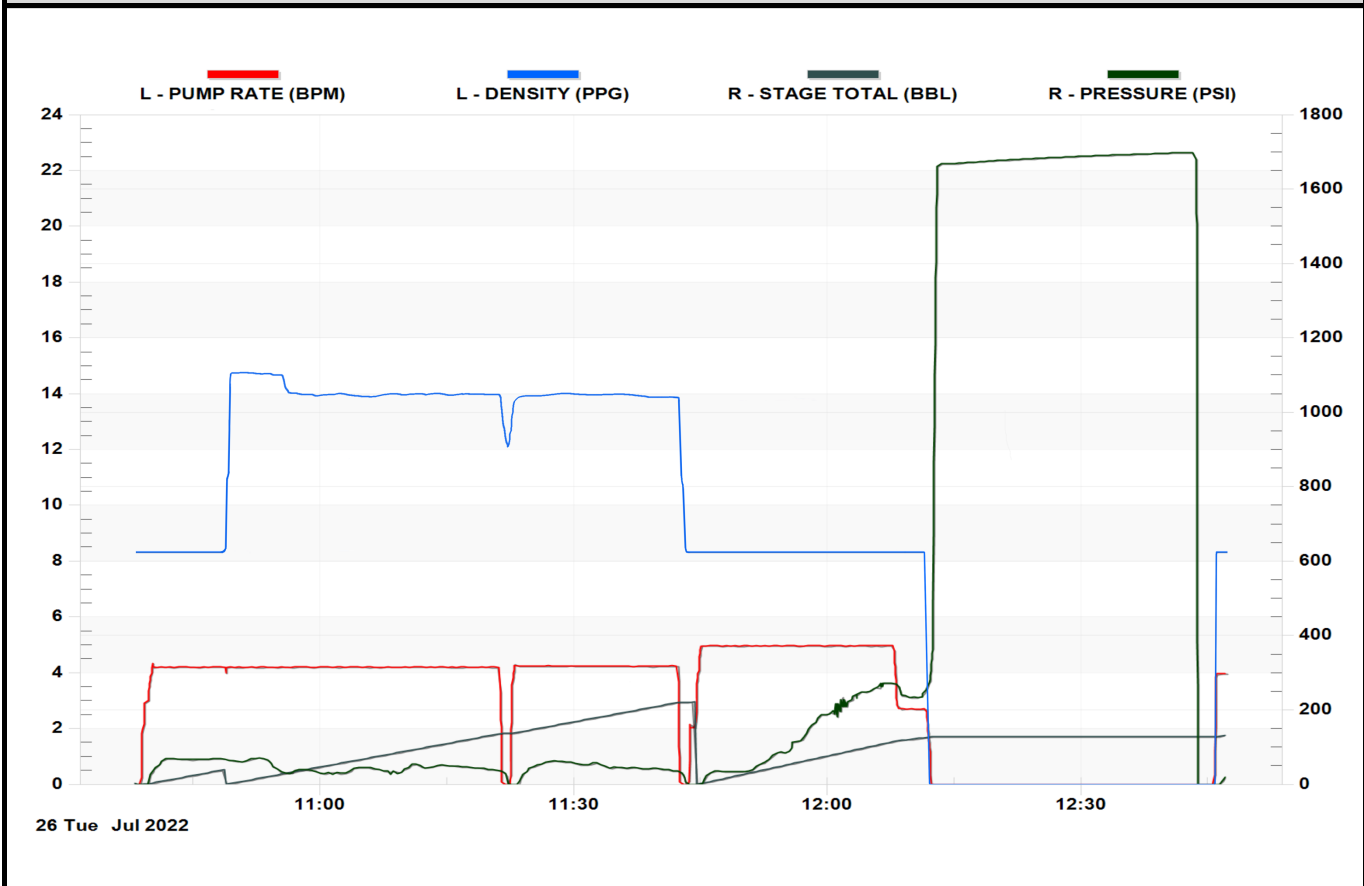
Client PDC Energy

Contact / email

JOB DETAILS

TIME ON	8:30	24 hr	Depth	1,686	ft.	Pressure Test @	1,666	psi
START TIME	10:38	7/26/22	Bottom of Surface	1,676	ft.	10 min	1,679	psi
END TIME	12:47	7/26/22	Plug Landed @	1,635	ft.	20 min	1,691	psi
			Plug Landed @	12:12	24 hr	30 min	1,699	psi

SUMMARY GRAPH





Centralizer Depths

Well Name: STUGART STATE 02C

Surface, Set Depth: 1,676.4ftKB

API 05123512730000		Surface Legal Location SENW 20-5N-66W		Field Name Wattenberg		State CO		Well Configuration Type Horizontal	
Ground Elevation (ft) 4,885.00	Original KB Elevation (ft) 4,898.00	KB-Ground Distance (ft) 13.00	Spud Date	Rig Release Date	On Production Date	Abandon Date			

Casing Run Tally

Run #	Ref #	Item Des	OD (in)	Wt (lb/ft)	Grade	Run?	Len (ft)	Centralized?	Ext Jw/ry	Connections	Top (ftKB)	Cum Len (ft)
1		Casing joints	9 5/8	36.00	J-55	Yes	41.39	Yes		LT&C	1,633.2	41.39
2		Casing joints	9 5/8	36.00	J-55	Yes	41.38	Yes		LT&C	1,591.8	82.77
3		Casing joints	9 5/8	36.00	J-55	Yes	41.42	Yes		LT&C	1,550.4	124.19
7		Casing joints	9 5/8	36.00	J-55	Yes	41.42	Yes		LT&C	1,384.8	289.77
11		Casing joints	9 5/8	36.00	J-55	Yes	41.38	Yes		LT&C	1,219.3	455.27
15		Casing joints	9 5/8	36.00	J-55	Yes	41.39	Yes		LT&C	1,053.8	620.78
19		Casing joints	9 5/8	36.00	J-55	Yes	41.38	Yes		LT&C	888.4	786.16
23		Casing joints	9 5/8	36.00	J-55	Yes	41.36	Yes		LT&C	722.9	951.69
27		Casing joints	9 5/8	36.00	J-55	Yes	40.16	Yes		LT&C	558.6	1,115.97
31		Casing joints	9 5/8	36.00	J-55	Yes	41.38	Yes		LT&C	393.1	1,281.50
35		Casing joints	9 5/8	36.00	J-55	Yes	41.37	Yes		LT&C	227.5	1,447.06
39		Casing joints	9 5/8	36.00	J-55	Yes	41.39	Yes		LT&C	62.0	1,612.60