

Interim Reclamation and Stormwater Inspection

October 19, 2022

Operator: VERDAD RESOURCES LLC #10651

Location ID: 425541

Inspection Document #: 697504301

Weld County, CO

SWSE Section 26 T8N R60W

Chris Binschus
Reclamation Specialist, COGCC



COLORADO
**Oil & Gas Conservation
Commission**

Department of Natural Resources

Inspection Photos
Location Name: HEMBERGER/26-34-8-60
Location ID: 425541



Photo 1. Photo taken from the northern interim reclamation area, facing Southwest. Photo illustrates the establishment of annual, weedy Kochia with mostly introduced grass species with some natives.



Photo 2. Photo taken from the northern interim reclamation area, facing Southwest. Photo illustrates unmanaged Kochia.

Inspection Photos
Location Name: HEMBERGER/26-34-8-60
Location ID: 425541



Photo 3. Photo taken from the southwestern interim reclamation area, facing Northeast. See comments under Photo 1.



Photo 4. Photo taken from the south/southeastern interim reclamation area, facing South. Photo illustrates the establishment of mostly introduced grass species with some natives.

Inspection Photos
Location Name: HEMBERGER/26-34-8-60
Location ID: 425541



Photo 5. Photo taken from the south/southeastern interim reclamation area, facing Northeast. See comments under Photo 4.



Photo 6. Photo taken from the south/southeastern interim reclamation area, facing Southwest. Photo illustrates an area of annual, weedy Kochia establishment.

Inspection Photos
Location Name: HEMBERGER/26-34-8-60
Location ID: 425541



Photo 7. Photo taken from the southeastern interim reclamation area, facing Northeast. Photo illustrates bare ground with some Kochia.

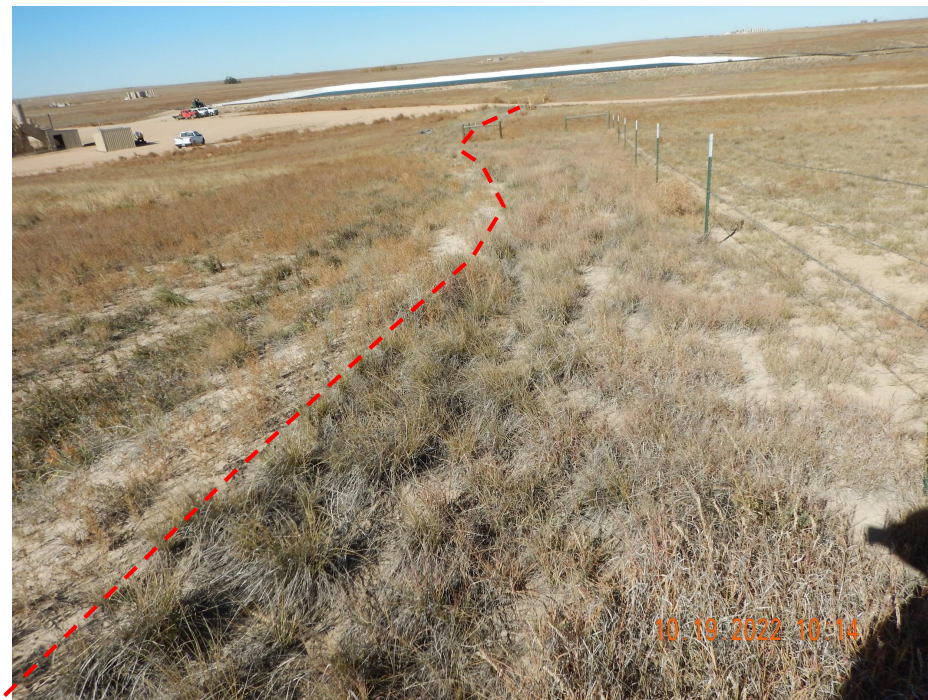


Photo 8. Reference photo taken from the southeastern interim reclamation area, facing Northwest. Photo illustrates native grass species and no introduced grass species were observed.

Interim reclamation areas are to the left of the red-dashed line and reference areas to the right.

Inspection Photos
Location Name: HEMBERGER/26-34-8-60
Location ID: 425541



Photo 9. Photo taken from the eastern interim reclamation area, facing West. Photo illustrates trash/debris from the pit liner.



Photo 10. Photo taken from the eastern interim reclamation area, facing South. See comments under Photo 2.

Inspection Photos
Location Name: HEMBERGER/26-34-8-60
Location ID: 425541



Photo 11. Photo taken from the southern pit, facing Southeast. Photo illustrates the establishment of mostly introduced grass species with some natives and bare ground.



Photo 12. Photo taken from the southern pit, facing Northeast. See comments under Photo 11.

Inspection Photos
Location Name: HEMBERGER/26-34-8-60
Location ID: 425541



Photo 13. Photo taken from the pit topsoil stockpile, facing Southeast. Photo illustrates the establishment of mostly introduced grass species and Kochia.

