

Interim Reclamation and Stormwater Inspection

October 19, 2022

Operator: VERDAD RESOURCES LLC #10651

Location ID: 436809

Inspection Document #: 697504299

Weld County, CO

SESE Section 26 T8N R60W

Chris Binschus
Reclamation Specialist, COGCC



COLORADO
**Oil & Gas Conservation
Commission**

Department of Natural Resources

Inspection Photos
Location Name: Hemberger/4-26-8-60 PAD
Location ID: 436809



Photo 1. Photo taken from the southwestern interim reclamation area, facing Southeast. Photo illustrates the establishment of mixed native and introduced grass mix. Introduced grass species are establishing more than natives.



Photo 2. Photo taken from the southwestern interim reclamation area, facing Southeast. Photo illustrates an area of annual, weedy Kochia establishment.

Photo 2 taken from the red arrow.

Inspection Photos
Location Name: Hemberger/4-26-8-60 PAD
Location ID: 436809



Photo 3. Photo taken from the southwestern interim reclamation area, facing Northeast. Photo illustrates a mix of introduced/native grasses with Kochia.



Photo 4. Photo taken from the southwestern interim reclamation area, facing Northwest. See comments under Photo 3.

The red polygon illustrates an area of Kochia establishment.

Inspection Photos
Location Name: Hemberger/4-26-8-60 PAD
Location ID: 436809



Photo 5. Photo taken from the southern interim reclamation area, facing Northeast. See comments under Photo 2.



Photo 6. Photo taken from the southeastern interim reclamation area, facing Northeast. See comments under Photo 2.

Inspection Photos
Location Name: Hemberger/4-26-8-60 PAD
Location ID: 436809



Photo 7. Photo taken from the southeastern interim reclamation area, facing Northwest. Photo illustrates a topsoil stockpile with annual, weedy Kochia establishment.



Photo 8. Photo taken from the well pad area. Photo illustrates unmanaged Puncturevine, a List C Colorado noxious weed.

Inspection Photos
Location Name: Hemberger/4-26-8-60 PAD
Location ID: 436809

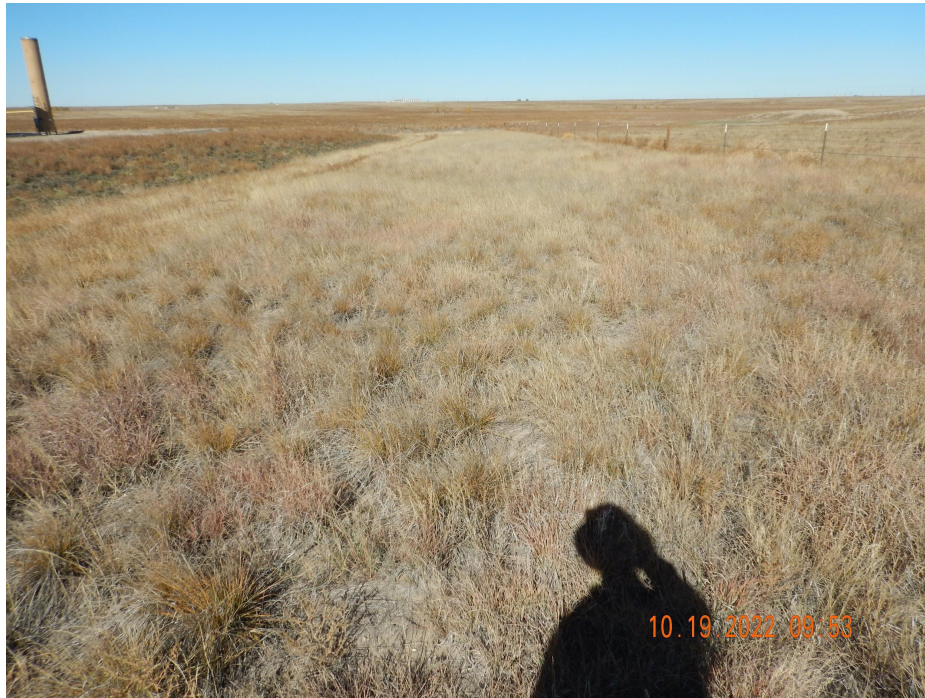


Photo 9. Reference photo taken from the northeastern interim reclamation area, facing Northwest. Photo illustrates native grass species and no introduced grass species were observed.



Photo 10. Reference photo taken from the northeastern interim reclamation area, facing Southeast. See comments under Photo 9.