

Interim Reclamation and Stormwater Inspection

October 19, 2022

Operator: VERDAD RESOURCES LLC #10651

Location ID: 437190

Inspection Document #: 697504297

Weld County, CO

SWSW Section 25 T8N R60W

Chris Binschus
Reclamation Specialist, COGCC



COLORADO
Oil & Gas Conservation
Commission

Department of Natural Resources

Inspection Photos
Location Name: HEMBERGER/1-25-8-60
PAD
Location ID: 437190



Photo 1. Photo taken from the southeastern interim reclamation area, facing South. Photo illustrates unmanaged annual, weedy Kochia vegetation and bare ground with some desirable vegetation establishment. Note- introduced grass species were observed which is not reflective of reference area vegetation.



Photo 2. Photo taken from the southeastern interim reclamation area, facing North. See comments under Photo 1.

Note- it is unclear whether there is topsoil stockpile along the eastern location or whether the location has been properly contoured.

Inspection Photos
Location Name: HEMBERGER/1-25-8-60
PAD
Location ID: 437190



Photo 3. Close up photo taken from within the interim reclamation area. Photo illustrates Crested wheatgrass, introduced grass species, that was seeded as part of interim reclamation.



Photo 4. Close up photo taken from within the interim reclamation area. Photo illustrates Smooth brome, introduced grass species, that was seeded as part of interim reclamation.

Inspection Photos
Location Name: HEMBERGER/1-25-8-60
PAD
Location ID: 437190



Photo 5. Photo taken from the eastern interim reclamation area, facing North. Photo illustrates Smooth brome establishment within the red polygon. Photo also illustrates unmanaged Kochia to the interior.



Photo 6. Photo taken from the eastern interim reclamation area, facing North. Photo illustrates a mix of introduced grass species and Kochia as the main vegetation with some establishment of natives.

Inspection Photos
Location Name: HEMBERGER/1-25-8-60
PAD
Location ID: 437190



Photo 7. Photo taken from the northeastern interim reclamation area, facing Northeast. Photo illustrates similar vegetative condition to Photo 6, except with a higher density of Kochia.



Photo 8. Photo taken from the northeastern interim reclamation area, facing West. See comments under Photo 6.

Inspection Photos
Location Name: HEMBERGER/1-25-8-60
PAD
Location ID: 437190



Photo 9. Photo taken from the southwestern interim reclamation area, facing Southwest. Photo illustrates unmanaged Kochia along the southern fill slope.



Photo 10. Photo taken from the southwestern interim reclamation area, facing North. Photo illustrates unmanaged Kochia along the base of the western fill slope.

Inspection Photos
Location Name: HEMBERGER/1-25-8-60
PAD
Location ID: 437190



Photo 11. Photo taken from the northeastern interim reclamation area, facing North. Photo illustrates unmanaged Puncturevine, a List C Colorado noxious weed. Also, the photo illustrates areas not needed for production operations along the northeastern location can be further reduced. Refer to Photo 13 for more information.

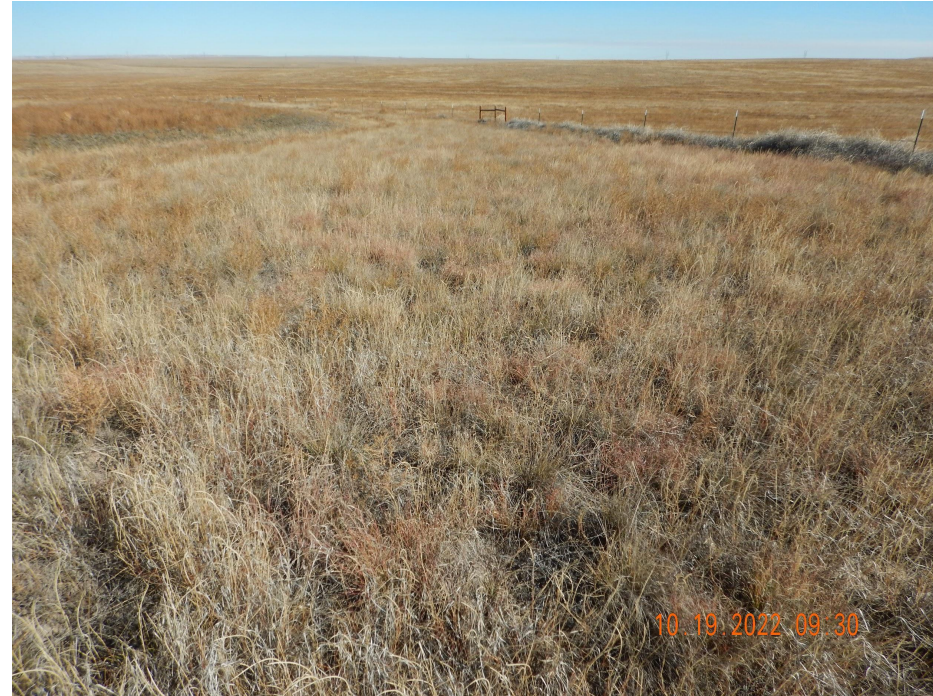


Photo 12. Reference photo taken from the eastern location, facing North. Photo illustrates native grass species and no introduced grass species were observed.

Inspection Photos
Location Name: HEMBERGER/1-25-8-60 PAD
Location ID: 437190



Photo 13. COGCC GISOnline aerial imagery from 2019 illustrates two red lines: shorter= ~140' and longer= ~200'. Operator does not appear to need portions of this northeastern area and shall further reduce the location per Rule 1003.

