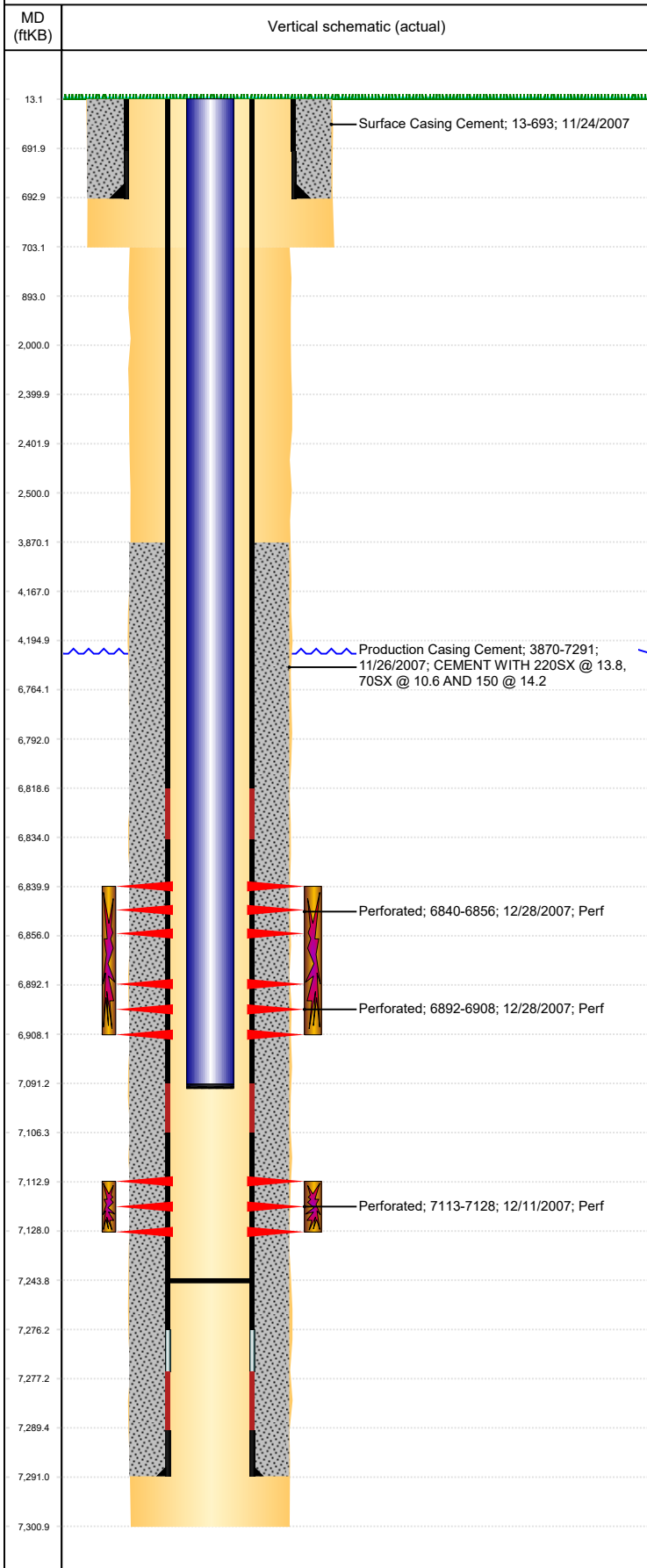




# P&A Wellbore For State

Well Name: SHELTON H01-23

Land, Original Hole, 10/25/2022 3:41:07 PM



Well Header										
Surface UWI 0512326528			Business Unit Rockies			Gov Auth Dist		Prod Tree Loc Land		
Orig. KB to Gnd (ft) 13.00		Original Spud Date 11/23/2007		Abandon Date		Well Sub-Status PR			High... N	
Comment STATE SHOWS SHUT IN OCT 2016.										
Surface Location (Congressional)										
Qtr 3 SE	Qtr 4 SE	Section 1	Twtnshp 3	Twtnsh... N	Range 65	Rng E/... W	Latitude (°) 40.25049597	Longitude (°) -104.607080733		
Wellbore Sections										
Section Des			Hole Size (in)			Act Top (ftKB)		Act Btm (ftKB)		
Surface			12 1/4			13.0		703.0		
Production			7 7/8			703.0		7,301.0		
Casing Strings										
Csg Des			Run Date		OD (in)	Wt/Len (lb/ft)	Grade	Top Depth (MD) (ftKB)	Set Depth (MD) (ftKB)	
Surface			11/24/2007		8 5/8	24.00	J-55	13	693	
Production Casing			11/26/2007		4 1/2	11.60	M-80	13.2	7291	
Cement										
Des					Start Date		Top (ftKB)		Btm (ftKB)	
Surface Casing Cement					11/24/2007		13.0		693.0	
Production Casing Cement					11/26/2007		3,870.0		7,291.0	
Zone Statuses										
Zone Name		Status Date	Status	Fluid Type	Job				Prod Method	
CODELL		12/29/2007	PR	Water	DRILLING/COMPLETION - ORIGINAL, 11/23/200...				Flowing	
NIORBARA		12/29/2007	PR		DRILLING/COMPLETION - ORIGINAL, 11/23/200...					
Perforation Data										
Linked Zone			Explosive Type	Entered Shot Total	Top (ftKB)		Btm (ftKB)		Date	
NIORBARA, Original Hole				32	6,840.0		6,856.0		12/28/2007	
NIORBARA, Original Hole				32	6,892.0		6,908.0		12/28/2007	
CODELL, Original Hole				60	7,113.0		7,128.0		12/11/2007	
Stimulation Intervals										
Zone				Start Date		Top (ftKB)		Btm (ftKB)		
NIORBARA, Original Hole				12/28/2007		6,840.0		6,908.0		
CODELL, Original Hole				12/28/2007		7,113.0		7,128.0		
Other In Hole										
Run Date		Des			Make		OD (in)	Top (ftKB)	Btm (ftKB)	
Logs										
Date		Type					Depth Top (MD) (ftKB)		Btm (ftKB)	
11/26/2007		COMPENSATED DENSITY					2,870		7,279.0	
11/26/2007		INDUCTION					698		7,299.0	
12/5/2007		Cement Bond					3,780		7,244.0	
10/28/2013		GYRO					13		7,000.0	
Plug Back Total Depths										
Date		Type		Com					PBTD (ftKB)	
12/6/2008		PLUG REMNANTS		TAG W/ 14' IN ON 6TH JT					7,247	
10/16/2014		FILL							7,244	