



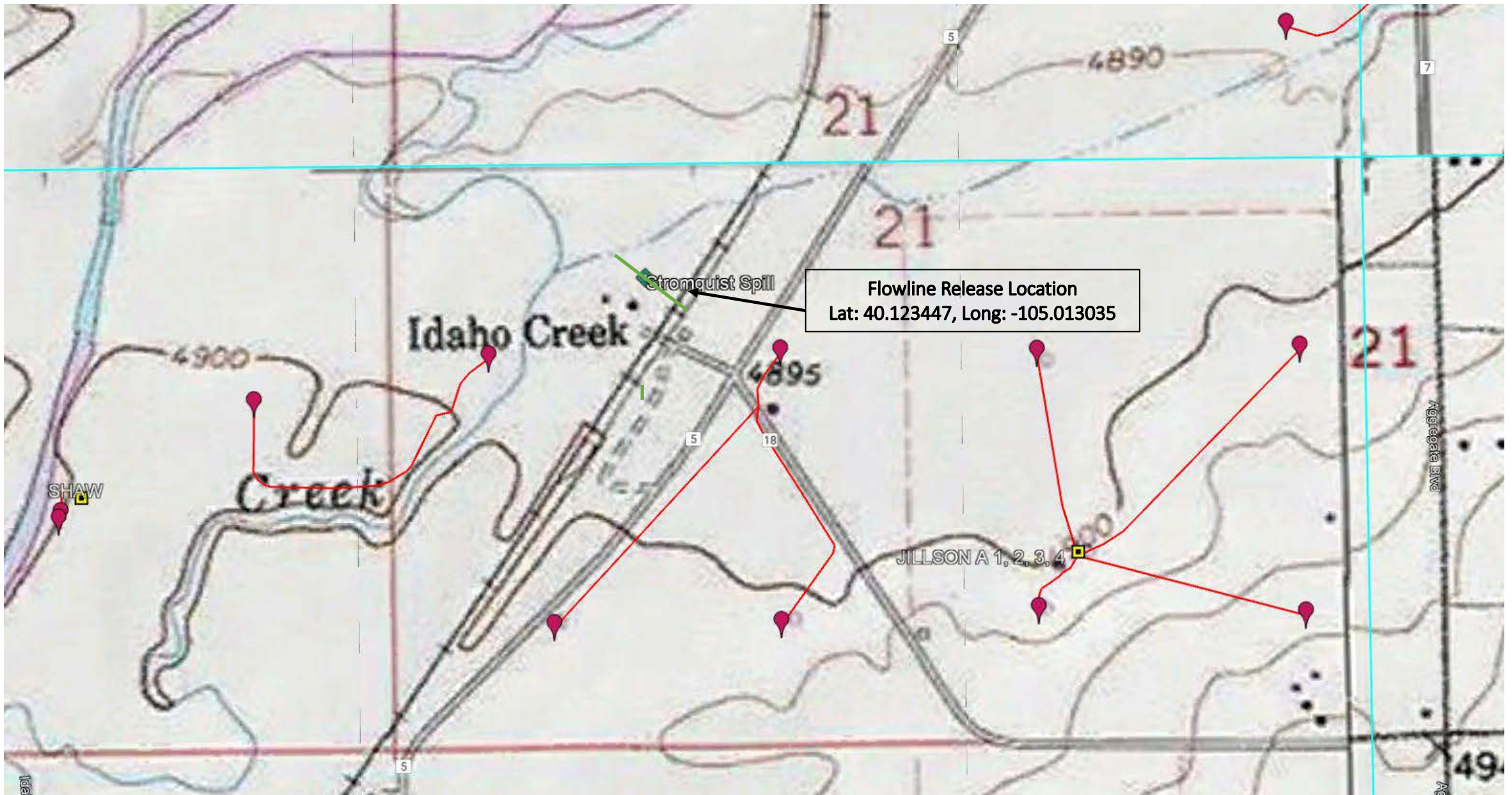
Date:	August 2022
Designed By:	K.P. Kauffman Co.
Drawn By:	RMG



K.P. Kauffman Co., Inc.
1700 Lincoln, #4550
Denver CO, 80203

K.P. Kauffman Company, Inc.
STROMQUIST Flowline Spill
NWSW, Sec 221, T2N, R68W; Weld County, Colorado

Figure #1
Site Map



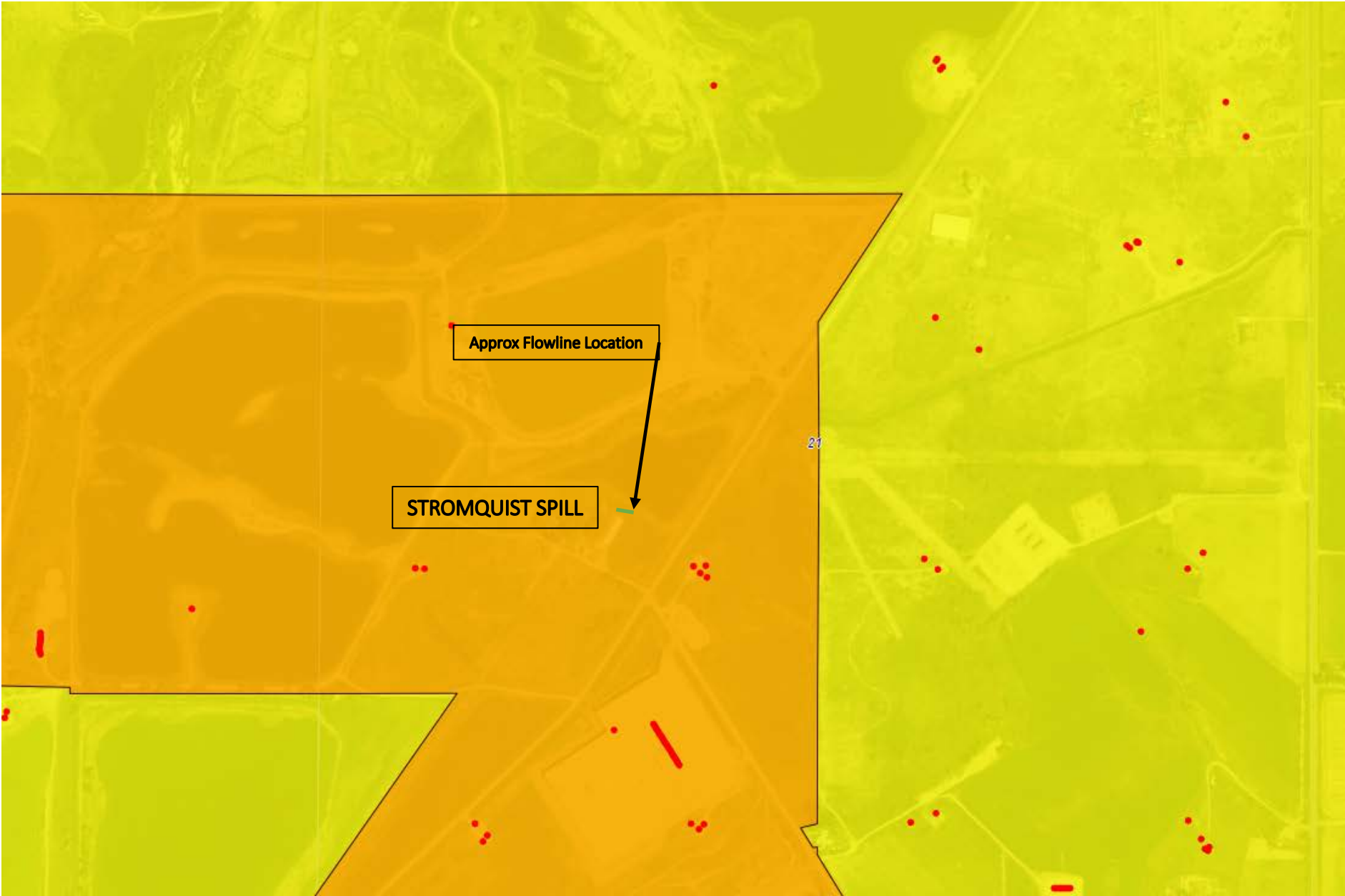
Date:	August 2022
Designed By:	K.P. Kauffman Co.
Drawn By:	RMG



K.P. Kauffman Co., Inc.
1700 Lincoln, #4550
Denver CO, 80203

K.P. Kauffman Company, Inc.
STROMQUIST Flowline Spill
NWSW, Sec 221, T2N, R68W; Weld County, Colorado

Figure #2
Topo Map



Date:	August 2022
Designed By:	K.P. Kauffman Co.
Drawn By:	RMG



K.P. Kauffman Co., Inc.
1700 Lincoln, #4550
Denver CO, 80203

K.P. Kauffman Company, Inc.
STROMQUIST Flowline Spill
NWSW, Sec 221, T2N, R68W; Weld County, Colorado

Figure #3
Government Map
Orange Frederick, Yellow Weld County