

Cement Verification Report - Cementer's Well Service, Inc.

P.O. BOX 336220 • GREELEY, CO 80633 • (970) 353-7299 • FAX (970) 353-7712

COGCC Operator Guidance

RULE #308.A.B(2)A.ii



CLIENT: PDC Energy	Cementor's FIELD TICKET #	300354-D
--------------------	------------------------------	----------

Requested Operator Guidance:

Well Name & Number	Lease	Stugart	Well No.	24N
Well API Number	05-123-51258			
Job Date	7/25/2022	Time on	21:15	24 hr time
Job Type	New Well Surface			
Cementing Company	Cementor's Well Service, Inc	Contact	Nate Kvamme - 303-324-4296	
Ambient conditions	clear	68	temp deg F	
Slurry Description				
a) Purpose	Surface - 9 5/8" 36# CSG, 13 1/2" hole			
b) Cement Class	ASTM C150 Type II			
c) Cement Yield	1.61	cuft / sk		
d) Cement Density	13.9	PPG		
e) Number of sks	810	sks (94# equiv)		
f) Mix Fluid Type				
Water / Cement	8.5	Gal / sk		
g) Slurry mixed	232.2	BBLs slurry		
h) Additives used	1.5% CaCl2	3.0%	Bentonite	
Total Water Used	323.5	BBLs H2O		
i) Displacement Fluid Vol	129.6	BBLs H2O		
j) Method of Placement				
k) Set Depth	1,718	feet (ft)		
l) Stage tool depth	n/a			
m) Float Collar Depth	1,676	feet (ft)		
n) Designed Top of Cement	n/a	to surface		
o) Centralizer depths	0	feet (ft)		
Charts - (pressure, density, pump rate)				
Landed Plug @	1669	psi	Final Lift Pressure @	280 psi
Cement Density (as weighed during job) @	13.9	PPG		
Job notes				
a) Plug down	<input checked="" type="radio"/> Y <input type="radio"/> N	Time	1:38	24 hr time
b) Floats held	<input checked="" type="radio"/> Y <input type="radio"/> N	7/25/2022		
c) Full Returns	<input checked="" type="radio"/> Y <input type="radio"/> N	Lost Circulation	<input checked="" type="radio"/> Y <input type="radio"/> N	
d) Cement to surface	<input checked="" type="radio"/> Y <input type="radio"/> N	38.0	BBLs to surface	
e) If no returns, top off	n/a	BBLs		
f) Top off detail				
g) Additional Detail				

Cementer's Well Service, Inc.

P.O. BOX 336220 • GREELEY, CO 80633 • (970) 353-7299 • FAX (970) 353-7712



PDC Energy

Surface Cement Job Graph & Casing Pressure Test

COMPANY DETAILS

Date	7/25/2022	API #	05-123-51258	Well No.	24N
County	Weld	State	CO	Lease	Stugart

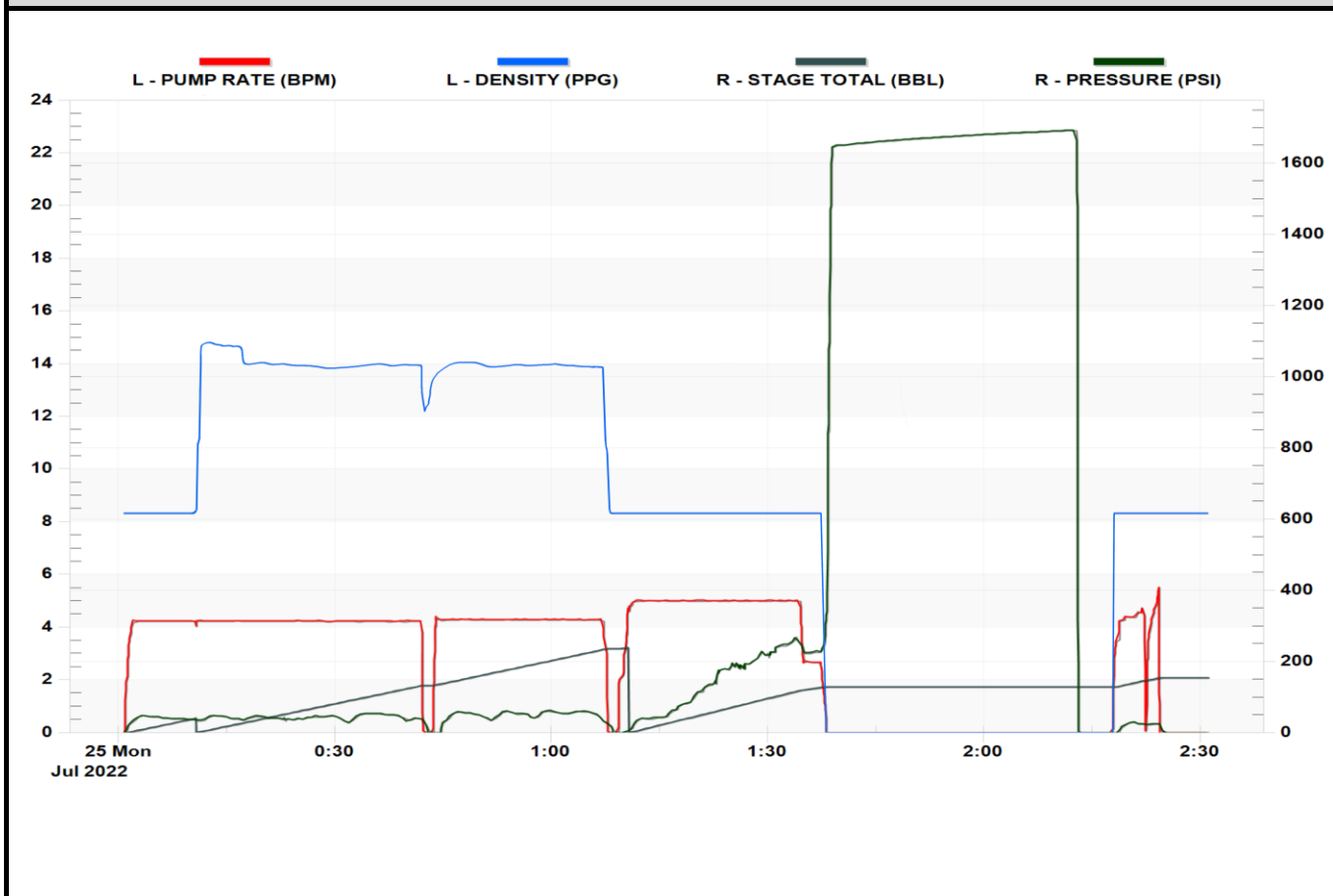
Client PDC Energy

Contact / email

JOB DETAILS

TIME ON	21:15	24 hr	Depth	1,728	ft.	Pressure Test @	1,669	psi
START TIME	0:01	7/25/22	Bottom of Surface	1,718	ft.	10 min	1,665	psi
END TIME	2:31	7/25/22	Plug Landed @	1,676	ft.	20 min	1,682	psi
			Plug Landed @	1:38	24 hr	30 min	1,690	psi

SUMMARY GRAPH





Centralizer Depths

Well Name: STUGART 24N

Surface, Set Depth: 1,717.8ftKB

API 05123512580000		Surface Legal Location SENW 20-5N-66W		Field Name Wattenberg		State CO		Well Configuration Type Horizontal	
Ground Elevation (ft) 4,885.00	Original KB Elevation (ft) 4,898.00	KB-Ground Distance (ft) 13.00		Spud Date	Rig Release Date	On Production Date		Abandon Date	

Casing Run Tally

Run #	Ref #	Item Des	OD (in)	Wt (lb/ft)	Grade	Run?	Len (ft)	Centralized?	Ext Jwlry	Connections	Top (ftKB)	Cum Len (ft)
2		Casing joints	9 5/8	36.00	J-55	Yes	41.38	Yes		LT&C	1,674.6	43.23
3		Casing joints	9 5/8	36.00	J-55	Yes	41.38	Yes		LT&C	1,633.2	84.61
4		Casing joints	9 5/8	36.00	J-55	Yes	41.38	Yes		LT&C	1,591.8	125.99
8		Casing joints	9 5/8	36.00	J-55	Yes	41.38	Yes		LT&C	1,426.6	291.21
12		Casing joints	9 5/8	36.00	J-55	Yes	41.36	Yes		LT&C	1,261.1	456.74
16		Casing joints	9 5/8	36.00	J-55	Yes	41.40	Yes		LT&C	1,095.6	622.23
20		Casing joints	9 5/8	36.00	J-55	Yes	41.40	Yes		LT&C	931.0	786.78
24		Casing joints	9 5/8	36.00	J-55	Yes	41.40	Yes		LT&C	765.5	952.31
28		Casing joints	9 5/8	36.00	J-55	Yes	41.38	Yes		LT&C	600.0	1,117.85
32		Casing joints	9 5/8	36.00	J-55	Yes	41.42	Yes		LT&C	434.3	1,283.49
36		Casing joints	9 5/8	36.00	J-55	Yes	41.38	Yes		LT&C	268.8	1,449.01