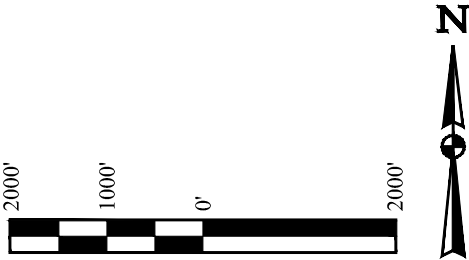


LEGEND

- = DSU BOUNDARY
- = SECTION LINE
- = 1/4 SECTION LINE
- - - = OIL & GAS LOCATION



UELS, LLC
Corporate Office * 85 South 200 East
Vernal, UT 84078 * (435) 789-1017



GMT EXPLORATION COMPANY, LLC

RAGGED 6-64 4 PAD
LOT 1, SECTION 4, T6S, R64W, 6th P.M.
ELBERT COUNTY, COLORADO

SURVEYED BY	ORION RICE, J.W.	05-10-22	SCALE
DRAWN BY	K.C.	06-06-22	1" = 2000'
OGDP			