

# Cement Verification Report - Cementer's Well Service, Inc.

P.O. BOX 336220 • GREELEY, CO 80633 • (970) 353-7299 • FAX (970) 353-7712

COGCC Operator Guidance

RULE #308.A.B(2)A.ii



CLIENT: PDC Energy	Cementor's FIELD TICKET #	300352-D
--------------------	------------------------------	----------

## Requested Operator Guidance:

Well Name & Number	Lease	Stugart	Well No.	22N		
Well API Number	05-123-51259					
Job Date	7/23/2022	Time on	11:00	24 hr time		
Job Type	New Well Surface					
Cementing Company	Cementor's Well Service, Inc	Contact	Nate Kvamme - 303-324-4296			
Ambient conditions	clear	98	temp deg F			
Slurry Description						
a) Purpose	Surface - 9 5/8" 36# CSG, 13 1/2" hole					
b) Cement Class	ASTM C150 Type II					
c) Cement Yield	1.61	cuft / sk				
d) Cement Density	13.9	PPG				
e) Number of sks	784	sks (94# equiv)				
f) Mix Fluid Type						
Water / Cement	8.5	Gal / sk				
g) Slurry mixed	224.7	BBLs slurry				
h) Additives used	1.5%	CaCl <sub>2</sub>	3.0%	Bentonite		
Total Water Used	318.3	BBLs H <sub>2</sub> O				
i) Displacement Fluid Vol	129.6	BBLs H <sub>2</sub> O				
j) Method of Placement						
k) Set Depth	1,715	feet (ft)				
l) Stage tool depth	n/a					
m) Float Collar Depth	1,677	feet (ft)				
n) Designed Top of Cement	n/a	to surface				
o) Centralizer depths	0	feet (ft)				

## Charts - (pressure, density, pump rate)

Landed Plug @ 1662 psi Final Lift Pressure @ 240 psi

Cement Density (as weighed during job) @ 13.9 PPG

## Job notes

a) Plug down	<input checked="" type="radio"/> Y <input type="radio"/> N	Time	15:46	24 hr time
b) Floats held	<input checked="" type="radio"/> Y <input type="radio"/> N		7/23/2022	
c) Full Returns	<input checked="" type="radio"/> Y <input type="radio"/> N	Lost Circulation	<input checked="" type="radio"/> Y <input type="radio"/> N	
d) Cement to surface	<input checked="" type="radio"/> Y <input type="radio"/> N	15.0	BBLs to surface	
e) If no returns, top off	n/a	BBLs		
f) Top off detail				
g) Additional Detail				

# Cementer's Well Service, Inc.

P.O. BOX 336220 • GREELEY, CO 80633 • (970) 353-7299 • FAX (970) 353-7712



PDC Energy

## Surface Cement Job Graph & Casing Pressure Test

### COMPANY DETAILS

Date	7/23/2022	API #	05-123-51259	Well No.	22N
County	Weld	State	CO	Lease	Stugart

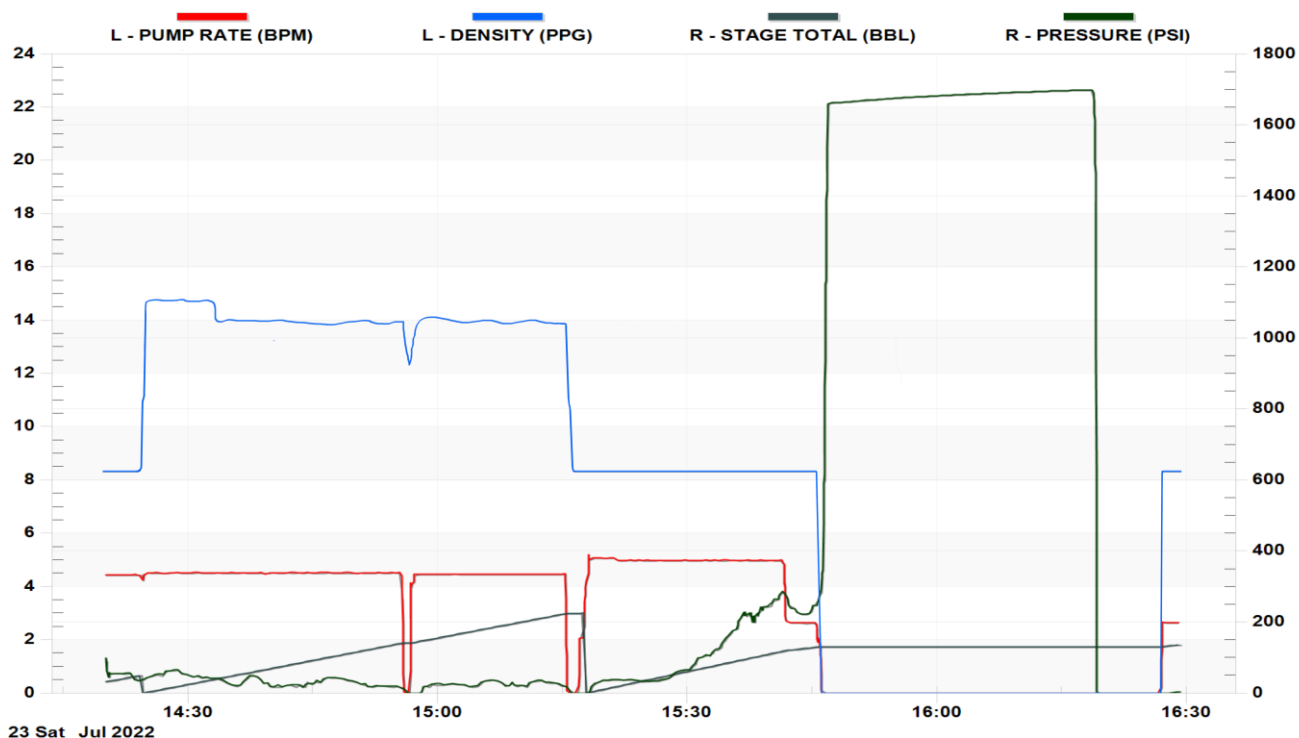
Client PDC Energy

Contact / email

### JOB DETAILS

TIME ON	11:00	24 hr	Depth	1,728	ft.	Pressure Test @	1,662	psi
START TIME	14:20	7/23/22	Bottom of Surface	1,715	ft.	10 min	1,675	psi
END TIME	16:29	7/23/22	Plug Landed @	1,677	ft.	20 min	1,691	psi
			Plug Landed @	15:46	24 hr	30 min	1,698	psi

### SUMMARY GRAPH





## Centralizer Depths

Well Name: STUGART 22N

Surface, Set Depth: 1,715.4ftKB

API 05123512590000		Surface Legal Location SENW 20-5N-66W		Field Name Wattenberg		State CO		Well Configuration Type Horizontal	
Ground Elevation (ft) 4,885.00	Original KB Elevation (ft) 4,898.00	KB-Ground Distance (ft) 13.00		Spud Date	Rig Release Date	On Production Date		Abandon Date	

### Casing Run Tally

Run #	Ref #	Item Des	OD (in)	Wt (lb/ft)	Grade	Run?	Len (ft)	Centralized?	Ext Jwlry	Connections	Top (ftKB)	Cum Len (ft)
2		Casing joints	9 5/8	36.00	J-55	Yes	41.39	Yes		LT&C	1,672.2	43.24
3		Casing joints	9 5/8	36.00	J-55	Yes	41.36	Yes		LT&C	1,630.8	84.60
4		Casing joints	9 5/8	36.00	J-55	Yes	41.39	Yes		LT&C	1,589.4	125.99
8		Casing joints	9 5/8	36.00	J-55	Yes	41.41	Yes		LT&C	1,423.9	291.54
12		Casing joints	9 5/8	36.00	J-55	Yes	41.38	Yes		LT&C	1,258.8	456.62
16		Casing joints	9 5/8	36.00	J-55	Yes	41.38	Yes		LT&C	1,093.3	622.12
20		Casing joints	9 5/8	36.00	J-55	Yes	41.39	Yes		LT&C	927.8	787.58
24		Casing joints	9 5/8	36.00	J-55	Yes	40.83	Yes		LT&C	762.9	952.52
28		Casing joints	9 5/8	36.00	J-55	Yes	41.39	Yes		LT&C	597.7	1,117.72
32		Casing joints	9 5/8	36.00	J-55	Yes	41.40	Yes		LT&C	432.6	1,282.79
36		Casing joints	9 5/8	36.00	J-55	Yes	41.39	Yes		LT&C	267.1	1,448.29
40		Casing joints	9 5/8	36.00	J-55	Yes	41.35	Yes		LT&C	102.0	1,613.45
41		Casing joints	9 5/8	36.00	J-55	Yes	40.03	Yes		LT&C	61.9	1,653.48