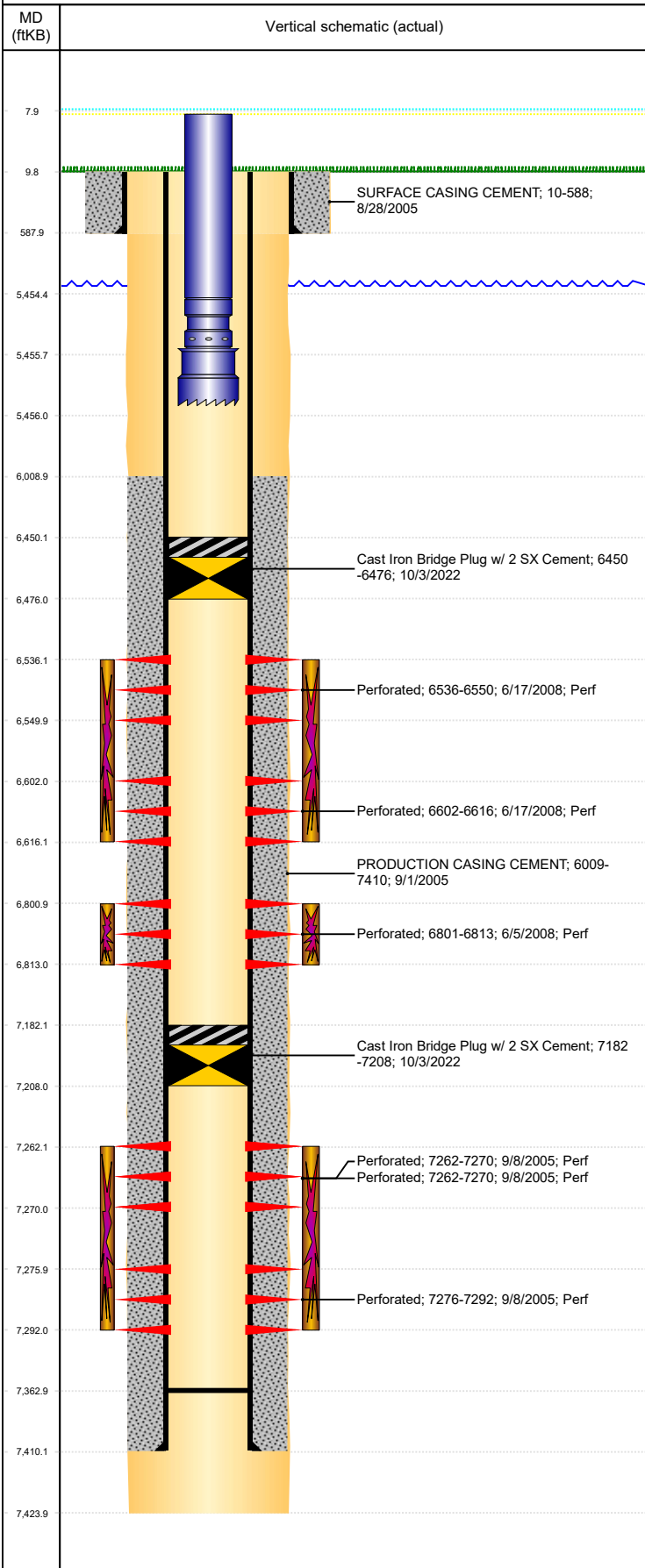




P&A Wellbore For State

Well Name: GUTTERSEN STATE CC32-05

Land, Original Hole, 10/21/2022 9:19:45 AM



Well Header									
Surface UWI 0512322895		Business Unit Rockies		Gov Auth Dist		Prod Tree Loc Land			
Orig. KB to Gnd (ft) 10.00		Original Spud Date 8/27/2005		Abandon Date		Well Sub-Status TA		High...	
								N	
Comment									
Surface Location (Congressional)									
Qtr 3 SW	Qtr 4 NW	Section 32	Twonshp 4	Twonsh... N	Range 63	Rng E... W	Latitude (°) 40.27104846 6	Longitude (°) -104.468884956	
Wellbore Sections									
Section Des		Hole Size (in)		Act Top (ftKB)		Act Btm (ftKB)			
SURFACE		12 1/4		10.0		588.0			
PRODUCTION		7 7/8		588.0		7,424.0			
Casing Strings									
Csg Des		Run Date		OD (in)		Wt/Len (lb/ft)		Grade	
Surface		8/28/2005		8 5/8		24.00		J-55	
Production Casing		9/1/2005		4 1/2		11.60		M-80	
								Top Depth (MD) (ftKB) 10	
								Set Depth (MD) (ftKB) 588	
								10	
								7410	
Cement									
Des		Start Date		Top (ftKB)		Btm (ftKB)			
SURFACE CASING CEMENT		8/28/2005		10.0		588.0			
PRODUCTION CASING CEMENT		9/1/2005		6,009.0		7,410.0			
Zone Statuses									
Zone Name		Status Date		Status		Fluid Type		Job	
J SAND		6/3/2009		PR				RECOMPLETION, 6/3/2008 06:00	
J SAND		7/15/2017		PR					
NIOBRARA		8/14/2008		PR					
NIOBRARA		6/3/2009		PR				Flowing	
CODELL		6/3/2009		PR				Flowing	
CODELL		7/15/2017		PR					
Perforation Data									
Linked Zone		Explosive Type		Entered Shot Total		Top (ftKB)		Btm (ftKB)	
NIOBRARA, Original Hole		A		28		6,536.0		6,550.0	
NIOBRARA, Original Hole		B		28		6,602.0		6,616.0	
CODELL, Original Hole				48		6,801.0		6,813.0	
J SAND, Original Hole				32		7,262.0		7,270.0	
J SAND, Original Hole				32		7,262.0		7,270.0	
J SAND, Original Hole				64		7,276.0		7,292.0	
Stimulation Intervals									
Zone		Start Date		Top (ftKB)		Btm (ftKB)			
NIOBRARA, Original Hole		6/17/2008		6,536.0		6,616.0			
CODELL, Original Hole		6/17/2008		6,801.0		6,813.0			
J SAND, Original Hole		10/28/2005		7,262.0		7,292.0			
Other In Hole									
Run Date		Des		Make		OD (in)		Top (ftKB)	
10/3/2022		Cast Iron Bridge Plug w/ 2 SX Cement				4		6,450.0	
10/3/2022		Cast Iron Bridge Plug w/ 2 SX Cement				4		7,182.0	
								Btm (ftKB) 7,208.0	
Logs									
Date		Type		Depth Top (MD) (ftKB)		Btm (ftKB)			
9/1/2005		Compensated Density		4,000		7,417.0			
9/1/2005		Induction		588		7,417.0			
9/8/2005		CBL/CCL/GR		5,800		7,417.0			
Plug Back Total Depths									
Date		Type		Com		PBTD (ftKB)			
6/4/2008		CEMENT PLUG				7,394			
8/11/2008		CIBP		PUSH THE CAST IRON BRIDGE PLUG TO THIS DEPTH		7,363			