

**SWN**  
**Dill Gulch 1-22**  
**Location # 434520**



**location**



**location/weeds**



**SWN**  
**Dill Gulch 1-22**  
**Location # 434520**



**Location/weeds**



**location/weeds**





**SWN**  
**Dill Gulch 1-22**  
**Location # 434520**



**Stored equipment and weeds**



**Stored equipment and weeds**





**SWN**  
**Dill Gulch 1-22**  
**Location # 434520**



**Weeds and stored equipment**



**Weeds**

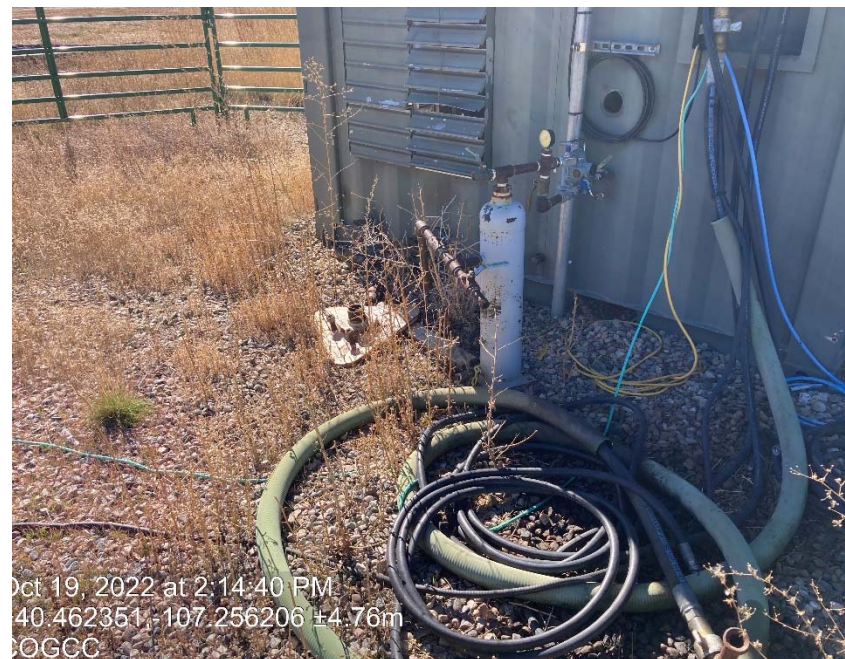




**SWN**  
**Dill Gulch 1-22**  
**Location # 434520**



**Staining/debris/weeds**



**Debris**



**SWN**  
**Dill Gulch 1-22**  
**Location # 434520**



**Stored equipment**



**Debris**



**SWN**  
**Dill Gulch 1-22**  
**Location # 434520**



**Debris**



**Weeds**



**SWN**  
**Dill Gulch 1-22**  
**Location # 434520**



**Weeds**



**Weeds**





**SWN**  
**Dill Gulch 1-22**  
**Location # 434520**



**Weeds**



**Weeds**





**SWN**  
**Dill Gulch 1-22**  
**Location # 434520**



**Weeds**



**Staining**





**SWN**  
**Dill Gulch 1-22**  
**Location # 434520**



**Load line missing cap/plug**



**Open hole for wildlife to enter**





**SWN**  
**Dill Gulch 1-22**  
**Location # 434520**



**Stored equipment/debris**



**Weeds**



**COLORADO**  
Oil & Gas Conservation  
Commission  
Department of Natural Resources