



---

# **Terra Energy Partners, LLC**

## **SURFACE POST JOB REPORT**

**FEDERAL NR 544-36 05-045-24463**  
**S:3 T:6S R:94W Garfield CO**

CallSheet #: 82134  
Proposal #: 60877



**SURFACE Post Job Report**

**Attention:** Mr. Dustin Childers | (936) 524-8828 | dchilders@terraep.com  
Terra Energy Partners, LLC  
4828 Loop Central Dr., Suite 900 | Houston, TX 77081

---

Dear Mr. Dustin Childers,

Thank you for the opportunity to provide cementing services on this well. American Cementing strives to achieve complete customer satisfaction. If you have any questions regarding the services or data provided, please contact American Cementing at any time.

Sincerely,

**Krystal Schell**

Field Engineer I | (719) 992-1830 | krystal.schell@americacementing.com

**Field Office**      28730 US-6, Rifle, CO 81650  
Phone: (970) 657-1157

## Job Details & Summary

### Geometry

Type	Function	OD (in)	ID (in)	Weight (lb/ft)	Thread	Top (ft)	Bottom (ft)	Excess (%)
Casing	Outer	20	19.124	94	n/a	0	86	0
Open Hole	Outer	n/a	13.5	n/a	n/a	108	500	16
Open Hole	Outer	n/a	13.5	n/a	n/a	500	1117	16
Casing	Inner	9.625	8.921	36	n/a	0	1117	0

### Equipment / People

Unit Type	Unit	Power Unit	Employee #1	Employee #2
Cement Trailer Float	CTF-246	TRC(TRB)-424	Carrasco, Joel	
Cement Pump Float	CPF-136	TRH-1137	Woronovitch, Collin	
Light Duty Vehicles	LDV-061		Aden, Mark	Barber, Tonya

### Timing

Event	Date/Time
Call Out	6/24/2022 15:00
Depart Facility	6/24/2022 22:30
On Location	6/24/2022 23:09
Rig Up Iron	6/24/2022 23:40
Job Started	6/25/2022 01:00
Job Completed	6/25/2022 02:32
Rig Down Iron	6/25/2022 02:40
Depart Location	6/25/2022 03:40

### General Job Information

Metrics	Value
Well Fluid Density	9 lb/gal
Well Fluid Type	WBM
Rig Circulation Vol	660 bbls
Rig Circulation Time	1 hours
Calculated Displacement	83 bbls
Actual Displacement	83 bbls
Total Spacer to Surface	20 bbls
Total CMT to Surface	34 bbls
Well Topped Out	No

### Job Details

Metrics	Value
Flare Prior to Job	No
Flare Prior to Job	0 units
Flare During Job	No
Flare During Job	0 units
Flare at End of Job	No
Flare at End of Job	0 units
Well Full Prior to Job	Yes
Well Fluid Density Into Well	9 lb/gal
Well Fluid Density Out of Well	9 lb/gal

### Job Details (cont.)

Metrics	Value
BHCT	80 °F
BHST	98 °F

### Water Analysis

Metrics	Value	Recommended
Water Source	Upright Rig Tank	
Temperature	67.1 °F	50-80 °F
pH Level	7	5.5-8.5
Chlorides	0 mg/L	0-3000 mg/L
Total Alkalinity	180	0-1000
Total Hardness	425 mg/L	0-500 mg/L
Carbonates	0 mg/L	0-100 mg/L
Sulfates	<200 mg/L	0-1500 mg/L
Potassium	0 mg/L	0-3000 mg/L
Iron	0 mg/L	0-300 mg/L

### Circulation

Lost Circulation Experienced
No

## Job Execution Information

Fluid	Product	Function	Density (lb/gal)	Yield (ft <sup>3</sup> /sk)	Water Rq. (gal/sk)	Water Rq. (gal/bbl)	Volume (sks)	Volume (bbl)	Designed Top (ft)
1	Water	Flush	8.34			42.00		20.00	0
2	Lead	Lead	12.30	2.21	12.72		179.00	70.56	0
3	Tail	Tail	12.80	1.97	10.87		183.00	64.05	500
4	Water	DisplacementFinal	8.34			42.00		82.00	0

## Job Fluid Details

Fluid	Type	Fluid	Product	Function	Conc.	Uom
2	Lead	Lead	ASTM TYPE I/II	Cement	100.00	%
2	Lead	Lead	A-7P	Accelerator	2.00	lb/sk
2	Lead	Lead	FP-24	Defoamer	0.30	%BWOB
2	Lead	Lead	IntegraSeal POLI	LostCirculation	0.25	lb/sk
2	Lead	Lead	STATIC FREE	Other	0.01	lb/sk
2	Lead	Lead	XCem-1101	Thixotropic	1.00	lb/sk
3	Tail	Tail	ASTM TYPE I/II	Cement	100.00	%
3	Tail	Tail	A-7P	Accelerator	2.00	lb/sk
3	Tail	Tail	FP-24	Defoamer	0.30	%BWOB
3	Tail	Tail	IntegraSeal POLI	LostCirculation	0.25	lb/sk
3	Tail	Tail	STATIC FREE	Other	0.01	lb/sk
3	Tail	Tail	XCem-1101	Thixotropic	1.00	lb/sk

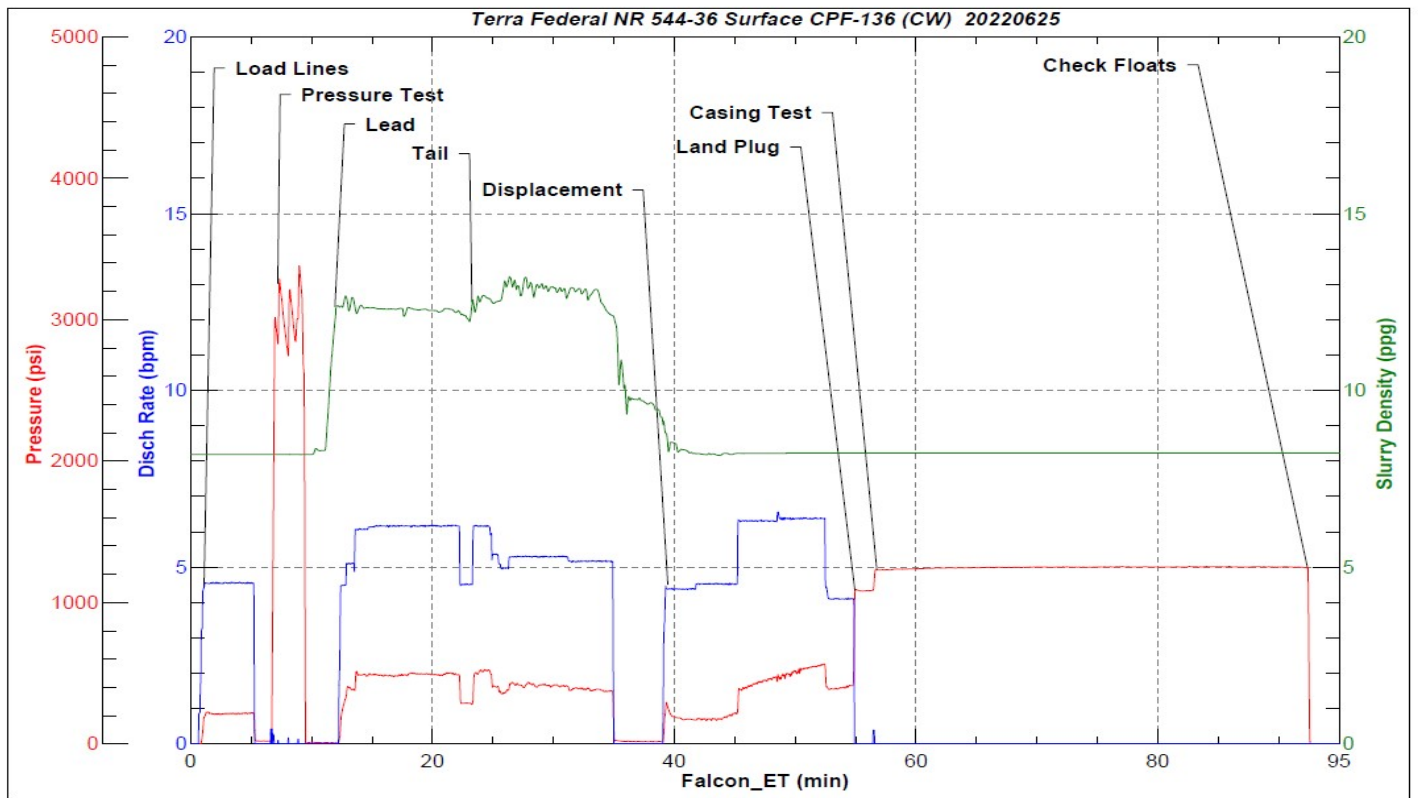
## Job Logs

Line	Event	Date (MM/DD/YY)	Time (HH:MM)	Density (lb/gal)	Pump Rate (bpm)	Pump Volume (bbls)	Pipe Pressure (psi)	Comment
1	Callout	5/24/2022	15:00					Yard call 21:00 on location 23:00
2	Depart For Location	5/24/2022	22:30					Leave Rifle yard for location
3	Arrive On Location	5/24/2022	23:09					Arrive on location, rig running casing
4	Spot Equipment	5/24/2022	23:30					Spot in all equipment
5	Rig Up Iron	5/24/2022	23:40					Pre-rig up safety meeting, rig in all equipment, and lines to the standpipe
6	End Circulation	5/25/2022	00:29					Rig ended circulation, circulated 1 hr @ 11 BBLS/min total of 660 BBLS
7	Safety Meeting	5/25/2022	00:30					Pre-job safety meeting with company man
8	Pump Spacer	5/25/2022	01:00	8.34	4.5	20	222	Pumping freshwater spacer, returns
9	Pressure Test Lines	5/25/2022	01:05				3000	Pressure test
10	Pump Lead Cement	5/25/2022	01:12	12.3	6	0	500	Pumping lead cement
11	Pump Lead Cement	5/25/2022	01:20	12.3	6	50	475	Pumping lead cement
12	Pump Lead Cement	5/25/2022	01:22	12.3	6	71	501	Pumping lead cement
13	Pump Tail Cement	5/25/2022	01:23	12.8	6	0	520	Pumping tail cement
14	Pump Tail Cement	5/25/2022	01:29	12.8	5	50	600	Pumping tail cement
15	Pump Tail Cement	5/25/2022	01:34	12.8	5	64	522	Pumping tail cement
16	Drop Top Plug	5/25/2022	01:35					Dropped top plug verified by company man
17	Pump Displacement	5/25/2022	01:38	8.34	4.5	0	265	Pumping freshwater displacement
18	Cement Back to Surface	5/25/2022	01:48			49		Cement to surface @ 49 BBLS pumped. Total of 34 BBLS to surface
19	Pump Displacement	5/25/2022	01:48	8.34	6.5	50	520	Pumping freshwater displacement
20	Pump Displacement	5/25/2022	01:54	8.34	4	83	425	Pumping freshwater displacement
21	Land Plug	5/25/2022	01:54				1102	Land plug, FCP 425 PSI pumped to 1102 PSI
22	Casing Test	5/25/2022	01:56				1251	Take pressure up to 1251 psi.
23	End Casing Test	5/25/2022	02:31				1267	Pressure at 1267 psi.
24	Check Floats	5/25/2022	02:32					Bled pressure, floats held 2 BBLS, bled back
25	Rig Down Iron	5/25/2022	02:40					Pre-rig down safety meeting, rig down lines
26	Depart Location	5/25/2022	03:40					Leave location for Rifle shop

## Pump Diagrams



JobMaster Program Version 5.01C1  
Job Number: 82134  
Customer: Terra  
Well Name: Federal NR 544-36



Job Start: Saturday, June 25, 2022