



Terra Energy Partners, LLC

SURFACE POST JOB REPORT

FEDERAL NR 42-3 05-045-24477
S:3 T:6S R:94W Garfield CO

CallSheet #: 81050
Proposal #: 59032



SURFACE Post Job Report

Attention: Mr. Dustin Childers | (936) 524-8828 | dchilders@terraep.com
Terra Energy Partners, LLC
4828 Loop Central Dr., Suite 900 | Houston, TX 77081

Dear Mr. Dustin Childers,

Thank you for the opportunity to provide cementing services on this well. American Cementing strives to achieve complete customer satisfaction. If you have any questions regarding the services or data provided, please contact American Cementing at any time.

Sincerely,

Michael Harold

Field Engineer II | (970) 773-3636 | michael.harold@americacementing.com

Field Office 28730 US-6, Rifle, CO 81650
Phone: (970) 657-1157

Job Details & Summary

Geometry

Type	Function	OD (in)	ID (in)	Weight (lb/ft)	Thread	Top (ft)	Bottom (ft)	Excess (%)
Open Hole	Outer	n/a	13.5	n/a	n/a	0	500	16
Open Hole	Outer	n/a	13.5	n/a	n/a	500	1118	16
Casing	Inner	9.625	8.921	36	n/a	0	1118	0

Equipment / People

Unit Type	Unit	Power Unit	Employee #1	Employee #2
Cement Trailer	CTF-522	TRC(TRB)-201	Kirchenwitz, Jacob	Morales, Adrian
Cement Pump	CPF-012	TRH-964	Gonzales, Ivan	
Light Duty Vehicles	LDV-083		Aden, Mark	

Timing

Event	Date/Time
Call Out	4/16/2022 15:15
Depart Facility	4/16/2022 19:00
On Location	4/16/2022 22:10
Rig Up Iron	4/16/2022 22:20
Job Started	4/17/2022 01:50
Job Completed	4/17/2022 02:34
Rig Down Iron	4/17/2022 02:45
Depart Location	4/17/2022 03:30

General Job Information

Metrics	Value
Well Fluid Density	9 lb/gal
Well Fluid Type	WBM
Rig Circulation Vol	643 bbls
Rig Circulation Time	0.5 hours
Calculated Displacement	84 bbls
Actual Displacement	84 bbls
Total Spacer to Surface	0 bbls
Total CMT to Surface	29 bbls
Well Topped Out	No

Job Details

Metrics	Value
Flare Prior to Job	No
Flare Prior to Job	0 units
Flare During Job	No
Flare During Job	0 units
Flare at End of Job	No
Flare at End of Job	0 units
Well Full Prior to Job	Yes
Well Fluid Density Into Well	9 lb/gal
Well Fluid Density Out of Well	9 lb/gal

Job Details (cont.)

Metrics	Value
BHCT	80 °F
BHST	97 °F

Water Analysis

Metrics	Value	Recommended
Water Source	Upright Rig Tank	
Temperature	62.4 °F	50-80 °F
pH Level	7	5.5-8.5
Chlorides	0 mg/L	0-3000 mg/L
Total Alkalinity	180	0-1000
Total Hardness	425 mg/L	0-500 mg/L
Carbonates	0 mg/L	0-100 mg/L
Sulfates	<200 mg/L	0-1500 mg/L
Potassium	0 mg/L	0-3000 mg/L
Iron	0 mg/L	0-300 mg/L

Circulation

Lost Circulation Experienced	Losses into Spacer	Losses into Cement	Losses into Displacement
No			

Job Execution Information

Fluid	Product	Function	Density (lb/gal)	Yield (ft ³ /sk)	Water Rq. (gal/sk)	Water Rq. (gal/bbl)	Volume (sks)	Volume (bbl)	Designed Top (ft)
1	Water	Flush	8.34			42.00		20.00	0
2	Lead	Lead	12.30	2.21	12.72		129.00	50.85	0
3	Tail	Tail	12.80	1.97	10.87		183.00	64.05	500
4	Water	DisplacementFinal	8.34			42.00		82.00	0

Job Fluid Details

Fluid	Type	Fluid	Product	Function	Conc.	Uom
2	Lead	Lead	ASTM TYPE I/II	Cement	100.00	%
2	Lead	Lead	A-7P	Accelerator	2.00	lb/sk
2	Lead	Lead	FP-24	Defoamer	0.30	%BWOB
2	Lead	Lead	IntegraSeal POLI	LostCirculation	0.25	lb/sk
2	Lead	Lead	STATIC FREE	Other	0.01	lb/sk
2	Lead	Lead	XCem-1101	Thixotropic	1.00	lb/sk
3	Tail	Tail	ASTM TYPE I/II	Cement	100.00	%
3	Tail	Tail	A-7P	Accelerator	2.00	lb/sk
3	Tail	Tail	FP-24	Defoamer	0.30	%BWOB
3	Tail	Tail	IntegraSeal POLI	LostCirculation	0.25	lb/sk
3	Tail	Tail	STATIC FREE	Other	0.01	%BWOB
3	Tail	Tail	XCem-1101	Thixotropic	1.00	lb/sk

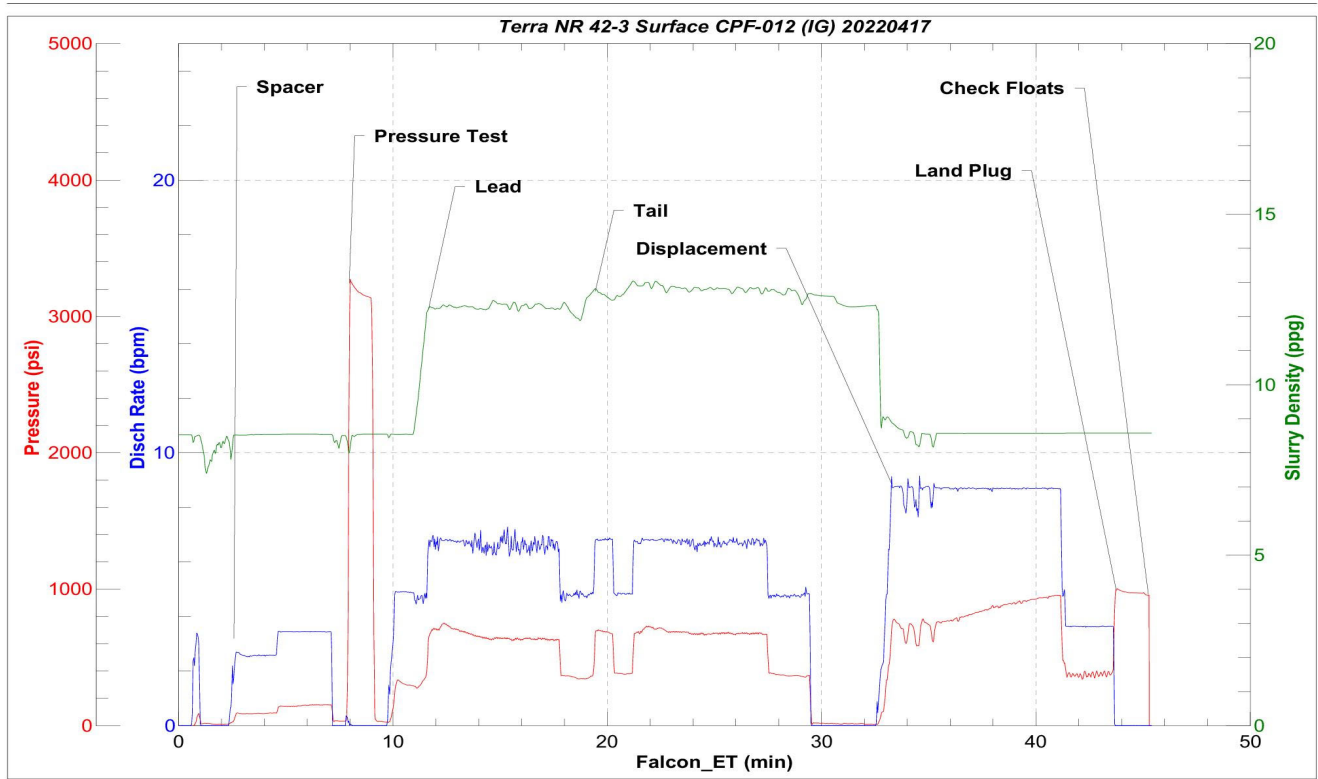
Job Logs

Line	Event	Date (MM/DD/YY)	Time (HH:MM)	Density (lb/gal)	Pump Rate (bpm)	Pump Volume (bbls)	Pipe Pressure (psi)	Comment
1	Callout	4/16/2022	15:15					On location 2300
2	Depart For Location	4/16/2022	19:00					Leave Rifle yard for location
3	Arrive On Location	4/16/2022	22:10					Arrive on location
4	Spot Equipment	4/16/2022	22:15					Spot in all equipment
5	Rig Up Iron	4/16/2022	22:20					Pre rig up safety meeting, rig in all equipment and lines to the cellar
6	End Circulation	4/17/2022	01:30					Rig ended circulation, circulated 30 mins @ 900 gpm, total of 643 BBLs
7	Safety Meeting	4/17/2022	01:40					Pre job safety meeting with company man
8	Pump Spacer	4/17/2022	01:53	8.34	2.5	20	93	Pumping fresh water spacer, returns
9	Pressure Test Lines	4/17/2022	01:58				3000	Pressure test
10	Pump Lead Cement	4/17/2022	02:02	12.3	7	0	659	Pumping lead cement
11	Pump Lead Cement	4/17/2022	02:09	12.3	5	51	373	Pumping lead cement
12	Pump Tail Cement	4/17/2022	02:09	12.5	5	0	377	Pumping tail cement
13	Pump Tail Cement	4/17/2022	02:17	12.5	7	50	818	Pumping tail cement
14	Pump Tail Cement	4/17/2022	02:20	12.5	4.5	64	407	Pumping tail cement
14	Drop Top Plug	4/17/2022	02:21					Dropped top plug verified by company man
15	Pump Displacement	4/17/2022	02:23	8.34	9	0	757	Pumping fresh water displacement
16	Pump Displacement	4/17/2022	02:29	8.34	9	50	895	Pumping fresh water displacement
17	Cement Back to Surface	4/17/2022	02:29			55		Cement to surface @ 55 BBLs pumped. Total of 29 BBLs to surface
18	Pump Displacement	4/17/2022	02:34	8.34	4	84	520	Pumping fresh water displacement
19	Land Plug	4/17/2022	02:34				1003	Land plug, FCP 520 PSI bumped to 1003 PSI
20	Check Floats	4/17/2022	02:36					Bled pressure, floats held .5 BBL bled back
21	Rig Down Iron	4/17/2022	02:45					Pre rig down safety meeting, rig down lines in the cellar
22	Depart Location	4/17/2022	03:30					Leave location for Rifle shop

Pump Diagrams



JobMaster Program Version 5.01C1
Job Number: 81050
Customer: Terra
Well Name: NR 42-3



BJ Services

Job Start: Sunday, April 17, 2022