



Terra Energy Partners, LLC

LONG STRING POST JOB REPORT

FEDERAL NR 443-4 05-045-24476
S:3 T:6S R:94W Garfield CO

CallSheet #: 80893
Proposal #: 58914



LONG STRING Post Job Report

Attention: Mr. Dustin Childers | (936) 524-8828 | dchilders@terraep.com
Terra Energy Partners, LLC
4828 Loop Central Dr., Suite 900 | Houston, TX 77081

Dear Mr. Dustin Childers,

Thank you for the opportunity to provide cementing services on this well. American Cementing strives to achieve complete customer satisfaction. If you have any questions regarding the services or data provided, please contact American Cementing at any time.

Sincerely,

Michael Harold

Field Engineer II | (970) 773-3636 | michael.harold@americacementing.com

Field Office 28730 US-6, Rifle, CO 81650
Phone: (970) 657-1157

Job Details & Summary

Geometry

Type	Function	OD (in)	ID (in)	Weight (lb/ft)	Thread	Top (ft)	Bottom (ft)	Excess (%)
Casing	Outer	9.625	8.921	36	n/a	0	1124	0
Open Hole	Outer	n/a	8.75	n/a	n/a	1100	8154	45
Open Hole	Outer	n/a	8.75	n/a	n/a	8154	10954	45
Casing	Inner	4.5	4	11.6	n/a	0	10954	0

Equipment / People

Unit Type	Unit	Power Unit	Employee #1	Employee #2
Field Storage Silo	FSS(CTS)-438			
Field Storage Silo	FSS(CTS)-470			
AS Cement Trailer	CTF-9299	TRB-421		
AS Cement Trailer	CTF-9309	TRC(TRB)-090		
Cement Trailer	CTF-246	TRC(TRB)-115	Richey, Steven	Bradbrook, Jeremy
Cement Trailer	CTF-579	TRC(TRB)-201		
Cement Pump	CPF-012	TRH-964	Gonzales, Ivan	
Light Duty Vehicles	LDV-063		Castillo, Francisco	

Timing

Event	Date/Time
Call Out	4/8/2022 22:00
Depart Facility	4/8/2022 23:55
On Location	4/9/2022 00:30
Rig Up Iron	4/9/2022 00:40
Job Started	4/9/2022 04:58
Job Completed	4/9/2022 06:52
Rig Down Iron	4/9/2022 07:05
Depart Location	4/9/2022 08:00

General Job Information

Metrics	Value
Well Fluid Density	10.8 lb/gal
Well Fluid Type	WBM
Rig Circulation Vol	540 bbls
Rig Circulation Time	1 hours
Calculated Displacement	169 bbls
Actual Displacement	169 bbls
Total Spacer to Surface	0 bbls
Total CMT to Surface	0 bbls
Well Topped Out	N/A

Job Details

Metrics	Value
Flare Prior to Job	No
Flare Prior to Job	0 units
Flare During Job	No
Flare During Job	0 units
Flare at End of Job	No
Flare at End of Job	0 units
Well Full Prior to Job	Yes
Well Fluid Density Into Well	10.8 lb/gal
Well Fluid Density Out of Well	10.8 lb/gal

Job Details (cont.)

Metrics	Value
BHCT	192 °F
BHST	253 °F

Water Analysis

Metrics	Value	Recommended
Water Source	Upright Rig Tank	
Temperature	65 °F	50-80 °F
pH Level	6	5.5-8.5
Chlorides	0 mg/L	0-3000 mg/L
Total Alkalinity	240	0-1000
Total Hardness	250 mg/L	0-500 mg/L
Carbonates	0 mg/L	0-100 mg/L
Sulfates	200 mg/L	0-1500 mg/L
Potassium	250 mg/L	0-3000 mg/L
Iron	0 mg/L	0-300 mg/L

Circulation

Lost Circulation Experienced	Losses into Spacer	Losses into Cement	Losses into Displacement
No			

Job Execution Information

Fluid	Product	Function	Density (lb/gal)	Yield (ft ³ /sk)	Water Rq. (gal/sk)	Water Rq. (gal/bbl)	Volume (sks)	Volume (bbl)	Designed Top (ft)
1	Water	Flush	8.34			42.00		10.00	5821
2	Mud Flush	Flush	8.45			40.86		20.00	5947
3	Water	Flush	8.34			42.00		10.00	6199
4	12.7 Lead	Lead	12.70	2.00	10.99		407.00	145.15	6325
5	14.2 Tail	Tail	14.20	1.72	8.09		747.00	229.01	8154
6	Displacement	DisplacementFinal	8.34			42.00		169.00	0

Job Fluid Details

Fluid	Type	Fluid	Product	Function	Conc.	Uom
2	Flush	Mud Flush	SAPP	Surfactant	10.00	lb/bbl
2	Flush	Mud Flush	SS-201	Surfactant	0.50	gal/bbl
4	Lead	12.7 Lead	ASTM TYPE I/II	Cement	100.00	%
4	Lead	12.7 Lead	BA-90	BondEnhancer	3.00	lb/sk
4	Lead	12.7 Lead	FL-66	FluidLoss	0.50	%BWOB
4	Lead	12.7 Lead	FP-24	Defoamer	0.30	%BWOB
4	Lead	12.7 Lead	GW-86	Viscosifier	0.10	%BWOB
4	Lead	12.7 Lead	IntegraSeal POLI	LostCirculation	0.25	lb/sk
4	Lead	12.7 Lead	R-3	Retarder	0.45	%BWOB
4	Lead	12.7 Lead	STATIC FREE	Other	0.01	lb/sk
5	Tail	14.2 Tail	CLASS G	Cement	80.00	%
5	Tail	14.2 Tail	FLY ASH (POZZOLAN)	Extender	20.00	%
5	Tail	14.2 Tail	FL-66	FluidLoss	0.40	%BWOB
5	Tail	14.2 Tail	FP-24	Defoamer	0.30	%BWOB
5	Tail	14.2 Tail	GW-86	Viscosifier	0.10	%BWOB
5	Tail	14.2 Tail	IntegraSeal POLI	LostCirculation	0.25	lb/sk
5	Tail	14.2 Tail	R-3	Retarder	0.15	%BWOB
5	Tail	14.2 Tail	S-8	StrengthRetrogression	27.00	%BWOB

Job Logs

Line	Event	Date (MM/DD/YY)	Time (HH:MM)	Density (lb/gal)	Pump Rate (bpm)	Pump Volume (bbls)	Pipe Pressure (psi)	Comment
1	CALLOUT	4/8/2022	22:00					ON LOCATION AT 02:00 HRS
2	LEAVE THE YARD	4/8/2022	23:55					CREW LEAVE THE YARD
3	ON LOCATION	4/9/2022	00:30					ON LOCATION
4	RIG UP	4/9/2022	00:40					RIG UP MEETING, RIG UP
5	SAFETY MEETING	4/9/2022	04:30					PRE-JOB SAFETY MEETING
6	PRESSURE TEST	4/9/2022	04:54				5320	PRESSURE TEST LINES
7	PUMP SPACER	4/9/2022	04:58	8.34	5	10	681	WATER SPACER
8	PUMP SPACER	4/9/2022	05:01	9	5	20	805	MUD FLUSH
9	PUMP SPACER	4/9/2022	05:05	8.34	5	10	845	WATER SPACER
10	LEAD CEMENT	4/9/2022	05:08	12.7	7	50	1275	LEAD 407 SKS/145 BBLS AT 12.7 PPG, CALCULATED TOP OF LEAD 4,110'
11	LEAD CEMENT	4/9/2022	05:14	12.7	7	50	1169	100 BBLS LEAD CEMENT PUMPED
12	LEAD CEMENT	4/9/2022	05:20	12.7	6.7	45	725	145 BBLS LEAD CEMENT PUMPED
13	TAIL CEMENT	4/9/2022	05:31	14.2	5	50	557	TAIL 747 SKS/229 BBLS AT 14.2 PPG, CALCULATED TOP OF TAIL 6,760'
14	TAIL CEMENT	4/9/2022	05:40	14.2	5.7	50	505	100 BBLS TAIL CEMENT PUMPED
15	TAIL CEMENT	4/9/2022	05:50	14.2	4.8	50	563	150 BBLS TAIL CEMENT PUMPED
16	TAIL CEMENT	4/9/2022	06:01	14.2	4.8	79	543	229 BBLS TAIL CEMENT PUMPED
17	SHUTDOWN	4/9/2022	06:19					WASH LINES AND PUMP, DROP PLUG
18	DISPLACEMENT	4/9/2022	06:30	8.4	8	50	1305	DISPLACEMENT WATER + KCL
19	DISPLACEMENT	4/9/2022	06:36	8.4	8	50	2029	100 BBLS DISPLACEMENT PUMPED
20	DISPLACEMENT	4/9/2022	06:42	8.4	8	59	2863	159 BBLS DISPLACEMENT PUMPED
21	SLOW RATE	4/9/2022	06:50	8.4	3	10	2367	SLOW RATE
22	LAND PLUG	4/9/2022	06:52				3241	LAND PLUG, FULL RETURNS
23	CHECK FLOATS	4/9/2022	06:55					FLOATS HELD, 2 BBLS FLOW BACK
24	RIG DOWN	4/9/2022	07:05					RIG DOWN MEETING, RIG DOWN
25	LEAVE LOCATION	4/9/2022	08:00					CREW LEAVE LOCATION

Pump Diagrams

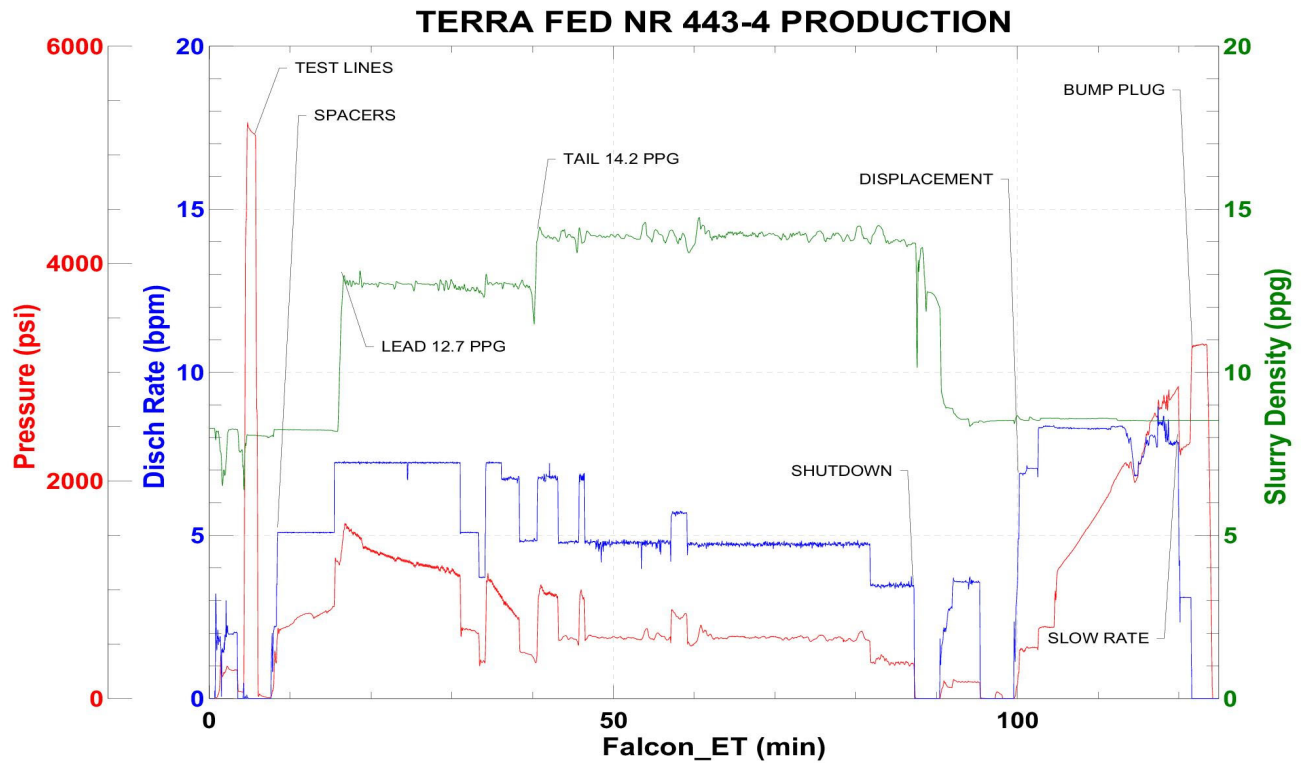


JobMaster Program Version 5.01C1

Job Number: 80893

Customer: TERRA

Well Name: FED NR 443-4



BJ Services

Job Start: Saturday, April 09, 2022