

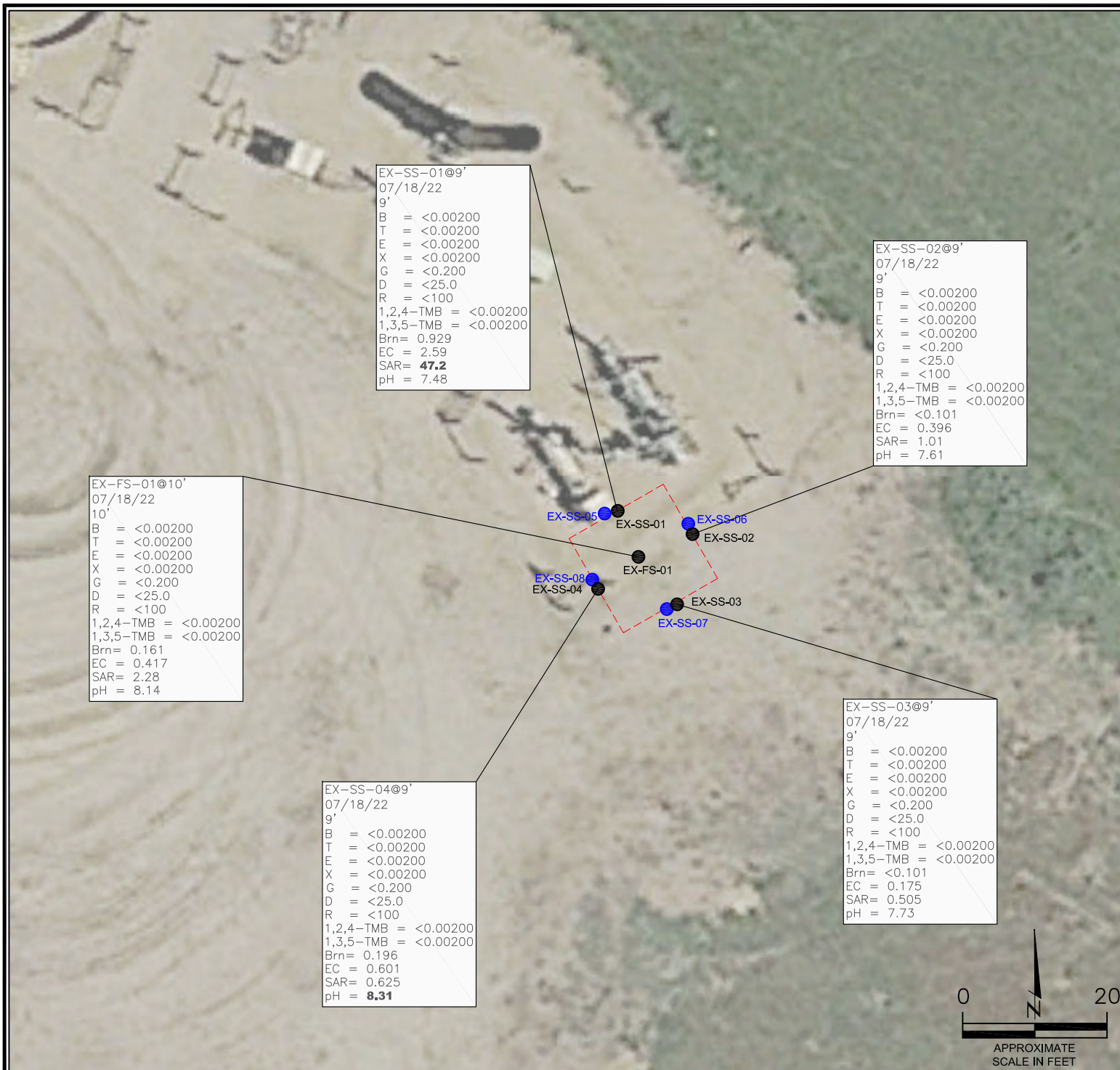


FIGURES

Figure 1: Soil Analytical Map

Figure 2: Polycyclic Aromatic Hydrocarbons Map

Figure 3: Metals in Soil Map



LEGEND

- INITIAL ASSESSMENT BOUNDARIES
- SS-02 APPROXIMATE LOCATION OF SOIL SAMPLES FIELD SCREENED, ONLY, WITH PHOTOIONIZATION DETECTOR
- SS-02 APPROXIMATE LOCATION OF SOIL SAMPLES SUBMITTED FOR LABORATORY ANALYSIS

PARAMETERS

SAMPLE LOCATION
DATE
DEPTH (FEET)
B = BENZENE (mg/kg)
T = TOLUENE (mg/kg)
E = ETHYLBENZENE (mg/kg)
X = TOTAL XYLENES (mg/kg)
G = TPH-GRO (mg/kg)
D = TPH-DRO (mg/kg)
R = TPH-RRO (mg/kg)
1,2,4-TMB = 1,2,4 TRIMETHYLBENZENE (mg/kg)
1,3,5-TMB = 1,3,5 TRIMETHYLBENZENE (mg/kg)
Brn= BORON (mg/L)
EC = SPECIFIC CONDUCTANCE (mmhos/cm)
SAR= SODIUM ADSORPTION RATIO
pH = pH (pH UNITS)

mg/kg = MILLIGRAMS PER KILOGRAM
mg/L = MILLIGRAMS PER LITER
mmhos/cm = MILLIMHOS PER CENTIMETER

TPH-GRO = TOTAL PETROLEUM HYDROCARBONS - GASOLINE RANGE ORGANICS
TPH-DRO = TOTAL PETROLEUM HYDROCARBONS - DIESEL RANGE ORGANICS
TPH-RRO = TOTAL PETROLEUM HYDROCARBONS - RESIDUAL RANGE ORGANICS

NOTES:
VALUES PRESENTED WITH A LESS THAN SYMBOL (<) DID NOT CONTAIN CONCENTRATIONS AT OR ABOVE LABORATORY DETECTION LIMITS

VALUES PRESENTED IN **BOLD** EXCEED COGCC TABLE 915-1 REGULATORY LIMITS.

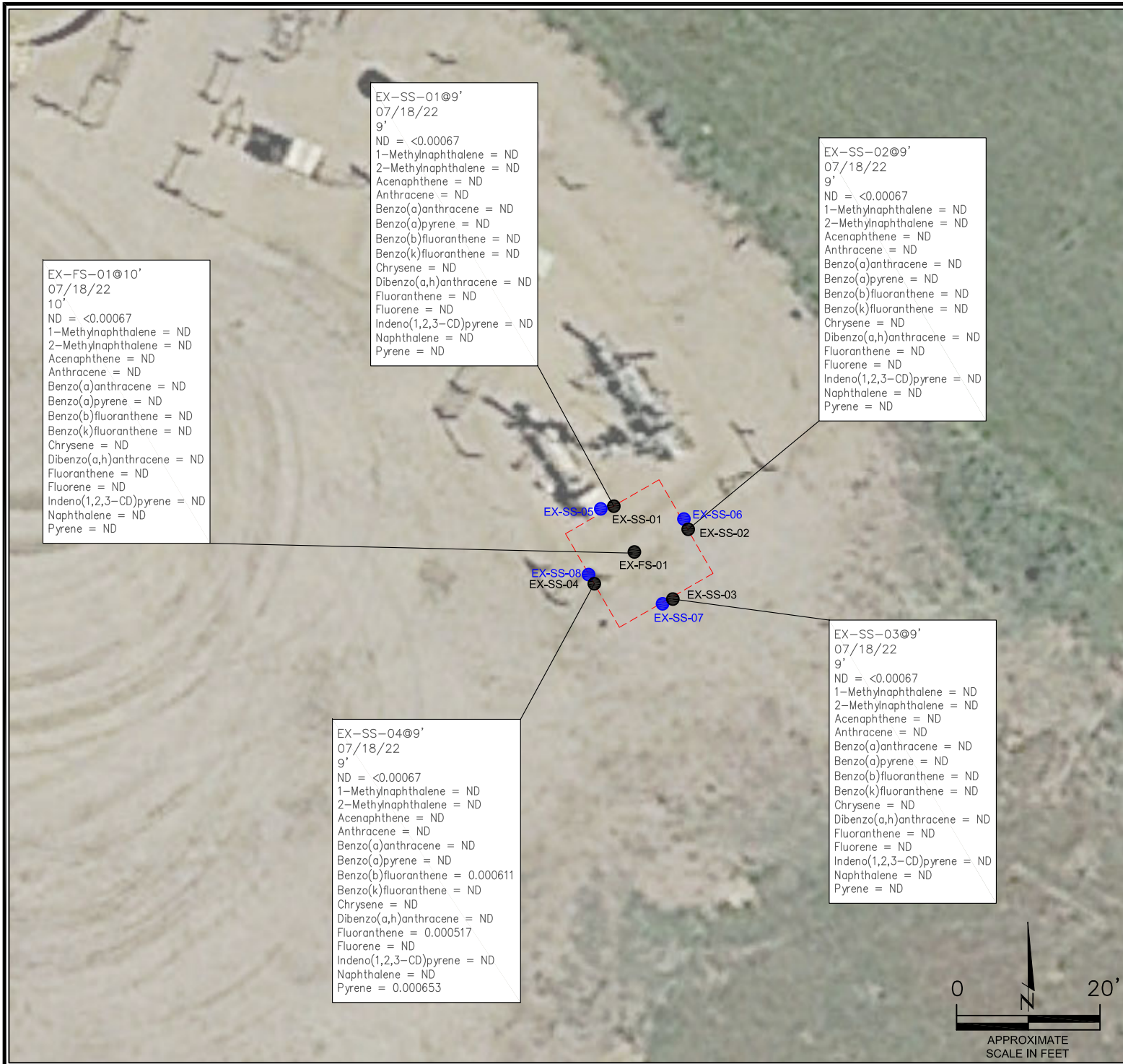
COGCC = COLORADO OIL AND GAS CONSERVATION COMMISSION

SOIL ANALYTICAL MAP
KIYOTA 63N67W 35NWSE
PRODUCED WATER RELEASE
40.180500 / -104.854244
NE¼ SE¼ SEC.35 T3N R67W 6PM
WELD COUNTY, COLORADO
LOCATION ID 336177
SPILL ID 482500

DATE:
08/31/22
DRAWN BY:
AMN
FIG.
NO. 1



EAGLE
ENVIRONMENTAL
CONSULTING, INC.
8000 W 44th Ave, Wheat Ridge, CO 80033
Ph: 303-433-0479 • F: 303-325-5449



LEGEND

- INITIAL ASSESSMENT BOUNDARIES
- SS-02 APPROXIMATE LOCATION OF SOIL SAMPLES FIELD SCREENED, ONLY, WITH PHOTOIONIZATION DETECTOR
- SS-02 APPROXIMATE LOCATION OF SOIL SAMPLES SUBMITTED FOR LABORATORY ANALYSIS

PARAMETERS

SAMPLE LOCATION
DATE SAMPLE COLLECTED
APPROXIMATE DEPTH
POLYCYCLIC AROMATIC HYDROCARBONS (PAHs) (mg/kg)

mg/kg = MILLIGRAMS PER KILOGRAM

ND = NON-DETECT

NOTES:
VALUES PRESENTED WITH A LESS THAN SYMBOL (<) DID NOT CONTAIN CONCENTRATIONS AT OR ABOVE LABORATORY DETECTION LIMITS

VALUES PRESENTED IN **BOLD** EXCEED COGCC TABLE 915-1 REGULATORY LIMITS.

COGCC = COLORADO OIL AND GAS CONSERVATION COMMISSION

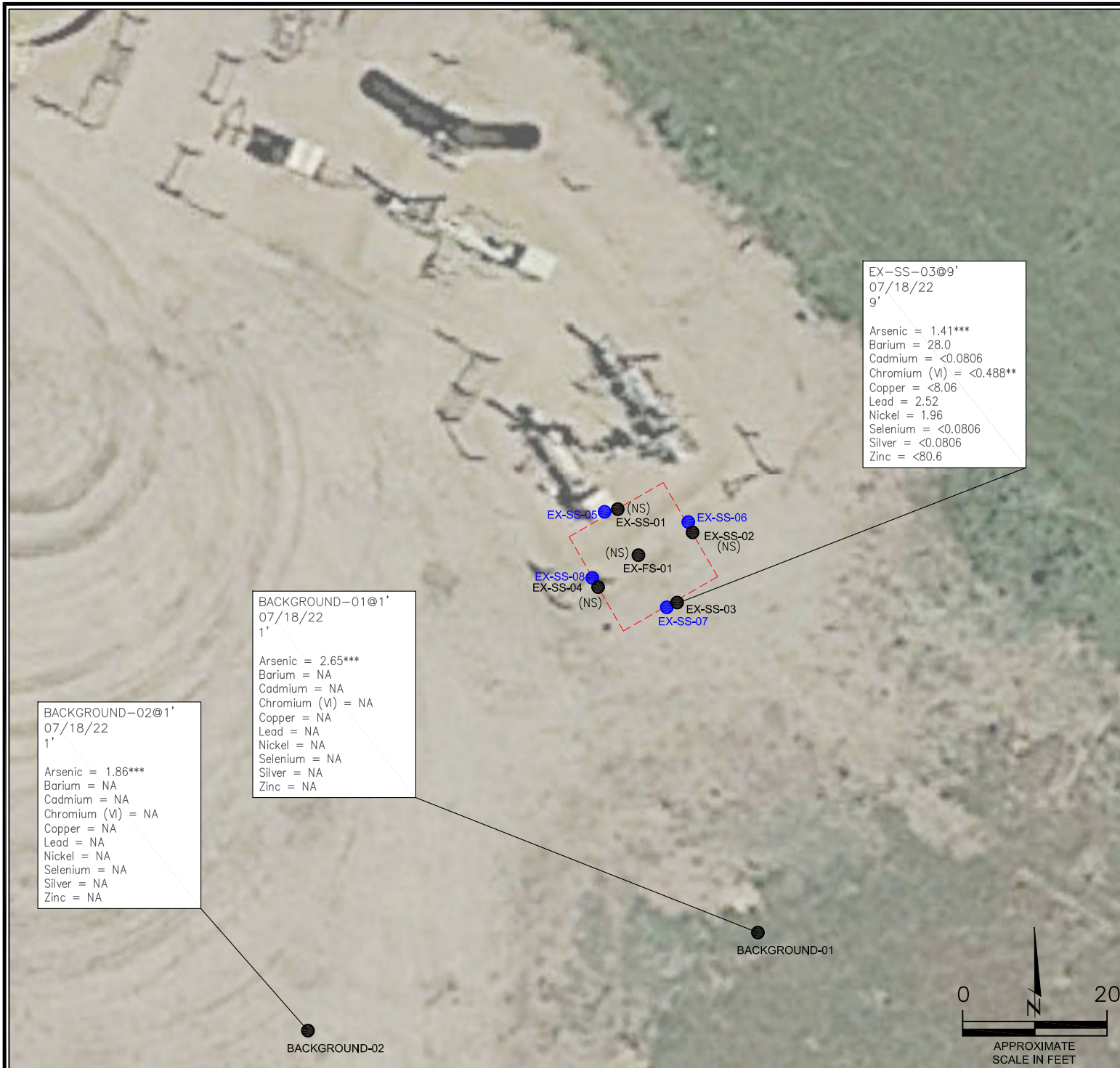
POLYCYCLIC AROMATIC HYDROCARBONS MAP

KIYOTA 63N67W 35NWSE
PRODUCED WATER RELEASE
40.180500 / -104.854244
NE¼ SE¼ SEC.35 T3N R67W 6PM
WELD COUNTY, COLORADO
LOCATION ID 336177
SPILL ID 482500

DATE:
08/31/22
DRAWN BY:
AMN
FIG.
NO. 2



EAGLE
ENVIRONMENTAL
CONSULTING, INC.
8000 W 44th Ave, Wheat Ridge, CO 80033
Ph: 303-433-0479 • F: 303-325-5449



LEGEND

- INITIAL ASSESSMENT BOUNDARIES
- SS-02 APPROXIMATE LOCATION OF SOIL SAMPLES FIELD SCREENED, ONLY, WITH PHOTOIONIZATION DETECTOR
- SS-02 APPROXIMATE LOCATION OF SOIL SAMPLES SUBMITTED FOR LABORATORY ANALYSIS

PARAMETERS

SAMPLE LOCATION
DATE SAMPLE COLLECTED
APPROXIMATE DEPTH
Arsenic = (mg/kg)
Barium = (mg/kg)
Cadmium = (mg/kg)
Chromium (VI) = (mg/kg)
Copper = (mg/kg)
Lead = (mg/kg)
Nickel = (mg/kg)
Selenium = (mg/kg)
Silver = (mg/kg)
Zinc = (mg/kg)

mg/kg = MILLIGRAMS PER KILOGRAM

(NS) - NOT SAMPLED

NA - NOT ANALYZED

NOTES:

VALUES PRESENTED WITH A LESS THAN SYMBOL (<) DID NOT CONTAIN CONCENTRATIONS AT/OR ABOVE LABORATORY REPORTING LIMITS AND/OR MINIMUM DETECTION LIMITS.

VALUES PRESENTED IN **BOLD** EXCEED COGCC TABLE 915-1 REGULATORY LIMITS

****ACHIEVABLE PRACTICAL QUANTITATIVE LIMITS FOR HEXAVALENT CHROMIUM (Cr VI) IN SOILS IS IN THE RANGE OF 0.1 TO 1 mg/kg.**

*****ARSENIC IS NATURALLY OCCURRING IN COLORADO. LOCAL CLEAN-UP LEVEL (2.83 mg/kg) IS 1.25*BACKGROUND AVERAGE (2.23 mg/kg).**

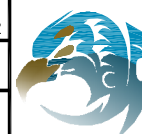
COGCC = COLORADO OIL AND GAS CONSERVATION COMMISSION

METALS IN SOIL MAP
KIYOTA 63N67W 35NWSE
PRODUCED WATER RELEASE
40.180500 / -104.854244
NE¼ SE¼ SEC.35 T3N R67W 6PM
WELD COUNTY, COLORADO
LOCATION ID 336177
SPILL ID 482500

DATE:
08/31/22

DRAWN BY:
AMN

FIG.
NO. 3



EAGLE
ENVIRONMENTAL
CONSULTING, INC.
8000 W 44th Ave, Wheat Ridge, CO 80033
Ph: 303-433-0479 • F: 303-325-5449



TABLES

Table 1: Photoionization Detector Reading Summary

Table 2: Soil Analytical Results Summary

Table 3: Polycyclic Aromatic Hydrocarbons Analytical Results Summary

Table 4: Metals Analytical Results Summary

TABLE 1
 PHOTOIONIZATION DETECTOR READING SUMMARY
 KIYOTA 63N67W 35NWSE
 PRODUCED WATER RELEASE
 40.180500 / -104.854244
 NE1/4 SE1/4 SEC.35 T3N R67W 6PM
 WELD COUNTY, COLORADO
 LOCATION ID 336177
 SPILL ID 482500

Sample Location (Latitude/Longitude)	Date	Approximate Depth (feet)	PID Reading (ppm-v)	Lab Submission (Y/N)
EX-SS-01 @ 9' (40.180413766 / -104.854213027)	07/18/22	9	1.8	Y
EX-SS-02 @ 9' (40.180415509 / -104.854160649)	07/18/22	9	2.1	Y
EX-SS-03 @ 9' (40.180398717 / -104.854168682)	07/18/22	9	2.3	Y
EX-SS-04 @ 9' (40.180407132 / -104.854211483)	07/18/22	9	1.5	Y
EX-SS-05 @ 5' (40.180413691 / -104.854214891)	07/18/22	5	0.9	N
EX-SS-06 @ 5' (40.180415510 / -104.854160652)	07/18/22	5	2.4	N
EX-SS-07 @ 5' (40.180398717 / -104.854168682)	07/18/22	5	1.3	N
EX-SS-08 @ 5' (40.180407132 / -104.854211483)	07/18/22	5	1.1	N
EX-FS-01 @ 10' (40.180416205 / -104.854190626)	07/18/22	10	1.0	Y
Background-01 @ 1' (40.180226798 / -104.854167578)	07/18/22	1	0.1	Y
Background-02 @ 1' (40.180156851 / -104.854360891)	07/18/22	1	1.3	Y
(Y/N) = Yes or No ppm-v = parts per million by volume PID = Photoionization Detector				

TABLE 2
SOIL ANALYTICAL RESULTS SUMMARY
KIYOTA 63N67W 35NWSE
PRODUCED WATER RELEASE
40.180500 / -104.854244
NE1/4 SE1/4 SEC.35 T3N R67W 6PM
WELD COUNTY, COLORADO
LOCATION ID 336177
SPILL ID 482500

Sample Location (Latitude/Longitude)	Date	Approximate Depth (feet)	PID Reading (ppm-v)	Benzene (mg/kg)	Toluene (mg/kg)	Ethylbenzene (mg/kg)	Total Xylenes (mg/kg)	TPH-GRO (mg/kg)	TPH-DRO (mg/kg)	TPH-RRO (mg/kg)	1,2,4-TMB (mg/kg)	1,3,5-TMB (mg/kg)	Boron (mg/L)	Specific Conductance (mmhos/cm)	pH (pH units)	SAR
COGCC Table 915-1 Residential Screening Levels (mg/kg)				1.20	490	5.8	58	500			30	27	2	<4	6-8.3	<6
COGCC Table 915-1 Protection of Groundwater Soil Screening Levels				0.0026	0.69	0.78	9.9	--			0.0081	0.0087	--	--	--	--
EX-SS-01 @ 9' (40.180413766 / -104.854213027)	07/18/22	9	1.8	<0.00200	<0.00200	<0.00200	<0.00200	<0.200	<25.0	<100	<0.00200	<0.00200	0.929	2.59	7.48	47.2
EX-SS-02 @ 9' (40.180415509 / -104.854160649)	07/18/22	9	2.1	<0.00200	<0.00200	<0.00200	<0.00200	<0.200	<25.0	<100	<0.00200	<0.00200	<0.101	0.396	7.61	1.01
EX-SS-03 @ 9' (40.180398717 / -104.854168682)	07/18/22	9	2.3	<0.00200	<0.00200	<0.00200	<0.00200	<0.200	<25.0	<100	<0.00200	<0.00200	<0.101	0.175	7.73	0.505
EX-SS-04 @ 9' (40.180407132 / -104.854211483)	07/18/22	9	1.5	<0.00200	<0.00200	<0.00200	<0.00200	<0.200	<25.0	<100	<0.00200	<0.00200	0.196	0.601	8.31	0.625
EX-FS-01 @ 10' (40.180416205 / -104.854190626)	07/18/22	10	1.0	<0.00200	<0.00200	<0.00200	<0.00200	<0.200	<25.0	<100	<0.00200	<0.00200	0.161	0.417	8.14	2.28
COGCC = Colorado Oil and Gas Conservation Commission mg/kg = milligrams per kilogram mmhos/cm = millimhos per centimeter PID = Photoionization Detector ppm-v = parts per million by volume mg/L = milligrams per liter SAR = Sodium Adsorption Ratio Note: Values presented with a less than symbol (<) did not contain concentrations at or above the laboratory MDL and/or reporting limit. Note: Values presented in BOLD contained concentrations exceeding COGCC Table 915-1 Regulatory Limits.																

TABLE 3
PAH ANALYTICAL RESULTS SUMMARY
KIYOTA 63N67W 35NWSE
PRODUCED WATER RELEASE
40.180500 / -104.854244
NE1/4 SE1/4 SEC.35 T3N R67W 6PM
WELD COUNTY, COLORADO
LOCATION ID 336177
SPILL ID 482500

Sample Location (Latitude/Longitude)	Date	Approximate Depth (feet)	PID Reading (ppm-v)	1-Methyl- naphthalene (mg/kg)	2-Methyl- naphthalene (mg/kg)	Acenaphthene (mg/kg)	Anthracene (mg/kg)	Benzo(a)-anthracene (mg/kg)	Benzo(a)- pyrene (mg/kg)	Benzo(b)- fluoranthene (mg/kg)	Benzo(k)- fluoranthene (mg/kg)	Chrysene (mg/kg)	Dibenzo(a,h)- anthracene (mg/kg)	Fluoranthene (mg/kg)	Fluorene (mg/kg)	Indeno(1,2,3- cd)-pyrene (mg/kg)	Naphthalene (mg/kg)	Pyrene (mg/kg)
COGCC Table 915-1 Residential Screening Levels				18	24	360	1,800	1.1	0.11	1.1	11	110	0.11	240	240	1.1	2	180
COGCC Table 915-1 Protection of Groundwater Soil Screening Levels				0.006	0.019	0.55	5.8	0.011	0.24	0.3	2.9	9	0.096	8.9	0.54	0.98	0.0038	1.3
EX-SS-01 @ 9' (40.180413766 / -104.854213027)	07/18/22	9	1.8	<0.00067	<0.00067	<0.00067	<0.00067	<0.00067	<0.00067	<0.00067	<0.00067	<0.00067	<0.00067	<0.00067	<0.00067	<0.00067	<0.00067	<0.00067
EX-SS-02 @ 9' (40.180415509 / -104.854160649)	07/18/22	9	2.1	<0.00067	<0.00067	<0.00067	<0.00067	<0.00067	<0.00067	<0.00067	<0.00067	<0.00067	<0.00067	<0.00067	<0.00067	<0.00067	<0.00067	<0.00067
EX-SS-03 @ 9' (40.180398717 / -104.854168682)	07/18/22	9	2.3	<0.00067	<0.00067	<0.00067	<0.00067	<0.00067	<0.00067	<0.00067	<0.00067	<0.00067	<0.00067	<0.00067	<0.00067	<0.00067	<0.00067	<0.00067
EX-SS-04 @ 9' (40.180407132 / -104.854211483)	07/18/22	9	1.5	<0.00067	<0.00067	<0.00067	<0.00067	<0.00067	<0.00067	0.000611	<0.00067	<0.00067	<0.00067	0.000517	<0.00067	<0.00067	<0.00067	0.000653
EX-FS-01 @ 10' (40.180416205 / -104.854190626)	07/18/22	10	1.0	<0.00067	<0.00067	<0.00067	<0.00067	<0.00067	<0.00067	<0.00067	<0.00067	<0.00067	<0.00067	<0.00067	<0.00067	<0.00067	<0.00067	<0.00067
COGCC = Colorado Oil and Gas Conservation Commission PID = Photoionization Detector PAH = Polycyclic Aromatic Hydrocarbons mg/kg = milligrams per kilogram ppm-v = parts per million by volume MDL - Minimum Detection Limit Note: Values presented with a less than symbol (<) did not contain concentrations at or above the laboratory MDL and/or reporting limit. Note: Values presented in BOLD contained concentrations exceeding COGCC Table 915-1 Regulatory Limits																		

TABLE 4
METALS ANALYTICAL RESULTS SUMMARY
KIYOTA 63N67W 35NWSE
PRODUCED WATER RELEASE
40.180500 / -104.854244
NE1/4 SE1/4 SEC.35 T3N R67W 6PM
WELD COUNTY, COLORADO
LOCATION ID 336177
SPILL ID 482500

Sample Location (Latitude/Longitude)	Date	Approximate Depth (feet)	Arsenic (mg/kg)	Barium (mg/kg)	Cadmium (mg/kg)	Hexavalent Chromium (mg/kg)	Copper (mg/kg)	Lead (mg/kg)	Nickel (mg/kg)	Selenium (mg/kg)	Silver (mg/kg)	Zinc (mg/kg)
COGCC Table 915-1 Residential Screening Levels			0.68***	15,000	71	0.3**	3,100	400	1,500	390	390	23,000
COGCC Table 915-1 Protection of Groundwater Soil Screening Levels			0.29	82	0.38	0.00067**	46	14	26	0.26	0.8	370
Local Cleanup Levels			2.83***	--	--	--	--	--	--	--	--	--
EX-SS-03 @ 9" (40.180398717 / -104.854168682)	07/18/22	9	1.41***	28.0	<0.0806	<0.488**	<8.06	2.52	1.96	<0.0806	<0.0806	<80.6
Background-01 @ 1" (40.180226798 / -104.854167578)	07/18/22	1	2.65***	NA	NA	NA	NA	NA	NA	NA	NA	NA
Background-02 @ 1" (40.180156851 / -104.854360891)	07/18/22	1	1.86***	NA	NA	NA	NA	NA	NA	NA	NA	NA
COGCC = Colorado Oil and Gas Conservation Commission mg/kg = milligrams per kilogram NA = Not Analyzed Notes: Values presented with a less than symbol (<) did not contain concentrations at or above the laboratory reporting limit or minimum detection levels. Values presented in BOLD contained concentrations exceeding applicable COGCC Table 915-1 Regulatory Limits Values presented in BOLD+* contained concentrations exceeding COGCC Table 915-1 Protection of Groundwater Soil Screening Levels **Achievable practical quantitative limits for Hexavalent Chromium in soils is in the range of 0.1 to 1 mg/kg. ***Arsenic is naturally occurring in Colorado. Local clean-up level (2.83 mg/kg) is 1.25*Average Background (2.26 mg/kg).												



ATTACHMENT A

Photolog

Kiyota 63N67W 35NWSE

Location ID 336177

Spill ID 482500

Produced Water Release

July 2022



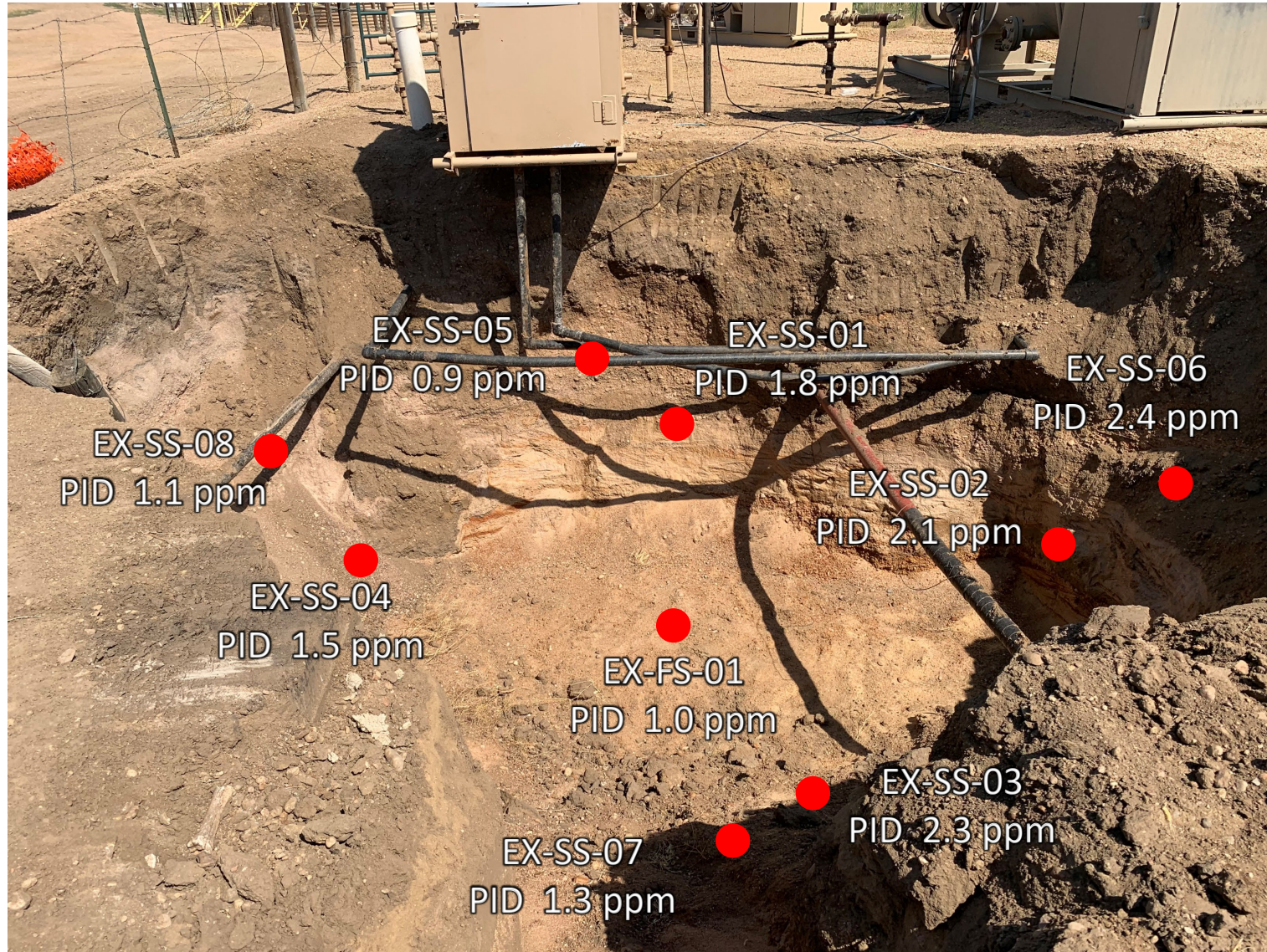
EAGLE
ENVIRONMENTAL
CONSULTING, INC.

8000 W 44th Ave, Wheat Ridge, CO 80033
Ph: 303-433-0479 • F: 303-325-5449



CRESTONE PEAK
RESOURCES

Release Assessment – 07/18/22



Looking northeast

No petroleum hydrocarbon staining or odor observed



ATTACHMENT B

Laboratory Analytical Reports



July 28, 2022

Eagle Environmental Consulting, Inc.

Martin C Eckert III

8000 W 44th Ave

Wheat Ridge CO 80033

Project Name - Bonanza - Kiyota 63N67W 35NWSE Project Number - -

Attached are your analytical results for Bonanza - Kiyota 63N67W 35NWSE received by Origins Laboratory, Inc. July 18, 2022. This project is associated with Origins project number Y207355-01.

The analytical results in the following report were analyzed under the guidelines of EPA Methods. These methods are identified as follows; "SW" are defined in SW-846, "EPA" are defined in 40CFR part 136 and "SM" are defined in the most current revision of Standard Methods For the Examination of Water and Wastewater.

The analytical results apply specifically to the samples and analyses specified per the attached Chain of Custody. As such, this report shall not be reproduced except in full, without the written approval of Origin's laboratory.

Unless otherwise noted, the analytical results for all soil samples are reported on a wet weight basis. All analytical analyses were performed under NELAP guidelines unless noted by a data qualifier.

Any holding time exceedances, deviations from the method specifications or deviations from Origins Laboratory's Standard Operating Procedures are outlined in the case narrative.

Thank you for selecting Origins for your analytical needs. Please contact us with any questions concerning this report, or if we can help with anything at all.

Origins Laboratory, Inc.
303.433.1322
o-squad@oelabinc.com



1725 Elk Place, Denver, CO 80211 | Phone: 303.433.1322 | Fax: 303.265.9645

Eagle Environmental Consulting, Inc.
8000 W 44th Ave
Wheat Ridge CO 80033

Martin C Eckert III
Project Number: -
Project: Bonanza - Kiyota 63N67W 35NWSE

CROSS REFERENCE REPORT

Sample ID	Laboratory ID	Matrix	Date Sampled	Date Received
EX-SS-01@9'	Y207355-01	Soil	July 18, 2022 10:15	07/18/2022 12:58
EX-SS-02@9'	Y207355-02	Soil	July 18, 2022 10:17	07/18/2022 12:58
EX-SS-03@9'	Y207355-03	Soil	July 18, 2022 10:19	07/18/2022 12:58
EX-SS-04@9'	Y207355-04	Soil	July 18, 2022 10:21	07/18/2022 12:58
EX-FS-01@10'	Y207355-05	Soil	July 18, 2022 10:23	07/18/2022 12:58

Origins Laboratory, Inc.



The results in this report apply to the samples analyzed in accordance with the chain of custody document. This analytical report must be reproduced in its entirety.

Eagle Environmental Consulting, Inc.
8000 W 44th Ave
Wheat Ridge CO 80033

Martin C Eckert III
Project Number: -
Project: Bonanza - Kiyota 63N67W 35NWSE

Origins Laboratory

Origins Work Order: Y207355

Checklist Completed by: Domeno Emi

Date/time completed: 7/18/2022 13:27

Matrix(s) Received: (Check all that apply): ☒ Soil/Solid ☐ Water ☐ Other: _____

Cooler Number/Temperature: 1 / 4.6 °C ☐ °C ☐ °C (Describe) _____

Thermometer ID: T004

Sample Receipt Checklist

F-012207-01-R1
Effective Date: 01/09/12

Client: EAGLE ENVIRONMENTAL CONSULTING

Client Project ID: BONANZA KIYOTA 63N67W 35NWSE

Shipped Via: HD
(UPS, FedEx, Hand Delivered, Pick-up, etc.)

Airbill #: NA

Requirement Description	Yes	No	N/A	Comments (if any)
If samples require cooling, was the temperature between 0°C to ≤ 6°C ⁽¹⁾ ?	<input checked="" type="checkbox"/>			
Is there ice present (document if blue ice is used)	<input checked="" type="checkbox"/>			
Are custody seals present on cooler? (if so, document in comments if they are signed and dated, broken or intact)		<input checked="" type="checkbox"/>		
Are custody seals present on each sample container? (if so, document in comments if they are signed and dated, broken or intact)		<input checked="" type="checkbox"/>		
Were all samples received intact ⁽¹⁾ ?	<input checked="" type="checkbox"/>			
Was adequate sample volume provided ⁽¹⁾ ?	<input checked="" type="checkbox"/>			
Are short holding time analytes or samples with HTs due within 48 hours present ⁽¹⁾ ?		<input checked="" type="checkbox"/>		
Is a chain-of-custody (COC) present and filled out completely ⁽¹⁾ ?	<input checked="" type="checkbox"/>			
Does the COC agree with the number and type of sample bottles received ⁽¹⁾ ?	<input checked="" type="checkbox"/>			
Do the sample IDs on the bottle labels match the COC ⁽¹⁾ ?	<input checked="" type="checkbox"/>			
Is the COC properly relinquished by the client with date and time recorded ⁽¹⁾ ?	<input checked="" type="checkbox"/>			
For volatiles in water – is there headspace (> ¼ inch bubble) present? If yes, contact client and note in narrative.			<input checked="" type="checkbox"/>	
Are samples preserved that require preservation and was it checked ⁽¹⁾ ? (note ID of confirmation instrument used in comments) / (preservation is not confirmed for subcontrasted analyses in order to insure sample integrity) pH < 2 for samples preserved with HNO ₃ , HCL, H ₂ SO ₄ / (pH > 10 for samples preserved with NaAsO ₂ +NaOH, ZnAc+NaOH)			<input checked="" type="checkbox"/>	
Additional Comments (if any):				

⁽¹⁾ If NO, then contact the client before proceeding with analysis and note date/time and person contacted as well as the corrective action to in the additional comments (above) and the case narrative.

Reviewed by: JB (Project Manager)

Date/Time Reviewed: 7-19-22

Origins Laboratory, Inc.

J. Bynon

The results in this report apply to the samples analyzed in accordance with the chain of custody document. This analytical report must be reproduced in its entirety.

Eagle Environmental Consulting, Inc.
8000 W 44th Ave
Wheat Ridge CO 80033

Martin C Eckert III
Project Number: -
Project: Bonanza - Kiyota 63N67W 35NWSE

EX-SS-01@9'

7/18/2022 10:15:00AM

Analyte	Result	Min Detection Limit	Reporting Limit	Units	Dilution	Batch	Prepared	Analyzed	Notes
---------	--------	---------------------	-----------------	-------	----------	-------	----------	----------	-------

Origins Laboratory, Inc.
Y207355-01 (Soil)

Boron (DTPA Sorbitol)

Boron	0.929	0.0992	mg/L	1	B2G1909	07/19/2022	07/20/2022	
-------	-------	--------	------	---	---------	------------	------------	--

DRO/ORO by EPA 8015D

Diesel (C10-C28)	ND	25.0	mg/kg	1	B2G2012	07/20/2022	07/25/2022	U
Residual Range Organics (C28-C40)	ND	100	"	"	"	"	"	U

Surrogate: o-Terphenyl	104 %	50-150			"	"	"
------------------------	-------	--------	--	--	---	---	---

GBTEX+TMBs by 8260D

1,2,4-Trimethylbenzene	ND	0.00200	mg/kg	1	B2G1902	07/19/2022	07/19/2022	U
1,3,5-Trimethylbenzene	ND	0.00200	"	"	"	"	"	U
Benzene	ND	0.00200	"	"	"	"	"	U
Ethylbenzene	ND	0.00200	"	"	"	"	"	U
Toluene	ND	0.00200	"	"	"	"	"	U
Xylenes, total	ND	0.00200	"	"	"	"	"	U
Gasoline Range Hydrocarbons	ND	0.200	"	"	"	"	"	U

Surrogate: 1,2-Dichloroethane-d4	114 %	70-130			"	"	"
----------------------------------	-------	--------	--	--	---	---	---

Origins Laboratory, Inc.



The results in this report apply to the samples analyzed in accordance with the chain of custody document. This analytical report must be reproduced in its entirety.

Eagle Environmental Consulting, Inc.
8000 W 44th Ave
Wheat Ridge CO 80033

Martin C Eckert III
Project Number: -
Project: Bonanza - Kiyota 63N67W 35NWSE

EX-SS-01@9'

7/18/2022 10:15:00AM

Analyte	Result	Min Detection Limit	Reporting Limit	Units	Dilution	Batch	Prepared	Analyzed	Notes
---------	--------	---------------------	-----------------	-------	----------	-------	----------	----------	-------

Origins Laboratory, Inc.
Y207355-01 (Soil)

GBTEX+TMBs by 8260D

Surrogate: Toluene-d8	97.8 %	70-130	B2G19 02	07/19/2022	07/19/2022
Surrogate: 4-Bromofluorobenzene	98.1 %	70-130	"	"	"

Metals by Saturated Paste by EPA 6010

Calcium	ND	0.499	meq/L	10	[CALC]	07/19/2022	07/20/2022
Magnesium	ND	0.823	"	"	"	"	"
Sodium	21.3	0.435	"	"	"	"	"

PAH by 8270D SIM

1-Methylnaphthalene	ND	0.000364	0.00067	mg/Kg	1	L627973	07/21/2022	07/22/2022
2-Methylnaphthalene	ND	0.000645	0.00067	"	"	"	"	"
Acenaphthene	ND	0.000304	0.00067	"	"	"	"	"
Anthracene	ND	0.000334	0.00067	"	"	"	"	"
Benzo(a)anthracene	ND	0.000493	0.00067	"	"	"	"	"
Benzo(a)pyrene	ND	0.000468	0.00067	"	"	"	"	"
Benzo(b)fluoranthene	ND	0.000585	0.00067	"	"	"	"	"
Benzo(k)fluoranthene	ND	0.000437	0.00067	"	"	"	"	"
Chrysene	ND	0.000624	0.00067	"	"	"	"	"
Dibenz(a,h)anthracene	ND	0.000614	0.00067	"	"	"	"	"
Fluoranthene	ND	0.000394	0.00067	"	"	"	"	"

Origins Laboratory, Inc.



The results in this report apply to the samples analyzed in accordance with the chain of custody document. This analytical report must be reproduced in its entirety.

Eagle Environmental Consulting, Inc.
8000 W 44th Ave
Wheat Ridge CO 80033

Martin C Eckert III
Project Number: -
Project: Bonanza - Kiyota 63N67W 35NWSE

EX-SS-01@9'

7/18/2022 10:15:00AM

Analyte	Result	Min Detection Limit	Reporting Limit	Units	Dilution	Batch	Prepared	Analyzed	Notes
---------	--------	---------------------	-----------------	-------	----------	-------	----------	----------	-------

Waypoint Analytical, Inc.
Y207355-01 (Soil)

PAH by 8270D SIM

Fluorene	ND	0.000286	0.00067	mg/Kg	1	L627973	07/21/2022	07/22/2022
Indeno(1,2,3-cd)pyrene	ND	0.000627	0.00067	"	"	"	"	"
Naphthalene	ND	0.000484	0.00067	"	"	"	"	"
Pyrene	ND	0.000643	0.00067	"	"	"	"	"

Surrogate: 2-Fluorobiphenyl	66 %	33-115	"	"	"
Surrogate: 4-Terphenyl-d14	75.2 %	33-122	"	"	"
Surrogate: Nitrobenzene-d5	65 %	29-110	"	"	"

pH in Soil by 9045D

pH	7.48	pH Units	1	B2G1912	07/19/2022	07/20/2022
----	------	----------	---	---------	------------	------------

SAR by 20B Saturated Paste

SAR	47.2	SAR	1	B2G1906	07/19/2022	07/20/2022
-----	------	-----	---	---------	------------	------------

Specific Conductance Mod. 9050A

Specific Conductance (EC)	2.59	0.00500	mmhos/cm	1	B2G1912	07/19/2022	07/20/2022
---------------------------	------	---------	----------	---	---------	------------	------------

Origins Laboratory, Inc.



The results in this report apply to the samples analyzed in accordance with the chain of custody document. This analytical report must be reproduced in its entirety.

Eagle Environmental Consulting, Inc.
8000 W 44th Ave
Wheat Ridge CO 80033

Martin C Eckert III
Project Number: -
Project: Bonanza - Kiyota 63N67W 35NWSE

EX-SS-02@9'

7/18/2022 10:17:00AM

Analyte	Result	Min Detection Limit	Reporting Limit	Units	Dilution	Batch	Prepared	Analyzed	Notes
---------	--------	---------------------	-----------------	-------	----------	-------	----------	----------	-------

Origins Laboratory, Inc.
Y207355-02 (Soil)

Boron (DTPA Sorbitol)

Boron	ND	0.101	mg/L	1	B2G1909	07/19/2022	07/20/2022	
-------	----	-------	------	---	---------	------------	------------	--

DRO/ORO by EPA 8015D

Diesel (C10-C28)	ND	25.0	mg/kg	1	B2G2012	07/20/2022	07/25/2022	U
Residual Range Organics (C28-C40)	ND	100	"	"	"	"	"	U

Surrogate: o-Terphenyl	114 %	50-150		"	"	"
------------------------	-------	--------	--	---	---	---

GBTEX+TMBs by 8260D

1,2,4-Trimethylbenzene	ND	0.00200	mg/kg	1	B2G1902	07/19/2022	07/19/2022	U
1,3,5-Trimethylbenzene	ND	0.00200	"	"	"	"	"	U
Benzene	ND	0.00200	"	"	"	"	"	U
Ethylbenzene	ND	0.00200	"	"	"	"	"	U
Toluene	ND	0.00200	"	"	"	"	"	U
Xylenes, total	ND	0.00200	"	"	"	"	"	U
Gasoline Range Hydrocarbons	ND	0.200	"	"	"	"	"	U

Surrogate: 1,2-Dichloroethane-d4	114 %	70-130		"	"	"
----------------------------------	-------	--------	--	---	---	---

Origins Laboratory, Inc.



The results in this report apply to the samples analyzed in accordance with the chain of custody document. This analytical report must be reproduced in its entirety.

Eagle Environmental Consulting, Inc.
8000 W 44th Ave
Wheat Ridge CO 80033

Martin C Eckert III
Project Number: -
Project: Bonanza - Kiyota 63N67W 35NWSE

EX-SS-02@9'

7/18/2022 10:17:00AM

Analyte	Result	Min Detection Limit	Reporting Limit	Units	Dilution	Batch	Prepared	Analyzed	Notes
---------	--------	---------------------	-----------------	-------	----------	-------	----------	----------	-------

Origins Laboratory, Inc.
Y207355-02 (Soil)

GBTEX+TMBs by 8260D

Surrogate: Toluene-d8	97.6 %	70-130	B2G19 02	07/19/2022	07/19/2022
Surrogate: 4-Bromofluorobenzene	98.8 %	70-130	"	"	"

Metals by Saturated Paste by EPA 6010

Calcium	1.32	0.499	meq/L	10	[CALC]	07/19/2022	07/20/2022
Magnesium	ND	0.823	"	"	"	"	"
Sodium	0.968	0.435	"	"	"	"	"

PAH by 8270D SIM

1-Methylnaphthalene	ND	0.000364	0.00067	mg/Kg	1	L627973	07/21/2022	07/22/2022
2-Methylnaphthalene	ND	0.000645	0.00067	"	"	"	"	"
Acenaphthene	ND	0.000304	0.00067	"	"	"	"	"
Anthracene	ND	0.000334	0.00067	"	"	"	"	"
Benzo(a)anthracene	ND	0.000493	0.00067	"	"	"	"	"
Benzo(a)pyrene	ND	0.000468	0.00067	"	"	"	"	"
Benzo(b)fluoranthene	ND	0.000585	0.00067	"	"	"	"	"
Benzo(k)fluoranthene	ND	0.000437	0.00067	"	"	"	"	"
Chrysene	ND	0.000624	0.00067	"	"	"	"	"
Dibenz(a,h)anthracene	ND	0.000614	0.00067	"	"	"	"	"
Fluoranthene	ND	0.000394	0.00067	"	"	"	"	"

Origins Laboratory, Inc.



The results in this report apply to the samples analyzed in accordance with the chain of custody document. This analytical report must be reproduced in its entirety.

Eagle Environmental Consulting, Inc.
8000 W 44th Ave
Wheat Ridge CO 80033

Martin C Eckert III
Project Number: -
Project: Bonanza - Kiyota 63N67W 35NWSE

EX-SS-02@9'

7/18/2022 10:17:00AM

Analyte	Result	Min Detection Limit	Reporting Limit	Units	Dilution	Batch	Prepared	Analyzed	Notes
---------	--------	---------------------	-----------------	-------	----------	-------	----------	----------	-------

Waypoint Analytical, Inc.
Y207355-02 (Soil)

PAH by 8270D SIM

Fluorene	ND	0.000286	0.00067	mg/Kg	1	L627973	07/21/2022	07/22/2022
Indeno(1,2,3-cd)pyrene	ND	0.000627	0.00067	"	"	"	"	"
Naphthalene	ND	0.000484	0.00067	"	"	"	"	"
Pyrene	ND	0.000643	0.00067	"	"	"	"	"

Surrogate: 2-Fluorobiphenyl	60.7 %	33-115	"	"	"
Surrogate: 4-Terphenyl-d14	75.4 %	33-122	"	"	"
Surrogate: Nitrobenzene-d5	59.2 %	29-110	"	"	"

pH in Soil by 9045D

pH	7.61	pH Units	1	B2G1912	07/19/2022	07/20/2022
----	------	----------	---	---------	------------	------------

SAR by 20B Saturated Paste

SAR	1.01	SAR	1	B2G1906	07/19/2022	07/20/2022
-----	------	-----	---	---------	------------	------------

Specific Conductance Mod. 9050A

Specific Conductance (EC)	0.396	0.00500	mmhos/cm	1	B2G1912	07/19/2022	07/20/2022
---------------------------	-------	---------	----------	---	---------	------------	------------

Origins Laboratory, Inc.



The results in this report apply to the samples analyzed in accordance with the chain of custody document. This analytical report must be reproduced in its entirety.

Eagle Environmental Consulting, Inc.
8000 W 44th Ave
Wheat Ridge CO 80033

Martin C Eckert III
Project Number: -
Project: Bonanza - Kiyota 63N67W 35NWSE

EX-SS-03@9'

7/18/2022 10:19:00AM

Analyte	Result	Min Detection Limit	Reporting Limit	Units	Dilution	Batch	Prepared	Analyzed	Notes
---------	--------	---------------------	-----------------	-------	----------	-------	----------	----------	-------

Origins Laboratory, Inc.
Y207355-03 (Soil)

Boron (DTPA Sorbitol)

Boron	ND	0.101	mg/L	1	B2G1909	07/19/2022	07/20/2022	
-------	----	-------	------	---	---------	------------	------------	--

DRO/ORO by EPA 8015D

Diesel (C10-C28)	ND	25.0	mg/kg	1	B2G2012	07/20/2022	07/25/2022	U
Residual Range Organics (C28-C40)	ND	100	"	"	"	"	"	U

Surrogate: o-Terphenyl	109 %	50-150			"	"	"	
------------------------	-------	--------	--	--	---	---	---	--

GBTEX+TMBs by 8260D

1,2,4-Trimethylbenzene	ND	0.00200	mg/kg	1	B2G1902	07/19/2022	07/19/2022	U
1,3,5-Trimethylbenzene	ND	0.00200	"	"	"	"	"	U
Benzene	ND	0.00200	"	"	"	"	"	U
Ethylbenzene	ND	0.00200	"	"	"	"	"	U
Toluene	ND	0.00200	"	"	"	"	"	U
Xylenes, total	ND	0.00200	"	"	"	"	"	U
Gasoline Range Hydrocarbons	ND	0.200	"	"	"	"	"	U

Surrogate: 1,2-Dichloroethane-d4	118 %	70-130			"	"	"	
----------------------------------	-------	--------	--	--	---	---	---	--

Origins Laboratory, Inc.



The results in this report apply to the samples analyzed in accordance with the chain of custody document. This analytical report must be reproduced in its entirety.

Eagle Environmental Consulting, Inc.
8000 W 44th Ave
Wheat Ridge CO 80033

Martin C Eckert III
Project Number: -
Project: Bonanza - Kiyota 63N67W 35NWSE

EX-SS-03@9'

7/18/2022 10:19:00AM

Analyte	Result	Min Detection Limit	Reporting Limit	Units	Dilution	Batch	Prepared	Analyzed	Notes
---------	--------	---------------------	-----------------	-------	----------	-------	----------	----------	-------

Origins Laboratory, Inc.
Y207355-03 (Soil)

GBTEX+TMBs by 8260D

Surrogate: Toluene-d8	98.3 %	70-130	B2G19 02	07/19/2022	07/19/2022
Surrogate: 4-Bromofluorobenzene	97.1 %	70-130	"	"	"

Metals by Saturated Paste by EPA 6010

Calcium	0.692	0.499	meq/L	10	[CALC]	07/19/2022	07/20/2022
Magnesium	ND	0.823	"	"	"	"	"
Sodium	ND	0.435	"	"	"	"	"

PAH by 8270D SIM

1-Methylnaphthalene	ND	0.000364	0.00067	mg/Kg	1	L627973	07/21/2022	07/22/2022
2-Methylnaphthalene	ND	0.000645	0.00067	"	"	"	"	"
Acenaphthene	ND	0.000304	0.00067	"	"	"	"	"
Anthracene	ND	0.000334	0.00067	"	"	"	"	"
Benzo(a)anthracene	ND	0.000493	0.00067	"	"	"	"	"
Benzo(a)pyrene	ND	0.000468	0.00067	"	"	"	"	"
Benzo(b)fluoranthene	ND	0.000585	0.00067	"	"	"	"	"
Benzo(k)fluoranthene	ND	0.000437	0.00067	"	"	"	"	"
Chrysene	ND	0.000624	0.00067	"	"	"	"	"
Dibenz(a,h)anthracene	ND	0.000614	0.00067	"	"	"	"	"
Fluoranthene	ND	0.000394	0.00067	"	"	"	"	"

Origins Laboratory, Inc.



The results in this report apply to the samples analyzed in accordance with the chain of custody document. This analytical report must be reproduced in its entirety.

Eagle Environmental Consulting, Inc.
8000 W 44th Ave
Wheat Ridge CO 80033

Martin C Eckert III
Project Number: -
Project: Bonanza - Kiyota 63N67W 35NWSE

EX-SS-03@9'

7/18/2022 10:19:00AM

Analyte	Result	Min Detection Limit	Reporting Limit	Units	Dilution	Batch	Prepared	Analyzed	Notes
---------	--------	---------------------	-----------------	-------	----------	-------	----------	----------	-------

Waypoint Analytical, Inc.
Y207355-03 (Soil)

PAH by 8270D SIM

Fluorene	ND	0.000286	0.00067	mg/Kg	1	L627973	07/21/2022	07/22/2022
Indeno(1,2,3-cd)pyrene	ND	0.000627	0.00067	"	"	"	"	"
Naphthalene	ND	0.000484	0.00067	"	"	"	"	"
Pyrene	ND	0.000643	0.00067	"	"	"	"	"

Surrogate: 2-Fluorobiphenyl	55.6 %	33-115	"	"	"
Surrogate: 4-Terphenyl-d14	69 %	33-122	"	"	"
Surrogate: Nitrobenzene-d5	58.1 %	29-110	"	"	"

pH in Soil by 9045D

pH	7.73	pH Units	1	B2G1912	07/19/2022	07/20/2022
----	------	----------	---	---------	------------	------------

SAR by 20B Saturated Paste

SAR	0.505	SAR	1	B2G1906	07/19/2022	07/20/2022
-----	-------	-----	---	---------	------------	------------

Specific Conductance Mod. 9050A

Specific Conductance (EC)	0.175	0.00500	mmhos/cm	1	B2G1912	07/19/2022	07/20/2022
---------------------------	-------	---------	----------	---	---------	------------	------------

Table 915 metals by EPA 6020B

Arsenic	1.41	0.0806	mg/kg	5	B2G2116	07/21/2022	07/27/2022
---------	------	--------	-------	---	---------	------------	------------

Origins Laboratory, Inc.



The results in this report apply to the samples analyzed in accordance with the chain of custody document. This analytical report must be reproduced in its entirety.

Eagle Environmental Consulting, Inc.
8000 W 44th Ave
Wheat Ridge CO 80033

Martin C Eckert III
Project Number: -
Project: Bonanza - Kiyota 63N67W 35NWSE

EX-SS-03@9'

7/18/2022 10:19:00AM

Analyte	Result	Min Detection Limit	Reporting Limit	Units	Dilution	Batch	Prepared	Analyzed	Notes
---------	--------	---------------------	-----------------	-------	----------	-------	----------	----------	-------

Origins Laboratory, Inc.
Y207355-03 (Soil)

Table 915 metals by EPA 6020B

Barium	28.0	8.06	mg/kg	5	B2G2116	07/21/2022	07/27/2022	
Cadmium	ND	0.0806	"	"	"	"	"	U
Copper	ND	8.06	"	"	"	"	"	U
Lead	2.52	0.806	"	"	"	"	"	
Nickel	1.96	0.806	"	"	"	"	"	
Selenium	ND	0.0806	"	"	"	"	"	U
Silver	ND	0.0806	"	"	"	"	"	U
Zinc	ND	80.6	"	"	"	"	"	U

Total Metals by 7196A

Chromium, Hexavalent	ND	0.488	1	mg/Kg	2	L627623	07/15/2022	07/20/2022
----------------------	----	-------	---	-------	---	---------	------------	------------

Origins Laboratory, Inc.



The results in this report apply to the samples analyzed in accordance with the chain of custody document. This analytical report must be reproduced in its entirety.

Eagle Environmental Consulting, Inc.
8000 W 44th Ave
Wheat Ridge CO 80033

Martin C Eckert III
Project Number: -
Project: Bonanza - Kiyota 63N67W 35NWSE

EX-SS-04@9'

7/18/2022 10:21:00AM

Analyte	Result	Min Detection Limit	Reporting Limit	Units	Dilution	Batch	Prepared	Analyzed	Notes
---------	--------	---------------------	-----------------	-------	----------	-------	----------	----------	-------

Origins Laboratory, Inc.
Y207355-04 (Soil)

Boron (DTPA Sorbitol)

Boron	0.196	0.0981	mg/L	1	B2G1909	07/19/2022	07/20/2022	
-------	-------	--------	------	---	---------	------------	------------	--

DRO/ORO by EPA 8015D

Diesel (C10-C28)	ND	25.0	mg/kg	1	B2G2012	07/20/2022	07/26/2022	U
Residual Range Organics (C28-C40)	ND	100	"	"	"	"	"	U

Surrogate: o-Terphenyl	113 %	50-150	"	"	"	"	"
------------------------	-------	--------	---	---	---	---	---

GBTEX+TMBs by 8260D

1,2,4-Trimethylbenzene	ND	0.00200	mg/kg	1	B2G1902	07/19/2022	07/19/2022	U
1,3,5-Trimethylbenzene	ND	0.00200	"	"	"	"	"	U
Benzene	ND	0.00200	"	"	"	"	"	U
Ethylbenzene	ND	0.00200	"	"	"	"	"	U
Toluene	ND	0.00200	"	"	"	"	"	U
Xylenes, total	ND	0.00200	"	"	"	"	"	U
Gasoline Range Hydrocarbons	ND	0.200	"	"	"	"	"	U

Surrogate: 1,2-Dichloroethane-d4	119 %	70-130	"	"	"	"	"
----------------------------------	-------	--------	---	---	---	---	---

Origins Laboratory, Inc.



The results in this report apply to the samples analyzed in accordance with the chain of custody document. This analytical report must be reproduced in its entirety.

Eagle Environmental Consulting, Inc.
8000 W 44th Ave
Wheat Ridge CO 80033

Martin C Eckert III
Project Number: -
Project: Bonanza - Kiyota 63N67W 35NWSE

EX-SS-04@9'

7/18/2022 10:21:00AM

Analyte	Result	Min Detection Limit	Reporting Limit	Units	Dilution	Batch	Prepared	Analyzed	Notes
---------	--------	---------------------	-----------------	-------	----------	-------	----------	----------	-------

Origins Laboratory, Inc.
Y207355-04 (Soil)

GBTEX+TMBs by 8260D

Surrogate: Toluene-d8	95.1 %	70-130	B2G19 02	07/19/2022	07/19/2022
Surrogate: 4-Bromofluorobenzene	101 %	70-130	"	"	"

Metals by Saturated Paste by EPA 6010

Calcium	3.19	0.499	meq/L	10	[CALC]	07/19/2022	07/20/2022
Magnesium	1.14	0.823	"	"	"	"	"
Sodium	0.920	0.435	"	"	"	"	"

PAH by 8270D SIM

1-Methylnaphthalene	ND	0.000364	0.00067	mg/Kg	1	L627973	07/21/2022	07/22/2022	
2-Methylnaphthalene	ND	0.000645	0.00067	"	"	"	"	"	
Acenaphthene	ND	0.000304	0.00067	"	"	"	"	"	
Anthracene	ND	0.000334	0.00067	"	"	"	"	"	
Benzo(a)anthracene	ND	0.000493	0.00067	"	"	"	"	"	
Benzo(a)pyrene	ND	0.000468	0.00067	"	"	"	"	"	
Benzo(b)fluoranthene	0.000611	0.000585	0.00067	"	"	"	"	"	J
Benzo(k)fluoranthene	ND	0.000437	0.00067	"	"	"	"	"	
Chrysene	ND	0.000624	0.00067	"	"	"	"	"	
Dibenz(a,h)anthracene	ND	0.000614	0.00067	"	"	"	"	"	
Fluoranthene	0.000517	0.000394	0.00067	"	"	"	"	"	J

Origins Laboratory, Inc.



The results in this report apply to the samples analyzed in accordance with the chain of custody document. This analytical report must be reproduced in its entirety.

Eagle Environmental Consulting, Inc.
8000 W 44th Ave
Wheat Ridge CO 80033

Martin C Eckert III
Project Number: -
Project: Bonanza - Kiyota 63N67W 35NWSE

EX-SS-04@9'

7/18/2022 10:21:00AM

Analyte	Result	Min Detection Limit	Reporting Limit	Units	Dilution	Batch	Prepared	Analyzed	Notes
---------	--------	---------------------	-----------------	-------	----------	-------	----------	----------	-------

Waypoint Analytical, Inc.
Y207355-04 (Soil)

PAH by 8270D SIM

Fluorene	ND	0.000286	0.00067	mg/Kg	1	L627973	07/21/2022	07/22/2022	
Indeno(1,2,3-cd)pyrene	ND	0.000627	0.00067	"	"	"	"	"	
Naphthalene	ND	0.000484	0.00067	"	"	"	"	"	
Pyrene	0.000653	0.000643	0.00067	"	"	"	"	"	J

Surrogate: 2-Fluorobiphenyl	60.6 %		33-115			"	"	"	
Surrogate: 4-Terphenyl-d14	68.3 %		33-122			"	"	"	
Surrogate: Nitrobenzene-d5	58.8 %		29-110			"	"	"	

pH in Soil by 9045D

pH	8.31			pH Units	1	B2G1912	07/19/2022	07/20/2022	
----	------	--	--	----------	---	---------	------------	------------	--

SAR by 20B Saturated Paste

SAR	0.625			SAR	1	B2G1906	07/19/2022	07/20/2022	
-----	-------	--	--	-----	---	---------	------------	------------	--

Specific Conductance Mod. 9050A

Specific Conductance (EC)	0.601		0.00500	mmhos/cm	1	B2G1912	07/19/2022	07/20/2022	
---------------------------	-------	--	---------	----------	---	---------	------------	------------	--

Origins Laboratory, Inc.



The results in this report apply to the samples analyzed in accordance with the chain of custody document. This analytical report must be reproduced in its entirety.

Eagle Environmental Consulting, Inc.
8000 W 44th Ave
Wheat Ridge CO 80033

Martin C Eckert III
Project Number: -
Project: Bonanza - Kiyota 63N67W 35NWSE

EX-FS-01@10'

7/18/2022 10:23:00AM

Analyte	Result	Min Detection Limit	Reporting Limit	Units	Dilution	Batch	Prepared	Analyzed	Notes
---------	--------	---------------------	-----------------	-------	----------	-------	----------	----------	-------

Origins Laboratory, Inc.
Y207355-05 (Soil)

Boron (DTPA Sorbitol)

Boron	0.161	0.0998	mg/L	1	B2G1909	07/19/2022	07/20/2022	
-------	-------	--------	------	---	---------	------------	------------	--

DRO/ORO by EPA 8015D

Diesel (C10-C28)	ND	25.0	mg/kg	1	B2G2012	07/20/2022	07/26/2022	U
Residual Range Organics (C28-C40)	ND	100	"	"	"	"	"	U

Surrogate: o-Terphenyl	117 %	50-150	"	"	"	"	"
------------------------	-------	--------	---	---	---	---	---

GBTEX+TMBs by 8260D

1,2,4-Trimethylbenzene	ND	0.00200	mg/kg	1	B2G1902	07/19/2022	07/19/2022	U
1,3,5-Trimethylbenzene	ND	0.00200	"	"	"	"	"	U
Benzene	ND	0.00200	"	"	"	"	"	U
Ethylbenzene	ND	0.00200	"	"	"	"	"	U
Toluene	ND	0.00200	"	"	"	"	"	U
Xylenes, total	ND	0.00200	"	"	"	"	"	U
Gasoline Range Hydrocarbons	ND	0.200	"	"	"	"	"	U

Surrogate: 1,2-Dichloroethane-d4	115 %	70-130	"	"	"	"	"
----------------------------------	-------	--------	---	---	---	---	---

Origins Laboratory, Inc.



The results in this report apply to the samples analyzed in accordance with the chain of custody document. This analytical report must be reproduced in its entirety.

Eagle Environmental Consulting, Inc.
8000 W 44th Ave
Wheat Ridge CO 80033

Martin C Eckert III
Project Number: -
Project: Bonanza - Kiyota 63N67W 35NWSE

EX-FS-01@10'

7/18/2022 10:23:00AM

Analyte	Result	Min Detection Limit	Reporting Limit	Units	Dilution	Batch	Prepared	Analyzed	Notes
---------	--------	---------------------	-----------------	-------	----------	-------	----------	----------	-------

Origins Laboratory, Inc.
Y207355-05 (Soil)

GBTEX+TMBs by 8260D

Surrogate: Toluene-d8	99.9 %	70-130	B2G19 02	07/19/2022	07/19/2022
Surrogate: 4-Bromofluorobenzene	95.9 %	70-130	"	"	"

Metals by Saturated Paste by EPA 6010

Calcium	1.03	0.499	meq/L	10	[CALC]	07/19/2022	07/20/2022
Magnesium	ND	0.823	"	"	"	"	"
Sodium	1.94	0.435	"	"	"	"	"

PAH by 8270D SIM

1-Methylnaphthalene	ND	0.000364	0.00067	mg/Kg	1	L627973	07/21/2022	07/22/2022
2-Methylnaphthalene	ND	0.000645	0.00067	"	"	"	"	"
Acenaphthene	ND	0.000304	0.00067	"	"	"	"	"
Anthracene	ND	0.000334	0.00067	"	"	"	"	"
Benzo(a)anthracene	ND	0.000493	0.00067	"	"	"	"	"
Benzo(a)pyrene	ND	0.000468	0.00067	"	"	"	"	"
Benzo(b)fluoranthene	ND	0.000585	0.00067	"	"	"	"	"
Benzo(k)fluoranthene	ND	0.000437	0.00067	"	"	"	"	"
Chrysene	ND	0.000624	0.00067	"	"	"	"	"
Dibenz(a,h)anthracene	ND	0.000614	0.00067	"	"	"	"	"
Fluoranthene	ND	0.000394	0.00067	"	"	"	"	"

Origins Laboratory, Inc.



The results in this report apply to the samples analyzed in accordance with the chain of custody document. This analytical report must be reproduced in its entirety.

Eagle Environmental Consulting, Inc.
8000 W 44th Ave
Wheat Ridge CO 80033

Martin C Eckert III
Project Number: -
Project: Bonanza - Kiyota 63N67W 35NWSE

EX-FS-01@10'

7/18/2022 10:23:00AM

Analyte	Result	Min Detection Limit	Reporting Limit	Units	Dilution	Batch	Prepared	Analyzed	Notes
---------	--------	---------------------	-----------------	-------	----------	-------	----------	----------	-------

Waypoint Analytical, Inc.
Y207355-05 (Soil)

PAH by 8270D SIM

Fluorene	ND	0.000286	0.00067	mg/Kg	1	L627973	07/21/2022	07/22/2022
Indeno(1,2,3-cd)pyrene	ND	0.000627	0.00067	"	"	"	"	"
Naphthalene	ND	0.000484	0.00067	"	"	"	"	"
Pyrene	ND	0.000643	0.00067	"	"	"	"	"

Surrogate: 2-Fluorobiphenyl	56.5 %	33-115	"	"	"
Surrogate: 4-Terphenyl-d14	67.8 %	33-122	"	"	"
Surrogate: Nitrobenzene-d5	57.4 %	29-110	"	"	"

pH in Soil by 9045D

pH	8.14	pH Units	1	B2G1912	07/19/2022	07/20/2022
----	------	----------	---	---------	------------	------------

SAR by 20B Saturated Paste

SAR	2.28	SAR	1	B2G1906	07/19/2022	07/20/2022
-----	------	-----	---	---------	------------	------------

Specific Conductance Mod. 9050A

Specific Conductance (EC)	0.417	0.00500	mmhos/cm	1	B2G1912	07/19/2022	07/20/2022
---------------------------	-------	---------	----------	---	---------	------------	------------

Origins Laboratory, Inc.



The results in this report apply to the samples analyzed in accordance with the chain of custody document. This analytical report must be reproduced in its entirety.

Eagle Environmental Consulting, Inc.
8000 W 44th Ave
Wheat Ridge CO 80033

Martin C Eckert III
Project Number: -
Project: Bonanza - Kiyota 63N67W 35NWSE

Volatile Organic Compounds by GC/MS SW846 8260D - Quality Control
Origins Laboratory, Inc.

Analyte	Result	Reporting Limit	Units	Spike Level	Source Result	%REC	%REC Limits	RPD	RPD Limit	Notes
Batch B2G1902 - EPA 5030 (soil)										
Blank (B2G1902-BLK1)					Prepared: 07/19/2022 Analyzed: 07/19/2022					
1,2,4-Trimethylbenzene	ND	0.00200	mg/kg							U
1,3,5-Trimethylbenzene	ND	0.00200	"							U
Benzene	ND	0.00200	"							U
Ethylbenzene	ND	0.00200	"							U
Naphthalene	ND	0.0100	"							U
Toluene	ND	0.00200	"							U
Xylenes, total	ND	0.00200	"							U
Gasoline Range Hydrocarbons	ND	0.200	"							U
Surrogate: 1,2-Dichloroethane-d4	0.14		"	0.125		110	70-130			
Surrogate: Toluene-d8	0.12		"	0.125		98.7	70-130			
Surrogate: 4-Bromofluorobenzene	0.12		"	0.125		96.6	70-130			

Origins Laboratory, Inc.



The results in this report apply to the samples analyzed in accordance with the chain of custody document. This analytical report must be reproduced in its entirety.

Eagle Environmental Consulting, Inc.
8000 W 44th Ave
Wheat Ridge CO 80033

Martin C Eckert III
Project Number: -
Project: Bonanza - Kiyota 63N67W 35NWSE

Volatile Organic Compounds by GC/MS SW846 8260D - Quality Control
Origins Laboratory, Inc.

Analyte	Result	Reporting Limit	Units	Spike Level	Source Result	%REC	%REC Limits	RPD	RPD Limit	Notes
---------	--------	-----------------	-------	-------------	---------------	------	-------------	-----	-----------	-------

Batch B2G1902 - EPA 5030 (soil)

LCS (B2G1902-BS1)

Prepared: 07/19/2022 Analyzed: 07/19/2022

1,2,4-Trimethylbenzene	0.0963	0.00200	mg/kg	0.100		96.3	70-130			
1,3,5-Trimethylbenzene	0.0986	0.00200	"	0.100		98.6	70-130			
Benzene	0.0972	0.00200	"	0.100		97.2	70-130			
Ethylbenzene	0.0983	0.00200	"	0.100		98.3	70-130			
Naphthalene	0.102	0.0100	"	0.100		102	70-130			
Toluene	0.0960	0.00200	"	0.100		96.0	70-130			
o-Xylene	0.100	0.00200	"	0.100		100	70-130			
m,p-Xylene	0.192	0.00400	"	0.200		96.1	70-130			
Surrogate: 1,2-Dichloroethane-d4	0.14		"	0.125		109	70-130			
Surrogate: Toluene-d8	0.13		"	0.125		104	70-130			
Surrogate: 4-Bromofluorobenzene	0.13		"	0.125		103	70-130			

Origins Laboratory, Inc.



The results in this report apply to the samples analyzed in accordance with the chain of custody document. This analytical report must be reproduced in its entirety.

Eagle Environmental Consulting, Inc.
8000 W 44th Ave
Wheat Ridge CO 80033

Martin C Eckert III
Project Number: -
Project: Bonanza - Kiyota 63N67W 35NWSE

Volatile Organic Compounds by GC/MS SW846 8260D - Quality Control
Origins Laboratory, Inc.

Analyte	Result	Reporting Limit	Units	Spike Level	Source Result	%REC	%REC Limits	RPD	RPD Limit	Notes
Batch B2G1902 - EPA 5030 (soil)										
Matrix Spike (B2G1902-MS1)		Source: Y207355-01			Prepared: 07/19/2022 Analyzed: 07/19/2022					
1,2,4-Trimethylbenzene	0.101	0.00200	mg/kg	0.100	ND	101	70-130			
1,3,5-Trimethylbenzene	0.101	0.00200	"	0.100	ND	101	70-130			
Benzene	0.102	0.00200	"	0.100	ND	102	70-130			
Ethylbenzene	0.0984	0.00200	"	0.100	ND	98.4	70-130			
Naphthalene	0.114	0.0100	"	0.100	ND	114	70-130			
Toluene	0.0998	0.00200	"	0.100	ND	99.8	70-130			
o-Xylene	0.102	0.00200	"	0.100	ND	102	70-130			
m,p-Xylene	0.195	0.00400	"	0.200	ND	97.3	70-130			
Surrogate: 1,2-Dichloroethane-d4	0.14		"	0.125		110	70-130			
Surrogate: Toluene-d8	0.13		"	0.125		103	70-130			
Surrogate: 4-Bromofluorobenzene	0.13		"	0.125		102	70-130			

Origins Laboratory, Inc.



The results in this report apply to the samples analyzed in accordance with the chain of custody document. This analytical report must be reproduced in its entirety.

Eagle Environmental Consulting, Inc.
8000 W 44th Ave
Wheat Ridge CO 80033

Martin C Eckert III
Project Number: -
Project: Bonanza - Kiyota 63N67W 35NWSE

Volatile Organic Compounds by GC/MS SW846 8260D - Quality Control
Origins Laboratory, Inc.

Analyte	Result	Reporting Limit	Units	Spike Level	Source Result	%REC	%REC Limits	RPD	RPD Limit	Notes
Batch B2G1902 - EPA 5030 (soil)										
Matrix Spike Dup (B2G1902-MSD1)		Source: Y207355-01			Prepared: 07/19/2022 Analyzed: 07/19/2022					
1,2,4-Trimethylbenzene	0.0981	0.00200	mg/kg	0.100	ND	98.1	70-130	2.60	20	
1,3,5-Trimethylbenzene	0.0988	0.00200	"	0.100	ND	98.8	70-130	2.60	20	
Benzene	0.0982	0.00200	"	0.100	ND	98.2	70-130	3.32	20	
Ethylbenzene	0.0979	0.00200	"	0.100	ND	97.9	70-130	0.489	20	
Naphthalene	0.116	0.0100	"	0.100	ND	116	70-130	1.75	20	
Toluene	0.0937	0.00200	"	0.100	ND	93.7	70-130	6.26	20	
o-Xylene	0.101	0.00200	"	0.100	ND	101	70-130	1.70	20	
m,p-Xylene	0.192	0.00400	"	0.200	ND	96.2	70-130	1.06	20	
Surrogate: 1,2-Dichloroethane-d4	0.14		"	0.125		111	70-130			
Surrogate: Toluene-d8	0.12		"	0.125		99.7	70-130			
Surrogate: 4-Bromofluorobenzene	0.13		"	0.125		104	70-130			

Origins Laboratory, Inc.



The results in this report apply to the samples analyzed in accordance with the chain of custody document. This analytical report must be reproduced in its entirety.

Eagle Environmental Consulting, Inc.
8000 W 44th Ave
Wheat Ridge CO 80033

Martin C Eckert III
Project Number: -
Project: Bonanza - Kiyota 63N67W 35NWSE

Volatile Organic Compounds by GC/MS SW846 8260D - Quality Control
Origins Laboratory, Inc.

Analyte	Result	Reporting Limit	Units	Spike Level	Source Result	%REC	%REC Limits	RPD	RPD Limit	Notes
Batch B2G2012 - EPA 3580										
Blank (B2G2012-BLK1)					Prepared: 07/20/2022 Analyzed: 07/25/2022					
Diesel (C10-C28)	ND	25.0	mg/kg							U
Residual Range Organics (C28-C40)	ND	100	"							U
Surrogate: o-Terphenyl	28		"	24.9		112	50-150			

Origins Laboratory, Inc.



The results in this report apply to the samples analyzed in accordance with the chain of custody document. This analytical report must be reproduced in its entirety.

Eagle Environmental Consulting, Inc.
8000 W 44th Ave
Wheat Ridge CO 80033

Martin C Eckert III
Project Number: -
Project: Bonanza - Kiyota 63N67W 35NWSE

Extractable Petroleum Hydrocarbons by 8015D - Quality Control
Origins Laboratory, Inc.

Analyte	Result	Reporting Limit	Units	Spike Level	Source Result	%REC	%REC Limits	RPD	RPD Limit	Notes
---------	--------	-----------------	-------	-------------	---------------	------	-------------	-----	-----------	-------

Batch B2G2012 - EPA 3580

LCS (B2G2012-BS1)

Prepared: 07/20/2022 Analyzed: 07/25/2022

Diesel (C10-C28)	983	50.0	mg/kg	1000		98.3	70-130			
Residual Range Organics (C28-C40)	1130	200	"	1000		113	70-130			
Surrogate: o-Terphenyl	53		"	49.8		106	50-150			

Origins Laboratory, Inc.



The results in this report apply to the samples analyzed in accordance with the chain of custody document. This analytical report must be reproduced in its entirety.

Eagle Environmental Consulting, Inc.
8000 W 44th Ave
Wheat Ridge CO 80033

Martin C Eckert III
Project Number: -
Project: Bonanza - Kiyota 63N67W 35NWSE

Extractable Petroleum Hydrocarbons by 8015D - Quality Control
Origins Laboratory, Inc.

Analyte	Result	Reporting Limit	Units	Spike Level	Source Result	%REC	%REC Limits	RPD	RPD Limit	Notes
---------	--------	-----------------	-------	-------------	---------------	------	-------------	-----	-----------	-------

Batch B2G2012 - EPA 3580

Matrix Spike (B2G2012-MS1)		Source: Y207355-01			Prepared: 07/20/2022 Analyzed: 07/25/2022					
Diesel (C10-C28)	974	50.0	mg/kg	1000	ND	97.4	70-130			
Residual Range Organics (C28-C40)	1090	200	"	1000	ND	109	70-130			
Surrogate: o-Terphenyl	50		"	49.8		101	50-150			

Origins Laboratory, Inc.



The results in this report apply to the samples analyzed in accordance with the chain of custody document. This analytical report must be reproduced in its entirety.

Eagle Environmental Consulting, Inc.
8000 W 44th Ave
Wheat Ridge CO 80033

Martin C Eckert III
Project Number: -
Project: Bonanza - Kiyota 63N67W 35NWSE

Extractable Petroleum Hydrocarbons by 8015D - Quality Control Origins Laboratory, Inc.

Analyte	Result	Reporting Limit	Units	Spike Level	Source Result	%REC	%REC Limits	RPD	RPD Limit	Notes
---------	--------	-----------------	-------	-------------	---------------	------	-------------	-----	-----------	-------

Batch B2G2012 - EPA 3580

Matrix Spike Dup (B2G2012-MSD1)		Source: Y207355-01			Prepared: 07/20/2022 Analyzed: 07/25/2022					
Diesel (C10-C28)	1160	50.0	mg/kg	1000	ND	116	70-130	17.7	35	
Residual Range Organics (C28-C40)	1280	200	"	1000	ND	128	70-130	16.6	35	
Surrogate: o-Terphenyl	60		"	49.8		121	50-150			

Origins Laboratory, Inc.



The results in this report apply to the samples analyzed in accordance with the chain of custody document. This analytical report must be reproduced in its entirety.

Eagle Environmental Consulting, Inc.
8000 W 44th Ave
Wheat Ridge CO 80033

Martin C Eckert III
Project Number: -
Project: Bonanza - Kiyota 63N67W 35NWSE

Extractable Petroleum Hydrocarbons by 8015D - Quality Control

Origins Laboratory, Inc.

Analyte	Result	Reporting Limit	Units	Spike Level	Source Result	%REC	%REC Limits	RPD	RPD Limit	Notes
---------	--------	-----------------	-------	-------------	---------------	------	-------------	-----	-----------	-------

Metals by SM 3500 Series Methods - Quality Control

Origins Laboratory, Inc.

Analyte	Result	Reporting Limit	Units	Spike Level	Source Result	%REC	%REC Limits	RPD	RPD Limit	Notes
---------	--------	-----------------	-------	-------------	---------------	------	-------------	-----	-----------	-------

Batch B2G2116 - Default Prep Metals

Blank (B2G2116-BLK1)

Prepared: 07/21/2022 Analyzed: 07/27/2022

Arsenic	ND	0.000100	mg/kg							U
Barium	ND	0.0100	"							U
Cadmium	ND	0.000100	"							U
Copper	ND	0.0100	"							U
Lead	ND	0.00100	"							U
Nickel	ND	0.00100	"							U
Selenium	ND	0.000100	"							U
Silver	ND	0.000100	"							U
Zinc	ND	0.100	"							U

LCS (B2G2116-BS1)

Prepared: 07/21/2022 Analyzed: 07/27/2022

Arsenic	0.0536	0.000100	mg/kg	0.0500		107	80-120
Barium	5.19	0.0100	"	5.00		104	80-120
Cadmium	0.0524	0.000100	"	0.0500		105	80-120
Copper	0.546	0.0100	"	0.500		109	80-120
Lead	0.0512	0.00100	"	0.0500		102	80-120
Nickel	0.0535	0.00100	"	0.0500		107	80-120
Selenium	0.0515	0.000100	"	0.0500		103	80-120
Silver	0.0542	0.000100	"	0.0500		108	80-120
Zinc	0.510	0.100	"	0.500		102	80-120

Matrix Spike (B2G2116-MS1)

Source: Y207317-01

Prepared: 07/21/2022 Analyzed: 07/27/2022

Origins Laboratory, Inc.



The results in this report apply to the samples analyzed in accordance with the chain of custody document. This analytical report must be reproduced in its entirety.

Eagle Environmental Consulting, Inc.
8000 W 44th Ave
Wheat Ridge CO 80033

Martin C Eckert III
Project Number: -
Project: Bonanza - Kiyota 63N67W 35NWSE

Metals by SM 3500 Series Methods - Quality Control

Origins Laboratory, Inc.

Analyte	Result	Reporting Limit	Units	Spike Level	Source Result	%REC	%REC Limits	RPD	RPD Limit	Notes
---------	--------	-----------------	-------	-------------	---------------	------	-------------	-----	-----------	-------

Batch B2G2116 - Default Prep Metals

Matrix Spike (B2G2116-MS1)		Source: Y207317-01			Prepared: 07/21/2022 Analyzed: 07/27/2022					
Arsenic	5.58	0.0149	mg/kg	7.47	2.44	42.0	75-125			QM-07
Barium	890	1.49	"	747	173	96.0	75-125			
Cadmium	8.09	0.0149	"	7.47	0.111	107	75-125			
Copper	67.9	1.49	"	74.7	5.91	83.0	75-125			
Lead	13.6	0.149	"	7.47	6.35	96.4	75-125			
Nickel	10.9	0.149	"	7.47	6.00	65.2	75-125			QM-07
Selenium	4.24	0.0149	"	7.47	0.0902	55.6	75-125			QM-07
Silver	8.11	0.0149	"	7.47	0.0262	108	75-125			
Zinc	78.5	14.9	"	74.7	23.6	73.5	75-125			QM-07
Matrix Spike Dup (B2G2116-MSD1)		Source: Y207317-01			Prepared: 07/21/2022 Analyzed: 07/27/2022					
Arsenic	6.22	0.0165	mg/kg	8.23	2.44	45.8	75-125	10.8	20	QM-07
Barium	1030	1.65	"	823	173	104	75-125	14.4	20	
Cadmium	9.04	0.0165	"	8.23	0.111	108	75-125	11.1	20	
Copper	75.2	1.65	"	82.3	5.91	84.1	75-125	10.1	20	
Lead	14.4	0.165	"	8.23	6.35	97.6	75-125	5.96	20	
Nickel	11.9	0.165	"	8.23	6.00	71.6	75-125	9.00	20	QM-07
Selenium	4.68	0.0165	"	8.23	0.0902	55.7	75-125	9.81	20	QM-07
Silver	9.03	0.0165	"	8.23	0.0262	109	75-125	10.8	20	
Zinc	85.8	16.5	"	82.3	23.6	75.6	75-125	8.96	20	QM-07

Origins Laboratory, Inc.



The results in this report apply to the samples analyzed in accordance with the chain of custody document. This analytical report must be reproduced in its entirety.

Eagle Environmental Consulting, Inc.
8000 W 44th Ave
Wheat Ridge CO 80033

Martin C Eckert III
Project Number: -
Project: Bonanza - Kiyota 63N67W 35NWSE

Saturated Paste - Quality Control Origins Laboratory, Inc.

Analyte	Result	Reporting Limit	Units	Spike Level	Source Result	%REC	%REC Limits	RPD	RPD Limit	Notes
Batch B2G1912 - NO PREP										
Blank (B2G1912-BLK1)					Prepared: 07/19/2022 Analyzed: 07/20/2022					
pH	0.00		pH Units							
Specific Conductance (EC)	0.00160	0.00500	mmhos/cm							
Duplicate (B2G1912-DUP1)					Source: Y207348-01 Prepared: 07/19/2022 Analyzed: 07/20/2022					
pH	8.45		pH Units		8.40			0.593	25	
Specific Conductance (EC)	0.413	0.00500	mmhos/cm		0.472			13.4	25	

Origins Laboratory, Inc.



The results in this report apply to the samples analyzed in accordance with the chain of custody document. This analytical report must be reproduced in its entirety.

Eagle Environmental Consulting, Inc.
8000 W 44th Ave
Wheat Ridge CO 80033

Martin C Eckert III
Project Number: -
Project: Bonanza - Kiyota 63N67W 35NWSE

PAH by 8270D SIM - Quality Control
Waypoint Analytical, Inc.

Analyte	Result	Reporting Limit	Units	Spike Level	Source Result	%REC	%REC Limits	RPD	RPD Limit	Notes
---------	--------	-----------------	-------	-------------	---------------	------	-------------	-----	-----------	-------

Batch L627973 - 3550B

MSD (L 82059-MSD-L627973)		Source: 82059			Prepared: 07/21/2022 Analyzed: 07/22/2022					
2-Methylnaphthalene	0.101	0.000645	mg/Kg	0.167	<0.000645	60.4	30-130	6.8	30	
Acenaphthene	0.121	0.000304	"	0.167	<0.000304	72.4	30-130	5	30	
Pyrene	0.116	0.000643	"	0.167	0.000927	68.9	30-130	0	30	
Naphthalene	0.0957	0.000484	"	0.167	<0.000484	57.3	30-130	8.3	30	
Indeno(1,2,3-cd)pyrene	0.106	0.000627	"	0.167	0.00094	62.9	30-130	5.5	30	
Fluorene	0.109	0.000286	"	0.167	<0.000286	65.2	30-130	3.7	30	
Benzo(a)anthracene	0.12	0.000493	"	0.167	0.000583	71.5	30-130	0.8	30	
1-Methylnaphthalene	0.102	0.000364	"	0.167	<0.000364	61	30-130	7	30	
Fluoranthene	0.117	0.000394	"	0.167	0.000979	69.4	30-130	0.8	30	
Anthracene	0.108	0.000334	"	0.167	<0.000334	64.6	30-130	1.8	30	
Benzo(a)pyrene	0.119	0.000468	"	0.167	0.000857	70.7	30-130	0.8	30	
Benzo(b)fluoranthene	0.107	0.000585	"	0.167	0.000847	63.5	30-130	3.6	30	
Dibenz(a,h)anthracene	0.0975	0.000614	"	0.167	0.000775	57.9	30-130	6.4	30	
Benzo(k)fluoranthene	0.0978	0.000437	"	0.167	0.000524	58.2	30-130	0.7	30	
Chrysene	0.11	0.000624	"	0.167	<0.000624	65.8	30-130	0.9	30	
Surrogate: 2-Fluorobiphenyl	57		"	0.333	204	57	33-115			
Surrogate: 4-Terphenyl-d14	69.9		"	0.333	241	69.9	33-122			
Surrogate: Nitrobenzene-d5	58.2		"	0.333	189	58.2	29-110			

MS (L 82059-MS-L627973)		Source: 82059			Prepared: 07/21/2022 Analyzed: 07/22/2022					
Naphthalene	0.088	0.000484	mg/Kg	0.162	<0.000484	54.3	30-130			
Pyrene	0.116	0.000643	"	0.162	0.000927	71	30-130			
1-Methylnaphthalene	0.0951	0.000364	"	0.162	<0.000364	58.7	30-130			
Indeno(1,2,3-cd)pyrene	0.112	0.000627	"	0.162	0.00094	68.5	30-130			
Fluorene	0.105	0.000286	"	0.162	<0.000286	64.8	30-130			
Fluoranthene	0.118	0.000394	"	0.162	0.000979	72.2	30-130			
Dibenz(a,h)anthracene	0.104	0.000614	"	0.162	0.000775	63.7	30-130			

Origins Laboratory, Inc.



The results in this report apply to the samples analyzed in accordance with the chain of custody document. This analytical report must be reproduced in its entirety.

Eagle Environmental Consulting, Inc.
8000 W 44th Ave
Wheat Ridge CO 80033

Martin C Eckert III
Project Number: -
Project: Bonanza - Kiyota 63N67W 35NWSE

PAH by 8270D SIM - Quality Control
Waypoint Analytical, Inc.

Analyte	Result	Reporting Limit	Units	Spike Level	Source Result	%REC	%REC Limits	RPD	RPD Limit	Notes
---------	--------	-----------------	-------	-------------	---------------	------	-------------	-----	-----------	-------

Batch L627973 - 3550B

MS (L 82059-MS-L627973)		Source: 82059			Prepared: 07/21/2022 Analyzed: 07/22/2022					
Acenaphthene	0.115	0.000304	mg/Kg	0.162	<0.000304	70.9	30-130			
2-Methylnaphthalene	0.0943	0.000645	"	0.162	<0.000645	58.2	30-130			
Chrysene	0.111	0.000624	"	0.162	<0.000624	68.5	30-130			
Anthracene	0.106	0.000334	"	0.162	<0.000334	65.4	30-130			
Benzo(a)anthracene	0.121	0.000493	"	0.162	0.000583	74.3	30-130			
Benzo(a)pyrene	0.12	0.000468	"	0.162	0.000857	73.5	30-130			
Benzo(b)fluoranthene	0.111	0.000585	"	0.162	0.000847	67.9	30-130			
Benzo(k)fluoranthene	0.0985	0.000437	"	0.162	0.000524	60.4	30-130			
Surrogate: 2-Fluorobiphenyl	62.7		"	0.325	204	62.7	33-115			
Surrogate: Nitrobenzene-d5	61.2		"	0.325	189	61.2	29-110			
Surrogate: 4-Terphenyl-d14	73.2		"	0.325	241	73.2	33-122			

LCS (LCS-L627973)

Prepared: 07/21/2022 Analyzed: 07/22/2022

Fluoranthene	0.116	0.000394	mg/Kg	0.167		69.4	30-130
Anthracene	0.106	0.000334	"	0.167		63.4	30-130
Chrysene	0.109	0.000624	"	0.167		65.2	30-130
Benzo(k)fluoranthene	0.1	0.000437	"	0.167		59.8	30-130
Benzo(b)fluoranthene	0.114	0.000585	"	0.167		68.2	30-130
Benzo(a)pyrene	0.115	0.000468	"	0.167		68.8	30-130
Benzo(a)anthracene	0.117	0.000493	"	0.167		70	30-130
Dibenz(a,h)anthracene	0.106	0.000614	"	0.167		63.4	30-130
Acenaphthene	0.121	0.000304	"	0.167		72.4	30-130
2-Methylnaphthalene	0.0998	0.000645	"	0.167		59.7	30-130
1-Methylnaphthalene	0.101	0.000364	"	0.167		60.4	30-130
Indeno(1,2,3-cd)pyrene	0.117	0.000627	"	0.167		70	30-130
Naphthalene	0.0943	0.000484	"	0.167		56.4	30-130
Fluorene	0.108	0.000286	"	0.167		64.6	30-130

Origins Laboratory, Inc.



The results in this report apply to the samples analyzed in accordance with the chain of custody document. This analytical report must be reproduced in its entirety.

Eagle Environmental Consulting, Inc.
8000 W 44th Ave
Wheat Ridge CO 80033

Martin C Eckert III
Project Number: -
Project: Bonanza - Kiyota 63N67W 35NWSE

PAH by 8270D SIM - Quality Control
Waypoint Analytical, Inc.

Analyte	Result	Reporting Limit	Units	Spike Level	Source Result	%REC	%REC Limits	RPD	RPD Limit	Notes
---------	--------	-----------------	-------	-------------	---------------	------	-------------	-----	-----------	-------

Batch L627973 - 3550B

LCS (LCS-L627973)

Prepared: 07/21/2022 Analyzed: 07/22/2022

Pyrene	0.114	0.000643	mg/Kg	0.167		68.2	30-130			
Surrogate: 4-Terphenyl-d14	79.2		"	0.333		79.2	33-122			
Surrogate: 2-Fluorobiphenyl	69.6		"	0.333		69.6	33-115			
Surrogate: Nitrobenzene-d5	66.6		"	0.333		66.6	29-110			

LRB (LRB-L627973)

Prepared: 07/21/2022 Analyzed: 07/22/2022

Benzo(k)fluoranthene	ND	0.00067	mg/Kg				-			
Benzo(b)fluoranthene	ND	0.00067	"				-			
Benzo(a)anthracene	ND	0.00067	"				-			
Benzo(a)pyrene	ND	0.00067	"				-			
Chrysene	ND	0.00067	"				-			
Fluoranthene	ND	0.00067	"				-			
Fluorene	ND	0.00067	"				-			
Anthracene	ND	0.00067	"				-			
Dibenz(a,h)anthracene	ND	0.00067	"				-			
Acenaphthene	ND	0.00067	"				-			
2-Methylnaphthalene	ND	0.00067	"				-			
1-Methylnaphthalene	ND	0.00067	"				-			
Naphthalene	ND	0.00067	"				-			
Indeno(1,2,3-cd)pyrene	ND	0.00067	"				-			
Pyrene	ND	0.00067	"				-			
Surrogate: 4-Terphenyl-d14	71.1		"	0.333		71.1	33-122			
Surrogate: 2-Fluorobiphenyl	65.7		"	0.333		65.7	33-115			
Surrogate: Nitrobenzene-d5	63.6		"	0.333		63.6	29-110			

Origins Laboratory, Inc.



The results in this report apply to the samples analyzed in accordance with the chain of custody document. This analytical report must be reproduced in its entirety.

Eagle Environmental Consulting, Inc.
8000 W 44th Ave
Wheat Ridge CO 80033

Martin C Eckert III
Project Number: -
Project: Bonanza - Kiyota 63N67W 35NWSE

Total Metals by 7196A - Quality Control Waypoint Analytical, Inc.

Analyte	Result	Reporting Limit	Units	Spike Level	Source Result	%REC	%REC Limits	RPD	RPD Limit	Notes
Batch L627623 -										
DUP (L 95855-DUP)		Source: 95855			Prepared: Analyzed: 07/20/2022					
Chromium, Hexavalent	ND	0.497	mg/Kg		<1.02	-		0	20	
MS (L 95855-MS)		Source: 95855			Prepared: Analyzed: 07/20/2022					
Chromium, Hexavalent	13.9	0.497	mg/Kg	8.15	<0.497	171	75-125			*
MSD (L 95855-MSD)		Source: 95855			Prepared: Analyzed: 07/20/2022					
Chromium, Hexavalent	598	24.4	mg/Kg	620	<24.4	96	75-125			
LCS (LCS)					Prepared: Analyzed: 07/20/2022					
Chromium, Hexavalent	6.53	0.244	mg/Kg	8		82	75-125			
LRB (LRB)					Prepared: Analyzed: 07/20/2022					
Chromium, Hexavalent	ND	0.5	mg/Kg							

Origins Laboratory, Inc.



The results in this report apply to the samples analyzed in accordance with the chain of custody document. This analytical report must be reproduced in its entirety.

Eagle Environmental Consulting, Inc.
8000 W 44th Ave
Wheat Ridge CO 80033

Martin C Eckert III
Project Number: -
Project: Bonanza - Kiyota 63N67W 35NWSE

Notes and Definitions

U Sample is Non-Detect.

QM-07 The spike recovery was outside acceptance limits for the MS and/or MSD. The batch was accepted based on acceptable LCS recovery.

J Estimated Value. Analyte below reported quantitation limit.

* QC Failure

ND Analyte NOT DETECTED at or above the reporting limit

RPD Relative Percent Difference

All soil results are reported on a wet weight basis.

Origins Laboratory, Inc.



The results in this report apply to the samples analyzed in accordance with the chain of custody document. This analytical report must be reproduced in its entirety.



August 10, 2022

Eagle Environmental Consulting, Inc.

Martin C Eckert III

8000 W 44th Ave

Wheat Ridge CO 80033

Project Name - Civitas - Kiyota 63N67W 35NWSE Project Number - [none]

Attached are your analytical results for Civitas - Kiyota 63N67W 35NWSE received by Origins Laboratory, Inc. August 01, 2022. This project is associated with Origins project number Y208046-01.

The analytical results in the following report were analyzed under the guidelines of EPA Methods. These methods are identified as follows; "SW" are defined in SW-846, "EPA" are defined in 40CFR part 136 and "SM" are defined in the most current revision of Standard Methods For the Examination of Water and Wastewater.

The analytical results apply specifically to the samples and analyses specified per the attached Chain of Custody. As such, this report shall not be reproduced except in full, without the written approval of Origin's laboratory.

Unless otherwise noted, the analytical results for all soil samples are reported on a wet weight basis. All analytical analyses were performed under NELAP guidelines unless noted by a data qualifier.

Any holding time exceedances, deviations from the method specifications or deviations from Origins Laboratory's Standard Operating Procedures are outlined in the case narrative.

Thank you for selecting Origins for your analytical needs. Please contact us with any questions concerning this report, or if we can help with anything at all.

Origins Laboratory, Inc.
303.433.1322
o-squad@oelabinc.com



1725 Elk Place, Denver, CO 80211 | Phone: 303.433.1322 | Fax: 303.265.9645

Eagle Environmental Consulting, Inc.

8000 W 44th Ave

Wheat Ridge CO 80033

Martin C Eckert III

Project Number: [none]

Project: Civitas - Kiyota 63N67W 35NWSE

CROSS REFERENCE REPORT

Sample ID	Laboratory ID	Matrix	Date Sampled	Date Received
Background-01@1'	Y208046-01	Soil	July 18, 2022 10:25	08/01/2022 16:20
Background-02@1'	Y208046-02	Soil	July 18, 2022 10:27	08/01/2022 16:20

Origins Laboratory, Inc.



The results in this report apply to the samples analyzed in accordance with the chain of custody document. This analytical report must be reproduced in its entirety.

Eagle Environmental Consulting, Inc.

8000 W 44th Ave

Wheat Ridge CO 80033

Martin C Eckert III

Project Number: [none]

Project: Civitas - Kiyota 63N67W 35NWSE

Origins Laboratory

Sample Receipt Checklist

Origins Work Order: Y2080410

Client: Eagle Environmental

Client Project ID: Civitas - Kiyota 63N67W 35NWSE

Checklist Completed by: TH

Date/time completed: 8/1/22

Shipped Via: HD

Airbill #: NA

Matrix(s) Received: (Check all that apply) ☒ Soil/Solid ☐ Water ☐ Other: _____

Cooler Number/Temperature: 1, 1.9 °C / _____ °C / _____ °C (Describe) _____ °C

Thermometer ID: T004

Requirement Description	Yes	No	N/A	Comments (if any)
If samples require cooling, was the temperature between 0°C to ≤ 6°C ⁽¹⁾ ?	<input checked="" type="checkbox"/>			
Is there ice present (document if blue ice is used)	<input checked="" type="checkbox"/>			
Are custody seals present on cooler? (if so, document in comments if they are signed and dated, broken or intact)		<input checked="" type="checkbox"/>		
Are custody seals present on each sample container? (if so, document in comments if they are signed and dated, broken or intact)		<input checked="" type="checkbox"/>		
Were all samples received intact ⁽¹⁾ ?	<input checked="" type="checkbox"/>			
Was adequate sample volume provided ⁽¹⁾ ?	<input checked="" type="checkbox"/>			
Are short holding time analytes or samples with HTs due within 48 hours present ⁽¹⁾ ?		<input checked="" type="checkbox"/>		
Is a chain-of-custody (COC) present and filled out completely ⁽¹⁾ ?	<input checked="" type="checkbox"/>			
Does the COC agree with the number and type of sample bottles received ⁽¹⁾ ?	<input checked="" type="checkbox"/>			
Do the sample IDs on the bottle labels match the COC ⁽¹⁾ ?	<input checked="" type="checkbox"/>			
Is the COC properly relinquished by the client with date and time recorded ⁽¹⁾ ?	<input checked="" type="checkbox"/>			
For volatiles in water – is there headspace (> ¼ inch bubble) present? If yes, contact client and note in narrative.			<input checked="" type="checkbox"/>	
Are samples preserved that require preservation and was it checked ⁽¹⁾ ? (note ID of confirmation instrument used in comments) / (preservation is not confirmed for subcontracted analyses in order to insure sample integrity)/(pH < 2 for samples preserved with HNO ₃ , HCL, H ₂ SO ₄) / (pH > 10 for samples preserved with NaAsO ₂ +NaOH, ZnAc+NaOH)			<input checked="" type="checkbox"/>	
Additional Comments (if any):				

⁽¹⁾If NO, then contact the client before proceeding with analysis and note date, time and person contacted as well as the corrective action to in the additional comments (above) and the case narrative.

Reviewed by (Project Manager) [Signature] Date/Time Reviewed 8/1/22

Origins Laboratory, Inc.

J. Bynon

The results in this report apply to the samples analyzed in accordance with the chain of custody document. This analytical report must be reproduced in its entirety.

Eagle Environmental Consulting, Inc.

8000 W 44th Ave

Wheat Ridge CO 80033

Martin C Eckert III

Project Number: [none]

Project: Civitas - Kiyota 63N67W 35NWSE

Background-01@1'

7/18/2022 10:25:00AM

Analyte	Result	Reporting Limit	Units	Dilution	Batch	Analyst	Prepared	Analyzed	Notes
---------	--------	--------------------	-------	----------	-------	---------	----------	----------	-------

Origins Laboratory, Inc.

Y208046-01 (Soil)

Table 915 metals by EPA 6020B

Arsenic	2.65	0.0876	mg/kg	5	B2H0222	CIH	08/02/2022	08/04/2022
---------	------	--------	-------	---	---------	-----	------------	------------

Origins Laboratory, Inc.



The results in this report apply to the samples analyzed in accordance with the chain of custody document. This analytical report must be reproduced in its entirety.

Eagle Environmental Consulting, Inc.

8000 W 44th Ave

Wheat Ridge CO 80033

Martin C Eckert III

Project Number: [none]

Project: Civitas - Kiyota 63N67W 35NWSE

Background-02@1'

7/18/2022 10:27:00AM

Analyte	Result	Reporting Limit	Units	Dilution	Batch	Analyst	Prepared	Analyzed	Notes
---------	--------	--------------------	-------	----------	-------	---------	----------	----------	-------

Origins Laboratory, Inc.

Y208046-02 (Soil)

Table 915 metals by EPA 6020B

Arsenic	1.86	0.0759	mg/kg	5	B2H0222	CIH	08/02/2022	08/04/2022
---------	------	--------	-------	---	---------	-----	------------	------------

Origins Laboratory, Inc.



The results in this report apply to the samples analyzed in accordance with the chain of custody document. This analytical report must be reproduced in its entirety.

Eagle Environmental Consulting, Inc.
8000 W 44th Ave
Wheat Ridge CO 80033

Martin C Eckert III
Project Number: [none]
Project: Civitas - Kiyota 63N67W 35NWSE

Metals by SM 3500 Series Methods - Quality Control

Origins Laboratory, Inc.

Analyte	Result	Reporting Limit	Units	Spike Level	Source Result	%REC	%REC Limits	RPD	RPD Limit	Notes
---------	--------	-----------------	-------	-------------	---------------	------	-------------	-----	-----------	-------

Batch B2H0222 - Default Prep Metals

Blank (B2H0222-BLK1)

Prepared: 08/02/2022 Analyzed: 08/04/2022

Arsenic	ND	0.000100	mg/kg							U
Barium	ND	0.0100	"							U
Cadmium	ND	0.000100	"							U
Copper	ND	0.0100	"							U
Lead	ND	0.00100	"							U
Nickel	ND	0.00100	"							U
Selenium	ND	0.000100	"							U
Silver	ND	0.000100	"							U
Zinc	ND	0.100	"							U

LCS (B2H0222-BS1)

Prepared: 08/02/2022 Analyzed: 08/04/2022

Arsenic	0.0530	0.000100	mg/kg	0.0500		106	80-120
Barium	5.15	0.0100	"	5.00		103	80-120
Cadmium	0.0521	0.000100	"	0.0500		104	80-120
Copper	0.579	0.0100	"	0.500		116	80-120
Lead	0.0500	0.00100	"	0.0500		100	80-120
Nickel	0.0542	0.00100	"	0.0500		108	80-120
Selenium	0.0532	0.000100	"	0.0500		106	80-120
Silver	0.0533	0.000100	"	0.0500		107	80-120
Zinc	0.521	0.100	"	0.500		104	80-120

Matrix Spike (B2H0222-MS1)

Source: Y207601-01

Prepared: 08/02/2022 Analyzed: 08/04/2022

Arsenic	8.63	0.0169	mg/kg	8.46	2.00	78.4	75-125
Barium	1090	1.69	"	846	200	105	75-125
Cadmium	8.75	0.0169	"	8.46	0.121	102	75-125
Copper	96.3	1.69	"	84.6	27.1	81.8	75-125
Lead	16.1	0.169	"	8.46	7.19	106	75-125

Origins Laboratory, Inc.



The results in this report apply to the samples analyzed in accordance with the chain of custody document. This analytical report must be reproduced in its entirety.

Eagle Environmental Consulting, Inc.
8000 W 44th Ave
Wheat Ridge CO 80033

Martin C Eckert III
Project Number: [none]
Project: Civitas - Kiyota 63N67W 35NWSE

Metals by SM 3500 Series Methods - Quality Control

Origins Laboratory, Inc.

Analyte	Result	Reporting Limit	Units	Spike Level	Source Result	%REC	%REC Limits	RPD	RPD Limit	Notes
---------	--------	-----------------	-------	-------------	---------------	------	-------------	-----	-----------	-------

Batch B2H0222 - Default Prep Metals

Matrix Spike (B2H0222-MS1)		Source: Y207601-01			Prepared: 08/02/2022 Analyzed: 08/04/2022					
Nickel	13.1	0.169	mg/kg	8.46	14.8	NR	75-125			QM-07
Selenium	8.35	0.0169	"	8.46	0.0956	97.5	75-125			
Silver	8.59	0.0169	"	8.46	0.0758	101	75-125			
Zinc	83.9	16.9	"	84.6	58.9	29.5	75-125			QM-07
Matrix Spike Dup (B2H0222-MSD1)		Source: Y207601-01			Prepared: 08/02/2022 Analyzed: 08/04/2022					
Arsenic	9.31	0.0164	mg/kg	8.18	2.00	89.4	75-125	7.55	20	
Barium	1050	1.64	"	818	200	104	75-125	3.71	20	
Cadmium	8.70	0.0164	"	8.18	0.121	105	75-125	0.538	20	
Copper	91.2	1.64	"	81.8	27.1	78.3	75-125	5.45	20	
Lead	16.0	0.164	"	8.18	7.19	107	75-125	1.12	20	
Nickel	13.7	0.164	"	8.18	14.8	NR	75-125	4.58	20	QM-07
Selenium	8.15	0.0164	"	8.18	0.0956	98.5	75-125	2.40	20	
Silver	8.77	0.0164	"	8.18	0.0758	106	75-125	2.13	20	
Zinc	84.4	16.4	"	81.8	58.9	31.1	75-125	0.528	20	QM-07

Origins Laboratory, Inc.



The results in this report apply to the samples analyzed in accordance with the chain of custody document. This analytical report must be reproduced in its entirety.

Eagle Environmental Consulting, Inc.

8000 W 44th Ave

Wheat Ridge CO 80033

Martin C Eckert III

Project Number: [none]

Project: Civitas - Kiyota 63N67W 35NWSE

Notes and Definitions

U Sample is Non-Detect.

QM-07 The spike recovery was outside acceptance limits for the MS and/or MSD. The batch was accepted based on acceptable LCS recovery.

ND Analyte NOT DETECTED at or above the reporting limit

RPD Relative Percent Difference

All soil results are reported at a wet weight basis.

Origins Laboratory, Inc.



The results in this report apply to the samples analyzed in accordance with the chain of custody document. This analytical report must be reproduced in its entirety.