

Interim Reclamation and Stormwater Inspection

Date: 10/11/2022

Operator: MALLARD EXPLORATION LLC - 10670

Location ID: 445657

Inspection Document #: 696105530

Weld County, CO

NWNE Section 27 T9N R60W

Dylan Edwardson
Reclamation Specialist, COGCC



COLORADO
**Oil & Gas Conservation
Commission**

Department of Natural Resources

Inspection Photos
Location Name: Bashor 9-60 27B Pad
Location ID: 455657



Photo 1. Taken near entrance, facing north. Photo illustrates straw wattles are not properly installed or missing. Rip-rap material is partially covered with sediment.

Inspection Photos
Location Name: Bashor 9-60 27B Pad
Location ID: 455657



Photo 2. Taken near entrance, facing northwest. Photo illustrates outlet portion of culvert is partially buried with sediment. Annual weedy vegetation (kochia) also pictured.

Inspection Photos
Location Name: Bashor 9-60 27B Pad
Location ID: 455657



Photo 3. Taken near entrance, facing west. Photo illustrates rill erosion.

Inspection Photos
Location Name: Bashor 9-60 27B Pad
Location ID: 455657



Photo 4. Photo taken from eastern portion, facing southwest. Photo illustrates ditch and berm BMP consisting of unconsolidated material, outlined in red.

Inspection Photos
Location Name: Bashor 9-60 27B Pad
Location ID: 455657



Photo 5. Taken near southeast corner of location, facing west. See comments in photo 4.

Inspection Photos
Location Name: Bashor 9-60 27B Pad
Location ID: 455657



Photo 6. Taken from southeast corner, facing south. Photo illustrates trash that has blown off location, indicated by red arrows.

Inspection Photos
Location Name: Bashor 9-60 27B Pad
Location ID: 455657



Photo 7. Taken from southeast corner, facing west. Photo illustrates perimeter ditch BMP has annual weedy vegetation growth and trash.

Inspection Photos
Location Name: Bashor 9-60 27B Pad
Location ID: 455657



Photo 8. Taken on top of topsoil stockpile, facing west. Photo illustrates topsoil has not been revegetated to comply with 1003 rules; annual weedy vegetation and bare soil observed.

Inspection Photos
Location Name: Bashor 9-60 27B Pad
Location ID: 455657



Photo 9. Taken from southwest portion of location, facing southwest. Close up photo of ditch BMP illustrating trash, annual weedy vegetation, unconsolidated material, and rill erosion.

Inspection Photos
Location Name: Bashor 9-60 27B Pad
Location ID: 455657

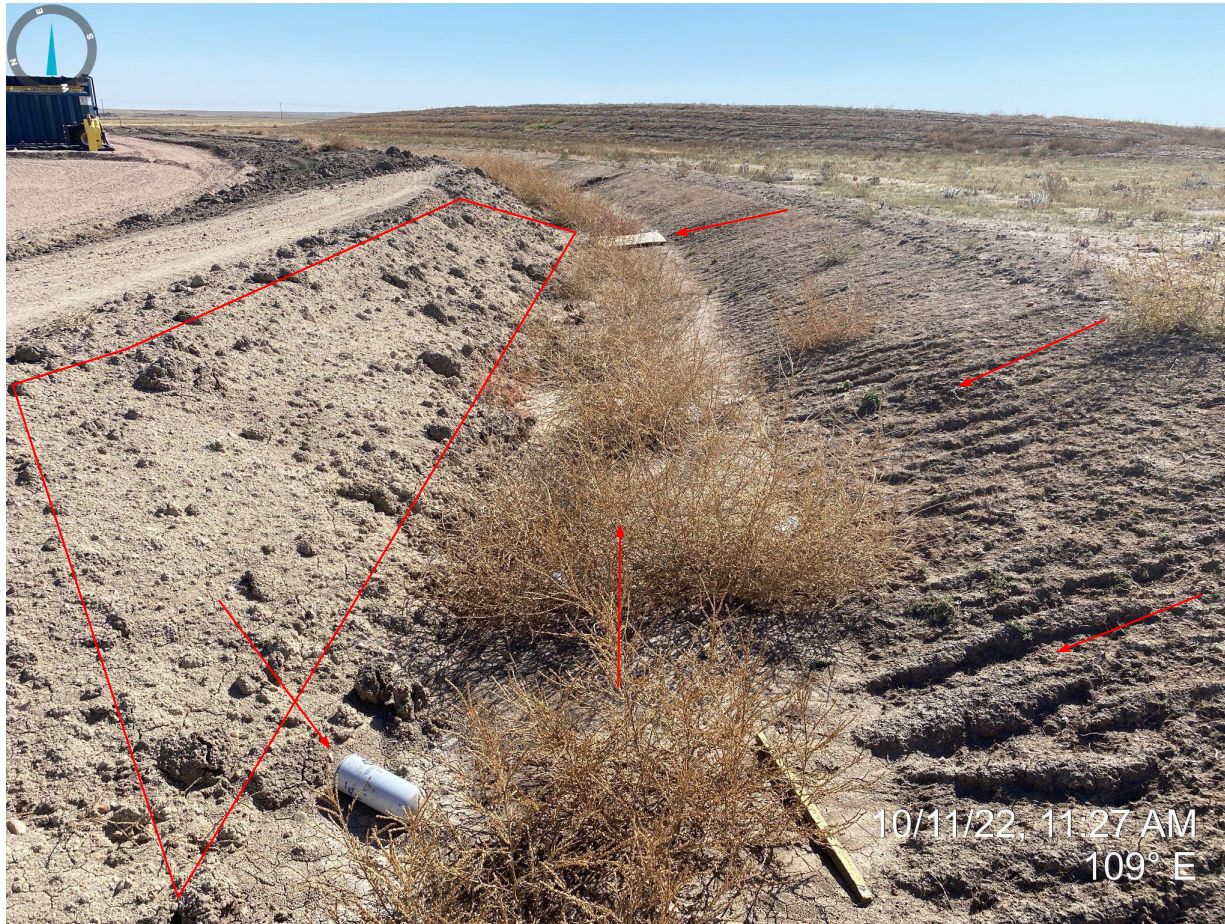


Photo 10. Taken from southwest portion of location, facing east. See comments in photo 9.

Inspection Photos
Location Name: Bashor 9-60 27B Pad
Location ID: 455657

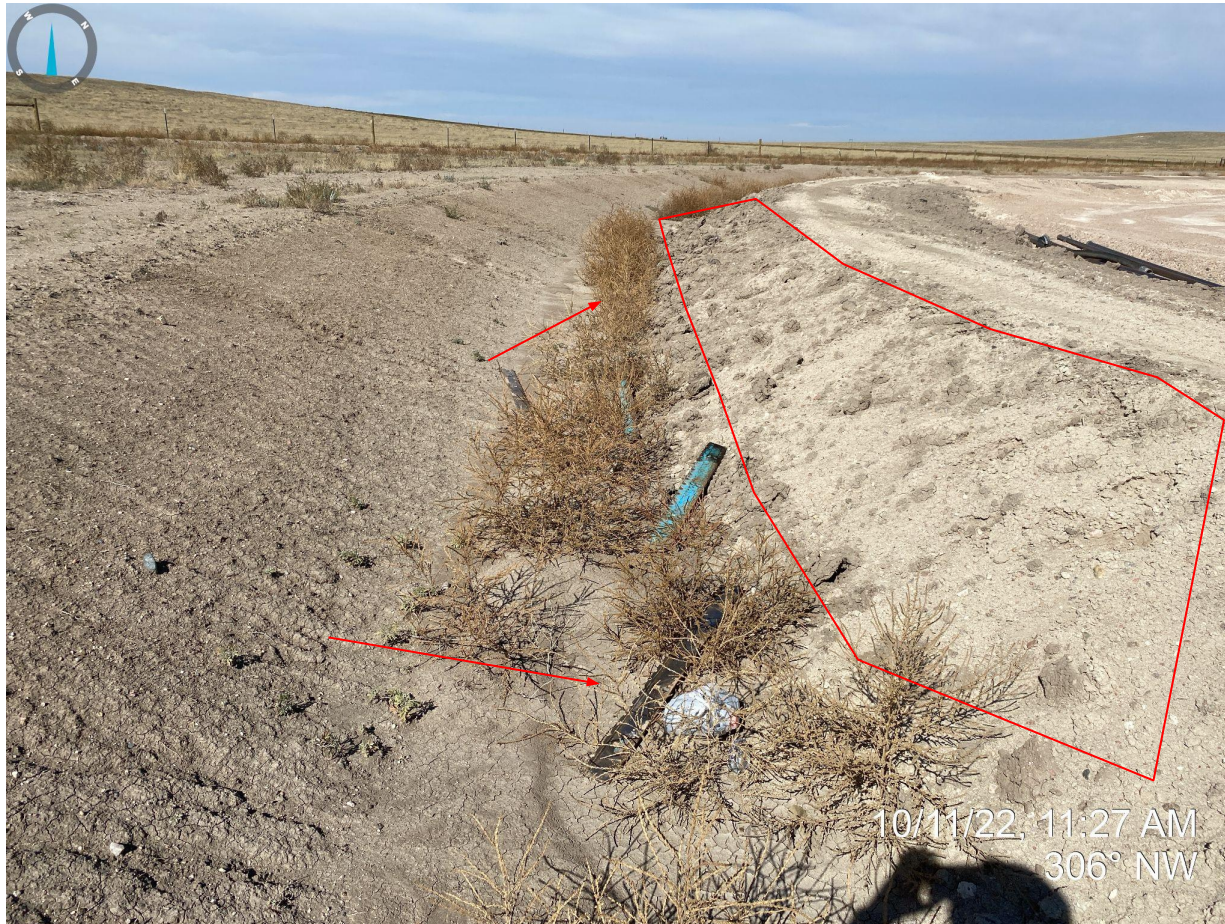


Photo 11. Taken from southwest portion of location, facing northwest. See comments in photo 9.

Inspection Photos
Location Name: Bashor 9-60 27B Pad
Location ID: 455657



Photo 12. Taken from southwest portion of location, facing southeast. Unused pipe stored on location.

Inspection Photos
Location Name: Bashor 9-60 27B Pad
Location ID: 455657



Photo 13. Taken from the western portion of location, facing north. Photo illustrates ditch BMP is filled with sediment and annual weedy vegetation.

Inspection Photos
Location Name: Bashor 9-60 27B Pad
Location ID: 455657



Photo 14. Taken from northwest corner, facing east. Photo illustrates interim areas have failed to revegetate with bare soil and annual weedy vegetation observed.

Inspection Photos
Location Name: Bashor 9-60 27B Pad
Location ID: 455657



Photo 15. Taken from northeast corner, facing west. See comments in photo 14.