

Well Header

Surface UWI 0512332418	Business Unit Rockies	Gov Auth Dist	Prod Tree Loc Land
Original RKB (ft) 4,785.00	Orig. KB to Gnd (ft) 13.00	Orig. Spud Date 6/15/2011	Abandon Date

Comment
DV TOOL @ 5812', DRILLED OUT 6/20/2011
3 7/8" CONE BIT & 1/2 OF PUMP OFF BIT SUB @ 8096.93' KB

Directions To Well
WCR 47 & WCR 38, S 0.4, W 0.3, SW 0.2, S 0.2, SW 0.2, S 0.2 INTO LOCATION.

Congressional Location

Quarter 3 SE	Quarter 4 NW	Section 11	Twnshp 3	Twnshp N/S N	Range 65	Rng E/W D W
-----------------	-----------------	---------------	-------------	-----------------	-------------	----------------

Bottom Hole Legal Location

Bottom Hole Legal Location
SENE, SEC. 11, T3N-R65W

Plug Back Total Depths

Date	PBTD (ftKB)	Method	Com
6/20/2011	8,106	CASING TALLY	LATCH DOWN COLLAR
6/20/2011	5,812	CASING TALLY	DRILLED OUT STAGE TOOL 7/20/11
7/21/2011	8,095	TUBING TALLY	CLEAN OUT W/ BIT AND SCRAPER
7/21/2011	8,095	CASED HOLE LOG	????? - DEPTH LOGGER VS FILL???
5/9/2012	8,097	TAG	C/O W/N2 P/S 15' IN 266.IT

Wellbore Sections

Section Des	Hole Size (in)	Act Top (ftKB)	Act Btm (ftKB)
SURFACE PRODUCTION	12 1/4 7 7/8	13.0 755.0	755.0 8,178.0

Zone Statuses

Zone Name	Status Date	Status	Fluid Type	Job	Prod Method
NIORARA	8/31/2011	PR		DRILLING/C	
CODELL	8/31/2011	PR		DRILLING/C	
LSAND	8/31/2011	PR		DRILLING/C	

Casing Strings

Surface, Planned?-N, 745ftKB

Csg Des	Run Date	OD (in)	W/Len	Grade	Top Dept	Set Dept
Surface	6/16/2011	8 5/8	24.00	J-55	13.2	745

Production Casing, Planned?-N, 8151ftKB

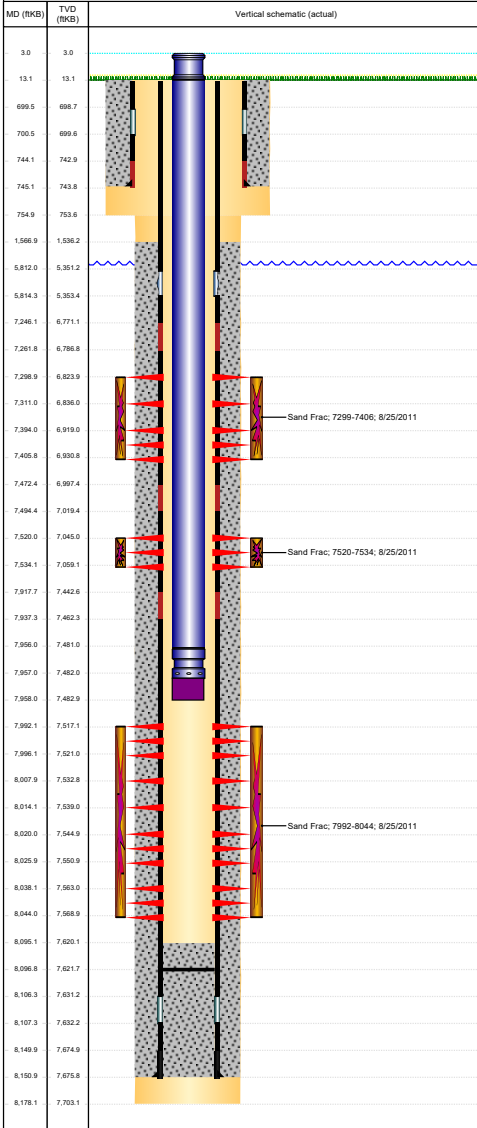
Csg Des	Run Date	OD (in)	W/Len	Grade	Top Dept	Set Dept
Production Casing	6/20/2011	4 1/2	11.60	M-80	13.1	8151

Cement

Description	Top (ftKB)	Btm (ftKB)
SURFACE CASING CEMENT	13.0	745.0
PRODUCTION CASING CEMENT	1,567.0	8,151.0

Tubing Strings

Tubing Components



Logs				
Date	Type	Depth Top (MD) (ftKB)	Btm (ftKB)	
6/19/2021	SPECTRAL DENSITY/Pe/DSN NEUTRON/SP/ARRAY SPECTRAL GAMMA RAY CBL/CCL/GR	741	7,718.0	
7/21/2021	SPECTRAL GAMMA RAY	7,050	7,663.0	
8/19/2021	CBL/CCL/GR	700	2,047.0	

Perforation Data					
Linked Zone	Explosive Type	Sum of Entered Shot Total	Top (ftKB)	Btm (ftKB)	Date
NIORBARA, Original Hole	B	24	7,299.0	7,311.0	8/25/2011
NIORBARA, Original Hole	C	24	7,394.0	7,406.0	8/25/2011
CODELL, Original Hole		56	7,520.0	7,534.0	8/25/2011
J SAND, Original Hole		16	7,992.0	7,996.0	7/22/2011
J SAND, Original Hole		24	8,008.0	8,014.0	7/22/2011
J SAND, Original Hole		24	8,020.0	8,026.0	7/22/2011
J SAND, Original Hole		24	8,038.0	8,044.0	7/22/2011
Total (Sum)		192			

Stimulation Intervals			
Interval	Start Date	Primary Job Type	Zone
1	8/25/2011	Complete	J SAND, Original Hole

Technical Result	Tech Result Details	Tech Result Note
Success	According to Plan	

Comment
 (J-SAND): REVERSE STEP RATE RESULTS: PO - 87. NWB FRIC - 334 PSI. PERF FRIC - 29 PSI. ISIP - 1897 PSI. PROBLEMS OPENING A GATE ON THE MOUNTAIN MOVER RESULTED IN NOT PUMPING 20K LBS OF OTTAWA 20/40 DURING 4 PSA STG. OTHERWISE TREATMENT WENT WELL. POST ISIP - 2792 PSI. AVG VISC - 18.59 CP. AVG TEMP - 78.92F. AVG PH - 10.22.

Interval	Start Date	Primary Job Type	Zone
1	8/25/2011	Complete	CODELL, Original Hole

Technical Result	Tech Result Details	Tech Result Note
Success	According to Plan	

Comment
 (CODELL): REVERSE STEP RATE RESULTS: PO - 55. NWB FRIC - 185 PSI. PERF FRIC - 16 PSI. ISIP - 3371 PSI. SHUT IN WH AFTER 5 MIN MOMENTARILY TO WORK ON PRESSURE TRANSDUCER. TREATMENT WENT WELL. POST ISIP - 3618 PSI. AVG NOLTE - 0.08. AVG VISC - 19.3 CP. AVG TEMP - 80.06F. AVG PH - 10.27.

Interval	Start Date	Primary Job Type	Zone
2	8/25/2011	Complete	NIORBARA, Original Hole

Technical Result	Tech Result Details	Tech Result Note
Success	According to Plan	

Comment
 (NIORBARA B&C): ISIP - 3494 PSI. TREATMENT WENT WELL. POST ISIP - 3501 PSI. AVG VISC - 16.86 CP. AVG TEMP - 79.58F. AVG PH - 10.36.