

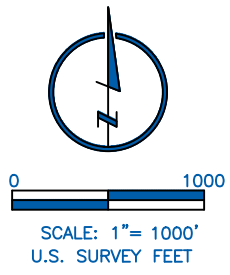
LAND SURVEYOR'S CERTIFICATION
 LAMP RYNEARSON, INC. OF FT. COLLINS, COLORADO HAS, IN ACCORDANCE WITH A REQUEST FROM NATHAN BENNETT OF EXTRACTION OIL & GAS, DETERMINED THE SURFACE LOCATION OF THE WELL DESIGNATED AS WARBLER 13W-27-07 TO BE 1349' FROM THE SOUTH LINE AND 1435' FROM THE EAST LINE OF SECTION 13, TOWNSHIP 1 SOUTH, RANGE 66 WEST OF THE 6TH P.M., ADAMS COUNTY, COLORADO.



MICHAEL GERARD STRATTON COLORADO PLS 38621
 DATE OF SURVEY: 12/08/2021 (SECTION CONTROL)
 DATE OF SURVEY: 04/08/2019 (WELL LOCATION)

SURFACE POINT			LANDING POINT/BEGIN HORIZONTAL COMPLETION ZONE				BOTTOM HOLE/END HORIZONTAL COMPLETION ZONE				
1349'	FSL	1435'	FEL	1086'	FNL	860'	FWL	1091'	FNL	2185'	FEL

SURFACE POINT				LANDING POINT		BOTTOM HOLE		
LATITUDE	LONGITUDE	ELEVATION	PDOP	OPERATOR	LATITUDE	LONGITUDE	LATITUDE	LONGITUDE
39.961600	-104.719689	5081	1.437	J.PARKS	39.969326	-104.730307	39.969358	-104.778792



- LEGEND**
- ◆ COMPUTED ALIQUOT CORNER
 - ⊙ ALIQUOT CORNER
 - ⊕ BOTTOM HOLE
 - ⊕^{WC} ALIQUOT WITNESS CORNER
 - △ LANDING POINT
 - ⊙ PROPOSED WELL
 - A.C. ALUMINUM CAP
 - R.B. RANGE BOX
 - CONC. CONCRETE
 - I.C.V.B. IRRIGATION CONTROL VALVE BOX

- NOTES:**
- DISTANCES ARE MEASURED PERPENDICULAR TO NEAREST SECTION LINE AND ARE SHOWN ON THE SAME SIDE OF THE SECTION LINE WHERE THE WELL IS LOCATED.
 - THIS MAP DOES NOT REPRESENT A MONUMENTED BOUNDARY SURVEY. SIXTEENTH CORNER LOCATIONS ARE COMPUTED, UNLESS OTHERWISE NOTED.
 - BOTTOM HOLE LOCATIONS AND HORIZONTAL COMPLETION ZONE PROVIDED BY OTHERS.
 - ALL REBAR AND CAPS ARE MEASURED IN INCHES.
 - ELEVATIONS ARE BASED ON THE NORTH AMERICAN VERTICAL DATUM OF 1988 AS MEASURED BY GNSS OBSERVATIONS USING GEOID 12A.

BASIS OF BEARING:
 THE SOUTH LINE OF THE SOUTHEAST QUARTER OF SECTION 13-T1S-R66W BEARS S89°28'40"W FOR 2637.03 FEET BETWEEN THE SOUTHEAST CORNER OF SECTION 13, MONUMENTED WITH A #6 REBAR WITH 2-1/2" ALUMINUM CAP STAMPED "PLS 28285" AND THE SOUTH QUARTER CORNER OF SECTION 13, MONUMENTED WITH A 2-1/2" PIPE WITH 3-1/4" BRASS CAP STAMPED "PLS 16415", BASED ON THE COLORADO STATE PLANE COORDINATE SYSTEM, NORTH ZONE, NORTH AMERICAN DATUM OF 1983(2011).

LAMP RYNEARSON

4715 INNOVATION DR., STE. 100
 FORT COLLINS, CO 80525
 970.226.0342
 LampRynearson.com

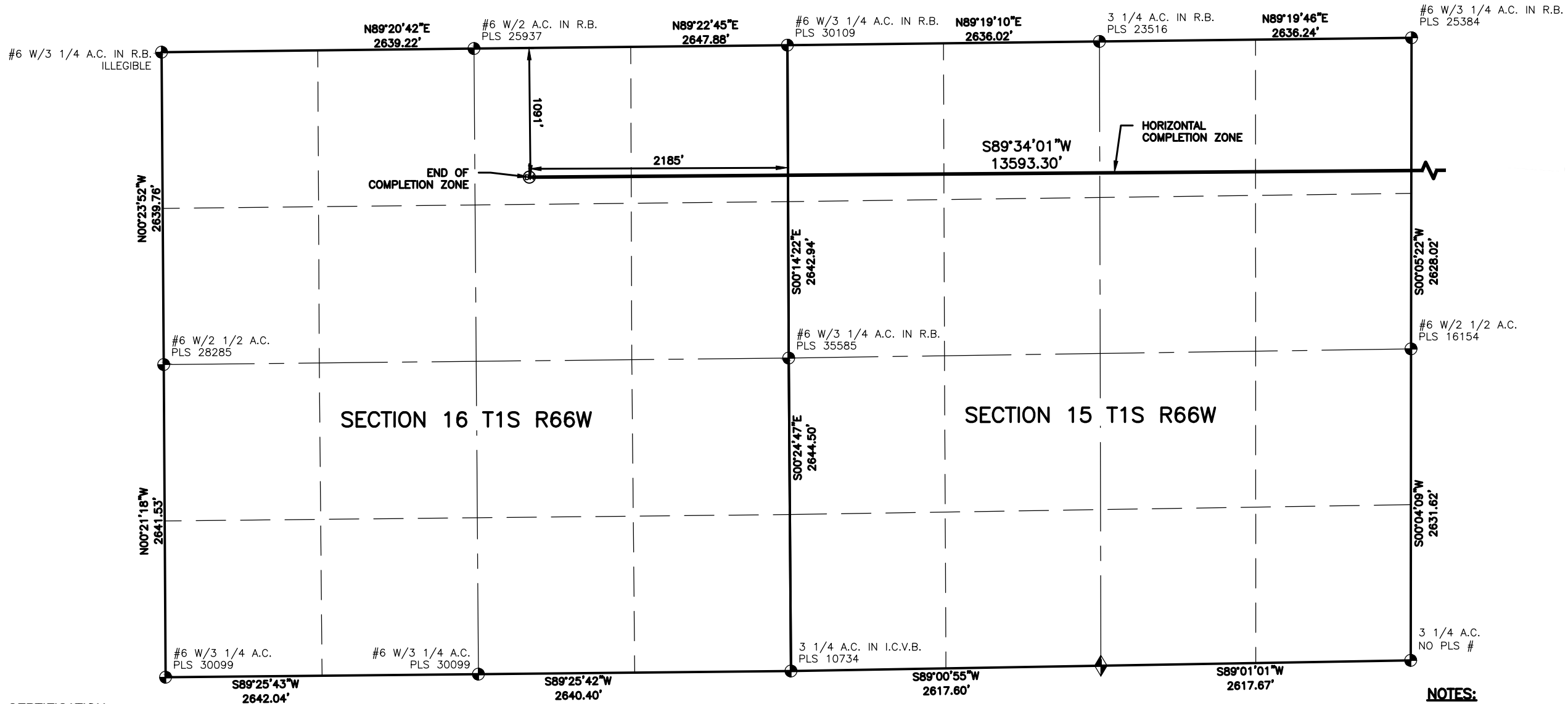


DESIGNER / DRAFTER
 JAC
REVIEWER
 MGS
PROJECT NUMBER
 0218002.14
DATE
 10/12/2022
SURFACE LOCATION
 NW/4, SE/4 SEC 13 T1S R66W
BOOK AND PAGE

WELL LOCATION PLAT

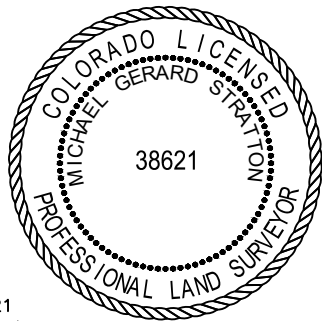
WARBLER 13W-27-07

I:\Engineering\0218002.14 XOG - Warbler SURVEY\DRAWINGS\EXHIBITS\2022-WELL PLATS\WARBLER_13W-27-07.dwg, 10/12/2022, 2:43:04 PM, USHUA, A. CROAK, LAMP, RYNEARSON



LAND SURVEYOR'S CERTIFICATION

LAMP RYNEARSON, INC. OF FT. COLLINS, COLORADO HAS, IN ACCORDANCE WITH A REQUEST FROM NATHAN BENNETT OF EXTRACTION OIL & GAS, DETERMINED THE SURFACE LOCATION OF THE WELL DESIGNATED AS WARBLER 13W-27-07 TO BE 1349' FROM THE SOUTH LINE AND 1435' FROM THE EAST LINE OF SECTION 13, TOWNSHIP 1 SOUTH, RANGE 66 WEST OF THE 6TH P.M., ADAMS COUNTY, COLORADO.



MICHAEL GERARD STRATTON COLORADO PLS 38621
 DATE OF SURVEY: 12/08/2021 (SECTION CONTROL)
 DATE OF SURVEY: 04/08/2019 (WELL LOCATION)

SURFACE POINT			LANDING POINT/BEGIN HORIZONTAL COMPLETION ZONE				BOTTOM HOLE/END HORIZONTAL COMPLETION ZONE				
1349'	FSL	1435'	FEL	1086'	FNL	860'	FWL	1091'	FNL	2185'	FEL

SURFACE POINT				LANDING POINT		BOTTOM HOLE		
LATITUDE	LONGITUDE	ELEVATION	PDOP	OPERATOR	LATITUDE	LONGITUDE	LATITUDE	LONGITUDE
39.961600	-104.719689	5081	1.437	J.PARKS	39.969326	-104.730307	39.969358	-104.778792



0 1000
 SCALE: 1" = 1000'
 U.S. SURVEY FEET

LEGEND

- ◆ COMPUTED ALIQUOT CORNER
- ⊙ PROPOSED WELL
- ⊕ ALIQUOT CORNER
- A.C. ALUMINUM CAP
- ⊗ BOTTOM HOLE
- R.B. RANGE BOX
- ⊕^{WC} ALIQUOT WITNESS CORNER
- CONC. CONCRETE
- △ LANDING POINT
- I.C.V.B. IRRIGATION CONTROL VALVE BOX

NOTES:

- DISTANCES ARE MEASURED PERPENDICULAR TO NEAREST SECTION LINE AND ARE SHOWN ON THE SAME SIDE OF THE SECTION LINE WHERE THE WELL IS LOCATED.
- THIS MAP DOES NOT REPRESENT A MONUMENTED BOUNDARY SURVEY. SIXTEENTH CORNER LOCATIONS ARE COMPUTED, UNLESS OTHERWISE NOTED.
- BOTTOM HOLE LOCATIONS AND HORIZONTAL COMPLETION ZONE PROVIDED BY OTHERS.
- ALL REBAR AND CAPS ARE MEASURED IN INCHES.
- ELEVATIONS ARE BASED ON THE NORTH AMERICAN VERTICAL DATUM OF 1988 AS MEASURED BY GNSS OBSERVATIONS USING GEOID 12A.

BASIS OF BEARING:

THE SOUTH LINE OF THE SOUTHEAST QUARTER OF SECTION 13-T1S-R66W BEARS S89°28'40"W FOR 2637.03 FEET BETWEEN THE SOUTHEAST CORNER OF SECTION 13, MONUMENTED WITH A #6 REBAR WITH 2-1/2" ALUMINUM CAP STAMPED "PLS 28285" AND THE SOUTH QUARTER CORNER OF SECTION 13, MONUMENTED WITH A 2-1/2" PIPE WITH 3-1/4" BRASS CAP STAMPED "PLS 16415", BASED ON THE COLORADO STATE PLANE COORDINATE SYSTEM, NORTH ZONE, NORTH AMERICAN DATUM OF 1983(2011).

LAMP RYNEARSON

4715 INNOVATION DR., STE. 100
 FORT COLLINS, CO 80525
 970.226.0342
 LampRyNearson.com



DESIGNER / DRAFTER
 JAC
 REVIEWER
 MGS
 PROJECT NUMBER
 0218002.14
 DATE
 10/12/2022
 SURFACE LOCATION
 NW/4, SE/4 SEC 13 T1S R66W
 BOOK AND PAGE

WELL LOCATION PLAT

WARBLER 13W-27-07