

Cement Verification Report - Cementer's Well Service, Inc.

P.O. BOX 336220 • GREELEY, CO 80633 • (970) 353-7299 • FAX (970) 353-7712



COGCC Operator Guidance RULE #308.A.B(2)A.ii

CLIENT: PDC Energy	Cementer's FIELD TICKET #	3003343-D
--------------------	------------------------------	-----------

Requested Operator Guidance:

Well Name & Number	Lease	Stugart	Well No.	13NA
Well API Number	05-123-51261			
Job Date	7/17/22	Time on	10:00	24 hr time
Job Type	New Well Surface			
Cementing Company	Cementer's Well Service, Inc	Contact	Nate Kvamme - 303-324-4296	
Ambient conditions	clear	97	temp deg F	
Slurry Description				
a) Purpose	Surface - 9 5/8" 36# CSG, 13 1/2" hole			
b) Cement Class	ASTM C150 Type II			
c) Cement Yield	1.61	cuft / sk		
d) Cement Density	13.9	PPG		
e) Number of sks	806	sks (94# equiv)		
f) Mix Fluid Type				
Water / Cement	8.5	Gal / sk		
g) Slurry mixed	230.9	BBLs slurry		
h) Additives used	1.5%	CaCl2	3.0%	Bentonite
Total Water Used	316.6	BBLs H2O		
i) Displacement Fluid Vol	123.4	BBLs H2O		
j) Method of Placement				
k) Set Depth	1,639	feet (ft)		
l) Stage tool depth	n/a			
m) Float Collar Depth	1,597	feet (ft)		
n) Designed Top of Cement	n/a	to surface		
o) Centralizer depths	0	feet (ft)		

Charts - (pressure, density, pump rate)

Landed Plug @ 1688 psi Final Lift Pressure @ 300 psi

Cement Density (as weighed during job) @ 13.9 PPG

Job notes

a) Plug down	<div><div>Y</div><div>N</div></div>	Time	11:58	24 hr time
b) Floats held	<div><div>Y</div><div>N</div></div>		7/17/22	
c) Full Returns	<div><div>Y</div><div>N</div></div>	Lost Circulation	<div><div>Y</div><div>N</div></div>	
d) Cement to surface	<div><div>Y</div><div>N</div></div>	48.0	BBLs to surface	
e) If no returns, top off	n/a	BBLs		
f) Top off detail				
g) Additional Detail				

Cementer's Well Service, Inc.

P.O. BOX 336220 • GREELEY, CO 80633 • (970) 353-7299 • FAX (970) 353-7712



PDC Energy

Surface Cement Job Graph & Casing Pressure Test

COMPANY DETAILS

Date	7/17/22	API #	05-123-51261	Well No.	13NA
County	Weld	State	CO	Lease	Stugart

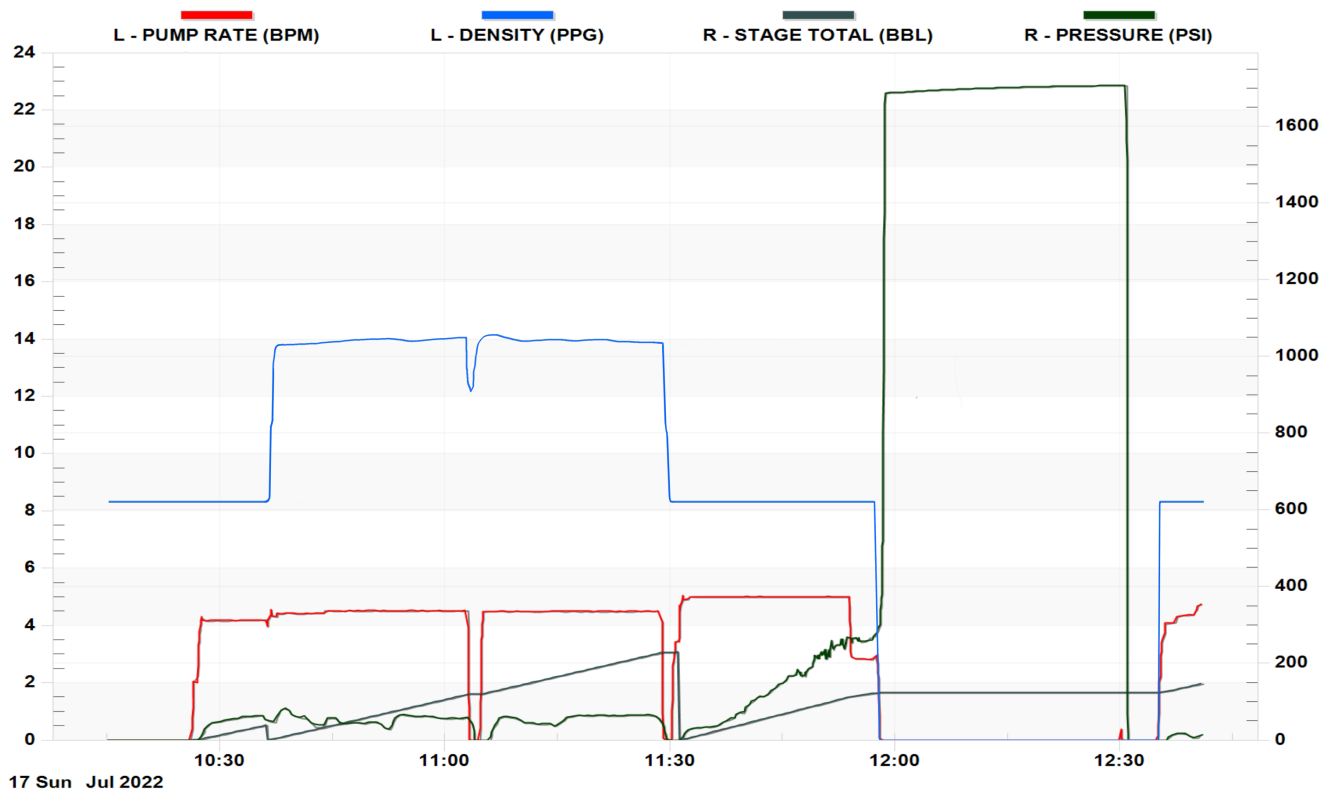
Client PDC Energy

Contact / email

JOB DETAILS

TIME ON	10:00	24 hr	Depth	1,649	ft.	Pressure Test @	1,688	psi
START TIME	10:15	7/17/22	Bottom of Surface	1,639	ft.	10 min	1,698	psi
END TIME	12:41	7/17/22	Plug Landed @	1,597	ft.	20 min	1,703	psi
			Plug Landed @	11:58	24 hr	30 min	1,707	psi

SUMMARY GRAPH





Centralizer Depths

Well Name: STUGART 13NA

Surface, Set Depth: 1,639.3ftKB

API 05123512610000		Surface Legal Location SENW 20-5N-66W		Field Name Wattenberg		State CO		Well Configuration Type Horizontal	
Ground Elevation (ft) 4,885.00	Original KB Elevation (ft) 4,898.00	KB-Ground Distance (ft) 13.00		Spud Date	Rig Release Date	On Production Date		Abandon Date	

Casing Run Tally

Run #	Ref #	Item Des	OD (in)	Wt (lb/ft)	Grade	Run?	Len (ft)	Centralized?	Ext Jwlry	Connections	Top (ftKB)	Cum Len (ft)
2		Casing joints	9 5/8	36.00	J-55	Yes	43.22	Yes		LT&C	1,594.2	45.07
3		Casing joints	9 5/8	36.00	J-55	Yes	43.23	Yes		LT&C	1,551.0	88.30
4		Casing joints	9 5/8	36.00	J-55	Yes	43.25	Yes		LT&C	1,507.8	131.55
8		Casing joints	9 5/8	36.00	J-55	Yes	43.22	Yes		LT&C	1,334.8	304.47
12		Casing joints	9 5/8	36.00	J-55	Yes	43.22	Yes		LT&C	1,162.0	477.33
16		Casing joints	9 5/8	36.00	J-55	Yes	43.22	Yes		LT&C	990.5	648.80
20		Casing joints	9 5/8	36.00	J-55	Yes	42.22	Yes		LT&C	822.4	816.93
24		Casing joints	9 5/8	36.00	J-55	Yes	42.20	Yes		LT&C	653.5	985.84
28		Casing joints	9 5/8	36.00	J-55	Yes	42.10	Yes		LT&C	484.8	1,154.54
32		Casing joints	9 5/8	36.00	J-55	Yes	42.19	Yes		LT&C	316.0	1,323.32
36		Casing joints	9 5/8	36.00	J-55	Yes	42.22	Yes		LT&C	147.1	1,492.20
38		Casing joints	9 5/8	36.00	J-55	Yes	42.20	Yes		LT&C	62.7	1,576.60