

Interim Reclamation and Stormwater Inspection

Date: 10/11/2022

Operator: MALLARD EXPLORATION LLC - 10670

Location ID: 454414

Inspection Document #: 696105525

Weld County, CO

SESW Section 35 T9N R60W

Dylan Edwardson
Reclamation Specialist, COGCC



COLORADO
Oil & Gas Conservation
Commission

Department of Natural Resources

Inspection Photos
Location Name: Pintail Pad
Location ID: 454414



Photo 1. Taken from southwest portion of location, facing north. Photo illustrates annual weedy vegetation (e.g. kochia and russian thistle) was observed throughout the interim areas. Some desirable germination was observed in the drill rows (see Photo 9).

Inspection Photos
Location Name: Pintail Pad
Location ID: 454414



Photo 2. Taken from topsoil stockpile on the west end of location, facing north. See comments in Photo 1.

Inspection Photos
Location Name: Pintail Pad
Location ID: 454414



Photo 3. Taken from west portion of location, facing south. Annual weedy vegetation observed next to flowlines/meter shed location.

Inspection Photos
Location Name: Pintail Pad
Location ID: 454414



Photo 4. See comments in Photo 3.

Inspection Photos
Location Name: Pintail Pad
Location ID: 454414



Photo 5. Taken from central, northern portion of location, facing southeast. See comments in Photo 1.

Inspection Photos
Location Name: Pintail Pad
Location ID: 454414



Photo 6. Taken from center portion of location, facing northeast. See comments in Photo 1.

Inspection Photos
Location Name: Pintail Pad
Location ID: 454414



Photo 7. Taken from eastern portion, facing north. See comments in Photo 1.

Inspection Photos
Location Name: Pintail Pad
Location ID: 454414

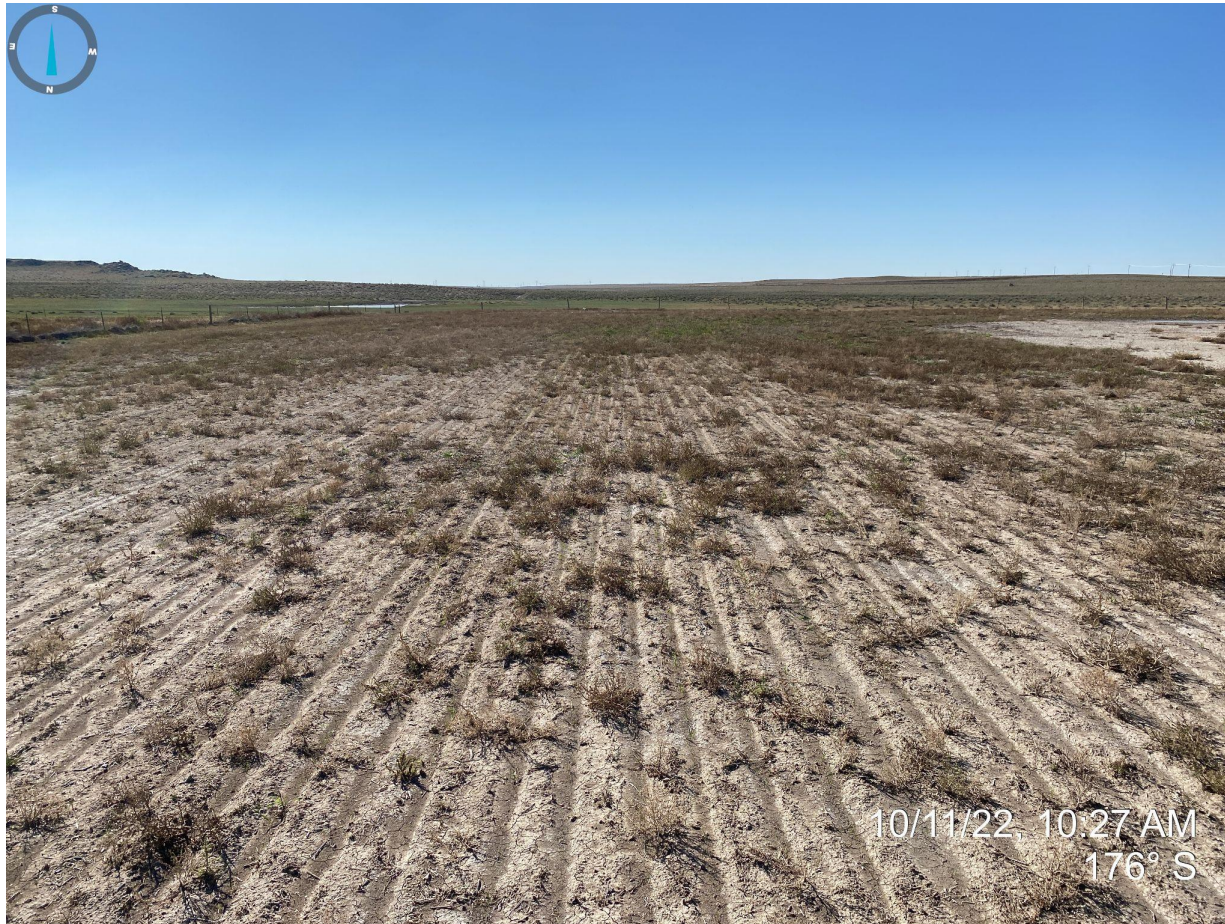


Photo 8. Taken from eastern portion , facing south. See comments in Photo 1.

Inspection Photos
Location Name: Pintail Pad
Location ID: 454414



Photo 9. Close up photo of desirable germination observed in drill roads, taken on the eastern portion of the location. Key for reference scale; red arrows indicate germination.