

Tank Battery Closure Checklist

COGCC Rule 911.a.(4) Environmental Site Closure Assessment Field Form

Additional attachments (optional):		Pit Closure		Wellhead Closure(2)	5-9-22	Flowline Closure (2)	6-10-22, 6-14-22	Partially Buried Vault Closure	6-9-22
Site Name & COGCC Facility Number: 329775		Date: Name: UPRC T4N-R67W-S23 Tank Battery						Remediation Project #: 22738	
Associated Wells: (25) 05-123-17826, 17827		Age of Site: Years			Date: 6-9-22			Number of Photos Attached: 5	
Location: (GPS coordinates of southeaster berm) 40.304722 / -104.867188								Estimated Facility Size (acres):	

General Condition of Site: (General observations regarding housekeeping, corrosion, waste management, etc.)

Good condition

USCS Soil Type: SC Estimated Depth to Groundwater: ~15-25'

Hydrocarbon Impacted Soils / Spills: (Note estimated size and if impact appears to be surficial or extends to an unknown depth)

None observed

Salt Crusted Soils or Impacted Vegetation: (Note estimated size and if impact appears to be surficial or extends to an unknown depth)

None observed

Tanks

Tank Contents	Crude								
Size (barrels)	300								
Age	Years								
Construction Material	Steel								
Tank type	AST								
Visual Integrity	Good - per crew								
Condition of tank	Good								
PID Readings	N/A								
Soil impacts present at valves or hatches?	None observed								
PID Readings	1.5								
Sample taken? Location/ Sample ID#	TB-SS-01								
Photo Number(s)	See photolog								

Other observations regarding tanks:

Separators

Separator size									
Vertical or Horizontal	Horizontal								
Age	Years								
Soil impacts	None observed								
PID Readings	2.4 2.0								
Sample taken? Location/ Sample ID#	TB-SS-02 TB-SS-03								
Photo Number(s)	See photolog								

Other observations regarding separators

Third Party Equipment

Type	Meter	House							
Age	Years								

Third Party																	
Removal Date	TBD																
Sample taken?	TB-SS-04																
PID Readings	1.9																
Photo Number(s)	See photolog																
Other Facility Equipment																	
Equipment type	VOC Burner																
Equipment Condition	Good - Per crew																
Age	years																
Soil impacts	None observed																
PID Readings	1.8																
Sample taken?	TB-SS-05																
Photo Number(s)	See photolog																
Other observations regarding other facility or third party equipment:																	
Summary																	
Was impacted soil identified?																	
(No)		Yes - less than 10 cubic yards				Yes - more than 10 cubic yards											
Total number of samples field screened:		5				Total number of samples collected: 5											
Highest PID Reading:		2.4				Total number of samples submitted to lab for analysis: 2											
If more than 10 cubic yards of impacted soil were observed:																	
Vertical extent:		N/A				Estimated spill volume:											
Lateral extent:						Volume of soil removed:											
Is additional investigation required?																	
Was groundwater encountered during the investigation?																	
(No)		Yes - not impacted or in contact with impacted soils				Yes - groundwater impacted and/or in contact with impacted soils											
Measured depth to groundwater:						Was remedial/groundwater removal conducted?		Yes	No								
Date Groundwater was encountered:						Commencement date of removal:											
Seen on groundwater?		Yes	No														
Free product observed?		Yes	No														
Total number of samples collected:						Total Volume of groundwater removed:											
Total number of samples submitted to lab for analysis:																	

Buried or Partially Buried Vessel Closure Checklist

COGCC Rule 911.a.(4) Environmental Site Closure Assessment Field Form

Additional attachments (optional):		Pit Closure		Wellhead Closure(2)	5-9-22	Flowline Closure(2)	6-10-22, 6-14-22	Tank Battery Closure	6-9-22
Site Name & COGCC Facility Number: 329775		Date: Name: UPRC T4N-R67W-S23 Tank Battery						Remediation Project #: 22738	
Associated Wells: (2) 05-123-17826, 17827		Age of Site: years		Date: 6-9-22			Number of Photos Attached: 2		
Location: (GPS coordinates of vault or southeastern tank berm for multiple) 40.304722 / -104.867188							Estimated Facility Size (acres):		
General Condition of Site: (General observations regarding housekeeping, corrosion, waste management, etc.) <div style="text-align: center; font-size: 1.2em;">Good condition</div>									
USCS Soil Type: SC					Estimated Depth to Groundwater: ~15-25'				
Hydrocarbon Impacted Soils / Spills: (Note estimated size and if impact appears to be surficial or extends to an unknown depth) <div style="text-align: center; font-size: 1.2em;">None observed</div>									
Salt Crusted Soils or Impacted Vegetation: (Note estimated size and if impact appears to be surficial or extends to an unknown depth) <div style="text-align: center; font-size: 1.2em;">None observed</div>									
Buried or Partially Buried Vessels									
Tank Contents	Produced	water							
Size (barrels)	80								
Age	years								
Construction Material	Concrete								
Visual Integrity	Good								
Condition of tank	Good								
PID Readings	N/A								
Condition of	Good								
PID Readings	1.8	2.2	2.4	1.1	1.4				
Sample taken? Location/Sample ID#	WV-SS-01	WV-SS-02	WV-SS-03	WV-SS-04	WV-FS-01				
Photo Number(s)	See photolog								
Other observations regarding partially buried vessels:									
Summary									
Was impacted soil identified? <div style="display: flex; justify-content: space-between;"> (No) Yes - less than 10 cubic yards Yes - more than 10 cubic yards </div>									
Total number of samples field screened: 5					Total number of samples collected: 5				
Highest PID Reading: 2.4					Total number of samples submitted to lab for analysis: 2				
If more than 10 cubic yards of impacted soil were observed:									
Vertical extent:					Estimated spill volume:				
Lateral extent:					Volume of soil removed:				
Is additional investigation required?									
Was groundwater encountered during the investigation? <div style="display: flex; justify-content: space-between;"> (No) Yes - not impacted or in contact with impacted soils Yes - groundwater impacted and/or in contact with impacted soils </div>									
Measured depth to groundwater:					Was remedial groundwater removal conducted? Yes No				
Date Groundwater was encountered:					Commencement date of removal:				
Sheen on groundwater? Yes No					Volume of groundwater removed prior to sampling:				
Free product observed? Yes No					Volume of groundwater removed post sampling:				
Total number of samples collected:					Total Volume of groundwater removed:				
Total number of samples submitted to lab for analysis:									



FIGURES

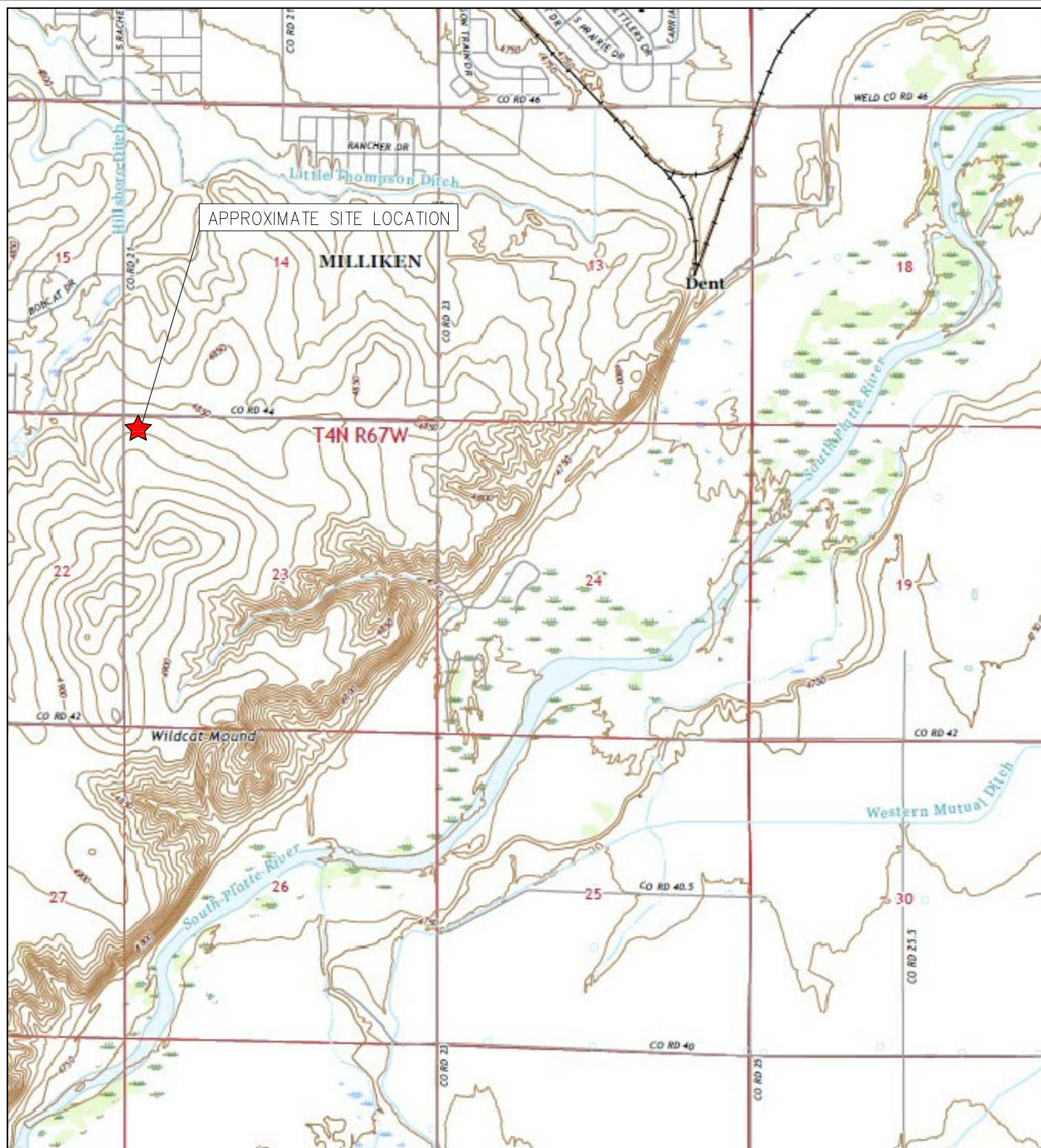
Figure 1: Topographic Site Location Map

Figure 2: Aerial Site Location Map

Figure 3: Soil Analytical Map

Figure 4: Polycyclic Aromatic Hydrocarbons Map

Figure 5: Metals in Soil Map



APPROXIMATE SITE LOCATION

TOPOGRAPHIC SITE LOCATION MAP
UPRC T4N-R67W-S23 TANK BATTERY
CLOSURE ASSESSMENT
40.304722 / -104.867188
NE¼ NW¼ SEC.23 T4N R67W 6PM
WELD COUNTY, COLORADO
LOCATION ID 329775
REMEDIAION # 22738

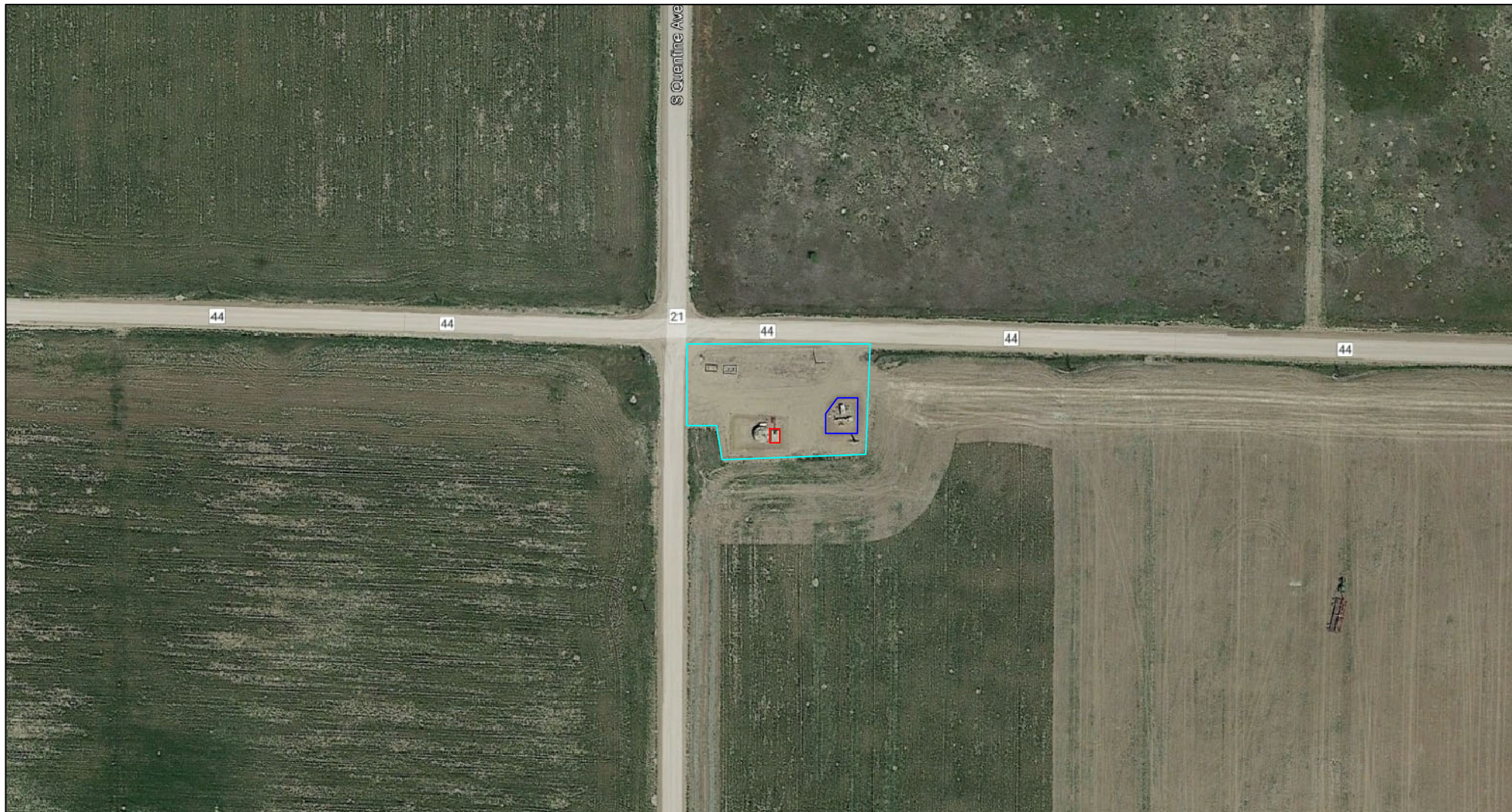


EAGLE
ENVIRONMENTAL
CONSULTING, INC.

8000 W 44th Ave, Wheat Ridge, CO 80033
Ph: 303-433-0479 • F: 303-325-5449

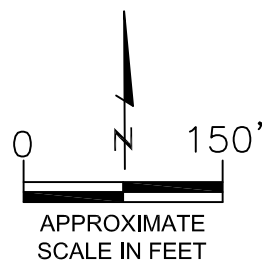
SOURCE: USGS 7.5 MINUTE TOPOGRAPHIC MAP
MILLIKEN, CO QUADRANGLE 2022

FIGURE 1



LEGEND

- FORMER UPRC T4N-R67W-S23 TANK BATTERY (DECOMMISSIONED)
- APPROXIMATE WATER VAULT LOCATION (REMOVED)
- SEPARATOR CONTAINMENT AREA (DECOMMISSIONED)



AERIAL SITE LOCATION MAP
 UPRC T4N-R67W-S23 TANK BATTERY
 CLOSURE ASSESSMENT
 40.304722 / -104.867188
 NE¼ NW¼ SEC.23 T4N R67W 6PM
 WELD COUNTY, COLORADO
 LOCATION ID 329775
 REMEDIATION # 22738

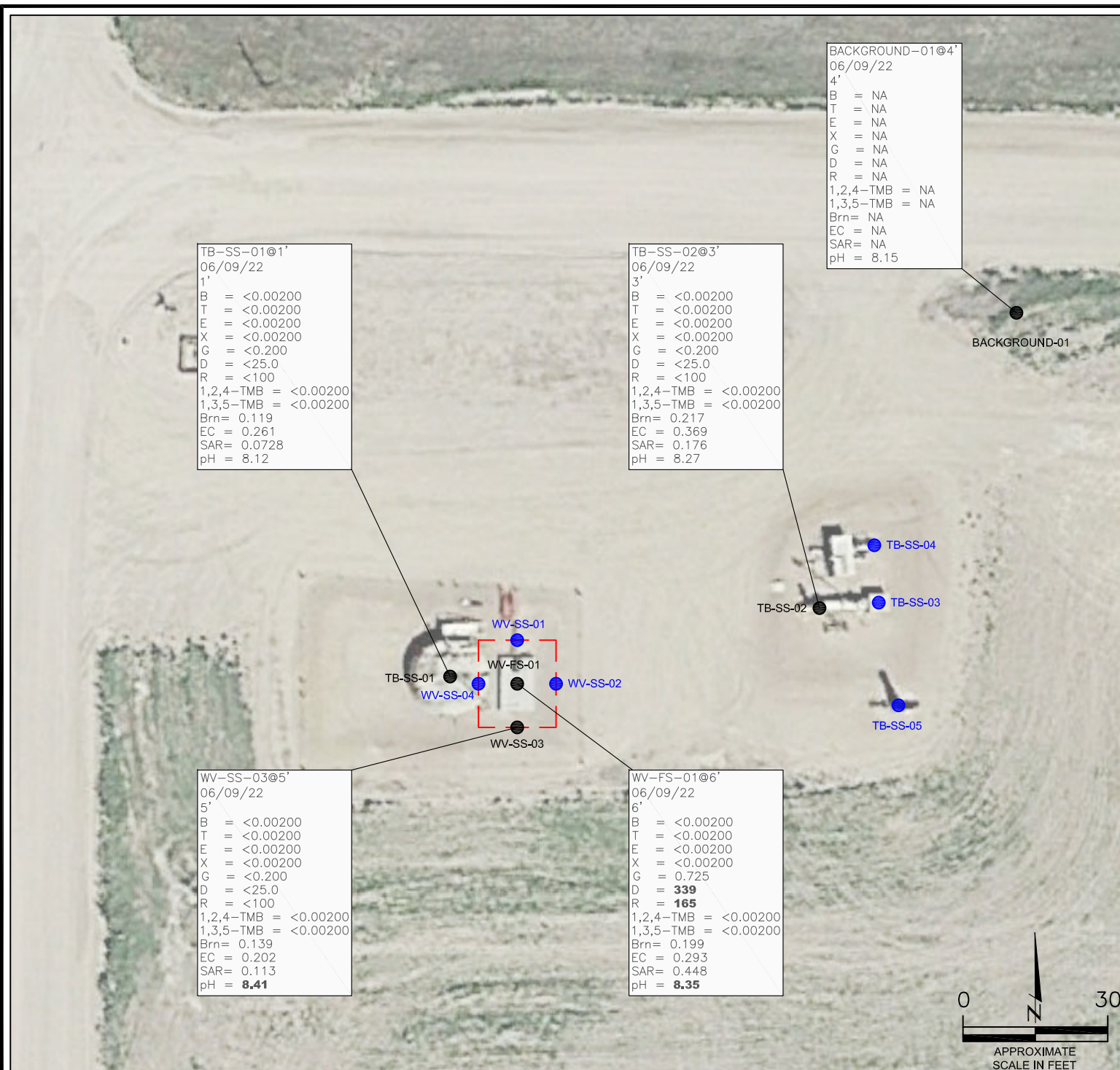
DATE: 06/27/22

FIG. NO.
2

DRAWN BY:
GEC



EAGLE
 ENVIRONMENTAL
 CONSULTING, INC.
 8000 W 44th Ave, Wheat Ridge, CO 80033
 Ph: 303-433-0479 • F: 303-325-5449



LEGEND

--- INITIAL ASSESSMENT BOUNDARIES

● APPROXIMATE LOCATION OF SOIL SAMPLES FIELD SCREENED, ONLY, WITH PHOTOIONIZATION DETECTOR

● APPROXIMATE LOCATION OF SOIL SAMPLES SUBMITTED FOR LABORATORY ANALYSIS

PARAMETERS

SAMPLE LOCATION
DATE
DEPTH (FEET)
B = BENZENE (mg/kg)
T = TOLUENE (mg/kg)
E = ETHYLBENZENE (mg/kg)
X = TOTAL XYLENES (mg/kg)
G = TPH-GRO (mg/kg)
D = TPH-DRO (mg/kg)
R = TPH-RRO (mg/kg)
1,2,4-TMB = 1,2,4 TRIMETHYLBENZENE (mg/kg)
1,3,5-TMB = 1,3,5 TRIMETHYLBENZENE (mg/kg)
Brn= BORON (mg/L)
EC = SPECIFIC CONDUCTANCE (mmhos/cm)
SAR= SODIUM ADSORPTION RATIO
pH = pH (pH UNITS)

mg/kg = MILLIGRAMS PER KILOGRAM
mg/L = MILLIGRAMS PER LITER
mmhos/cm = MILLIMHOS PER CENTIMETER

TPH-GRO = TOTAL PETROLEUM HYDROCARBONS - GASOLINE RANGE ORGANICS
TPH-DRO = TOTAL PETROLEUM HYDROCARBONS - DIESEL RANGE ORGANICS
TPH-RRO = TOTAL PETROLEUM HYDROCARBONS - RESIDUAL RANGE ORGANICS

NA = NOT ANALYZED

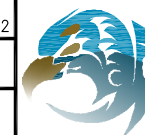
NOTES:
VALUES PRESENTED WITH A LESS THAN SYMBOL (<) DID NOT CONTAIN CONCENTRATIONS AT OR ABOVE LABORATORY DETECTION LIMITS

VALUES PRESENTED IN **BOLD** EXCEED COGCC TABLE 915-1 REGULATORY LIMITS

COGCC = COLORADO OIL AND GAS CONSERVATION COMMISSION

SOIL ANALYTICAL MAP
UPRC T4N-R67W-S23 TANK BATTERY
CLOSURE ASSESSMENT
40.304722 / -104.867188
NE¼ NW¼ SEC.23 T4N R67W 6PM
WELD COUNTY, COLORADO
LOCATION ID 329775
REMEDIATION # 22738

DATE:
06/27/22
DRAWN BY:
GEC
FIG.
NO. 3



EAGLE
ENVIRONMENTAL
CONSULTING, INC.
8000 W 44th Ave, Wheat Ridge, CO 80033
Ph: 303-433-0479 • F: 303-325-5449

TB-SS-01@1'
06/09/22
1'
ND = <0.00067
1-Methylnaphthalene = ND
2-Methylnaphthalene = ND
Acenaphthene = ND
Anthracene = ND
Benzo(a)anthracene = 0.000668
Benzo(a)pyrene = 0.00105
Benzo(b)fluoranthene = 0.00152
Benzo(k)fluoranthene = 0.000822
Chrysene = 0.00105
Dibenzo(a,h)anthracene = ND
Fluoranthene = 0.00255
Fluorene = ND
Indeno(1,2,3-CD)pyrene = 0.000985
Naphthalene = ND
Pyrene = 0.00237

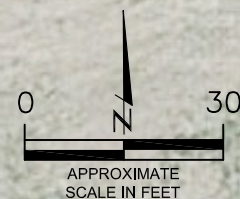
TB-SS-02@3'
06/09/22
3'
ND = <0.00067
1-Methylnaphthalene = ND
2-Methylnaphthalene = ND
Acenaphthene = ND
Anthracene = ND
Benzo(a)anthracene = ND
Benzo(a)pyrene = ND
Benzo(b)fluoranthene = ND
Benzo(k)fluoranthene = ND
Chrysene = ND
Dibenzo(a,h)anthracene = ND
Fluoranthene = ND
Fluorene = ND
Indeno(1,2,3-CD)pyrene = ND
Naphthalene = ND
Pyrene = ND

WV-SS-03@5'
06/09/22
5'
ND = <0.00067
1-Methylnaphthalene = ND
2-Methylnaphthalene = ND
Acenaphthene = ND
Anthracene = ND
Benzo(a)anthracene = ND
Benzo(a)pyrene = ND
Benzo(b)fluoranthene = ND
Benzo(k)fluoranthene = ND
Chrysene = ND
Dibenzo(a,h)anthracene = ND
Fluoranthene = ND
Fluorene = ND
Indeno(1,2,3-CD)pyrene = ND
Naphthalene = ND
Pyrene = ND

WV-FS-01@6'
06/09/22
6'
ND = <0.00067
1-Methylnaphthalene = **0.00723***
2-Methylnaphthalene = 0.00695
Acenaphthene = 0.0162
Anthracene = ND
Benzo(a)anthracene = 0.00194
Benzo(a)pyrene = ND
Benzo(b)fluoranthene = 0.00271
Benzo(k)fluoranthene = ND
Chrysene = 0.0066
Dibenzo(a,h)anthracene = ND
Fluoranthene = 0.00106
Fluorene = 0.0318
Indeno(1,2,3-CD)pyrene = ND
Naphthalene = 0.000586
Pyrene = 0.00576

TB-SS-01
WV-SS-01
WV-FS-01
WV-SS-02
WV-SS-03
WV-SS-04

TB-SS-02
TB-SS-03
TB-SS-04
TB-SS-05



LEGEND

- INITIAL ASSESSMENT BOUNDARIES
- SS-02 APPROXIMATE LOCATION OF SOIL SAMPLES FIELD SCREENED, ONLY, WITH PHOTOIONIZATION DETECTOR
- SS-02 APPROXIMATE LOCATION OF SOIL SAMPLES SUBMITTED FOR LABORATORY ANALYSIS

PARAMETERS

SAMPLE LOCATION
DATE SAMPLE COLLECTED
APPROXIMATE DEPTH
POLYCYCLIC AROMATIC HYDROCARBONS (PAHs)

NOTE:
CONCENTRATIONS PRESENTED IN mg/kg

mg/kg = MILLIGRAMS PER KILOGRAM

ND = NON-DETECT

NOTE:
VALUES PRESENTED WITH A LESS THAN SYMBOL (<) DID NOT CONTAIN CONCENTRATIONS AT OR ABOVE LABORATORY DETECTION LIMITS

VALUES PRESENTED IN **BOLD** EXCEED COGCC TABLE 915-1 REGULATORY LIMITS

VALUES PRESENTED WITH AN ASTERISK (*) EXCEED COGCC TABLE 915-1 GROUNDWATER SOIL SCREENING LEVELS

COGCC = COLORADO OIL AND GAS CONSERVATION COMMISSION

POLYCYCLIC AROMATIC HYDROCARBONS MAP

UPRC T4N-R67W-S23 TANK BATTERY
CLOSURE ASSESSMENT
40.304722 / -104.867188
NE¼ NW¼ SEC.23 T4N R67W 6PM
WELD COUNTY, COLORADO
LOCATION ID 329775
REMEDIATION # 22738

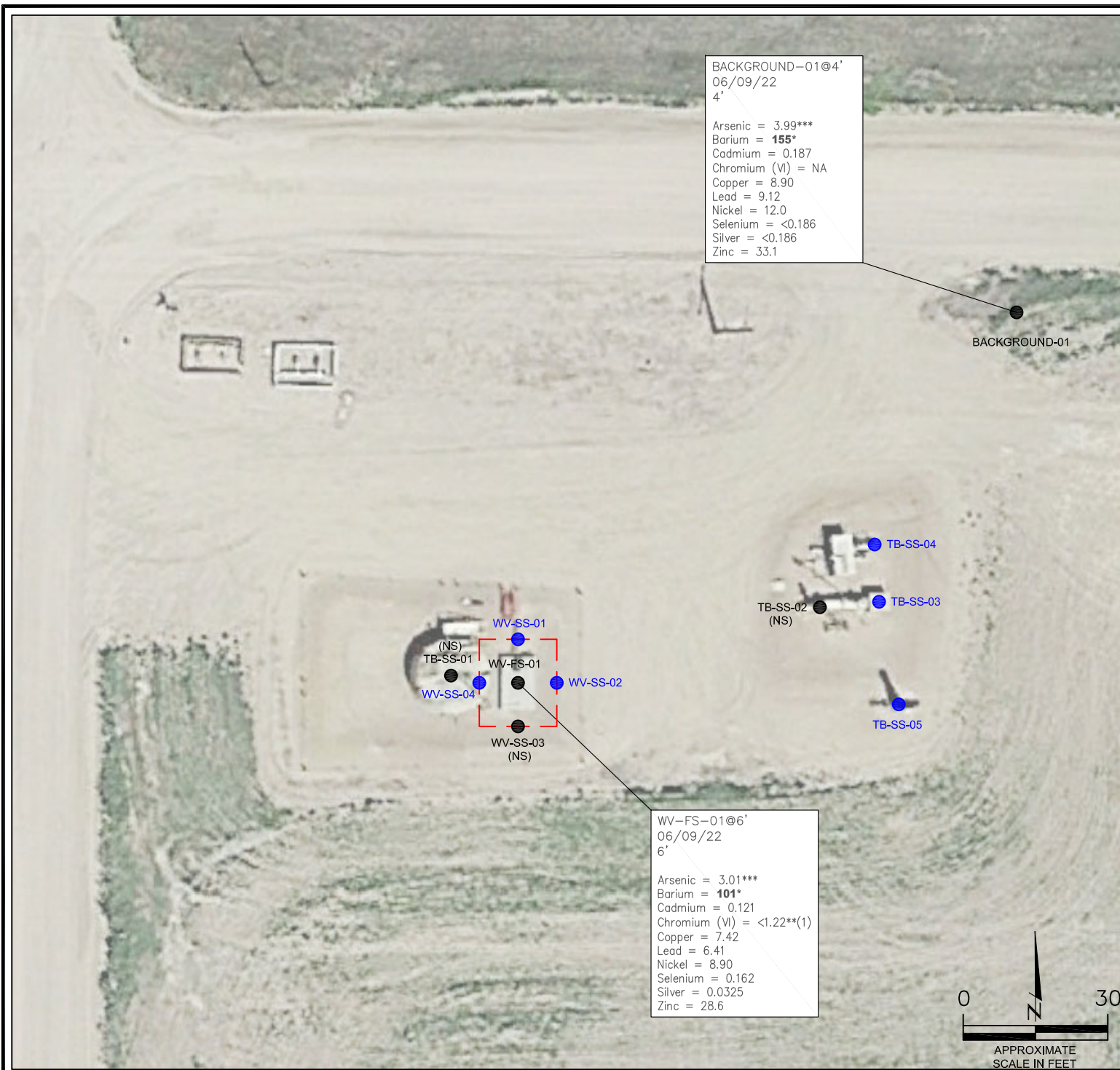
DATE:
06/27/22

DRAWN BY:
GEC

FIG.
NO. 4



EAGLE
ENVIRONMENTAL
CONSULTING, INC.
8000 W 44th Ave, Wheat Ridge, CO 80033
Ph: 303-433-0479 • F: 303-325-5449



LEGEND

--- INITIAL ASSESSMENT BOUNDARIES

● SS-02 APPROXIMATE LOCATION OF SOIL SAMPLES FIELD SCREENED, ONLY, WITH PHOTOIONIZATION DETECTOR

● SS-02 APPROXIMATE LOCATION OF SOIL SAMPLES SUBMITTED FOR LABORATORY ANALYSIS

PARAMETERS

SAMPLE LOCATION
DATE SAMPLE COLLECTED
APPROXIMATE DEPTH
Arsenic = (mg/kg)
Barium = (mg/kg)
Cadmium = (mg/kg)
Chromium (VI) = (mg/kg)
Copper = (mg/kg)
Lead = (mg/kg)
Nickel = (mg/kg)
Selenium = (mg/kg)
Silver = (mg/kg)
Zinc = (mg/kg)

mg/kg = MILLIGRAMS PER KILOGRAM

(NS) = NOT SAMPLED

NA = NOT ANALYZED

NOTE:

VALUES PRESENTED WITH A LESS THAN SYMBOL (<) DID NOT CONTAIN CONCENTRATIONS AT/OR ABOVE LABORATORY REPORTING LIMITS AND/OR MINIMUM DETECTION LIMITS.

VALUES PRESENTED IN **BOLD** COGCC TABLE 915-1 REGULATORY LIMITS.

*VALUES EXCEED COGCC TABLE 915-1 PROTECTION OF GROUNDWATER SOIL SCREENING LEVELS.

**ACHIEVABLE PRACTICAL QUANTITATIVE LIMITS FOR HEXAVALENT CHROMIUM (Cr VI) IN SOILS IS IN THE RANGE OF 0.1 TO 1 mg/kg. (1) SAMPLE REQUIRED DILUTION, RAISING LABORATORY REPORTING AND DETECTION LIMITS - SAMPLE NON-DETECT.

***ARSENIC IS NATURALLY OCCURRING IN COLORADO. LOCAL CLEAN-UP LEVEL (4.99 mg/kg) is 1.25*BACKGROUND (3.99 mg/kg).

COGCC = COLORADO OIL AND GAS CONSERVATION COMMISSION

METALS IN SOIL MAP
UPRC T4N-R67W-S23 TANK BATTERY
CLOSURE ASSESSMENT
40.304722 / -104.867188
NE¼ NW¼ SEC.23 T4N R67W 6PM
WELD COUNTY, COLORADO
LOCATION ID 329775
REMEDATION # 22738

DATE:
10/19/22

DRAWN BY:
GEC

FIG.
NO. 5



EAGLE
ENVIRONMENTAL
CONSULTING, INC.
8000 W 44th Ave, Wheat Ridge, CO 80033
Ph: 303-433-0479 • F: 303-325-5449



TABLES

Table 1: Photoionization Detector Reading Summary

Table 2: Soil Analytical Results Summary

Table 3: Polycyclic Aromatic Hydrocarbons Analytical Results Summary

Table 4: Metals Analytical Results Summary

TABLE 1
 PHOTOIONIZATION DETECTOR READING SUMMARY
 UPRC T4N-R67W-S23 TANK BATTERY
 CLOSURE ASSESSMENT
 40.304722 / -104.867188
 NE1/4 NW1/4 SEC.23 T4N R67W 6PM
 WELD COUNTY, COLORADO
 LOCATION ID 329775
 REMEDIATION # 22738

Sample Location (Latitude/Longitude)	Date	Approximate Depth (feet)	PID Reading (ppm-v)	Lab Submission (Y/N)
WV-SS-01 @ 5' (40.304699 / -104.867302)	06/09/22	5	1.8	N
WV-SS-02 @ 5' (40.304674 / -104.867270)	06/09/22	5	2.2	N
WV-SS-03 @ 5' (40.304649 / -104.867302)	06/09/22	5	2.4	Y
WV-SS-04 @ 5' (40.304677 / -104.867328)	06/09/22	5	1.1	N
WV-FS-01 @ 6' (40.304676 / -104.867301)	06/09/22	6	1.4	Y
TB-SS-01 @ 1' (40.304680 / -104.867349)	06/09/22	1	1.5	Y
TB-SS-02 @ 3' (40.304720 / -104.867080)	06/09/22	3	2.4	Y
TB-SS-03 @ 3' (40.304721 / -104.867033)	06/09/22	3	2.0	N
TB-SS-04 @ 1' (40.304752 / -104.867039)	06/09/22	1	1.9	N
TB-SS-05 @ 0.5' (40.304663 / -104.867018)	06/09/22	0.5	1.8	N
Background-01 @ 4' (40.304883 / -104.866929)	06/09/22	4	1.6	Y
(Y/N) = Yes or No ppm-v = parts per million by volume PID = Photoionization Detector				

TABLE 2
SOIL ANALYTICAL RESULTS SUMMARY
UPRC T4N-R67W-S23 TANK BATTERY
CLOSURE ASSESSMENT
40.304722 / -104.867188
NE1/4 NW1/4 SEC.23 T4N R67W 6PM
WELD COUNTY, COLORADO
LOCATION ID 329775
REMEDATION # 22738

Sample Location (Latitude/Longitude)	Date	Approximate Depth (feet)	PID Reading (ppm-v)	Benzene (mg/kg)	Toluene (mg/kg)	Ethylbenzene (mg/kg)	Total Xylenes (mg/kg)	TPH-GRO (mg/kg)	TPH-DRO (mg/kg)	TPH-RRO (mg/kg)	1,2,4-TMB (mg/kg)	1,3,5-TMB (mg/kg)	Boron (mg/L)	Specific Conductance (mmhos/cm)	pH (pH units)	SAR
COGCC Table 915-1 Residential Screening Levels (mg/kg)				1.20	490	5.8	58	500			30	27	2	<4	6-8.3	<6
COGCC Table 915-1 Protection of Groundwater Soil Screening Levels				0.0026	0.69	0.78	9.9	--			0.0081	0.0087	--	--	--	--
WV-SS-03 @ 5' (40.304649 / -104.867302)	06/09/22	5	2.4	<0.00200	<0.00200	<0.00200	<0.00200	<0.200	<25.0	<100	<0.00200	<0.00200	0.139	0.202	8.41	0.113
WV-FS-01 @ 6' (40.304676 / -104.867301)	06/09/22	6	1.4	<0.00200	<0.00200	<0.00200	<0.00200	0.725	339	165	<0.00200	<0.00200	0.199	0.293	8.35	0.448
TB-SS-01 @ 1' (40.304680 / -104.867349)	06/09/22	1	1.5	<0.00200	<0.00200	<0.00200	<0.00200	<0.200	<25.0	<100	<0.00200	<0.00200	0.119	0.261	8.12	0.0728
TB-SS-02 @ 3' (40.304720 / -104.867080)	06/09/22	3	2.4	<0.00200	<0.00200	<0.00200	<0.00200	<0.200	<25.0	<100	<0.00200	<0.00200	0.217	0.369	8.27	0.176
Background-01 @ 4' (40.304883 / -104.866929)	06/09/22	4	1.6	NA	NA	NA	NA	NA	NA	NA	NA	NA	NA	NA	8.15	NA
COGCC = Colorado Oil and Gas Conservation Commission mg/kg = milligrams per kilogram mmhos/cm = millimhos per centimeter PID = Photoionization Detector ppm-v = parts per million by volume mg/L = milligrams per liter SAR = Sodium Adsorption Ratio Note: Values presented with a less than symbol (<) did not contain concentrations at or above the laboratory reporting limit. Note: Values presented in BOLD exceed COGCC Table 915-1 Regulatory Limits.																
TPH-GRO = Total Petroleum Hydrocarbons - Gasoline Range Organics TPH-DRO = Total Petroleum Hydrocarbons - Diesel Range Organics TPH-RRO = Total Petroleum Hydrocarbons - Residual Range Organics NA = Not Analyzed 1,2,4-TMB = 1,2,4-Trimethlybenzene 1,3,5-TMB = 1,3,5-Trimethlybenzene																

TABLE 3
POLYCYCLIC AROMATIC HYDROCARBONS ANALYTICAL RESULTS SUMMARY
UPRC T4N-R67W-S23 TANK BATTERY
CLOSURE ASSESSMENT
40.304722 / -104.867188
NE1/4 NW1/4 SEC.23 T4N R67W 6PM
WELD COUNTY, COLORADO
LOCATION ID 329775
REMEDIAION # 22738

Sample Location (Latitude/Longitude)	Date	Approximate Depth (feet)	PID Reading (ppm- v)	1-Methyl- naphthalene (mg/kg)	2-Methyl- naphthalene (mg/kg)	Acenaphthene (mg/kg)	Anthracene (mg/kg)	Benzo(a)-anthracene (mg/kg)	Benzo(a)- pyrene (mg/kg)	Benzo(b)- fluoranthene (mg/kg)	Benzo(k)- fluoranthene (mg/kg)	Chrysene (mg/kg)	Dibenzo(a,h)- anthracene (mg/kg)	Fluoranthene (mg/kg)	Fluorene (mg/kg)	Indeno(1,2,3- cd)-pyrene (mg/kg)	Naphthalene (mg/kg)	Pyrene (mg/kg)
COGCC Table 915-1 Residential Screening Levels				18	24	360	1,800	1.1	0.11	1.1	11	110	0.11	240	240	1.1	2	180
COGCC Table 915-1 Protection of Groundwater Soil Screening Levels				0.006	0.019	0.55	5.8	0.011	0.24	0.3	2.9	9	0.096	8.9	0.54	0.98	0.0038	1.3
WV-SS-03 @ 5' (40.304649 / -104.867302)	06/09/22	5	2.4	<0.00067	<0.00067	<0.00067	<0.00067	<0.00067	<0.00067	<0.00067	<0.00067	<0.00067	<0.00067	<0.00067	<0.00067	<0.00067	<0.00067	<0.00067
WV-FS-01 @ 6' (40.304676 / -104.867301)	06/09/22	6	1.4	0.00723*	0.00695	0.0162	<0.00067	0.00194	<0.00067	0.00271	<0.00067	0.0066	<0.00067	0.00106	0.0318	<0.00067	0.000586	0.00576
TB-SS-01 @ 1' (40.304680 / -104.867349)	06/09/22	1	1.5	<0.00067	<0.00067	<0.00067	<0.00067	0.000668	0.00105	0.00152	0.000822	0.00105	<0.00067	0.00255	<0.00067	0.000985	<0.00067	0.00237
TB-SS-02 @ 3' (40.304720 / -104.867080)	06/09/22	3	2.4	<0.00067	<0.00067	<0.00067	<0.00067	<0.00067	<0.00067	<0.00067	<0.00067	<0.00067	<0.00067	<0.00067	<0.00067	<0.00067	<0.00067	<0.00067
COGCC = Colorado Oil and Gas Conservation Commission mg/kg = milligrams per kilogram Note: Values presented with a less than symbol (<) did not contain concentrations at or above the laboratory reporting limit. Note: Values presented in BOLD contained concentrations exceeding COGCC Table 915-1 Regulatory Limits. Values presented with an asterisk (*) exceed COGCC Table 915-1 Protection of Groundwater Soil Screening Levels.																		
				PID = Photoionization Detector ppm-v = parts per million by volume														

TABLE 4
METALS ANALYTICAL RESULTS SUMMARY
UPRC T4N-R67W-S23 TANK BATTERY
CLOSURE ASSESSMENT
40.304722 / -104.867188
NE1/4 NW1/4 SEC.23 T4N R67W 6PM
WELD COUNTY, COLORADO
LOCATION ID 329775
REMEDATION # 22738

Sample Location (Latitude/Longitude)	Date	Approximate Depth (feet)	Arsenic (mg/kg)	Barium (mg/kg)	Cadmium (mg/kg)	Hexavalent Chromium (mg/kg)	Copper (mg/kg)	Lead (mg/kg)	Nickel (mg/kg)	Selenium (mg/kg)	Silver (mg/kg)	Zinc (mg/kg)
COGCC Table 915-1 Residential Screening Levels			0.68***	15,000	71	0.3**	3,100	400	1,500	390	390	23,000
COGCC Table 915-1 Protection of Groundwater Soil Screening Levels			0.29***	82	0.38	0.00067**	46	14	26	0.26	0.8	370
Local Clean-up Levels			4.99***	--	--	0.1 to 1**	--	--	--	--	--	--
WV-FS-01 @ 6' (40.304676 / -104.867301)	06/09/22	6	3.01***	101*	0.121	<1.22**(1)	7.42	6.41	8.90	0.162	0.0325	28.6
Background-01 @ 4' (40.304883 / -104.866929)	06/09/22	4	3.99***	155*	0.187	NA	8.90	9.12	12.0	<0.186	<0.186	33.1
COGCC = Colorado Oil and Gas Conservation Commission mg/kg = milligrams per kilogram NA = Not Analyzed Notes: Values presented with a less than symbol (<) did not contain concentrations at or above the laboratory reporting limit or minimum detection levels. Values presented in BOLD exceed applicable COGCC Table 915-1 Regulatory Limits Values presented with an asterisk (*) contained exceed COGCC Table 915-1 Protection of Groundwater Soil Screening Levels **Achievable practical quantitative limits for Hexavalent Chromium in soils is in the range of 0.1 to 1 mg/kg. (1) Sample required dilution, raising laboratory reporting and detection limits - sample non-detect. ***Arsenic is naturally occurring in Colorado. Local Clean-up Level (4.99 mg/kg) is 1.25*Background (3.99 mg/kg).												



ATTACHMENT A

Photo Log

UPRC T4N-R67W-S23 Tank Battery

Location ID 329775

Remediation # 22738

Closure Assessment

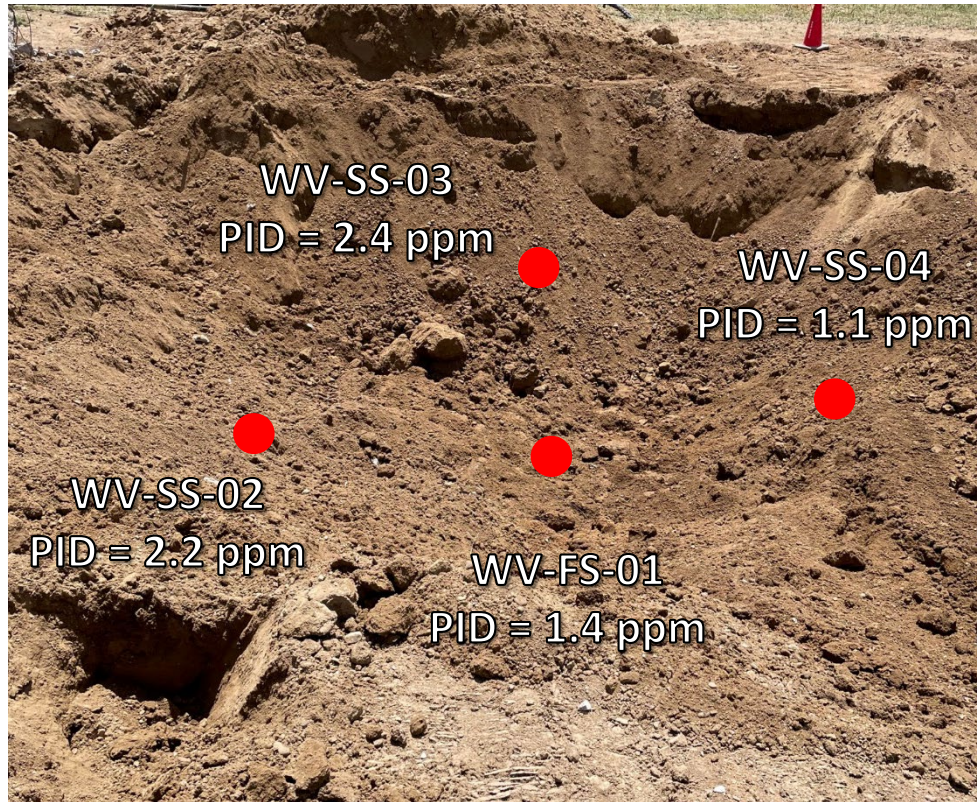
June 2022



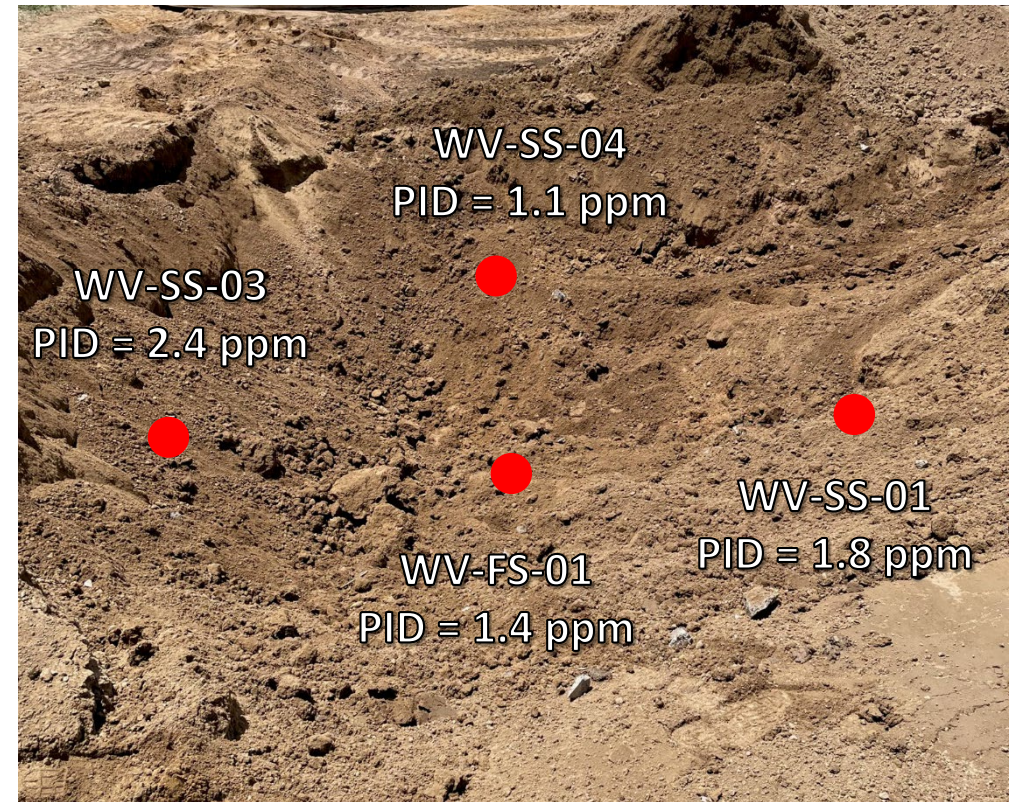
EAGLE
ENVIRONMENTAL
CONSULTING, INC.
8000 W 44th Ave, Wheat Ridge, CO 80033
Ph: 303-433-0479 • F: 303-325-5449



Buried Vault Excavation – 06/09/22



Looking south at water vault excavation



Looking west at water vault excavation

No petroleum hydrocarbon staining observed. Slight petroleum hydrocarbon odor observed on excavation floor

Tank Battery Decommissioning – 06/09/22

Looking south

Former production tank location – removed prior to arrival

No petroleum hydrocarbon staining or odor observed



Tank Battery Decommissioning – 06/09/22



Looking east at separator to flowline connection point

No petroleum hydrocarbon staining or odor observed



Looking west at separator to dumpline connection point

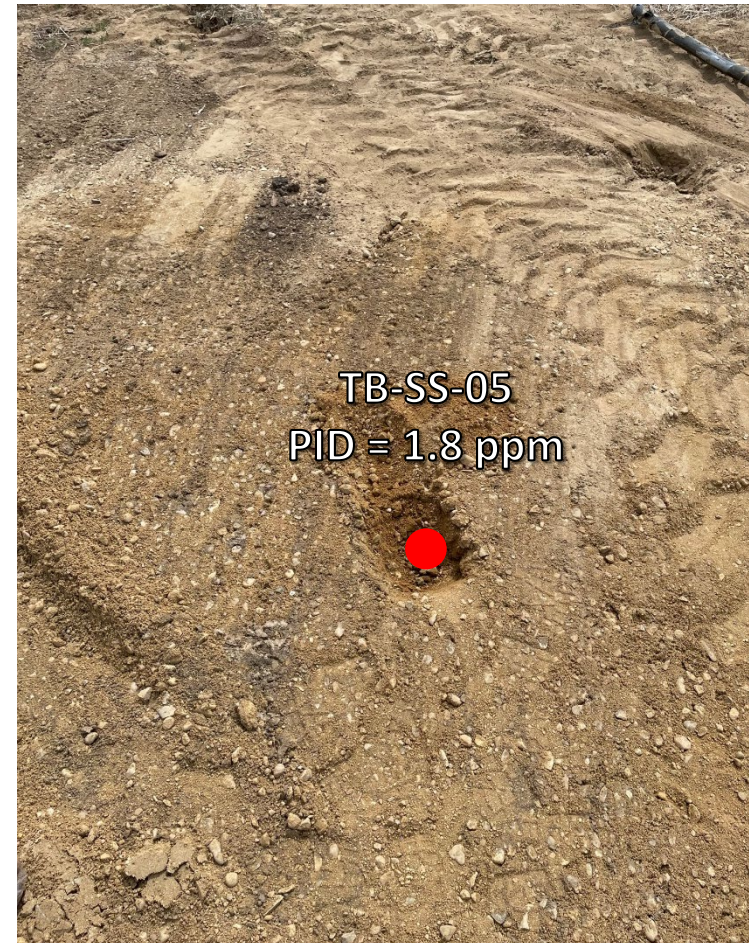
No petroleum hydrocarbon staining or odor observed

Tank Battery Decommissioning – 06/09/22



Looking west at meter house connection

No petroleum hydrocarbon staining or odor observed



Looking east at VOC burner footprint

No petroleum hydrocarbon staining or odor observed



ATTACHMENT B

Laboratory Analytical Reports



July 05, 2022

Eagle Environmental Consulting, Inc.

Martin C Eckert III

8000 W 44th Ave

Wheat Ridge CO 80033

Project Name - Noble - UPRC T4N-R67W-S23 Tank Battery **Project Number - [none]**

Attached are your analytical results for Noble - UPRC T4N-R67W-S23 Tank Battery received by Origins Laboratory, Inc. June 09, 2022. This project is associated with Origins project number Y206255-01.

The analytical results in the following report were analyzed under the guidelines of EPA Methods. These methods are identified as follows; "SW" are defined in SW-846, "EPA" are defined in 40CFR part 136 and "SM" are defined in the most current revision of Standard Methods For the Examination of Water and Wastewater.

The analytical results apply specifically to the samples and analyses specified per the attached Chain of Custody. As such, this report shall not be reproduced except in full, without the written approval of Origin's laboratory.

Unless otherwise noted, the analytical results for all soil samples are reported on a wet weight basis. All analytical analyses were performed under NELAP guidelines unless noted by a data qualifier.

Any holding time exceedances, deviations from the method specifications or deviations from Origins Laboratory's Standard Operating Procedures are outlined in the case narrative.

Thank you for selecting Origins for your analytical needs. Please contact us with any questions concerning this report, or if we can help with anything at all.

Origins Laboratory, Inc.
303.433.1322
o-squad@oelabinc.com



1725 Elk Place, Denver, CO 80211 | Phone: 303.433.1322 | Fax: 303.265.9645

Eagle Environmental Consulting, Inc.

8000 W 44th Ave

Wheat Ridge CO 80033

Martin C Eckert III

Project Number: [none]

Project: Noble - UPRC T4N-R67W-S23 Tank
Battery

CROSS REFERENCE REPORT

Sample ID	Laboratory ID	Matrix	Date Sampled	Date Received
WV-SS-03@5'	Y206255-01	Soil	June 9, 2022 13:05	06/09/2022 16:00
WV-FS-01@6'	Y206255-02	Soil	June 9, 2022 13:08	06/09/2022 16:00
TB-SS-01@1'	Y206255-03	Soil	June 9, 2022 11:14	06/09/2022 16:00
TB-SS-02@3'	Y206255-04	Soil	June 9, 2022 10:26	06/09/2022 16:00

Chain of Custody Modification Request

On 6/28/2022, Grace Congdon from Eagle Environmental contacted Jordan Bynon via email regarding Y206255 requesting that Table 915 Metals be added to WV-FS-01@6'.

Requested modifications to the chain of custody were made by Jordan Bynon on 6/28/2022.

Origins Laboratory, Inc.



The results in this report apply to the samples analyzed in accordance with the chain of custody document. This analytical report must be reproduced in its entirety.

Martin C Eckert III
Project Number: [none]
Project: Noble - UPRC T4N-R67W-S23 Tank
Battery

[illegible]

Origins Laboratory, Inc.

Byron

The results in this report apply to the samples analyzed in accordance with the chain of custody document. This analytical report must be reproduced in its entirety.

Eagle Environmental Consulting, Inc.

8000 W 44th Ave

Wheat Ridge CO 80033

Martin C Eckert III

Project Number: [none]

Project: Noble - UPRC T4N-R67W-S23 Tank Battery

Origins Laboratory

F-012207-01-R1
Effective Date: 01/09/12

Sample Receipt Checklist

Origins Work Order: Y206 255

Client: Eagle

Client Project ID: UPRC T4N-R67W-S23

Checklist Completed by: MS

Shipped Via: HD

Date/time completed: 6/10/22

Airbill #: N/A

Matrix(s) Received: (Check all that apply): ☒ Soil/Solid ☐ Water ☐ Other: _____

Cooler Number/Temperature: 1 / 1.8 °C / _____ °C / _____ °C (Describe) _____ °C

Thermometer ID: T004

Requirement Description	Yes	No	N/A	Comments (if any)
If samples require cooling, was the temperature between 0°C to ≤ 6°C ⁽¹⁾ ?	<input checked="" type="checkbox"/>			
Is there ice present (document if blue ice is used)	<input checked="" type="checkbox"/>			
Are custody seals present on cooler? (if so, document in comments if they are signed and dated, broken or intact)		<input checked="" type="checkbox"/>		
Are custody seals present on each sample container? (if so, document in comments if they are signed and dated, broken or intact)		<input checked="" type="checkbox"/>		
Were all samples received intact ⁽¹⁾ ?	<input checked="" type="checkbox"/>			
Was adequate sample volume provided ⁽¹⁾ ?	<input checked="" type="checkbox"/>			
Are short holding time analytes or samples with HTs due within 48 hours present ⁽¹⁾ ?		<input checked="" type="checkbox"/>		
Is a chain-of-custody (COC) present and filled out completely ⁽¹⁾ ?	<input checked="" type="checkbox"/>			
Does the COC agree with the number and type of sample bottles received ⁽¹⁾ ?	<input checked="" type="checkbox"/>			
Do the sample IDs on the bottle labels match the COC ⁽¹⁾ ?	<input checked="" type="checkbox"/>			
Is the COC properly relinquished by the client with date and time recorded ⁽¹⁾ ?	<input checked="" type="checkbox"/>			
For volatiles in water – is there headspace (> ¼ inch bubble) present? If yes, contact client and note in narrative.			<input checked="" type="checkbox"/>	
Are samples preserved that require preservation and was it checked ⁽¹⁾ ? (note ID of confirmation instrument used in comments) / (preservation is not confirmed for subcontracted analyses in order to insure sample integrity)/(pH < 2 for samples preserved with HNO ₃ , HCL, H ₂ SO ₄) / (pH > 10 for samples preserved with NaAsO ₂ +NaOH, ZnAc+NaOH)			<input checked="" type="checkbox"/>	
Additional Comments (if any):				

⁽¹⁾If NO, then contact the client before proceeding with analysis and note date/time and person contacted as well as the corrective action to in the additional comments (above) and the case narrative.

Reviewed by (Project Manager) JB Date/Time Reviewed 6-13-22

Origins Laboratory, Inc.

Bynon

The results in this report apply to the samples analyzed in accordance with the chain of custody document. This analytical report must be reproduced in its entirety.

Eagle Environmental Consulting, Inc.
8000 W 44th Ave
Wheat Ridge CO 80033

Martin C Eckert III
Project Number: [none]
Project: Noble - UPRC T4N-R67W-S23 Tank Battery

WV-SS-03@5'

6/9/2022 1:05:00PM

Analyte	Result	Min Detection Limit	Reporting Limit	Units	Dilution	Batch	Prepared	Analyzed	Notes
---------	--------	---------------------	-----------------	-------	----------	-------	----------	----------	-------

Origins Laboratory, Inc.
Y206255-01 (Soil)

Boron (DTPA Sorbitol)

Boron	0.139	0.100	mg/L	1	B2F1018	06/10/2022	06/13/2022	
-------	-------	-------	------	---	---------	------------	------------	--

DRO/ORO by EPA 8015D

Diesel (C10-C28)	ND	25.0	mg/kg	1	B2F1306	06/13/2022	06/17/2022	U
Residual Range Organics (C28-C40)	ND	100	"	"	"	"	"	U

Surrogate: o-Terphenyl	74.1 %	50-150			"	"	"	
------------------------	--------	--------	--	--	---	---	---	--

GBTEX+TMBs by 8260D

1,2,4-Trimethylbenzene	ND	0.00200	mg/kg	1	B2F1031	06/10/2022	06/10/2022	U
1,3,5-Trimethylbenzene	ND	0.00200	"	"	"	"	"	U
Benzene	ND	0.00200	"	"	"	"	"	U
Ethylbenzene	ND	0.00200	"	"	"	"	"	U
Toluene	ND	0.00200	"	"	"	"	"	U
Xylenes, total	ND	0.00200	"	"	"	"	"	U
Gasoline Range Hydrocarbons	ND	0.200	"	"	"	"	"	U

Surrogate: 1,2-Dichloroethane-d4	106 %	70-130			"	"	"	
----------------------------------	-------	--------	--	--	---	---	---	--

Origins Laboratory, Inc.



The results in this report apply to the samples analyzed in accordance with the chain of custody document. This analytical report must be reproduced in its entirety.

Eagle Environmental Consulting, Inc.
8000 W 44th Ave
Wheat Ridge CO 80033

Martin C Eckert III
Project Number: [none]
Project: Noble - UPRC T4N-R67W-S23 Tank Battery

WV-SS-03@5'

6/9/2022 1:05:00PM

Analyte	Result	Min Detection Limit	Reporting Limit	Units	Dilution	Batch	Prepared	Analyzed	Notes
---------	--------	---------------------	-----------------	-------	----------	-------	----------	----------	-------

Origins Laboratory, Inc.
Y206255-01 (Soil)

GBTEX+TMBs by 8260D

Surrogate: Toluene-d8	93.6 %	70-130	B2F10 31	06/10/2022	06/10/2022
Surrogate: 4-Bromofluorobenzene	98.9 %	70-130	"	"	"

Metals by Saturated Paste by EPA 6010

Calcium	1.42	0.499	meq/L	10	[CALC]	06/10/2022	06/13/2022
Magnesium	ND	0.823	"	"	"	"	"
Sodium	ND	0.435	"	"	"	"	"

PAH by 8270D SIM

1-Methylnaphthalene	ND	0.000364	0.00067	mg/Kg	1	L621355	06/14/2022	06/15/2022
2-Methylnaphthalene	ND	0.000645	0.00067	"	"	"	"	"
Acenaphthene	ND	0.000304	0.00067	"	"	"	"	"
Anthracene	ND	0.000334	0.00067	"	"	"	"	"
Benzo(a)anthracene	ND	0.000493	0.00067	"	"	"	"	"
Benzo(a)pyrene	ND	0.000468	0.00067	"	"	"	"	"
Benzo(b)fluoranthene	ND	0.000585	0.00067	"	"	"	"	"
Benzo(k)fluoranthene	ND	0.000437	0.00067	"	"	"	"	"
Chrysene	ND	0.000624	0.00067	"	"	"	"	"
Dibenz(a,h)anthracene	ND	0.000614	0.00067	"	"	"	"	"
Fluoranthene	ND	0.000394	0.00067	"	"	"	"	"

Origins Laboratory, Inc.



The results in this report apply to the samples analyzed in accordance with the chain of custody document. This analytical report must be reproduced in its entirety.

Eagle Environmental Consulting, Inc.
8000 W 44th Ave
Wheat Ridge CO 80033

Martin C Eckert III
Project Number: [none]
Project: Noble - UPRC T4N-R67W-S23 Tank Battery

WV-SS-03@5'

6/9/2022 1:05:00PM

Analyte	Result	Min Detection Limit	Reporting Limit	Units	Dilution	Batch	Prepared	Analyzed	Notes
---------	--------	---------------------	-----------------	-------	----------	-------	----------	----------	-------

Waypoint Analytical, Inc.
Y206255-01 (Soil)

PAH by 8270D SIM

Fluorene	ND	0.000286	0.00067	mg/Kg	1	L621355	06/14/2022	06/15/2022
Indeno(1,2,3-cd)pyrene	ND	0.000627	0.00067	"	"	"	"	"
Naphthalene	ND	0.000484	0.00067	"	"	"	"	"
Pyrene	ND	0.000643	0.00067	"	"	"	"	"

Surrogate: 2-Fluorobiphenyl	47.7 %	33-115	"	"	"
Surrogate: 4-Terphenyl-d14	76.6 %	33-122	"	"	"
Surrogate: Nitrobenzene-d5	56.6 %	29-110	"	"	"

pH in Soil by 9045D

pH	8.41	pH Units	1	B2F1021	06/10/2022	06/11/2022
----	------	----------	---	---------	------------	------------

SAR by 20B Saturated Paste

SAR	0.113	SAR	1	B2F1015	06/10/2022	06/13/2022
-----	-------	-----	---	---------	------------	------------

Specific Conductance Mod. 9050A

Specific Conductance (EC)	0.202	0.00500	mmhos/cm	1	B2F1021	06/10/2022	06/11/2022
---------------------------	-------	---------	----------	---	---------	------------	------------

Origins Laboratory, Inc.



The results in this report apply to the samples analyzed in accordance with the chain of custody document. This analytical report must be reproduced in its entirety.

Eagle Environmental Consulting, Inc.
8000 W 44th Ave
Wheat Ridge CO 80033

Martin C Eckert III
Project Number: [none]
Project: Noble - UPRC T4N-R67W-S23 Tank
Battery

WV-FS-01@6'

6/9/2022 1:08:00PM

Analyte	Result	Min Detection Limit	Reporting Limit	Units	Dilution	Batch	Prepared	Analyzed	Notes
---------	--------	------------------------	--------------------	-------	----------	-------	----------	----------	-------

Origins Laboratory, Inc.
Y206255-02 (Soil)

Boron (DTPA Sorbitol)

Boron	0.199	0.100	mg/L	1	B2F1018	06/10/2022	06/13/2022
-------	-------	-------	------	---	---------	------------	------------

DRO/ORO by EPA 8015D

Diesel (C10-C28)	339	25.0	mg/kg	1	B2F1306	06/13/2022	06/17/2022
Residual Range Organics (C28-C40)	165	100	"	"	"	"	"

Surrogate: o-Terphenyl	77.2 %	50-150	"	"	"
------------------------	--------	--------	---	---	---

GBTEX+TMBs by 8260D

1,2,4-Trimethylbenzene	ND	0.00200	mg/kg	1	B2F1031	06/10/2022	06/10/2022	U
1,3,5-Trimethylbenzene	ND	0.00200	"	"	"	"	"	U
Benzene	ND	0.00200	"	"	"	"	"	U
Ethylbenzene	ND	0.00200	"	"	"	"	"	U
Toluene	ND	0.00200	"	"	"	"	"	U
Xylenes, total	ND	0.00200	"	"	"	"	"	U
Gasoline Range Hydrocarbons	0.725	0.200	"	"	"	"	"	

Surrogate: 1,2-Dichloroethane-d4	108 %	70-130	"	"	"
Surrogate: Toluene-d8	94.3 %	70-130	"	"	"

Origins Laboratory, Inc.



The results in this report apply to the samples analyzed in accordance with the chain of custody document. This analytical report must be reproduced in its entirety.

Eagle Environmental Consulting, Inc.
8000 W 44th Ave
Wheat Ridge CO 80033

Martin C Eckert III
Project Number: [none]
Project: Noble - UPRC T4N-R67W-S23 Tank Battery

WV-FS-01@6'

6/9/2022 1:08:00PM

Analyte	Result	Min Detection Limit	Reporting Limit	Units	Dilution	Batch	Prepared	Analyzed	Notes
---------	--------	---------------------	-----------------	-------	----------	-------	----------	----------	-------

Origins Laboratory, Inc.
Y206255-02 (Soil)

GBTEX+TMBs by 8260D

Surrogate: 4-Bromofluorobenzene	102 %	70-130	B2F10 31	06/10/2022	06/10/2022
---------------------------------	-------	--------	-------------	------------	------------

Metals by Saturated Paste by EPA 6010

Calcium	1.09	0.499	meq/L	10	[CALC]	06/10/2022	06/13/2022
Magnesium	ND	0.823	"	"	"	"	"
Sodium	0.435	0.435	"	"	"	"	"

PAH by 8270D SIM

1-Methylnaphthalene	0.00723	0.000364	0.00067	mg/Kg	1	L621355	06/14/2022	06/15/2022	
2-Methylnaphthalene	0.00695	0.000645	0.00067	"	"	"	"	"	
Acenaphthene	0.0162	0.000304	0.00067	"	"	"	"	"	
Anthracene	ND	0.000334	0.00067	"	"	"	"	"	
Benzo(a)anthracene	0.00194	0.000493	0.00067	"	"	"	"	"	
Benzo(a)pyrene	ND	0.000468	0.00067	"	"	"	"	"	
Benzo(b)fluoranthene	0.00271	0.000585	0.00067	"	"	"	"	"	B
Benzo(k)fluoranthene	ND	0.000437	0.00067	"	"	"	"	"	
Chrysene	0.0066	0.000624	0.00067	"	"	"	"	"	
Dibenz(a,h)anthracene	ND	0.000614	0.00067	"	"	"	"	"	
Fluoranthene	0.00106	0.000394	0.00067	"	"	"	"	"	
Fluorene	0.0318	0.000286	0.00067	"	"	"	"	"	
Indeno(1,2,3-cd)pyrene	ND	0.000627	0.00067	"	"	"	"	"	

Origins Laboratory, Inc.



The results in this report apply to the samples analyzed in accordance with the chain of custody document. This analytical report must be reproduced in its entirety.

Eagle Environmental Consulting, Inc.
8000 W 44th Ave
Wheat Ridge CO 80033

Martin C Eckert III
Project Number: [none]
Project: Noble - UPRC T4N-R67W-S23 Tank Battery

WV-FS-01@6'

6/9/2022 1:08:00PM

Analyte	Result	Min Detection Limit	Reporting Limit	Units	Dilution	Batch	Prepared	Analyzed	Notes
---------	--------	---------------------	-----------------	-------	----------	-------	----------	----------	-------

Waypoint Analytical, Inc.
Y206255-02 (Soil)

PAH by 8270D SIM

Naphthalene	0.000586	0.000484	0.00067	mg/Kg	1	L621355	06/14/2022	06/15/2022	J
Pyrene	0.00576	0.000643	0.00067	"	"	"	"	"	

Surrogate: 2-Fluorobiphenyl	43.5 %	33-115	"	"	"
Surrogate: 4-Terphenyl-d14	72.7 %	33-122	"	"	"
Surrogate: Nitrobenzene-d5	52.6 %	29-110	"	"	"

pH in Soil by 9045D

pH	8.35	pH Units	1	B2F1021	06/10/2022	06/11/2022
----	------	----------	---	---------	------------	------------

SAR by 20B Saturated Paste

SAR	0.448	SAR	1	B2F1015	06/10/2022	06/13/2022
-----	-------	-----	---	---------	------------	------------

Specific Conductance Mod. 9050A

Specific Conductance (EC)	0.293	0.00500	mmhos/cm	1	B2F1021	06/10/2022	06/11/2022
---------------------------	-------	---------	----------	---	---------	------------	------------

Table 915 metals by EPA 6020B

Arsenic	3.01	0.00100	mg/kg	1	B2F2822	06/28/2022	06/28/2022
Barium	101	0.100	"	"	"	"	"
Cadmium	0.121	0.00100	"	"	"	"	"

Origins Laboratory, Inc.



The results in this report apply to the samples analyzed in accordance with the chain of custody document. This analytical report must be reproduced in its entirety.

Eagle Environmental Consulting, Inc.
8000 W 44th Ave
Wheat Ridge CO 80033

Martin C Eckert III
Project Number: [none]
Project: Noble - UPRC T4N-R67W-S23 Tank
Battery

WV-FS-01@6'

6/9/2022 1:08:00PM

Analyte	Result	Min Detection Limit	Reporting Limit	Units	Dilution	Batch	Prepared	Analyzed	Notes
---------	--------	------------------------	--------------------	-------	----------	-------	----------	----------	-------

Origins Laboratory, Inc.
Y206255-02 (Soil)

Table 915 metals by EPA 6020B

Copper	7.42	0.0100	mg/kg	1	B2F2822	06/28/2022	06/28/2022
Lead	6.41	0.00100	"	"	"	"	"
Nickel	8.90	0.00100	"	"	"	"	"
Selenium	0.162	0.00100	"	"	"	"	"
Silver	0.0325	0.00100	"	"	"	"	"
Zinc	28.6	0.100	"	"	"	"	"

Total Metals by 7196A

Chromium, Hexavalent	ND	1.22	2.5	mg/Kg	5	L624630	06/09/2022	07/01/2022
----------------------	----	------	-----	-------	---	---------	------------	------------

Origins Laboratory, Inc.



*The results in this report apply to the samples analyzed in
accordance with the chain of custody document. This
analytical report must be reproduced in its entirety.*

Eagle Environmental Consulting, Inc.
8000 W 44th Ave
Wheat Ridge CO 80033

Martin C Eckert III
Project Number: [none]
Project: Noble - UPRC T4N-R67W-S23 Tank Battery

TB-SS-01@1'
6/9/2022 11:14:00AM

Analyte	Result	Min Detection Limit	Reporting Limit	Units	Dilution	Batch	Prepared	Analyzed	Notes
---------	--------	---------------------	-----------------	-------	----------	-------	----------	----------	-------

Origins Laboratory, Inc.
Y206255-03 (Soil)

Boron (DTPA Sorbitol)

Boron	0.119	0.100	mg/L	1	B2F1018	06/10/2022	06/13/2022	
-------	-------	-------	------	---	---------	------------	------------	--

DRO/ORO by EPA 8015D

Diesel (C10-C28)	ND	25.0	mg/kg	1	B2F1306	06/13/2022	06/17/2022	U
Residual Range Organics (C28-C40)	ND	100	"	"	"	"	"	U

Surrogate: o-Terphenyl	74.5 %	50-150			"	"	"	
------------------------	--------	--------	--	--	---	---	---	--

GBTEX+TMBs by 8260D

1,2,4-Trimethylbenzene	ND	0.00200	mg/kg	1	B2F1031	06/10/2022	06/10/2022	U
1,3,5-Trimethylbenzene	ND	0.00200	"	"	"	"	"	U
Benzene	ND	0.00200	"	"	"	"	"	U
Ethylbenzene	ND	0.00200	"	"	"	"	"	U
Toluene	ND	0.00200	"	"	"	"	"	U
Xylenes, total	ND	0.00200	"	"	"	"	"	U
Gasoline Range Hydrocarbons	ND	0.200	"	"	"	"	"	U

Surrogate: 1,2-Dichloroethane-d4	108 %	70-130			"	"	"	
----------------------------------	-------	--------	--	--	---	---	---	--

Origins Laboratory, Inc.



The results in this report apply to the samples analyzed in accordance with the chain of custody document. This analytical report must be reproduced in its entirety.

Eagle Environmental Consulting, Inc.
8000 W 44th Ave
Wheat Ridge CO 80033

Martin C Eckert III
Project Number: [none]
Project: Noble - UPRC T4N-R67W-S23 Tank Battery

TB-SS-01@1'
6/9/2022 11:14:00AM

Analyte	Result	Min Detection Limit	Reporting Limit	Units	Dilution	Batch	Prepared	Analyzed	Notes
---------	--------	---------------------	-----------------	-------	----------	-------	----------	----------	-------

Origins Laboratory, Inc.
Y206255-03 (Soil)

GBTEX+TMBs by 8260D

Surrogate: Toluene-d8	93.7 %	70-130	B2F10 31	06/10/2022	06/10/2022
Surrogate: 4-Bromofluorobenzene	99.0 %	70-130	"	"	"

Metals by Saturated Paste by EPA 6010

Calcium	1.79	0.499	meq/L	10	[CALC]	06/10/2022	06/13/2022
Magnesium	ND	0.823	"	"	"	"	"
Sodium	ND	0.435	"	"	"	"	"

PAH by 8270D SIM

1-Methylnaphthalene	ND	0.000364	0.00067	mg/Kg	1	L621492	06/14/2022	06/15/2022
2-Methylnaphthalene	ND	0.000645	0.00067	"	"	"	"	"
Acenaphthene	ND	0.000304	0.00067	"	"	"	"	"
Anthracene	ND	0.000334	0.00067	"	"	"	"	"
Benzo(a)anthracene	0.000668	0.000493	0.00067	"	"	"	"	"
Benzo(a)pyrene	0.00105	0.000468	0.00067	"	"	"	"	"
Benzo(b)fluoranthene	0.00152	0.000585	0.00067	"	"	"	"	"
Benzo(k)fluoranthene	0.000822	0.000437	0.00067	"	"	"	"	"
Chrysene	0.00105	0.000624	0.00067	"	"	"	"	"
Dibenz(a,h)anthracene	ND	0.000614	0.00067	"	"	"	"	"
Fluoranthene	0.00255	0.000394	0.00067	"	"	"	"	"
Fluorene	ND	0.000286	0.00067	"	"	"	"	"

Origins Laboratory, Inc.



The results in this report apply to the samples analyzed in accordance with the chain of custody document. This analytical report must be reproduced in its entirety.

Eagle Environmental Consulting, Inc.
8000 W 44th Ave
Wheat Ridge CO 80033

Martin C Eckert III
Project Number: [none]
Project: Noble - UPRC T4N-R67W-S23 Tank Battery

TB-SS-01@1'
6/9/2022 11:14:00AM

Analyte	Result	Min Detection Limit	Reporting Limit	Units	Dilution	Batch	Prepared	Analyzed	Notes
---------	--------	---------------------	-----------------	-------	----------	-------	----------	----------	-------

Waypoint Analytical, Inc.
Y206255-03 (Soil)

PAH by 8270D SIM

Indeno(1,2,3-cd)pyrene	0.000985	0.000627	0.00067	mg/Kg	1	L621492	06/14/2022	06/15/2022	
Naphthalene	ND	0.000484	0.00067	"	"	"	"	"	
Pyrene	0.00237	0.000643	0.00067	"	"	"	"	"	

Surrogate: 2-Fluorobiphenyl	71.9 %		33-115			"	"	"	
Surrogate: 4-Terphenyl-d14	94.6 %		33-122			"	"	"	
Surrogate: Nitrobenzene-d5	89.1 %		29-110			"	"	"	

pH in Soil by 9045D

pH	8.12			pH Units	1	B2F1021	06/10/2022	06/11/2022	
----	------	--	--	----------	---	---------	------------	------------	--

SAR by 20B Saturated Paste

SAR	0.0728			SAR	1	B2F1015	06/10/2022	06/13/2022	
-----	--------	--	--	-----	---	---------	------------	------------	--

Specific Conductance Mod. 9050A

Specific Conductance (EC)	0.261		0.00500	mmhos/cm	1	B2F1021	06/10/2022	06/11/2022	
---------------------------	-------	--	---------	----------	---	---------	------------	------------	--

Origins Laboratory, Inc.



The results in this report apply to the samples analyzed in accordance with the chain of custody document. This analytical report must be reproduced in its entirety.

Eagle Environmental Consulting, Inc.
8000 W 44th Ave
Wheat Ridge CO 80033

Martin C Eckert III
Project Number: [none]
Project: Noble - UPRC T4N-R67W-S23 Tank Battery

TB-SS-02@3'
6/9/2022 10:26:00AM

Analyte	Result	Min Detection Limit	Reporting Limit	Units	Dilution	Batch	Prepared	Analyzed	Notes
---------	--------	---------------------	-----------------	-------	----------	-------	----------	----------	-------

Origins Laboratory, Inc.
Y206255-04 (Soil)

Boron (DTPA Sorbitol)

Boron	0.217	0.100	mg/L	1	B2F1018	06/10/2022	06/13/2022	
-------	-------	-------	------	---	---------	------------	------------	--

DRO/ORO by EPA 8015D

Diesel (C10-C28)	ND	25.0	mg/kg	1	B2F1306	06/13/2022	06/17/2022	U
Residual Range Organics (C28-C40)	ND	100	"	"	"	"	"	U

Surrogate: o-Terphenyl	74.8 %	50-150			"	"	"	
------------------------	--------	--------	--	--	---	---	---	--

GBTEX+TMBs by 8260D

1,2,4-Trimethylbenzene	ND	0.00200	mg/kg	1	B2F1031	06/10/2022	06/10/2022	U
1,3,5-Trimethylbenzene	ND	0.00200	"	"	"	"	"	U
Benzene	ND	0.00200	"	"	"	"	"	U
Ethylbenzene	ND	0.00200	"	"	"	"	"	U
Toluene	ND	0.00200	"	"	"	"	"	U
Xylenes, total	ND	0.00200	"	"	"	"	"	U
Gasoline Range Hydrocarbons	ND	0.200	"	"	"	"	"	U

Surrogate: 1,2-Dichloroethane-d4	110 %	70-130			"	"	"	
----------------------------------	-------	--------	--	--	---	---	---	--

Origins Laboratory, Inc.



The results in this report apply to the samples analyzed in accordance with the chain of custody document. This analytical report must be reproduced in its entirety.

Eagle Environmental Consulting, Inc.
8000 W 44th Ave
Wheat Ridge CO 80033

Martin C Eckert III
Project Number: [none]
Project: Noble - UPRC T4N-R67W-S23 Tank Battery

TB-SS-02@3'
6/9/2022 10:26:00AM

Analyte	Result	Min Detection Limit	Reporting Limit	Units	Dilution	Batch	Prepared	Analyzed	Notes
---------	--------	---------------------	-----------------	-------	----------	-------	----------	----------	-------

Origins Laboratory, Inc.
Y206255-04 (Soil)

GBTEX+TMBs by 8260D

Surrogate: Toluene-d8	93.7 %	70-130	B2F10 31	06/10/2022	06/10/2022
Surrogate: 4-Bromofluorobenzene	98.1 %	70-130	"	"	"

Metals by Saturated Paste by EPA 6010

Calcium	2.00	0.499	meq/L	10	[CALC]	06/10/2022	06/13/2022
Magnesium	ND	0.823	"	"	"	"	"
Sodium	ND	0.435	"	"	"	"	"

PAH by 8270D SIM

1-Methylnaphthalene	ND	0.000364	0.00067	mg/Kg	1	L621492	06/14/2022	06/15/2022
2-Methylnaphthalene	ND	0.000645	0.00067	"	"	"	"	"
Acenaphthene	ND	0.000304	0.00067	"	"	"	"	"
Anthracene	ND	0.000334	0.00067	"	"	"	"	"
Benzo(a)anthracene	ND	0.000493	0.00067	"	"	"	"	"
Benzo(a)pyrene	ND	0.000468	0.00067	"	"	"	"	"
Benzo(b)fluoranthene	ND	0.000585	0.00067	"	"	"	"	"
Benzo(k)fluoranthene	ND	0.000437	0.00067	"	"	"	"	"
Chrysene	ND	0.000624	0.00067	"	"	"	"	"
Dibenz(a,h)anthracene	ND	0.000614	0.00067	"	"	"	"	"
Fluoranthene	ND	0.000394	0.00067	"	"	"	"	"

Origins Laboratory, Inc.



The results in this report apply to the samples analyzed in accordance with the chain of custody document. This analytical report must be reproduced in its entirety.

Eagle Environmental Consulting, Inc.
8000 W 44th Ave
Wheat Ridge CO 80033

Martin C Eckert III
Project Number: [none]
Project: Noble - UPRC T4N-R67W-S23 Tank Battery

TB-SS-02@3'
6/9/2022 10:26:00AM

Analyte	Result	Min Detection Limit	Reporting Limit	Units	Dilution	Batch	Prepared	Analyzed	Notes
---------	--------	---------------------	-----------------	-------	----------	-------	----------	----------	-------

Waypoint Analytical, Inc.
Y206255-04 (Soil)

PAH by 8270D SIM

Fluorene	ND	0.000286	0.00067	mg/Kg	1	L621492	06/14/2022	06/15/2022
Indeno(1,2,3-cd)pyrene	ND	0.000627	0.00067	"	"	"	"	"
Naphthalene	ND	0.000484	0.00067	"	"	"	"	"
Pyrene	ND	0.000643	0.00067	"	"	"	"	"

Surrogate: 2-Fluorobiphenyl	55.9 %	33-115	"	"	"
Surrogate: 4-Terphenyl-d14	73.3 %	33-122	"	"	"
Surrogate: Nitrobenzene-d5	74.5 %	29-110	"	"	"

pH in Soil by 9045D

pH	8.27	pH Units	1	B2F1021	06/10/2022	06/11/2022
----	------	----------	---	---------	------------	------------

SAR by 20B Saturated Paste

SAR	0.176	SAR	1	B2F1015	06/10/2022	06/13/2022
-----	-------	-----	---	---------	------------	------------

Specific Conductance Mod. 9050A

Specific Conductance (EC)	0.369	0.00500	mmhos/cm	1	B2F1021	06/10/2022	06/11/2022
---------------------------	-------	---------	----------	---	---------	------------	------------

Origins Laboratory, Inc.



The results in this report apply to the samples analyzed in accordance with the chain of custody document. This analytical report must be reproduced in its entirety.

Eagle Environmental Consulting, Inc.
8000 W 44th Ave
Wheat Ridge CO 80033

Martin C Eckert III
Project Number: [none]
Project: Noble - UPRC T4N-R67W-S23 Tank
Battery

Volatile Organic Compounds by GC/MS SW846 8260D - Quality Control
Origins Laboratory, Inc.

Analyte	Result	Reporting Limit	Units	Spike Level	Source Result	%REC	%REC Limits	RPD	RPD Limit	Notes
Batch B2F1031 - EPA 5030 (soil)										
Blank (B2F1031-BLK1)					Prepared: 06/10/2022 Analyzed: 06/10/2022					
1,2,4-Trimethylbenzene	ND	0.00200	mg/kg							U
1,3,5-Trimethylbenzene	ND	0.00200	"							U
Benzene	ND	0.00200	"							U
Ethylbenzene	ND	0.00200	"							U
Naphthalene	ND	0.0100	"							U
Toluene	ND	0.00200	"							U
Xylenes, total	ND	0.00200	"							U
Gasoline Range Hydrocarbons	ND	0.200	"							U
Surrogate: 1,2-Dichloroethane-d4	0.12		"	0.125		97.0	70-130			
Surrogate: Toluene-d8	0.12		"	0.125		95.8	70-130			
Surrogate: 4-Bromofluorobenzene	0.12		"	0.125		99.2	70-130			

Origins Laboratory, Inc.



The results in this report apply to the samples analyzed in accordance with the chain of custody document. This analytical report must be reproduced in its entirety.

Eagle Environmental Consulting, Inc.
8000 W 44th Ave
Wheat Ridge CO 80033

Martin C Eckert III
Project Number: [none]
Project: Noble - UPRC T4N-R67W-S23 Tank
Battery

Volatile Organic Compounds by GC/MS SW846 8260D - Quality Control
Origins Laboratory, Inc.

Analyte	Result	Reporting Limit	Units	Spike Level	Source Result	%REC	%REC Limits	RPD	RPD Limit	Notes
---------	--------	-----------------	-------	-------------	---------------	------	-------------	-----	-----------	-------

Batch B2F1031 - EPA 5030 (soil)

LCS (B2F1031-BS1)

Prepared: 06/10/2022 Analyzed: 06/10/2022

1,2,4-Trimethylbenzene	0.116	0.00200	mg/kg	0.100		116	70-130			
1,3,5-Trimethylbenzene	0.116	0.00200	"	0.100		116	70-130			
Benzene	0.109	0.00200	"	0.100		109	70-130			
Ethylbenzene	0.107	0.00200	"	0.100		107	70-130			
Naphthalene	0.120	0.0100	"	0.100		120	70-130			
Toluene	0.106	0.00200	"	0.100		106	70-130			
o-Xylene	0.107	0.00200	"	0.100		107	70-130			
m,p-Xylene	0.220	0.00400	"	0.200		110	70-130			
Surrogate: 1,2-Dichloroethane-d4	0.12		"	0.125		99.6	70-130			
Surrogate: Toluene-d8	0.12		"	0.125		98.2	70-130			
Surrogate: 4-Bromofluorobenzene	0.12		"	0.125		97.5	70-130			

Origins Laboratory, Inc.



The results in this report apply to the samples analyzed in accordance with the chain of custody document. This analytical report must be reproduced in its entirety.

Eagle Environmental Consulting, Inc.
8000 W 44th Ave
Wheat Ridge CO 80033

Martin C Eckert III
Project Number: [none]
Project: Noble - UPRC T4N-R67W-S23 Tank
Battery

Volatile Organic Compounds by GC/MS SW846 8260D - Quality Control
Origins Laboratory, Inc.

Analyte	Result	Reporting Limit	Units	Spike Level	Source Result	%REC	%REC Limits	RPD	RPD Limit	Notes
Batch B2F1031 - EPA 5030 (soil)										
Matrix Spike (B2F1031-MS1)		Source: Y206278-01			Prepared: 06/10/2022 Analyzed: 06/10/2022					
1,2,4-Trimethylbenzene	0.134	0.00200	mg/kg	0.100	0.0125	122	70-130			
1,3,5-Trimethylbenzene	0.142	0.00200	"	0.100	0.0144	128	70-130			
Benzene	0.0983	0.00200	"	0.100	ND	98.3	70-130			
Ethylbenzene	0.0969	0.00200	"	0.100	0.000520	96.4	70-130			
Naphthalene	0.106	0.0100	"	0.100	0.00328	103	70-130			
Toluene	0.0953	0.00200	"	0.100	ND	95.3	70-130			
o-Xylene	0.0989	0.00200	"	0.100	0.00158	97.3	70-130			
m,p-Xylene	0.220	0.00400	"	0.200	0.00970	105	70-130			
Surrogate: 1,2-Dichloroethane-d4	0.13		"	0.125		103	70-130			
Surrogate: Toluene-d8	0.12		"	0.125		97.6	70-130			
Surrogate: 4-Bromofluorobenzene	0.13		"	0.125		101	70-130			

Origins Laboratory, Inc.



The results in this report apply to the samples analyzed in accordance with the chain of custody document. This analytical report must be reproduced in its entirety.

Eagle Environmental Consulting, Inc.
8000 W 44th Ave
Wheat Ridge CO 80033

Martin C Eckert III
Project Number: [none]
Project: Noble - UPRC T4N-R67W-S23 Tank
Battery

Volatile Organic Compounds by GC/MS SW846 8260D - Quality Control
Origins Laboratory, Inc.

Analyte	Result	Reporting Limit	Units	Spike Level	Source Result	%REC	%REC Limits	RPD	RPD Limit	Notes
Batch B2F1031 - EPA 5030 (soil)										
Matrix Spike Dup (B2F1031-MSD1)	Source: Y206278-01				Prepared: 06/10/2022 Analyzed: 06/10/2022					
1,2,4-Trimethylbenzene	0.132	0.00200	mg/kg	0.100	0.0125	119	70-130	2.15	20	
1,3,5-Trimethylbenzene	0.135	0.00200	"	0.100	0.0144	121	70-130	4.74	20	
Benzene	0.101	0.00200	"	0.100	ND	101	70-130	2.87	20	
Ethylbenzene	0.0985	0.00200	"	0.100	0.000520	98.0	70-130	1.60	20	
Naphthalene	0.109	0.0100	"	0.100	0.00328	106	70-130	3.22	20	
Toluene	0.0964	0.00200	"	0.100	ND	96.4	70-130	1.13	20	
o-Xylene	0.101	0.00200	"	0.100	0.00158	99.3	70-130	1.94	20	
m,p-Xylene	0.224	0.00400	"	0.200	0.00970	107	70-130	1.47	20	
Surrogate: 1,2-Dichloroethane-d4	0.13		"	0.125		102	70-130			
Surrogate: Toluene-d8	0.12		"	0.125		96.9	70-130			
Surrogate: 4-Bromofluorobenzene	0.13		"	0.125		103	70-130			

Origins Laboratory, Inc.



The results in this report apply to the samples analyzed in accordance with the chain of custody document. This analytical report must be reproduced in its entirety.

Eagle Environmental Consulting, Inc.

8000 W 44th Ave

Wheat Ridge CO 80033

Martin C Eckert III

Project Number: [none]

Project: Noble - UPRC T4N-R67W-S23 Tank
Battery

Volatile Organic Compounds by GC/MS SW846 8260D - Quality Control
Origins Laboratory, Inc.

Analyte	Result	Reporting Limit	Units	Spike Level	Source Result	%REC	%REC Limits	RPD	RPD Limit	Notes
---------	--------	--------------------	-------	----------------	------------------	------	----------------	-----	--------------	-------

Batch B2F1306 - EPA 3580

Blank (B2F1306-BLK1)

Prepared: 06/13/2022 Analyzed: 06/17/2022

Diesel (C10-C28)	ND	25.0	mg/kg							U
Residual Range Organics (C28-C40)	ND	100	"							U
Surrogate: o-Terphenyl	17		"	24.9		70.3	50-150			

Origins Laboratory, Inc.



*The results in this report apply to the samples analyzed in
accordance with the chain of custody document. This
analytical report must be reproduced in its entirety.*

Eagle Environmental Consulting, Inc.

8000 W 44th Ave

Wheat Ridge CO 80033

Martin C Eckert III

Project Number: [none]

Project: Noble - UPRC T4N-R67W-S23 Tank
Battery

Extractable Petroleum Hydrocarbons by 8015D - Quality Control
Origins Laboratory, Inc.

Analyte	Result	Reporting Limit	Units	Spike Level	Source Result	%REC	%REC Limits	RPD	RPD Limit	Notes
---------	--------	--------------------	-------	----------------	------------------	------	----------------	-----	--------------	-------

Batch B2F1306 - EPA 3580

LCS (B2F1306-BS1)

Prepared: 06/13/2022 Analyzed: 06/17/2022

Diesel (C10-C28)	743	50.0	mg/kg	1000		74.3	70-130			
Residual Range Organics (C28-C40)	797	200	"	1000		79.7	70-130			
Surrogate: o-Terphenyl	37		"	49.8		73.9	50-150			

Origins Laboratory, Inc.



*The results in this report apply to the samples analyzed in
accordance with the chain of custody document. This
analytical report must be reproduced in its entirety.*

Eagle Environmental Consulting, Inc.
8000 W 44th Ave
Wheat Ridge CO 80033

Martin C Eckert III
Project Number: [none]
Project: Noble - UPRC T4N-R67W-S23 Tank
Battery

Extractable Petroleum Hydrocarbons by 8015D - Quality Control
Origins Laboratory, Inc.

Analyte	Result	Reporting Limit	Units	Spike Level	Source Result	%REC	%REC Limits	RPD	RPD Limit	Notes
---------	--------	--------------------	-------	----------------	------------------	------	----------------	-----	--------------	-------

Batch B2F1306 - EPA 3580

Matrix Spike (B2F1306-MS1)		Source: Y206253-01			Prepared: 06/13/2022 Analyzed: 06/17/2022					
Diesel (C10-C28)	1650	50.0	mg/kg	1000	848	80.6	70-130			
Residual Range Organics (C28-C40)	789	200	"	1000	ND	78.9	70-130			
Surrogate: o-Terphenyl	45		"	49.8		90.5	50-150			

Origins Laboratory, Inc.



The results in this report apply to the samples analyzed in accordance with the chain of custody document. This analytical report must be reproduced in its entirety.

Eagle Environmental Consulting, Inc.
8000 W 44th Ave
Wheat Ridge CO 80033

Martin C Eckert III
Project Number: [none]
Project: Noble - UPRC T4N-R67W-S23 Tank
Battery

Extractable Petroleum Hydrocarbons by 8015D - Quality Control Origins Laboratory, Inc.

Analyte	Result	Reporting Limit	Units	Spike Level	Source Result	%REC	%REC Limits	RPD	RPD Limit	Notes
---------	--------	-----------------	-------	-------------	---------------	------	-------------	-----	-----------	-------

Batch B2F1306 - EPA 3580

Matrix Spike Dup (B2F1306-MSD1)		Source: Y206253-01			Prepared: 06/13/2022 Analyzed: 06/17/2022					
Diesel (C10-C28)	1720	50.0	mg/kg	1000	848	86.7	70-130	3.59	35	
Residual Range Organics (C28-C40)	713	200	"	1000	ND	71.3	70-130	10.2	35	
Surrogate: o-Terphenyl	34		"	49.8		69.3	50-150			

Origins Laboratory, Inc.



The results in this report apply to the samples analyzed in accordance with the chain of custody document. This analytical report must be reproduced in its entirety.

Eagle Environmental Consulting, Inc.
8000 W 44th Ave
Wheat Ridge CO 80033

Martin C Eckert III
Project Number: [none]
Project: Noble - UPRC T4N-R67W-S23 Tank
Battery

Extractable Petroleum Hydrocarbons by 8015D - Quality Control

Origins Laboratory, Inc.

Analyte	Result	Reporting Limit	Units	Spike Level	Source Result	%REC	%REC Limits	RPD	RPD Limit	Notes
---------	--------	-----------------	-------	-------------	---------------	------	-------------	-----	-----------	-------

Metals by SM 3500 Series Methods - Quality Control

Origins Laboratory, Inc.

Analyte	Result	Reporting Limit	Units	Spike Level	Source Result	%REC	%REC Limits	RPD	RPD Limit	Notes
---------	--------	-----------------	-------	-------------	---------------	------	-------------	-----	-----------	-------

Batch B2F2822 - Default Prep Metals

Blank (B2F2822-BLK1)

Prepared: 06/28/2022 Analyzed: 06/28/2022

Arsenic	ND	0.00100	mg/kg							U
Barium	ND	0.100	"							U
Cadmium	ND	0.00100	"							U
Copper	ND	0.0100	"							U
Lead	ND	0.00100	"							U
Nickel	ND	0.00100	"							U
Selenium	ND	0.00100	"							U
Silver	ND	0.00100	"							U
Zinc	ND	0.100	"							U

LCS (B2F2822-BS1)

Prepared: 06/28/2022 Analyzed: 06/28/2022

Arsenic	0.0431	0.00100	mg/kg	0.0500		86.3	80-120
Barium	4.99	0.100	"	5.00		99.9	80-120
Cadmium	0.0501	0.00100	"	0.0500		100	80-120
Copper	0.464	0.0100	"	0.500		92.8	80-120
Lead	0.0500	0.00100	"	0.0500		100	80-120
Nickel	0.0532	0.00100	"	0.0500		106	80-120
Selenium	0.0460	0.00100	"	0.0500		92.0	80-120
Silver	0.0480	0.00100	"	0.0500		95.9	80-120
Zinc	0.448	0.100	"	0.500		89.7	80-120

Matrix Spike (B2F2822-MS1)

Source: Y206235-01

Prepared: 06/28/2022 Analyzed: 06/28/2022

Origins Laboratory, Inc.



The results in this report apply to the samples analyzed in accordance with the chain of custody document. This analytical report must be reproduced in its entirety.

Eagle Environmental Consulting, Inc.
8000 W 44th Ave
Wheat Ridge CO 80033

Martin C Eckert III
Project Number: [none]
Project: Noble - UPRC T4N-R67W-S23 Tank
Battery

Metals by SM 3500 Series Methods - Quality Control

Origins Laboratory, Inc.

Analyte	Result	Reporting Limit	Units	Spike Level	Source Result	%REC	%REC Limits	RPD	RPD Limit	Notes
Batch B2F2822 - Default Prep Metals										
Matrix Spike (B2F2822-MS1)		Source: Y206235-01			Prepared: 06/28/2022 Analyzed: 06/28/2022					
Arsenic	6.64	0.00100	mg/kg	4.32	2.39	98.6	75-125			
Barium	502	0.100	"	432	49.2	105	75-125			
Cadmium	4.79	0.00100	"	4.32	0.390	102	75-125			
Copper	54.8	0.0100	"	43.2	12.0	99.1	75-125			
Lead	27.7	0.00100	"	4.32	13.7	325	75-125			QM-07, QR-DUP
Nickel	9.89	0.00100	"	4.32	4.26	130	75-125			QM-07
Selenium	4.08	0.00100	"	4.32	0.102	92.2	75-125			
Silver	4.25	0.00100	"	4.32	0.123	95.5	75-125			
Zinc	92.9	0.100	"	43.2	46.4	108	75-125			
Matrix Spike Dup (B2F2822-MSD1)		Source: Y206235-01			Prepared: 06/28/2022 Analyzed: 06/28/2022					
Arsenic	6.28	0.00100	mg/kg	4.30	2.39	90.6	75-125	5.58	20	
Barium	480	0.100	"	430	49.2	100	75-125	4.49	20	
Cadmium	4.65	0.00100	"	4.30	0.390	99.0	75-125	3.06	20	
Copper	53.4	0.0100	"	43.0	12.0	96.4	75-125	2.48	20	
Lead	19.8	0.00100	"	4.30	13.7	143	75-125	33.1	20	QM-07, QR-DUP
Nickel	9.04	0.00100	"	4.30	4.26	111	75-125	9.00	20	
Selenium	3.96	0.00100	"	4.30	0.102	89.7	75-125	3.15	20	
Silver	4.29	0.00100	"	4.30	0.123	97.1	75-125	1.10	20	
Zinc	84.8	0.100	"	43.0	46.4	89.4	75-125	9.16	20	

Origins Laboratory, Inc.



The results in this report apply to the samples analyzed in accordance with the chain of custody document. This analytical report must be reproduced in its entirety.

Eagle Environmental Consulting, Inc.
8000 W 44th Ave
Wheat Ridge CO 80033

Martin C Eckert III
Project Number: [none]
Project: Noble - UPRC T4N-R67W-S23 Tank
Battery

Saturated Paste - Quality Control Origins Laboratory, Inc.

Analyte	Result	Reporting Limit	Units	Spike Level	Source Result	%REC	%REC Limits	RPD	RPD Limit	Notes
---------	--------	-----------------	-------	-------------	---------------	------	-------------	-----	-----------	-------

Batch B2F1021 - NO PREP

Blank (B2F1021-BLK1)

Prepared: 06/10/2022 Analyzed: 06/11/2022

pH	0.00		pH Units
Specific Conductance (EC)	0.00160	0.00500	mmhos/cm

Duplicate (B2F1021-DUP1)

Source: Y206243-08

Prepared: 06/10/2022 Analyzed: 06/11/2022

pH	8.45		pH Units	8.43		0.237	25
Specific Conductance (EC)	0.664	0.00500	mmhos/cm	0.739		10.7	25

Origins Laboratory, Inc.



The results in this report apply to the samples analyzed in accordance with the chain of custody document. This analytical report must be reproduced in its entirety.

Eagle Environmental Consulting, Inc.
8000 W 44th Ave
Wheat Ridge CO 80033

Martin C Eckert III
Project Number: [none]
Project: Noble - UPRC T4N-R67W-S23 Tank Battery

Total Metals by 7196A - Quality Control Waypoint Analytical, LLC.

Analyte	Result	Reporting Limit	Units	Spike Level	Source Result	%REC	%REC Limits	RPD	RPD Limit	Notes
Batch L624630 -										
DUP (L 84094-DUP)		Source: 84094			Prepared: Analyzed: 07/01/2022					
Chromium, Hexavalent	ND	1.22	mg/Kg		<2.50	-	0	20		
MS (L 84094-MS)		Source: 84094			Prepared: Analyzed: 07/01/2022					
Chromium, Hexavalent	7.92	1.24	mg/Kg	8.14	<1.24	97	75-125			
MSD (L 84094-MSD)		Source: 84094			Prepared: Analyzed: 07/01/2022					
Chromium, Hexavalent	437	24.6	mg/Kg	617	<24.6	71	75-125			*
LCS (LCS)					Prepared: Analyzed: 07/01/2022					
Chromium, Hexavalent	8.35	0.244	mg/Kg	8		104	75-125			
LRB (LRB)					Prepared: Analyzed: 07/01/2022					
Chromium, Hexavalent	ND	0.5	mg/Kg			-				

Origins Laboratory, Inc.



The results in this report apply to the samples analyzed in accordance with the chain of custody document. This analytical report must be reproduced in its entirety.

Eagle Environmental Consulting, Inc.
8000 W 44th Ave
Wheat Ridge CO 80033

Martin C Eckert III
Project Number: [none]
Project: Noble - UPRC T4N-R67W-S23 Tank
Battery

PAH by 8270D SIM - Quality Control
Waypoint Analytical, Inc.

Analyte	Result	Reporting Limit	Units	Spike Level	Source Result	%REC	%REC Limits	RPD	RPD Limit	Notes
---------	--------	-----------------	-------	-------------	---------------	------	-------------	-----	-----------	-------

Batch L621492 - 3550B

MSD (L 93470-MSD-L621492)		Source: Y206255-03			Prepared: 06/14/2022 Analyzed: 06/15/2022					
Fluoranthene	0.122	0.000394	mg/Kg	0.164	0.00255	72.8	30-130	0.8	30	
2-Methylnaphthalene	0.0987	0.000645	"	0.164	<0.000645	60.1	30-130	9.9	30	
1-Methylnaphthalene	0.103	0.000364	"	0.164	<0.000364	62.8	30-130	0.9	30	
Indeno(1,2,3-cd)pyrene	0.159	0.000627	"	0.164	0.000985	96.3	30-130	0.6	30	
Pyrene	0.122	0.000643	"	0.164	0.00237	72.9	30-130	0.8	30	
Naphthalene	0.103	0.000484	"	0.164	<0.000484	62.8	30-130	0.9	30	
Fluorene	0.117	0.000286	"	0.164	<0.000286	71.3	30-130	1.6	30	
Chrysene	0.119	0.000624	"	0.164	0.00105	71.9	30-130	0.8	30	
Dibenz(a,h)anthracene	0.16	0.000614	"	0.164	<0.000614	97.5	30-130	0.6	30	
Acenaphthene	0.141	0.000304	"	0.164	<0.000304	85.9	30-130	13.6	30	
Benzo(b)fluoranthene	0.111	0.000585	"	0.164	0.00152	66.7	30-130	1.7	30	
Benzo(a)pyrene	0.116	0.000468	"	0.164	0.00105	70	30-130	7.4	30	
Benzo(a)anthracene	0.121	0.000493	"	0.164	0.000668	73.3	30-130	0.8	30	
Anthracene	0.114	0.000334	"	0.164	<0.000334	69.5	30-130	1.7	30	
Benzo(k)fluoranthene	0.111	0.000437	"	0.164	0.000822	67.1	30-130	0	30	
Surrogate: 2-Fluorobiphenyl	77.5		"	0.329	238	77.5	33-115			
Surrogate: 4-Terphenyl-d14	108		"	0.329	313	108	33-122			
Surrogate: Nitrobenzene-d5	77.5		"	0.329	295	77.5	29-110			

MS (L 93470-MS-L621492)		Source: Y206255-03			Prepared: 06/14/2022 Analyzed: 06/15/2022					
Dibenz(a,h)anthracene	0.161	0.000614	mg/Kg	0.164	<0.000614	98.1	30-130			
Fluoranthene	0.123	0.000394	"	0.164	0.00255	73.4	30-130			
Fluorene	0.119	0.000286	"	0.164	<0.000286	72.5	30-130			
Indeno(1,2,3-cd)pyrene	0.16	0.000627	"	0.164	0.000985	96.9	30-130			
Naphthalene	0.104	0.000484	"	0.164	<0.000484	63.4	30-130			
Pyrene	0.121	0.000643	"	0.164	0.00237	72.3	30-130			
Chrysene	0.12	0.000624	"	0.164	0.00105	72.5	30-130			

Origins Laboratory, Inc.



The results in this report apply to the samples analyzed in accordance with the chain of custody document. This analytical report must be reproduced in its entirety.

Eagle Environmental Consulting, Inc.
8000 W 44th Ave
Wheat Ridge CO 80033

Martin C Eckert III
Project Number: [none]
Project: Noble - UPRC T4N-R67W-S23 Tank
Battery

PAH by 8270D SIM - Quality Control
Waypoint Analytical, Inc.

Analyte	Result	Reporting Limit	Units	Spike Level	Source Result	%REC	%REC Limits	RPD	RPD Limit	Notes
---------	--------	-----------------	-------	-------------	---------------	------	-------------	-----	-----------	-------

Batch L621492 - 3550B

MS (L 93470-MS-L621492)		Source: Y206255-03			Prepared: 06/14/2022 Analyzed: 06/15/2022					
Benzo(a)pyrene	0.125	0.000468	mg/Kg	0.164	0.00105	75.5	30-130			
Benzo(a)anthracene	0.12	0.000493	"	0.164	0.000668	72.7	30-130			
Anthracene	0.116	0.000334	"	0.164	<0.000334	70.7	30-130			
Acenaphthene	0.123	0.000304	"	0.164	<0.000304	75	30-130			
2-Methylnaphthalene	0.109	0.000645	"	0.164	<0.000645	66.4	30-130			
1-Methylnaphthalene	0.102	0.000364	"	0.164	<0.000364	62.1	30-130			
Benzo(b)fluoranthene	0.113	0.000585	"	0.164	0.00152	67.9	30-130			
Benzo(k)fluoranthene	0.111	0.000437	"	0.164	0.000822	67.1	30-130			
Surrogate: Nitrobenzene-d5	62.6		"	0.329	295	62.6	29-110			
Surrogate: 4-Terphenyl-d14	99.3		"	0.329	313	99.3	33-122			
Surrogate: 2-Fluorobiphenyl	57.4		"	0.329	238	57.4	33-115			

LCS (LCS-L621492)

Prepared: 06/14/2022 Analyzed: 06/15/2022

Naphthalene	0.092	0.000484	mg/Kg	0.167		55	30-130
Pyrene	0.125	0.000643	"	0.167		74.8	30-130
Benzo(a)anthracene	0.113	0.000493	"	0.167		67.6	30-130
Benzo(a)pyrene	0.125	0.000468	"	0.167		74.8	30-130
Benzo(b)fluoranthene	0.108	0.000585	"	0.167		64.6	30-130
Benzo(k)fluoranthene	0.116	0.000437	"	0.167		69.4	30-130
Chrysene	0.112	0.000624	"	0.167		67	30-130
Dibenz(a,h)anthracene	0.117	0.000614	"	0.167		70	30-130
Fluoranthene	0.124	0.000394	"	0.167		74.2	30-130
Indeno(1,2,3-cd)pyrene	0.109	0.000627	"	0.167		65.2	30-130
Anthracene	0.102	0.000334	"	0.167		61	30-130
Fluorene	0.101	0.000286	"	0.167		60.4	30-130
2-Methylnaphthalene	0.0945	0.000645	"	0.167		56.5	30-130
1-Methylnaphthalene	0.0965	0.000364	"	0.167		57.7	30-130

Origins Laboratory, Inc.



The results in this report apply to the samples analyzed in accordance with the chain of custody document. This analytical report must be reproduced in its entirety.

Eagle Environmental Consulting, Inc.
8000 W 44th Ave
Wheat Ridge CO 80033

Martin C Eckert III
Project Number: [none]
Project: Noble - UPRC T4N-R67W-S23 Tank
Battery

PAH by 8270D SIM - Quality Control
Waypoint Analytical, Inc.

Analyte	Result	Reporting Limit	Units	Spike Level	Source Result	%REC	%REC Limits	RPD	RPD Limit	Notes
---------	--------	-----------------	-------	-------------	---------------	------	-------------	-----	-----------	-------

Batch L621492 - 3550B

LCS (LCS-L621492)

Prepared: 06/14/2022 Analyzed: 06/15/2022

Acenaphthene	0.095	0.000304	mg/Kg	0.167		56.8	30-130			
Surrogate: Nitrobenzene-d5	81.9		"	0.333		81.9	29-110			
Surrogate: 2-Fluorobiphenyl	69		"	0.333		69	33-115			
Surrogate: 4-Terphenyl-d14	103		"	0.333		103	33-122			

LRB (LRB-L621492)

Prepared: 06/14/2022 Analyzed: 06/15/2022

Benzo(k)fluoranthene	ND	0.00067	mg/Kg				-			
2-Methylnaphthalene	ND	0.00067	"				-			
Acenaphthene	ND	0.00067	"				-			
Anthracene	ND	0.00067	"				-			
Benzo(a)anthracene	ND	0.00067	"				-			
Benzo(a)pyrene	ND	0.00067	"				-			
1-Methylnaphthalene	ND	0.00067	"				-			
Pyrene	ND	0.00067	"				-			
Chrysene	ND	0.00067	"				-			
Dibenz(a,h)anthracene	ND	0.00067	"				-			
Fluoranthene	ND	0.00067	"				-			
Fluorene	ND	0.00067	"				-			
Indeno(1,2,3-cd)pyrene	ND	0.00067	"				-			
Naphthalene	ND	0.00067	"				-			
Benzo(b)fluoranthene	ND	0.00067	"				-			
Surrogate: 2-Fluorobiphenyl	72.6		"	0.333		72.6	33-115			
Surrogate: 4-Terphenyl-d14	94.5		"	0.333		94.5	33-122			
Surrogate: Nitrobenzene-d5	89.1		"	0.333		89.1	29-110			

Origins Laboratory, Inc.



The results in this report apply to the samples analyzed in accordance with the chain of custody document. This analytical report must be reproduced in its entirety.

Eagle Environmental Consulting, Inc.
8000 W 44th Ave
Wheat Ridge CO 80033

Martin C Eckert III
Project Number: [none]
Project: Noble - UPRC T4N-R67W-S23 Tank
Battery

PAH by 8270D SIM - Quality Control
Waypoint Analytical, Inc.

Analyte	Result	Reporting Limit	Units	Spike Level	Source Result	%REC	%REC Limits	RPD	RPD Limit	Notes
---------	--------	-----------------	-------	-------------	---------------	------	-------------	-----	-----------	-------

Batch L621355 - 3550B

MSD (L 93445-MSD-L621355)		Source: 93445			Prepared: 06/14/2022 Analyzed: 06/15/2022					
Pyrene	0.221	0.000643	mg/Kg	0.166	<0.000643	133	30-130	76.1	30	*
Chrysene	0.201	0.000624	"	0.166	<0.000624	121	30-130	83	30	
Dibenz(a,h)anthracene	0.224	0.000614	"	0.166	<0.000614	135	30-130	83.5	30	*
Fluoranthene	0.221	0.000394	"	0.166	<0.000394	133	30-130	75.7	30	*
Fluorene	0.18	0.000286	"	0.166	<0.000286	108	30-130	77.6	30	
Indeno(1,2,3-cd)pyrene	0.189	0.000627	"	0.166	<0.000627	114	30-130	76.6	30	
Naphthalene	0.148	0.000484	"	0.166	<0.000484	89.1	30-130	76.5	30	
1-Methylnaphthalene	0.15	0.000364	"	0.166	<0.000364	90.3	30-130	77.3	30	
Benzo(k)fluoranthene	0.194	0.000437	"	0.166	<0.000437	117	30-130	81.1	30	
Benzo(b)fluoranthene	0.174	0.000585	"	0.166	<0.000585	105	30-130	60.1	30	
Benzo(a)pyrene	0.223	0.000468	"	0.166	<0.000468	134	30-130	80.5	30	*
Benzo(a)anthracene	0.199	0.000493	"	0.166	<0.000493	120	30-130	74.7	30	
Anthracene	0.192	0.000334	"	0.166	<0.000334	116	30-130	84.7	30	
Acenaphthene	0.166	0.000304	"	0.166	<0.000304	100	30-130	79.9	30	
2-Methylnaphthalene	0.151	0.000645	"	0.166	<0.000645	90.9	30-130	78.9	30	
Surrogate: 4-Terphenyl-d14	160		"	0.332	257	160	33-122			*
Surrogate: 2-Fluorobiphenyl	105		"	0.332	172	105	33-115			
Surrogate: Nitrobenzene-d5	125		"	0.332	208	125	29-110			*

MS (L 93445-MS-L621355)		Source: 93445			Prepared: 06/14/2022 Analyzed: 06/15/2022					
Acenaphthene	0.0712	0.000304	mg/Kg	0.163	<0.000304	43.6	30-130			
Fluorene	0.0793	0.000286	"	0.163	<0.000286	48.6	30-130			
2-Methylnaphthalene	0.0655	0.000645	"	0.163	<0.000645	40.1	30-130			
Pyrene	0.0991	0.000643	"	0.163	<0.000643	60.7	30-130			
1-Methylnaphthalene	0.0663	0.000364	"	0.163	<0.000364	40.6	30-130			
Indeno(1,2,3-cd)pyrene	0.0843	0.000627	"	0.163	<0.000627	51.7	30-130			
Fluoranthene	0.0996	0.000394	"	0.163	<0.000394	61.1	30-130			

Origins Laboratory, Inc.



The results in this report apply to the samples analyzed in accordance with the chain of custody document. This analytical report must be reproduced in its entirety.

Eagle Environmental Consulting, Inc.
8000 W 44th Ave
Wheat Ridge CO 80033

Martin C Eckert III
Project Number: [none]
Project: Noble - UPRC T4N-R67W-S23 Tank
Battery

PAH by 8270D SIM - Quality Control
Waypoint Analytical, Inc.

Analyte	Result	Reporting Limit	Units	Spike Level	Source Result	%REC	%REC Limits	RPD	RPD Limit	Notes
---------	--------	-----------------	-------	-------------	---------------	------	-------------	-----	-----------	-------

Batch L621355 - 3550B

MS (L 93445-MS-L621355)		Source: 93445			Prepared: 06/14/2022 Analyzed: 06/15/2022					
Dibenz(a,h)anthracene	0.092	0.000614	mg/Kg	0.163	<0.000614	56.4	30-130			
Benzo(k)fluoranthene	0.082	0.000437	"	0.163	<0.000437	50.3	30-130			
Benzo(b)fluoranthene	0.0935	0.000585	"	0.163	<0.000585	57.3	30-130			
Benzo(a)pyrene	0.0949	0.000468	"	0.163	<0.000468	58.2	30-130			
Benzo(a)anthracene	0.0907	0.000493	"	0.163	<0.000493	55.6	30-130			
Anthracene	0.0777	0.000334	"	0.163	<0.000334	47.6	30-130			
Chrysene	0.083	0.000624	"	0.163	<0.000624	50.9	30-130			
Naphthalene	0.0661	0.000484	"	0.163	<0.000484	40.5	30-130			
Surrogate: Nitrobenzene-d5	53.2		"	0.327	208	53.2	29-110			
Surrogate: 4-Terphenyl-d14	67.5		"	0.327	257	67.5	33-122			
Surrogate: 2-Fluorobiphenyl	43.4		"	0.327	172	43.4	33-115			

LCS (LCS-L621355)		Prepared: 06/14/2022 Analyzed: 06/15/2022								
Chrysene	0.192	0.000624	mg/Kg	0.167		115	30-130			
Fluoranthene	0.211	0.000394	"	0.167		126	30-130			
Fluorene	0.171	0.000286	"	0.167		102	30-130			
Indeno(1,2,3-cd)pyrene	0.165	0.000627	"	0.167		98.8	30-130			
Naphthalene	0.147	0.000484	"	0.167		88	30-130			
Pyrene	0.208	0.000643	"	0.167		125	30-130			
Benzo(k)fluoranthene	0.19	0.000437	"	0.167		114	30-130			
1-Methylnaphthalene	0.148	0.000364	"	0.167		88.6	30-130			
Benzo(a)pyrene	0.209	0.000468	"	0.167		125	30-130			
Benzo(a)anthracene	0.187	0.000493	"	0.167		112	30-130			
Anthracene	0.17	0.000334	"	0.167		102	30-130			
Acenaphthene	0.157	0.000304	"	0.167		94	30-130			
2-Methylnaphthalene	0.151	0.000645	"	0.167		90.4	30-130			
Dibenz(a,h)anthracene	0.199	0.000614	"	0.167		119	30-130			

Origins Laboratory, Inc.



The results in this report apply to the samples analyzed in accordance with the chain of custody document. This analytical report must be reproduced in its entirety.

Eagle Environmental Consulting, Inc.
8000 W 44th Ave
Wheat Ridge CO 80033

Martin C Eckert III
Project Number: [none]
Project: Noble - UPRC T4N-R67W-S23 Tank
Battery

PAH by 8270D SIM - Quality Control
Waypoint Analytical, Inc.

Analyte	Result	Reporting Limit	Units	Spike Level	Source Result	%REC	%REC Limits	RPD	RPD Limit	Notes
---------	--------	-----------------	-------	-------------	---------------	------	-------------	-----	-----------	-------

Batch L621355 - 3550B

LCS (LCS-L621355)

Prepared: 06/14/2022 Analyzed: 06/15/2022

Benzo(b)fluoranthene	0.169	0.000585	mg/Kg	0.167		101	30-130			
Surrogate: Nitrobenzene-d5	130		"	0.333	130		29-110			*
Surrogate: 4-Terphenyl-d14	166		"	0.333	166		33-122			*
Surrogate: 2-Fluorobiphenyl	110		"	0.333	110		33-115			

LRB (LRB-L621355)

Prepared: 06/14/2022 Analyzed: 06/15/2022

Dibenz(a,h)anthracene	0.00237	0.00067	mg/Kg				-			*
Fluoranthene	ND	0.00067	"				-			
Fluorene	ND	0.00067	"				-			
Indeno(1,2,3-cd)pyrene	0.00144	0.00067	"				-			*
Naphthalene	ND	0.00067	"				-			
Chrysene	ND	0.00067	"				-			
Pyrene	ND	0.00067	"				-			
Acenaphthene	ND	0.00067	"				-			
Benzo(k)fluoranthene	0.00102	0.00067	"				-			*
Benzo(b)fluoranthene	0.000909	0.00067	"				-			*
Benzo(a)pyrene	0.000619	0.00067	"				-			J
Anthracene	ND	0.00067	"				-			
2-Methylnaphthalene	ND	0.00067	"				-			
1-Methylnaphthalene	ND	0.00067	"				-			
Benzo(a)anthracene	ND	0.00067	"				-			
Surrogate: Nitrobenzene-d5	66.3		"	0.333	66.3		29-110			
Surrogate: 4-Terphenyl-d14	84.3		"	0.333	84.3		33-122			
Surrogate: 2-Fluorobiphenyl	56.7		"	0.333	56.7		33-115			

Origins Laboratory, Inc.



The results in this report apply to the samples analyzed in accordance with the chain of custody document. This analytical report must be reproduced in its entirety.

Eagle Environmental Consulting, Inc.

8000 W 44th Ave

Wheat Ridge CO 80033

Martin C Eckert III

Project Number: [none]

Project: Noble - UPRC T4N-R67W-S23 Tank
Battery

Notes and Definitions

U Sample is Non-Detect.

QR-DUP RPD exceeds QC acceptance criteria, this indicates source sample is not homogenous.

QM-07 The spike recovery was outside acceptance limits for the MS and/or MSD. The batch was accepted based on acceptable LCS recovery.

J Estimated Value. Analyte below reported quantitation limit.

B Analyte detected in associated method blank.

* QC Failure

ND Analyte NOT DETECTED at or above the reporting limit

RPD Relative Percent Difference

All soil results are reported on a wet weight basis.

Origins Laboratory, Inc.



The results in this report apply to the samples analyzed in accordance with the chain of custody document. This analytical report must be reproduced in its entirety.



July 15, 2022

Eagle Environmental Consulting, Inc.

Martin C Eckert III

8000 W 44th Ave

Wheat Ridge CO 80033

Project Name - Noble - UPRC T4N-R67W-S23 Tank Battery **Project Number - [none]**

Attached are your analytical results for Noble - UPRC T4N-R67W-S23 Tank Battery received by Origins Laboratory, Inc. June 29, 2022. This project is associated with Origins project number Y206741-01.

The analytical results in the following report were analyzed under the guidelines of EPA Methods. These methods are identified as follows; "SW" are defined in SW-846, "EPA" are defined in 40CFR part 136 and "SM" are defined in the most current revision of Standard Methods For the Examination of Water and Wastewater.

The analytical results apply specifically to the samples and analyses specified per the attached Chain of Custody. As such, this report shall not be reproduced except in full, without the written approval of Origin's laboratory.

Unless otherwise noted, the analytical results for all soil samples are reported on a wet weight basis. All analytical analyses were performed under NELAP guidelines unless noted by a data qualifier.

Any holding time exceedances, deviations from the method specifications or deviations from Origins Laboratory's Standard Operating Procedures are outlined in the case narrative.

Thank you for selecting Origins for your analytical needs. Please contact us with any questions concerning this report, or if we can help with anything at all.

Origins Laboratory, Inc.
303.433.1322
o-squad@oelabinc.com



1725 Elk Place, Denver, CO 80211 | Phone: 303.433.1322 | Fax: 303.265.9645

Eagle Environmental Consulting, Inc.

8000 W 44th Ave

Wheat Ridge CO 80033

Martin C Eckert III

Project Number: [none]

Project: Noble - UPRC T4N-R67W-S23 Tank
Battery

CROSS REFERENCE REPORT

Sample ID	Laboratory ID	Matrix	Date Sampled	Date Received
Background-01@4'	Y206741-01	Soil	June 9, 2022 10:42	06/29/2022 12:14

Origins Laboratory, Inc.



The results in this report apply to the samples analyzed in accordance with the chain of custody document. This analytical report must be reproduced in its entirety.

Jen Pellegrini, Project Manager

Page 3 of 9

Eagle Environmental Consulting, Inc.

8000 W 44th Ave

Wheat Ridge CO 80033

Martin C Eckert III

Project Number: [none]

Project: Noble - UPRC T4N-R67W-S23 Tank Battery

Origins Laboratory

Sample Receipt Checklist

F-012207-01-R1
Effective Date: 01/09/12

Origins Work Order: Y200741

Client: Eagle/Mobile

Client Project ID: UPRC T4N

Checklist Completed by: JB

Shipped Via: HD
(UPS, FedEx, Hand Delivered, Pick-up, etc.)

Date/time completed: 6-30-22

Airbill #: 112

Matrix(s) Received: (Check all that apply): ☒ Soil/Solid ☐ Water ☐ Other:

Cooler Number/Temperature: 1 / 1.8 °C / °C / °C (Describe) °C

Thermometer ID: T603

Requirement Description	Yes	No	N/A	Comments (if any)
If samples require cooling, was the temperature between 0°C to ≤ 6°C ⁽¹⁾ ?	<input checked="" type="checkbox"/>			
Is there ice present (document if blue ice is used)	<input checked="" type="checkbox"/>			
Are custody seals present on cooler? (if so, document in comments if they are signed and dated, broken or intact)		<input checked="" type="checkbox"/>		
Are custody seals present on each sample container? (if so, document in comments if they are signed and dated, broken or intact)		<input checked="" type="checkbox"/>		
Were all samples received intact ⁽¹⁾ ?	<input checked="" type="checkbox"/>			
Was adequate sample volume provided ⁽¹⁾ ?	<input checked="" type="checkbox"/>			
Are short holding time analytes or samples with HTs due within 48 hours present ⁽¹⁾ ?		<input checked="" type="checkbox"/>		
Is a chain-of-custody (COC) present and filled out completely ⁽¹⁾ ?	<input checked="" type="checkbox"/>			
Does the COC agree with the number and type of sample bottles received ⁽¹⁾ ?	<input checked="" type="checkbox"/>			
Do the sample IDs on the bottle labels match the COC ⁽¹⁾ ?	<input checked="" type="checkbox"/>			
Is the COC properly relinquished by the client with date and time recorded ⁽¹⁾ ?	<input checked="" type="checkbox"/>			
For volatiles in water – is there headspace (> ¼ inch bubble) present? If yes, contact client and note in narrative.			<input checked="" type="checkbox"/>	
Are samples preserved that require preservation and was it checked ⁽¹⁾ ? (note ID of confirmation instrument used in comments) / (preservation is not confirmed for subcontracted analyses in order to insure sample integrity) / (pH < 2 for samples preserved with HNO ₃ , HCL, H ₂ SO ₄) / (pH > 10 for samples preserved with NaAsO ₂ +NaOH, ZnAc+NaOH)		<input checked="" type="checkbox"/>		
Additional Comments (if any):				

⁽¹⁾ If NO, then contact the client before proceeding with analysis and note date/time and person contacted as well as the corrective action to in the additional comments (above) and the case narrative.

Reviewed by (Project Manager) JB

Date/Time Reviewed 7/1/22

Origins Laboratory, Inc.

Jen Pellegrini

The results in this report apply to the samples analyzed in accordance with the chain of custody document. This analytical report must be reproduced in its entirety.

Jen Pellegrini, Project Manager

Eagle Environmental Consulting, Inc.

8000 W 44th Ave

Wheat Ridge CO 80033

Martin C Eckert III

Project Number: [none]

Project: Noble - UPRC T4N-R67W-S23 Tank Battery

Background-01@4'

6/9/2022 10:42:00AM

Analyte	Result	Reporting Limit	Units	Dilution	Batch	Analyst	Prepared	Analyzed	Notes
---------	--------	-----------------	-------	----------	-------	---------	----------	----------	-------

Origins Laboratory, Inc.

Y206741-01 (Soil)

pH in Soil by 9045D

pH	8.15	pH Units	1	B2F3006	ACC	06/30/2022	07/01/2022
----	------	----------	---	---------	-----	------------	------------

Table 915 metals by EPA 6020B

Arsenic	3.99	0.186	mg/kg	2	B2F3007	CW	06/30/2022	07/06/2022
Barium	155	9.28	"	"	"	CW	"	"
Cadmium	0.187	0.186	"	"	"	CW	"	"
Copper	8.90	1.86	"	"	"	CW	"	"
Lead	9.12	0.186	"	"	"	CW	"	"
Nickel	12.0	0.186	"	"	"	CW	"	"
Selenium	ND	0.186	"	"	"	CW	"	" U
Silver	ND	0.186	"	"	"	CW	"	" U
Zinc	33.1	18.6	"	"	"	CW	"	"

Origins Laboratory, Inc.



The results in this report apply to the samples analyzed in accordance with the chain of custody document. This analytical report must be reproduced in its entirety.

Jen Pellegrini, Project Manager

Eagle Environmental Consulting, Inc.
8000 W 44th Ave
Wheat Ridge CO 80033

Martin C Eckert III
Project Number: [none]
Project: Noble - UPRC T4N-R67W-S23 Tank
Battery

Metals by SM 3500 Series Methods - Quality Control

Origins Laboratory, Inc.

Analyte	Result	Reporting Limit	Units	Spike Level	Source Result	%REC	%REC Limits	RPD	RPD Limit	Notes
---------	--------	-----------------	-------	-------------	---------------	------	-------------	-----	-----------	-------

Batch B2F3007 - Default Prep Metals

Blank (B2F3007-BLK1)

Prepared: 06/30/2022 Analyzed: 07/06/2022

Arsenic	ND	0.000100	mg/kg							U
Barium	ND	0.0500	"							U
Cadmium	ND	0.000100	"							U
Copper	ND	0.0100	"							U
Lead	ND	0.00100	"							U
Nickel	ND	0.00100	"							U
Selenium	ND	0.000100	"							U
Silver	ND	0.00100	"							U
Zinc	ND	0.100	"							U

LCS (B2F3007-BS1)

Prepared: 06/30/2022 Analyzed: 07/06/2022

Arsenic	0.0955	0.000100	mg/kg	0.100		95.5	80-120
Barium	9.41	0.0500	"	10.0		94.1	80-120
Cadmium	0.105	0.000100	"	0.100		105	80-120
Copper	1.03	0.0100	"	1.00		103	80-120
Lead	0.105	0.00100	"	0.100		105	80-120
Nickel	0.105	0.00100	"	0.100		105	80-120
Selenium	0.102	0.000100	"	0.100		102	80-120
Silver	0.107	0.00100	"	0.100		107	80-120
Zinc	0.963	0.100	"	1.00		96.3	80-120

Matrix Spike (B2F3007-MS1)

Source: Y206731-01

Prepared: 06/30/2022 Analyzed: 07/06/2022

Arsenic	9.07	0.0173	mg/kg	8.67	1.87	83.0	75-125
Barium	859	8.67	"	867	38.7	94.5	75-125
Cadmium	9.16	0.0173	"	8.67	0.0825	105	75-125
Copper	80.2	1.73	"	86.7	5.75	85.9	75-125
Lead	14.0	0.173	"	8.67	5.18	102	75-125

Origins Laboratory, Inc.



The results in this report apply to the samples analyzed in accordance with the chain of custody document. This analytical report must be reproduced in its entirety.

Eagle Environmental Consulting, Inc.
8000 W 44th Ave
Wheat Ridge CO 80033

Martin C Eckert III
Project Number: [none]
Project: Noble - UPRC T4N-R67W-S23 Tank
Battery

Metals by SM 3500 Series Methods - Quality Control
Origins Laboratory, Inc.

Analyte	Result	Reporting Limit	Units	Spike Level	Source Result	%REC	%REC Limits	RPD	RPD Limit	Notes
---------	--------	-----------------	-------	-------------	---------------	------	-------------	-----	-----------	-------

Batch B2F3007 - Default Prep Metals

Matrix Spike (B2F3007-MS1)		Source: Y206731-01			Prepared: 06/30/2022 Analyzed: 07/06/2022					
Nickel	14.9	0.173	mg/kg	8.67	6.72	94.5	75-125			
Selenium	6.98	0.0173	"	8.67	0.0743	79.6	75-125			
Silver	9.18	0.173	"	8.67	0.0256	106	75-125			
Zinc	89.2	17.3	"	86.7	17.9	82.3	75-125			
Matrix Spike Dup (B2F3007-MSD1)		Source: Y206731-01			Prepared: 06/30/2022 Analyzed: 07/06/2022					
Arsenic	8.91	0.0180	mg/kg	8.99	1.87	78.3	75-125	1.78	20	
Barium	826	8.99	"	899	38.7	87.6	75-125	3.88	20	
Cadmium	8.86	0.0180	"	8.99	0.0825	97.6	75-125	3.34	20	
Copper	81.5	1.80	"	89.9	5.75	84.3	75-125	1.58	20	
Lead	13.1	0.180	"	8.99	5.18	88.3	75-125	6.74	20	
Nickel	14.2	0.180	"	8.99	6.72	83.2	75-125	4.95	20	
Selenium	7.46	0.0180	"	8.99	0.0743	82.2	75-125	6.69	20	
Silver	8.71	0.180	"	8.99	0.0256	96.6	75-125	5.24	20	
Zinc	90.0	18.0	"	89.9	17.9	80.3	75-125	0.913	20	

Origins Laboratory, Inc.



The results in this report apply to the samples analyzed in accordance with the chain of custody document. This analytical report must be reproduced in its entirety.

Eagle Environmental Consulting, Inc.

8000 W 44th Ave

Wheat Ridge CO 80033

Martin C Eckert III

Project Number: [none]

Project: Noble - UPRC T4N-R67W-S23 Tank
Battery

Saturated Paste - Quality Control
Origins Laboratory, Inc.

Analyte	Result	Reporting Limit	Units	Spike Level	Source Result	%REC	%REC Limits	RPD	RPD Limit	Notes
---------	--------	--------------------	-------	----------------	------------------	------	----------------	-----	--------------	-------

Batch B2F3006 - NO PREP

Duplicate (B2F3006-DUP1)

Source: Y206731-01

Prepared: 06/30/2022 Analyzed: 07/01/2022

pH	8.39		pH Units		8.26			1.56	25	
----	------	--	----------	--	------	--	--	------	----	--

Origins Laboratory, Inc.



*The results in this report apply to the samples analyzed in
accordance with the chain of custody document. This
analytical report must be reproduced in its entirety.*

Jen Pellegrini, Project Manager

Eagle Environmental Consulting, Inc.

8000 W 44th Ave

Wheat Ridge CO 80033

Martin C Eckert III

Project Number: [none]

Project: Noble - UPRC T4N-R67W-S23 Tank
Battery

Notes and Definitions

U Sample is Non-Detect.

ND Analyte NOT DETECTED at or above the reporting limit

RPD Relative Percent Difference

All soil results are reported at a wet weight basis.

Origins Laboratory, Inc.



The results in this report apply to the samples analyzed in accordance with the chain of custody document. This analytical report must be reproduced in its entirety.

Jen Pellegrini, Project Manager